

**Typical Floor Plan**

Proposed Student Hostel at Rural Building Lot No. 925, High West, Pok Fu Lam

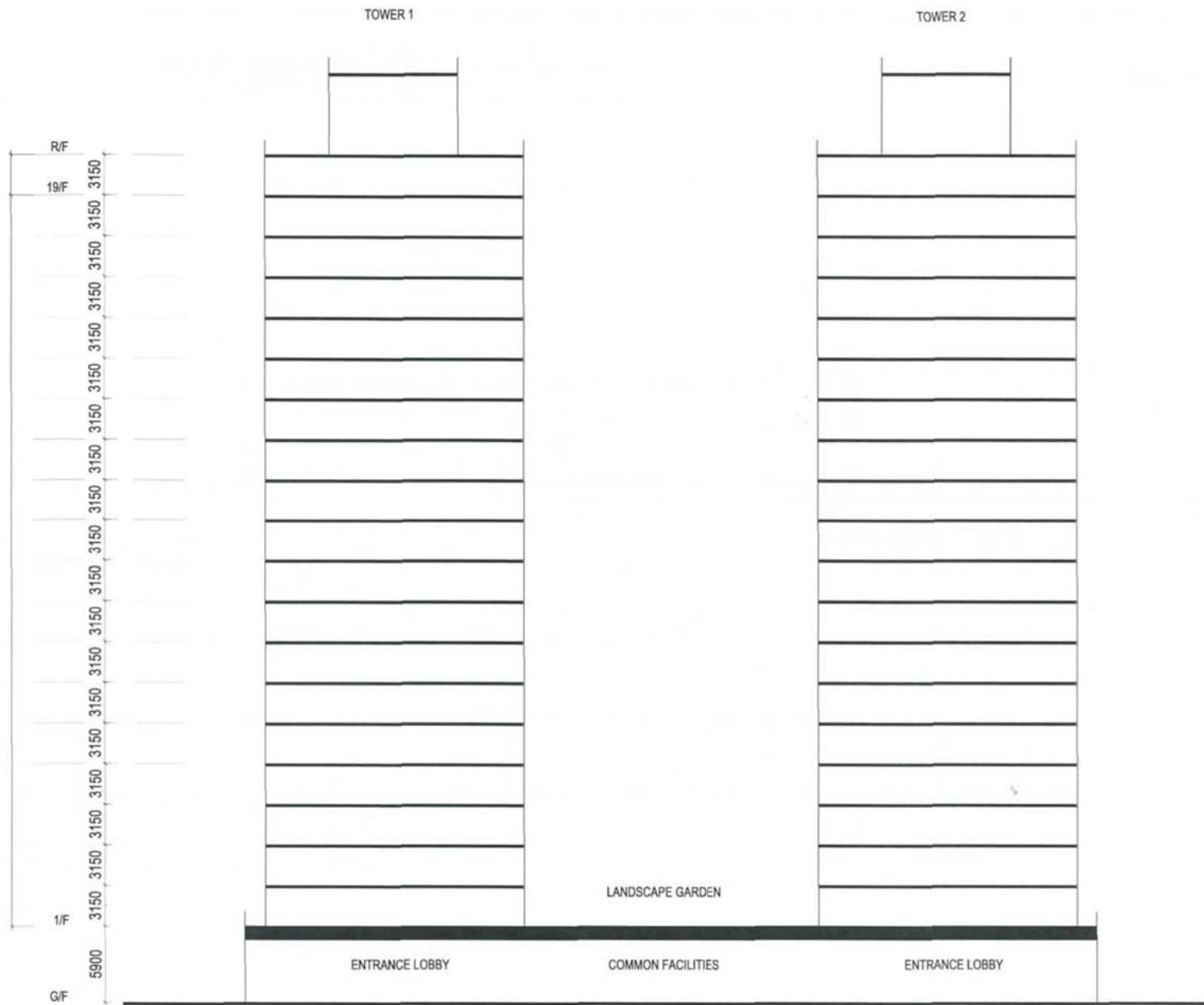
(Not to Scale)

**Plan 4**

參考編號 REFERENCE No. A/H10/94	繪圖 DRAWING A - 2
-----------------------------------	------------------------

STAFF LIVING  
ACCOMMODATION &  
SUPPORTING SPACES  
(1 STOREY)

STUDENT LIVING  
ACCOMMODATION  
(18 STOREYS)



(Not to Scale)

**Section**

Proposed Student Hostel at Rural Building Lot No. 925, High West, Pok Fu Lam

**Plan 5**

(資料來源：由申請人提供)  
(SOURCE : SUBMITTED BY THE APPLICANT)

參考編號 REFERENCE No. A/H10/94	繪圖 DRAWING A - 3
-----------------------------------	------------------------



(資料來源：由申請人提供)  
 (SOURCE : SUBMITTED BY THE APPLICANT)

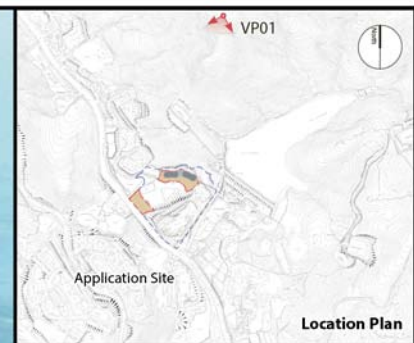
參考編號 REFERENCE No. A/H10/94	繪圖 DRAWING A - 4
-----------------------------------	------------------------



Vantage Point 01: View looking south from the submit of High West (Existing Situation)



Vantage Point 01: View looking south from the submit of High West (Proposed Scheme at Year 10)



**Vantage Point 01 (VP01)**

Vantage point elevation: +324.0mPD  
 Viewing distance: 413m  
 Maximum building height of Proposed Scheme: +220.75mPD at R/F

FIGURE TITLE  
 S16 Application for Proposed Student Hostel at Rural Building Lot No. 925, High West, Pok Fu Lam

**Visual Impact Assessment: Photomontages**

SCALE	N.T.S.	DATE	May 2019
CHECKED	CJF	DRAWN	AL
FIGURE NO.	Figure 7.2		REV A

**SCENIC Landscape Studio Limited**  
 LANDSCAPE ARCHITECTURE, LANDSCAPE PLANNING & ASSESSMENT

12/F So Hong Commercial Building, 41-47 Jervois Street, Sheung Wan, Hong Kong  
 Telephone: 2468 2422  
 Facsimile: 3816 2422  
 Website: www.scenicstudio.com

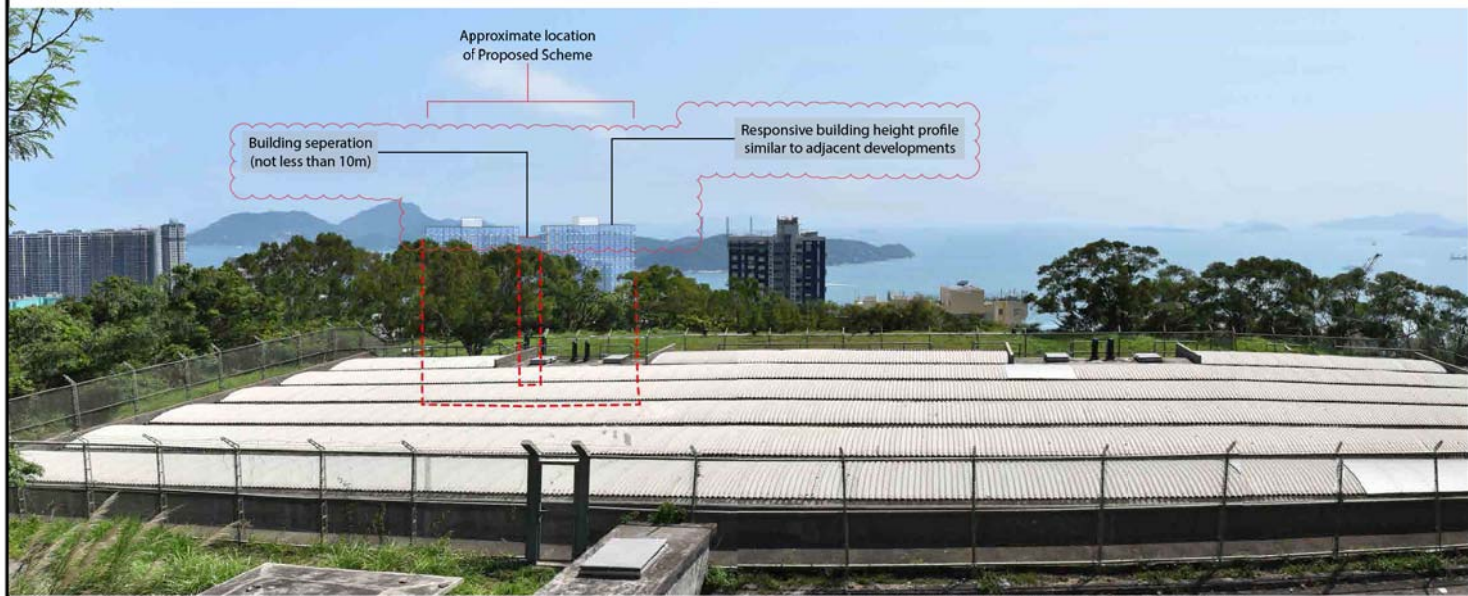
(資料來源：由申請人提供)  
 (SOURCE : SUBMITTED BY THE APPLICANT)

參考編號  
 REFERENCE No.  
 A/H10/94

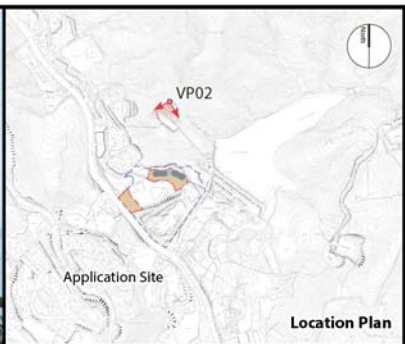
繪圖  
 DRAWING  
 A - 5



Vantage Point 02: View looking south from Hong Kong Trail Section 1 near Pokfulam No. 1 Fresh Water Service Reservoirs (High West) (Existing Situation)



Vantage Point 02: View looking south from Hong Kong Trail Section 1 near Pokfulam No. 1 Fresh Water Service Reservoirs (High West) (Proposed Scheme at Year 10)



**Vantage Point 02 (VP02)**

Vantage point elevation: +218.6mPD  
 Viewing distance: 155m  
 Maximum building height of Proposed Scheme: +220.75mPD at R/F

FIGURE TITLE	S16 Application for Proposed Student Hostel at Rural Building Lot No. 925, High West, Pok Fu Lam			
	<b>Visual Impact Assessment: Photomontages</b>			

SCALE	N.T.S.	DATE	May 2019
CHECKED	CJF	DRAWN	AL
FIGURE NO.	Figure 7.3		REV A

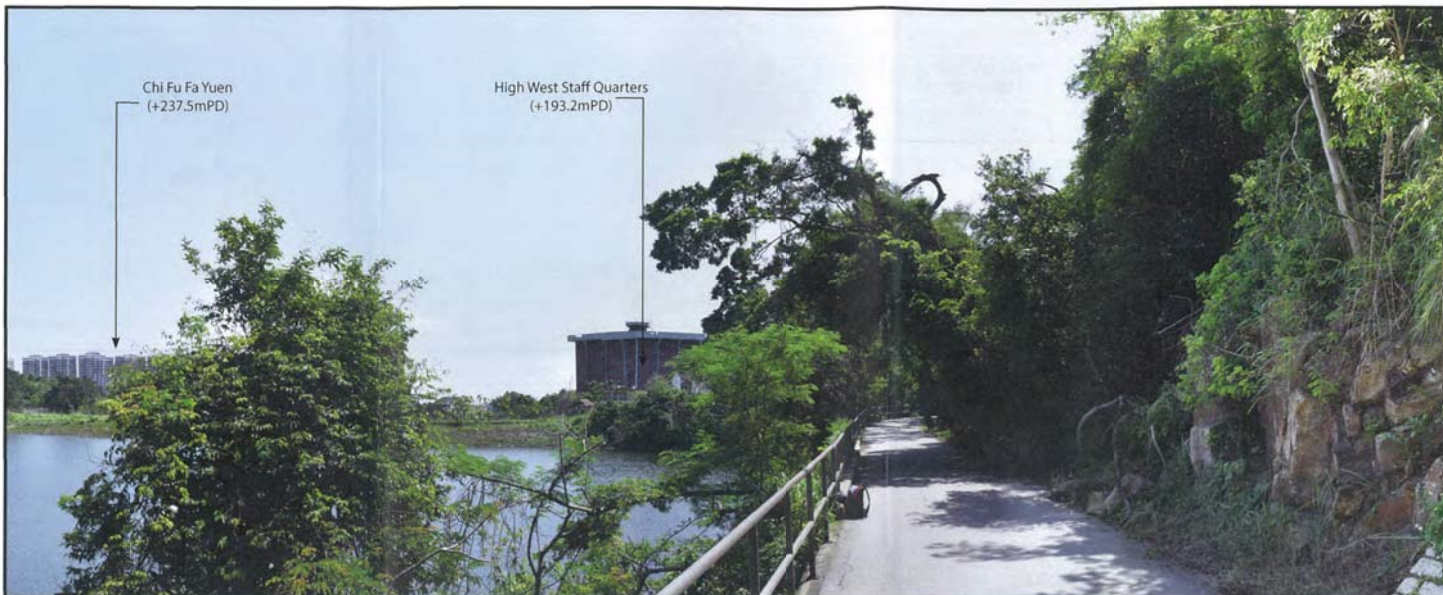
**SCENIC Landscape Studio Limited**  
 LANDSCAPE ARCHITECTURE, LANDSCAPE PLANNING & ASSESSMENT

12/F So Hong Commercial Building, 41-47 Jervois Street, Sheung Wan, Hong Kong

Telephone: 2468 2422  
 Facsimile: 3816 2422  
 Website: www.scenicstudio.com

(資料來源：由申請人提供)  
 (SOURCE : SUBMITTED BY THE APPLICANT)

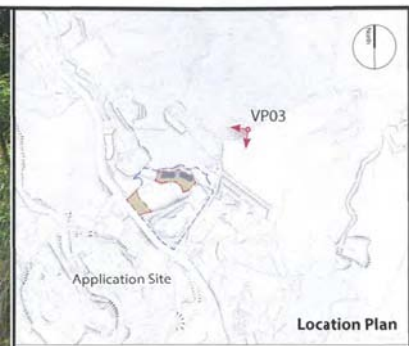
參考編號 REFERENCE No. A/H10/94	繪圖 DRAWING A - 6
-----------------------------------	------------------------



Vantage Point 03: View looking southwest from Pok Fu Lam Reservoir Trail (Existing Situation)



Vantage Point 03: View looking southwest from Pok Fu Lam Reservoir Trail (Proposed Scheme at Year 10)



**Vantage Point 03 (VP03)**

Vantage point elevation: +173.7mPD  
 Viewing distance: 232m  
 Maximum building height of Proposed Scheme: +220.75mPD at R/F

FIGURE TITLE			
S16 Application for Proposed Student Hostel at Rural Building Lot No. 925, High West, Pok Fu Lam			
<b>Visual Impact Assessment: Photomontages</b>			

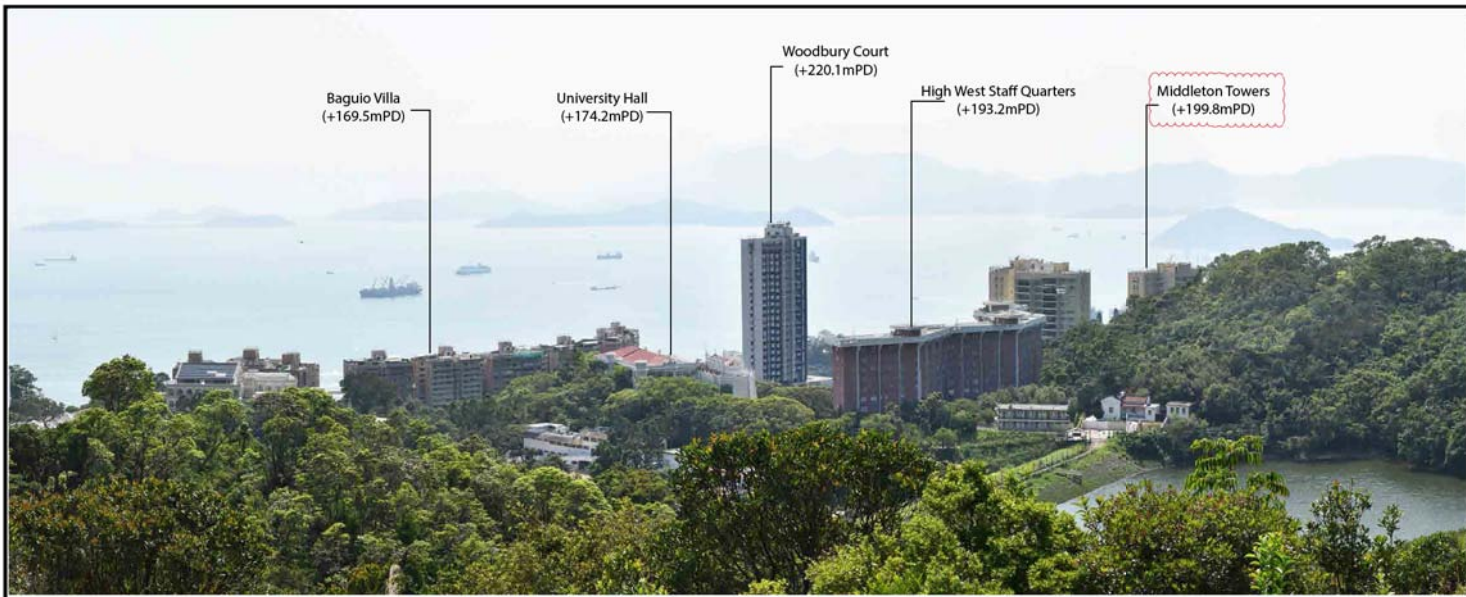
SCALE	N.T.S.	DATE	May 2019
CHECKED	CJF	DRAWN	AL
FIGURE NO.	Figure 7.4		REV
			-

**SCENIC Landscape Studio Limited**  
 LANDSCAPE ARCHITECTURE, LANDSCAPE PLANNING & ASSESSMENT

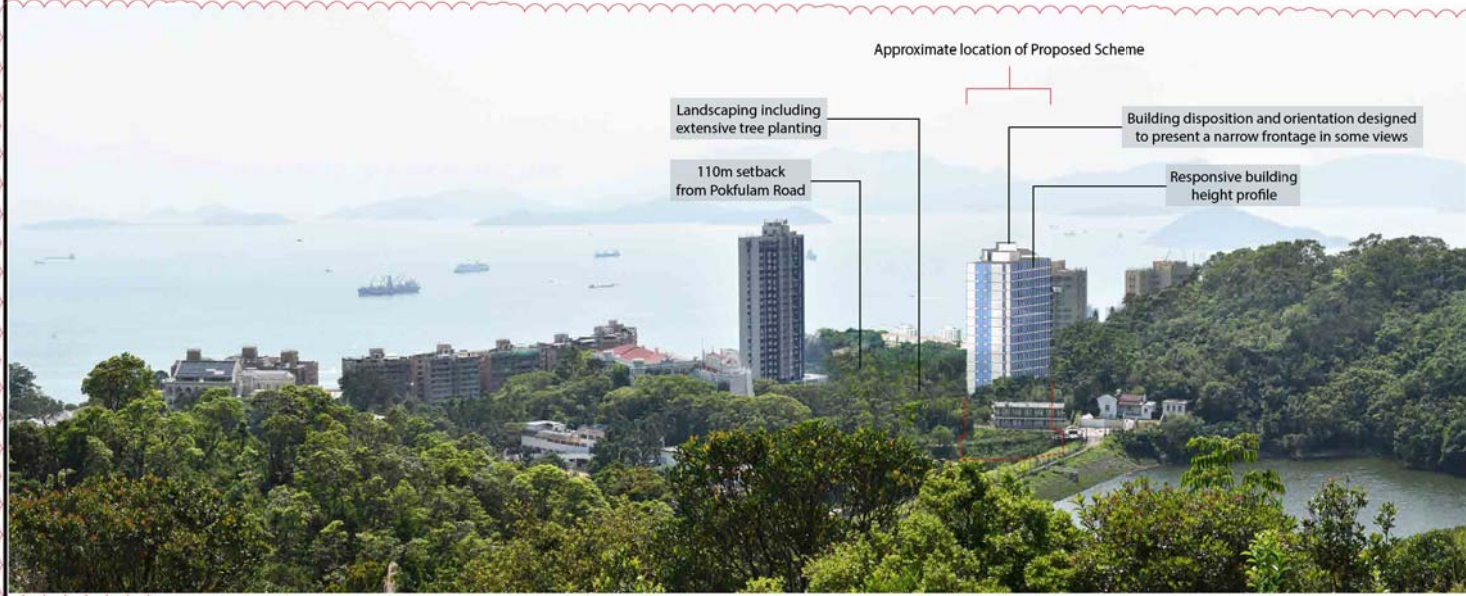
12/F So Hong Commercial Building, 41-47 Telephone: 2868 2832  
 Jersey Street, Shaueng Wan, Hong Kong Fax: 8516 2422  
 Website: www.scenicstudio.com

(資料來源：由申請人提供)  
 (SOURCE : SUBMITTED BY THE APPLICANT)

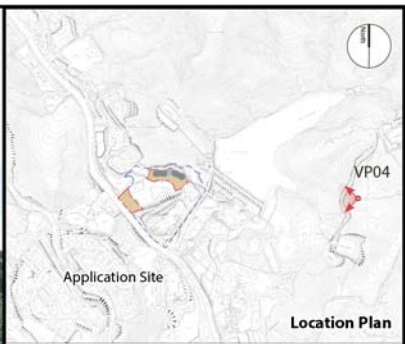
參考編號 REFERENCE No. A/H10/94	繪圖 DRAWING A - 7
-----------------------------------	------------------------



Vantage Point 04: View looking west from lookout point on Hong Kong Trail Section 2 (The Peak) (Existing Situation)



Vantage Point 04: View looking west from lookout point on Hong Kong Trail Section 2 (The Peak) (Proposed Scheme at Year 10)



**Vantage Point 04 (VP04)**

Vantage point elevation: +226.3mPD  
Viewing distance: 454m  
Maximum building height of Proposed Scheme: +220.75mPD at R/F

FIGURE TITLE			
S16 Application for Proposed Student Hostel at Rural Building Lot No. 925, High West, Pok Fu Lam			
<b>Visual Impact Assessment: Photomontages</b>			

SCALE	N.T.S.	DATE	May 2019
CHECKED	CJF	DRAWN	AL
FIGURE NO.	Figure 7.5		REV
			A

**SCENIC Landscape Studio Limited**  
LANDSCAPE ARCHITECTURE, LANDSCAPE PLANNING & ASSESSMENT

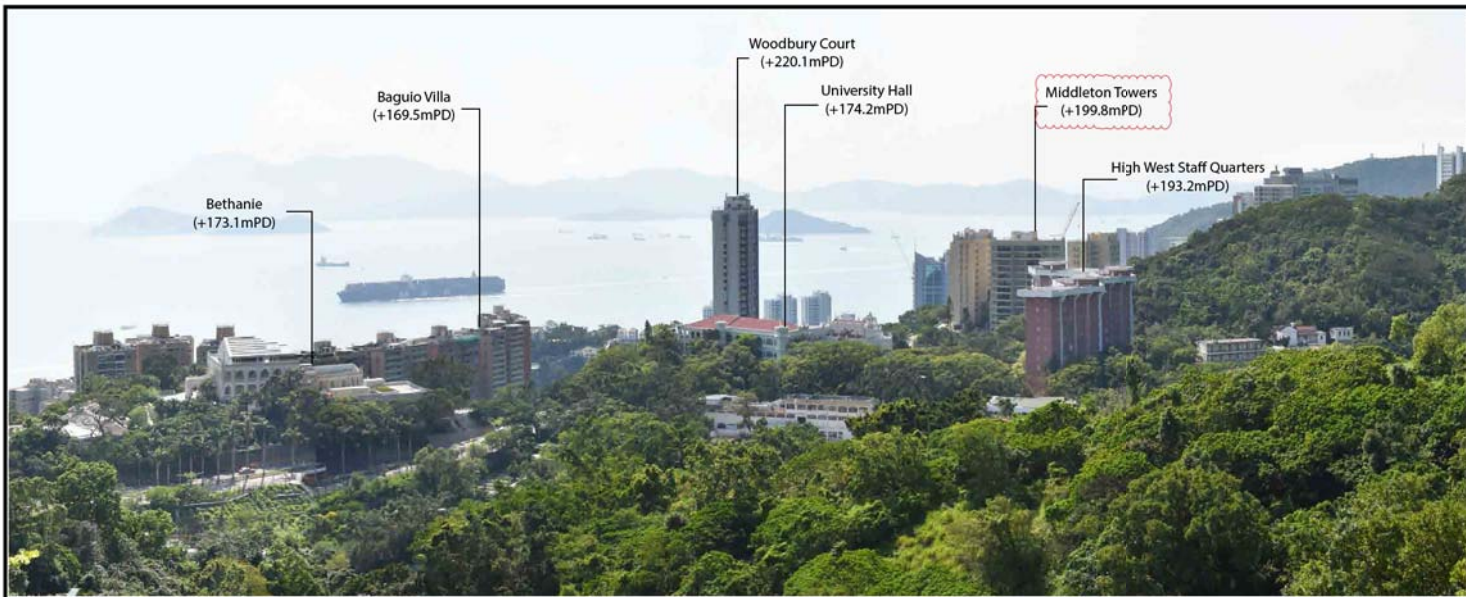
12/F So Hong Commercial Building, 41-47 Jervois Street, Sheung Wan, Hong Kong

Telephone: 2468 2422  
Facsimile: 3016 2422  
Website: scenicstudio.com

(資料來源：由申請人提供)  
(SOURCE : SUBMITTED BY THE APPLICANT)

參考編號 REFERENCE No. A/H10/94	繪圖 DRAWING A - 8
-----------------------------------	------------------------

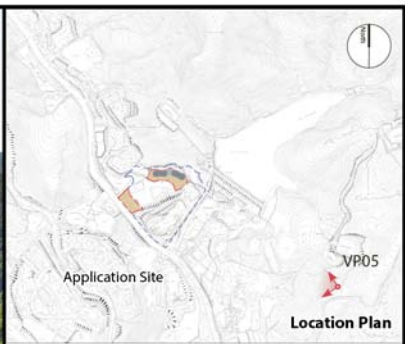




Vantage Point 05: View looking north west from Pok Fu Lam Reservoir Trail (Existing Situation)



Vantage Point 05: View looking north west from Pok Fu Lam Reservoir Trail (Proposed Scheme at Year 10)



**Vantage Point 05 (VP05)**

Vantage point elevation: +214mPD  
 Viewing distance: 494m  
 Maximum building height of Proposed Scheme: +220.75mPD at R/F

FIGURE TITLE			
S16 Application for Proposed Student Hostel at Rural Building Lot No. 925, High West, Pok Fu Lam			
<b>Visual Impact Assessment: Photomontages</b>			

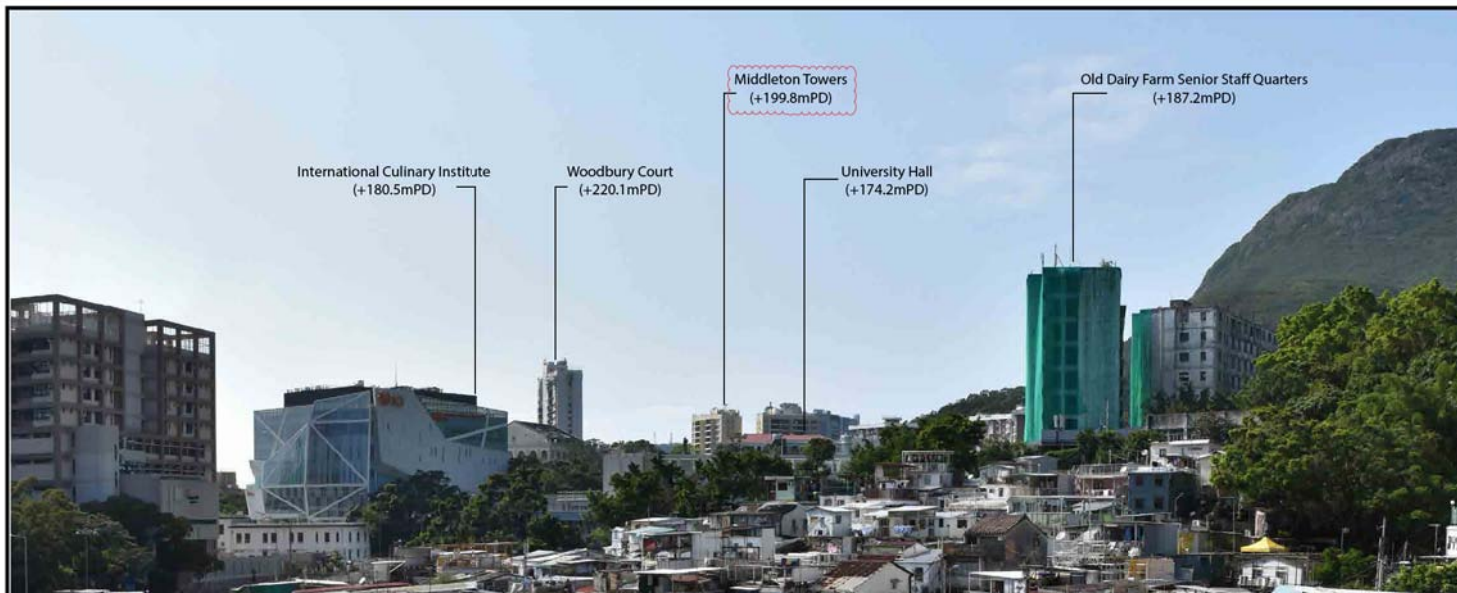
SCALE	N.T.S.	DATE	May 2019
CHECKED	CJF	DRAWN	AL
FIGURE NO.	Figure 7.6		REV
			A

**SCENIC Landscape Studio Limited**  
 LANDSCAPE ARCHITECTURE, LANDSCAPE PLANNING & ASSESSMENT

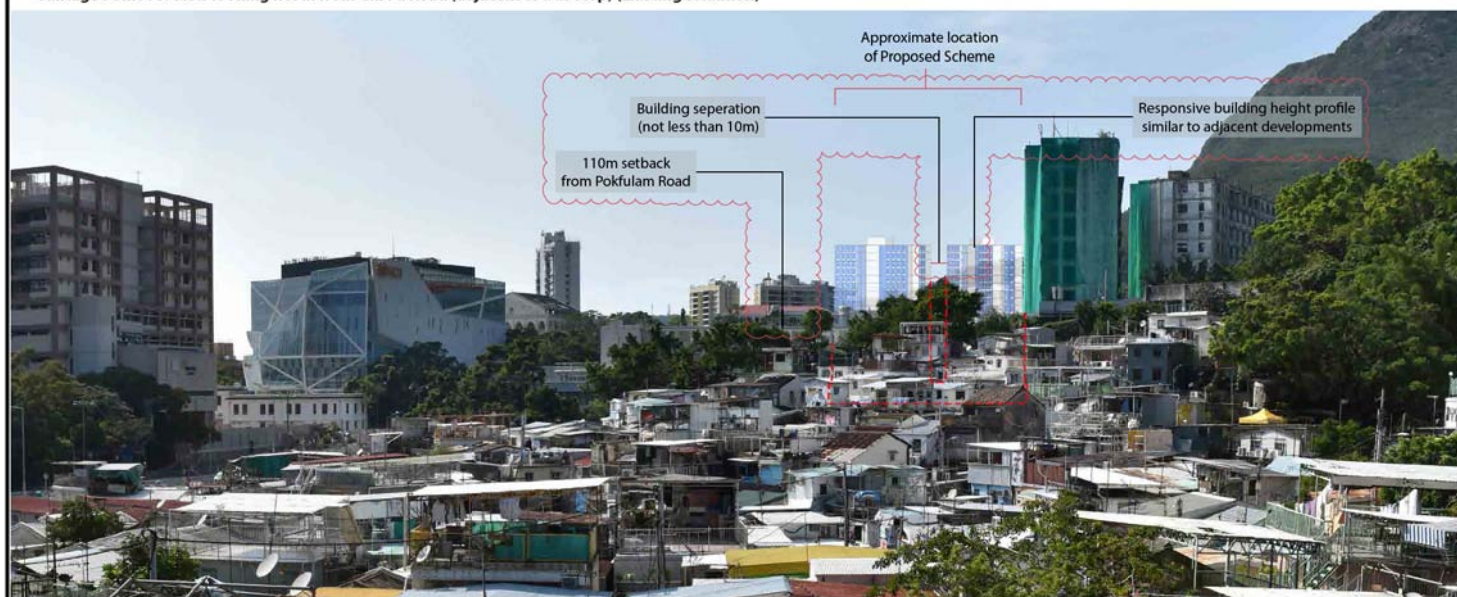
12/F So Hong Commercial Building, 41-47 Jervois Street, Sheung Wan, Hong Kong  
 Telephone: 2468 2422  
 Facsimile: 3816 2422  
 Website: scenicstudio.com

(資料來源：由申請人提供)  
 (SOURCE : SUBMITTED BY THE APPLICANT)

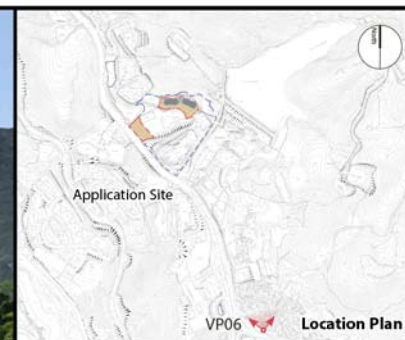
參考編號 REFERENCE No. A/H10/94	繪圖 DRAWING A - 9
-----------------------------------	------------------------



Vantage Point 06: View looking north from Chi Fu Road (adjacent to bus stop) (Existing Situation)



Vantage Point 06: View looking north from Chi Fu Road (adjacent to bus stop) (Proposed Scheme at Year 10)



**Vantage Point 06 (VP06)**

Vantage point elevation: +143.5mPD  
 Viewing distance: 625m  
 Maximum building height of Proposed Scheme: +220.75mPD at R/F

FIGURE TITLE  
 S16 Application for Proposed Student Hostel at Rural Building Lot No. 925, High West, Pok Fu Lam

**Visual Impact Assessment: Photomontages**

SCALE	N.T.S.	DATE	May 2019
CHECKED	CJF	DRAWN	AL
FIGURE NO.	Figure 7.7		REV A

**SCENIC Landscape Studio Limited**  
 LANDSCAPE ARCHITECTURE, LANDSCAPE PLANNING & ASSESSMENT

12/F So Hong Commercial Building, 41-47 Jervois Street, Sheung Wan, Hong Kong  
 Telephone: 2468 2422  
 Facsimile: 3016 2422  
 Website: scenicstudio.com

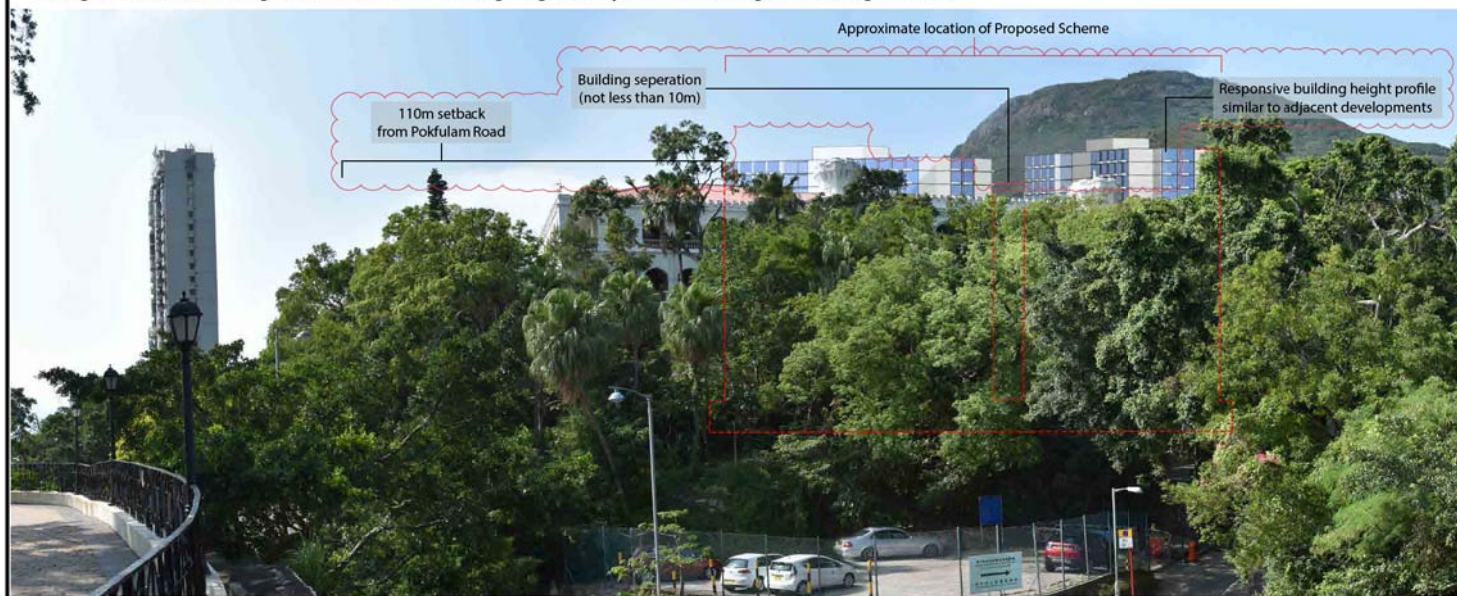
(資料來源：由申請人提供)  
 (SOURCE : SUBMITTED BY THE APPLICANT)

參考編號  
 REFERENCE No.  
 A/H10/94

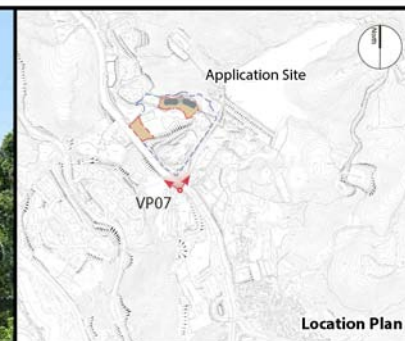
繪圖  
 DRAWING  
 A - 10



Vantage Point 07: View looking north from the Bethanie (Hong Kong Academy for the Performing Arts) (Existing Situation)



Vantage Point 07: View looking north from the Bethanie (Hong Kong Academy for the Performing Arts) (Proposed Scheme at Year 10)



**Vantage Point 07 (VP07)**

Vantage point elevation: +156.4mPD  
 Viewing distance: 228m  
 Maximum building height of Proposed Scheme: +220.75mPD at R/F

FIGURE TITLE  
 S16 Application for Proposed Student Hostel at Rural Building Lot No. 925, High West, Pok Fu Lam

**Visual Impact Assessment: Photomontages**

SCALE	N.T.S.	DATE	May 2019
CHECKED	CJF	DRAWN	AL
FIGURE NO.	Figure 7.8		REV A

**SCENIC Landscape Studio Limited**  
 LANDSCAPE ARCHITECTURE, LANDSCAPE PLANNING & ASSESSMENT

12/F So Hong Commercial Building, 41-47 Jervois Street, Sheung Wan, Hong Kong  
 Telephone: 2468 2422  
 Facsimile: 3816 2422  
 Website: www.scenicstudio.com

(資料來源：由申請人提供)  
 (SOURCE : SUBMITTED BY THE APPLICANT)

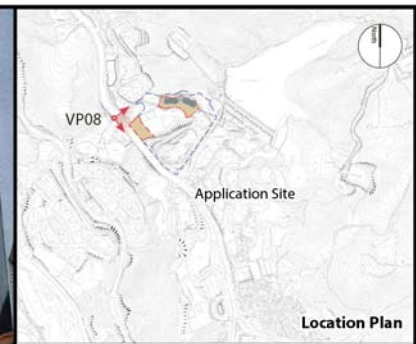
參考編號 REFERENCE No. A/H10/94	繪圖 DRAWING A - 11
-----------------------------------	-------------------------



Vantage Point 08: View looking east from Pokfulam Road (Existing Situation)



Vantage Point 08: View looking east from Pokfulam Road (Proposed Scheme at Year 10)



**Vantage Point 08 (VP08)**

Vantage point elevation: +136mPD  
 Viewing distance: 40m  
 Maximum building height of Proposed Scheme: +220.75mPD at R/F

FIGURE TITLE  
 S16 Application for Proposed Student Hostel at Rural Building Lot No. 925, High West, Pok Fu Lam

**Visual Impact Assessment: Photomontages**

SCALE	N.T.S.	DATE	May 2019
CHECKED	CJF	DRAWN	AL
FIGURE NO.	Figure 7.9		REV A

**SCENIC Landscape Studio Limited**  
 LANDSCAPE ARCHITECTURE, LANDSCAPE PLANNING & ASSESSMENT

12/F So Hong Commercial Building, 41-47 Jervois Street, Sheung Wan, Hong Kong  
 Telephone: 2468 2422  
 Facsimile: 3816 2422  
 Website: scenicstudio.com

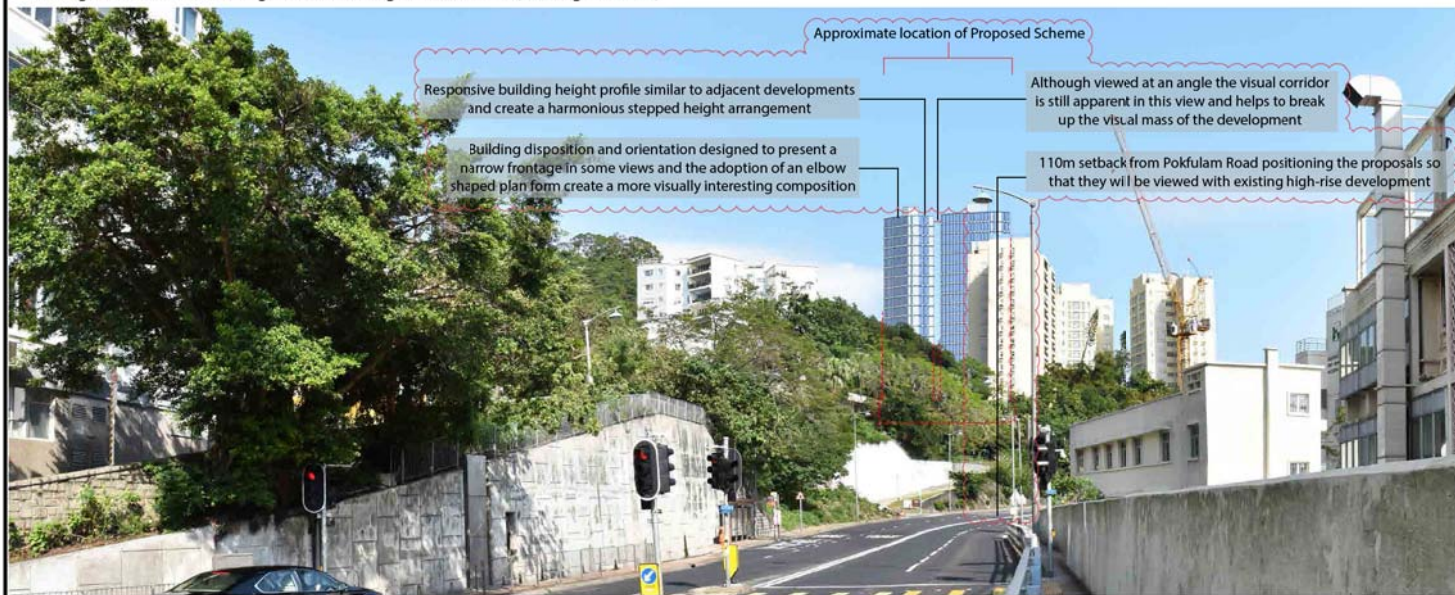
(資料來源：由申請人提供)  
 (SOURCE : SUBMITTED BY THE APPLICANT)

參考編號  
 REFERENCE No.  
 A/H10/94

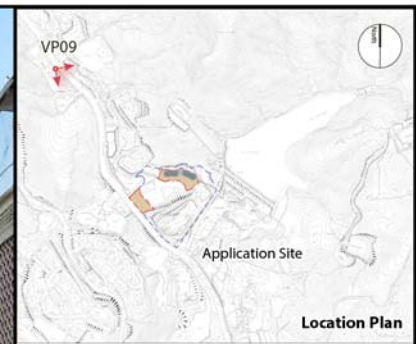
繪圖  
 DRAWING  
 A - 12



Vantage Point 09: View looking south east along Pokfulam Road (Existing Situation)



Vantage Point 09: View looking south east along Pokfulam Road (Proposed Scheme at Year 10)



**Vantage Point 09 (VP09)**

Vantage point elevation: +128.9mPD  
 Viewing distance: 391m  
 Maximum building height of Proposed Scheme: +220.75mPD at R/F

FIGURE TITLE

S16 Application for Proposed Student Hostel at Rural Building Lot No. 925, High West, Pok Fu Lam

**Visual Impact Assessment: Photomontages**

SCALE	N.T.S.	DATE	May 2019
CHECKED	CJF	DRAWN	AL
FIGURE NO.	Figure 7.10		REV
			A

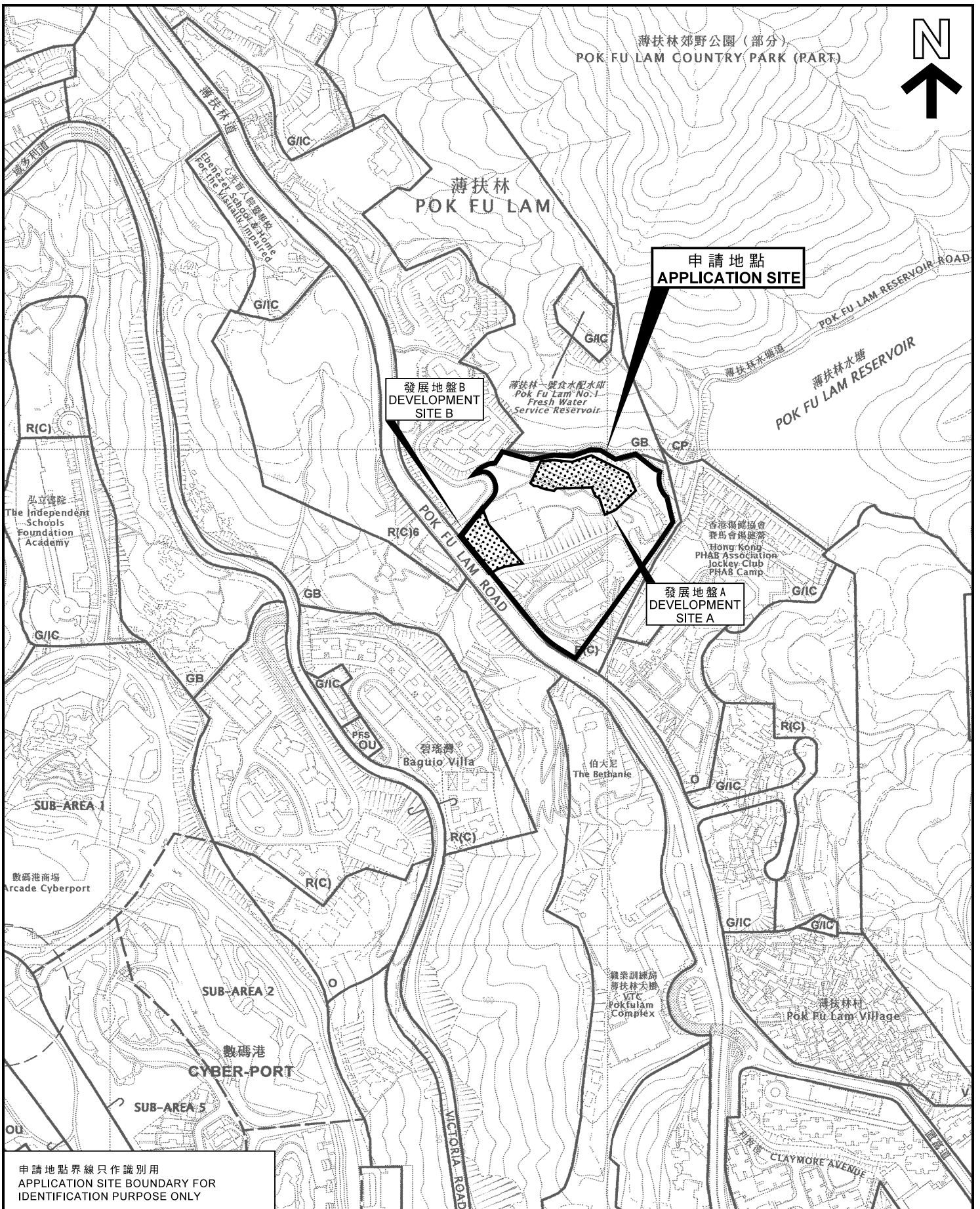
**SCENIC Landscape Studio Limited**  
 LANDSCAPE ARCHITECTURE, LANDSCAPE PLANNING & ASSESSMENT

12/F So Hong Commercial Building, 41-47 Jervois Street, Sheung Wan, Hong Kong  
 Telephone: 2468 2422  
 Facsimile: 3816 2422  
 Website: scenicstudio.com

(資料來源：由申請人提供)  
 (SOURCE : SUBMITTED BY THE APPLICANT)

參考編號  
 REFERENCE No.  
 A/H10/94

繪圖  
 DRAWING  
 A - 13

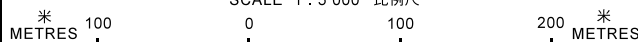


申請地點界線只作識別用  
APPLICATION SITE BOUNDARY FOR  
IDENTIFICATION PURPOSE ONLY

**位置圖 LOCATION PLAN**

擬議住宿機構 (學生宿舍)  
香港薄扶林西高山鄉郊建屋地段第925號  
PROPOSED RESIDENTIAL INSTITUTION  
(STUDENT HOSTEL)  
RURAL BUILDING LOT 925, HIGH WEST,  
POK FU LAM, HONG KONG

SCALE 1 : 5 000 比例尺



規劃署  
PLANNING  
DEPARTMENT



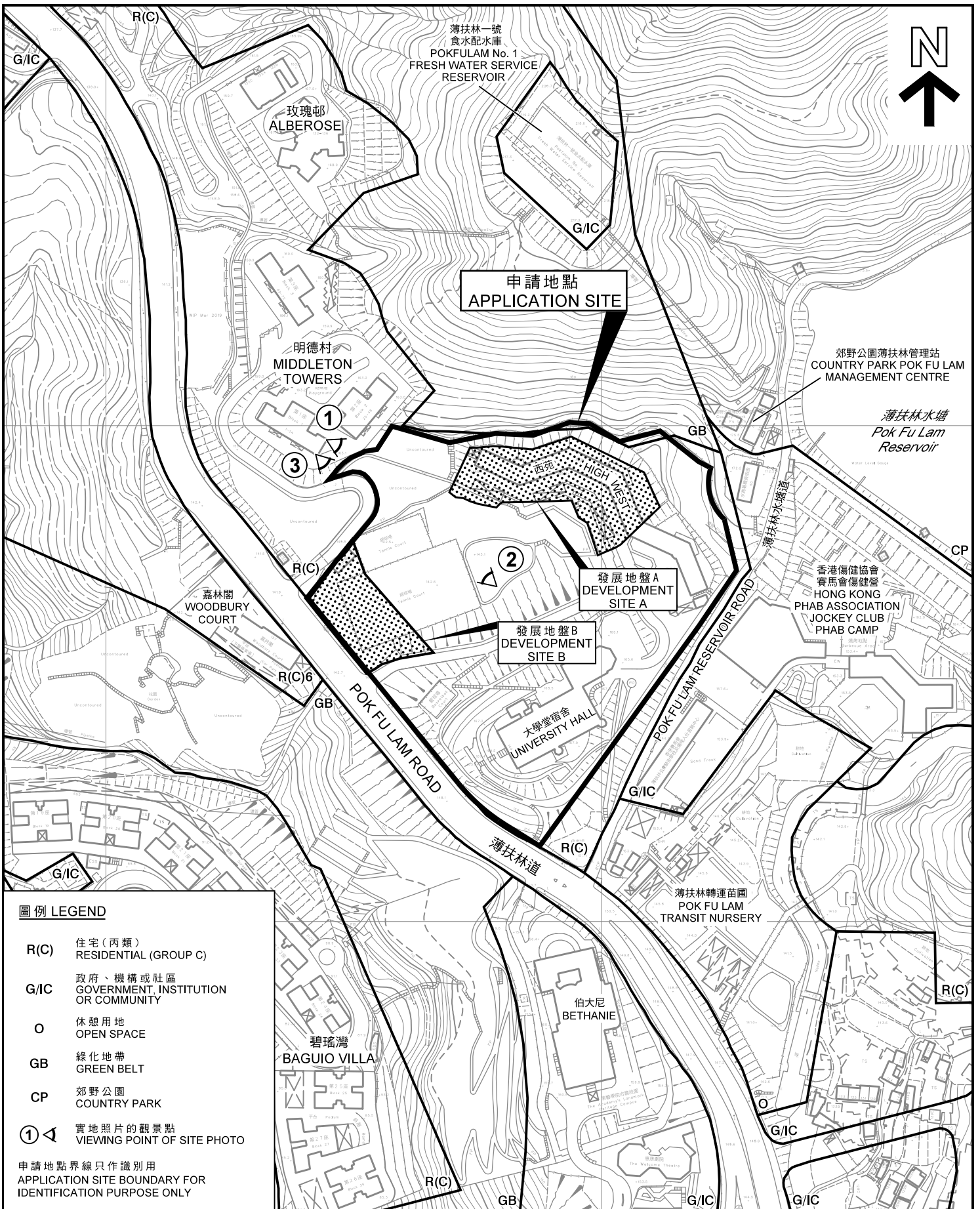
參考編號  
REFERENCE No.

A/H10/94

圖 PLAN

A - 1

本摘要圖於2019年7月25日擬備，  
所根據的資料為於2018年8月21日  
核准的分區計劃大綱圖編號S/H10/17  
EXTRACT PLAN PREPARED ON 25.7.2019  
BASED ON OUTLINE ZONING PLAN  
No. S/H10/17 APPROVED ON 21.8.2018



**圖例 LEGEND**

- R(C) 住宅 (丙類)  
RESIDENTIAL (GROUP C)
- G/IC 政府、機構或社區  
GOVERNMENT, INSTITUTION  
OR COMMUNITY
- O 休憩用地  
OPEN SPACE
- GB 綠化地帶  
GREEN BELT
- CP 郊野公園  
COUNTRY PARK
- ① ◀ 實地照片的觀景點  
VIEWING POINT OF SITE PHOTO

申請地點界線只作識別用  
APPLICATION SITE BOUNDARY FOR  
IDENTIFICATION PURPOSE ONLY

**平面圖 SITE PLAN**

擬議住宿機構 (學生宿舍)  
香港薄扶林西高山鄉郊建屋地段第925號  
PROPOSED RESIDENTIAL INSTITUTION  
(STUDENT HOSTEL)  
RURAL BUILDING LOT 925, HIGH WEST,  
POK FU LAM, HONG KONG

SCALE 1:2 500 比例尺

米 50 0 50 100 米  
METRES

規劃署  
PLANNING  
DEPARTMENT



參考編號  
REFERENCE No.

A/H10/94

圖 PLAN

A - 2



申請地點界線只作識別用  
APPLICATION SITE BOUNDARY FOR IDENTIFICATION PURPOSE ONLY

**實地照片 SITE PHOTOS**

擬議住宿機構（學生宿舍）  
香港薄扶林西高山鄉郊建屋地段第925號  
PROPOSED RESIDENTIAL INSTITUTION  
(STUDENT HOSTEL)  
RURAL BUILDING LOT 925, HIGH WEST,  
POK FU LAM, HONG KONG

規劃署  
PLANNING  
DEPARTMENT



本圖於2019年7月30日擬備，所根據的資料為攝於2019年7月12日的實地照片  
EXTRACT PLAN PREPARED ON 30.7.2019  
BASED ON SITE PHOTOS TAKEN ON  
12.7.2019

參考編號  
REFERENCE No.  
A/H10/94

圖 PLAN  
A - 3



3



申請地點界線只作識別用  
APPLICATION SITE BOUNDARY FOR IDENTIFICATION PURPOSE ONLY

本圖於2019年7月30日擬備，所根據的資料為攝於2019年7月12日的實地照片  
EXTRACT PLAN PREPARED ON 30.7.2019 BASED ON SITE PHOTO TAKEN ON 12.7.2019

**實地照片 SITE PHOTO**

擬議住宿機構（學生宿舍）  
香港薄扶林西高山鄉郊建屋地段第925號  
PROPOSED RESIDENTIAL INSTITUTION  
(STUDENT HOSTEL)  
RURAL BUILDING LOT 925, HIGH WEST,  
POK FU LAM, HONG KONG

規劃署  
PLANNING  
DEPARTMENT



參考編號  
REFERENCE No.  
A/H10/94

圖 PLAN  
A - 4