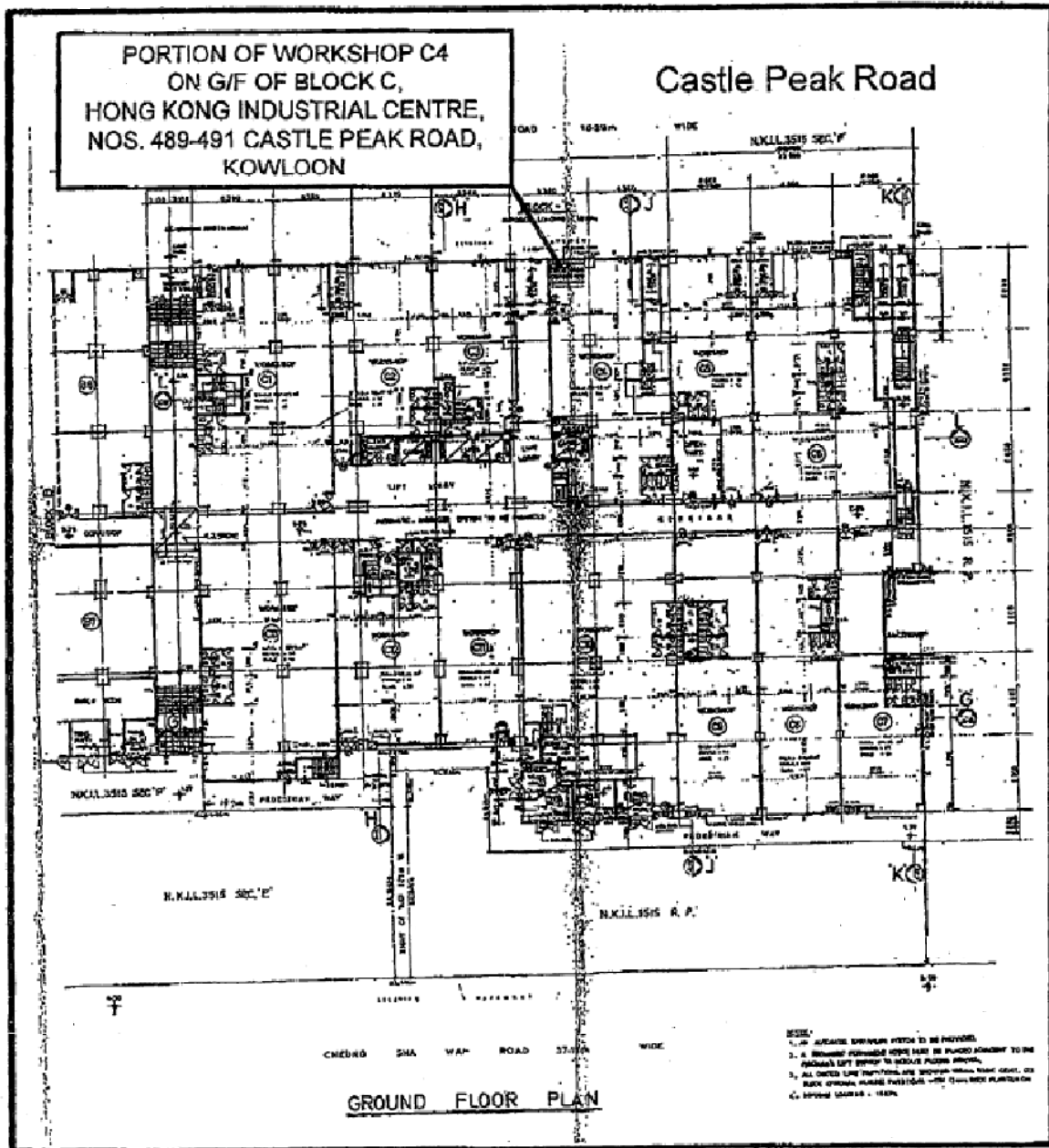




永利行測量師有限公司
RHL Surveyors Limited
Real Estate Solution & Surveying Practice

Site Plan



Not to scale – for identification purpose only

永利行集團成員 Member of RHL International

Your Professional • Your Solution

info@rhl-int.com | www.rhl-int.com

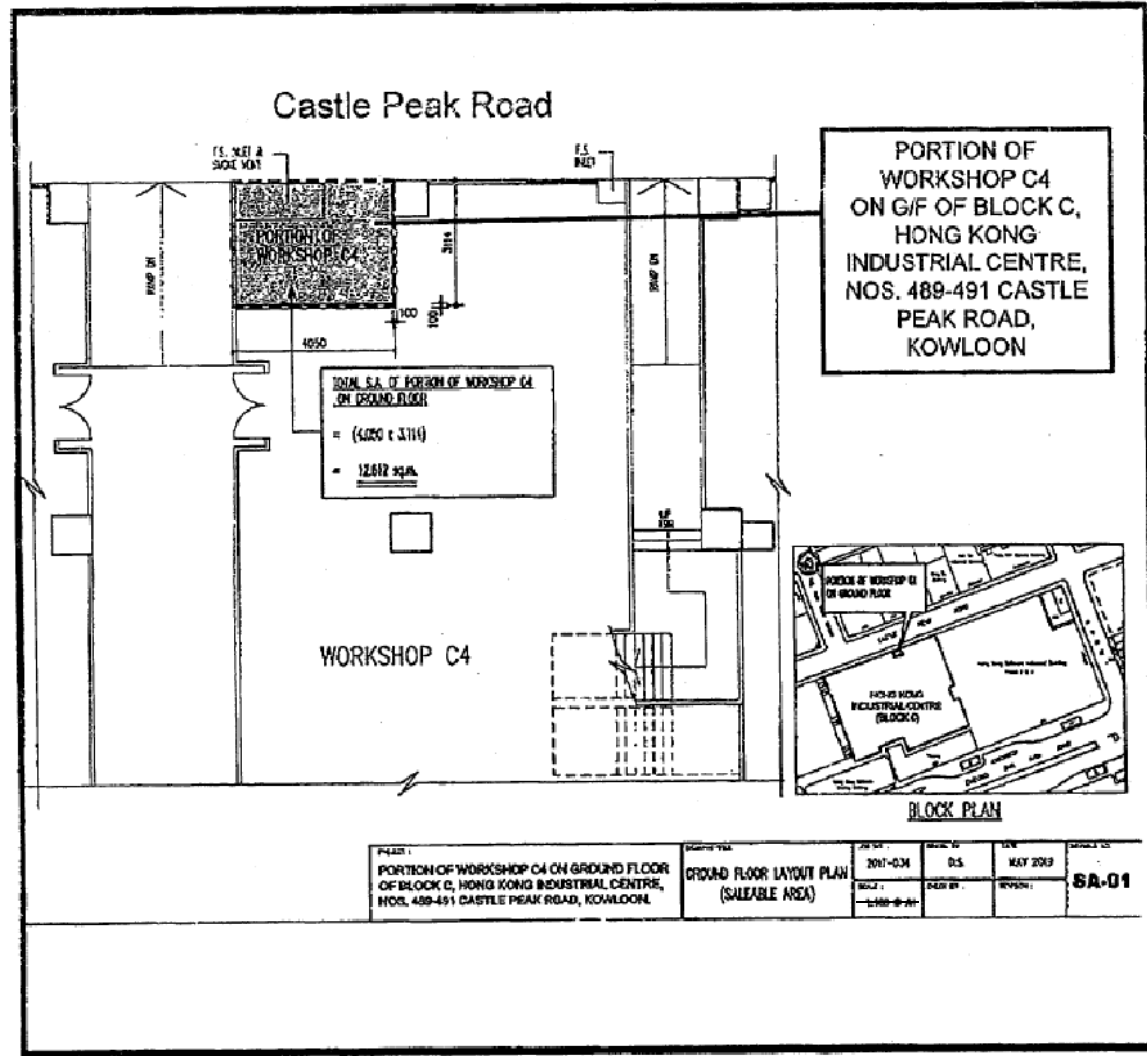
參考編號 REFERENCE No. A/K5/805	繪圖 DRAWING A-1
-----------------------------------	----------------------

(來源：附錄 Ia)
 (Source : Appendix Ia)

Your Professional - Your Solution

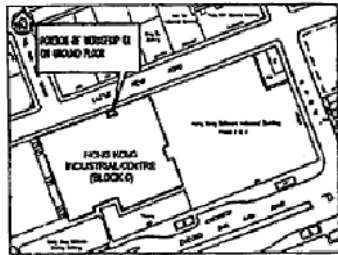
Not to scale - for identification purpose only

永利行集團成員 Member of RHL International
 info@rhl-int.com | www.rhl-int.com



PORTION OF
 WORKSHOP C4
 ON G/F OF BLOCK C,
 HONG KONG
 INDUSTRIAL CENTRE,
 NOS. 489-491 CASTLE
 PEAK ROAD,
 KOWLOON

TOTAL S.A. OF PORTION OF WORKSHOP C4
 ON GROUND FLOOR
 = (4050 x 3114)
 = 12612 sqm



PROJECT PORTION OF WORKSHOP C4 ON GROUND FLOOR OF BLOCK C, HONG KONG INDUSTRIAL CENTRE, NOS. 489-491 CASTLE PEAK ROAD, KOWLOON.	DRAWING TITLE GROUND FLOOR LAYOUT PLAN (SALEABLE AREA)	JOB NO. 2017-024	DRAWN BY D.S.	DATE MAY 2018	REVISION -	DRAWING NO. 6A-01
--	--	---------------------	------------------	------------------	---------------	----------------------

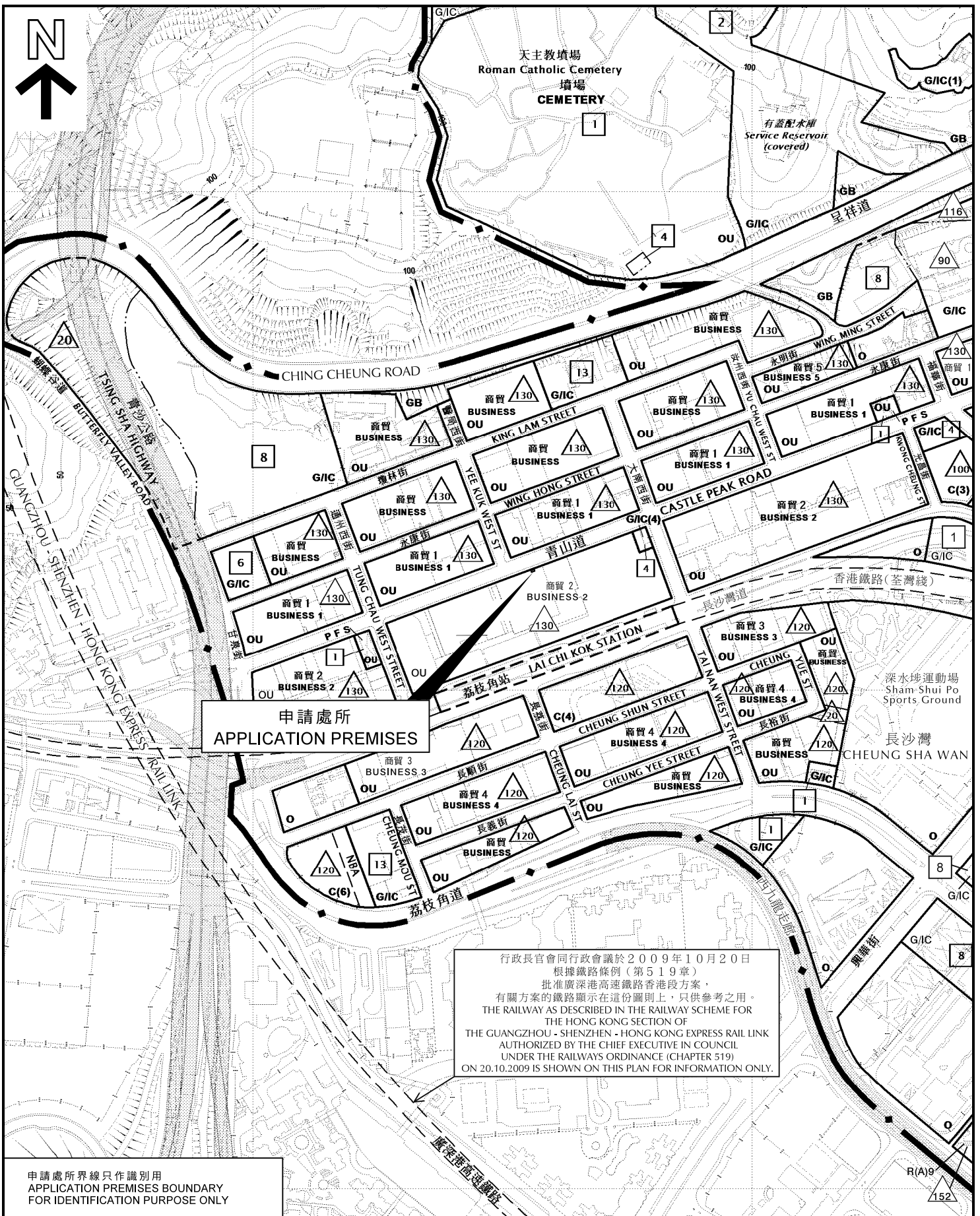
Site Plan

永利行測量師有限公司
 RHL Surveyors Limited
 Real Estate Solution & Surveying Practice



參考編號 REFERENCE No. A/K5/805	繪圖 DRAWING A-2
-----------------------------------	----------------------

(來源：附錄 Ia)
 (Source : Appendix Ia)



申請處所界線只作識別用
APPLICATION PREMISES BOUNDARY
FOR IDENTIFICATION PURPOSE ONLY

本摘要圖於2019年7月26日擬備,
所根據的資料為於2016年12月6日
核准的分區計劃大綱圖編號S/K5/37
EXTRACT PLAN PREPARED ON 26.7.2019
BASED ON OUTLINE ZONING PLAN No.
S/K5/37 APPROVED ON 6.12.2016

位置圖 LOCATION PLAN

擬議商店及服務行業
九龍青山道489-491號
香港工業中心C座地下C4工場(部分)
PROPOSED SHOP AND SERVICES
PORTION OF WORKSHOP C4, G/F, BLOCK C,
HONG KONG INDUSTRIAL CENTRE,
489-491 CASTLE PEAK ROAD, KOWLOON

SCALE 1 : 5 000 比例尺

米 100 0 100 200 米
METRES

規劃署
PLANNING
DEPARTMENT

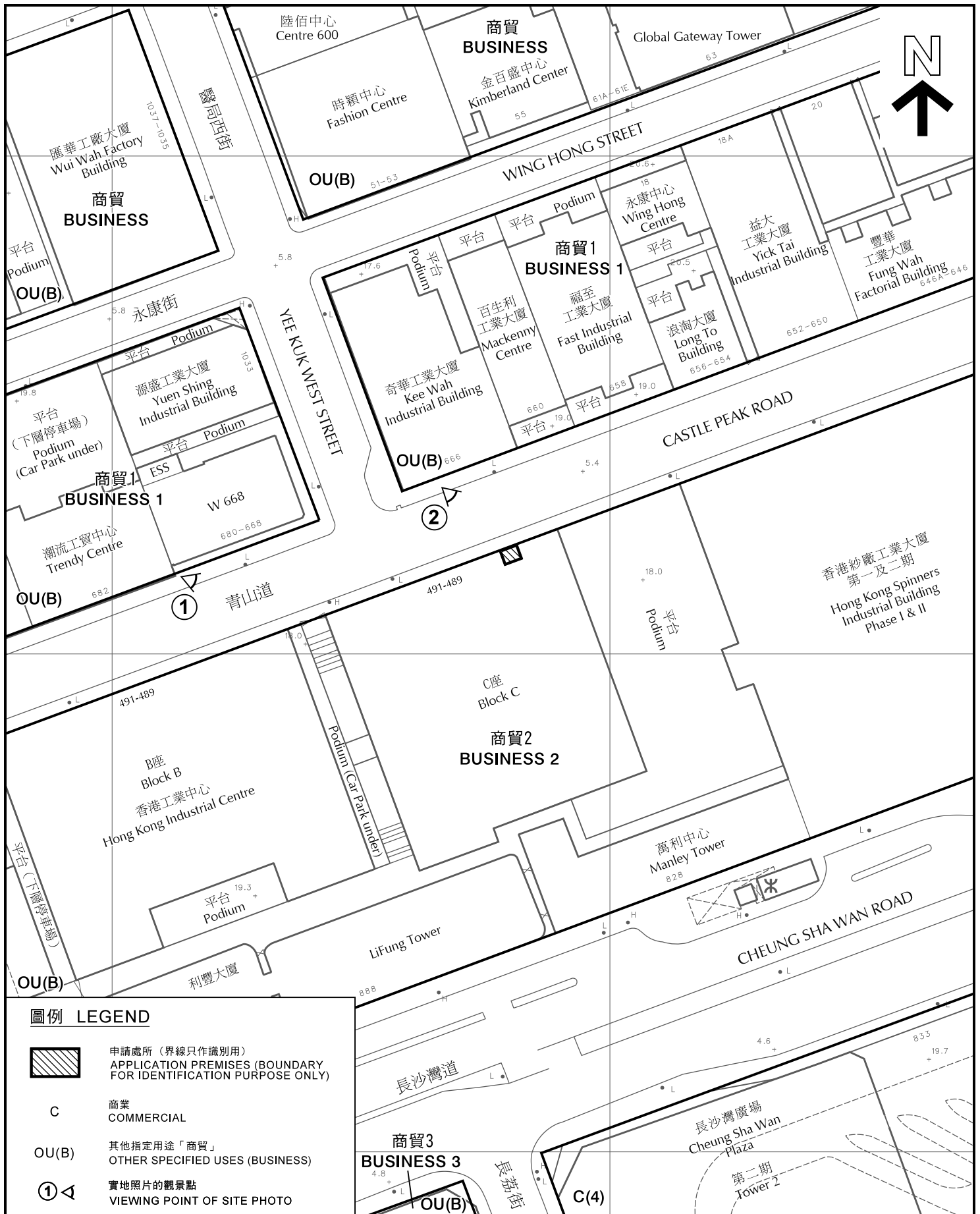


參考編號
REFERENCE No.

A/K5/805

圖 PLAN

A-1



圖例 LEGEND

-  申請處所 (界線只作識別用)
APPLICATION PREMISES (BOUNDARY FOR IDENTIFICATION PURPOSE ONLY)
- C** 商業
COMMERCIAL
- OU(B)** 其他指定用途「商貿」
OTHER SPECIFIED USES (BUSINESS)
-  實地照片的觀景點
VIEWING POINT OF SITE PHOTO

平面圖 SITE PLAN

商店及服務行業
九龍青山道489-491號
香港工業中心C座地下C4工場(部分)
SHOP AND SERVICES
PORTION OF WORKSHOP C4, G/F, BLOCK C,
HONG KONG INDUSTRIAL CENTRE,
489-491 CASTLE PEAK ROAD, KOWLOON
SCALE 1 : 1 000 比例尺

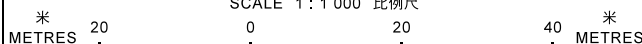
規劃署
**PLANNING
DEPARTMENT**



參考編號
REFERENCE No.
A/K5/805

圖 **PLAN**
A-2

本摘要圖於2019年7月11日擬備，所根據的資料為測量圖編號11-NW-8A及C EXTRACT PLAN PREPARED ON 11.7.2019 BASED ON SURVEY SHEETS No. 11-NW-8A & C



785 (22.9.17)

商店及服務行業
(地產代理)
SHOP AND SERVICES
(ESTATE AGENCY)

532 (27.6.03)

成衣陳列室及附屬貨倉
(有效期屆滿)
SHOWROOM FOR GARMENTS
& ANCILLARY STORAGE
(EXPIRED)

609 (17.3.06)

臨時商店及服務行業
(成衣陳列室) (有效期屆滿)
TEMPORARY SHOP AND SERVICES
(SHOWROOM FOR GARMENTS)
(EXPIRED)

673 (8.5.09)

商店及服務行業 (成衣陳列室)
SHOP AND SERVICES
(SHOWROOM FOR GARMENTS)

508 (13.9.02)

陳列室 (有效期屆滿)
SHOWROOM (EXPIRED)

684 (4.12.09)

商店及服務行業 (成衣陳列室)
SHOP AND SERVICES
(SHOWROOM FOR GARMENTS)

618 (1.9.06)

臨時商店及服務行業 (成衣陳列室) (有效期屆滿)
TEMPORARY SHOP AND SERVICES
(SHOWROOM FOR GARMENTS)
(EXPIRED)

545 (9.1.04)

商店及服務行業 (陳列室及附屬貨倉)
SHOP AND SERVICES
(SHOWROOM WITH ANCILLARY STORAGE)

559 (26.3.04)

臨時商店及服務行業 (陳列室)
(有效期屆滿)
TEMPORARY SHOP AND SERVICES
(SHOWROOM)
(EXPIRED)

765 (17.7.15)

商店及服務行業
SHOP AND SERVICES

563 (14.5.04)

商店及服務行業
(零售店) (有效期屆滿)
SHOP AND SERVICES
(RETAIL SHOP)
(EXPIRED)

667 (13.2.09)

商店及服務行業 (成衣陳列室)
SHOP AND SERVICES
(SHOWROOM FOR GARMENTS)

603 (13.1.06)

臨時商店及服務行業 (成衣陳列室) (有效期屆滿)
TEMPORARY SHOP AND SERVICES (SHOWROOM FOR GARMENTS)
(EXPIRED)

544 (9.1.04)

商店及服務行業 (陳列室)
(有效期屆滿)
SHOP AND SERVICES (SHOWROOM)
(EXPIRED)

536 (15.8.03)

成衣陳列室
SHOWROOM FOR GARMENTS

先前申請
PREVIOUS APPLICATION
168 (23.7.93)

陳列室
SHOWROOM

先前申請
PREVIOUS APPLICATION
535 (15.8.03)

成衣陳列室
SHOWROOM FOR GARMENTS

538 (19.9.03)

成衣陳列室
SHOWROOM FOR GARMENTS

551 (9.1.04)

商店及服務行業 (陳列室) (有效期屆滿)
SHOP AND SERVICES (SHOWROOM) (EXPIRED)

757 (17.10.14)

商店及服務行業
SHOP AND SERVICES

圖例 LEGEND

申請處所 (界線只作識別用)
APPLICATION PREMISES
(BOUNDARY FOR IDENTIFICATION PURPOSE ONLY)

已撤銷申請不顯示在圖面
REVOKED APPLICATION NOT SHOWN

香港工業中心C座地下有關申請位置圖
LOCATION PLAN OF APPLICATIONS ON GROUND FLOOR, BLOCK C, HONG KONG INDUSTRIAL CENTRE

擬議商店及服務行業
九龍青山道489-491號
香港工業中心C座地下C4工場(部分)
PROPOSED SHOP AND SERVICES
PORTION OF WORKSHOP C4, G/F, BLOCK C,
HONG KONG INDUSTRIAL CENTRE,
489-491 CASTLE PEAK ROAD, KOWLOON

規劃署
PLANNING
DEPARTMENT



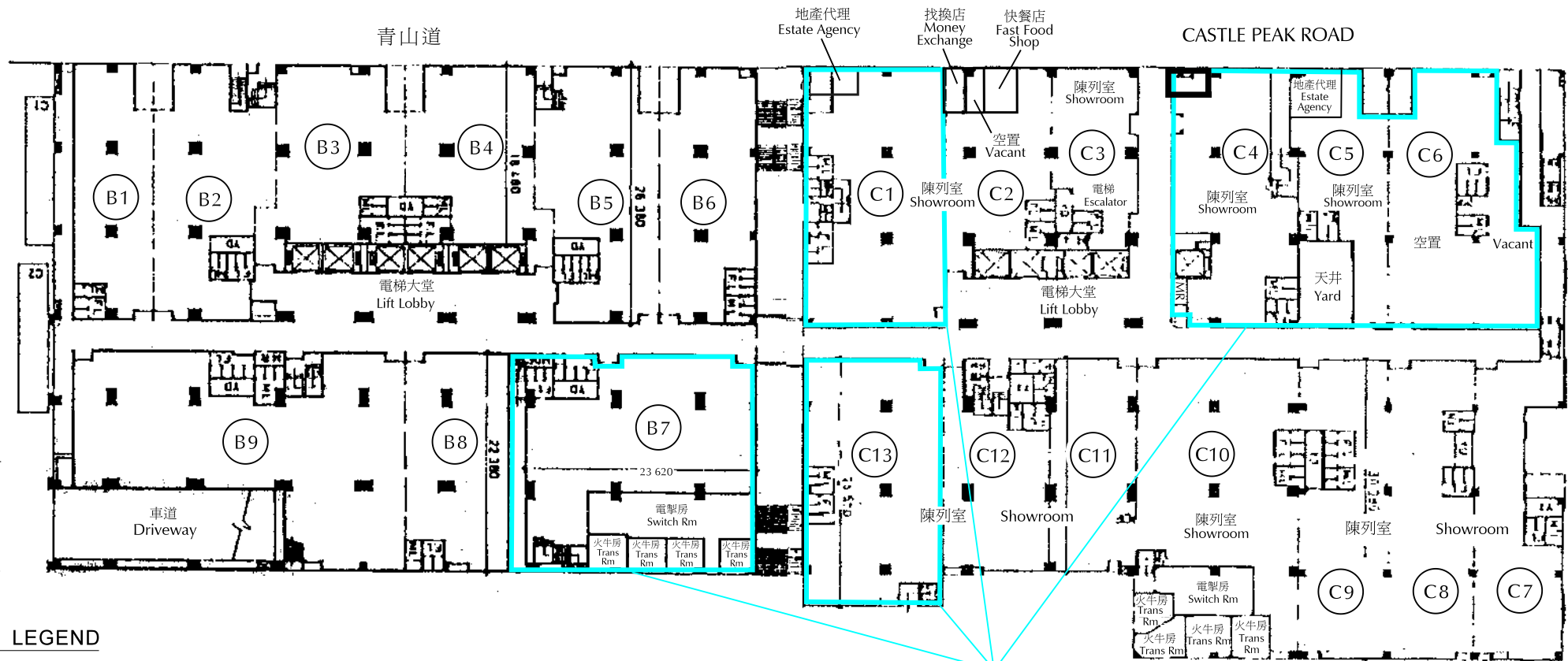
參考編號
REFERENCE No.

A/K5/805

圖 PLAN

A-2a

本圖於2019年8月1日擬備
PLAN PREPARED ON 1.8.2019



圖例 LEGEND

申請處所 (界線只作識別用)
APPLICATION PREMISES
(BOUNDARY FOR IDENTIFICATION PURPOSE ONLY)

133 (16.8.91) s.17 被拒絕的申請
REJECTED APPLICATION

133 (16.8.91) 會議日期 DATE OF MEETING
 申請編號 APPLICATION NUMBER

已撤銷申請不顯示在圖面
REVOKED APPLICATION NOT SHOWN

先前申請
PREVIOUS APPLICATION
133 (16.8.91) s.17
陳列室
SHOWROOM

香港工業中心B座及C座地下有關申請位置圖
LOCATION PLAN OF APPLICATION ON GROUND FLOOR, BLOCKS B & C, HONG KONG INDUSTRIAL CENTRE

本圖於2019年8月1日擬備
PLAN PREPARED ON 1.8.2019

擬議商店及服務行業
九龍青山道489-491號
香港工業中心C座地下C4工場(部分)
PROPOSED SHOP AND SERVICES
PORTION OF WORKSHOP C4, G/F, BLOCK C,
HONG KONG INDUSTRIAL CENTRE,
489-491 CASTLE PEAK ROAD, KOWLOON

規劃署
PLANNING
DEPARTMENT



參考編號
REFERENCE No.

A/K5/805

圖 PLAN

A-2b

1

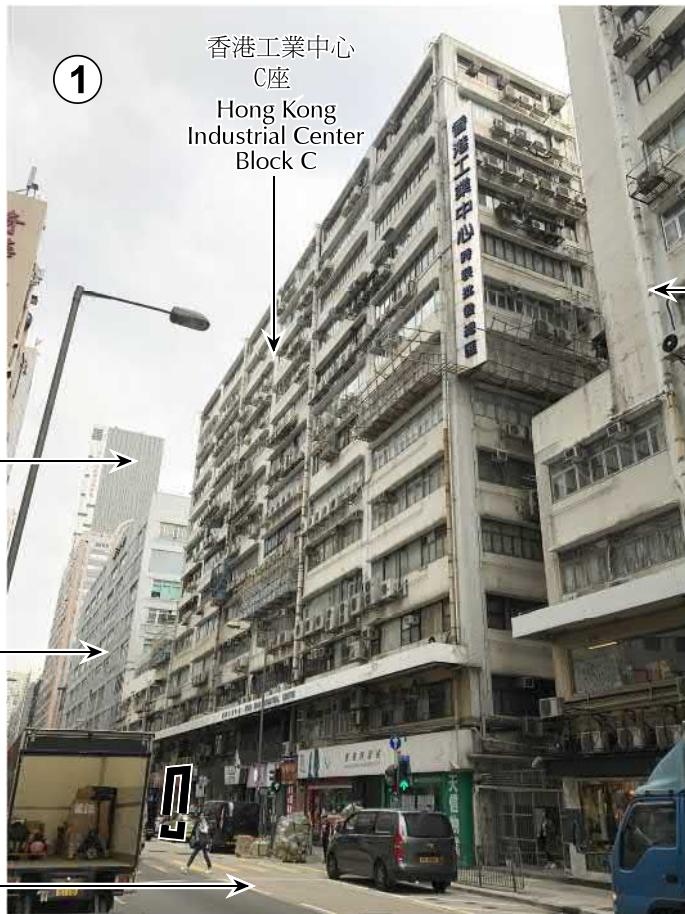
香港工業中心
C座
Hong Kong
Industrial Center
Block C

香港工業中心
B座
Hong Kong
Industrial Center
Block B

卓匯中心
Excel Centre

香港紗廠工業大廈
第一及二期
Hong Kong Spinners
Industrial Building
Phase I & II

青山道
CASTLE PEAK ROAD

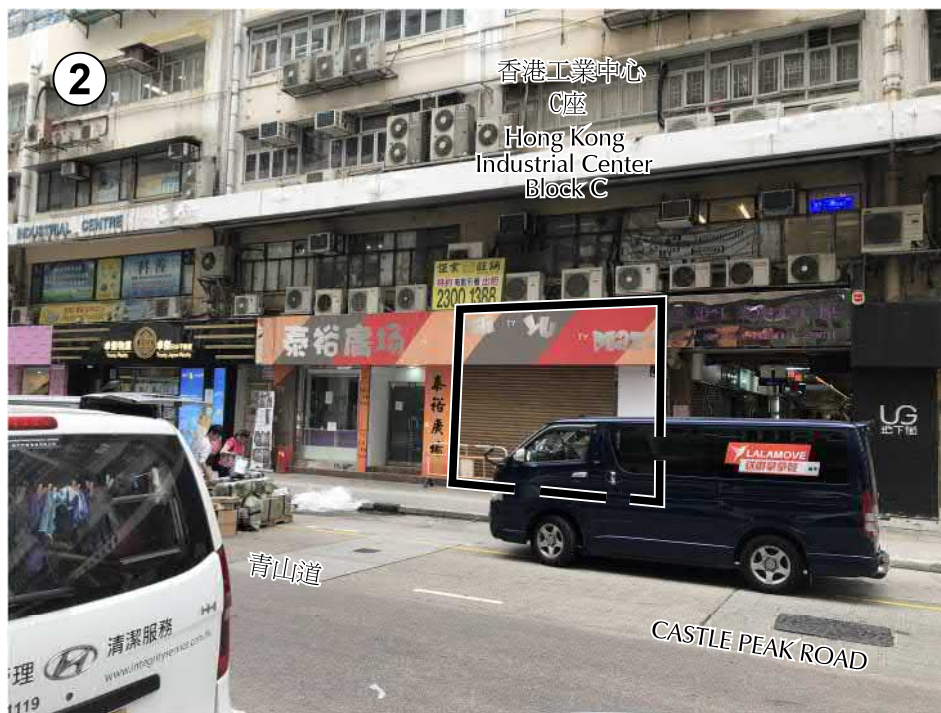


2

香港工業中心
C座
Hong Kong
Industrial Center
Block C

青山道

CASTLE PEAK ROAD



申請處所 (界線只作識別用)
APPLICATION PREMISES
(BOUNDARY FOR IDENTIFICATION
PURPOSE ONLY)

本圖於2019年7月29日擬備，所根據的
資料為攝於2019年4月2日的實地照片
PLAN PREPARED ON 29.7.2019
BASED ON SITE PHOTOS
TAKEN ON 2.4.2019

實地照片 SITE PHOTOS

擬議商店及服務行業
九龍青山道489-491號
香港工業中心C座地下C4工場(部分)
PROPOSED SHOP AND SERVICES
PORTION OF WORKSHOP C4, G/F, BLOCK C,
HONG KONG INDUSTRIAL CENTRE,
489-491 CASTLE PEAK ROAD, KOWLOON

規劃署
PLANNING
DEPARTMENT



參考編號
REFERENCE No.

A/K5/805

圖 PLAN

A-3