

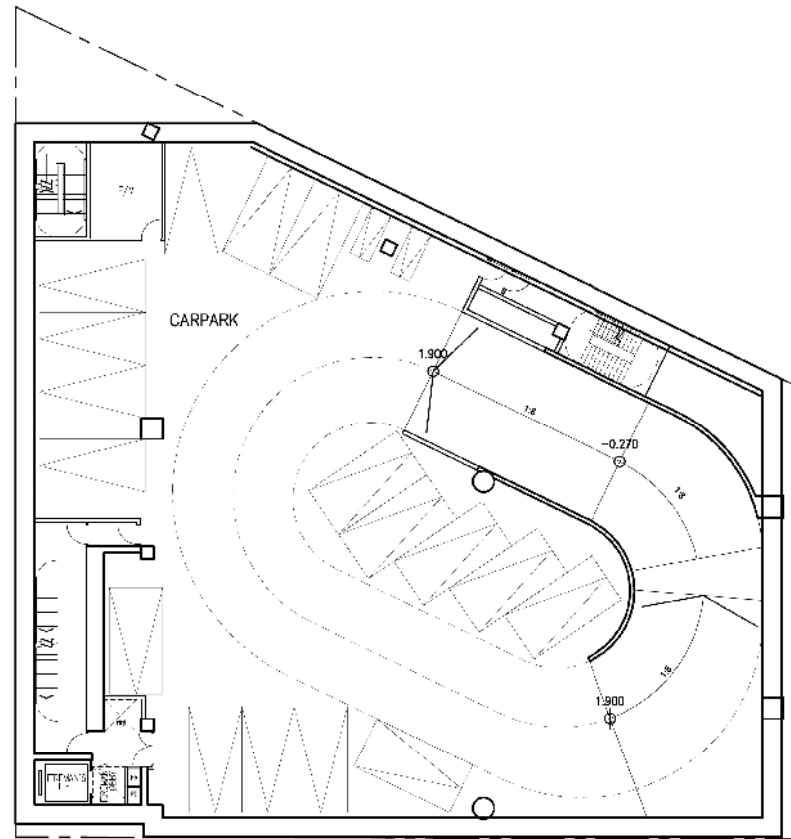
PARKING PROPOS. CH.
PRIVATE PARKING = 26

B3

12.23.24MARI18 LWM/ P6326 0.1RDA\2234\WORKING\DWG\20180322 TO KTA RTD05\2234 DOUBLE DECK

參考編號 REFERENCE No. A/K5/782	繪圖 DRAWING A-2
-----------------------------------	----------------------

(來源：附錄 Ij)
(Source : Appendix Ij)



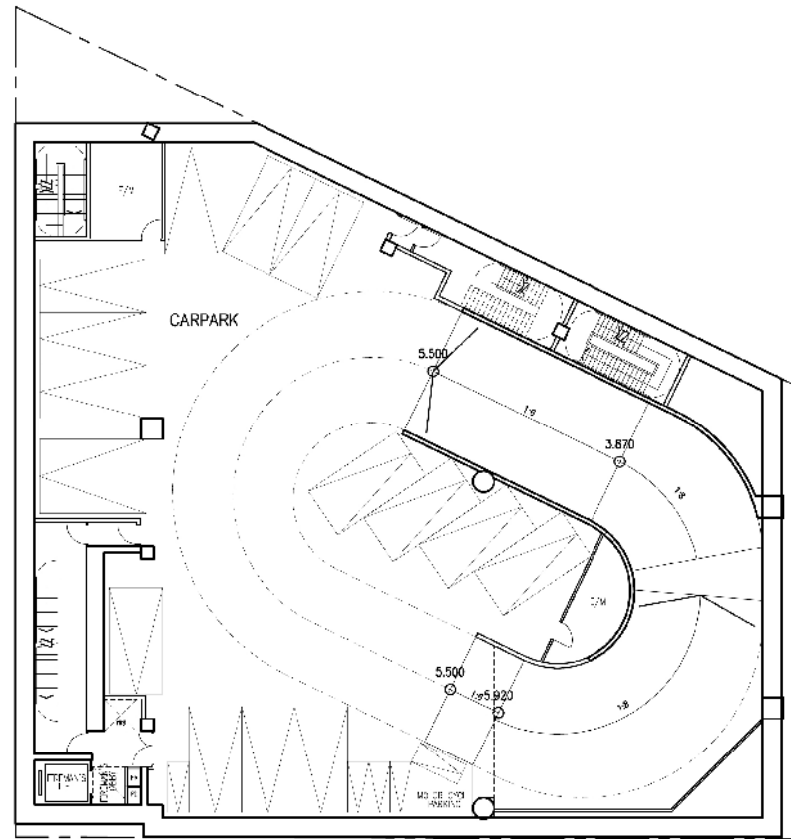
PARKING PROVISION:
PRIVATE PARKING = 17

I:\04\15\1504\2234\WORKING\DWG\20150117_10_KIAX\2234_DOUBLE_DECK.dwg

B2

參考編號 REFERENCE No. A/K5/782	繪圖 DRAWING A-3
--	-----------------------------

(來源：附錄 Ig)
(Source : Appendix Ig)



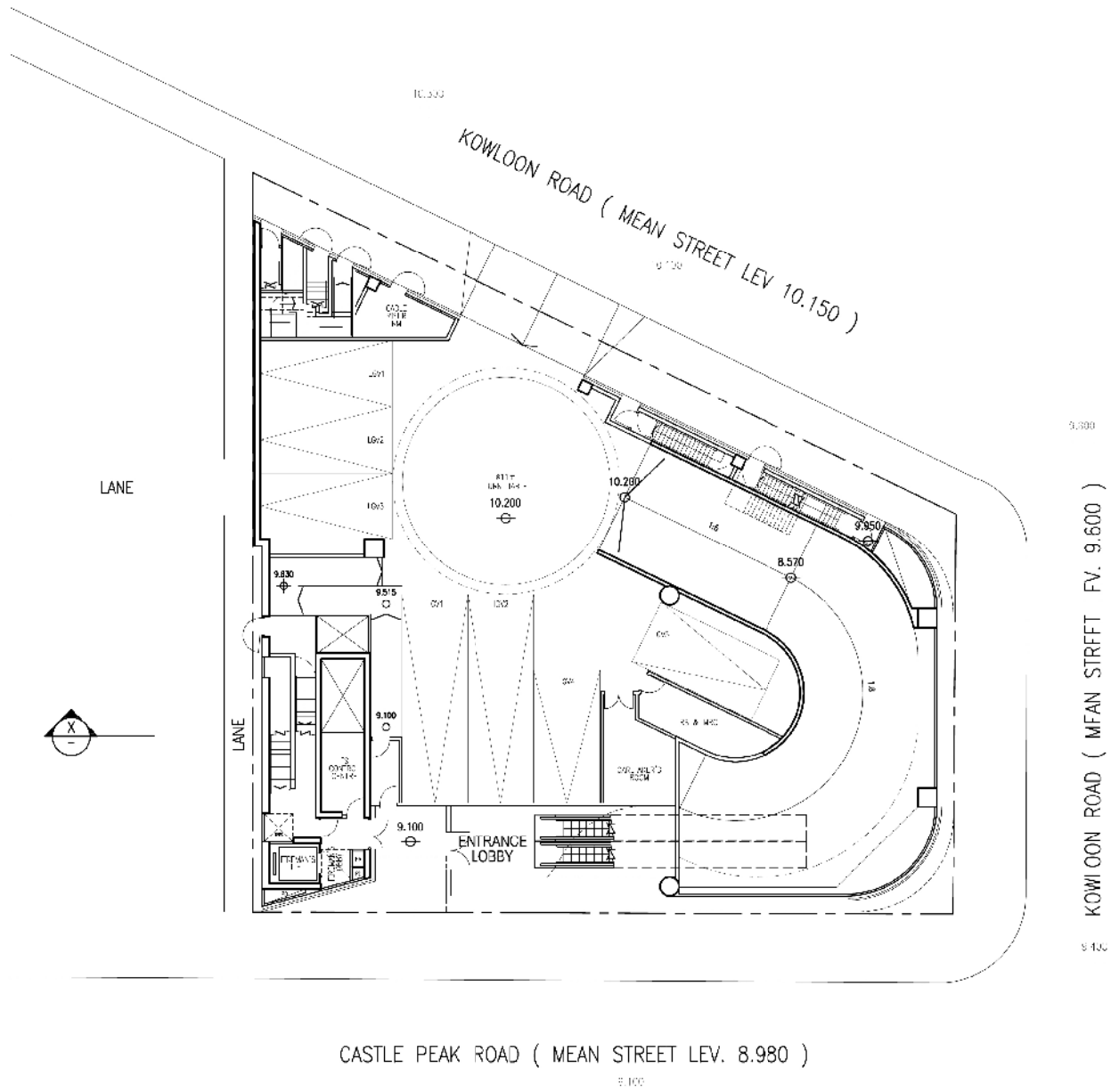
PARKING PROVISION:
PRIVATE PARKING = 15

B1

1:4.25 - E:\JH15 - LHM - P2306 - 8:\BDA\2234\WORKING\DWG\20180117 TO K1A\DRIFT 2\2234 GAR LIFT DOUBLE DECK FLEXIBILITY

參考編號 REFERENCE No. A/K5/782	繪圖 DRAWING A-4
-----------------------------------	----------------------

(來源：附錄 Ig)
(Source : Appendix Ig)

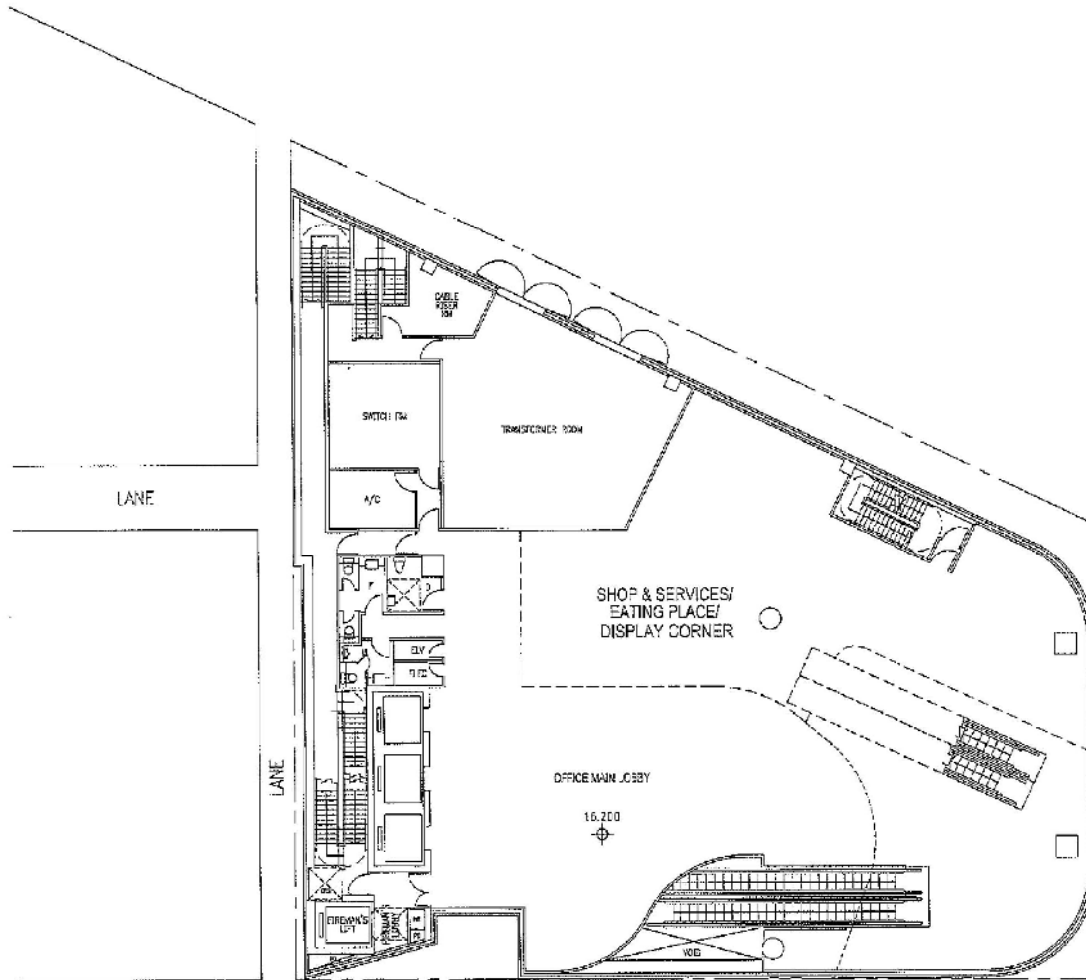


G/F

1:10 15/JAN/15 LHM P2306 8:\BOM\2234\WORKING\WP120150117 TO KIA\2234 DOUBLE DECK

參考編號 REFERENCE No. A/K5/782	繪圖 DRAWING A-5
--	-----------------------------

(來源：附錄 Ig)
 (Source : Appendix Ig)

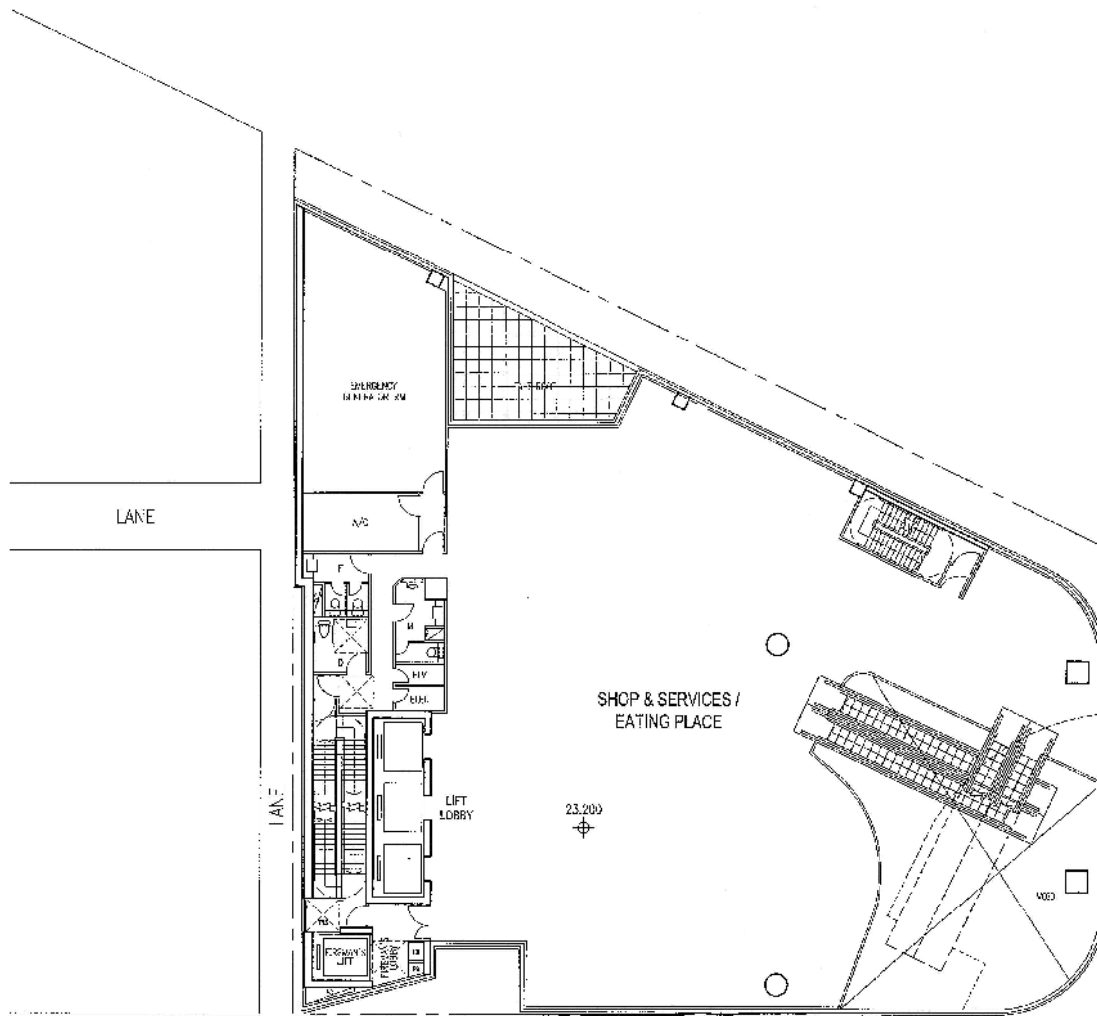


NOTE: THERE WILL BE DISPLAY CORNER (ABOUT 15 SQM.) OF LOCAL PRODUCTS AND PHOTO RECORDS OF THE BAKERY HISTORY OF THE GARDEN FOR PUBLIC VISIT AND APPRECIATION IN THE AREA OF PROPOSED SHOP & SERVICES / EATING PLACE.

1/F

參考編號 REFERENCE No. A/K5/782	繪圖 DRAWING A-6
-----------------------------------	----------------------

(來源：附錄 Ip)
(Source : Appendix Ip)

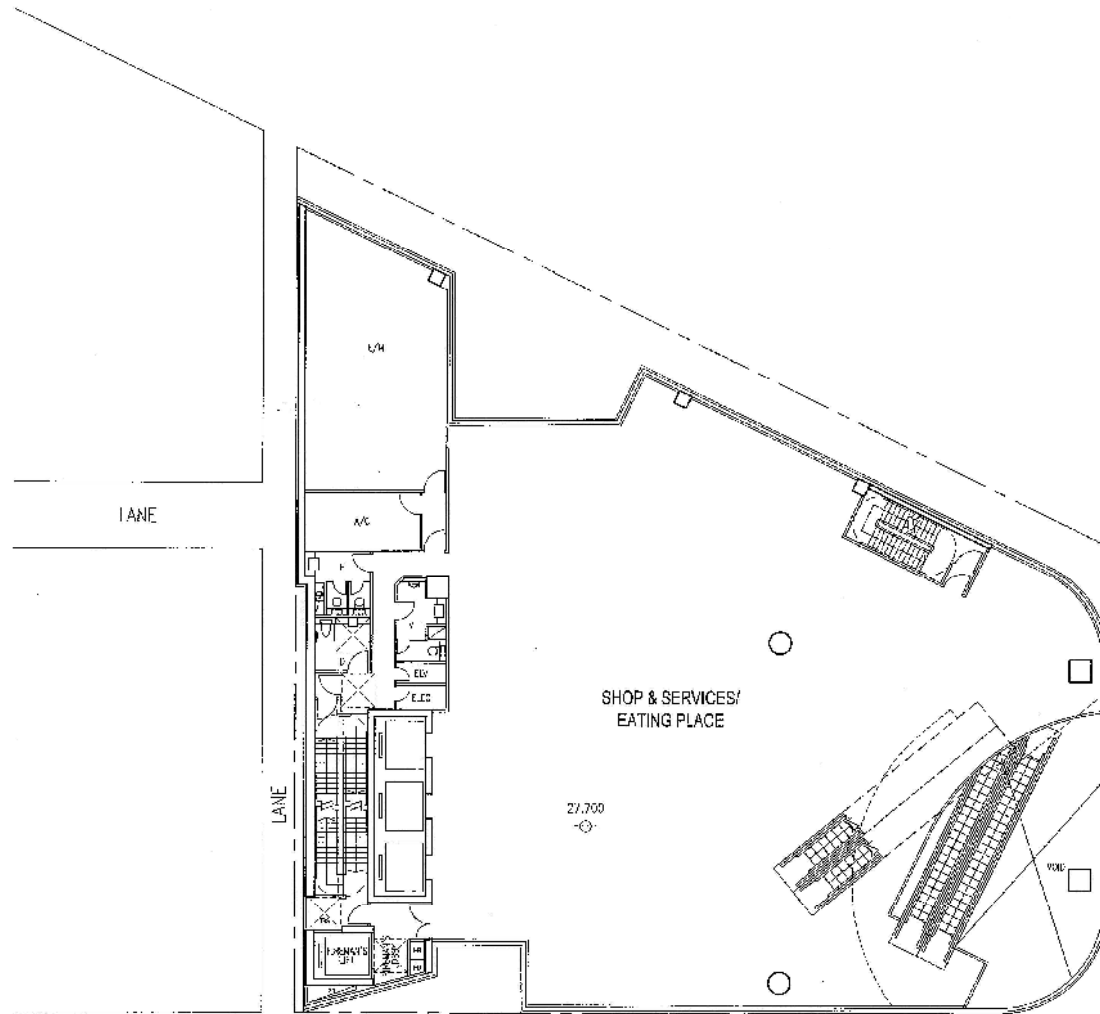


2/F

G:\WORK\2234\CAD\DESIGN\2234_P_PLANS_DESIGN PLAN
 4-2004

參考編號 REFERENCE No. A/K5/782	繪圖 DRAWING A-7
--	-----------------------------

(來源：附錄 Ia)
 (Source : Appendix Ia)

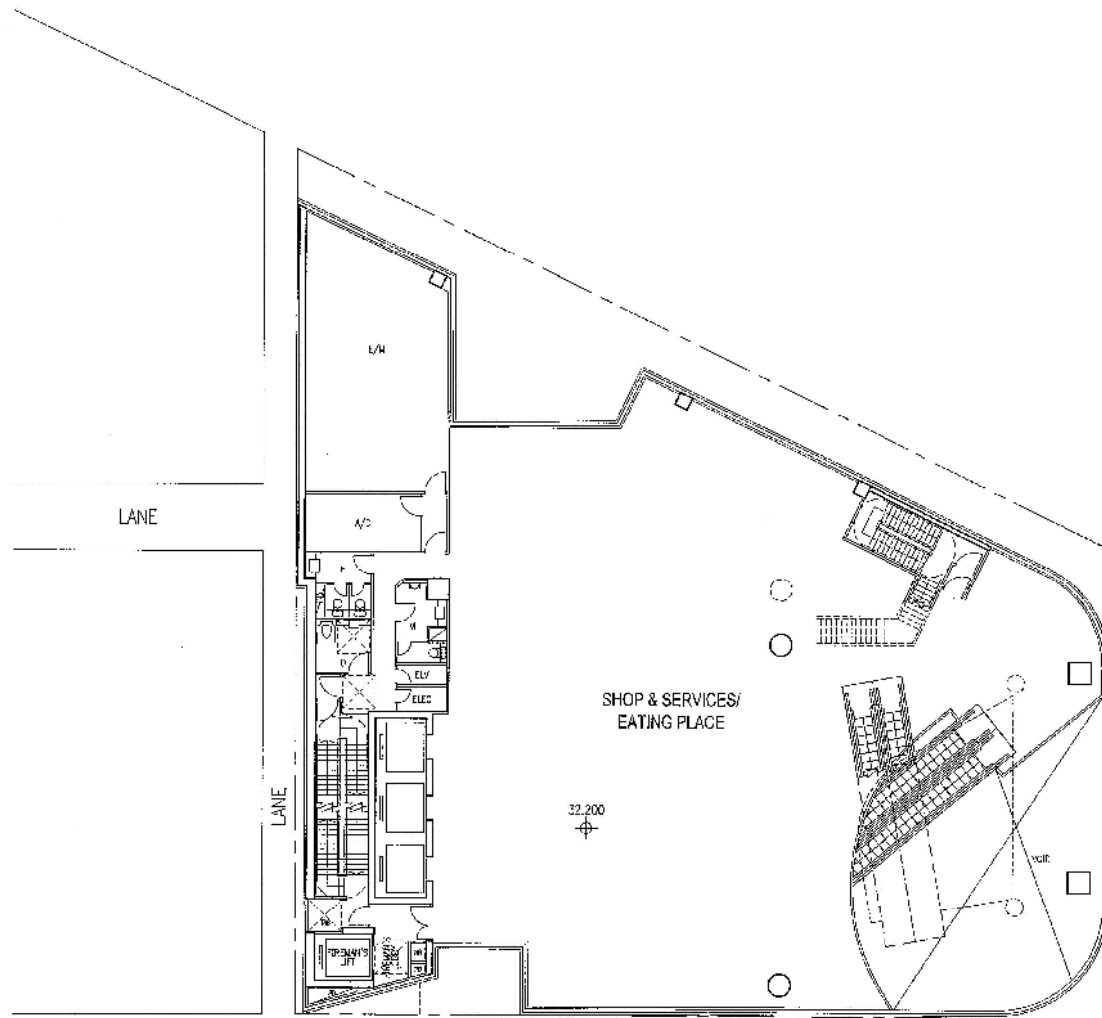


18-57 19KANT7 L10 DC566 0:\WORK\2234\000\DESIGN\2234_P_PLANS_DES\GV_PLN

3/F

參考編號 REFERENCE No. A/K5/782	繪圖 DRAWING A-8
--	-----------------------------

(來源：附錄 Ia)
 (Source : Appendix Ia)

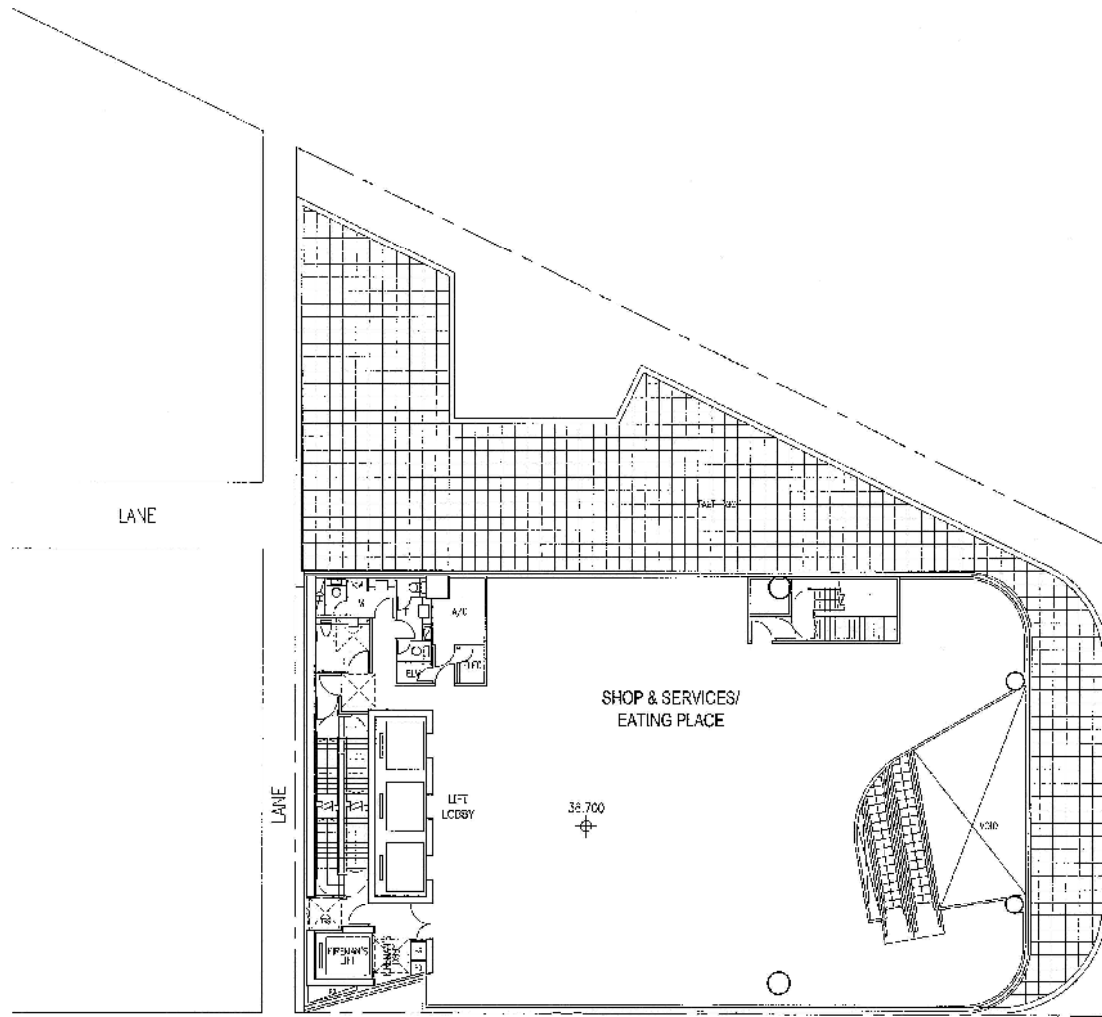


4/F

13.58 19MAY17 LY0 PC366 B:\PDA\2221\CAD\DESIGN\2234_R_PLANS_0616M.PLM

參考編號 REFERENCE No. A/K5/782	繪圖 DRAWING A-9
--	-----------------------------

(來源：附錄 Ia)
 (Source : Appendix Ia)

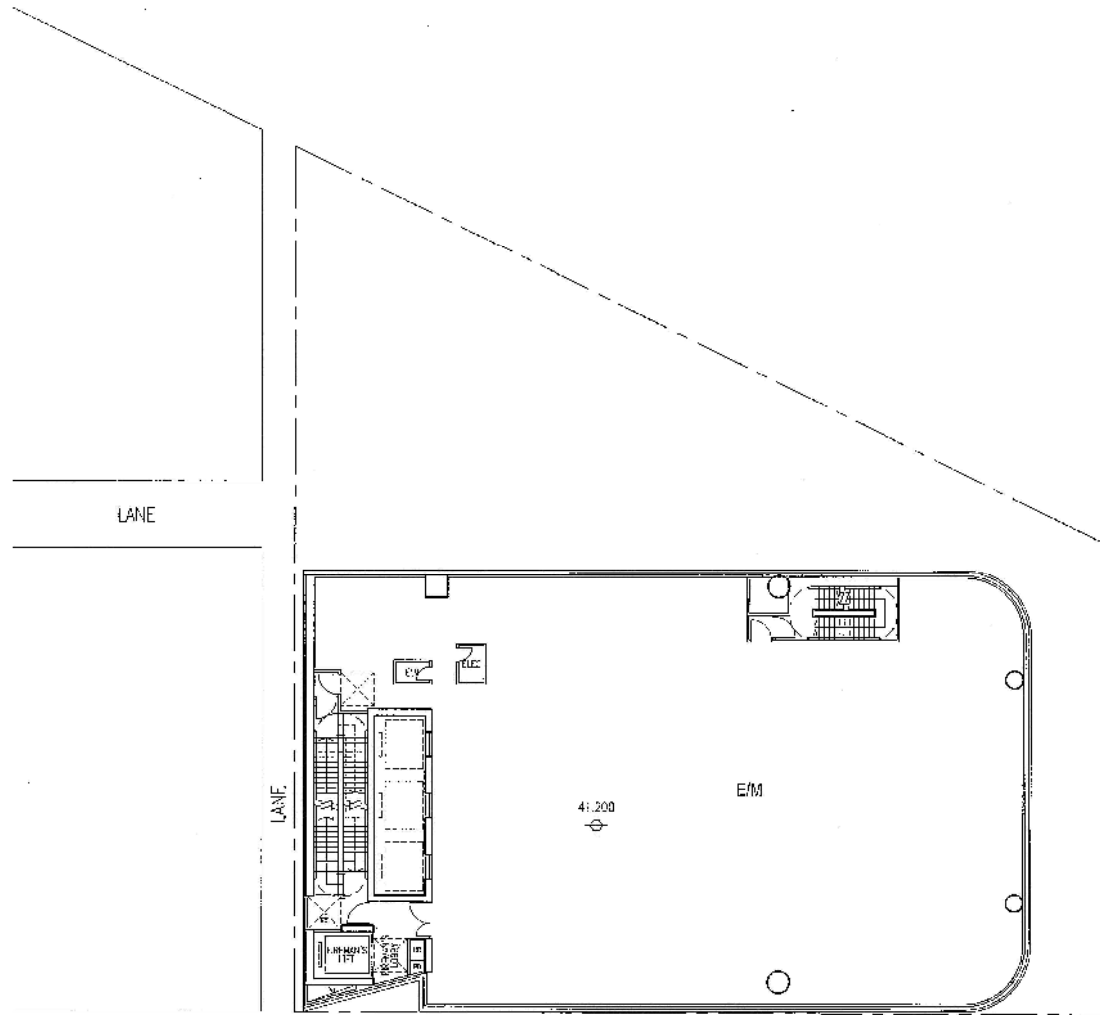


18-03 19MAY 7 LYO P0266 0-1/00A/2024/CAD/DESIGN/223/ R_PLANS_355 ION PLAN

5/F

參考編號 REFERENCE No. A/K5/782	繪圖 DRAWING A-10
--	------------------------------

(來源：附錄 Ia)
 (Source : Appendix Ia)

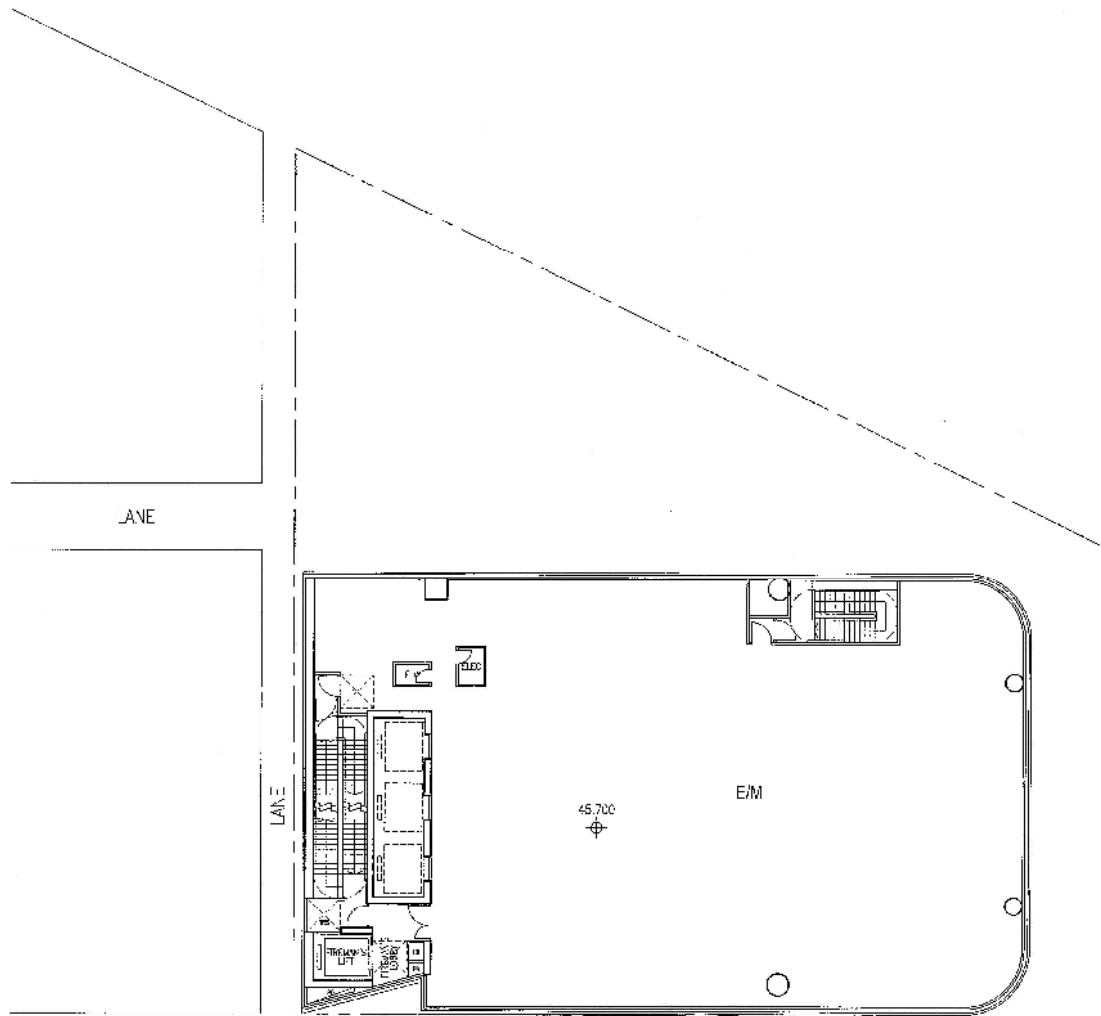


18-55 19KXNT17 LYD P0366 C:\BDA\2234\060\065\09\2234_U_PLANS_DUS\18V PLAN
 4-2004

6/F

參考編號 REFERENCE No. A/K5/782	繪圖 DRAWING A-11
--	------------------------------

(來源：附錄 Ia)
 (Source : Appendix Ia)

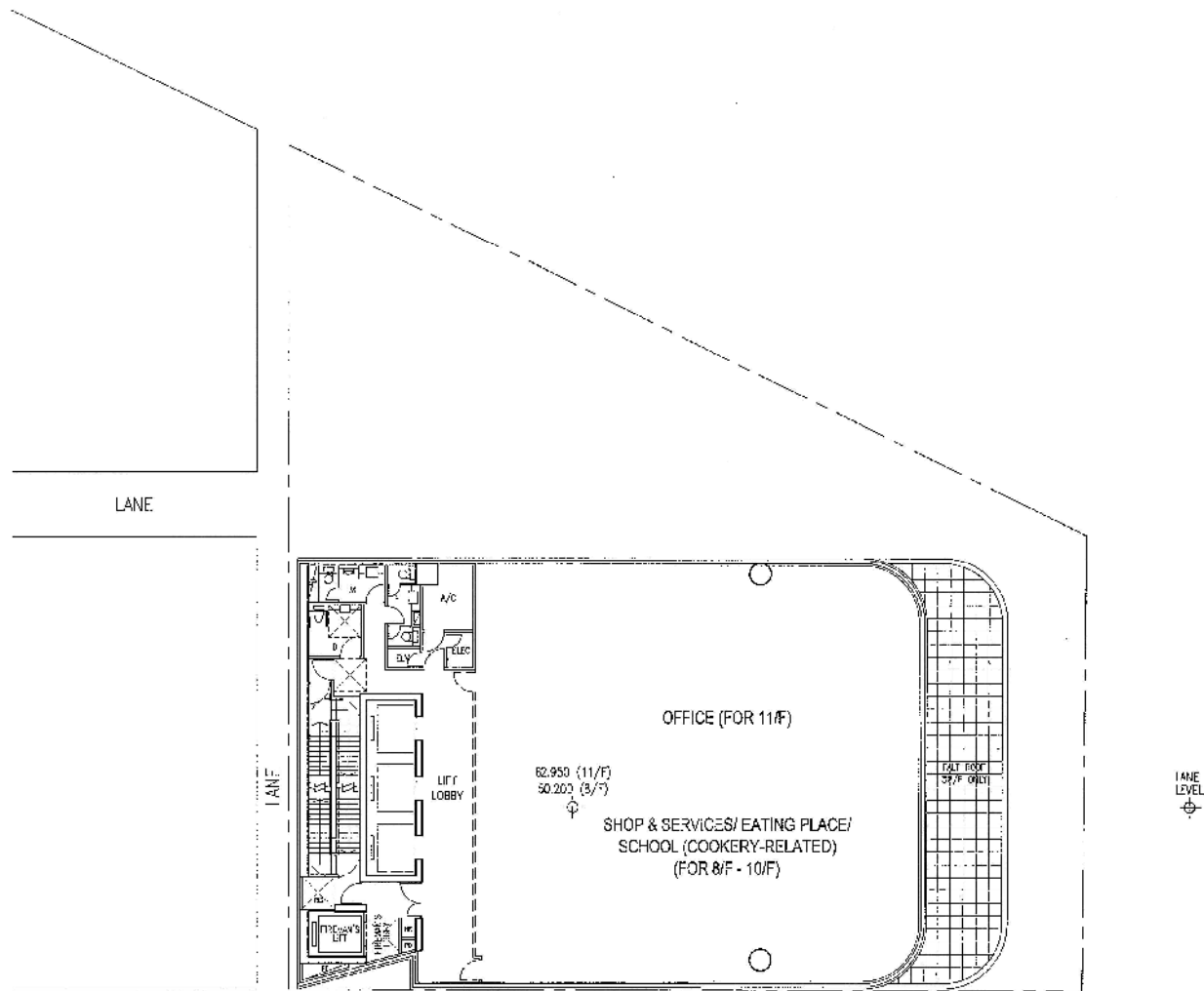


7/F

18-89-19MAY-7 LYO P2506 0:10DA\22284\LAB\035 IRI\2254_D1 AHS_DP15 I08 FI AH

參考編號 REFERENCE No.	繪圖 DRAWING
A/K5/782	A-12

(來源：附錄 Ia)
(Source : Appendix Ia)

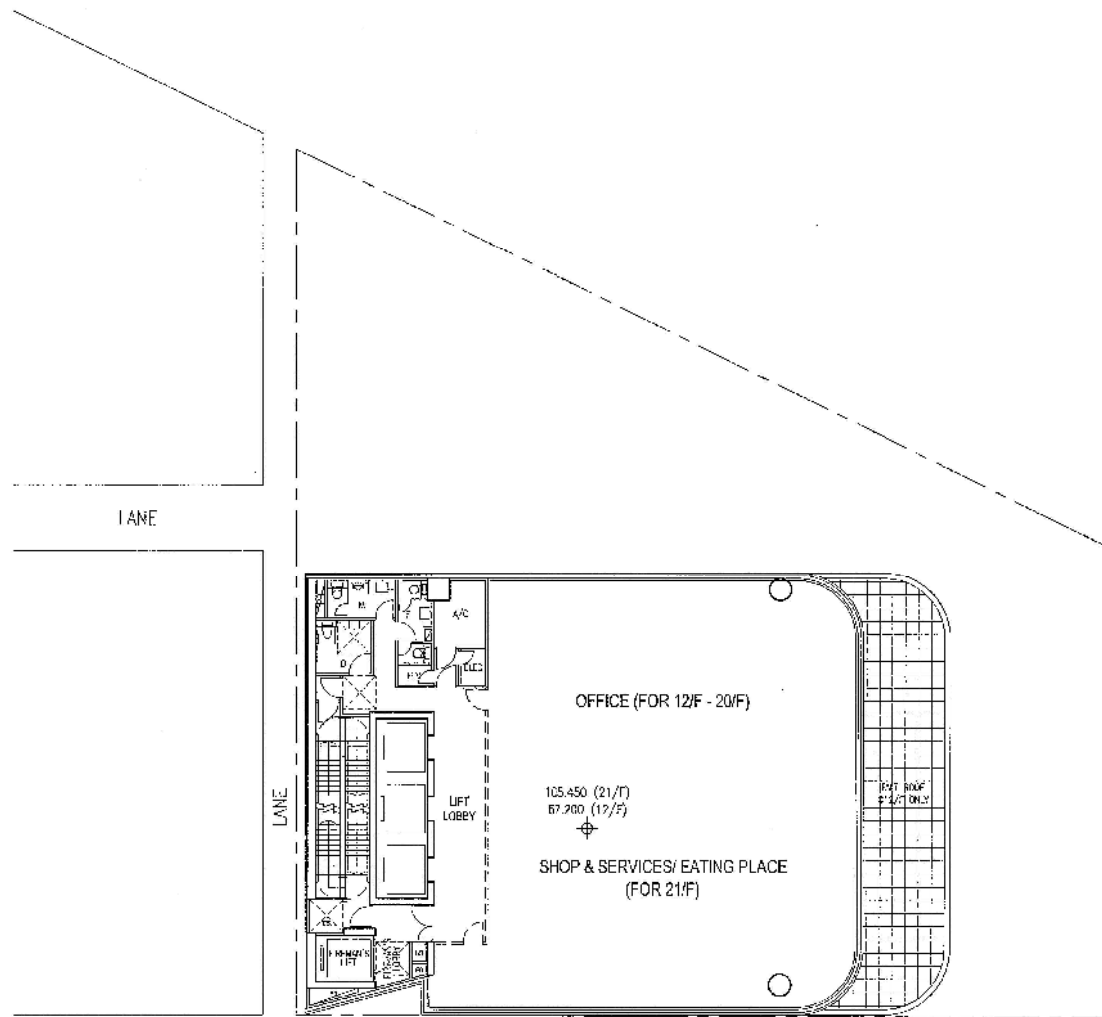


19.00 15/04/17 L10 PC366 6: \\VDA\2234\CAD\DESIGN\2234_8_PLANS_DES FOR PLJ41

8/F-11/F

參考編號 REFERENCE No. A/K5/782	繪圖 DRAWING A-13
--	------------------------------

(來源：附錄 Ia)
 (Source : Appendix Ia)

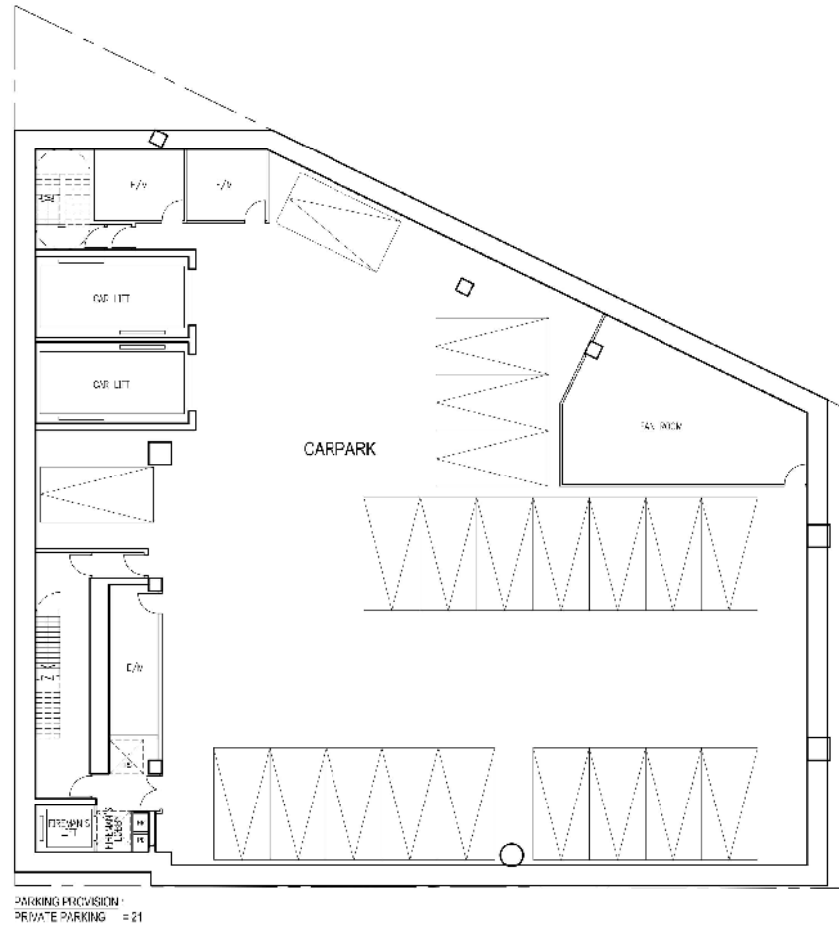


19-00-1788/177 LXC 70866 0:1324,2234,040,001,010A\2254_R_PUMS_DESIGN_PLAN
 14-04-04

12/F-21/F

參考編號 REFERENCE No. A/K5/782	繪圖 DRAWING A-14
--	------------------------------

(來源：附錄 Ia)
 (Source : Appendix Ia)

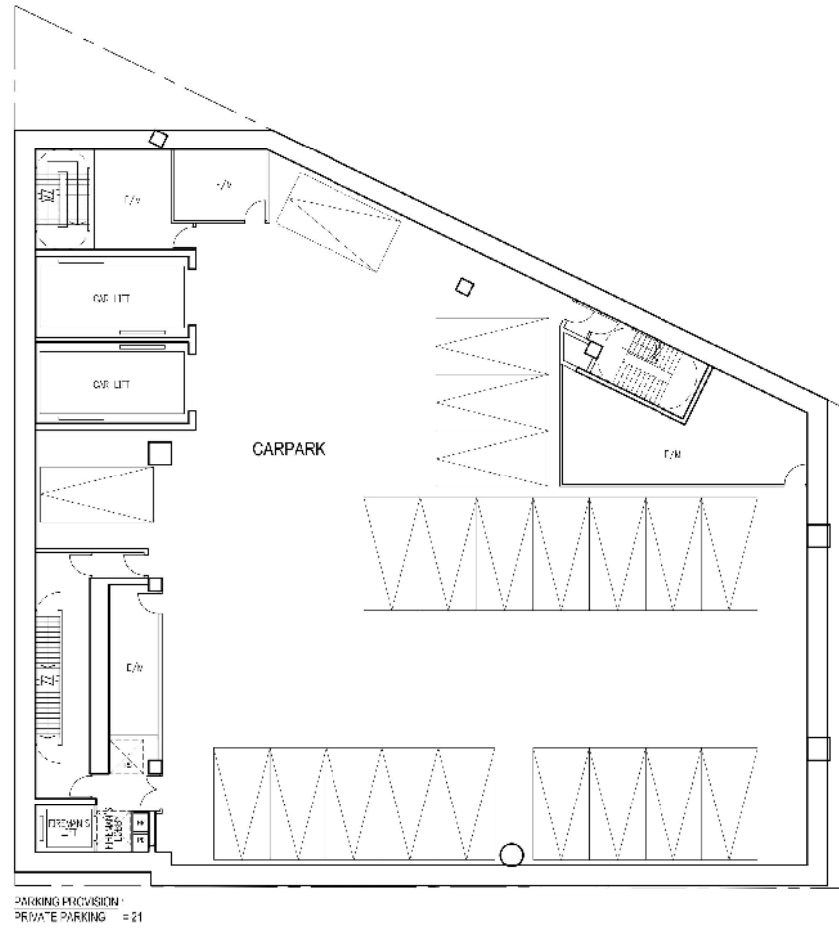


B3

1:43 11 SEP 18 TL PC390 6_1\POA\2234\WORK\NS\LMN\20180905_SETBACK-CAR_RAMP-CAR_LIFT\2234_CAR_LIFT_OPTION_A

參考編號 REFERENCE No. A/K5/782	繪圖 DRAWING A-15
-----------------------------------	-----------------------

(來源：附錄 Io)
(Source : Appendix Io)

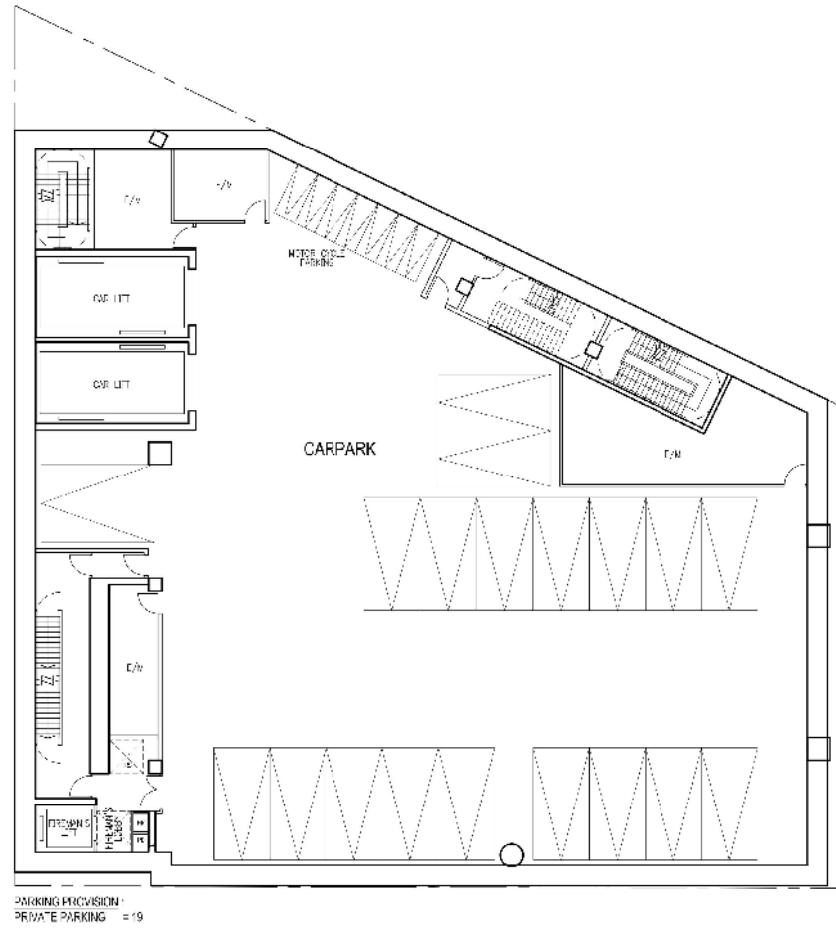


B2

1:44 11 SEP 18 TL PC390 6_1_PDA\2234\WORK\NS\LMN\20180905_SETBACK-CAR_RAMP-CAR_LIFT\2234_CAR_LIFT_OPTION_A

參考編號 REFERENCE No. A/K5/782	繪圖 DRAWING A-16
-----------------------------------	-----------------------

(來源：附錄 Io)
(Source : Appendix Io)

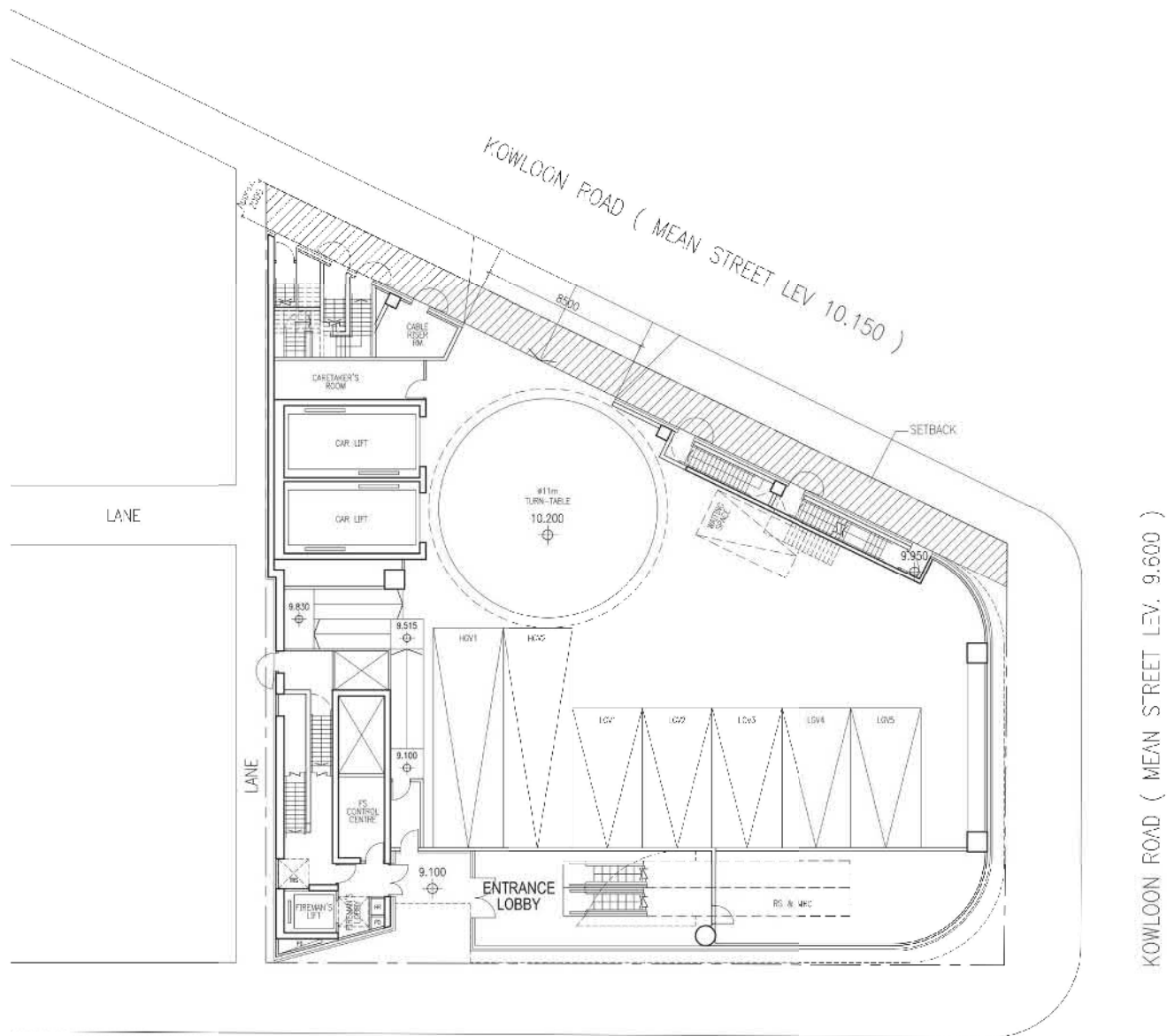


B1

1:44 11 SEP 18 TL PC390 6_1_PDA\2234\WORK\NS\LMN\20180905_SETBACK-CAR_RAMP-CAR_LIFT\2234_CAR_LIFT_OPTION_A

參考編號 REFERENCE No. A/K5/782	繪圖 DRAWING A-17
-----------------------------------	-----------------------

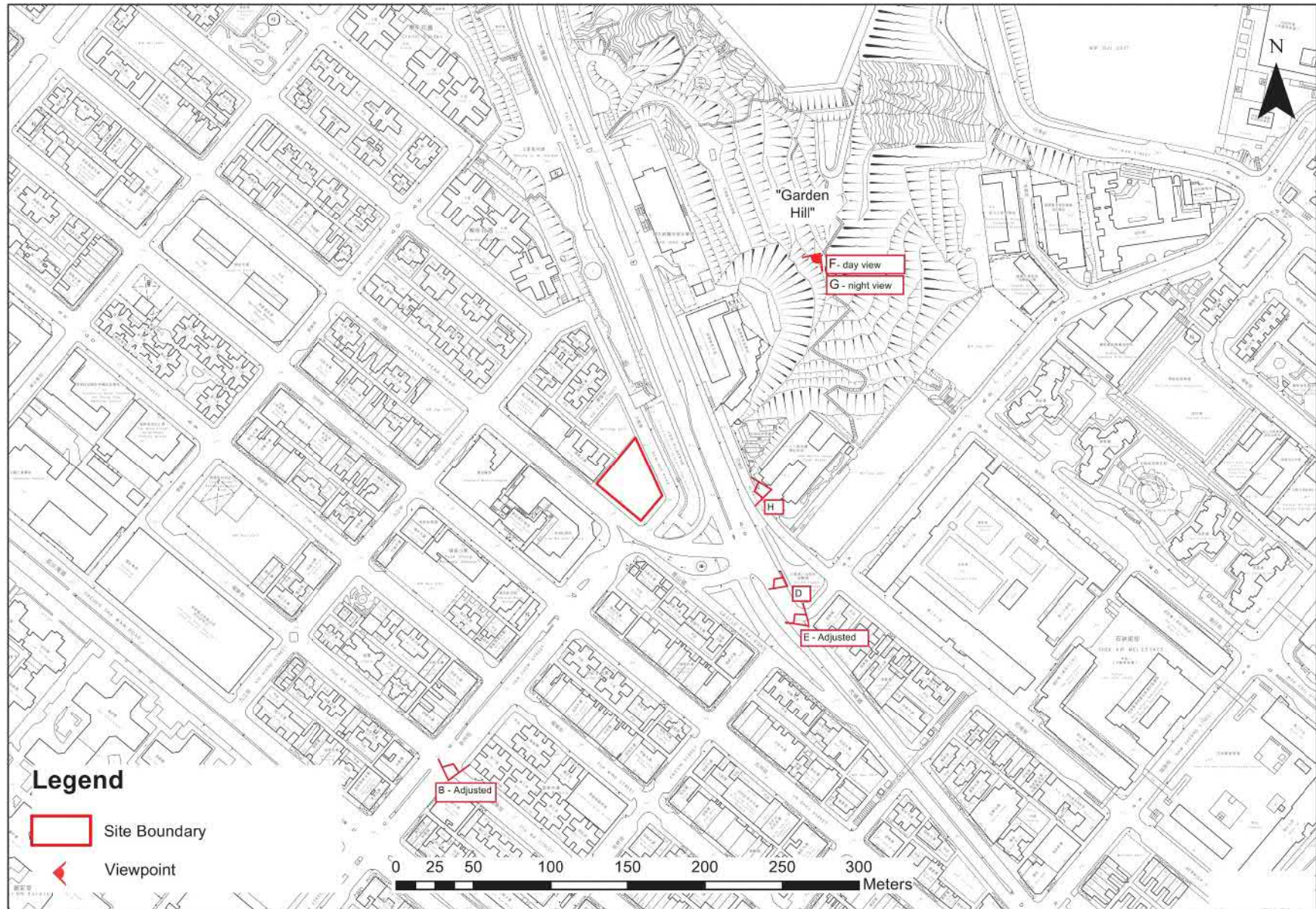
(來源：附錄 Io)
(Source : Appendix Io)



G/F

參考編號 REFERENCE No. A/K5/782	繪圖 DRAWING A-18
-----------------------------------	-----------------------

(來源 : 附錄 Io)
(Source : Appendix Io)



參考編號 REFERENCE No.	繪圖 DRAWING
A/K5/782	A-19

(來源：附錄 Ih)
(Source : Appendix Ih)

Viewpoint B from Yen Chow Street



B1: Proposed Development Scheme



B2: Hypothetical Scheme

參考編號 REFERENCE No. A/K5/782	繪圖 DRAWING A-20
-----------------------------------	-----------------------

(來源：附錄 Ih)
(Source : Appendix Ih)

Viewpoint D from Tai Po Road/Pak Tin Street Playground



D1: Proposed Development Scheme



D2: Hypothetical Scheme

參考編號 REFERENCE No. A/K5/782	繪圖 DRAWING A-21
-----------------------------------	-----------------------

(來源：附錄 Ih)
(Source : Appendix Ih)

Viewpoint E from Tai Po Road



E1: Proposed Development Scheme



E2: Hypothetical Scheme

參考編號 REFERENCE No. A/K5/782	繪圖 DRAWING A-22
-----------------------------------	-----------------------

(來源：附錄 Ih)
(Source : Appendix Ih)

Viewpoint F (Day View) from "Garden Hill"



F1: Proposed Development Scheme



F2: Hypothetical Scheme

參考編號 REFERENCE No. A/K5/782	繪圖 DRAWING A-23
-----------------------------------	-----------------------

(來源：附錄 Ih)
(Source : Appendix Ih)

Viewpoint G (Night View) from "Garden Hill"



G1: Proposed Development Scheme



G2: Hypothetical Scheme

參考編號 REFERENCE No. A/K5/782	繪圖 DRAWING A-24
-----------------------------------	-----------------------

(來源：附錄 Ih)
(Source : Appendix Ih)

Viewpoint H from YHA Mei Ho House Youth Hostel



H1: Proposed Development Scheme



H2: Hypothetical Scheme

參考編號 REFERENCE No. A/K5/782	繪圖 DRAWING A-25
-----------------------------------	-----------------------

(來源：附錄 I_h)
(Source : Appendix I_h)

Additional Indicative Images showing Preliminary Façade Design:



Viewpoint B – from the southwest, Yen Chow Street



Viewpoint H – from the southeast, Mei Ho House

參考編號 REFERENCE No. A/K5/782	繪圖 DRAWING A-26
-----------------------------------	-----------------------

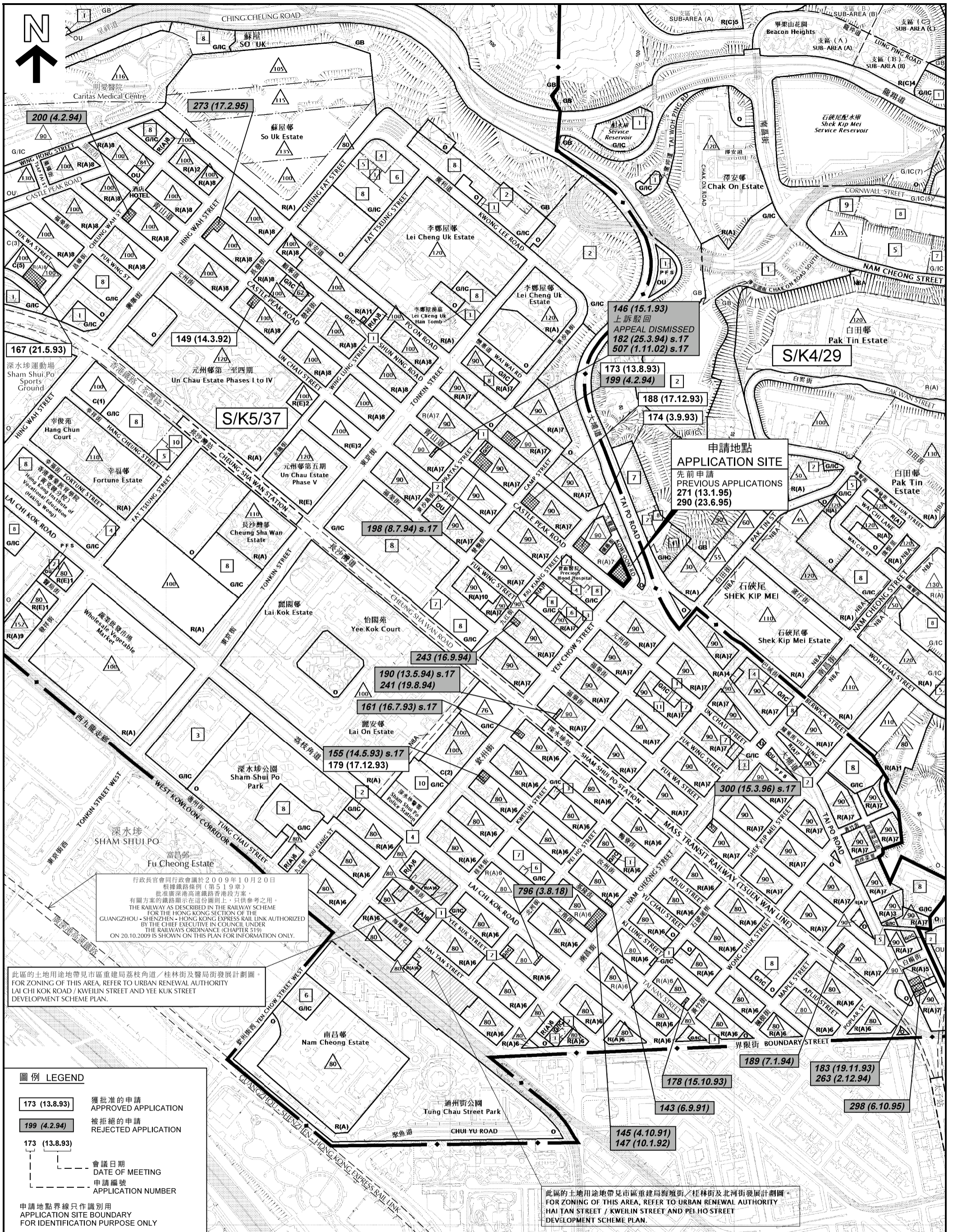
(來源：附錄 In)
(Source : Appendix In)



Viewpoint G – night view from the northeast, Hill of Garden

參考編號 REFERENCE No. A/K5/782	繪圖 DRAWING A-27
-----------------------------------	-----------------------

(來源：附錄 In)
(Source : Appendix In)



行政長官會同行政會議於2009年10月20日根據鐵路條例(第519章)批准廣深港高鐵路香港段方案。有關方案的鐵路顯示在附圖上，以供參考之用。THE RAILWAY AS DESCRIBED IN THE RAILWAY SCHEME FOR THE HONG KONG SECTION OF THE GUANGZHOU - SHENZHEN - HONG KONG EXPRESS RAIL LINK AUTHORIZED BY THE CHIEF EXECUTIVE IN COUNCIL UNDER THE RAILWAYS ORDINANCE (CHAPTER 319) ON 20.10.2009 IS SHOWN ON THIS PLAN FOR INFORMATION ONLY.

此區的土地用途地帶見市區重建局荔枝角道/桂林街及醫局街發展計劃圖。FOR ZONING OF THIS AREA, REFER TO URBAN RENEWAL AUTHORITY LAI CHI KOK ROAD / KWELIN STREET AND YEE KUK STREET DEVELOPMENT SCHEME PLAN.

此區的土地用途地帶見市區重建局海濱街/桂林街及北河街發展計劃圖。FOR ZONING OF THIS AREA, REFER TO URBAN RENEWAL AUTHORITY HAI TAN STREET / KWELIN STREET AND PEI HO STREET DEVELOPMENT SCHEME PLAN.

圖例 LEGEND

- 173 (13.8.93) 獲批准的申請 APPROVED APPLICATION
- 199 (4.2.94) 被拒絕的申請 REJECTED APPLICATION
- 173 (13.8.93) 會議日期 DATE OF MEETING
- 173 (13.8.93) 申請編號 APPLICATION NUMBER

申請地點界線只作識別用
APPLICATION SITE BOUNDARY FOR IDENTIFICATION PURPOSE ONLY

本摘要圖於2018年8月16日備備，所根據的資料為於2015年7月21日核准的分區計劃大綱圖編號S/K4/29和於2016年12月6日核准的分區計劃大綱圖編號S/K5/37
EXTRACT PLAN PREPARED ON 16.8.2018 BASED ON OUTLINE ZONING PLANS No. S/K4/29 APPROVED ON 21.7.2015 AND S/K5/37 APPROVED ON 6.12.2016

位置圖 LOCATION PLAN

擬議商店及服務行業、食肆、辦公室及學校(與烹飪有關)
九龍青山道58號
PROPOSED SHOP AND SERVICES, EATING PLACE, OFFICE AND SCHOOL (COOKERY-RELATED)
58 CASTLE PEAK ROAD, KOWLOON

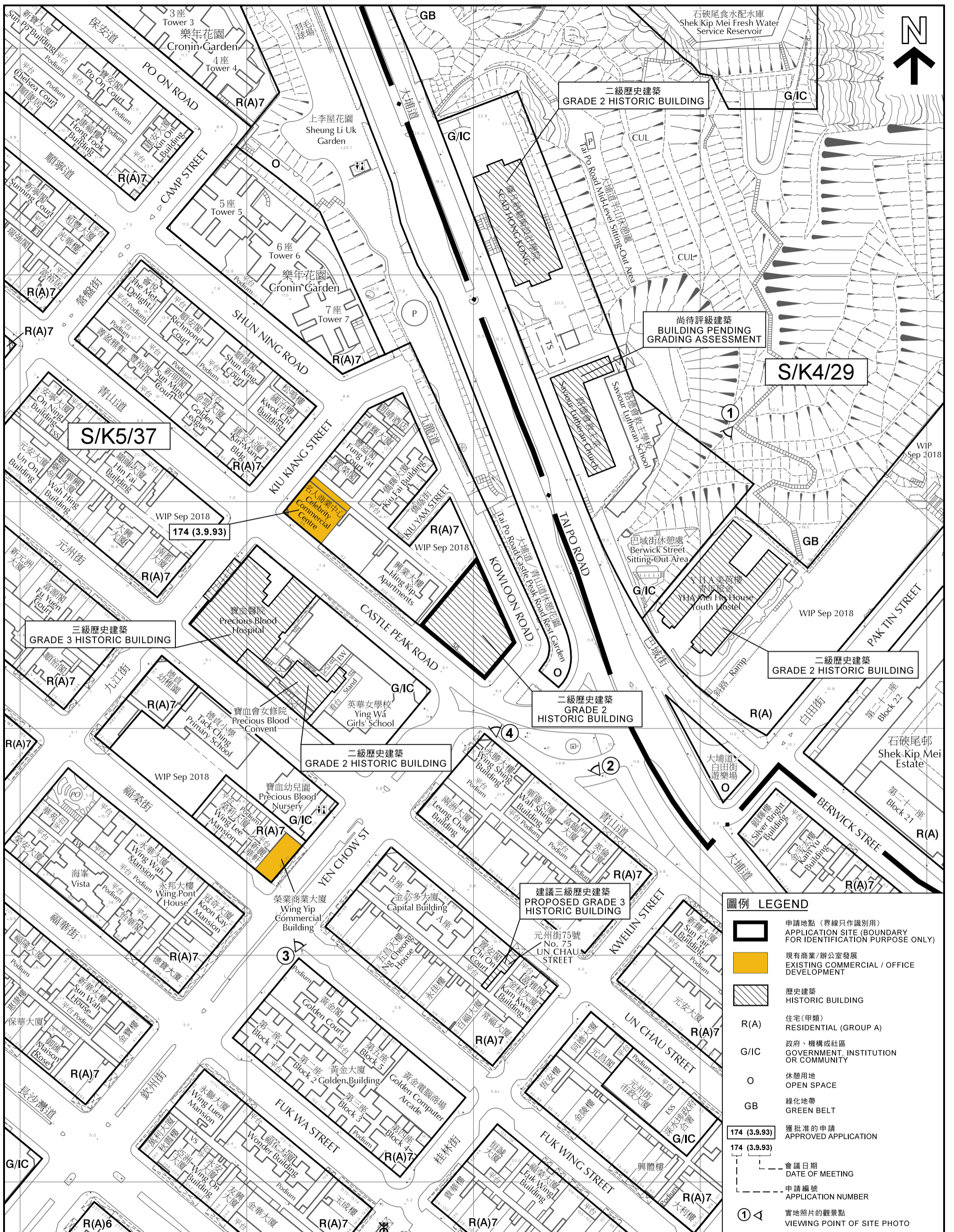
SCALE 1:6 000 比例尺

米 METRES 100 0 100 200 300 400 500 METRES

規劃署 PLANNING DEPARTMENT

參考編號 REFERENCE No. A/K5/782

圖 PLAN A-1



平面圖 SITE PLAN

擬議商店及服務行業、食肆、辦公室及學校（與烹飪有關）
九龍青山道58號

PROPOSED SHOP AND SERVICES, EATING PLACE, OFFICE AND SCHOOL (COOKERY-RELATED)
58 CASTLE PEAK ROAD, KOWLOON

SCALE 1 : 1 500 比例尺

METRES 20 0 20 40 60 80 100 120 METRES

本摘要圖於2018年9月13日擬備，
所根據的資料為測量圖編號
11-NW-9C和11-NW-14A

EXTRACT PLAN PREPARED ON 13.9.2018
BASED ON SURVEY SHEETS No.
11-NW-9C AND 11-NW-14A

規劃署

PLANNING DEPARTMENT

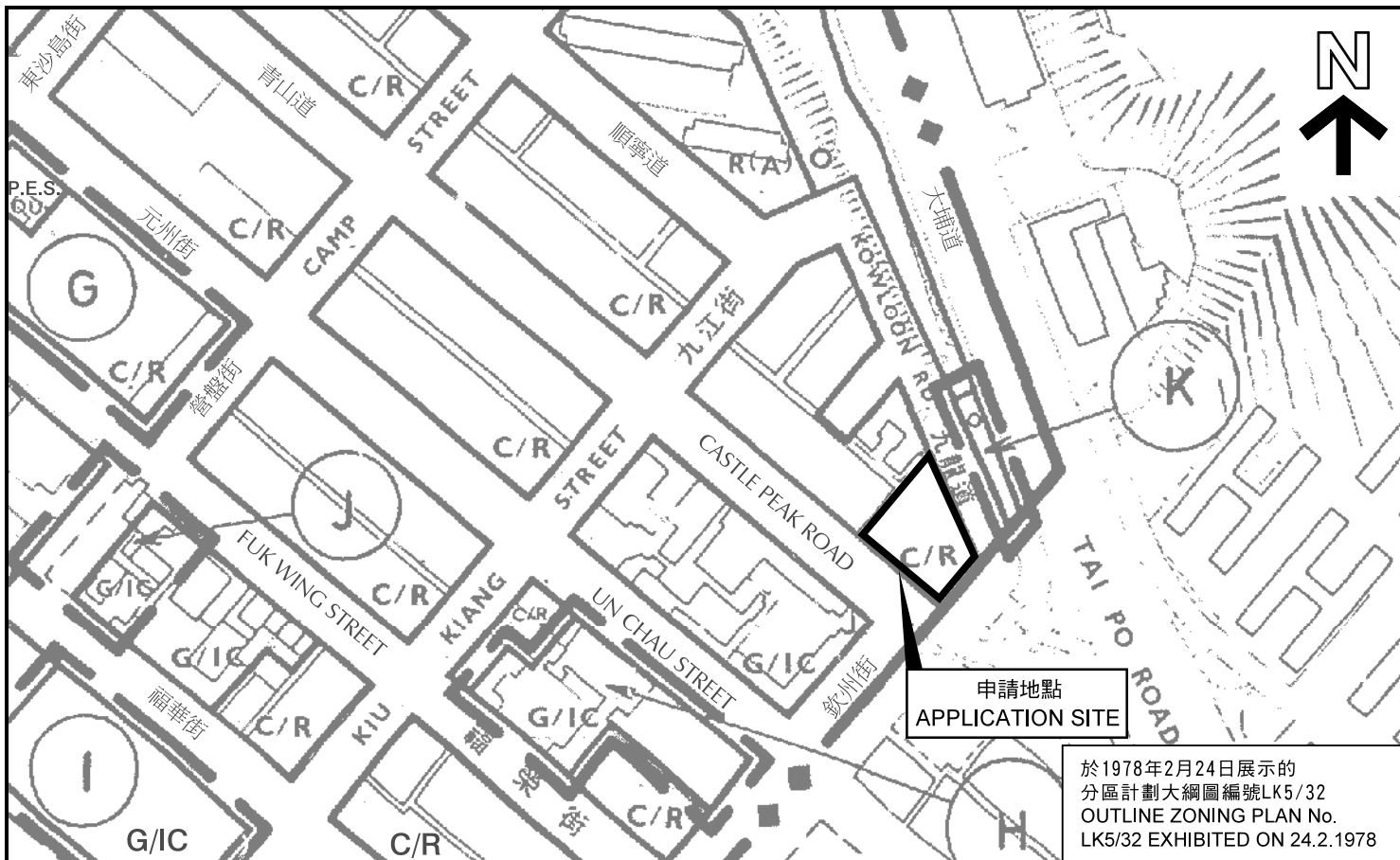


參考編號
REFERENCE No.

A/K5/782

圖 PLAN

A-2



本摘要圖於2018年9月14日擬備，所根據的資料為於1978年2月24日展示的分區計劃大綱圖編號LK5/32和於1981年3月6日展示的分區計劃大綱圖編號LK5/32C
EXTRACT PLAN PREPARED ON 14.9.2018 BASED ON OUTLINE ZONING PLANS No. LK5/32 EXHIBITED ON 24.2.1978 AND LK5/32C EXHIBITED ON 6.3.1981

位置圖 LOCATION PLAN

擬議商店及服務行業、食肆、辦公室及學校（與烹飪有關）
九龍青山道58號

PROPOSED SHOP AND SERVICES, EATING PLACE, OFFICE AND SCHOOL (COOKERY-RELATED)
58 CASTLE PEAK ROAD, KOWLOON

SCALE 1:2 500 比例尺

米 50 0 50 100 米
METRES

規劃署
PLANNING
DEPARTMENT



參考編號
REFERENCE No.
A/K5/782

圖 PLAN
A-3

1



英華女學校
Ying Wa Girls' School

路德會救主堂
Saviour Lutheran Church



青山道
CASTLE PEAK ROAD

申請地點 (界線只作識別用)
APPLICATION SITE
(BOUNDARY FOR IDENTIFICATION
PURPOSE ONLY)

本圖於2018年9月14日擬備，所根據的資料為攝於2018年9月3日及2018年5月16日的實地照片
PLAN PREPARED ON 14.9.2018
BASED ON SITE PHOTOS
TAKEN ON 3.9.2018 AND 16.5.2018

實地照片 SITE PHOTOS

擬議商店及服務行業、食肆、辦公室及學校 (與烹飪有關)
九龍青山道58號

PROPOSED SHOP AND SERVICES, EATING PLACE, OFFICE AND SCHOOL (COOKERY-RELATED)
58 CASTLE PEAK ROAD, KOWLOON

規劃署
PLANNING
DEPARTMENT



參考編號
REFERENCE No.

A/K5/782

圖 PLAN

A-4



 申請地點 (界線只作識別用)
APPLICATION SITE
(BOUNDARY FOR IDENTIFICATION
PURPOSE ONLY)

本圖於2018年9月14日擬備，所根據的資料為攝於2018年5月16日及2018年4月13日的實地照片
PLAN PREPARED ON 14.9.2018
BASED ON SITE PHOTOS
TAKEN ON 16.5.2018 AND 13.4.2018

實地照片 SITE PHOTOS

擬議商店及服務行業、食肆、辦公室及學校 (與烹飪有關)
九龍青山道58號

PROPOSED SHOP AND SERVICES, EATING PLACE, OFFICE AND SCHOOL (COOKERY-RELATED)
58 CASTLE PEAK ROAD, KOWLOON

規劃署
PLANNING
DEPARTMENT



參考編號
REFERENCE No.
A/K5/782

圖 PLAN
A-5