

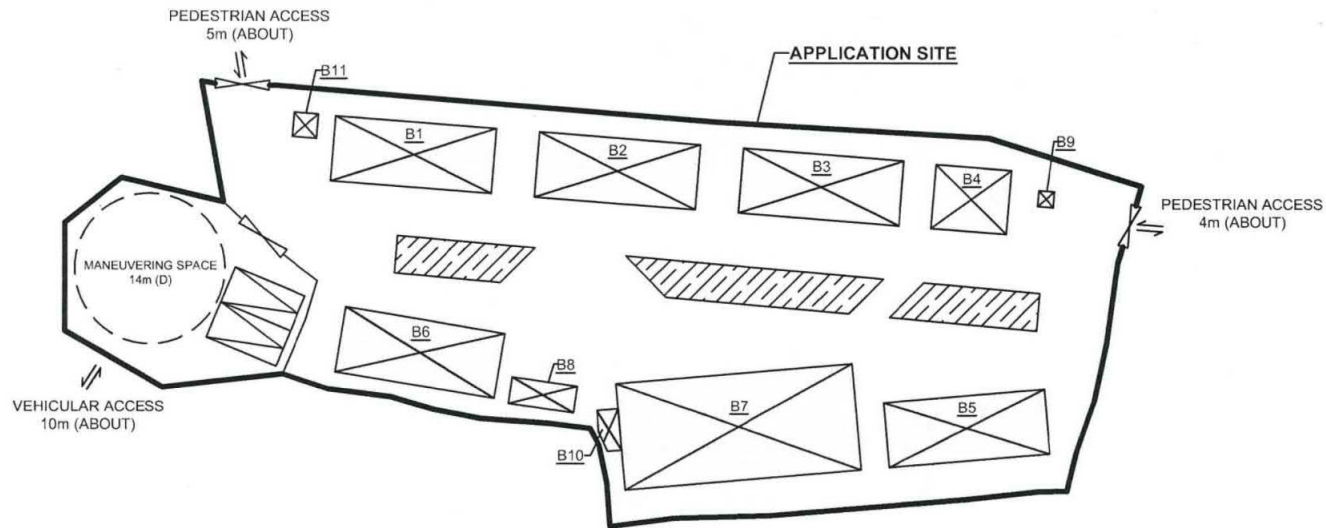
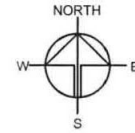
DEVELOPMENT PARAMETERS

APPLICATION SITE AREA: 2,883.1m²(ABOUT)
 COVERED AREA: 749.4m²(ABOUT)
 UNCOVERED AREA: 2,133.7(AABOUT)

NO. OF STRUCTURE: 11
 NON-DOMESTIC GFA: 1,206.9m²(ABOUT)
 BUILDING HEIGHT: 2m - 7.2m (ABOUT)
 NO. OF STOREY: 1 -2 STOREY

NO. OF L/UL SPACE FOR LGV (3.5m X 7m): 2

STRUCTURE	USE	COVERED AREA	NON-DOM. GFA	BUILDING HEIGHT
B1	SHOP & SERVICES	91.5m ² (ABOUT)	183m ² (ABOUT)	7.2m (ABOUT) (2-STOREY)
B2	SHOP & SERVICES	91.5m ² (ABOUT)	183m ² (ABOUT)	7.2m (ABOUT) (2-STOREY)
B3	SHOP & SERVICES	91.5m ² (ABOUT)	183m ² (ABOUT)	7.2m (ABOUT) (2-STOREY)
B4	SHOP & SERVICES	42m ² (ABOUT)	42m ² (ABOUT)	3.6m (ABOUT) (1-STOREY)
B5	SHOP & SERVICES	91.5m ² (ABOUT)	183m ² (ABOUT)	7.2m (ABOUT) (2-STOREY)
B6	SHOP & SERVICES	91.5m ² (ABOUT)	183m ² (ABOUT)	7.2m (ABOUT) (2-STOREY)
B7	SHOP & SERVICES	220m ² (ABOUT)	220m ² (ABOUT)	4.2m (ABOUT) (1-STOREY)
B8	WASHROOM	15.25m ² (ABOUT)	15.25m ² (ABOUT)	3.5m (ABOUT) (1-STOREY)
B9	GUARD ROOM	2.25m ² (ABOUT)	2.25m ² (ABOUT)	3m (ABOUT) (1-STOREY)
B10	FS WATER TANK & PANEL	7.1m ² (ABOUT)	7.1m ² (ABOUT)	2m (ABOUT) (1-STOREY)
B11	METER ROOM	5.3m ² (ABOUT)	5.3m ² (ABOUT)	3m (ABOUT) (1-STOREY)
TOTAL		749.4m² (ABOUT)	1,206.9m² (ABOUT)	



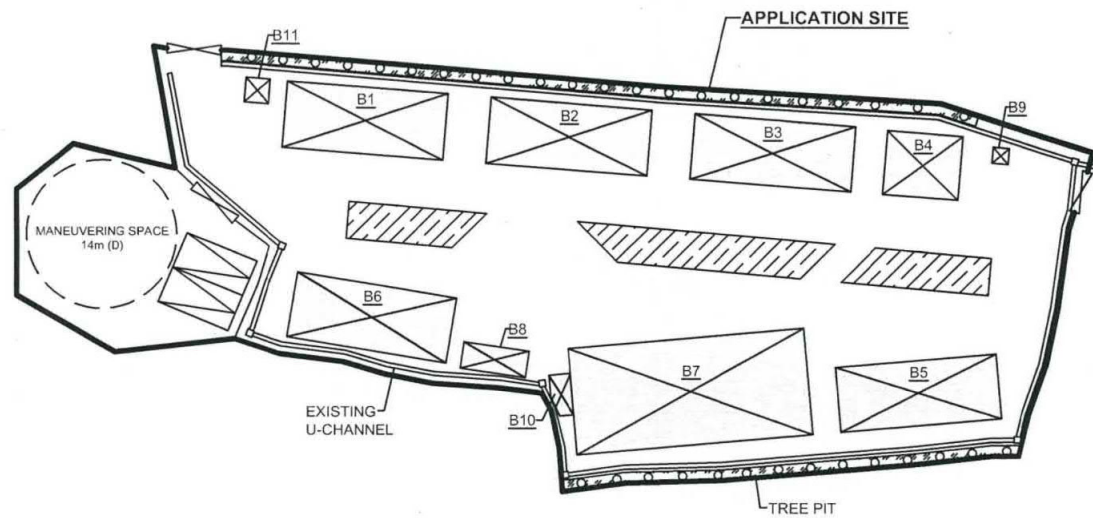
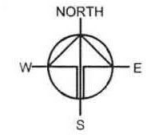
Drawing No.	Ver.
P02	01
Project	
TEMPORARY SHOP AND SERVICES WITH ANCILLARY FACILITIES FOR A PERIOD OF 5 YEARS	
LOT 341 AND VARIOUS LOTS IN D.D. 109	
Drawing Title	
LAYOUT PLAN	
Scale of A4	
1:600	
Drawn	Date
	14.12.2018
Revised	Date
	4.1.2019

(摘錄自申請人於 4.1.2019 提交的申請書)
 (Extract from Applicant's Submission of 4.1.2019)

參考編號 REFERENCE No.	繪圖 DRAWING
A/YL-KTS/812	A-2

LANDSCAPE PROPOSAL

NO. OF EXISTING TREE: 36
 SPECIES OF TREE: TERMINALIA CATAPPA LINN
 SPACING OF TREE: NOT MORE THAN 4m (ABOUT)
 HEIGHT OF TREE: NOT LESS THAN 2.75m (ABOUT)

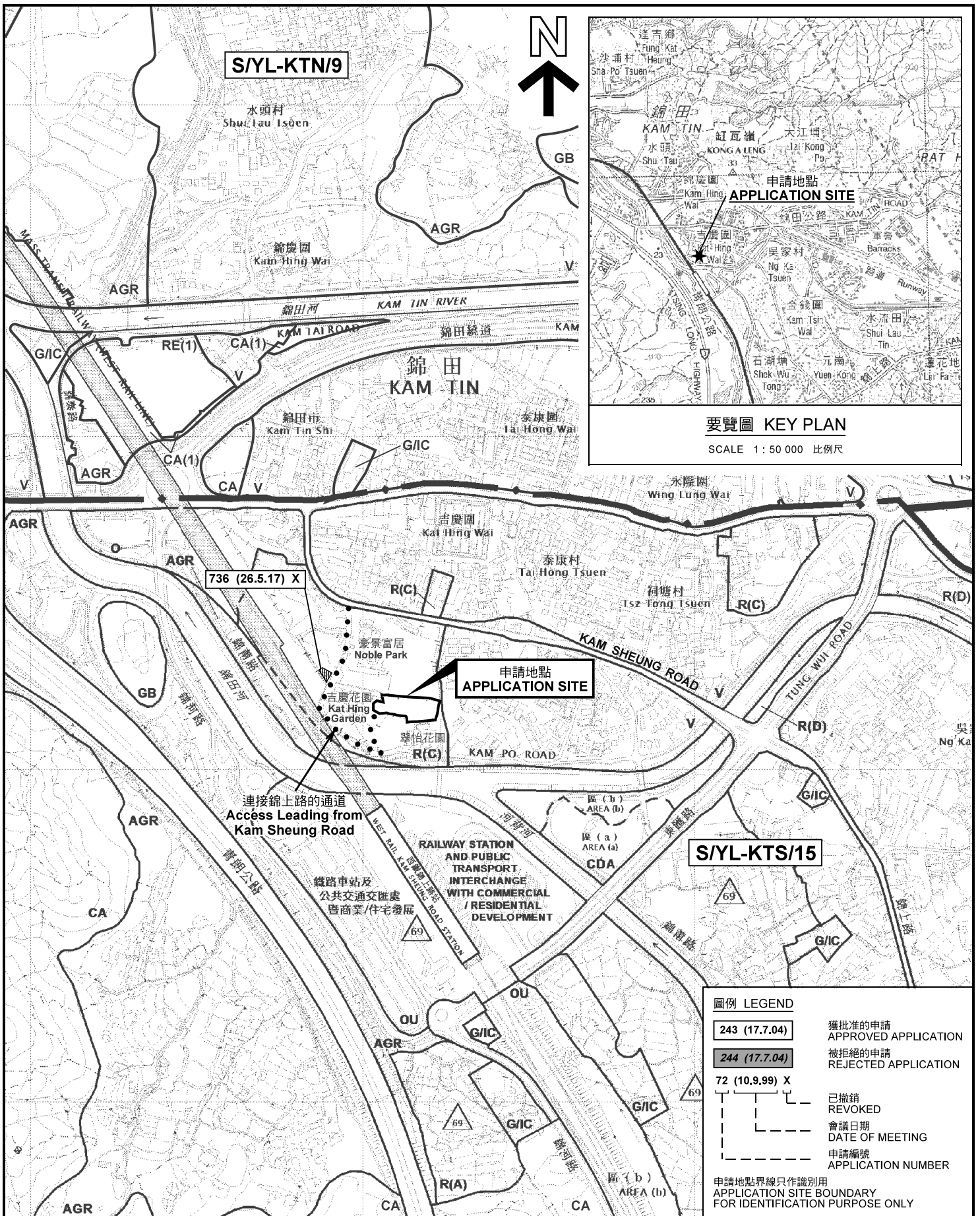


- LEGEND**
- EXISTING TREE
 - STRUCTURE
 - LUL SPACE FOR LGV
 - LANDSCAPING (WATER FEATURES)

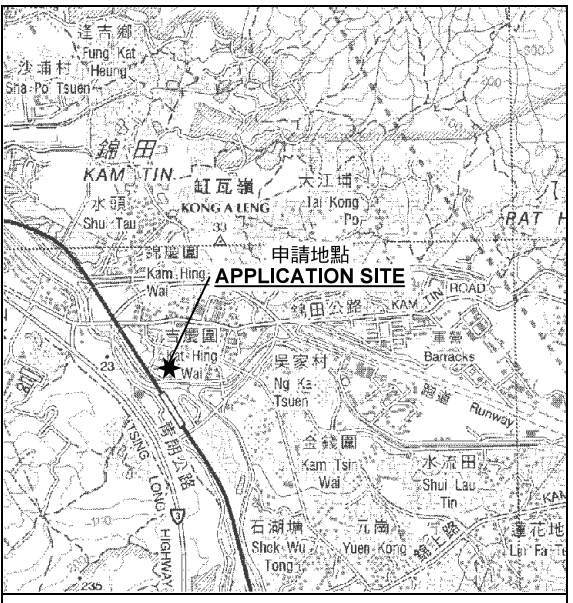
Drawing No.	Ver.
P03	01
Project	
TEMPORARY SHOP AND SERVICES WITH ANCILLARY FACILITIES FOR A PERIOD OF 5 YEARS	
LOT 341 AND VARIOUS LOTS IN D.D. 109	
Drawing Title	
LANDSCAPE PLAN	
Scale of A4	
1:600	
Drawn	Date
	14.12.2018
Revised	Date
	4.1.2019

(摘錄自申請人於 4.1.2019 提交的申請書)
 (Extract from Applicant's Submission of 4.1.2019)

參考編號 REFERENCE No.	繪圖 DRAWING
A/YL-KTS/812	A-3



S/YL-KTN/9



要覽圖 KEY PLAN

SCALE 1 : 50 000 比例尺

736 (26.5.17) X

申請地點 APPLICATION SITE

S/YL-KTS/15

連接錦上路的通道
Access Leading from
Kam Sheung Road

RAILWAY STATION AND PUBLIC TRANSPORT INTERCHANGE WITH COMMERCIAL / RESIDENTIAL DEVELOPMENT

圖例 LEGEND

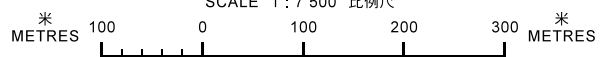
	243 (17.7.04)	獲批准的申請 APPROVED APPLICATION
	244 (17.7.04)	被拒絕的申請 REJECTED APPLICATION
	72 (10.9.99) X	已撤銷 REVOKED
		會議日期 DATE OF MEETING
		申請編號 APPLICATION NUMBER

申請地點界線只作識別用
APPLICATION SITE BOUNDARY FOR IDENTIFICATION PURPOSE ONLY

本摘要圖於2019年2月15日擬備，
所根據的資料為於2018年12月11日
展示的分區計劃大綱圖編號 S/YL-KTS/15
EXTRACT PLAN PREPARED ON 15.2.2019
BASED ON OUTLINE ZONING PLAN No.
S/YL-KTS/15 APPROVED ON 11.12.2018

位置圖及同類申請 LOCATION PLAN WITH SIMILAR APPLICATION

臨時商店及服務行業連附屬設施 (為期5年)
元朗錦田錦上路丈量約份第109約地段第341號、
第342號、第343號、第344號 (部分) 及第348號 (部分)
TEMPORARY SHOP AND SERVICES
WITH ANCILLARY FACILITIES FOR A PERIOD OF 5 YEARS
LOTS 341, 342, 343, 344 (PART) AND 348 (PART) IN D.D. 109,
KAM SHEUNG ROAD, KAM TIN, YUEN LONG
SCALE 1 : 7 500 比例尺

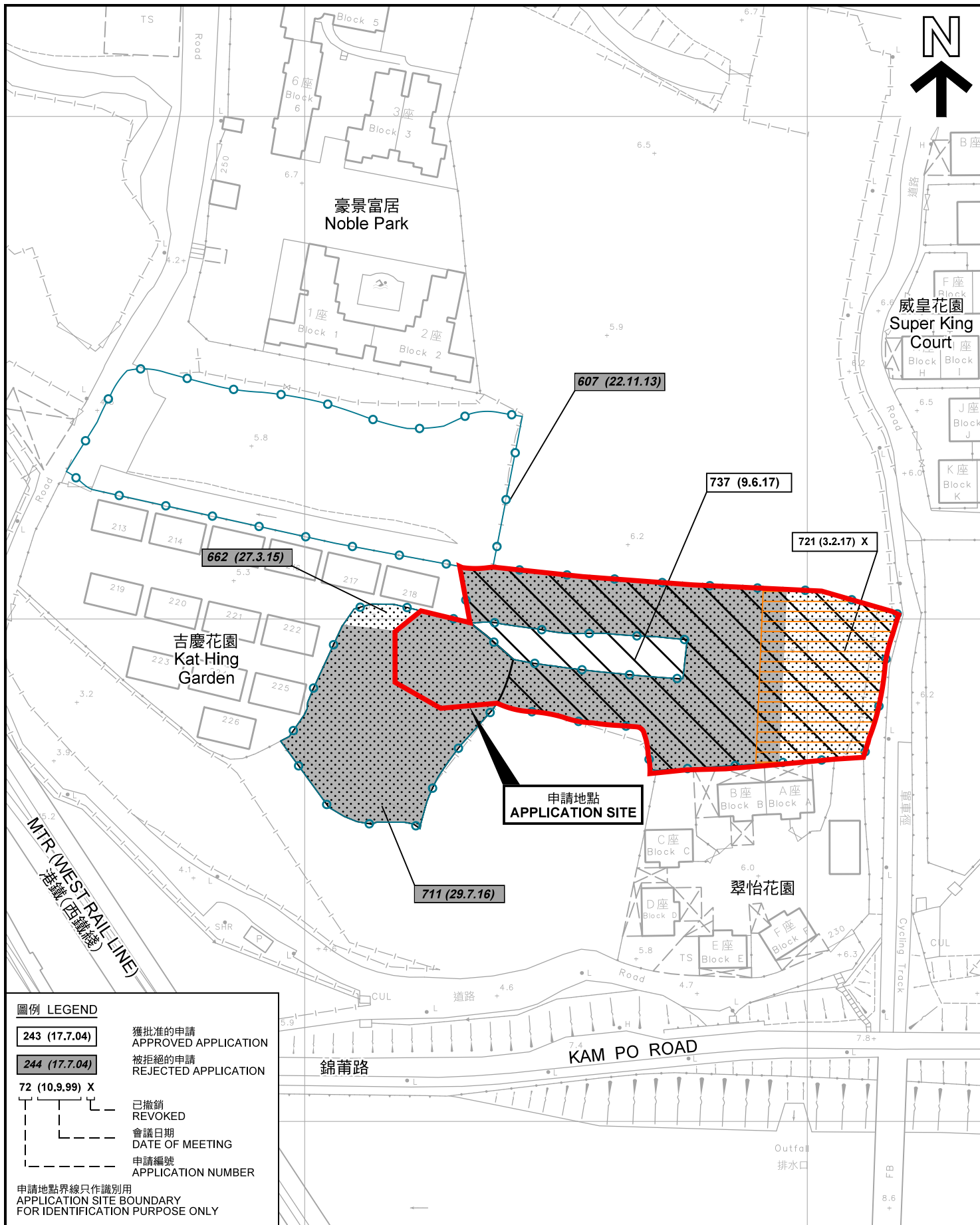


規劃署
PLANNING
DEPARTMENT



參考編號
REFERENCE No.
A/YL-KTS/812

圖 PLAN
A-1a



圖例 LEGEND

- 243 (17.7.04)** 獲批准的申請 APPROVED APPLICATION
- 244 (17.7.04)** 被拒絕的申請 REJECTED APPLICATION
- 72 (10.9.99) X** 已撤銷 REVOKED
- 會議日期 DATE OF MEETING
- 申請編號 APPLICATION NUMBER

申請地點界線只作識別用
APPLICATION SITE BOUNDARY FOR IDENTIFICATION PURPOSE ONLY

本摘要圖於2019年2月1日擬備，所根據的資料為測量圖編號 6-NE-12A 及 6-NE-12C
EXTRACT PLAN PREPARED ON 1.2.2019 BASED ON SURVEY SHEETS No. 6-NE-12A & 6-NE-12C

先前申請圖 PREVIOUS APPLICATION PLAN

臨時商店及服務行業連附屬設施（為期5年）
元朗錦田錦上路丈量約份第109約地段第341號、第342號、第343號、第344號（部分）及第348號（部分）
TEMPORARY SHOP AND SERVICES WITH ANCILLARY FACILITIES FOR A PERIOD OF 5 YEARS
LOTS 341, 342, 343, 344 (PART) AND 348 (PART) IN D.D. 109, KAM SHEUNG ROAD, KAM TIN, YUEN LONG
SCALE 1 : 1 000 比例尺

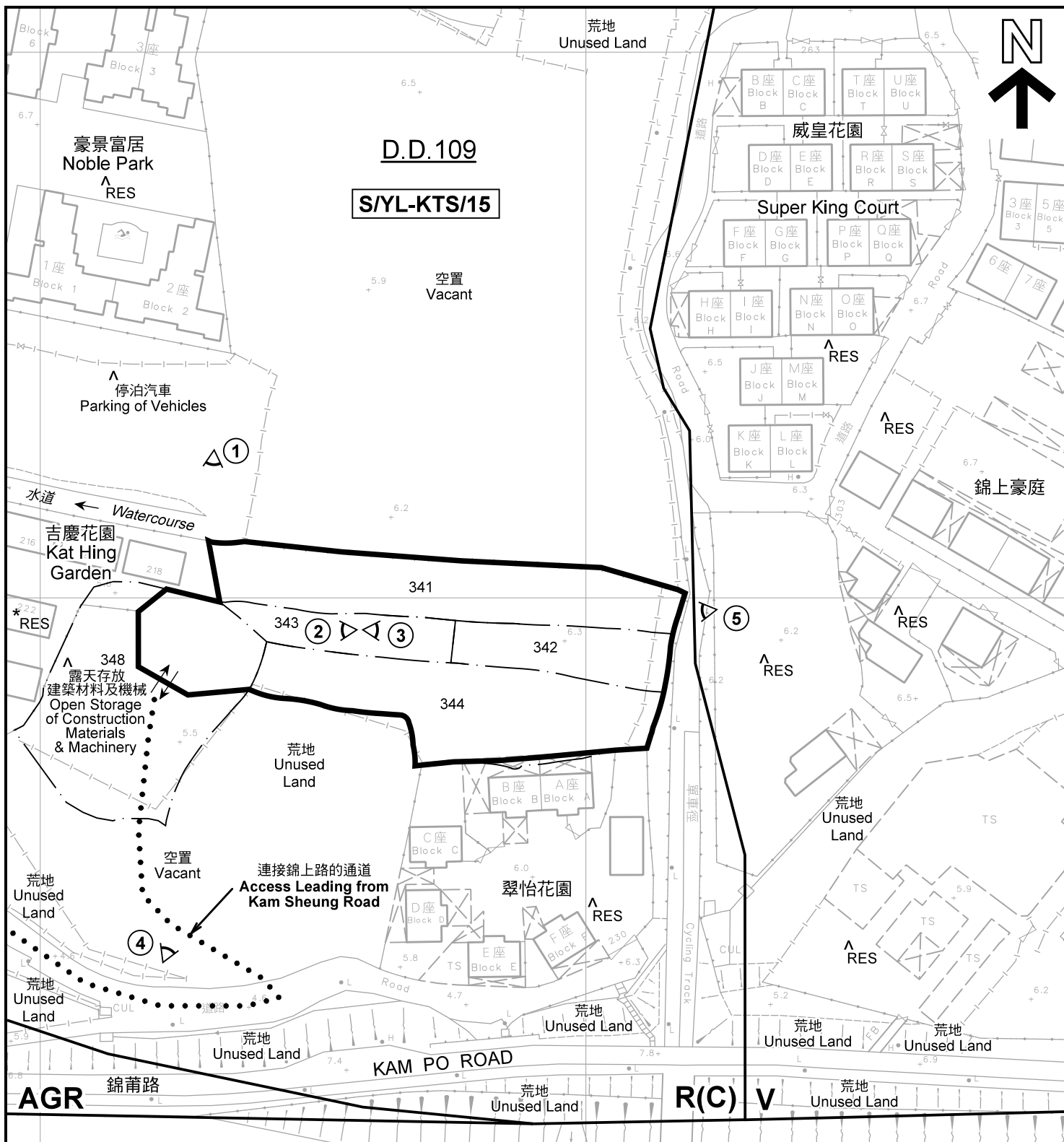
米 METRES 20 0 20 40 米 METRES

規劃署
PLANNING DEPARTMENT



參考編號
REFERENCE No.
A/YL-KTS/812

圖 PLAN
A-1b



註釋 Notes:

- (1) 2019年1月11日勘測的土地用途
Land uses shown on this plan are in accordance with the land use survey conducted by the Planning Department on 11.1.2019
- (2) * 土地用途跟1991年10月勘測的土地用途一致
Indicates that the use is the same as that revealed by the land use survey conducted by the Planning Department in Oct 1991
- (3) ^ 土地用途跟1991年10月勘測的土地用途有別
Indicates that the use is different from that revealed by the land use survey conducted by the Planning Department in Oct 1991

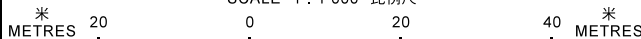
圖例 LEGEND

- 申請地點(界線只作識別用)
APPLICATION SITE (BOUNDARY FOR IDENTIFICATION PURPOSE ONLY)
- R(C) 住宅(丙類)
RESIDENTIAL (GROUP C)
- V 鄉村式發展
VILLAGE TYPE DEVELOPMENT
- AGR 農業
AGRICULTURE
- RES 住用構築物
RESIDENTIAL STRUCTURES
- ①^ 實地照片的觀景點
VIEWING POINT OF SITE PHOTO
- 入口/出口
INGRESS / EGRESS

平面圖 SITE PLAN

臨時商店及服務行業連附屬設施(為期5年)
元朗錦田錦上路丈量約份第109約地段第341號、
第342號、第343號、第344號(部分)及第348號(部分)
TEMPORARY SHOP AND SERVICES
WITH ANCILLARY FACILITIES FOR A PERIOD OF 5 YEARS
LOTS 341, 342, 343, 344 (PART) AND 348 (PART) IN D.D. 109,
KAM SHEUNG ROAD, KAM TIN, YUEN LONG

SCALE 1 : 1 000 比例尺



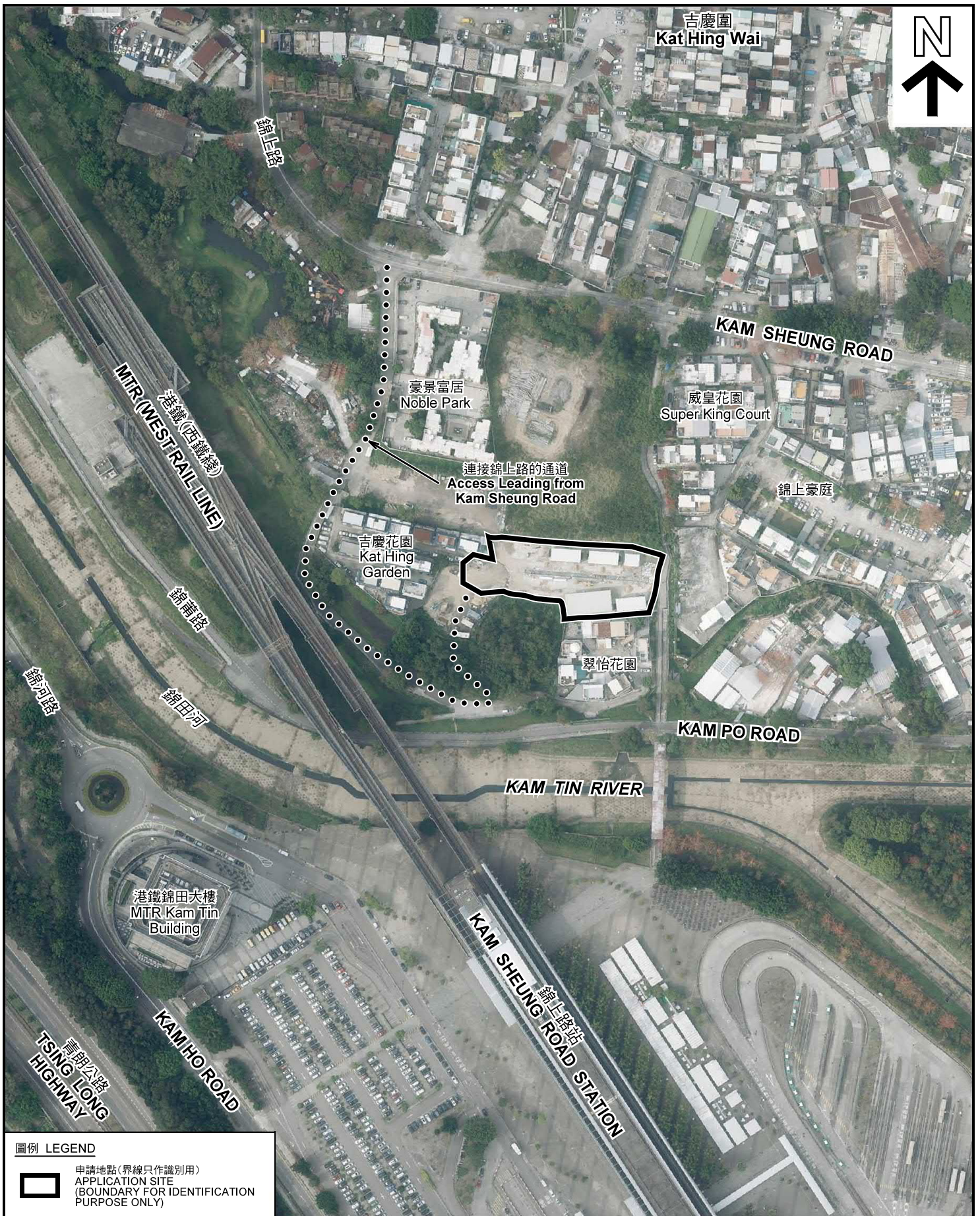
本摘要圖於2019年2月15日擬備，所根據的資料為測量圖編號 6-NE-12A
EXTRACT PLAN PREPARED ON 15.2.2019
BASED ON SURVEY SHEETS No. 6-NE-12A

**規劃署
PLANNING
DEPARTMENT**



參考編號
REFERENCE No.
A/YL-KTS/812

圖 PLAN
A-2



圖例 LEGEND



申請地點 (界線只作識別用)
APPLICATION SITE
(BOUNDARY FOR IDENTIFICATION
PURPOSE ONLY)

本摘要圖於2019年2月15日擬備，所根據的資料為地政總署於2018年3月13日拍得的航攝照片編號 E035764C
EXTRACT PLAN PREPARED ON 15.2.2019
BASED ON AERIAL PHOTO No.
E035764C TAKEN ON 13.3.2018
BY LANDS DEPARTMENT

航攝照片 AERIAL PHOTO

臨時商店及服務行業連附屬設施 (為期5年)
元朗錦田錦上路丈量約份第109約地段第341號、
第342號、第343號、第344號 (部分) 及第348號 (部分)
TEMPORARY SHOP AND SERVICES
WITH ANCILLARY FACILITIES FOR A PERIOD OF 5 YEARS
LOTS 341, 342, 343, 344 (PART) AND 348 (PART) IN D.D. 109,
KAM SHEUNG ROAD, KAM TIN, YUEN LONG

規劃署
PLANNING
DEPARTMENT



參考編號
REFERENCE No.
AYL-KTS/812

圖 PLAN
A-3



申請地點界線只作識別用 APPLICATION SITE BOUNDARY FOR IDENTIFICATION PURPOSE ONLY

實地照片 SITE PHOTOS

臨時商店及服務行業連附屬設施（為期5年）
 元朗錦田錦上路丈量約份第109約地段第341號、
 第342號、第343號、第344號（部分）及第348號（部分）
 TEMPORARY SHOP AND SERVICES
 WITH ANCILLARY FACILITIES FOR A PERIOD OF 5 YEARS
 LOTS 341, 342, 343, 344 (PART) AND 348 (PART) IN D.D. 109,
 KAM SHEUNG ROAD, KAM TIN, YUEN LONG

規劃署
**PLANNING
 DEPARTMENT**



參考編號
 REFERENCE No.
A/YL-KTS/812

圖 PLAN
A-4

本圖於2019年1月22日擬備，所根據的資料為攝於2019年1月11日的實地照片
 PLAN PREPARED ON 22.1.2019
 BASED ON SITE PHOTOS
 TAKEN ON 11.1.2019