

**Legend**

- Site Boundary with Peripheral Fencing
- Storage Rack
- Shelter for Ancillary Office & Storage
- Visitor Car Parking Spaces  
Waiting/Loading/Unloading Spaces

Landscaping planted on the site:

- ① ② ③ ④ ⑤ ⑥ ⑦ ⑧ ⑨ ⑩ ⑪ ⑫ ⑬ ⑭ ⑮ ⑯ ⑰ ⑱ ⑲ ⑳ ㉑ ㉒ ㉓ ㉔ ㉕ ㉖ ㉗ ㉘ ㉙ ㉚ ㉛ ㉜ ㉝ ㉞ ㉟ ㊱ ㊲ ㊳ ㊴ ㊵ ㊶ ㊷ ㊸ ㊹ ㊺ ㊻ ㊼ ㊽ ㊾ ㊿ Euphoria longan Steud. (龍眼)
- ② ⑩ ⑬ ⑲ ⑳ ㉑ ㉒ ㉓ ㉔ ㉕ ㉖ ㉗ ㉘ ㉙ ㉚ ㉛ ㉜ ㉝ ㉞ ㉟ ㊱ ㊲ ㊳ ㊴ ㊵ ㊶ ㊷ ㊸ ㊹ ㊺ ㊻ ㊼ ㊽ ㊾ ㊿ Litchi chinensis Sonn. (荔枝)
- ③ ④ ⑨ Averrhoa carambola L. (楊桃)
- ⑤ ⑬ Syzygium jambos Alston (蒲桃)
- ⑥ Manilkara achras Fosberg (人心果)
- ⑦ ⑧ ⑱ Bauhinia blakeana Dunn (洋紫荊)
- ⑪ Artocarpus heterophyllus (大樹菠蘿)
- ⑫ ⑬ ⑳ Clausena lansium Skeels (黃皮)
- ⑬ Pyrus pyrifolia (Burm. F.) Nakai (沙梨)
- ⑭ ⑮ ㉑ Mangifera indica L. (芒果)
- ㉑ Sterculia nobilis Smith. (蘋婆)

**Layout and Landscaping Plan**

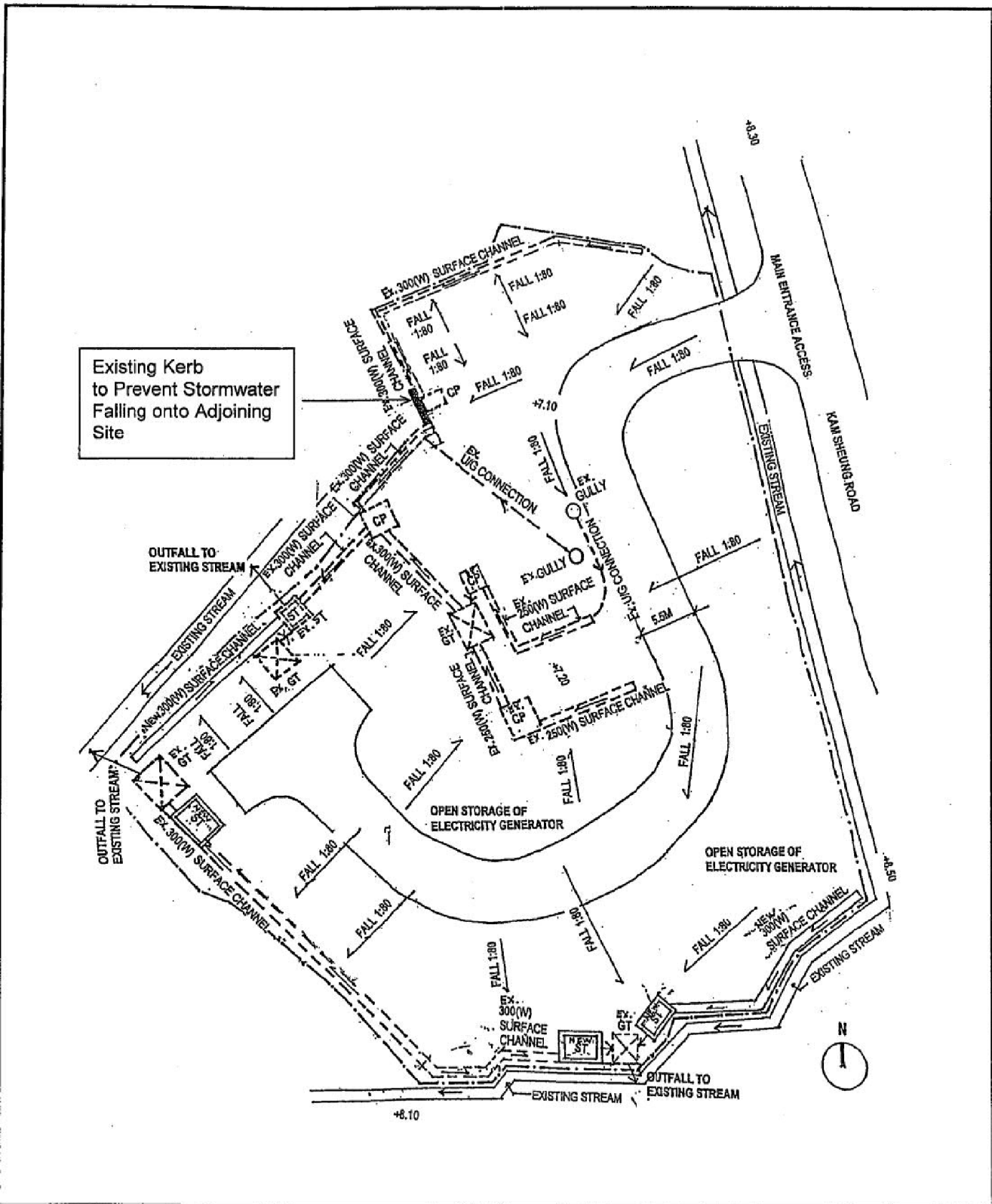
S16 Application for  
Proposed Temporary Open Storage of  
Electricity Generators and Compressors  
for 3 Years  
at Various Lots in DD106,  
Shek Wu Tong,  
Kam Tin, Yuen Long

0 10 20 METRES

Plan 3

**PlanArch Consultants Ltd.**

Revision:                      Date: 25.4.2019



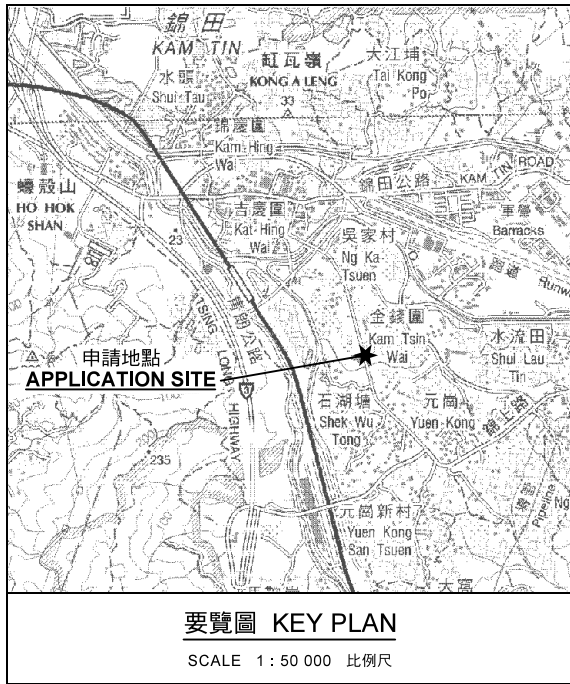
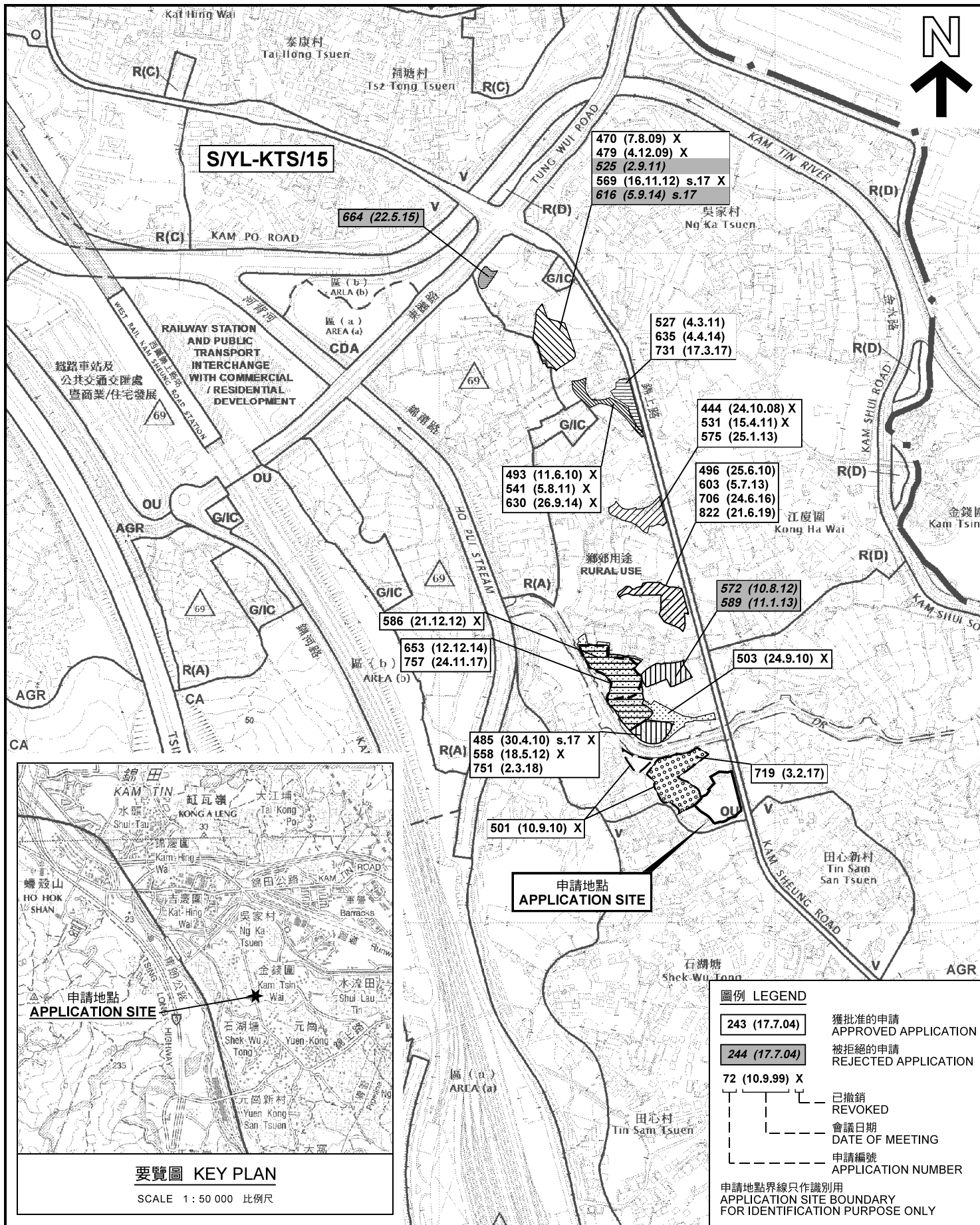
Legend	
	GT GREASE TRAP
	CP CATCHPIT
	SITE BOUNDARY
	ST STAND TRAP

**Approved Drainage Proposal**

S16 Application for  
Proposed Temporary Open Storage of Electricity  
Generators and Compressors for 3 Years  
at Various Lots in DD106, Shek Wu Tong,  
Kam Tin, Yuen Long

0      10      20      30 METRES

Plan 4	
<b>PlanArch Consultants Ltd.</b>	
Revision:	Date: 25.4.2019



**圖例 LEGEND**

243 (17.7.04)	獲批准的申請 APPROVED APPLICATION
244 (17.7.04)	被拒絕的申請 REJECTED APPLICATION
72 (10.9.99) X	已撤銷 REVOKED
---	會議日期 DATE OF MEETING
---	申請編號 APPLICATION NUMBER

申請地點界線只作識別用  
APPLICATION SITE BOUNDARY  
FOR IDENTIFICATION PURPOSE ONLY


**位置圖及同類申請 LOCATION PLAN WITH SIMILAR APPLICATIONS**

臨時露天存放發電機及壓縮器(為期三年)  
元朗錦田石湖塘丈量約份第106約地段第391號餘段(部分)及第392號餘段  
TEMPORARY OPEN STORAGE OF ELECTRICITY GENERATORS  
AND COMPRESSORS FOR A PERIOD OF 3 YEARS  
LOTS 391 RP (PART) AND 392 RP IN D.D.106,  
SHEK WU TONG, KAM TIN, YUEN LONG

SCALE 1 : 7 500 比例尺

米 100 0 100 200 300 METRES

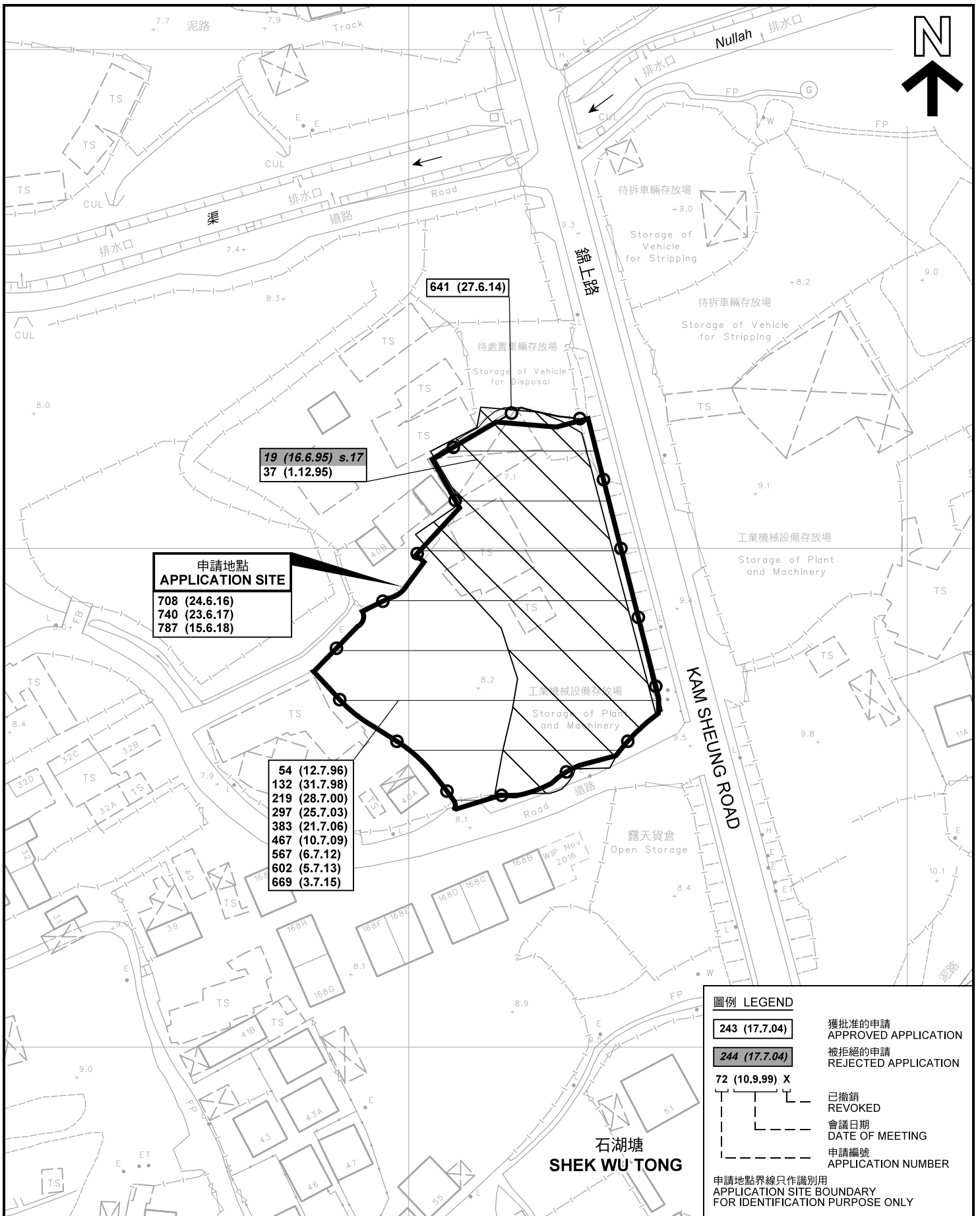
**規劃署  
PLANNING  
DEPARTMENT**



參考編號  
REFERENCE No.  
**A/YL-KTS/823**

**圖 PLAN  
A-1a**

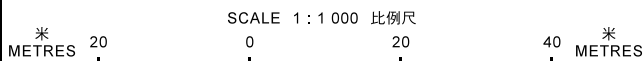
本摘要圖於2019年6月27日擬備，  
所根據的資料為於2018年12月11日  
核准的分區計劃大綱圖編號 S/YL-KTS/15  
EXTRACT PLAN PREPARED ON 27.6.2019  
BASED ON OUTLINE ZONING PLAN No.  
S/YL-KTS/15 APPROVED ON 11.12.2018



**先前申請圖 PREVIOUS APPLICATION PLAN**

臨時露天存放發電機及壓縮器(為期三年)  
元朗錦田石湖塘丈量約份第106約地段第391號餘段(部分)及第392號餘段  
TEMPORARY OPEN STORAGE OF ELECTRICITY GENERATORS AND COMPRESSORS FOR A PERIOD OF 3 YEARS  
LOTS 391 RP (PART) AND 392 RP IN D.D.106,  
SHEK WU TONG, KAM TIN, YUEN LONG

本摘要圖於2019年6月4日擬備，所根據的資料為測量圖編號 6-NE-17B 及 18A  
EXTRACT PLAN PREPARED ON 4.6.2019  
BASED ON SURVEY SHEETS No. 6-NE-17B & 18A

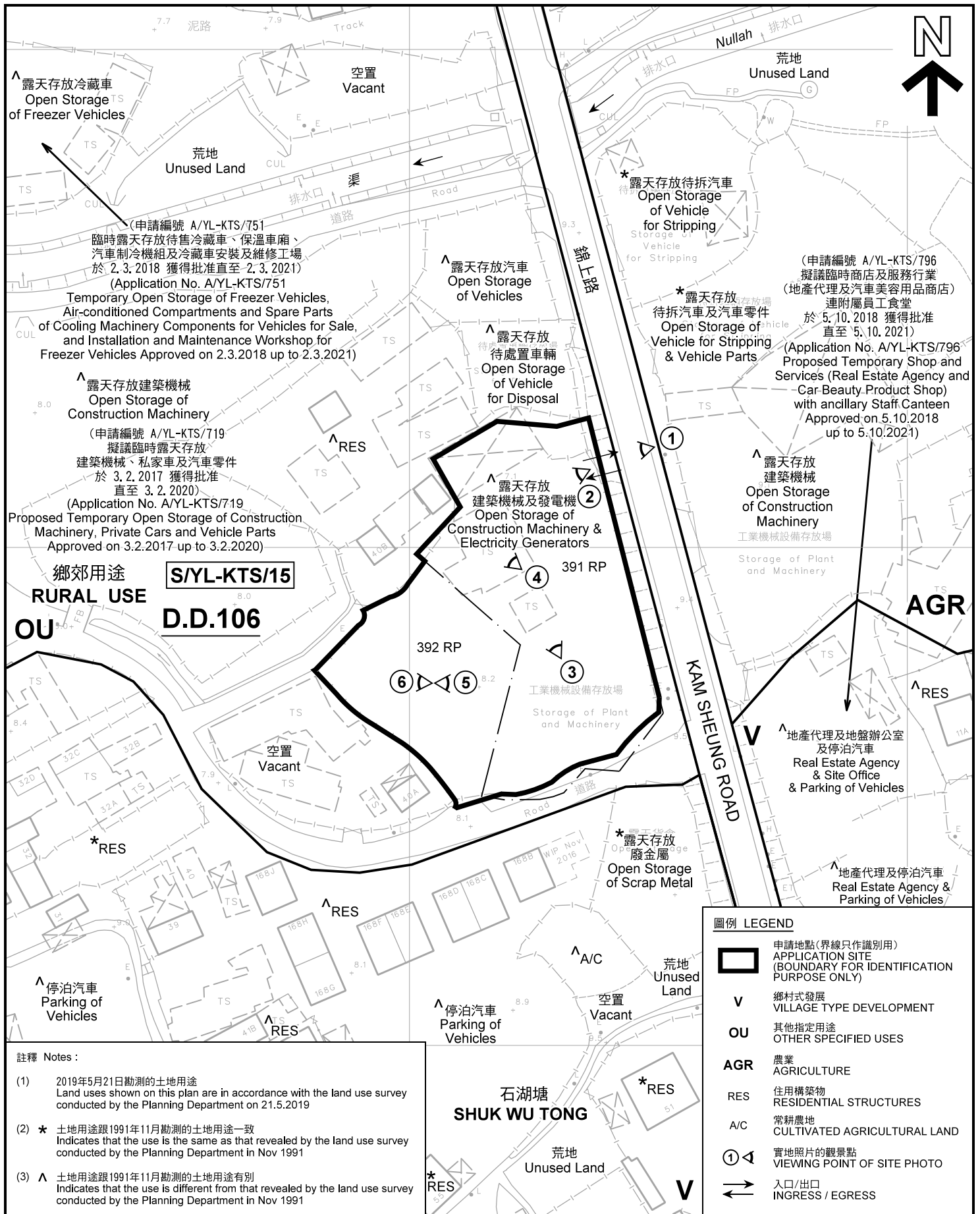


規劃署  
PLANNING  
DEPARTMENT



參考編號  
REFERENCE No.  
A/YL-KTS/823

圖 PLAN  
A-1b



**註釋 Notes:**

- (1) 2019年5月21日勘測的土地用途  
Land uses shown on this plan are in accordance with the land use survey conducted by the Planning Department on 21.5.2019
- (2) \* 土地用途跟1991年11月勘測的土地用途一致  
Indicates that the use is the same as that revealed by the land use survey conducted by the Planning Department in Nov 1991
- (3) ^ 土地用途跟1991年11月勘測的土地用途有別  
Indicates that the use is different from that revealed by the land use survey conducted by the Planning Department in Nov 1991

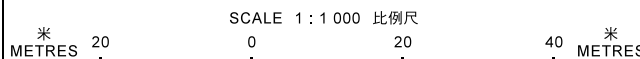
**圖例 LEGEND**

- 申請地點(界線只作識別用)  
APPLICATION SITE (BOUNDARY FOR IDENTIFICATION PURPOSE ONLY)
- V** 鄉村式發展  
VILLAGE TYPE DEVELOPMENT
- OU** 其他指定用途  
OTHER SPECIFIED USES
- AGR** 農業  
AGRICULTURE
- RES** 住用構築物  
RESIDENTIAL STRUCTURES
- A/C** 常耕農地  
CULTIVATED AGRICULTURAL LAND
- 實地照片的觀景點  
VIEWING POINT OF SITE PHOTO
- 入口/出口  
INGRESS / EGRESS

**平面圖 SITE PLAN**

臨時露天存放發電機及壓縮器(為期三年)  
元朗錦田石湖塘丈量約份第106約地段第391號餘段(部分)及第392號餘段  
TEMPORARY OPEN STORAGE OF ELECTRICITY GENERATORS AND COMPRESSORS FOR A PERIOD OF 3 YEARS  
LOTS 391 RP (PART) AND 392 RP IN D.D.106,  
SHEK WU TONG, KAM TIN, YUEN LONG

本摘要圖於2019年6月18日擬備, 所根據的資料為測量圖編號 6-NE-17B 及 18A  
EXTRACT PLAN PREPARED ON 18.6.2019  
BASED ON SURVEY SHEETS No. 6-NE-17B & 18A



**規劃署  
PLANNING  
DEPARTMENT**



參考編號  
REFERENCE No.  
**A/YL-KTS/823**

**圖 PLAN  
A-2**



圖例 LEGEND



申請地點(界線只作識別用)  
APPLICATION SITE  
(BOUNDARY FOR IDENTIFICATION  
PURPOSE ONLY)

本摘要圖於2019年6月5日擬備，所根據的資料為地政總署於2018年3月13日拍得的航攝照片編號 E035392C  
EXTRACT PLAN PREPARED ON 5.6.2019  
BASED ON AERIAL PHOTO No.  
E035392C TAKEN ON 13.3.2018  
BY LANDS DEPARTMENT

航攝照片 AERIAL PHOTO

臨時露天存放發電機及壓縮器(為期三年)  
元朗錦田石湖塘丈量約份第106約地段第391號餘段(部分)及第392號餘段  
TEMPORARY OPEN STORAGE OF ELECTRICITY GENERATORS  
AND COMPRESSORS FOR A PERIOD OF 3 YEARS  
LOTS 391 RP (PART) AND 392 RP IN D.D.106,  
SHEK WU TONG, KAM TIN, YUEN LONG

規劃署  
PLANNING  
DEPARTMENT



參考編號  
REFERENCE No.  
AYL-KTS/823

圖 PLAN  
A-3



申請地點界線只作識別用 APPLICATION SITE BOUNDARY FOR IDENTIFICATION PURPOSE ONLY

### 實地照片 SITE PHOTOS

臨時露天存放發電機及壓縮器(為期三年)  
元朗錦田石湖塘丈量約份第106約地段第391號餘段(部分)及第392號餘段  
TEMPORARY OPEN STORAGE OF ELECTRICITY GENERATORS  
AND COMPRESSORS FOR A PERIOD OF 3 YEARS  
LOTS 391 RP (PART) AND 392 RP IN D.D.106,  
SHEK WU TONG, KAM TIN, YUEN LONG

規劃署  
PLANNING  
DEPARTMENT



參考編號  
REFERENCE No.  
AYL-KTS/823

圖 PLAN  
A-4a

本圖於2019年6月26日擬備，所根據的資料  
為攝於2019年5月24日的實地照片  
PLAN PREPARED ON 26.6.2019  
BASED ON SITE PHOTOS  
TAKEN ON 24.5.2019

4



申請地點  
APPLICATION SITE

5



申請地點  
APPLICATION SITE

6



申請地點  
APPLICATION SITE

**實地照片 SITE PHOTOS**

臨時露天存放發電機及壓縮器(為期三年)  
元朗錦田石湖塘丈量約份第106約地段第391號餘段(部分)及第392號餘段  
TEMPORARY OPEN STORAGE OF ELECTRICITY GENERATORS  
AND COMPRESSORS FOR A PERIOD OF 3 YEARS  
LOTS 391 RP (PART) AND 392 RP IN D.D.106,  
SHEK WU TONG, KAM TIN, YUEN LONG

規劃署  
PLANNING  
DEPARTMENT



參考編號  
REFERENCE No.  
A/YL-KTS/823

圖 PLAN  
A-4b

本圖於2019年6月26日擬備，所根據的資料  
為攝於2019年5月24日的實地照片  
PLAN PREPARED ON 26.6.2019  
BASED ON SITE PHOTOS  
TAKEN ON 24.5.2019