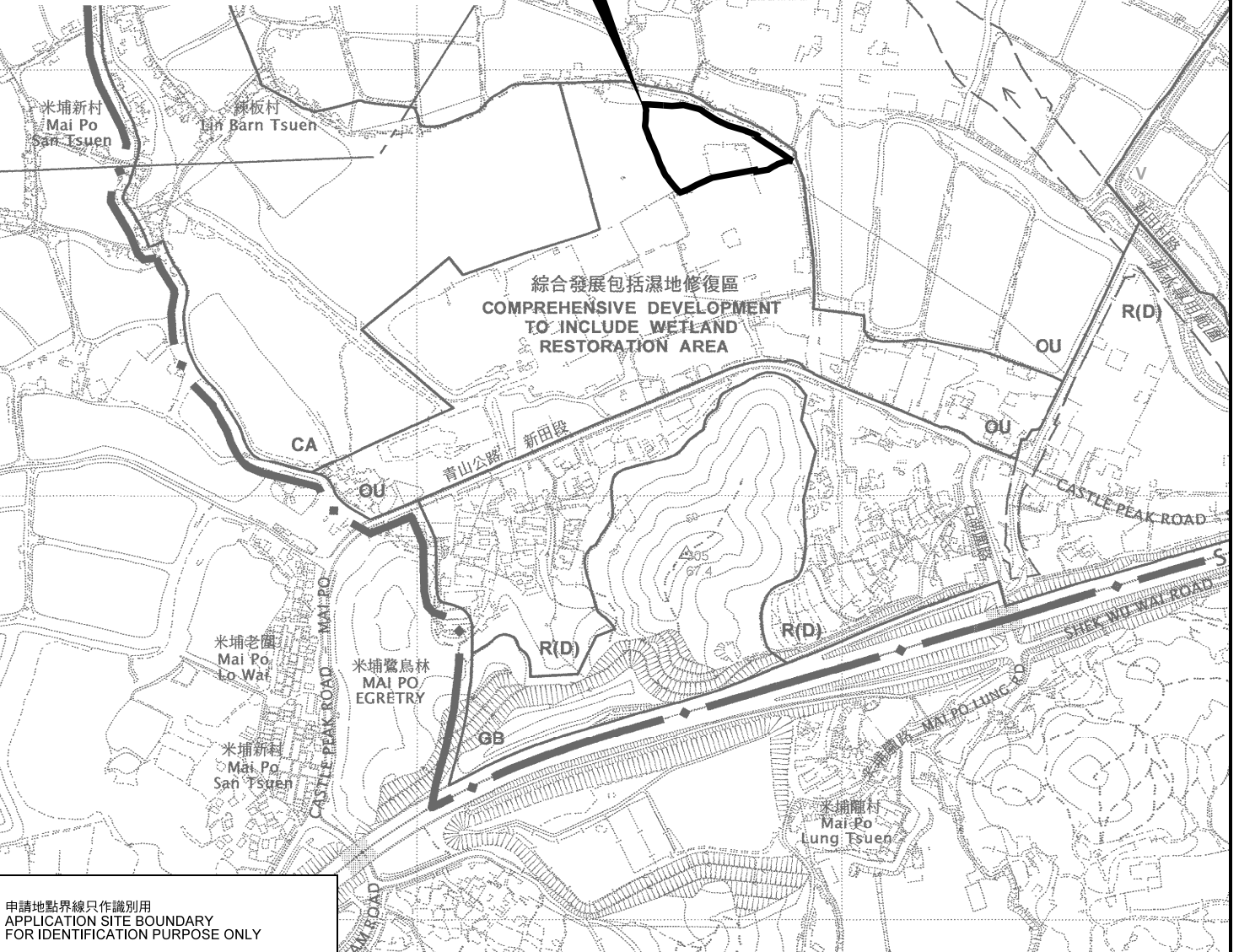




要覽圖 KEY PLAN

SCALE 1 : 50 000 比例尺

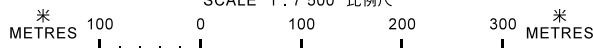


申請地點界線只作識別用
APPLICATION SITE BOUNDARY
FOR IDENTIFICATION PURPOSE ONLY

位置圖 LOCATION PLAN

臨時貨櫃車停車場連附屬辦公室及存放用途 (為期3年)
元朗新田丈量約份第99約地段769號餘段 (部分)
TEMPORARY CONTAINER VEHICLE PARK WITH
ANCILLARY SITE OFFICE AND STORAGE USES
FOR A PERIOD OF 3 YEARS
LOT 769 RP (PART) IN D.D. 99,
SAN TIN, YUEN LONG

SCALE 1 : 7 500 比例尺



規劃署
PLANNING
DEPARTMENT



參考編號
REFERENCE No.
A/YL-ST/553

圖 PLAN
A-1