

Extract from Kam Tin South Outline Zoning Plan  
 No. S/YL-KTS/13 gazetted on 9.9.2016

 Top Bright Consultants Ltd.

Scale 1 : 7 500

### FIGURE 4

For Identification Purpose

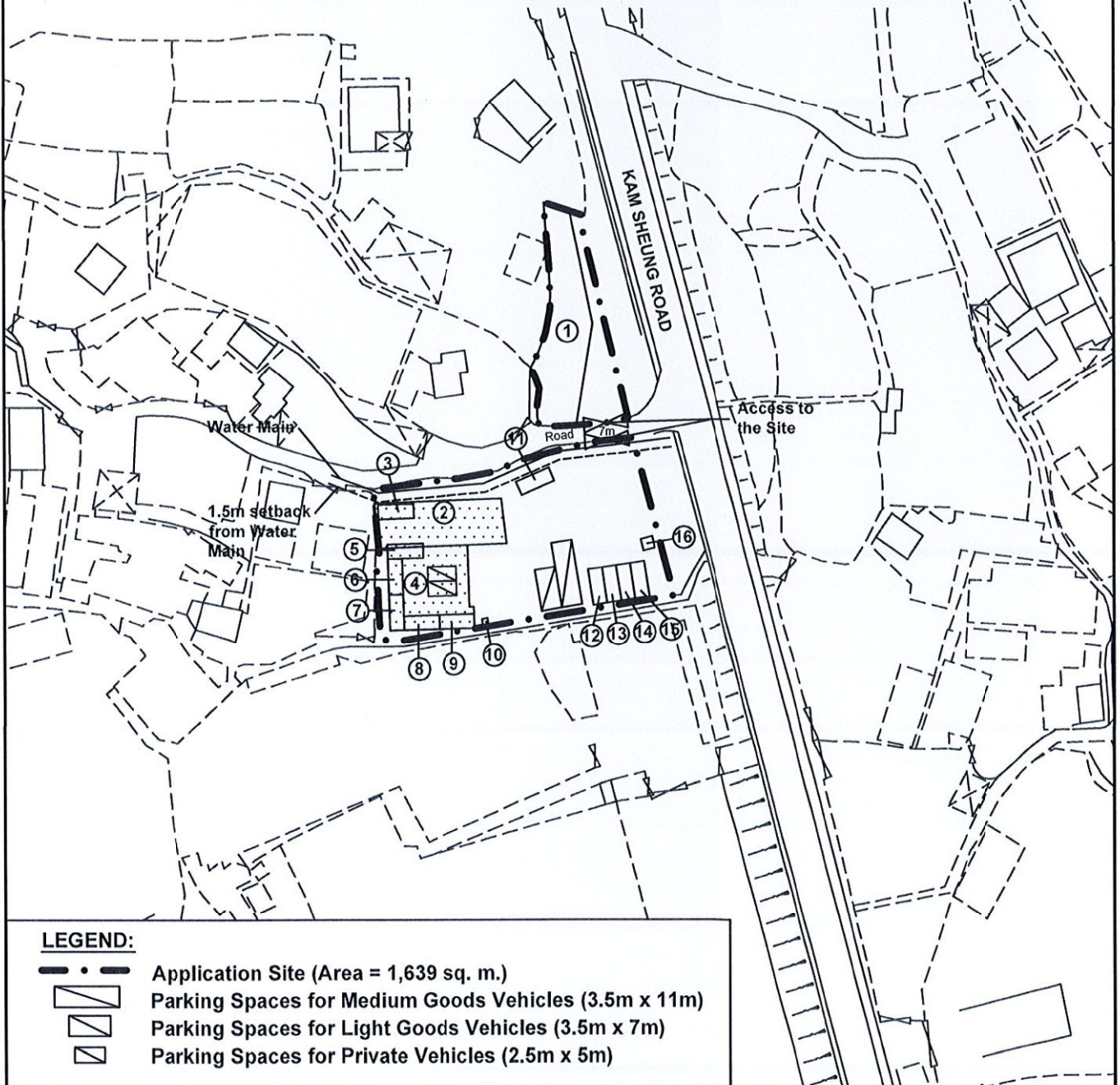
Date: 26.6.2017

(摘錄自申請人於 24.8.2017 呈交的申請書)  
 (Extract from Applicant's  
 Submission of 24.8.2017)

參考編號  
 REFERENCE No.  
 A/YL-KTS/754

繪圖 DRAWING  
 A-1

Structure No.	Uses	No. of Storey	Covered Area(m <sup>2</sup> )	Floor Area(m <sup>2</sup> )	Height(m)
1	G/F: 2 Staff Parking Spaces and Site Office 1/F: Site Office	2	246	492	6
2	Canopy for Ancillary Storage of Tools/Equipment	1	166	166	5
3	Site Office (under the canopy)	1	15	15	2.5
4	Canopy	1	196	196	5.5
5	Site Office (under the canopy)	2	15	30	5
6	Site Office (under the canopy)	2	15	30	5
7	Site Office (under the canopy)	2	15	30	5
8	Site Office (under the canopy)	2	15	30	5
9	Site Office (under the canopy)	2	15	30	5
10	Storeroom	1	1	1	2
11	Washroom	1	15	15	2.5
12	Storeroom for Tools/Equipment	1	15	15	2.5
13	Storeroom for Tools/Equipment	2	15	30	5
14	Storeroom for Tools/Equipment	2	15	30	5
15	Storeroom for Tools/Equipment	2	15	30	5
16	Storeroom	1	4	4	2.5



**LEGEND:**

- Application Site (Area = 1,639 sq. m.)
- Parking Spaces for Medium Goods Vehicles (3.5m x 11m)
- Parking Spaces for Light Goods Vehicles (3.5m x 7m)
- Parking Spaces for Private Vehicles (2.5m x 5m)



Top Bright Consultants Ltd.

Drawing No. :TB/17/456/05

**Layout Plan**

Lot 455RP(Part) in DD106, Kam Sheung Road,  
Kam Tin, Yuen Long, N.T.

**FIGURE 5A**

FOR IDENTIFICATION PURPOSE

Date: 26.9.2017

Scale: 1 : 1 000

(摘錄自申請人於 27.9.2017 提交的進一步資料)  
(Extract from Applicant's Further  
Information Submitted on 27.9.2017)

參考編號

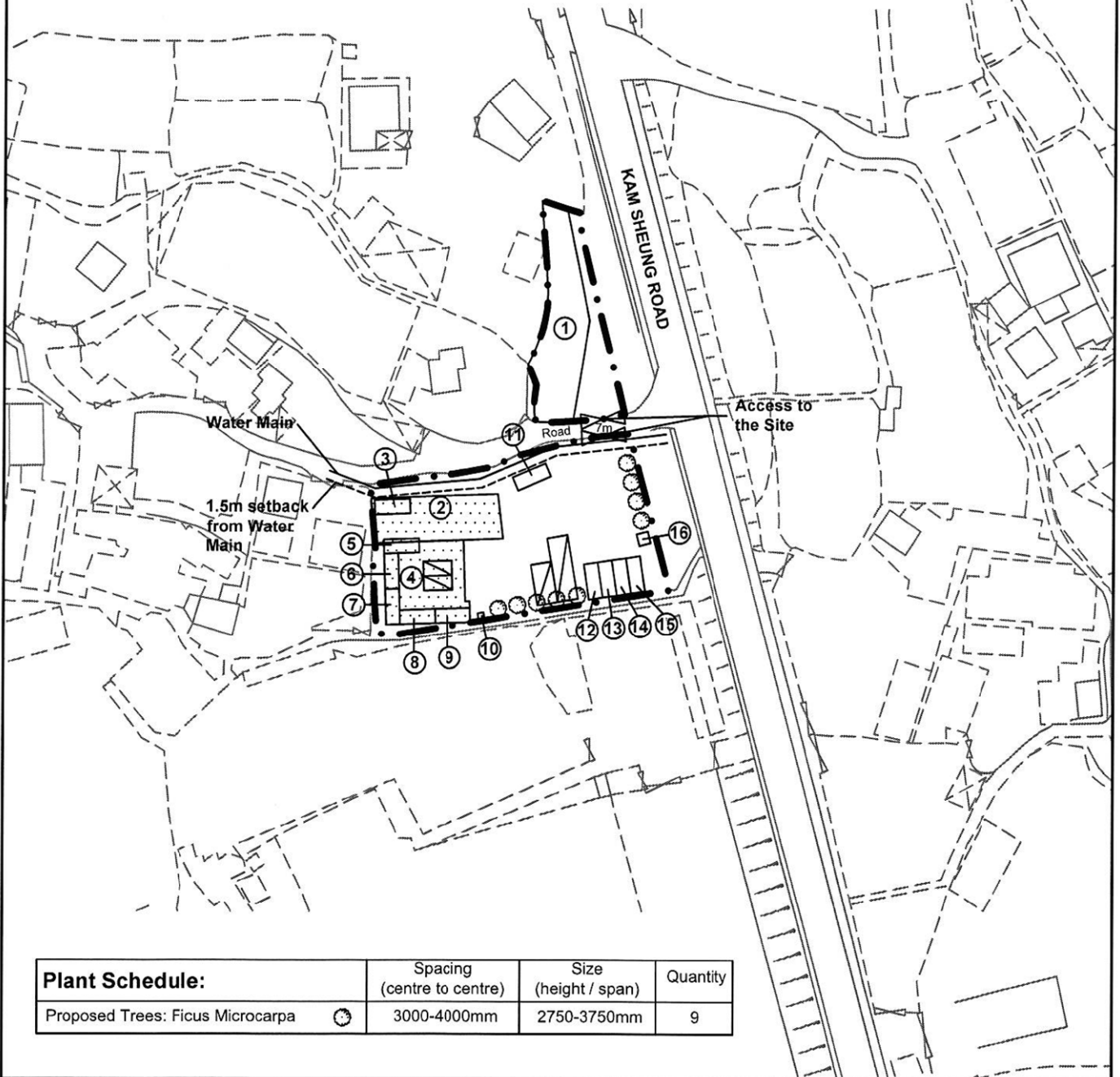
REFERENCE No.


A/YL-KTS/754

繪圖 DRAWING

A-2

Structure No.	Uses	No. of Storey	Covered Area(m <sup>2</sup> )	Floor Area(m <sup>2</sup> )	Height(m)
1	G/F: 2 Staff Parking Spaces and Site Office 1/F: Site Office	2	246	492	6
2	Canopy for Ancillary Storage of Tools/Equipment	1	166	166	5
3	Site Office (under the canopy)	1	15	15	2.5
4	Canopy	1	196	196	5.5
5	Site Office (under the canopy)	2	15	30	5
6	Site Office (under the canopy)	2	15	30	5
7	Site Office (under the canopy)	2	15	30	5
8	Site Office (under the canopy)	2	15	30	5
9	Site Office (under the canopy)	2	15	30	5
10	Storeroom	1	1	1	2
11	Washroom	1	15	15	2.5
12	Storeroom for Tools/Equipment	1	15	15	2.5
13	Storeroom for Tools/Equipment	2	15	30	5
14	Storeroom for Tools/Equipment	2	15	30	5
15	Storeroom for Tools/Equipment	2	15	30	5
16	Storeroom	1	4	4	2.5



Plant Schedule:	Spacing (centre to centre)	Size (height / span)	Quantity
Proposed Trees: Ficus Microcarpa 	3000-4000mm	2750-3750mm	9



Top Bright Consultants Ltd.

Drawing No. :TB/17/456/06

## Landscape Proposal

Lot 455RP(Part) in DD106, Kam Sheung Road,  
Kam Tin, Yuen Long, N.T.

## FIGURE 6

FOR IDENTIFICATION PURPOSE

Date: 26.6.2017

Scale: 1 : 1 000

(摘錄自申請人於 18.1.2018 呈交的進一步資料)  
(Extract from Applicant's Further  
Information Submitted on 18.1.2018)

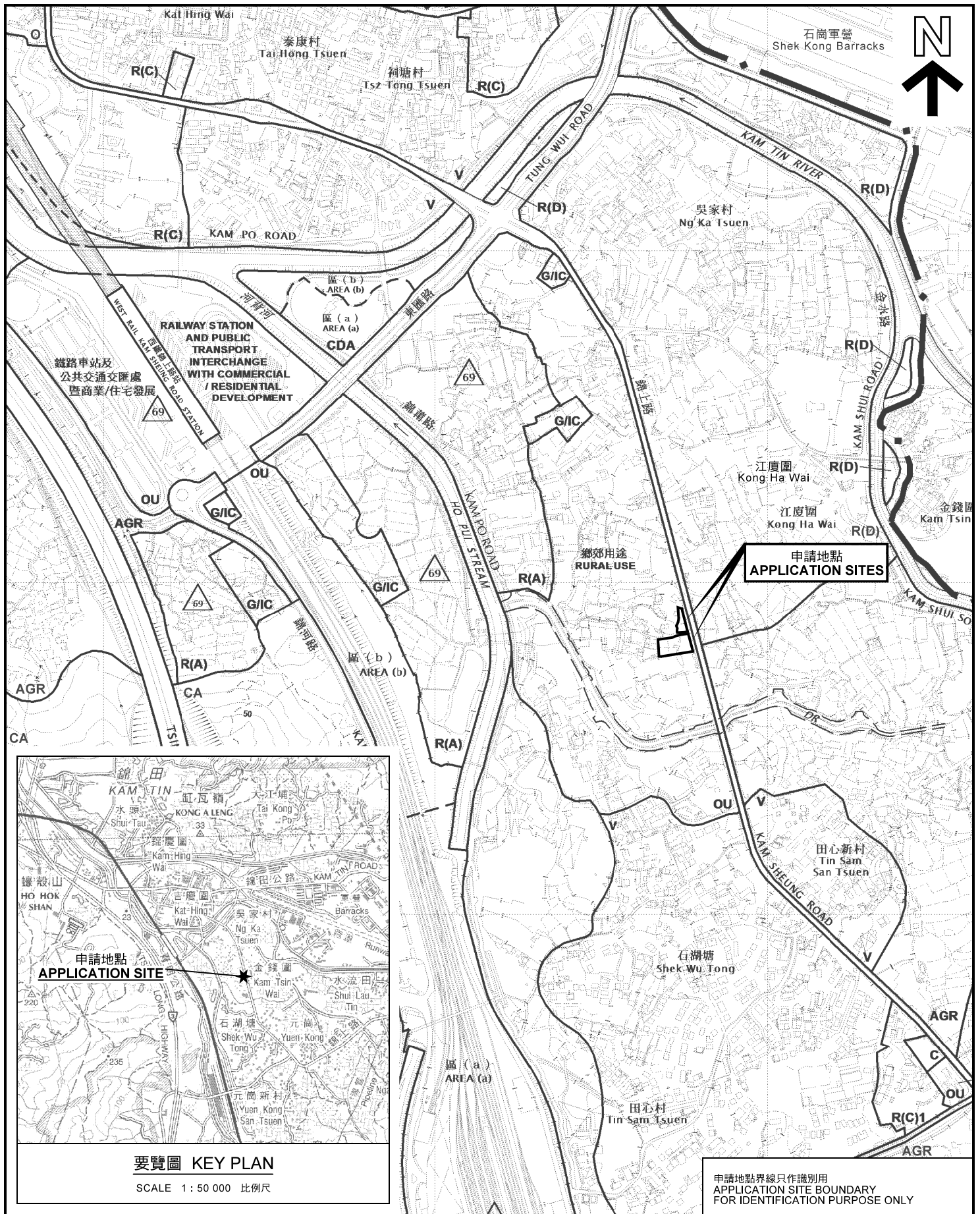
參考編號

REFERENCE No.

A/YL-KTS/754

繪圖 DRAWING

A-3



要覽圖 KEY PLAN

SCALE 1 : 50 000 比例尺

位置圖 LOCATION PLAN

臨時渠務及排污工程地盤辦公室及服務倉庫(為期3年)  
 元朗錦田錦上路丈量約份第106約地段第455號餘段(部分)  
 TEMPORARY SITE OFFICE AND SERVICE DEPOT FOR  
 DRAINAGE AND SEWERAGE WORKS FOR A PERIOD OF 3 YEARS  
 LOT 455RP (PART) IN D.D.106 AND, KAM SHEUNG ROAD,  
 KAM TIN, YUEN LONG

SCALE 1 : 7 500 比例尺  
 米 100 0 100 200 300 米  
 METRES

規劃署  
 PLANNING  
 DEPARTMENT



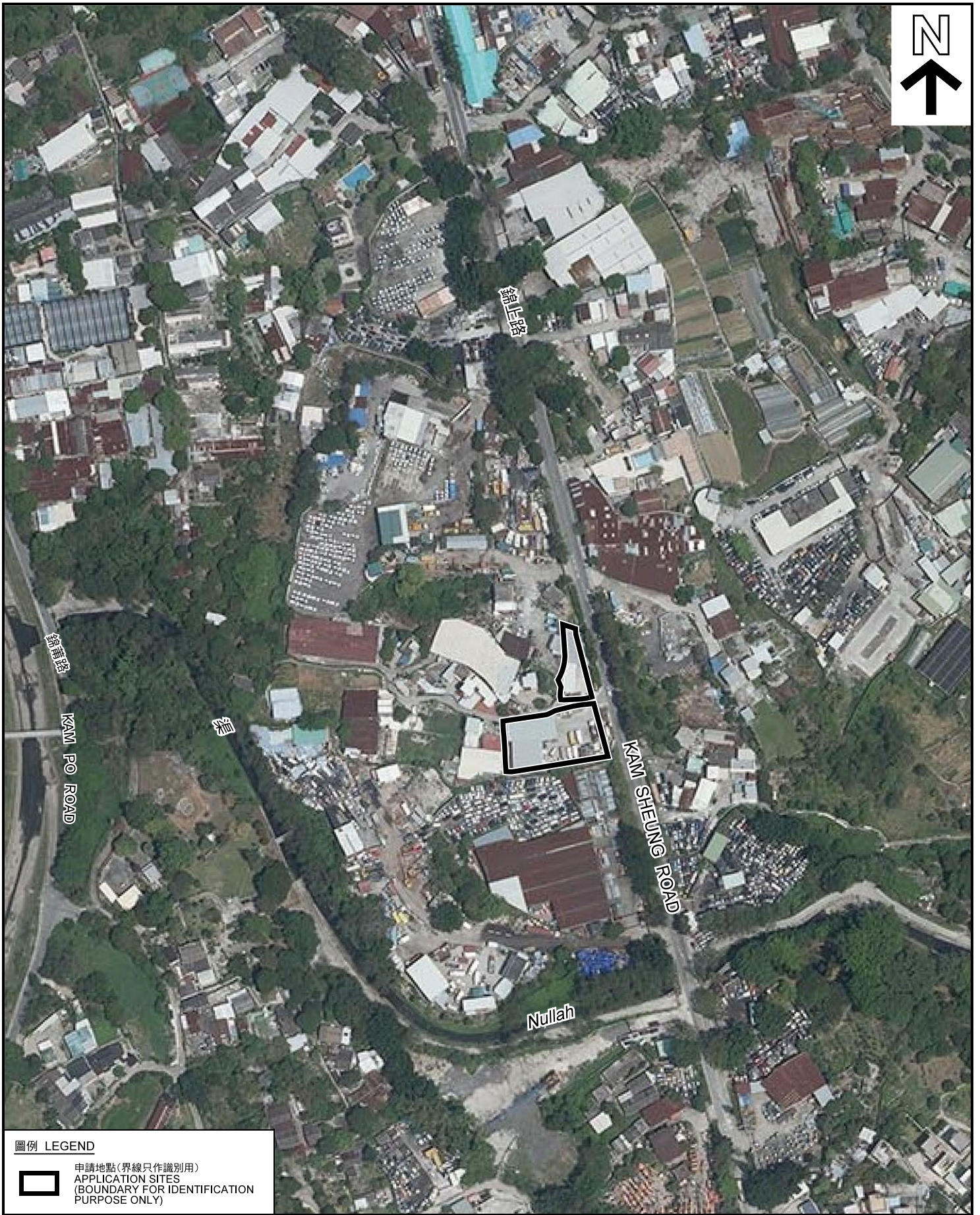
參考編號  
 REFERENCE No.  
 A/YL-KTS/754

圖 PLAN  
 A-1

本摘要圖於2018年1月17日擬備，  
 所根據的資料為於2017年11月3日  
 展示的分區計劃大綱圖編號 S/YL-KTS/14  
 EXTRACT PLAN PREPARED ON 17.1.2018  
 BASED ON OUTLINE ZONING PLAN No.  
 S/YL-KTS/14 EXHIBITED ON 3.11.2017

申請地點界線只作識別用  
 APPLICATION SITE BOUNDARY  
 FOR IDENTIFICATION PURPOSE ONLY





圖例 LEGEND



申請地點(界線只作識別用)  
APPLICATION SITES  
(BOUNDARY FOR IDENTIFICATION  
PURPOSE ONLY)

本摘要圖於2018年1月5日擬備，所根據的資料為地政總署於2017年4月2日拍得的航攝照片編號 E016591C  
EXTRACT PLAN PREPARED ON 5.1.2018  
BASED ON AERIAL PHOTO No.  
E016591C TAKEN ON 2.4.2017  
BY LANDS DEPARTMENT

航攝照片 AERIAL PHOTO

臨時渠務及排污工程地盤辦公室及服務倉庫(為期3年)  
元朗錦田錦上路丈量約份第106約地段第455號餘段(部分)  
TEMPORARY SITE OFFICE AND SERVICE DEPOT FOR  
DRAINAGE AND SEWERAGE WORKS FOR A PERIOD OF 3 YEARS  
LOT 455RP (PART) IN D.D.106 AND, KAM SHEUNG ROAD,  
KAM TIN, YUEN LONG

規劃署  
PLANNING  
DEPARTMENT



參考編號  
REFERENCE No.  
A/YL-KTS/754

圖 PLAN  
A-3



申請地點界線只作識別用 APPLICATION SITE BOUNDARY FOR IDENTIFICATION PURPOSE ONLY

**實地照片 SITE PHOTOS**

臨時渠務及排污工程地盤辦公室及服務倉庫(為期3年)  
 元朗錦田錦上路丈量約份第106約地段第455號餘段(部分)  
 TEMPORARY SITE OFFICE AND SERVICE DEPOT FOR  
 DRAINAGE AND SEWERAGE WORKS FOR A PERIOD OF 3 YEARS  
 LOT 455RP (PART) IN D.D. 106 AND, KAM SHEUNG ROAD,  
 KAM TIN, YUEN LONG

規劃署  
**PLANNING  
 DEPARTMENT**



參考編號  
 REFERENCE No.  
**A/YL-KTS/754**

圖 PLAN  
**A-4a**

本圖於2018年1月12日擬備，所根據的資料為攝於2017年9月1日的實地照片  
 PLAN PREPARED ON 12.1.2018  
 BASED ON SITE PHOTOS  
 TAKEN ON 1.9.2017



4

申請地點  
APPLICATION SITES



5

申請地點  
APPLICATION SITE



6

申請地點  
APPLICATION SITE

申請地點界線只作識別用 APPLICATION SITE BOUNDARY FOR IDENTIFICATION PURPOSE ONLY

**實地照片 SITE PHOTOS**

本圖於2018年1月5日擬備，所根據的資料為攝於2017年9月1日的實地照片  
PLAN PREPARED ON 5.1.2018  
BASED ON SITE PHOTOS  
TAKEN ON 1.9.2017

臨時渠務及排污工程地盤辦公室及服務倉庫(為期3年)  
元朗錦田錦上路丈量約份第106約地段第455號餘段(部分)  
TEMPORARY SITE OFFICE AND SERVICE DEPOT FOR  
DRAINAGE AND SEWERAGE WORKS FOR A PERIOD OF 3 YEARS  
LOT 455RP (PART) IN D.D.106 AND, KAM SHEUNG ROAD,  
KAM TIN, YUEN LONG

規劃署  
PLANNING  
DEPARTMENT



參考編號  
REFERENCE No.  
AYL-KTS/754

圖 PLAN  
A-4b