

WIP
May 2019

Application Site

Access Road

FANLING HIGHWAY

WIP
May
2019

WIP
May
2019

WIP
May 2019

OS

PANHO SERVICE ROAD WEST

WIP
May 2019

Extracted From Approved Kau Lung Hang Outline Zoning Plan No. S/NE-KLH/11

Not to scale

Location Plan

Goldrich Planners &
Surveyors Ltd.

January 2020

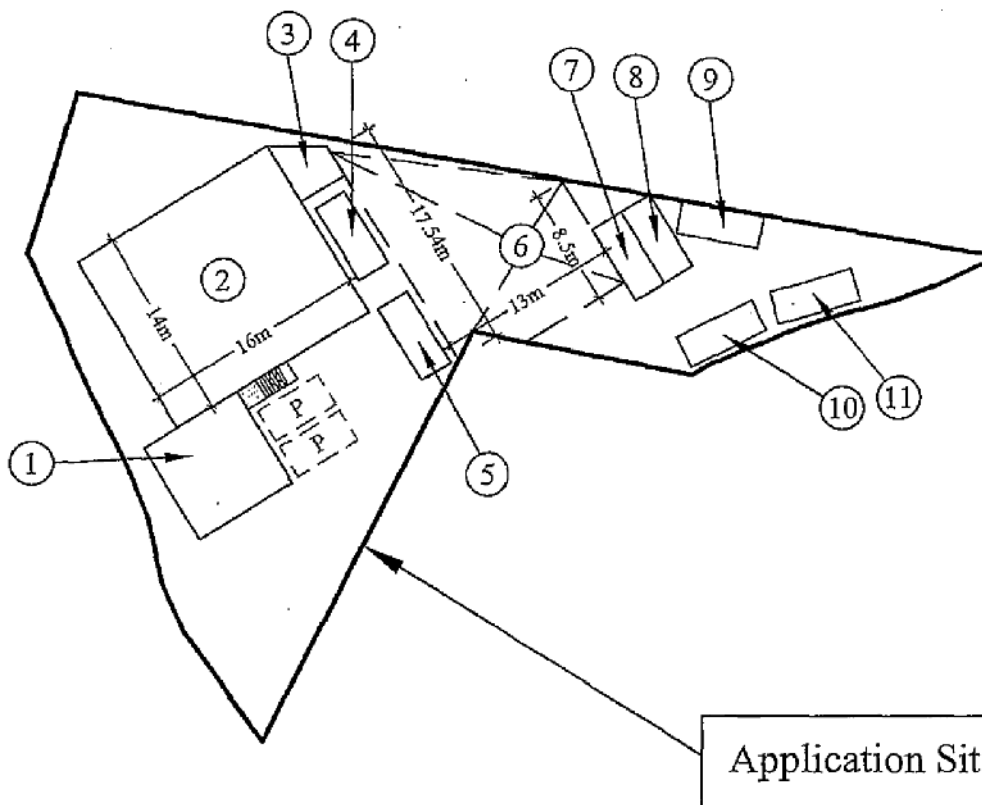
Lots 617 S.B RP, 618 S.B ss. 1, 622 S.B RP (part)
in D. D. 9, Nam Wa Po, Kau Lung Hang, Tai Po

Plan 1
(P9039)

參考編號
REFERENCE No. A/NE-KLH/584

繪圖 DRAWING A-1

(來源：申請人建議書)
(SOURCE: APPLICANT'S SUBMISSION PLAN)



Legend:



Private Car Parking Space (5m(L) x 2.5m(W))

Site Area: 1,226m² (about)

No.	Use	Covered Area	Floor Area	Height	Storey
1	Open Shed (G/F) and office (1/F)	60.1m ²	120.2m ²	5m	2
2	Warehouse	224m ²	224m ²	5.5m	1
3	Open platform	12.9m ²	12.9m ²	5.5m	1
4	Container storage (G/F) and Container office (1/F)	14.4m ²	28.8m ²	5.2m	2
5	Container storage (2 Storeys)	14.4m ²	28.8m ²	5.2m	2
6	Open shed	171.2m ²	171.2m ²	5.5m	1
7	Container storage (2 Storeys)	14.4m ²	28.8m ²	5.2m	2
8	Container storage (2 Storeys)	14.4m ²	28.8m ²	5.2m	2
9	Open Shed	14.4m ²	14.4m ²	2.6m	1
10	Container storage	14.4m ²	14.4m ²	2.6m	1
11	Container staff lounge	14.4m ²	14.4m ²	2.6m	1
Total		569.0m ²	686.7m ²		

	Layout Plan	Goldrich Planners & Surveyors Ltd.
February 2020	Lots 617 S.B RP, 618 S.B ss. 1, 622 S.B RP (part) in D. D. 9, Nam Wa Po, Kau Lung Hang, Tai Po	Plan 3 (P9039)

參考編號

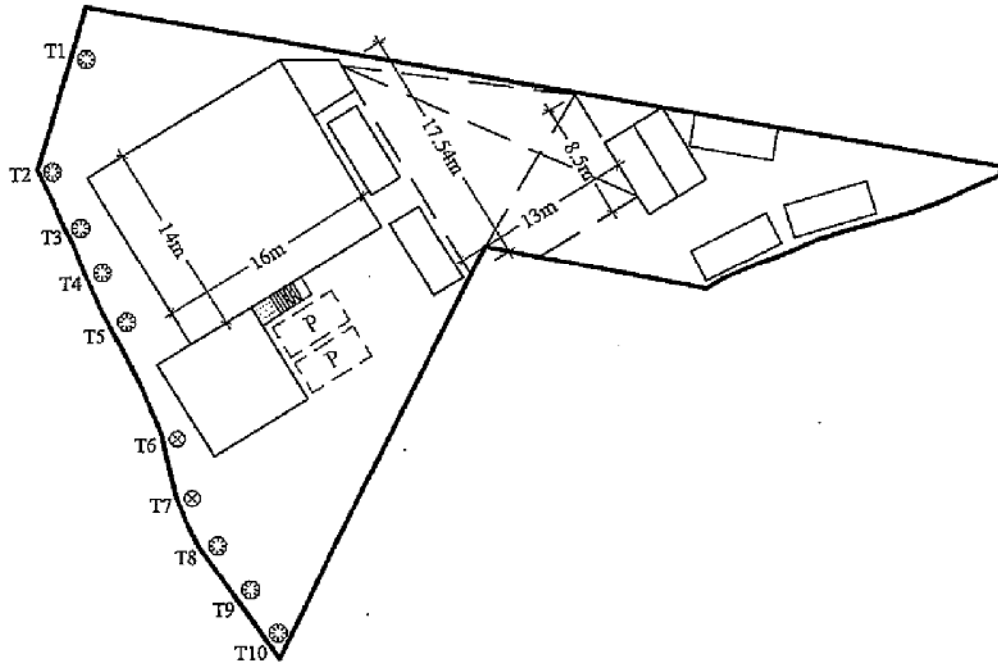
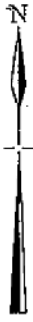
REFERENCE No.

A/NE-KLH/584

繪圖 DRAWING A-2

(來源：申請人建議書)

(SOURCE: APPLICANT'S SUBMISSION PLAN)



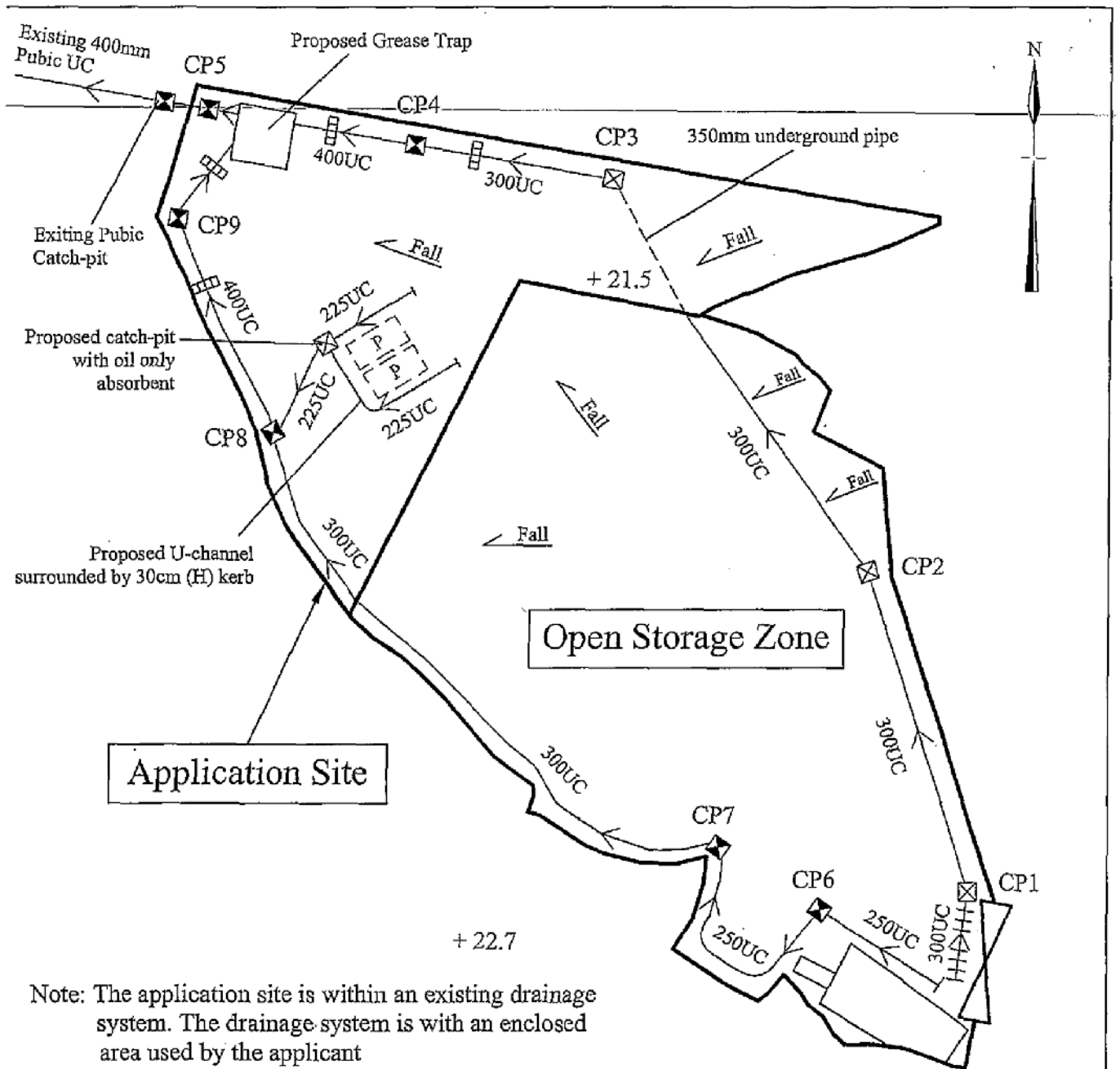
Legend:

[P] Private Car Parking Space (5m(L) x 2.5m(W))

	Spacing (Centre to Centre)	Min. Size (Height)	Quantity
⊗ Existing Ficus benjamina (垂葉榕)	4m	2.75	8
⊗ Existing Michelia x alba (白蘭)	4m	2.75	2
		Total	10

	Tree Perservation and Landscape Proposal	Goldrich Planners & Surveyors Ltd.
February 2020	Lots 617 S.B RP, 618 S.B ss. 1, 622 S.B RP (par) in D. D. 9, Nam Wa Po, Kau Lung Hang, Tai Po	Plan 4 (P9039)

參考編號 REFERENCE No. A/NE-KLH/584	繪圖 DRAWING A-3
------------------------------------	----------------



Note: The application site is within an existing drainage system. The drainage system is with an enclosed area used by the applicant

Legend

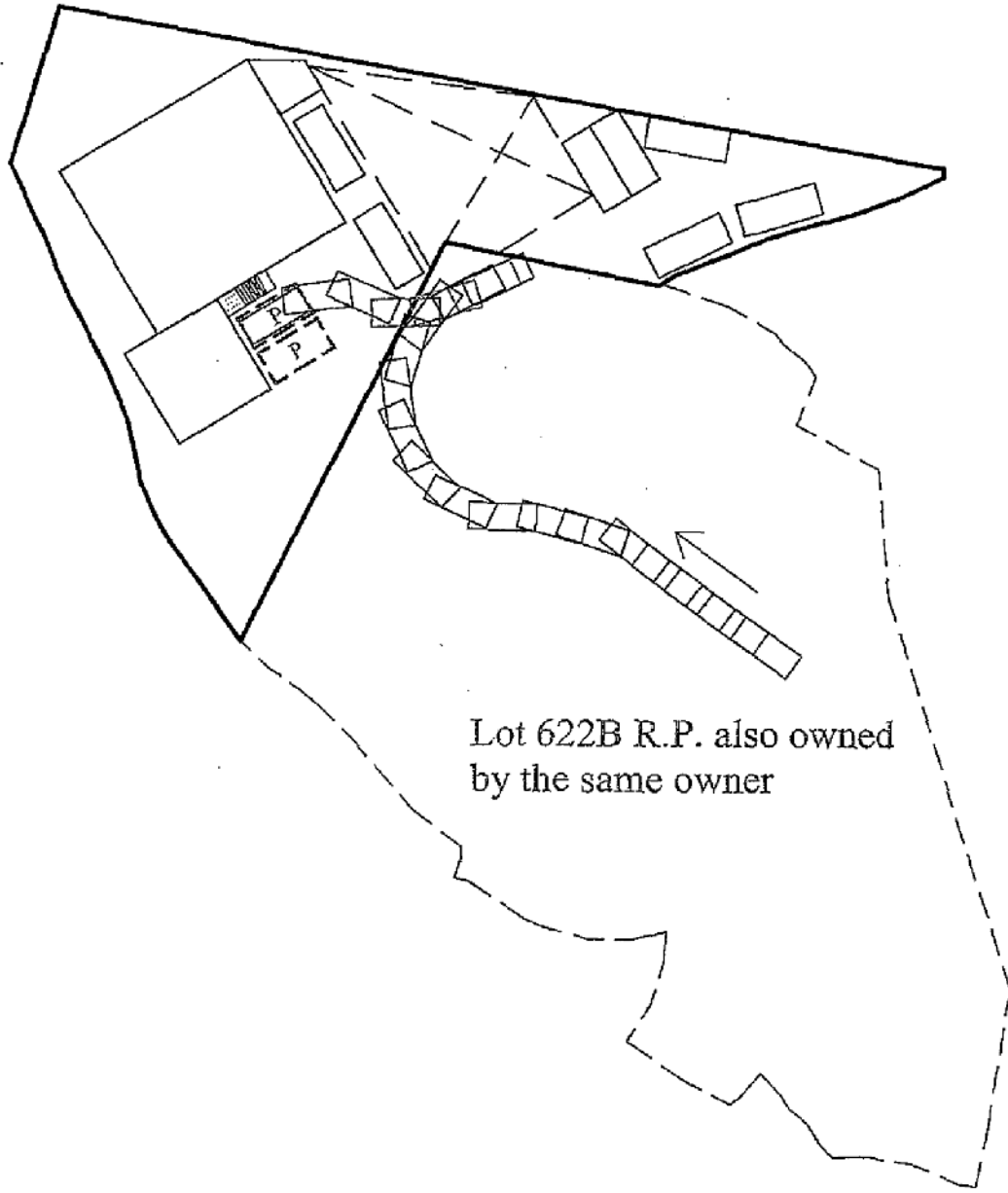
- Existing Catch-pit
- Proposed Catch-pit
- Iron Bar Screen
- Existing U-Channel
- Existing U-Channel with C.I. Cover

Catchpit No.	G.L. (mP.D.)	I.L. (mP.D.)
CP1	+22.7	+22.32
CP2	+22.7	+21.70
CP3	+22.7	+21.20
CP4	+21.5	+21.02
CP5	+21.5	+20.84
CP6	+21.5	+22.33
CP7	+21.5	+22.11
CP8	+21.5	+21.20
CP9	+22.0	+20.99

February 2020	Revised Drainage Proposal Lots 617 S.B RP, 618 S.B ss. 1, 622 S.B RP (part) in D. D. 9, Nam Wa Po, Kau Lung Hang, Tai Po	Goldrich Planners & Surveyors Ltd. Plan 5a (P9039)
----------------------	---	---

參考編號 REFERENCE No. A/NE-KLH/584	繪圖 DRAWING A-4
---	-----------------------

(來源：申請人建議書)
(SOURCE: APPLICANT'S SUBMISSION PLAN)



Lot 622B R.P. also owned
by the same owner

Legend:



Private Car Parking Space (5m(L) x 2.5m(W))

Site Area: 1,226m² (about)

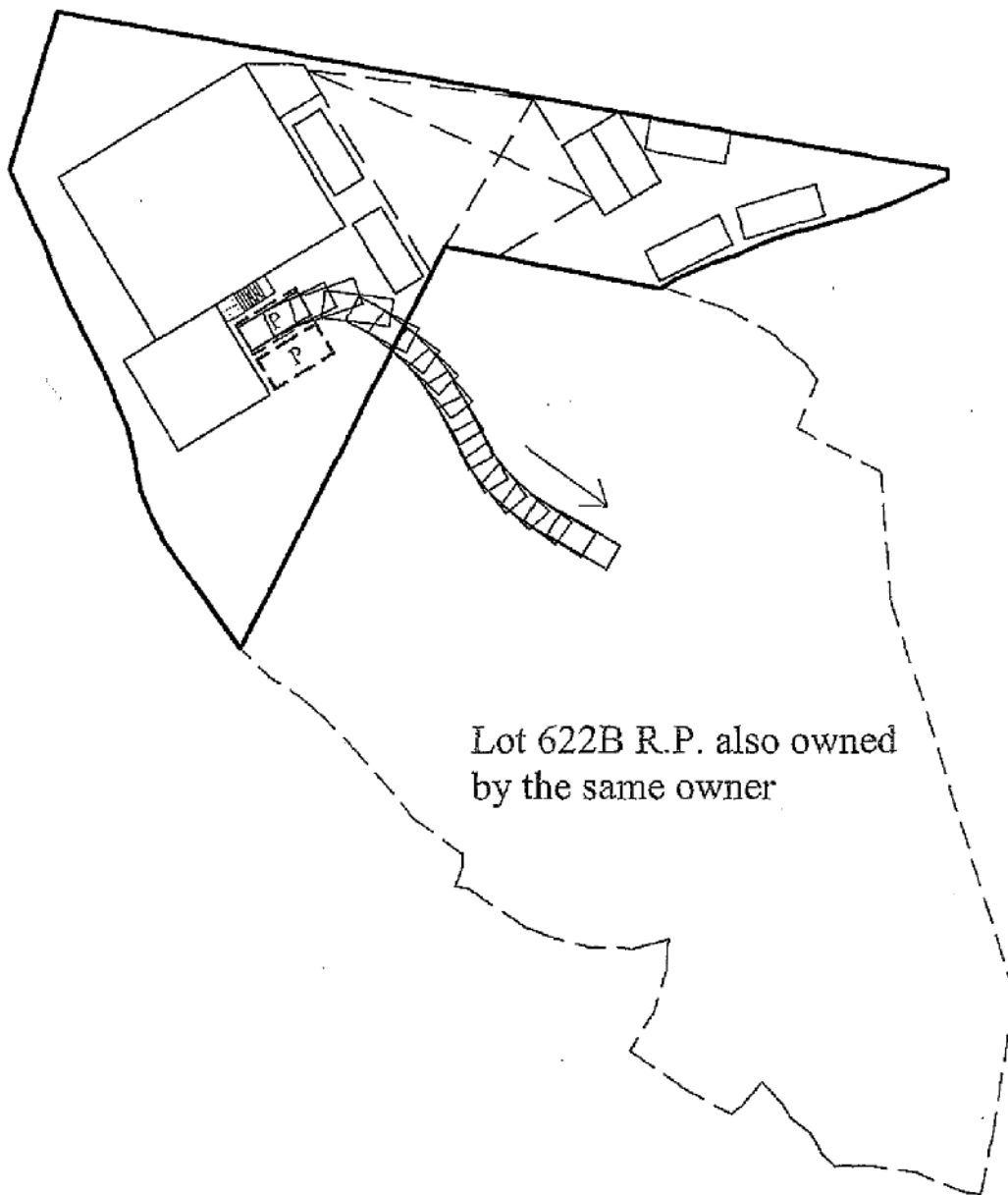
	Swept Path Analysis (Private Car in)	Goldrich Planners & Surveyors Ltd.
February 2020	Lots 617 S.B RP, 618 S.B ss. 1, 622 S.B RP (part) in D. D. 9, Nam Wa Po, Kau Lung Hang, Tai Po	Plan 6.1 (P9039)

參考編號
REFERENCE No.

A/NE-KLH/584

繪圖 DRAWING A-5

(來源 : 申請人建議書)
(SOURCE : APPLICANT'S SUBMISSION PLAN)



Legend:



Private Car Parking Space (5m(L) x 2.5m(W))

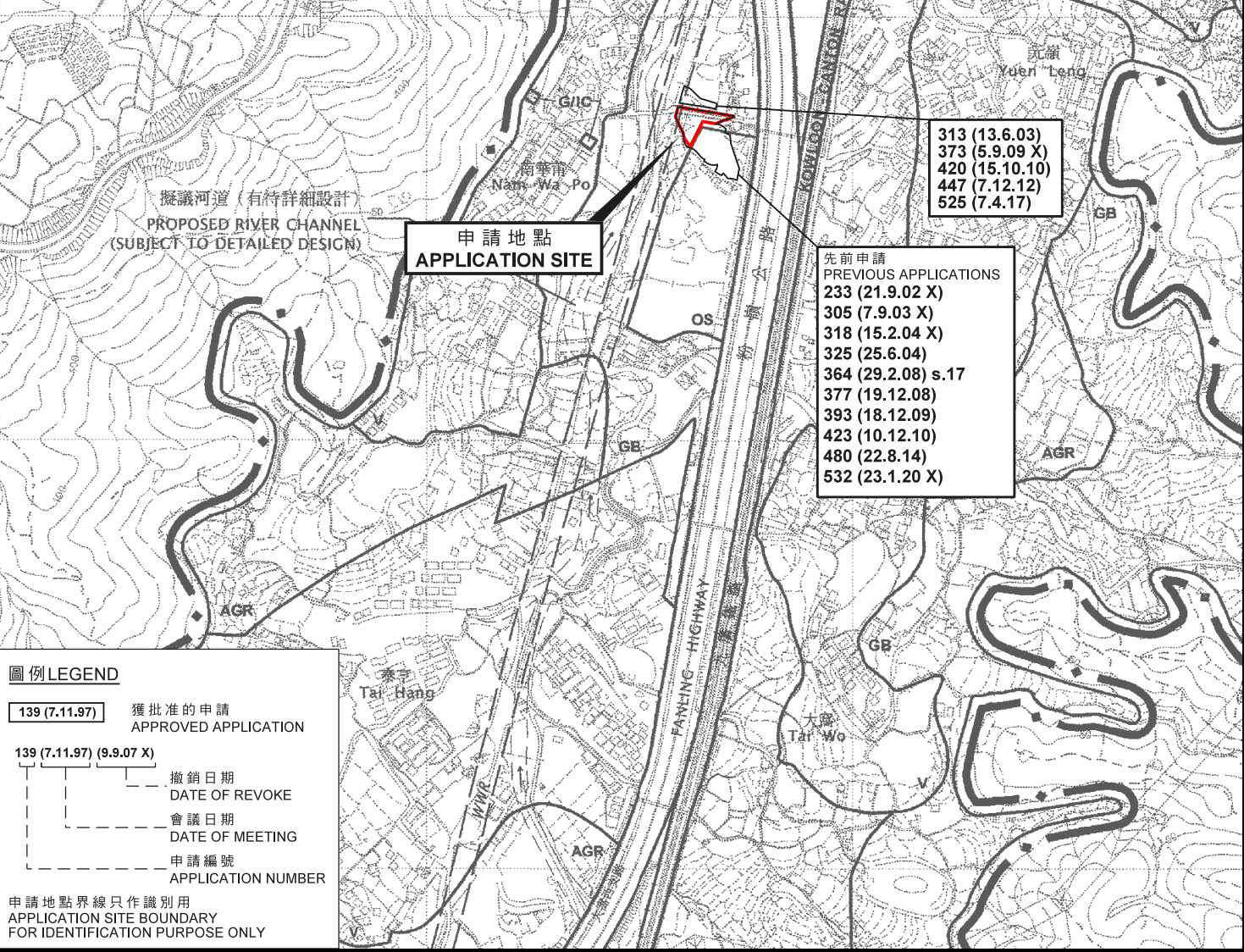
Site Area: 1,226m² (about)

	Swept Path Analysis (Private Car Out)	Goldrich Planners & Surveyors Ltd.
February 2020	Lots 617 S.B RP, 618 S.B ss. 1, 622 S.B RP (part) in D. D. 9, Nam Wa Po, Kau Lung Hang, Tai Po	Plan 6.2 (P9039)

參考編號
REFERENCE No. A/NE-KLH/584

繪圖 DRAWING A-6

(來源 : 申請人建議書)
(SOURCE : APPLICANT'S SUBMISSION PLAN)



圖例 LEGEND

139 (7.11.97)	獲批准的申請 APPROVED APPLICATION
139 (7.11.97) (9.9.07 X)	撤銷日期 DATE OF REVOKE
	會議日期 DATE OF MEETING
	申請編號 APPLICATION NUMBER

申請地點界線只作識別用
APPLICATION SITE BOUNDARY
FOR IDENTIFICATION PURPOSE ONLY

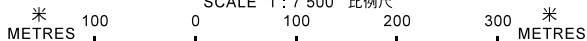
位置圖 LOCATION PLAN

臨時貨倉及附屬辦公室 (為期三年)

新界大埔九龍坑南華莆丈量約份第9約地段第617號B分段餘段、
第618號B分段第1小分段及第622號B分段餘段(部分)
TEMPORARY WAREHOUSE WITH ANCILLARY OFFICE
FOR A PERIOD OF 3 YEARS

LOTS 617 S.B RP, 618 S.B ss.1 AND 622 S.B RP (PART) IN D.D. 9,
NAM WA PO, KAU LUNG HANG, TAI PO, NEW TERRITORIES

SCALE 1 : 7 500 比例尺



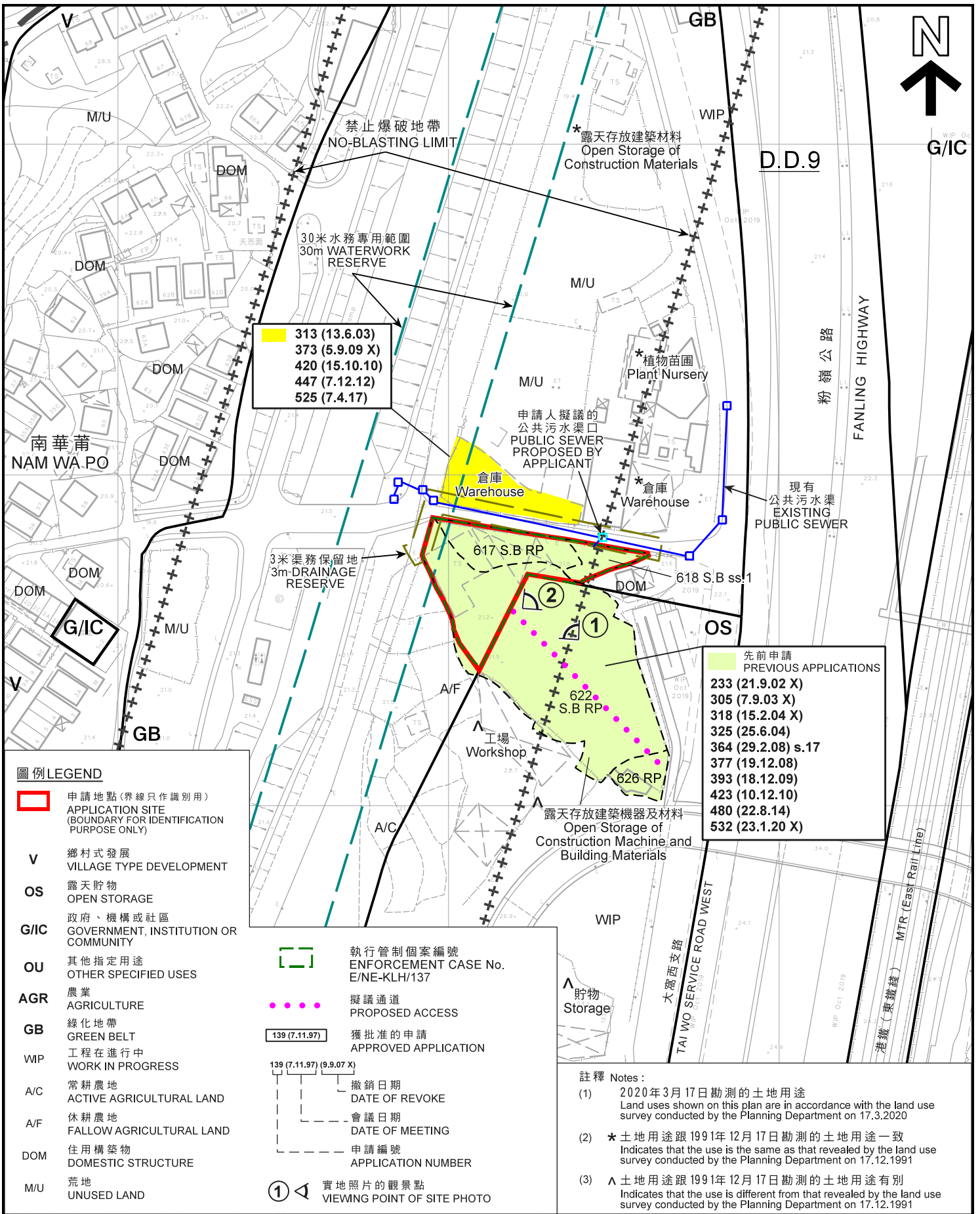
規劃署
PLANNING
DEPARTMENT



參考編號
REFERENCE No.
A/NE-KLH/584

圖 PLAN
A-1

本摘要圖於2020年7月3日擬備，
所根據的資料為於2006年10月17日核准的
分區計劃大綱圖編號S/NE-KLH/11
EXTRACT PLAN PREPARED ON 3.7.2020
BASED ON OUTLINE ZONING PLAN
No. S/NE-KLH/11 APPROVED ON 17.10.2006



平面圖 SITE PLAN

本摘要圖於2020年7月3日擬備，
所根據的資料為測量圖編號
3-SW-18C、18D、23A及23B
EXTRACT PLAN PREPARED ON 3.7.2020
BASED ON SURVEY SHEETS No.
3-SW-18C, 18D 23A & 23B

臨時貨倉及附屬辦公室 (為期三年)
新界大埔九龍坑南華莆丈量約份第9約地段第617號B分段餘段、
第618號B分段第1小分段及第622號B分段餘段 (部分)
TEMPORARY WAREHOUSE WITH ANCILLARY OFFICE
FOR A PERIOD OF 3 YEARS
LOTS 617 S.B RP, 618 S.B ss.1 AND 622 S.B RP (PART) IN D.D. 9,
NAM WA PO, KAU LUNG HANG, TAI PO, NEW TERRITORIES

SCALE 1:1 500 比例尺
米 METRES 25 0 25 50 米 METRES

**規劃署
PLANNING
DEPARTMENT**



參考編號
REFERENCE No.
A/NE-KLH/584

圖 **PLAN
A-2**

S/NE-KLH/11 沒有覆蓋的範圍
AREA NOT COVERED BY
S/NE-KLH/11



S/NE-KLH/11

G/IC

G/IC

南華莆
NAM WA PO

大窩西支路

粉嶺公路

OU

AGR

MTR (East Rail Line)

GB

TAI WO SERVICE ROAD WEST

FANLING HIGHWAY

港鐵 (東鐵綫)

GB

圖例 LEGEND

 申請地點 (界線只作識別用)
APPLICATION SITE
(BOUNDARY FOR IDENTIFICATION
PURPOSE ONLY)

航攝照片 AERIAL PHOTO

本摘要圖於2020年3月30日擬備，
所根據的資料為地政總署
於2019年9月26日拍得的航攝照片
編號E065130C
EXTRACT PLAN PREPARED ON 30.3.2020
BASED ON AERIAL PHOTO No. E065130C
TAKEN ON 26.9.2019 BY
LANDS DEPARTMENT

臨時貨倉及附屬辦公室 (為期三年)
新界大埔九龍坑南華莆丈量約份第9約地段第617號B分段餘段、
第618號B分段第1小分段及第622號B分段餘段 (部分)
TEMPORARY WAREHOUSE WITH ANCILLARY OFFICE
FOR A PERIOD OF 3 YEARS
LOTS 617 S.B RP, 618 S.B ss.1 AND 622 S.B RP (PART) IN D.D. 9,
NAM WA PO, KAU LUNG HANG, TAI PO, NEW TERRITORIES

規劃署
PLANNING
DEPARTMENT



參考編號
REFERENCE No.
A/NE-KLH/584

圖 PLAN
A-3

1



2



申請地點界線只作識別用
APPLICATION SITE BOUNDARY FOR IDENTIFICATION PURPOSE ONLY

實地照片 SITE PHOTOS

臨時貨倉及附屬辦公室（為期三年）
新界大埔九龍坑南華莆丈量約份第9約地段第617號B分段餘段、
第618號B分段第1小分段及第622號B分段餘段（部分）
TEMPORARY WAREHOUSE WITH ANCILLARY OFFICE
FOR A PERIOD OF 3 YEARS
LOTS 617 S.B RP, 618 S.B ss.1 AND 622 S.B RP (PART) IN D.D. 9,
NAM WA PO, KAU LUNG HANG, TAI PO, NEW TERRITORIES

規劃署
PLANNING
DEPARTMENT



參考編號
REFERENCE No.
A/NE-KLH/584

圖 PLAN
A-4

本圖於2020年3月30日擬備，所根據
的資料為攝於2020年3月17日
的實地照片
PLAN PREPARED ON 30.3.2020 BASED ON
SITE PHOTOS TAKEN ON 17.3.2020