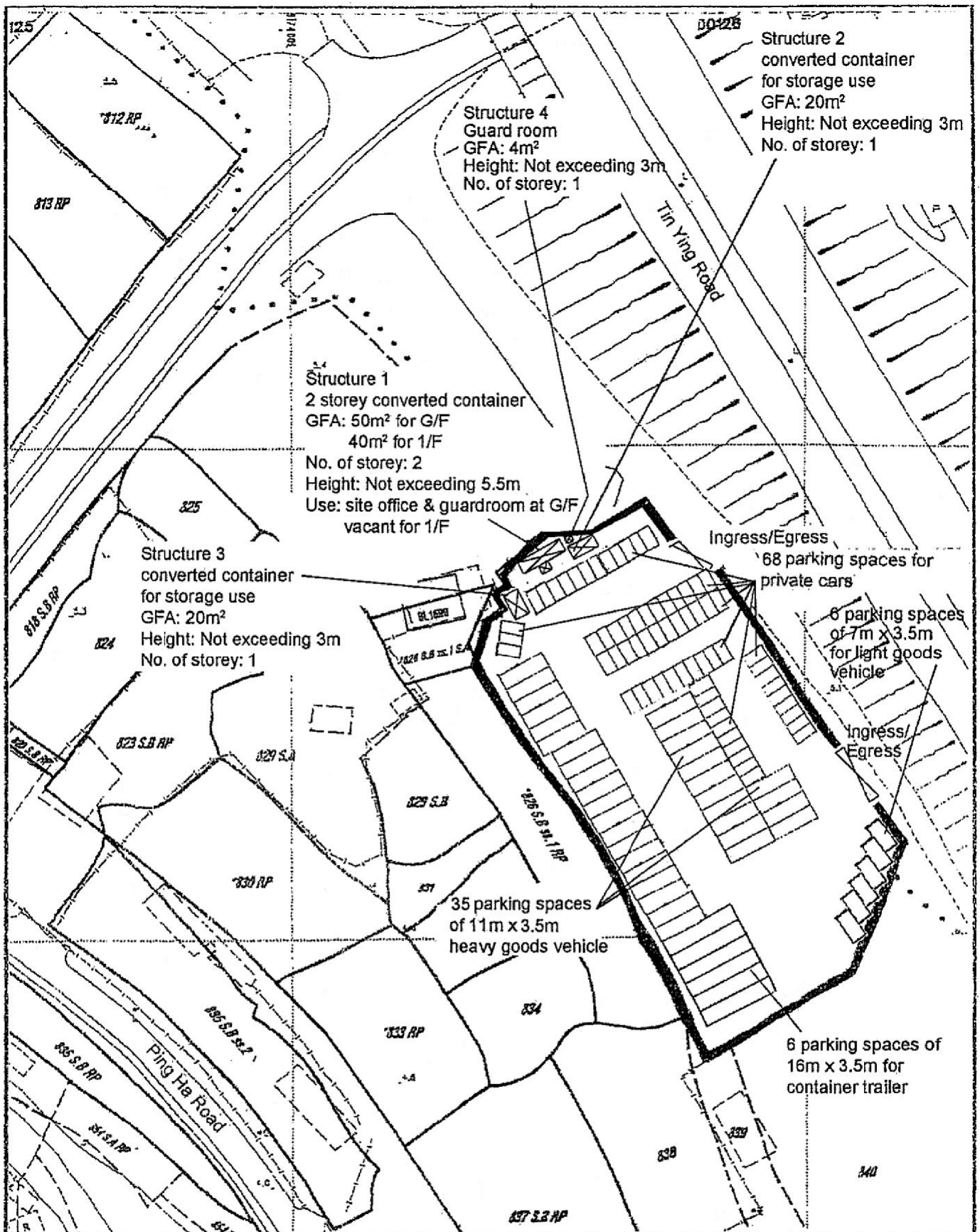


<p>Project 項目名稱: Proposed Temporary Public Vehicle Park for Private Cars, Light Goods Vehicles, Heavy Goods Vehicles & Container Trailers for a Period of 3 Years at Lots 826S.A(Part), 828, 839(Part), 840(Part) & Adjoining Government Land in D.D. 125, Ha Tsuen, Yuen Long, N.T.</p>	<p>Drawing Title 圖名: Location Plan</p>	<p>Remarks 備註: ●●● Vehicular access leading to Ping Ha Road</p>
	<p>Drawing No. 圖號: Figure 2</p>	<p>Scale 比例尺: 4:7500</p>

(摘錄自申請人於 7. 5. 2019 呈交的申請書)
 (Extract from Applicant's Submission of 7.5.2019)

<p>參考編號 REFERENCE No. A/HSK/154</p>	<p>繪圖 DRAWING A-1</p>
--	-----------------------------------

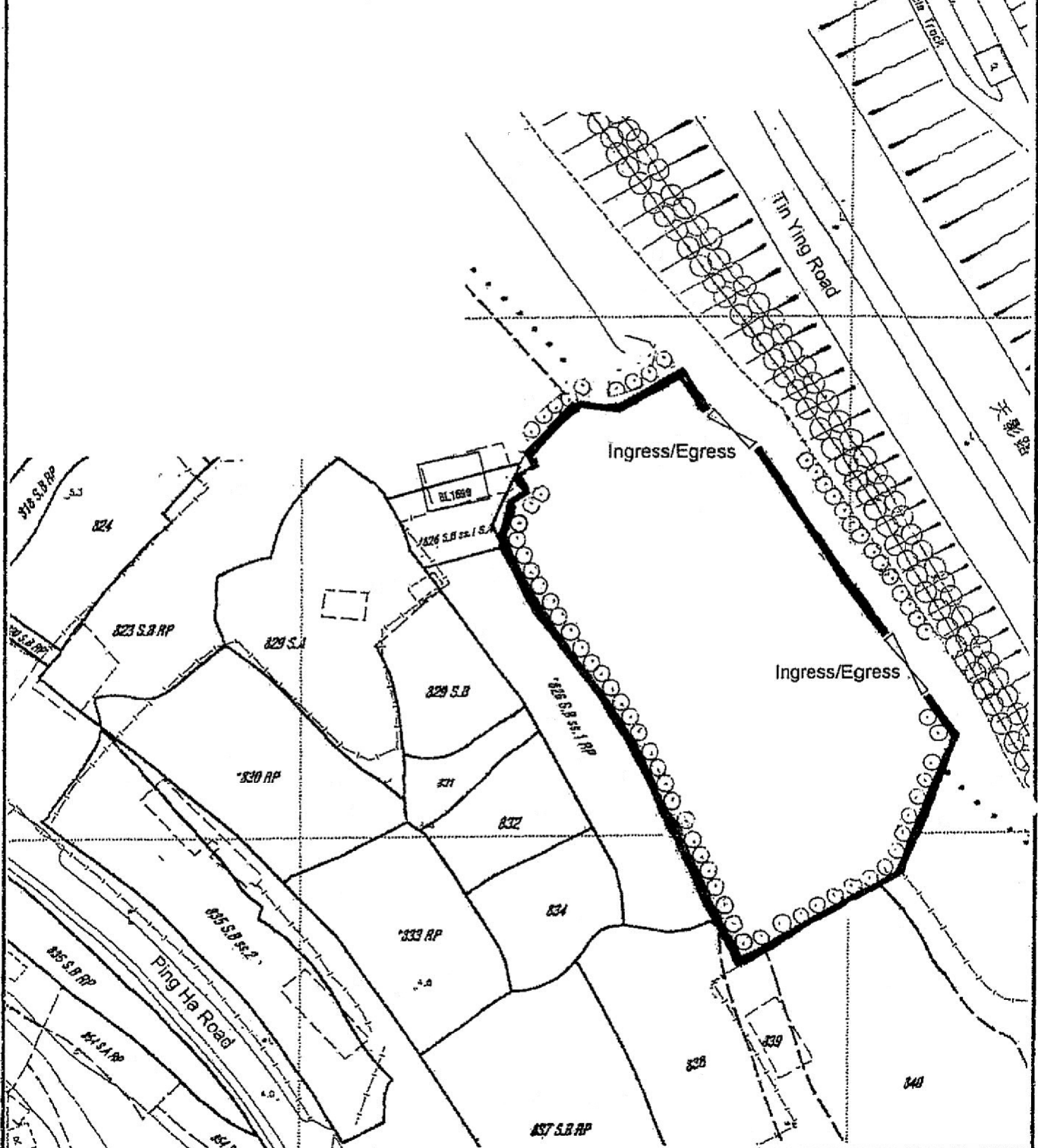


Project 811774 Proposed Temporary Public Vehicle Park for Private Cars, Light Goods Vehicles, Heavy Goods Vehicles & Container Trailers for a Period of 3 Years at Lots 826S.A(Part), 828, 839(Part), 840(Part) & Adjoining Government Land in D.D. 125, Ha Tsuen, Yuen Long, N.T.	Drawing Title 7411: Proposed Layout Plan	Remarks 83.3
	Drawing No. 833C Figure 3	Scale 1/49: 1:1000

(摘錄自申請人於 7.5.2019 呈交的申請書)
 (Extract from Applicant's Submission of 7.5.2019)

參考編號 REFERENCE No. A/HSK/154	繪圖 DRAWING A-2
---	--------------------------

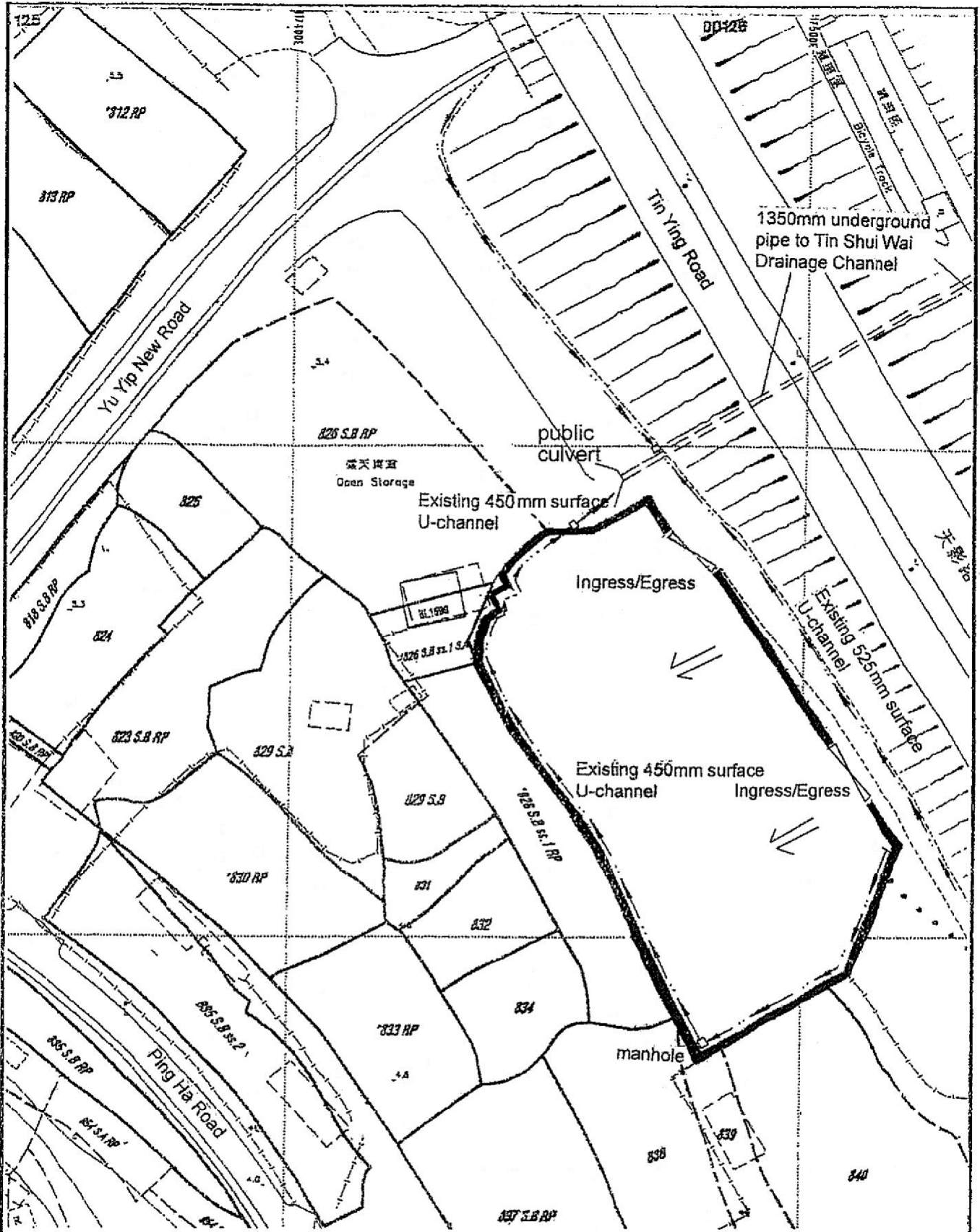
Tree	Approximate Height	Spacing
As-planted ⊙ <i>Ficus microcarpa</i> (Chinese Banyan) to be preserved	3.5m to 5.5m	3m



Project 項目名稱: Proposed Temporary Public Vehicle Park for Private Cars, Light Goods Vehicles, Heavy Goods Vehicles & Container Trailers for a Period of 3 Years at Lots 826S.A(Part), 828, 839(Part), 840(Part) & Adjoining Government Land in D.D. 125, Ha Tsuen, Yuen Long, N.T.	Drawing Title 圖名: Proposed Tree Preservation & Landscape Plan	Remarks 備註: Scale 比例: 1:1000
	Drawing No. 圖號: Figure 4	

(摘錄自申請人於 7. 5. 2019 呈交的申請書)
 (Extract from Applicant's Submission of 7.5.2019)

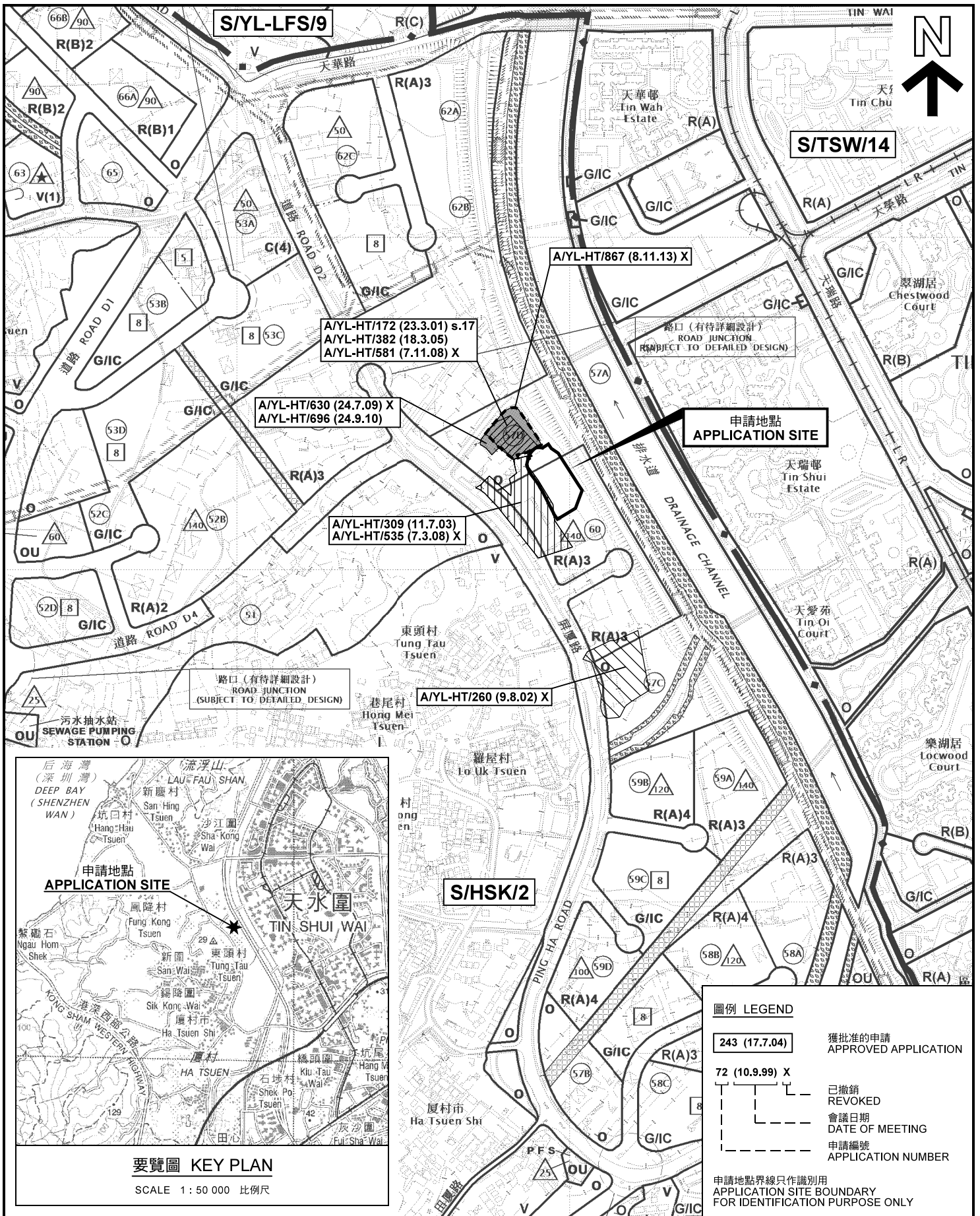
參考編號 REFERENCE No. A/HSK/154	繪圖 DRAWING A-3
------------------------------------	-------------------



Project 0111111111 Proposed Temporary Public Vehicle Park for Private Cars, Light Goods Vehicles, Heavy Goods Vehicles & Container Trailers for a Period of 3 Years at Lots 826S.A(Part), 828, 839(Part), 840(Part) & Adjoining Government Land in D.D. 125, Ha Tsuen, Yuen Long, N.T.	Drawing Title 0411: As-built Drainage Plan	Remarks 0411: Flow of Surface Runoff
	Drawing No. 0411: Figure 5	Scale 0411: 1:1000

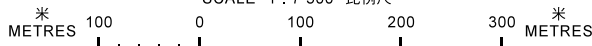
(摘錄自申請人於 7.5.2019 呈交的申請書)
 (Extract from Applicant's Submission of 7.5.2019)

參考編號 REFERENCE No. A/HSK/154	繪圖 DRAWING A-4
---	--------------------------



位置圖及同類申請 LOCATION PLAN WITH SIMILAR APPLICATIONS

臨時公眾停車場(私家車、輕型貨車、重型貨車及貨櫃拖架) (為期3年)
元朗厦村丈量約份第125約地段第826號A分段(部分)、
第828號、第839號(部分)及840號(部分)和毗連政府土地
TEMPORARY PUBLIC VEHICLE PARK FOR PRIVATE CARS,
LIGHT GOODS VEHICLES, HEAVY GOODS VEHICLES AND
CONTAINER TRAILERS FOR A PERIOD OF 3 YEARS
LOTS 826 S.A (PART), 828, 839 (PART) AND 840 (PART) IN D.D.125
AND ADJOINING GOVERNMENT LAND, HA TSUEN, YUEN LONG
SCALE 1 : 7 500 比例尺



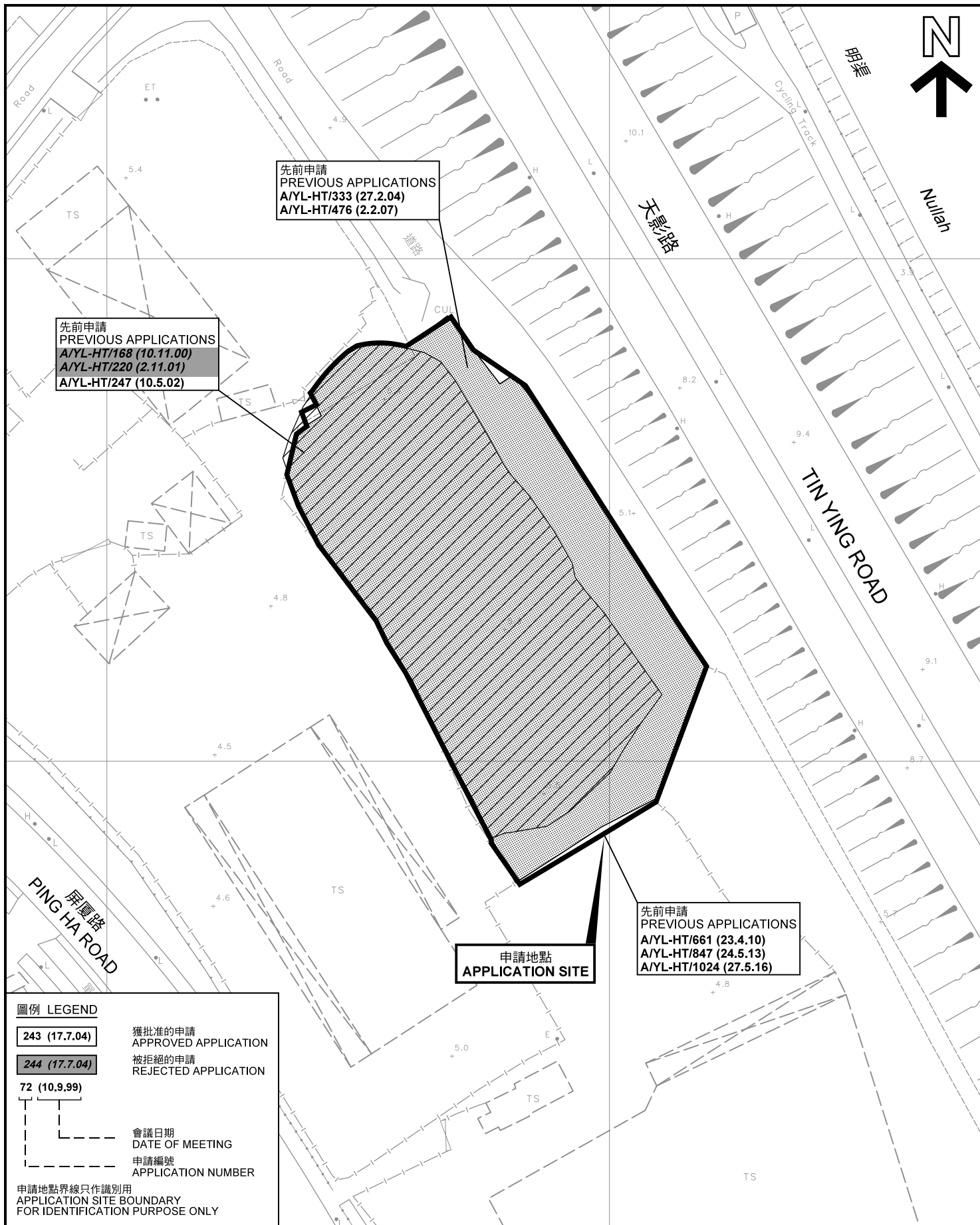
本摘要圖於2019年6月18日擬備，
所根據的資料為於2018年10月16日
核准的分區計劃大綱圖編號 S/HSK/2
EXTRACT PLAN PREPARED ON 18.6.2019
BASED ON OUTLINE ZONING PLAN No.
S/HSK/2 APPROVED ON 16.10.2018

**規劃署
PLANNING
DEPARTMENT**



參考編號
REFERENCE No.
A/HSK/154

圖 PLAN
A-1a



本摘要圖於2019年6月10日擬備，所根據的資料為測量圖編號 6-NW-2D
EXTRACT PLAN PREPARED ON 10.6.2019
BASED ON SURVEY SHEET No. 6-NW-2D

先前申請圖 PREVIOUS APPLICATIONS PLAN

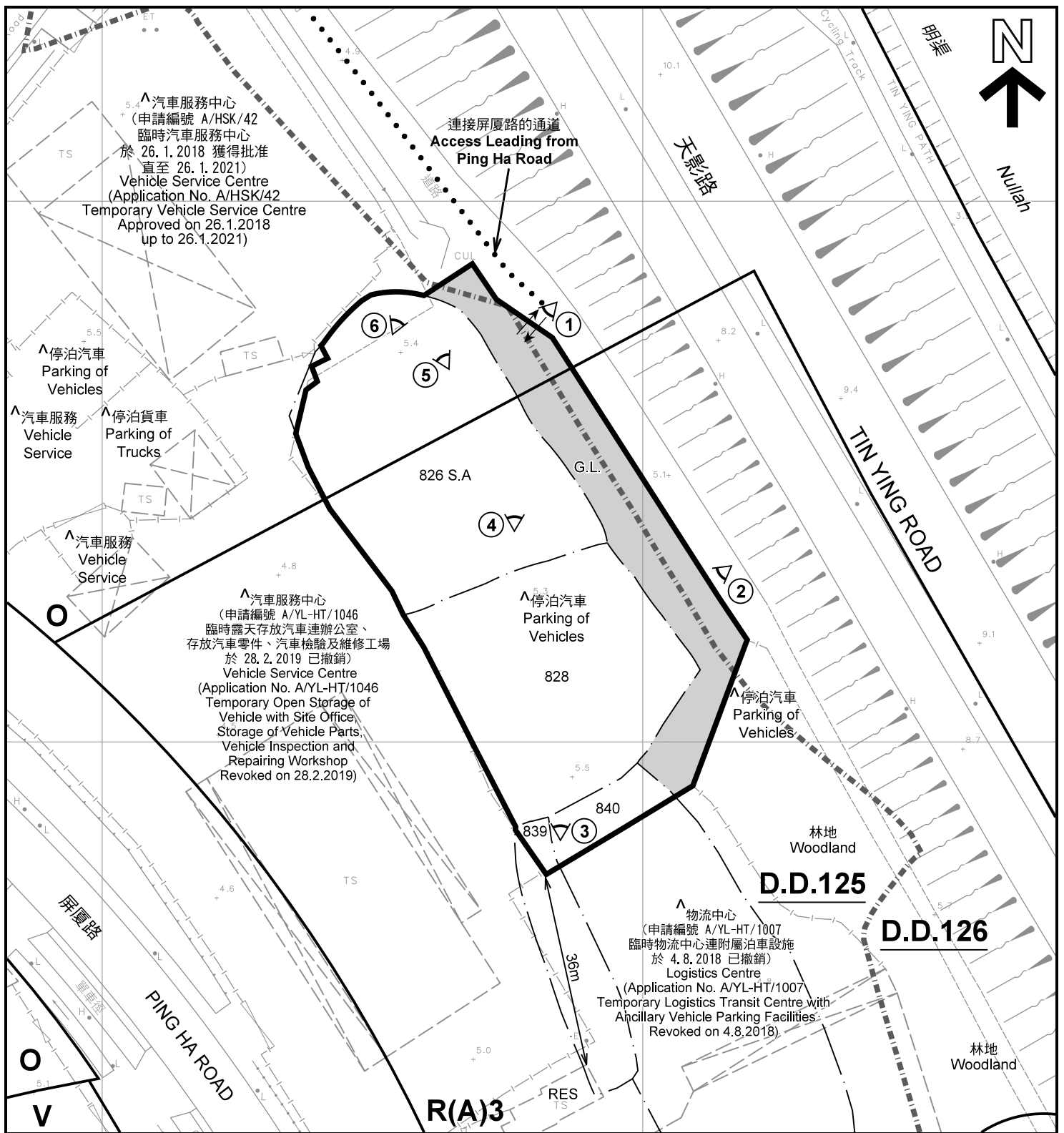
臨時公眾停車場(私家車、輕型貨車、重型貨車及貨櫃拖架) (為期3年)
元朗厦村丈量約份第125約地段第826號A分段(部分)、
第828號、第839號(部分)及840號(部分)和毗連政府土地
TEMPORARY PUBLIC VEHICLE PARK FOR PRIVATE CARS,
LIGHT GOODS VEHICLES, HEAVY GOODS VEHICLES AND
CONTAINER TRAILERS FOR A PERIOD OF 3 YEARS
LOTS 826 S.A (PART), 828, 839 (PART) AND 840 (PART) IN D.D.125
AND ADJOINING GOVERNMENT LAND, HA TSUEN, YUEN LONG
SCALE 1 : 1 000 比例尺

米 20 0 20 40 米
METRES

規劃署
PLANNING DEPARTMENT

參考編號
REFERENCE No.
A/HSK/154

圖 PLAN
A-1b



註釋 Notes :

- (1) 2019年5月14日勘測的土地用途
Land uses shown on this plan are in accordance with the land use survey conducted by the Planning Department on 14.5.2019
- (2) * 土地用途跟1992年3月勘測的土地用途一致
Indicates that the use is the same as that revealed by the land use survey conducted by the Planning Department in Mar 1992
- (3) △ 土地用途跟1992年3月勘測的土地用途有別
Indicates that the use is different from that revealed by the land use survey conducted by the Planning Department on in Mar 1992

圖例 LEGEND

- | | | | |
|-------------|--|-----|---|
| | 申請地點(界線只作識別用)
APPLICATION SITE
(BOUNDARY FOR IDENTIFICATION
PURPOSE ONLY) | | G.L. 政府土地
GOVERNMENT LAND |
| R(A) | 住宅(甲類)
RESIDENTIAL (GROUP A) | RES | 住用構築物
RESIDENTIAL STRUCTURES |
| V | 鄉村式發展
VILLAGE TYPE DEVELOPMENT | | 實地照片的觀景點
VIEWING POINT OF SITE PHOTO |
| O | 休憩用地
OPEN SPACE | | 丈量約份界線
D.D. BOUNDARY |
| | | | 入口/出口
INGRESS / EGRESS |

平面圖 SITE PLAN

臨時公眾停車場(私家車、輕型貨車、重型貨車及貨櫃拖架) (為期3年)
元朗厦村丈量約份第125約地段第826號A分段(部分)、
第828號、第839號(部分)及840號(部分)和毗連政府土地
TEMPORARY PUBLIC VEHICLE PARK FOR PRIVATE CARS,
LIGHT GOODS VEHICLES, HEAVY GOODS VEHICLES AND
CONTAINER TRAILERS FOR A PERIOD OF 3 YEARS
LOTS 826 S.A (PART), 828, 839 (PART) AND 840 (PART) IN D.D.125
AND ADJOINING GOVERNMENT LAND, HA TSUEN, YUEN LONG
SCALE 1 : 1 000 比例尺

米 20 0 20 40 米
METRES

本摘要圖於2019年6月19日擬備, 所根據的
資料為測量圖編號 6-NW-2D
EXTRACT PLAN PREPARED ON 19.6.2019
BASED ON SURVEY SHEET No. 6-NW-2D

規劃署
PLANNING
DEPARTMENT



參考編號
REFERENCE No.
A/HSK/154

圖 PLAN
A-2



圖例 LEGEND



申請地點(界線只作識別用)
APPLICATION SITE
(BOUNDARY FOR IDENTIFICATION
PURPOSE ONLY)

本摘要圖於2019年6月10日擬備，所根據的資料為地政總署於2018年1月3日拍得的航攝照片編號 E033660C
EXTRACT PLAN PREPARED ON 10.6.2019
BASED ON AERIAL PHOTO No.
E033660C TAKEN ON 3.1.2018
BY LANDS DEPARTMENT

航攝照片 AERIAL PHOTO

臨時公眾停車場(私家車、輕型貨車、重型貨車及貨櫃拖架) (為期3年)
元朗厦村丈量約份第125約地段第826號A分段(部分)、
第828號、第839號(部分)及840號(部分)和毗連政府土地
TEMPORARY PUBLIC VEHICLE PARK FOR PRIVATE CARS,
LIGHT GOODS VEHICLES, HEAVY GOODS VEHICLES AND
CONTAINER TRAILERS FOR A PERIOD OF 3 YEARS
LOTS 826 S.A (PART), 828, 839 (PART) AND 840 (PART) IN D.D.125
AND ADJOINING GOVERNMENT LAND, HA TSUEN, YUEN LONG

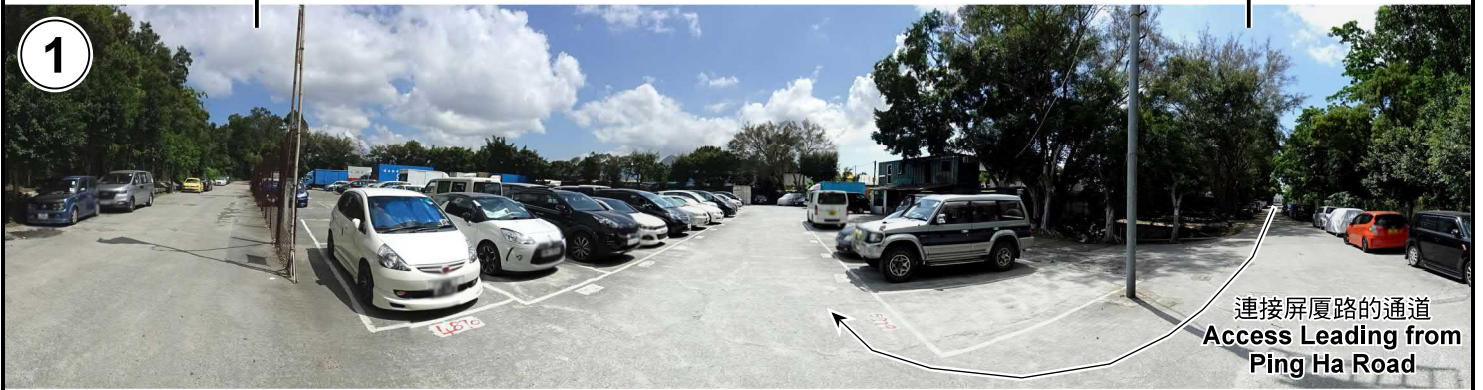
規劃署
PLANNING
DEPARTMENT



參考編號
REFERENCE No.
A/HSK/154

圖 PLAN
A-3

申請地點
APPLICATION SITE



申請地點
APPLICATION SITE



實地照片 SITE PHOTOS

臨時公眾停車場(私家車、輕型貨車、重型貨車及貨櫃拖架) (為期3年)
元朗厦村丈量約份第125約地段第826號A分段(部分)、
第828號、第839號(部分)及840號(部分)和毗連政府土地
TEMPORARY PUBLIC VEHICLE PARK FOR PRIVATE CARS,
LIGHT GOODS VEHICLES, HEAVY GOODS VEHICLES AND
CONTAINER TRAILERS FOR A PERIOD OF 3 YEARS
LOTS 826 S.A (PART), 828, 839 (PART) AND 840 (PART) IN D.D.125
AND ADJOINING GOVERNMENT LAND, HA TSUEN, YUEN LONG

規劃署
PLANNING
DEPARTMENT



參考編號
REFERENCE No.
A/HSK/154

圖 PLAN
A-4a

本圖於2019年6月10日擬備，所根據的資料為攝於2019年5月14日的實地照片
PLAN PREPARED ON 10.6.2019
BASED ON SITE PHOTOS
TAKEN ON 14.5.2019



4

申請地點
APPLICATION SITE



5

申請地點
APPLICATION SITE



6

申請地點
APPLICATION SITE

實地照片 SITE PHOTOS

臨時公眾停車場(私家車、輕型貨車、重型貨車及貨櫃拖架) (為期3年)
元朗厦村丈量約份第125約地段第826號A分段(部分)、
第828號、第839號(部分)及840號(部分)和毗連政府土地
TEMPORARY PUBLIC VEHICLE PARK FOR PRIVATE CARS,
LIGHT GOODS VEHICLES, HEAVY GOODS VEHICLES AND
CONTAINER TRAILERS FOR A PERIOD OF 3 YEARS
LOTS 826 S.A (PART), 828, 839 (PART) AND 840 (PART) IN D.D.125
AND ADJOINING GOVERNMENT LAND, HA TSUEN, YUEN LONG

規劃署
PLANNING
DEPARTMENT



參考編號
REFERENCE No.
A/HSK/154

圖 PLAN
A-4b

本圖於2019年6月10日擬備，所根據的資料為攝於2019年5月14日的實地照片
PLAN PREPARED ON 10.6.2019
BASED ON SITE PHOTOS
TAKEN ON 14.5.2019