

SK 01 1 7 MAIL 2018

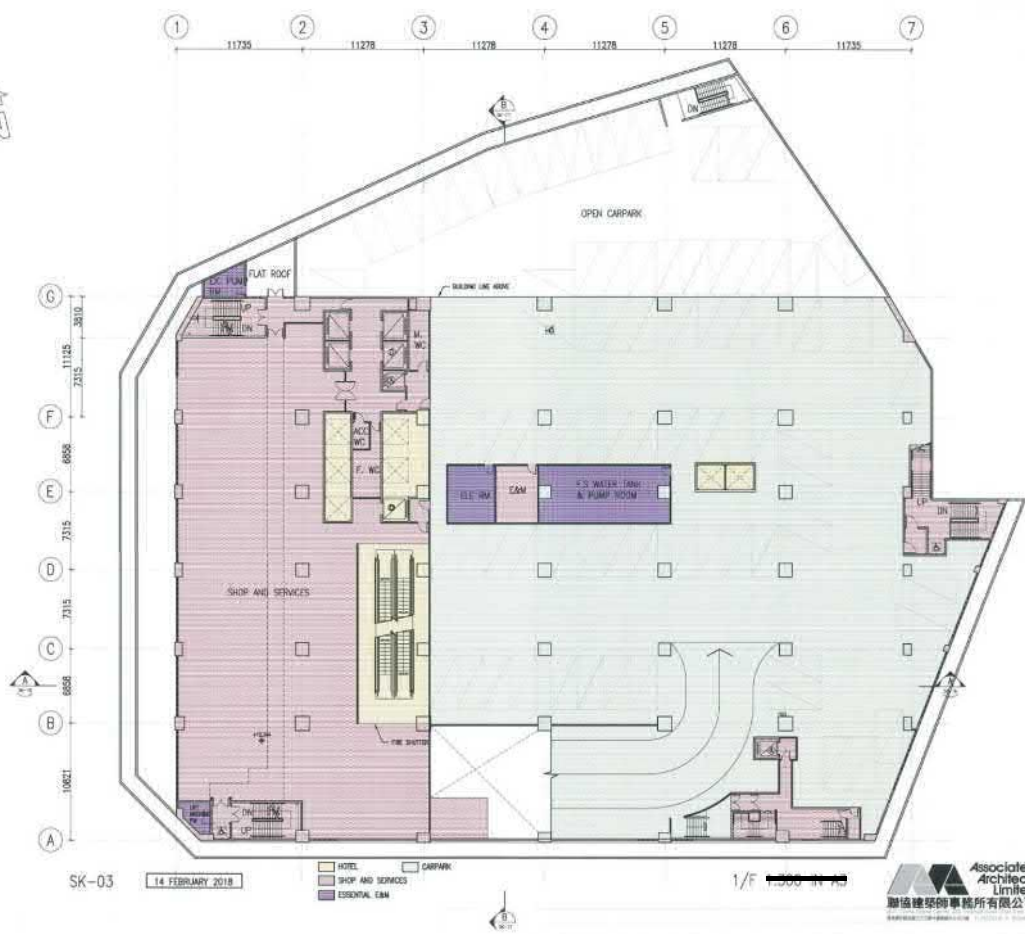
40' IN STRFT

G/F 1:300 IN A3
(WITH PROPOSED RADIATION WALL)



參考編號 REFERENCE No. A/TM/523	繪圖 DRAWING A-1
--------------------------------	-------------------

(摘錄自申請人於8.3.2019呈交的申請書)
(Extract from Applicant's
Submission Dated 8.3.2019)

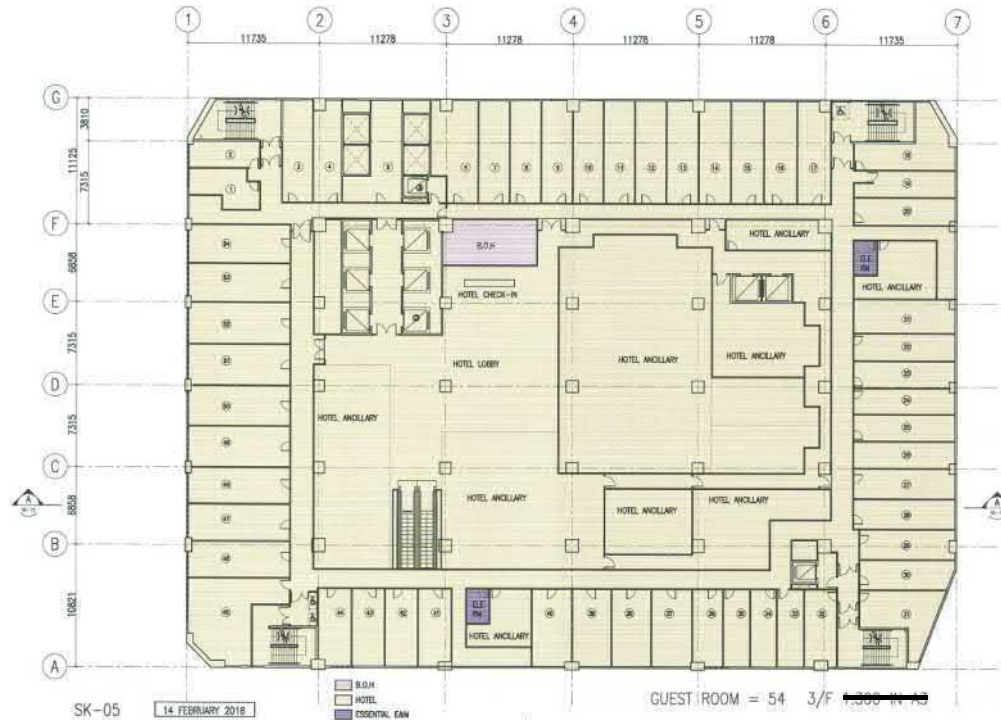


參考編號 REFERENCE No.	繪圖 DRAWING
A/TM/523	A-2

(摘錄自申請人於24. 4. 2018呈交的申請書)
(Extract from Applicant's
Submission Dated 24.4.2018)



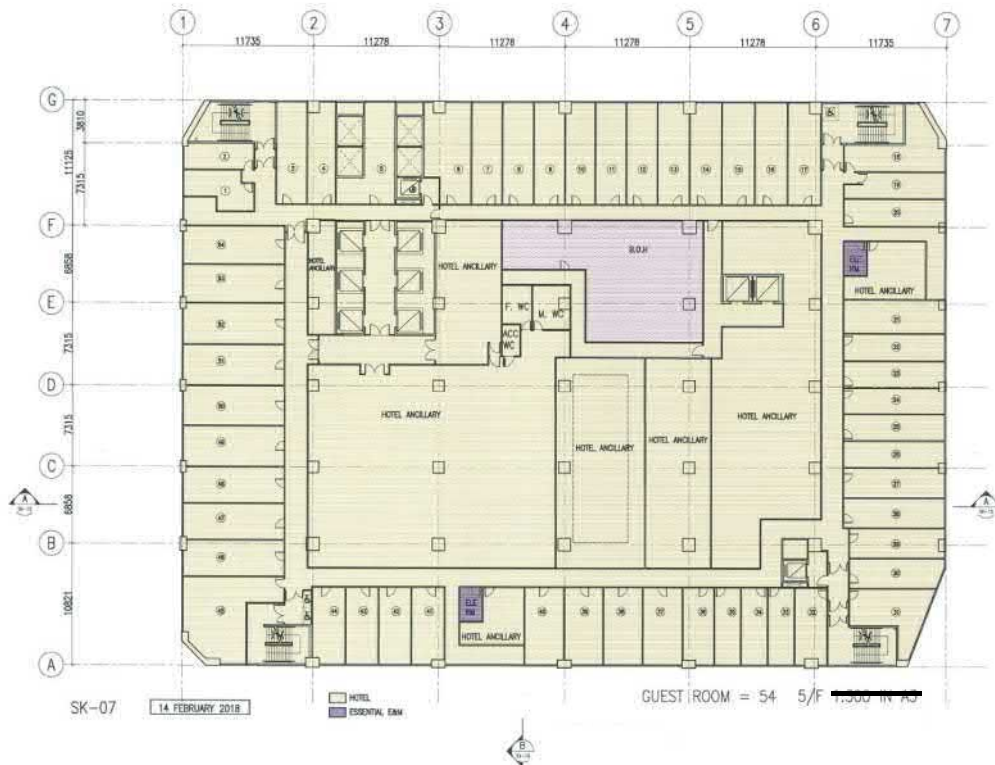
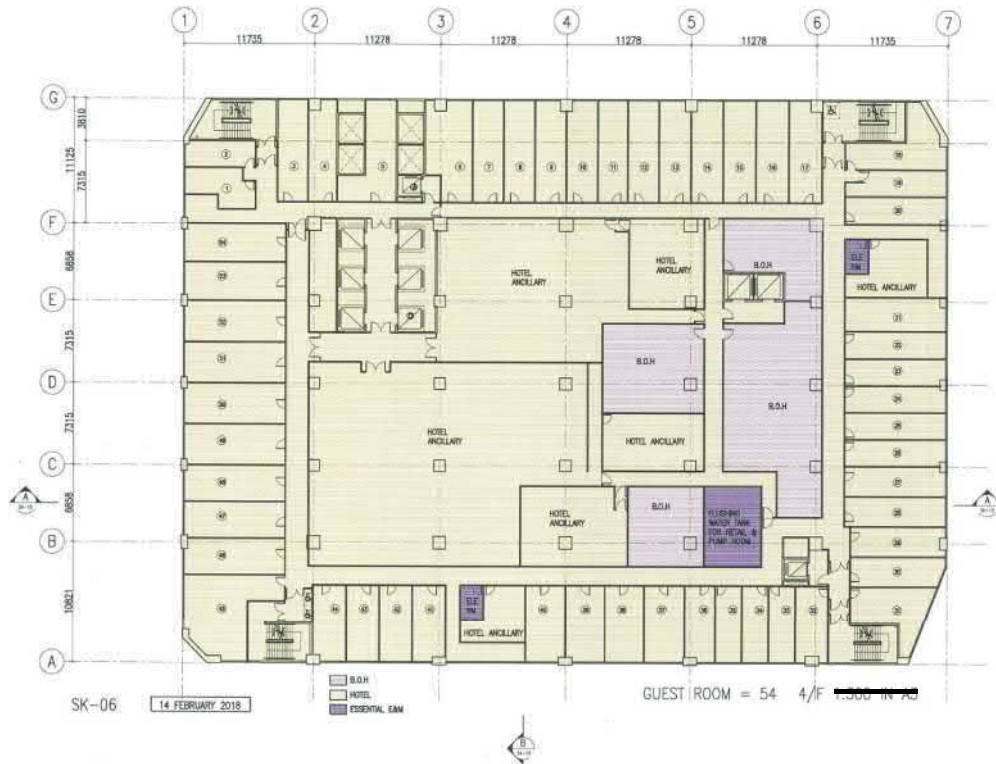
Associated Architects Limited
聯協建築師事務所有限公司



Associated Architects Limited
聯協建築師事務所有限公司

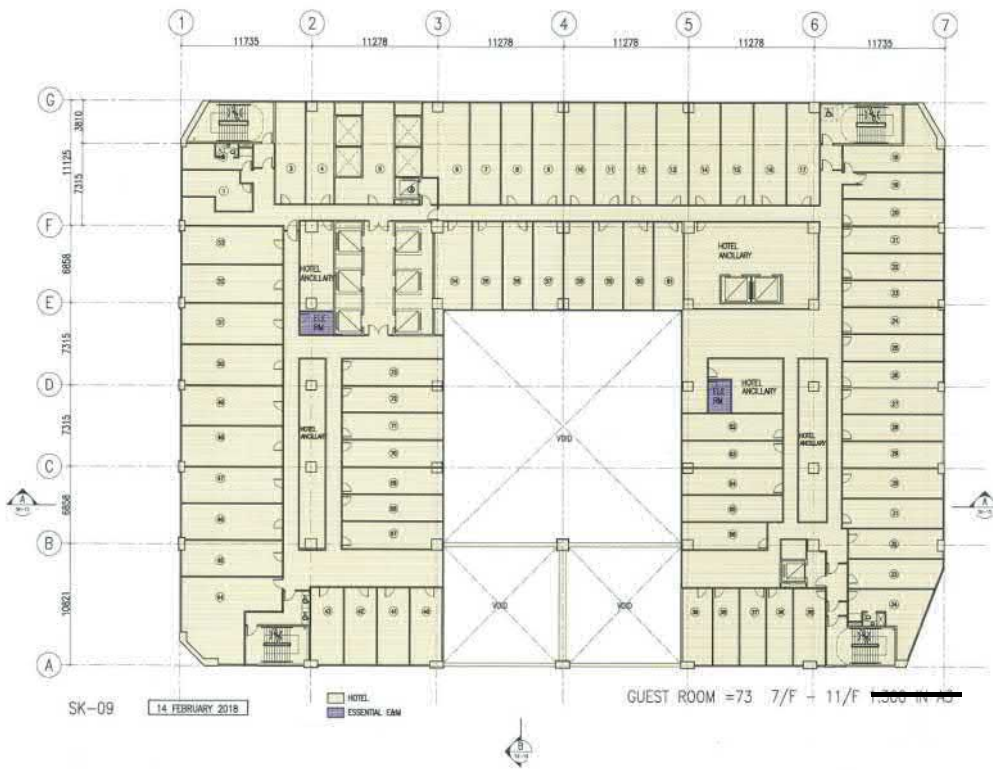
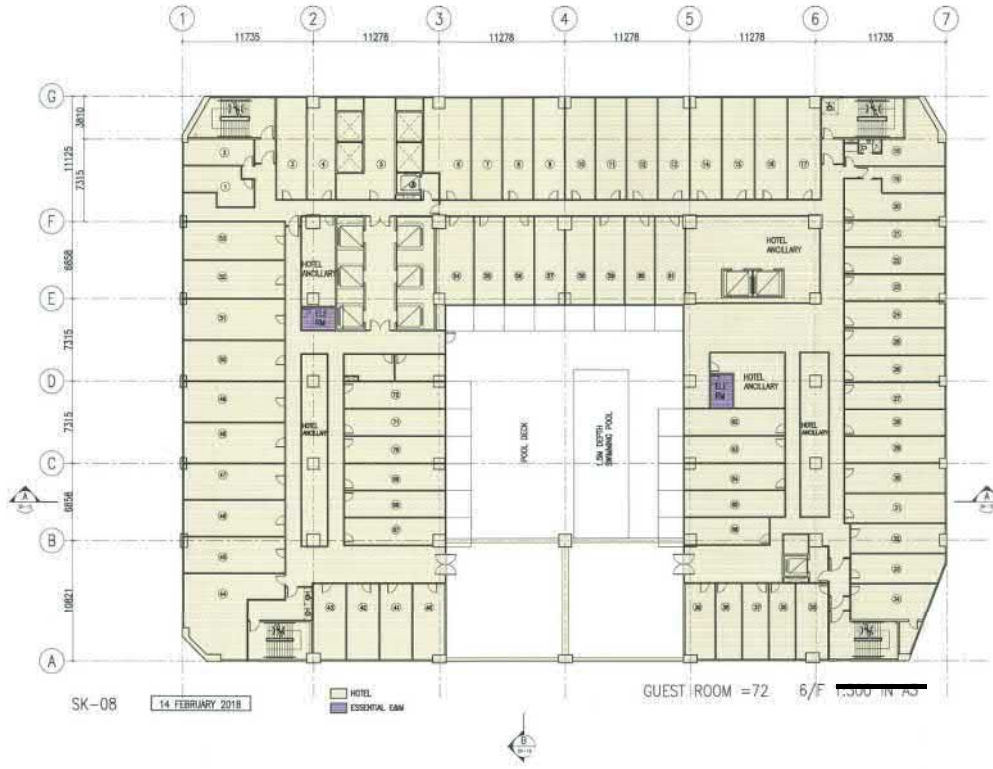
參考編號 REFERENCE No.	繪圖 DRAWING
A/TM/523	A-3

(摘錄自申請人於24. 4. 2018呈交的申請書)
(Extract from Applicant's
Submission Dated 24.4.2018)



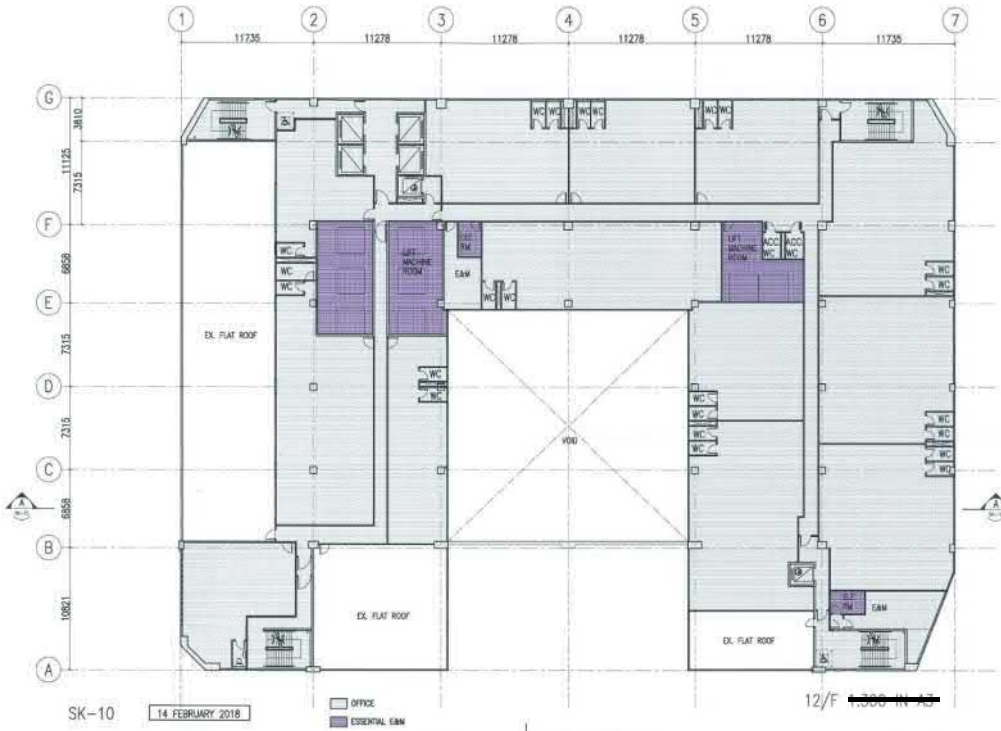
參考編號 REFERENCE No.	繪圖 DRAWING
A/TM/523	A-4

(摘錄自申請人於24. 4. 2018呈交的申請書)
 (Extract from Applicant's
 Submission Dated 24.4.2018)

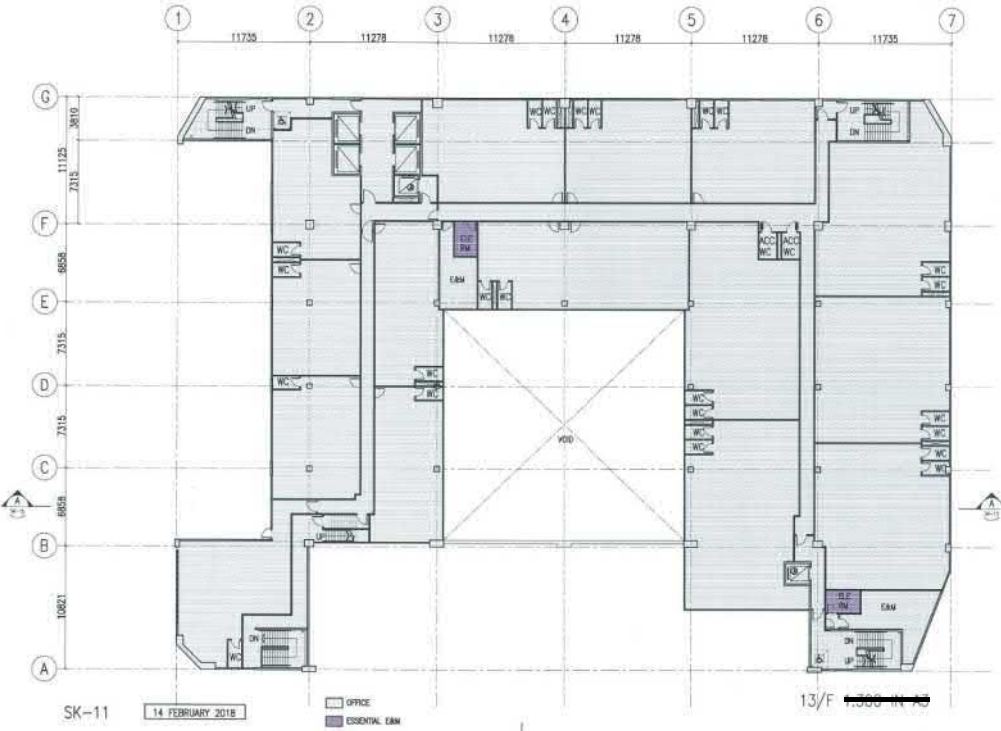


參考編號 REFERENCE No.	繪圖 DRAWING
A/TM/523	A-5

(摘錄自申請人於24. 4. 2018呈交之申請書)
 (Extract from Applicant's
 Submission Dated 24.4.2018)



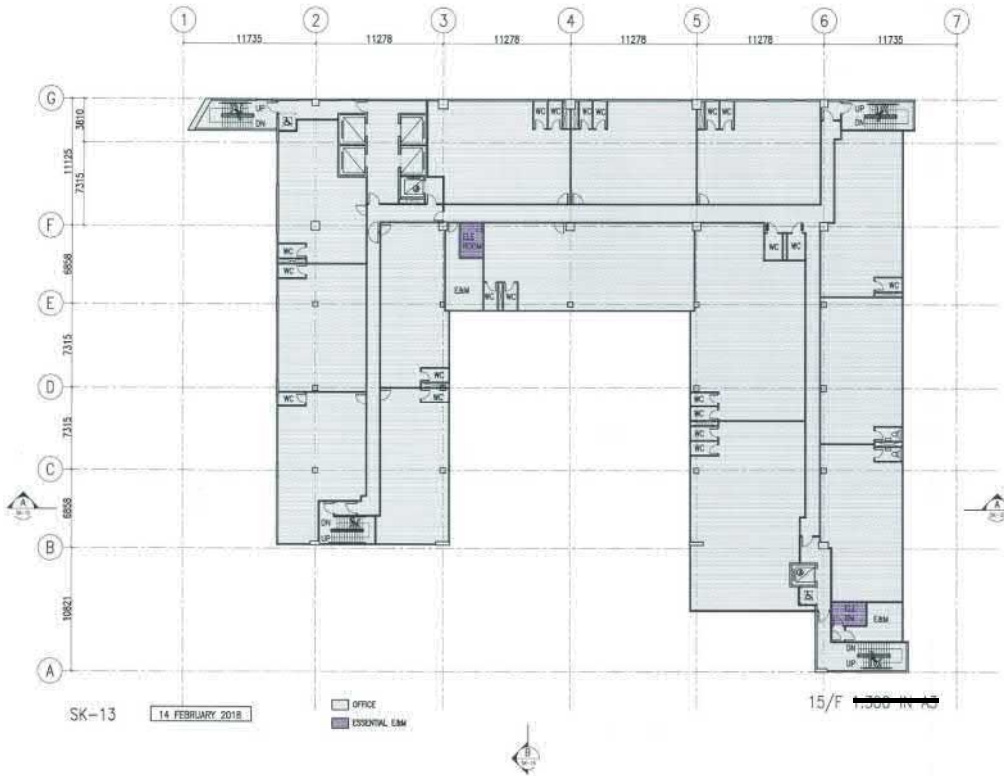
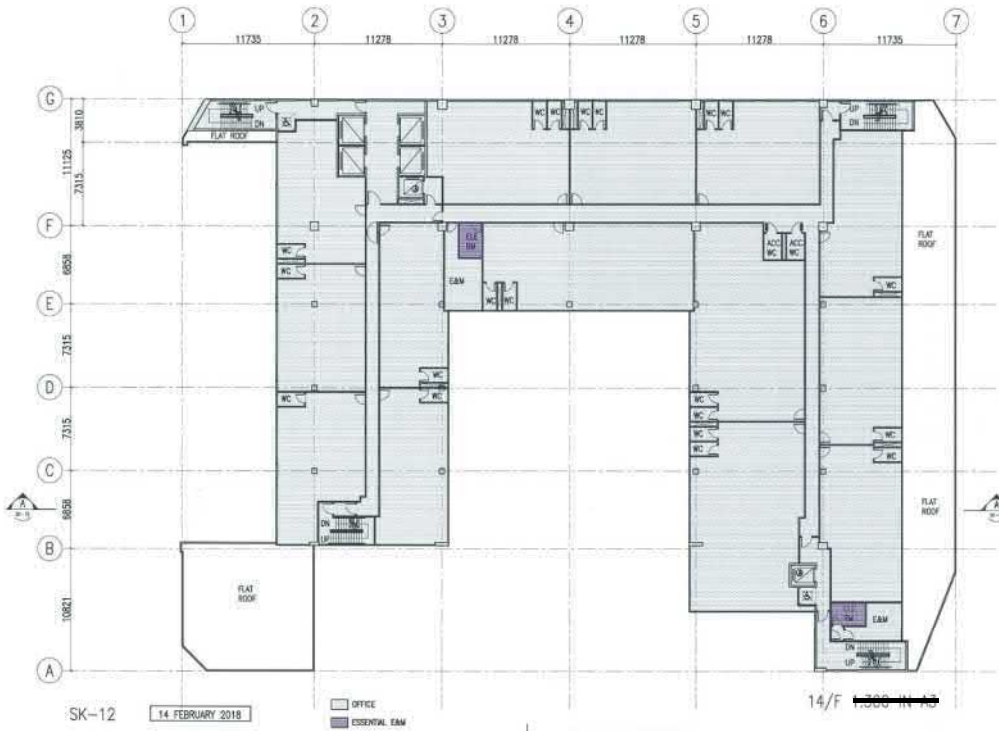
Associated Architects Limited
聯協建築師事務所有限公司
Professional Corporation of Architects, Engineers, Planners and Interior Designers
香港專業建築師學會會員



Associated Architects Limited
聯協建築師事務所有限公司
Professional Corporation of Architects, Engineers, Planners and Interior Designers
香港專業建築師學會會員

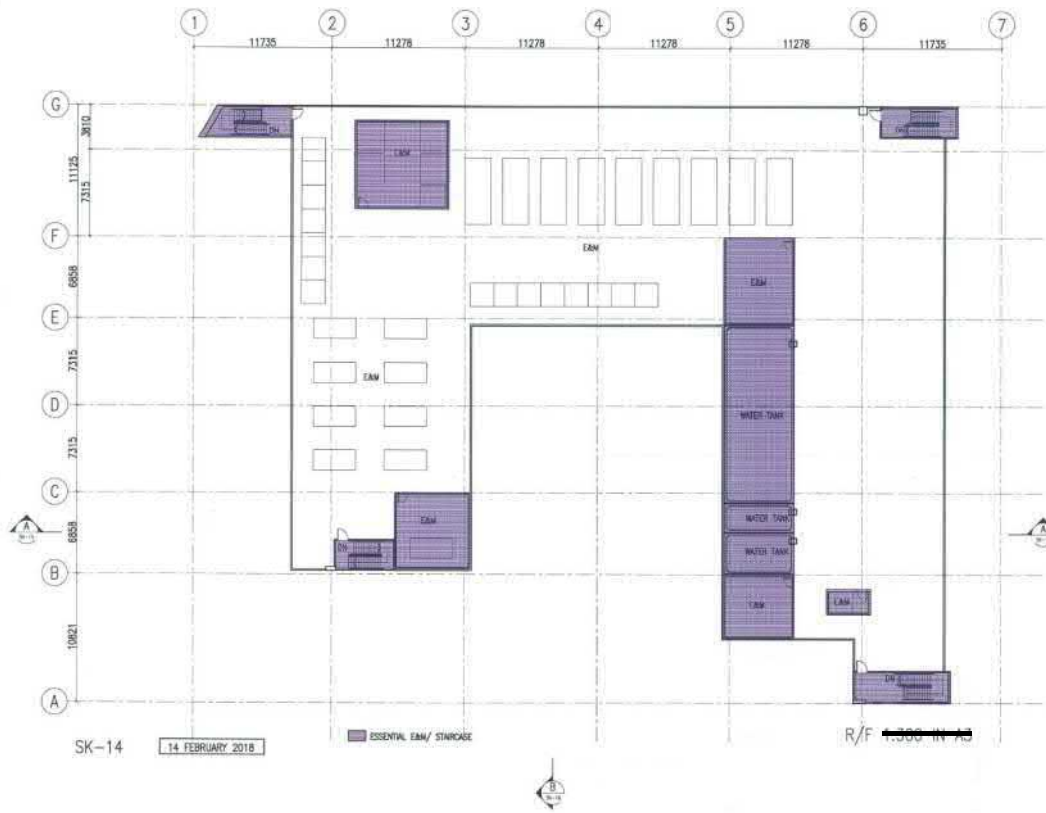
參考編號 REFERENCE No.	繪圖 DRAWING
A/TM/523	A-6

(摘錄自申請人於24. 4. 2018呈交的申請書)
(Extract from Applicant's
Submission Dated 24.4.2018)



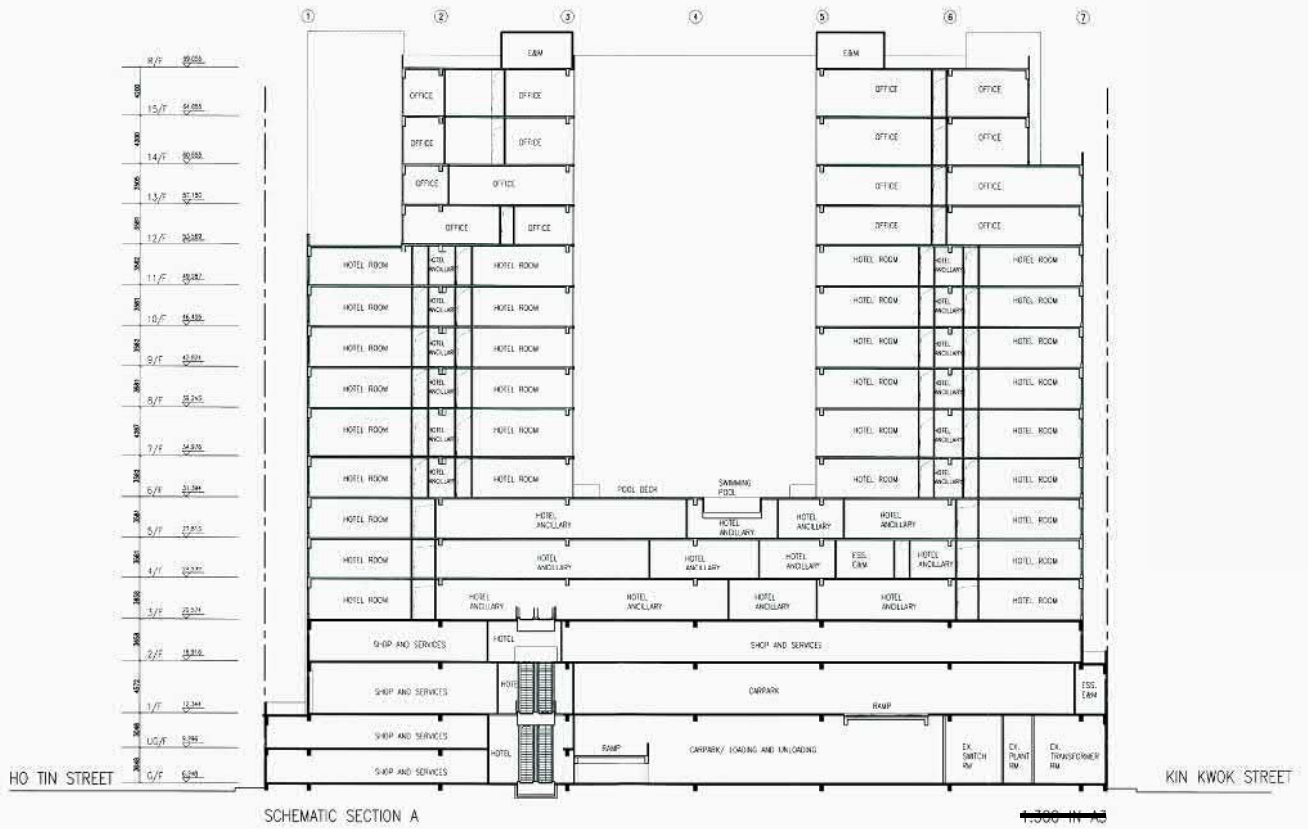
參考編號 REFERENCE No.	繪圖 DRAWING
A/TM/523	A-7

(摘錄自申請人於24. 4. 2018呈交的申請書)
(Extract from Applicant's
Submission Dated 24.4.2018)



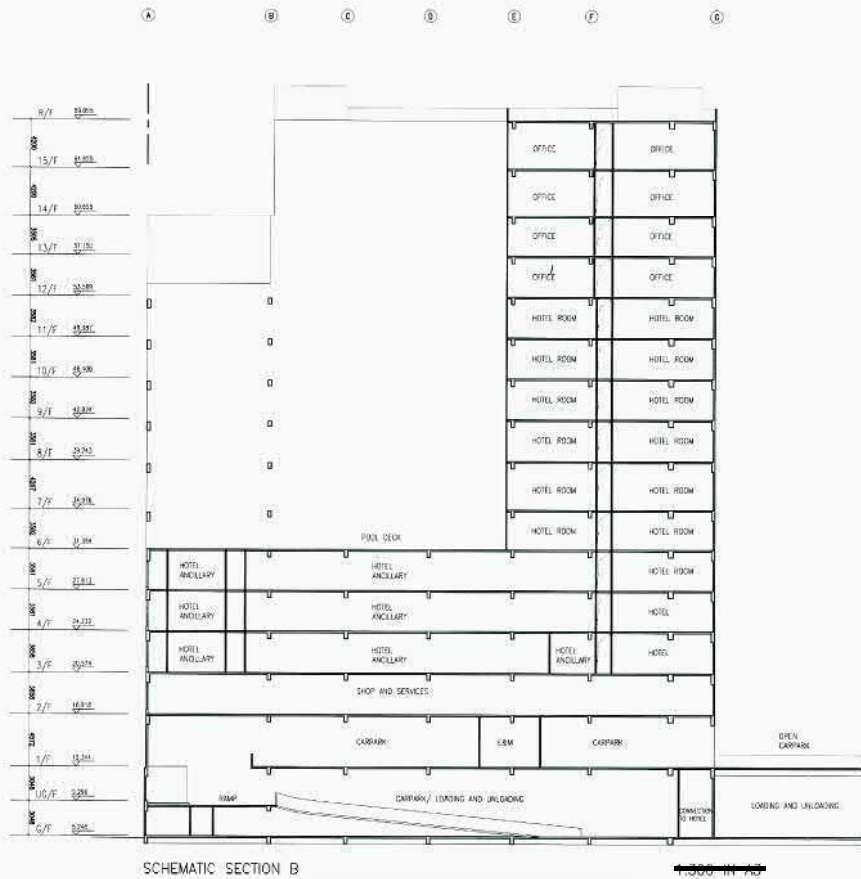
參考編號 REFERENCE No.	繪圖 DRAWING
A/TM/523	A-8

(摘錄自申請人於24. 4. 2018呈交的申請書)
(Extract from Applicant's
Submission Dated 24.4.2018)



SK-15 14 FEBRUARY 2018

Associated Architects Limited
聯協建築師事務所有限公司

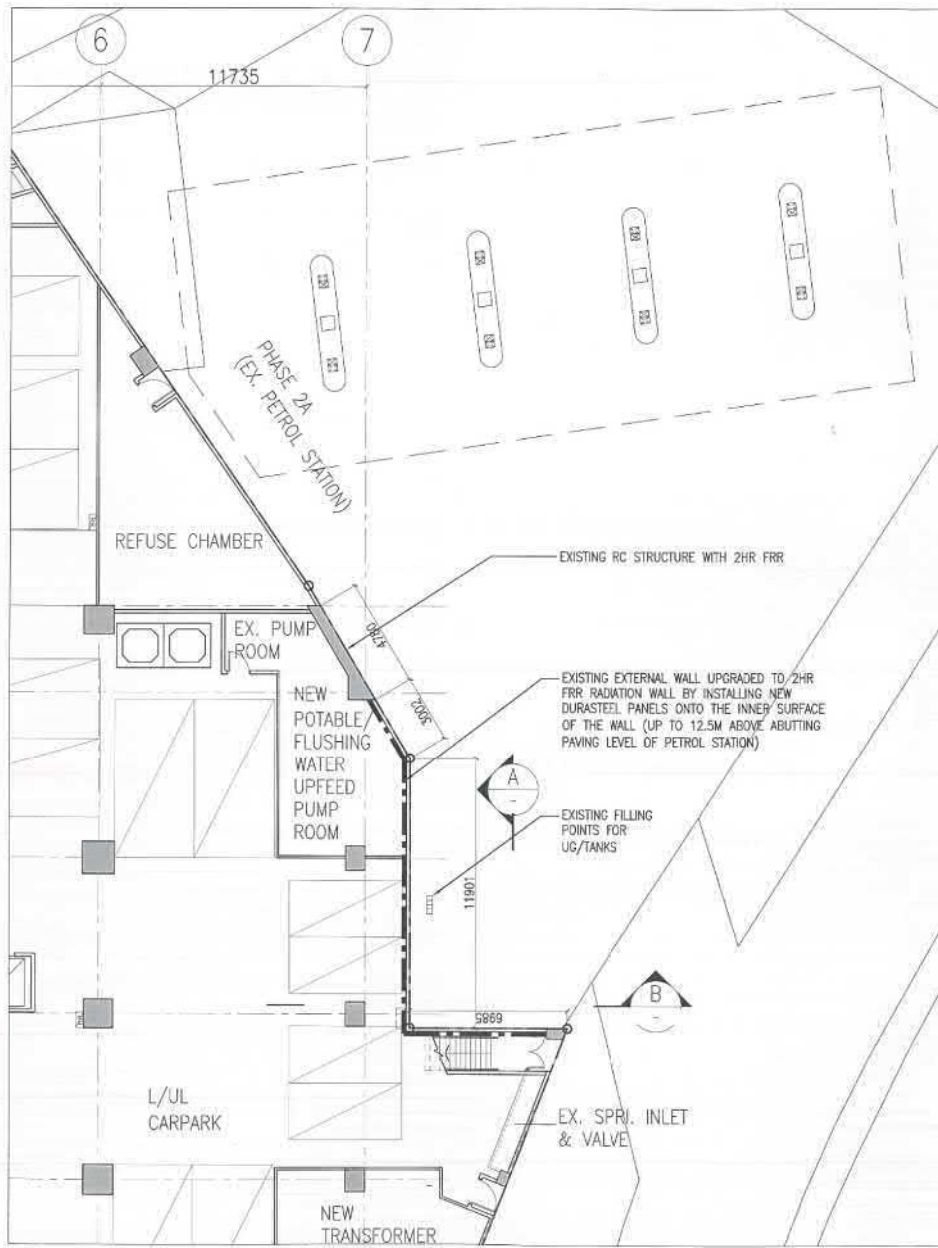


SK-16 14 FEBRUARY 2018

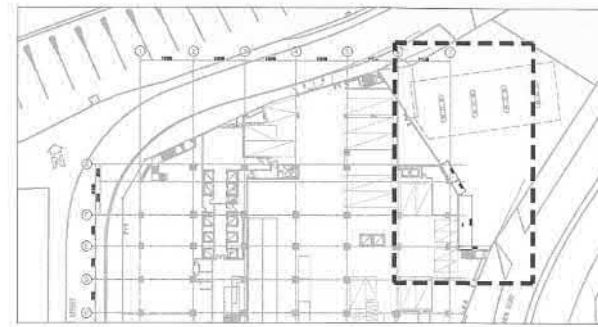
Associated Architects Limited
聯協建築師事務所有限公司

參考編號 REFERENCE No. 繪圖 DRAWING
A/TM/523 A-9

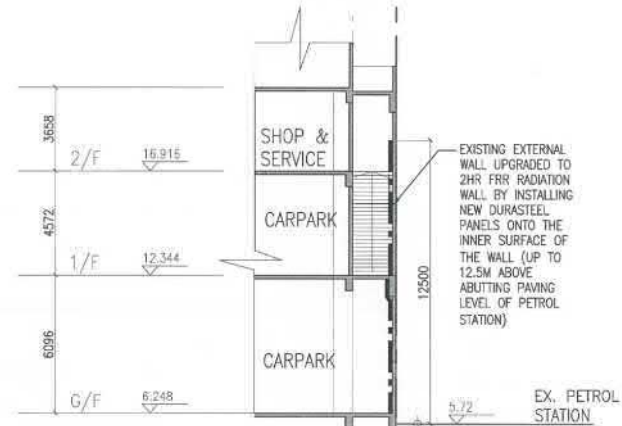
(摘錄自申請人於24. 4. 2018呈交的申請書)
(Extract from Applicant's
Submission Dated 24.4.2018)



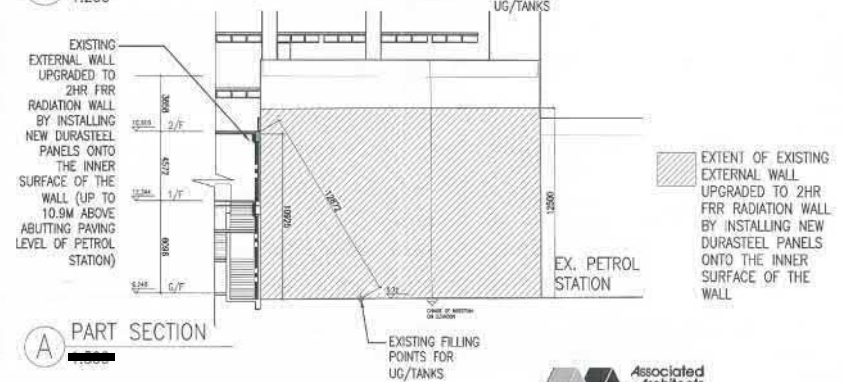
PART PLAN G/F 11256



KEY PLAN G/F 11256



(B) PART SECTION 11256



(A) PART SECTION 11256

WHOLESALE CONVERSION OF EAST ASIA INDUSTRIAL BUILDING

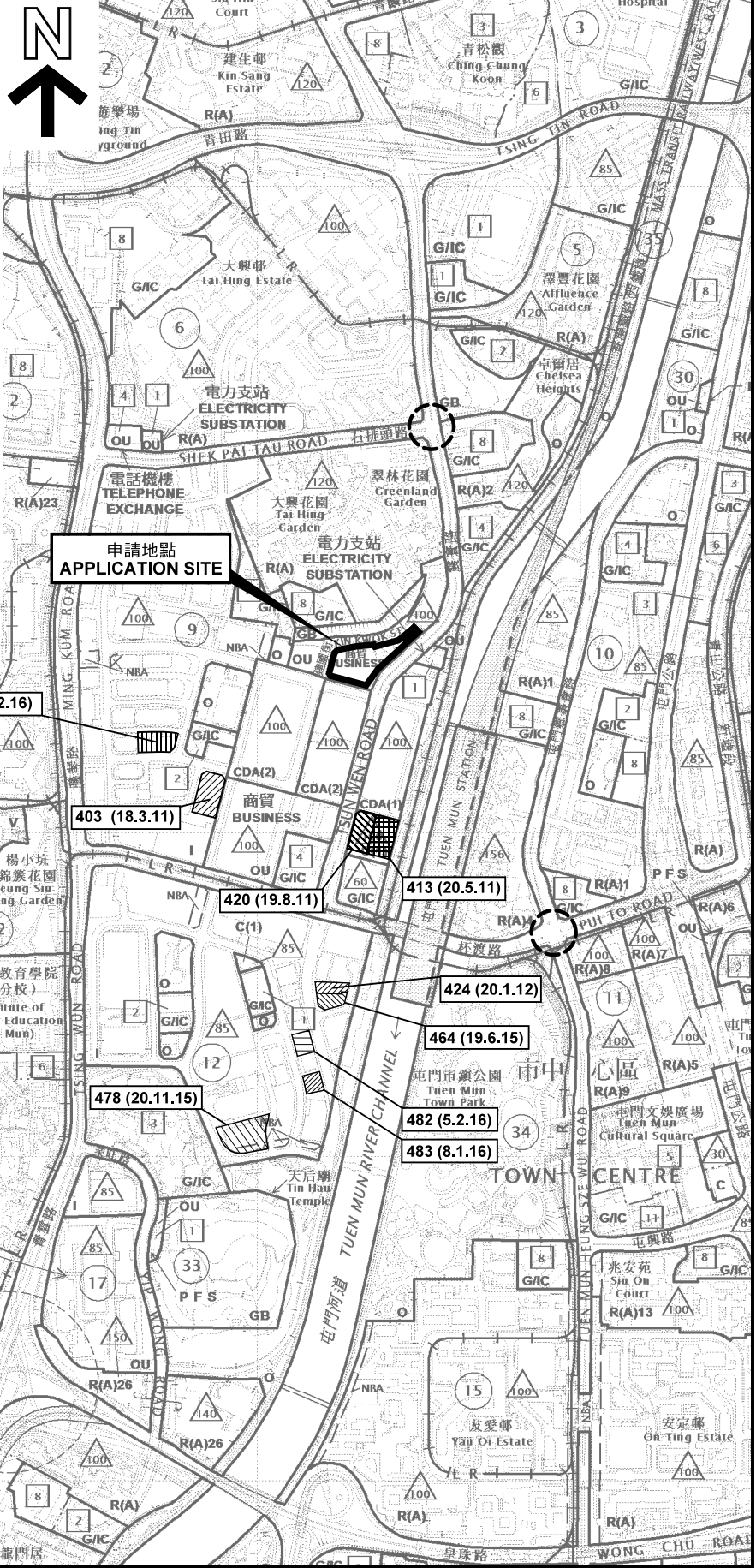
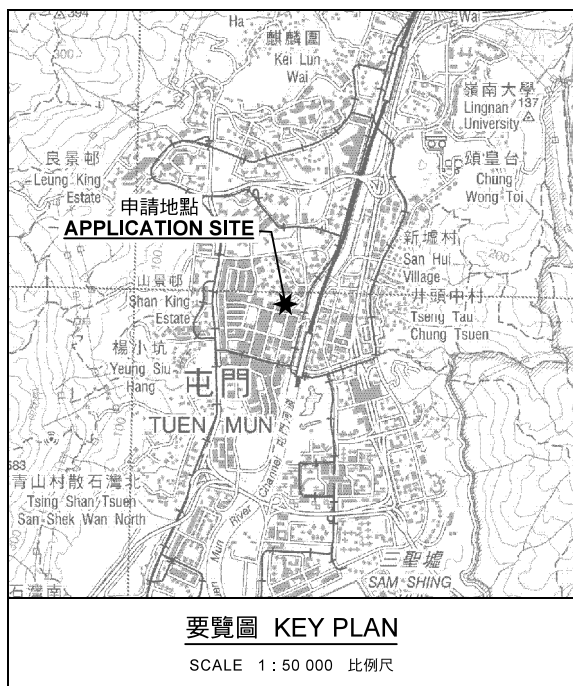


29 AUG 2018


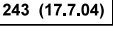
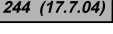
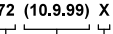



參考編號 REFERENCE No.	繪圖 DRAWING
A/TM/523	A-10

(摘錄自申請人於7.9.2018呈交的申請書)

(Extract from Applicant's Submission Dated 7.9.2018)



圖例 LEGEND

-  申請人擬議路口改善工程
JUNCTION IMPROVEMENT WORKS PROPOSED BY APPLICANT
-  243 (17.7.04) 獲批准的申請
APPROVED APPLICATION
-  244 (17.7.04) 被拒絕的申請
REJECTED APPLICATION
-  72 (10.9.99) X 已撤銷
REVOKED
-  會議日期
DATE OF MEETING
-  申請編號
APPLICATION NUMBER
-  申請地點界線只作識別用
APPLICATION SITE BOUNDARY FOR IDENTIFICATION PURPOSE ONLY

本摘要圖於2019年3月12日擬備，所根據的資料為於2018年12月11日核准的分區計劃大綱圖編號 S/TM/35
EXTRACT PLAN PREPARED ON 12.3.2019 BASED ON OUTLINE ZONING PLAN No. S/TM/35 APPROVED ON 11.12.2018


位置圖 LOCATION PLAN

擬議酒店，辦公室，商店及服務行業(改裝整幢現有工業大廈)
PROPOSED HOTEL, OFFICE AND SHOP AND SERVICES (WHOLESALE CONVERSION OF AN EXISTING INDUSTRIAL BUILDING)
EAST ASIA INDUSTRIAL BUILDING,
2 HO TIN STREET, TUEN MUN

SCALE 1 : 10 000 比例尺

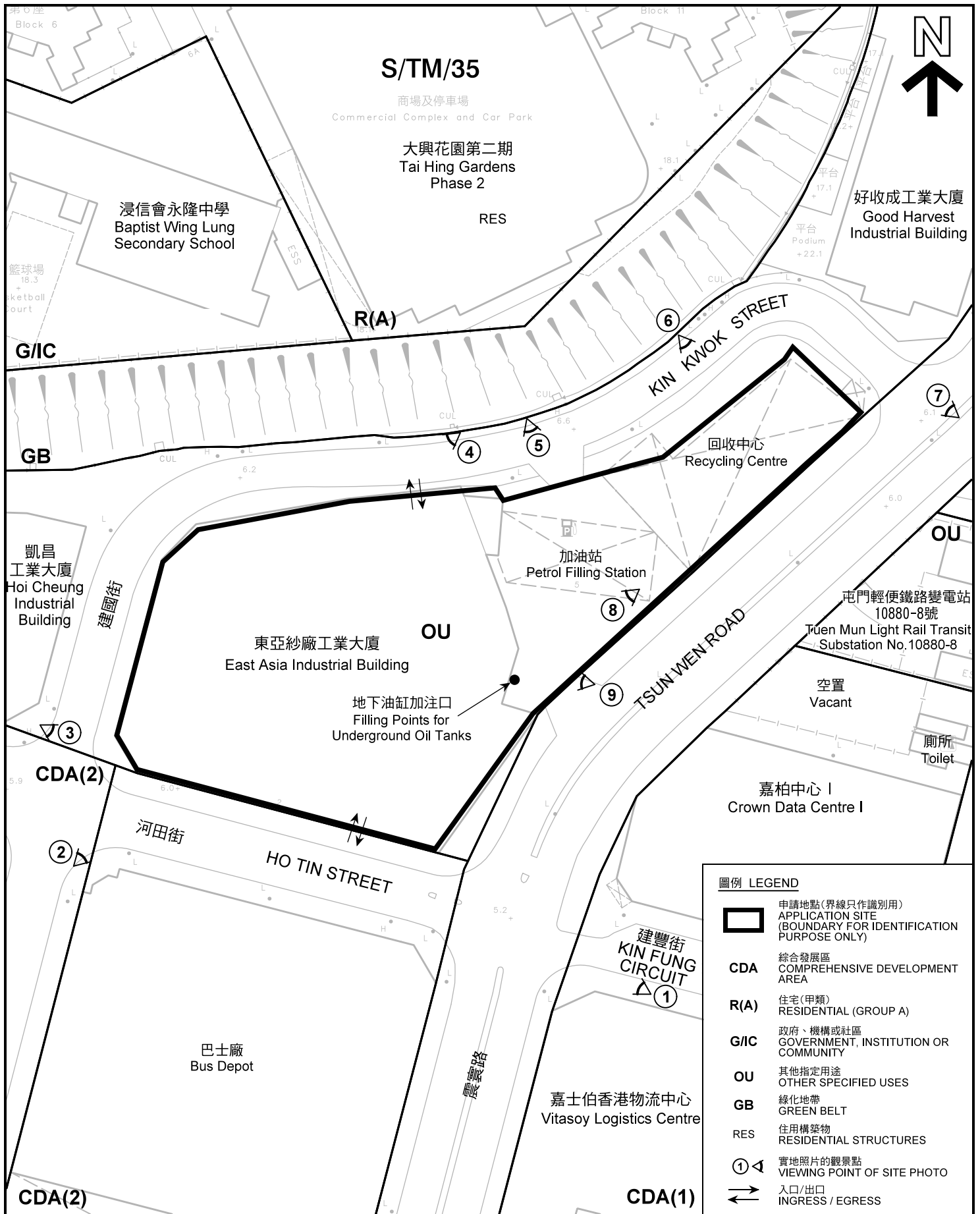


規劃署 PLANNING DEPARTMENT



參考編號 REFERENCE No. **A/TM/523**

圖 PLAN **A-1**



平面圖 SITE PLAN

擬議酒店, 辦公室, 商店及服務行業(改裝整幢現有工業大廈)
屯門河田街2號東亞紗廠工業大廈
PROPOSED HOTEL, OFFICE AND SHOP AND SERVICES
(WHOLESALE CONVERSION OF
AN EXISTING INDUSTRIAL BUILDING)
EAST ASIA INDUSTRIAL BUILDING,
2 HO TIN STREET, TUEN MUN

SCALE 1 : 1 000 比例尺

米 METRES 20 0 20 40 米 METRES

本摘要圖於2018年12月11日擬備, 所根據的資料為測量圖編號6-SW-1C及6-SW-6A
EXTRACT PLAN PREPARED ON 11.12.2018
BASED ON SURVEY SHEETS No.
6-SW-1C & 6-SW-6A

規劃署
PLANNING
DEPARTMENT



參考編號
REFERENCE No.
A/TM/523

圖 PLAN
A-2



圖例 LEGEND



申請地點(界線只作識別用)
APPLICATION SITE
(BOUNDARY FOR IDENTIFICATION
PURPOSE ONLY)

本摘要圖於2019年3月6日擬備，所根據的資料為地政總署於2017年4月2日拍得的航攝照片編號E017960C
EXTRACT PLAN PREPARED ON 6.3.2019
BASED ON AERIAL PHOTO No.
E017960C TAKEN ON 2.4.2017
BY LANDS DEPARTMENT

航攝照片 AERIAL PHOTO

擬議酒店，辦公室，商店及服務行業(改裝整幢現有工業大廈)
屯門河田街2號東亞紗廠工業大廈
PROPOSED HOTEL, OFFICE AND SHOP AND SERVICES
(WHOLESALE CONVERSION OF
AN EXISTING INDUSTRIAL BUILDING)
EAST ASIA INDUSTRIAL BUILDING,
2 HO TIN STREET, TUEN MUN

規劃署
**PLANNING
DEPARTMENT**



參考編號
REFERENCE No.
A/TM/523

圖 **PLAN**
A-3

1



2



3



本圖於2019年3月8日擬備，所根據的資料為攝於2019年3月7日的實地照片
 PLAN PREPARED ON 8.3.2019
 BASED ON SITE PHOTOS
 TAKEN ON 7.3.2019

實地照片 SITE PHOTO

擬議酒店，辦公室，商店及服務行業(改裝整幢現有工業大廈)
 屯門河田街2號東亞紗廠工業大廈
 PROPOSED HOTEL, OFFICE AND SHOP AND SERVICES
 (WHOLESALE CONVERSION OF
 AN EXISTING INDUSTRIAL BUILDING)
 EAST ASIA INDUSTRIAL BUILDING,
 2 HO TIN STREET, TUEN MUN

規劃署
**PLANNING
 DEPARTMENT**



參考編號
 REFERENCE No.
A/TM/523

圖 PLAN
A-4a



本圖於2019年3月8日擬備，所根據的資料為攝於2019年3月7日的實地照片
 PLAN PREPARED ON 8.3.2019
 BASED ON SITE PHOTOS
 TAKEN ON 7.3.2019

實地照片 SITE PHOTO

擬議酒店，辦公室，商店及服務行業(改裝整幢現有工業大廈)
 屯門河田街2號東亞紗廠工業大廈
 PROPOSED HOTEL, OFFICE AND SHOP AND SERVICES
 (WHOLESALE CONVERSION OF
 AN EXISTING INDUSTRIAL BUILDING)
 EAST ASIA INDUSTRIAL BUILDING,
 2 HO TIN STREET, TUEN MUN

規劃署
**PLANNING
 DEPARTMENT**



參考編號
 REFERENCE No.
A/TM/523

圖 PLAN
A-4b



8

申請地點
APPLICATION SITE

震寰路
TSUN WEN ROAD

加油站
Petrol Filling Station



9

申請地點
APPLICATION SITE

加油站
Petrol Filling Station

本圖於2019年3月8日擬備，所根據的資料為攝於2019年3月7日的實地照片
PLAN PREPARED ON 8.3.2019
BASED ON SITE PHOTOS
TAKEN ON 7.3.2019

實地照片 SITE PHOTO

擬議酒店，辦公室，商店及服務行業(改裝整幢現有工業大廈)
屯門河田街2號東亞紗廠工業大廈
PROPOSED HOTEL, OFFICE AND SHOP AND SERVICES
(WHOLESALE CONVERSION OF
AN EXISTING INDUSTRIAL BUILDING)
EAST ASIA INDUSTRIAL BUILDING,
2 HO TIN STREET, TUEN MUN

規劃署
PLANNING
DEPARTMENT



參考編號
REFERENCE No.
A/TM/523

圖 PLAN
A-4c