

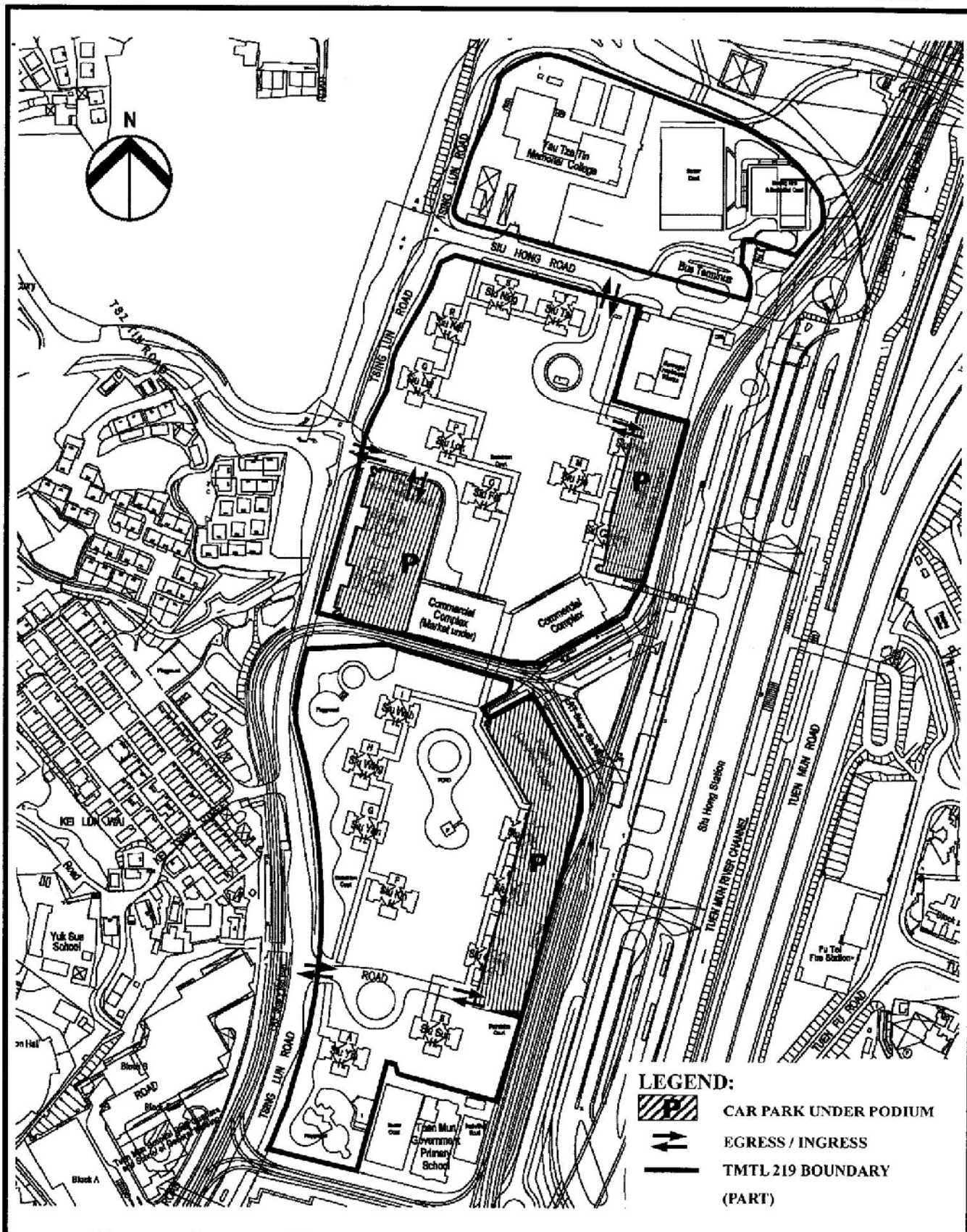
LEGEND:
 TMTL219 BOUNDARY (PART)

**LOCATION PLAN
 SIU HONG COURT**

HOUSING DEPARTMENT

參考編號 REFERENCE No.	繪圖 DRAWING
A/TM/538	A-1

(摘錄自申請人於9.4.2019呈交的申請書)
 (Extract from Applicant's Submission Dated 9.4.2019)

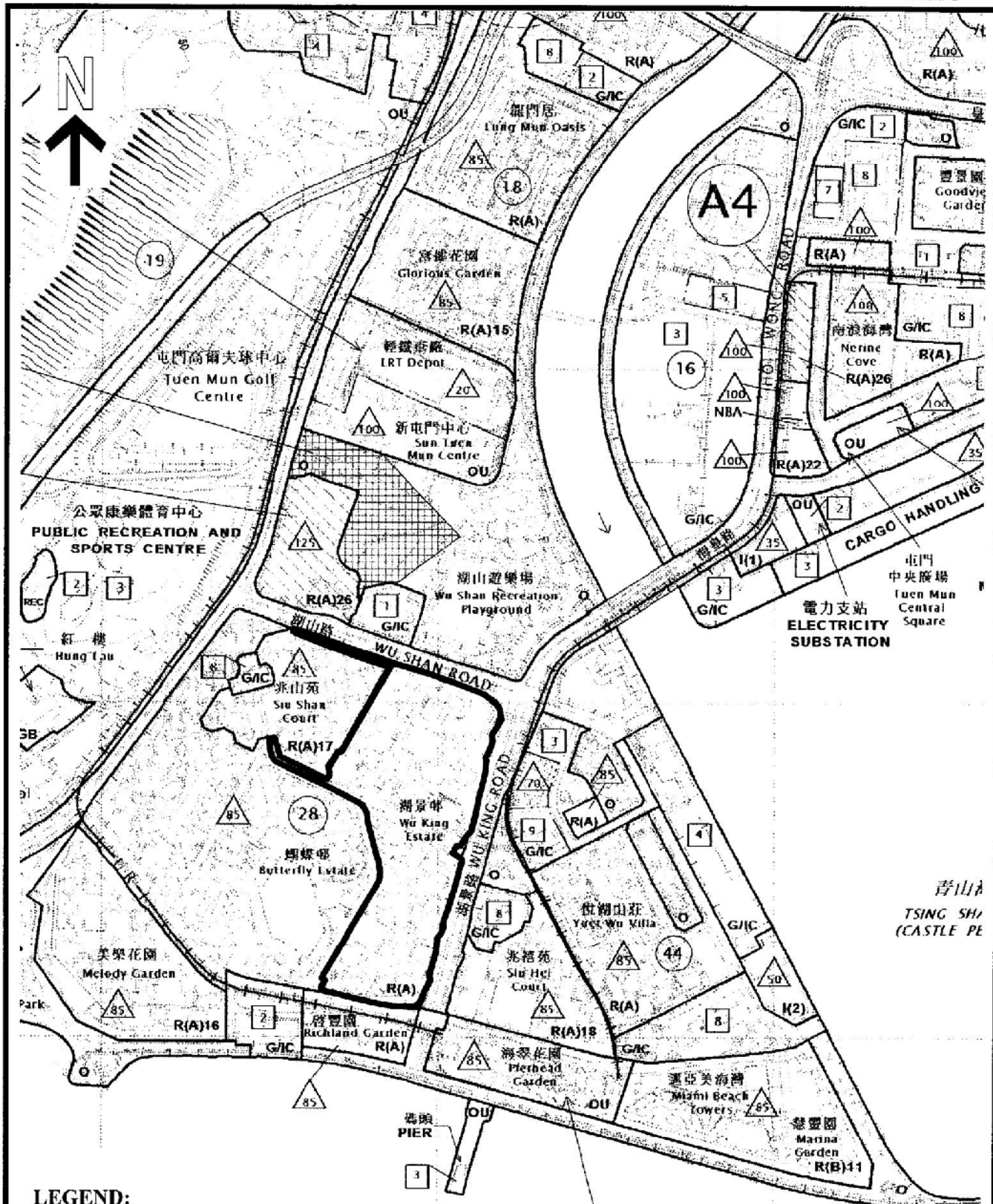


**SIU HONG COURT
LOCATION OF PARKING FACILITIES**

 **HOUSING DEPARTMENT**

參考編號 REFERENCE No. A/TM/538	繪圖 DRAWING A-2
--------------------------------	-------------------

(摘錄自申請人於9.4.2019呈交的申請書)
(Extract from Applicant's
Submission Dated 9.4.2019)



LEGEND:

— V. O. BOUNDARY (No. 104)

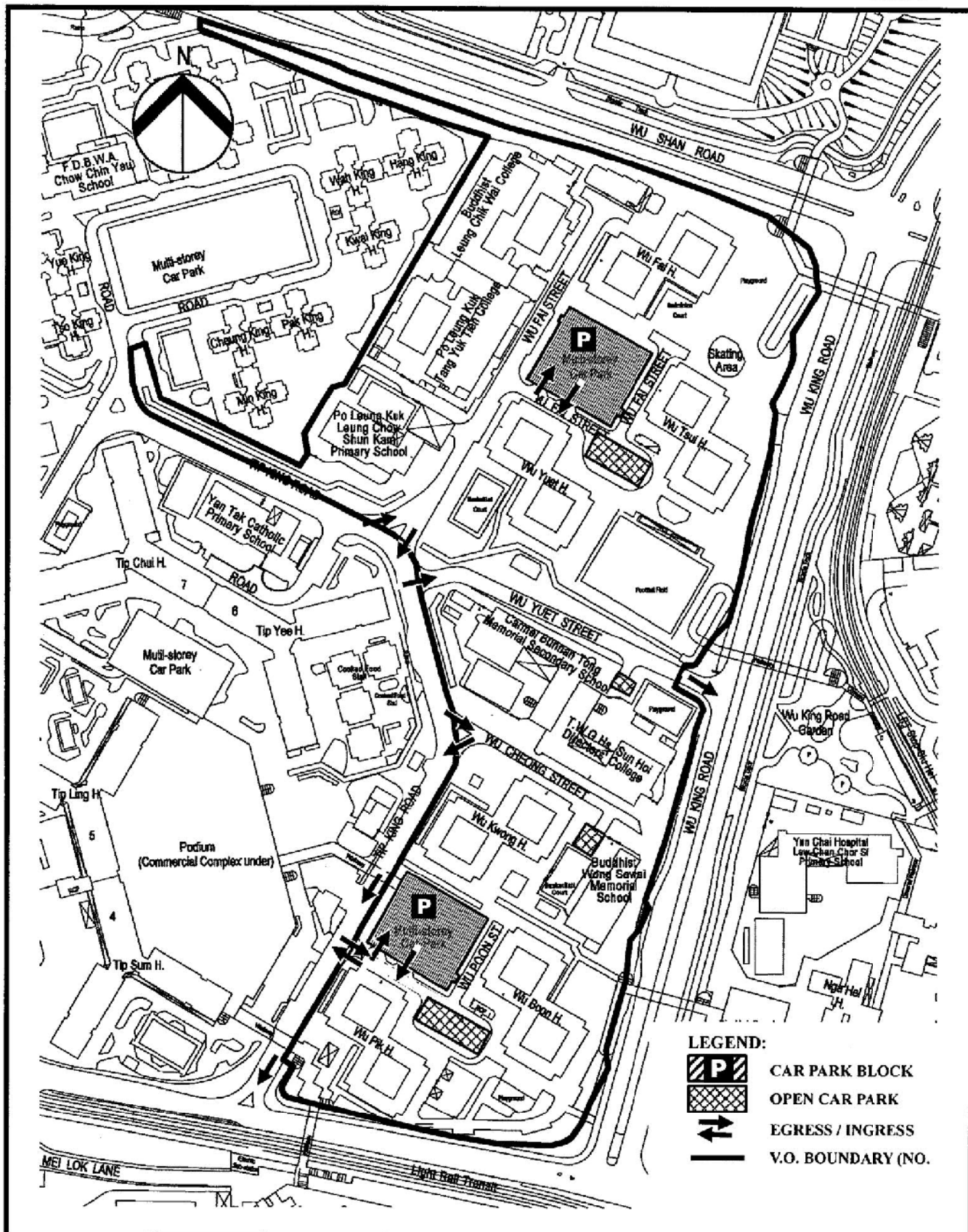
LOCATION PLAN
WU KING ESTATE



HOUSING DEPARTMENT

參考編號 REFERENCE No.	繪圖 DRAWING
A/TM/538	A-3

(摘錄自申請人於9.4.2019呈交的申請書)
(Extract from Applicant's
Submission Dated 9.4.2019)

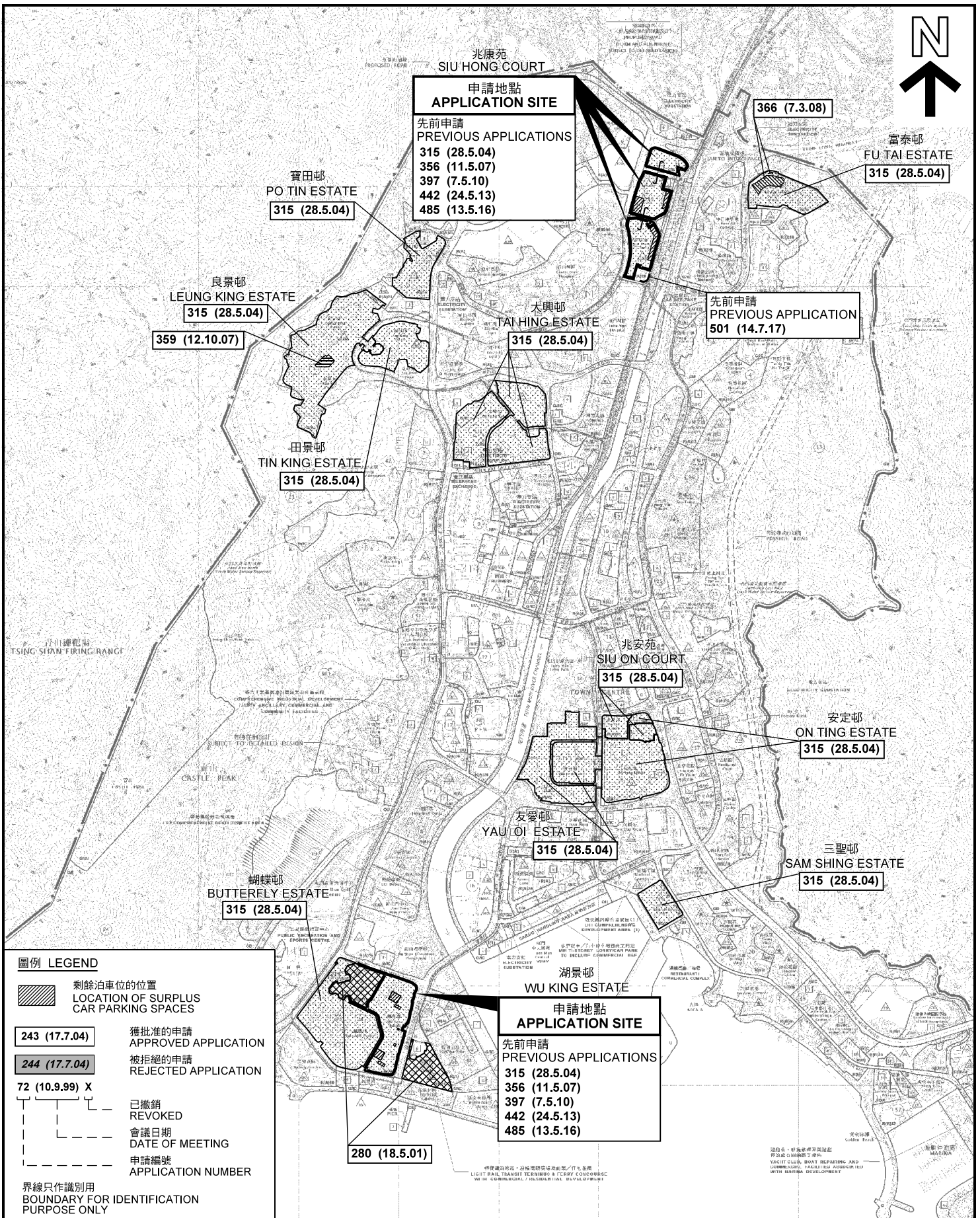


WU KING ESTATE
LOCATION OF PARKING FACILITIES

HOUSING DEPARTMENT

參考編號 REFERENCE No.	繪圖 DRAWING
A/TM/538	A-4

(摘錄自申請人於9.4.2019呈交的申請書)
(Extract from Applicant's Submission Dated 9.4.2019)



位置圖 LOCATION PLAN

位於屯門兆康苑及湖景邨臨時公眾停車場(貨櫃車除外)
(出租兆康苑及湖景邨剩餘泊車位給非住戶)及
臨時放寬總樓面面積(只屬兆康苑)(為期5年)

TEMPORARY PUBLIC VEHICLE PARK (EXCLUDING CONTAINER VEHICLE)
(LETTING OF SURPLUS PARKING SPACES IN SIU HONG COURT AND
WU KING ESTATE TO NON-RESIDENTS) AND
TEMPORARY RELAXATION OF GFA RESTRICTIONS
(FOR SIU HONG COURT) FOR A PERIOD OF 5 YEARS
AT SIU HONG COURT AND WU KING ESTATE, TUEN MUN

米 METRES 250 0 250 500 750 1000 1250 米 METRES
SCALE 1 : 25 000 比例尺

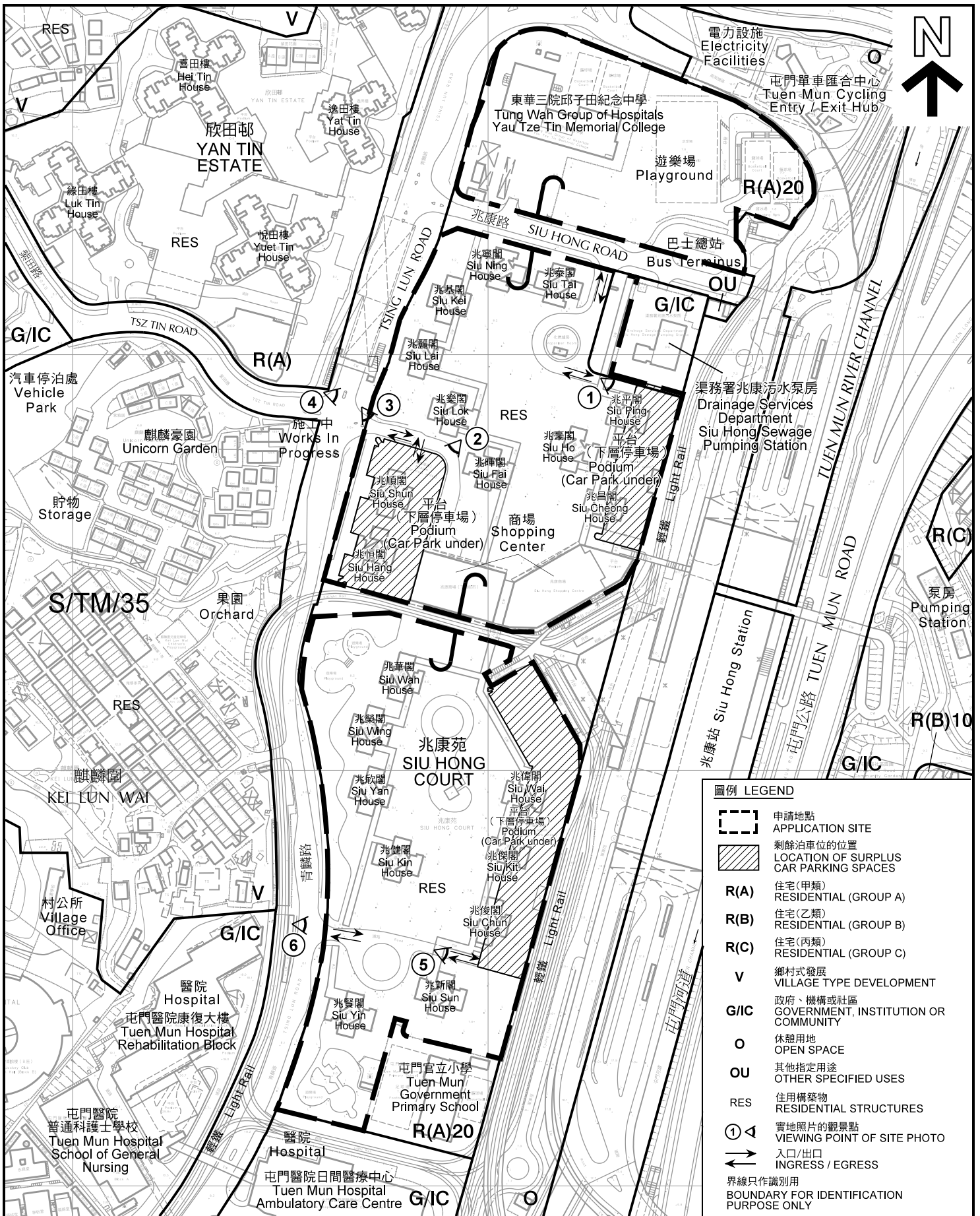
規劃署
PLANNING
DEPARTMENT



參考編號
REFERENCE No.
A/TM/538

圖 PLAN
A-1

本摘要圖於2019年4月30日擬備，
所根據的資料為於2018年12月11日
核准的分區計劃大綱圖編號 S/TM/35
EXTRACT PLAN PREPARED ON 30.4.2019
BASED ON OUTLINE ZONING PLAN No.
S/TM/35 APPROVED ON 11.12.2018



平面圖 SITE PLAN

位於屯門兆康苑及湖景邨臨時公眾停車場(貨櫃車除外)
(出租兆康苑及湖景邨剩餘泊車位給非住戶)及
臨時放寬總樓面面積(只屬兆康苑)(為期5年)

TEMPORARY PUBLIC VEHICLE PARK (EXCLUDING CONTAINER VEHICLE)
(LETTING OF SURPLUS PARKING SPACES IN SIU HONG COURT AND
WU KING ESTATE TO NON-RESIDENTS) AND
TEMPORARY RELAXATION OF GFA RESTRICTIONS
(FOR SIU HONG COURT) FOR A PERIOD OF 5 YEARS
AT SIU HONG COURT AND WU KING ESTATE, TUEN MUN
SCALE 1 : 3 000 比例尺

米 60 0 60 120 米
METRES

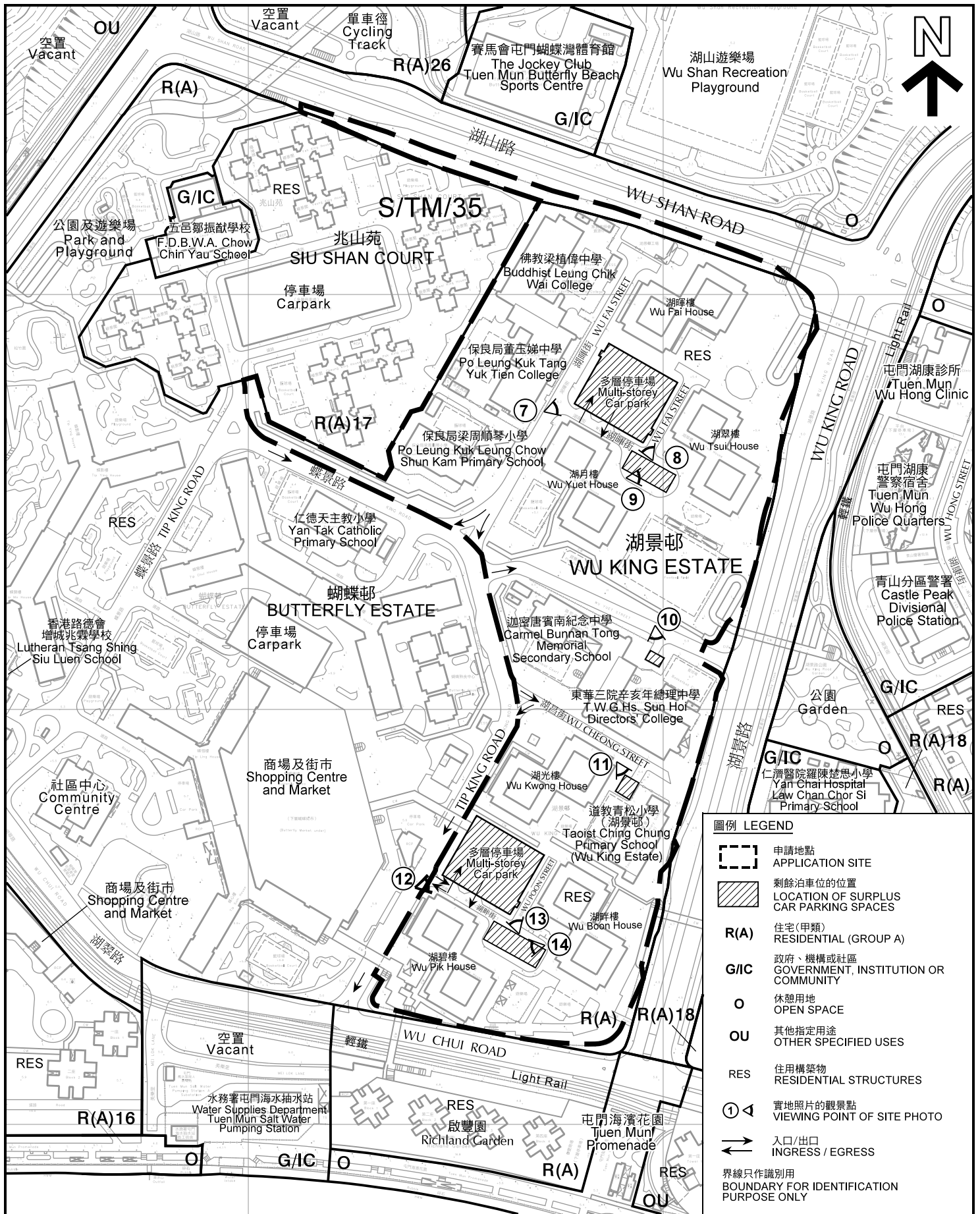
本摘要圖於2016年4月29日擬備, 所根據的資料為測量圖編號
6-NW-21A, B, C, D, 6-SW-1A和B
EXTRACT PLAN PREPARED ON 29.4.2016
BASED ON SURVEY SHEETS No.
6-NW-21A, B, C, D & 6-SW-1A & B

**規劃署
PLANNING
DEPARTMENT**



參考編號
REFERENCE No.
A/TM/538

圖 PLAN
A-2a



平面圖 SITE PLAN

位於屯門兆康苑及湖景邨臨時公眾停車場(貨櫃車除外)
(出租兆康苑及湖景邨剩餘泊車位給非住戶)及
臨時放寬總樓面面積(只屬兆康苑)(為期5年)

TEMPORARY PUBLIC VEHICLE PARK (EXCLUDING CONTAINER VEHICLE)
(LETTING OF SURPLUS PARKING SPACES IN SIU HONG COURT AND
WU KING ESTATE TO NON-RESIDENTS) AND
TEMPORARY RELAXATION OF GFA RESTRICTIONS
(FOR SIU HONG COURT) FOR A PERIOD OF 5 YEARS
AT SIU HONG COURT AND WU KING ESTATE, TUEN MUN
SCALE 1 : 3 000 比例尺

本摘要圖於2019年4月29日擬備，所根據的資料為測量圖編號 5-SE-15C, D, 20A 和 B
EXTRACT PLAN PREPARED ON 29.4.2019
BASED ON SURVEY SHEETS No.
5-SE-15C, D, 20A & B

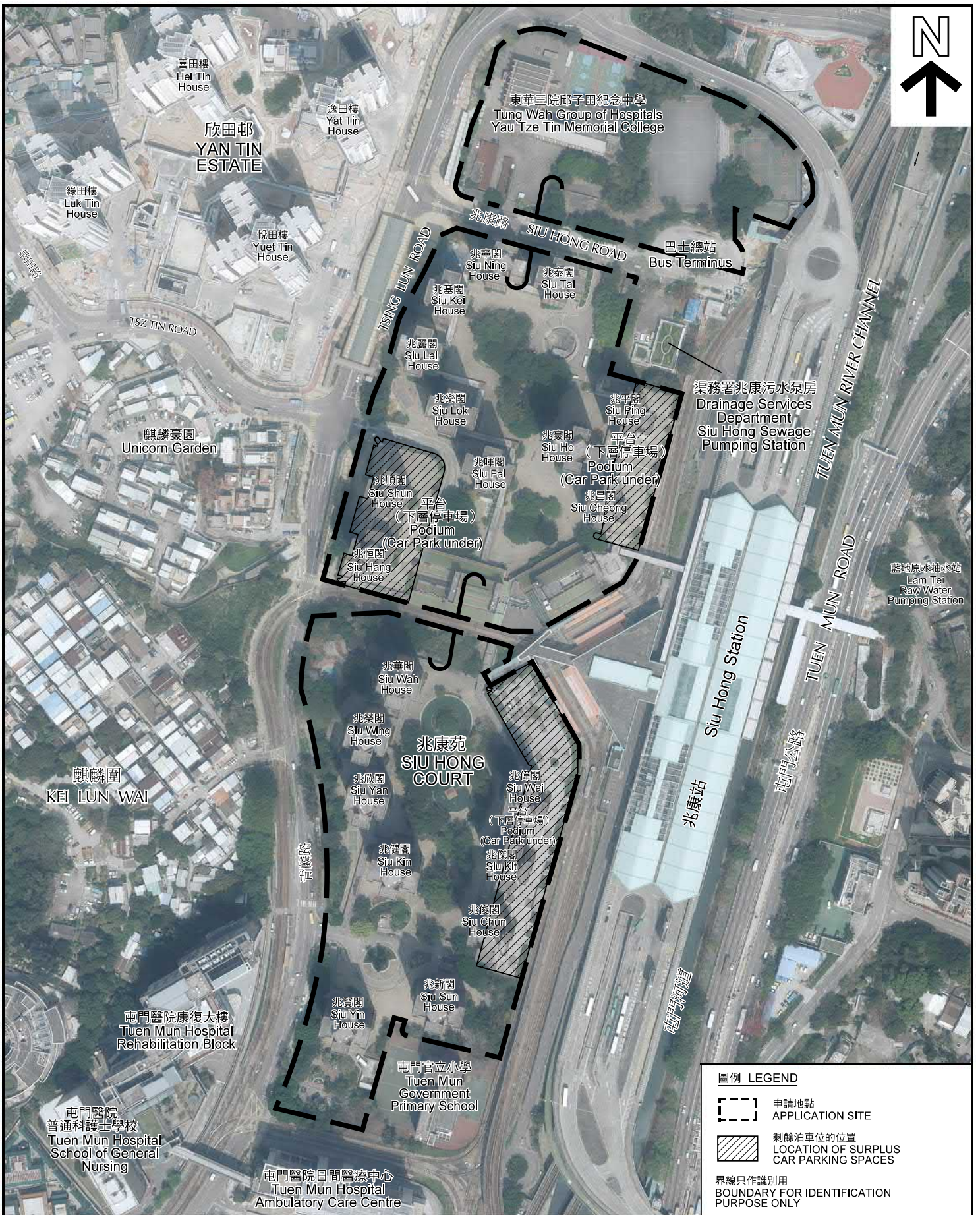
米 METRES 60 0 60 120 米 METRES

**規劃署
PLANNING
DEPARTMENT**



參考編號
REFERENCE No.
A/TM/538

**圖 PLAN
A-2b**



圖例 LEGEND

-  申請地點 APPLICATION SITE
-  剩餘泊車位的位置 LOCATION OF SURPLUS CAR PARKING SPACES

界線只作識別用
BOUNDARY FOR IDENTIFICATION PURPOSE ONLY

本摘要圖於2019年4月29日擬備，所根據的資料為地政總署於2018年3月22日拍得的航攝照片編號 E037861C
EXTRACT PLAN PREPARED ON 29.4.2019 BASED ON AERIAL PHOTO No. E037861C TAKEN ON 22.3.2018 BY LANDS DEPARTMENT

航攝照片 AERIAL PHOTO

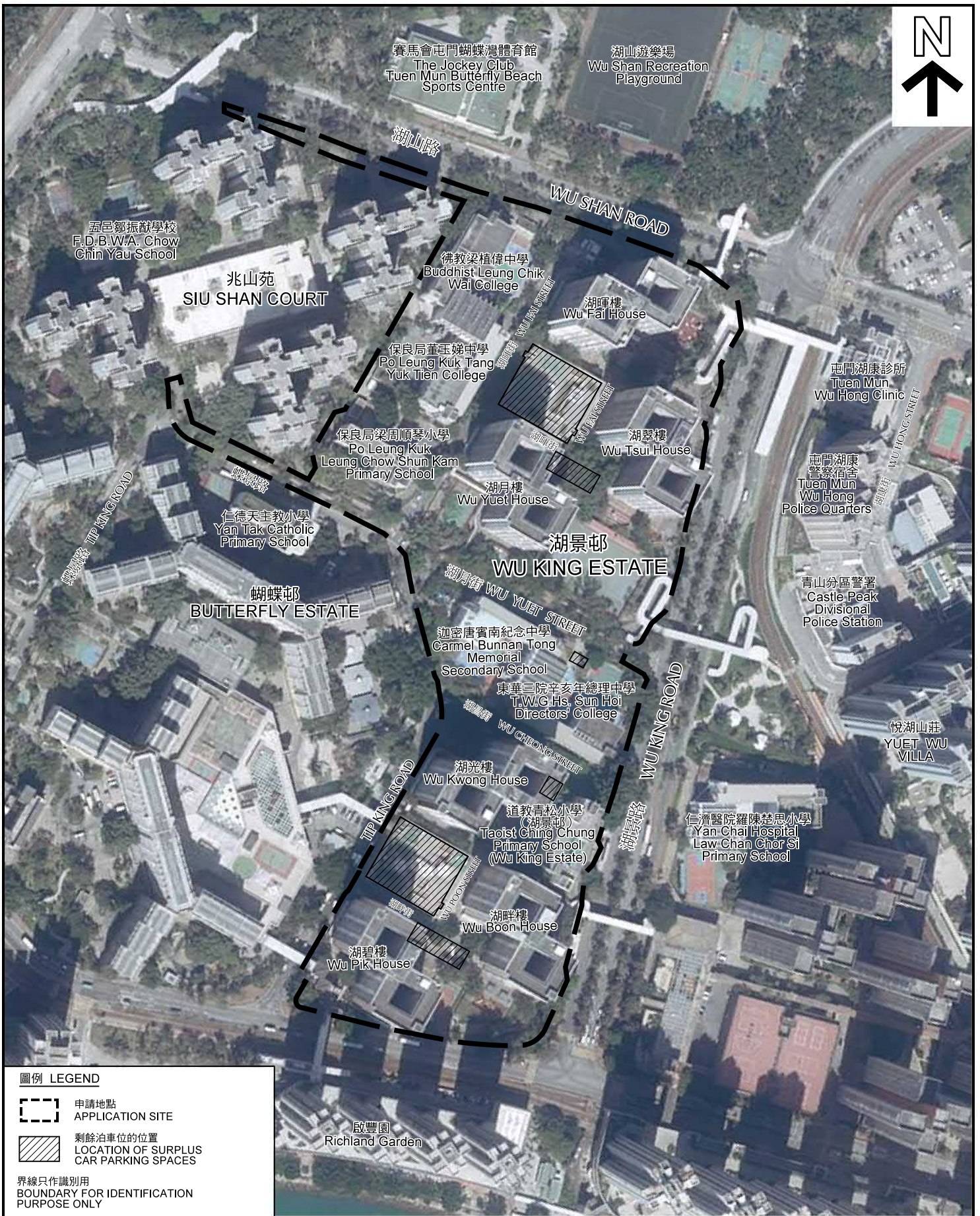
位於屯門兆康苑及湖景邨臨時公眾停車場(貨櫃車除外)
(出租兆康苑及湖景邨剩餘泊車位給非住戶)及
臨時放寬總樓面面積(只屬兆康苑)為期5年
TEMPORARY PUBLIC VEHICLE PARK (EXCLUDING CONTAINER VEHICLE)
(LETTING OF SURPLUS PARKING SPACES IN SIU HONG COURT AND
WU KING ESTATE TO NON-RESIDENTS) AND
TEMPORARY RELAXATION OF GFA RESTRICTIONS
(FOR SIU HONG COURT) FOR A PERIOD OF 5 YEARS
AT SIU HONG COURT AND WU KING ESTATE, TUEN MUN

規劃署
PLANNING
DEPARTMENT



參考編號
REFERENCE No.
A/TM/538

圖 PLAN
A-3a



圖例 LEGEND

-  申請地點
APPLICATION SITE
-  剩餘泊車位的位置
LOCATION OF SURPLUS
CAR PARKING SPACES

界線只作識別用
BOUNDARY FOR IDENTIFICATION
PURPOSE ONLY

本摘要圖於2019年4月29日擬備，所根據的資料為地政總署於2018年10月29日拍得的航攝照片編號 E048079C
EXTRACT PLAN PREPARED ON 29.4.2019
BASED ON AERIAL PHOTO No.
E048079C TAKEN ON 29.10.2018
BY LANDS DEPARTMENT

航攝照片 AERIAL PHOTO

位於屯門兆康苑及湖景邨臨時公眾停車場(貨櫃車除外)
(出租兆康苑及湖景邨剩餘泊車位給非住戶)及
臨時放寬總樓面積(只屬兆康苑)(為期5年)
TEMPORARY PUBLIC VEHICLE PARK (EXCLUDING CONTAINER VEHICLE)
(LETTING OF SURPLUS PARKING SPACES IN SIU HONG COURT AND
WU KING ESTATE TO NON-RESIDENTS) AND
TEMPORARY RELAXATION OF GFA RESTRICTIONS
(FOR SIU HONG COURT) FOR A PERIOD OF 5 YEARS
AT SIU HONG COURT AND WU KING ESTATE, TUEN MUN

規劃署
PLANNING
DEPARTMENT



參考編號
REFERENCE No.
A/TM/538

圖 PLAN
A-3b



1

兆康苑
SIU HONG COURT



2

兆康苑
SIU HONG COURT

多層停車場
Multi-storey Car Park



3

兆康苑
SIU HONG COURT

多層停車場
Multi-storey Car Park



4

兆康苑
SIU HONG COURT

多層停車場
Multi-storey Car Park

青麟路 TSING LUN ROAD



5



6

兆康苑
SIU HONG COURT

青麟路 TSING LUN ROAD

本圖於2019年4月29日擬備，所根據的資料為攝於2019年4月16日的實地照片
PLAN PREPARED ON 29.4.2019
BASED ON SITE PHOTOS
TAKEN ON 16.4.2019

實地照片 SITE PHOTO

位於屯門兆康苑及湖景邨臨時公眾停車場(貨櫃車除外)
(出租兆康苑及湖景邨剩餘泊車位給非住戶)及
臨時放寬總樓面面積(只屬兆康苑)(為期5年)
TEMPORARY PUBLIC VEHICLE PARK (EXCLUDING CONTAINER VEHICLE)
(LETTING OF SURPLUS PARKING SPACES IN SIU HONG COURT AND
WU KING ESTATE TO NON-RESIDENTS) AND
TEMPORARY RELAXATION OF GFA RESTRICTIONS
(FOR SIU HONG COURT) FOR A PERIOD OF 5 YEARS
AT SIU HONG COURT AND WU KING ESTATE, TUEN MUN

規劃署
PLANNING
DEPARTMENT



參考編號
REFERENCE No.
A/TM/538

圖 PLAN
A-4a



本圖於2019年4月29日擬備，所根據的資料為攝於2019年4月16日的實地照片
PLAN PREPARED ON 29.4.2019
BASED ON SITE PHOTOS
TAKEN ON 16.4.2019

實地照片 SITE PHOTO

位於屯門兆康苑及湖景邨臨時公眾停車場(貨櫃車除外)
(出租兆康苑及湖景邨剩餘泊車位給非住戶)及
臨時放寬總樓面面積(只屬兆康苑)(為期5年)
TEMPORARY PUBLIC VEHICLE PARK (EXCLUDING CONTAINER VEHICLE)
(LETTING OF SURPLUS PARKING SPACES IN SIU HONG COURT AND
WU KING ESTATE TO NON-RESIDENTS) AND
TEMPORARY RELAXATION OF GFA RESTRICTIONS
(FOR SIU HONG COURT) FOR A PERIOD OF 5 YEARS
AT SIU HONG COURT AND WU KING ESTATE, TUEN MUN

規 劃 署
PLANNING
DEPARTMENT



參考編號
REFERENCE No.
A/TM/538

圖 PLAN
A-4b



實地照片 SITE PHOTO

位於屯門兆康苑及湖景邨臨時公眾停車場(貨櫃車除外)
(出租兆康苑及湖景邨剩餘泊車位給非住戶)及
臨時放寬總樓面面積(只屬兆康苑)(為期5年)

TEMPORARY PUBLIC VEHICLE PARK (EXCLUDING CONTAINER VEHICLE)
(LETTING OF SURPLUS PARKING SPACES IN SIU HONG COURT AND
WU KING ESTATE TO NON-RESIDENTS) AND
TEMPORARY RELAXATION OF GFA RESTRICTIONS
(FOR SIU HONG COURT) FOR A PERIOD OF 5 YEARS
AT SIU HONG COURT AND WU KING ESTATE, TUEN MUN

規劃署
PLANNING
DEPARTMENT



參考編號
REFERENCE No.
A/TM/538

圖 PLAN
A-4c

本圖於2019年4月29日擬備，所根據的資料為攝於2019年4月16日的實地照片
PLAN PREPARED ON 29.4.2019
BASED ON SITE PHOTOS
TAKEN ON 16.4.2019