

Project:
 Section 16 Planning Application for Proposed Land Filling and Excavation of Land for Permitted New Territories Exempted Houses – Small Houses) at Various Lots at D.D. 129, Mong Tseng Wai, Lau Fau Shan, Yuen Long, New Territories

Title:
 Location Plan
 (Extract of Approved Lau Fau Shan and Tsim Bei Tsui Outline Zoning Plan No. S/YL-LFS/9)

Ref.: ADCL/PLG-10200-R001/F001

Figure:
 1

Scale:
~~1:7500~~

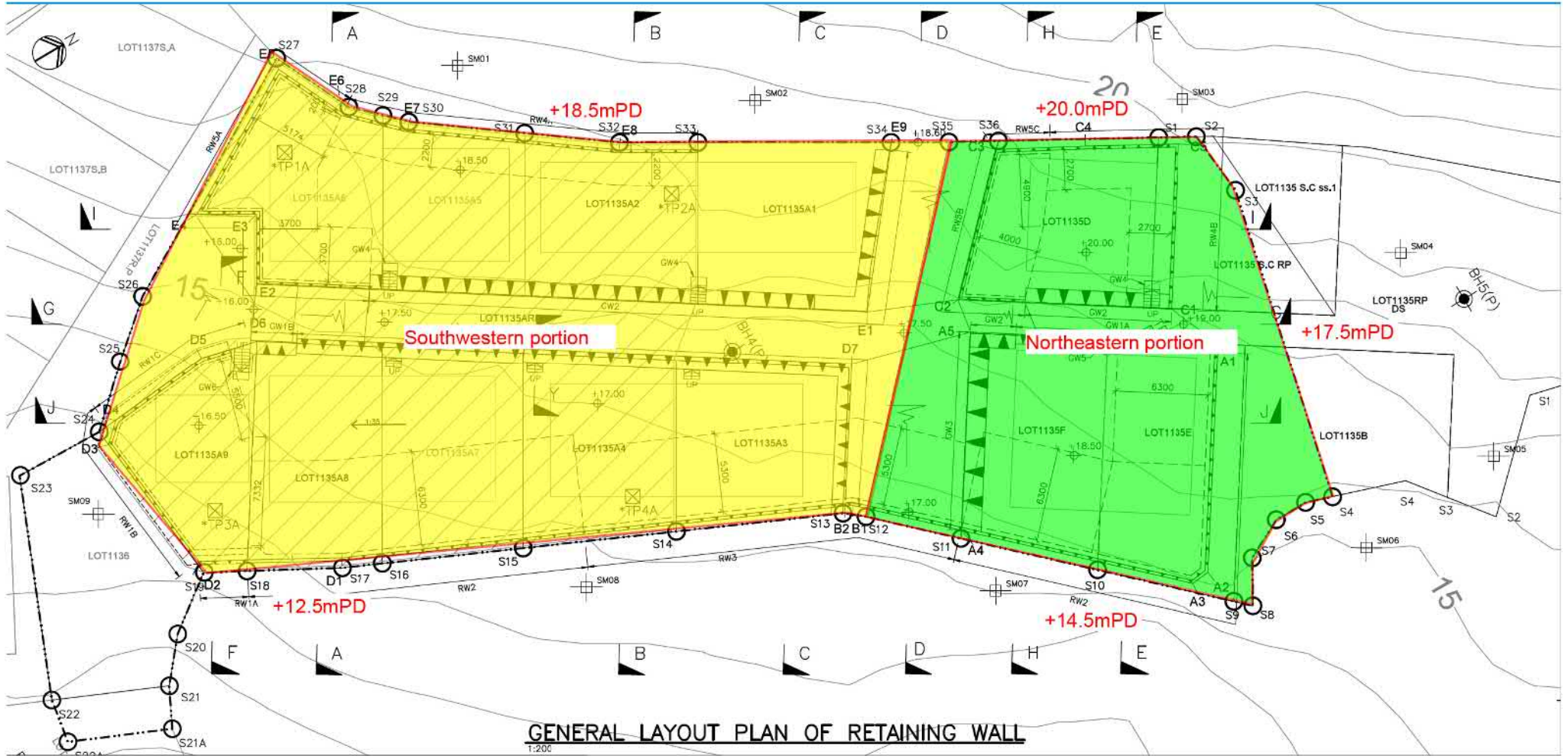
Date:
 Oct 2020



參考編號 REFERENCE No. A/YL-LFS/371	繪圖 DRAWING A-1
------------------------------------	-------------------

(摘錄自申請人於28. 8. 2020呈交的申請書)
 (Extract from Applicant's Submission Dated 28.8.2020)

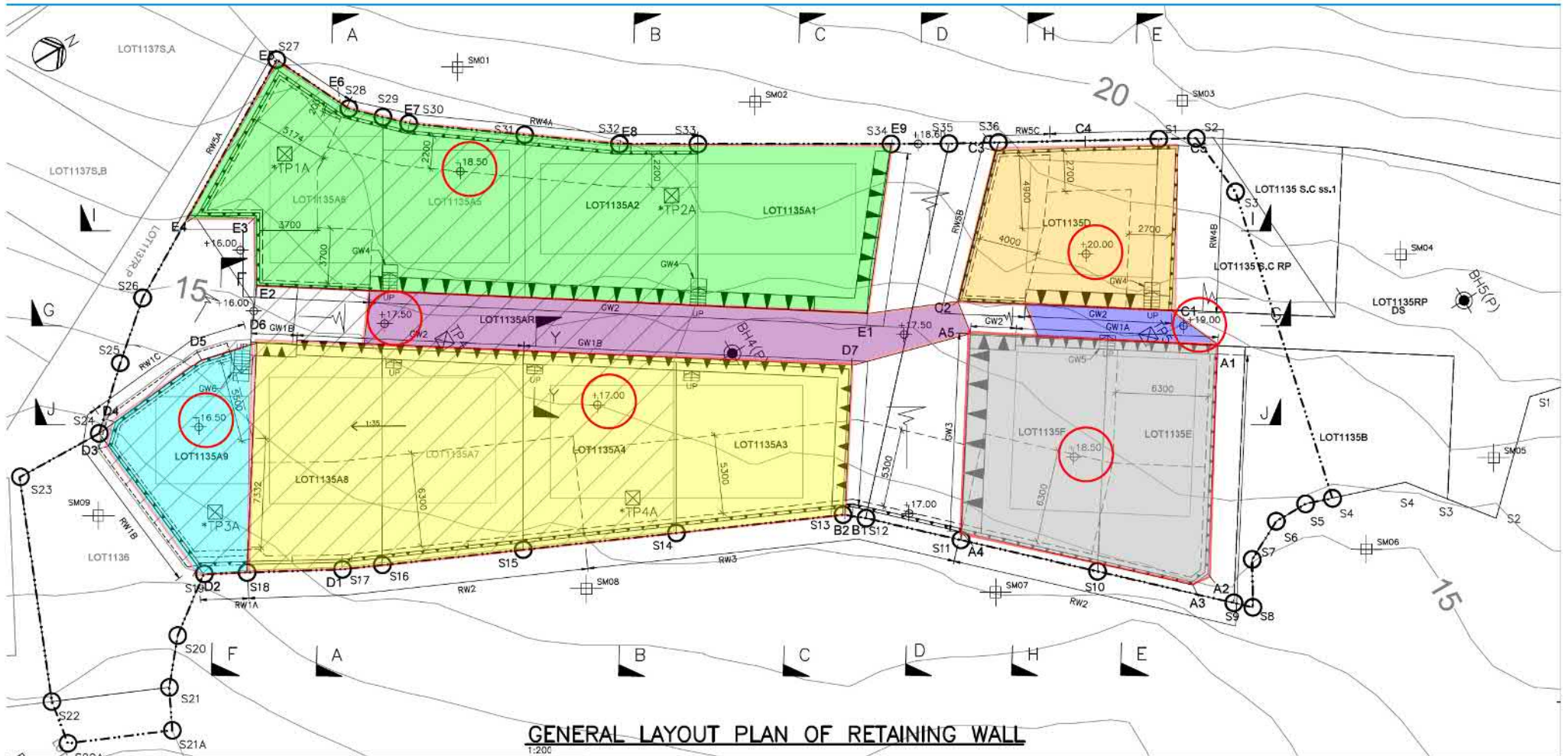
Indication Plan 1: Ground Level before Site Formation Works



參考編號 REFERENCE No. A/YL-LFS/371	繪圖 DRAWING A-2
------------------------------------	-------------------

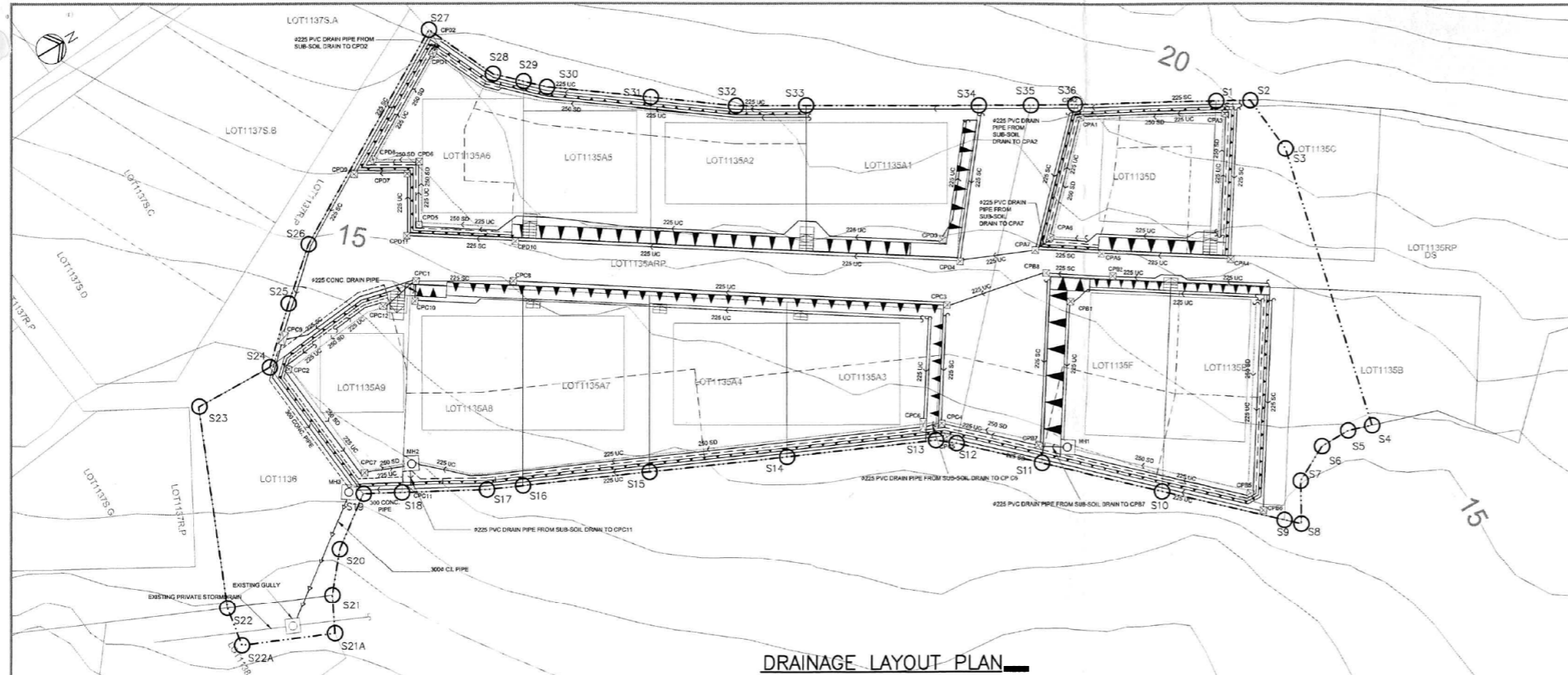
(摘錄自申請人於12. 10. 2020呈交的申請書)
(Extract from Applicant's
Submission Dated 12.10.2020)

Indication Plan 2: Ground Level after Site Formation Works

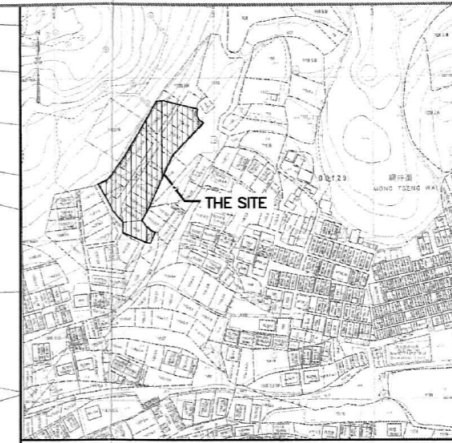


參考編號 REFERENCE No. AYL-LFS/371	繪圖 DRAWING A-3
-----------------------------------	-------------------

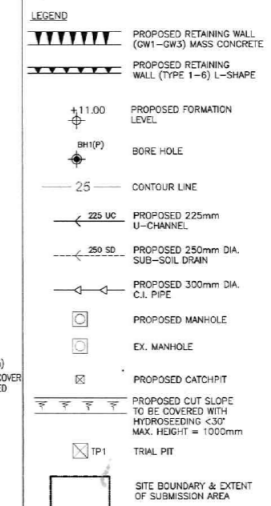
(摘錄自申請人於12. 10. 2020提交的申請書)
(Extract from Applicant's
Submission Dated 12.10.2020)



DRAINAGE LAYOUT PLAN

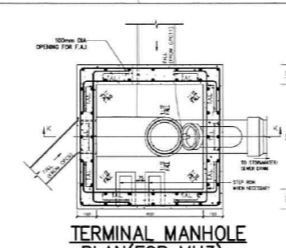


BLOCK PLAN

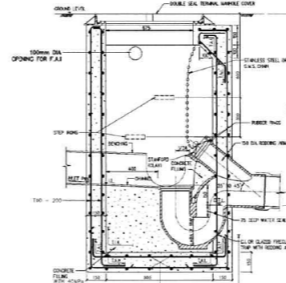


SITE BOUNDARY COORDINATES		
MARK NO.	EASTING	NORTHING
S1	818261.497	837682.475
S2	818262.364	837684.728
S3	818267.429	837685.169
S4	818268.623	837680.244
S5	818268.023	837678.484
S6	818268.023	837676.152
S7	818269.410	837673.473
S8	818262.217	837671.868
S9	818261.310	837670.914
S10	818264.767	837664.036
S11	818278.250	837657.165
S12	818273.705	837652.408
S13	818272.728	837651.201
S14	818268.059	837640.302
S15	818263.745	837631.388
S16	818269.784	837622.671
S17	818268.671	837620.196
S18	818255.981	837614.547
S19	818254.194	837612.013
S20	818256.856	837608.349
S21	818259.580	837606.080
S22	818256.368	837598.762
S23	818242.223	837604.658
S24	818242.407	837610.732
S25	818239.025	837614.384
S26	818235.983	837617.942
S27	818226.746	837633.929
S28	818232.070	837636.435
S29	818233.729	837638.123
S30	818234.998	837639.414
S31	818239.631	837645.773
S32	818243.485	837650.988
S33	818246.153	837655.551
S34	818252.781	837666.796
S35	818254.749	837670.141
S36	818256.385	837673.052
S21A	818262.177	837604.773
S22A	818259.353	837598.263

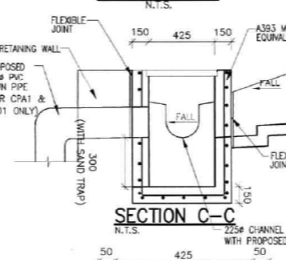
CATCHPIT NO.	CATCHPIT TYPE	APPROXIMATE COVER LEVEL (mPD)	INLET				OUTLET					
			INVERT LEVEL (mPD)	SIZE (mm)	FROM	CLASS OF INLET	DISTANCE (m)	INVERT LEVEL (mPD)	SIZE (mm)	TO	CLASS OF INLET	DISTANCE (m)
CPA1	R.C. CATCHPIT	20	19.505	225	CPA3	CONC. UC	10.528	19.484	300	CPA2	PVC DOWNPIPE	-
CPA2	R.C. CATCHPIT	20	18.250	225	CPA6	CONC. UC	8.767	19.484	300	CPA2	PVC DOWNPIPE	49.32
CPA3	R.C. CATCHPIT	18.7	18.400	225	CONC. UC	-	11.966	18.250	225	CPD2	CONC. UC	49.32
CPA4	R.C. CATCHPIT	20	19.610	225	CPA1	PVC DOWNPIPE	8.958	19.610	225	CPA1	CONC. UC	10.528
CPA5	R.C. CATCHPIT	19	18.550	225	-	CONC. UC	11.014	18.550	225	CPA5	CONC. UC	9.355
CPA6	R.C. CATCHPIT	19	18.456	225	CPA4	CONC. UC	9.355	18.456	225	CPA7	CONC. UC	4.579
CPA7	R.C. CATCHPIT	20	19.572	225	-	CONC. UC	12.792	19.572	225	CPA1	CONC. UC	8.767
CPA8	R.C. CATCHPIT	17.5	17.050	225	-	CONC. UC	10.337	17.050	225	CPD4	CONC. UC	5.18
CPB1	R.C. CATCHPIT	17.5	17.050	225	CPA5	CONC. UC	4.579	17.050	225	CPD4	CONC. UC	5.18
CPB2	R.C. CATCHPIT	18.5	18.059	225	-	CONC. UC	14.131	18.059	225	MH1	CONC. UC	10.111
CPB3	R.C. CATCHPIT	19	18.583	225	-	CONC. UC	11.722	18.583	225	CPB8	CONC. UC	4.648
CPB5	R.C. CATCHPIT	18.5	18.057	225	-	CONC. UC	14.315	18.057	225	MH1	CONC. UC	13.459
CPB6	R.C. CATCHPIT	15	14.588	225	-	CONC. UC	15.539	14.588	225	CPD5	CONC. UC	24.137
CPB7	R.C. CATCHPIT	17	16.550	225	MH1	C.I. PIPE	6.948	16.550	225	CPD4	CONC. UC	6.948
CPB8	R.C. CATCHPIT	17	16.550	225	-	CONC. UC	12.134	16.550	225	CPD4	CONC. UC	6.948
CPB8	R.C. CATCHPIT	17.5	17.050	225	CPB2	CONC. UC	4.648	17.050	225	CPD3	CONC. UC	7.336
CPD1	R.C. CATCHPIT WITH SAND TRAP	16	15.550	225	CPB8	CONC. UC	6.893	15.550	225	CPD9	CONC. UC	10.987
CPD1	R.C. CATCHPIT WITH SAND TRAP	16	15.550	225	CPD10	CONC. PIPE	-	15.550	225	CPD9	CONC. UC	10.987
CPD1	R.C. CATCHPIT WITH SAND TRAP	16	15.550	225	CPD12	CONC. PIPE	-	15.550	225	CPD9	CONC. UC	10.987
CPD2	R.C. CATCHPIT	16.5	16.174	225	-	CONC. UC	2.646	16.174	225	CPD7	CONC. UC	12.605
CPD3	R.C. CATCHPIT	17.5	16.977	225	CPB8	CONC. UC	7.336	16.977	225	CPD8	CONC. UC	32.234
CPD4	R.C. CATCHPIT	17	16.481	225	CPB7	CONC. UC	6.948	16.481	225	CPD5	CONC. UC	0.717
CPD5	R.C. CATCHPIT	17	16.550	225	-	CONC. UC	7.911	16.481	225	CPD5	CONC. UC	0.717
CPD6	R.C. CATCHPIT	14.5	14.200	225	CPB6	CONC. UC	24.137	14.088	225	CPD11	CONC. UC	39.968
CPD6	R.C. CATCHPIT	17	16.625	225	-	CONC. UC	7.539	16.473	225	MH2	CONC. UC	39.297
CPD6	R.C. CATCHPIT	17	16.473	225	CPD4	CONC. UC	0.717	16.473	225	MH2	CONC. UC	39.297
CPD7	R.C. CATCHPIT	16.5	16.047	225	CPD2	CONC. UC	12.605	16.047	250	MH2	C.I. PIPE	1.686
CPD8	R.C. CATCHPIT	17.5	16.654	225	CPD3	CONC. UC	32.234	16.654	225	CPD1	CONC. UC	6.893
CPD9	R.C. CATCHPIT	13.2	12.350	225	CPD1	CONC. UC	10.987	12.350	250	MH3	CONC. PIPE	11.541
CPD9	R.C. CATCHPIT	13.2	12.350	225	CPD9	CONC. UC	14.512	12.350	250	MH3	CONC. PIPE	11.541
CPD10	R.C. CATCHPIT	16.5	15.814	225	-	CONC. UC	38.584	15.814	225	CPD1	CONC. PIPE	-
CPD11	R.C. CATCHPIT WITH SAND TRAP	12.5	11.814	225	MH2	C.I. PIPE	38.584	11.814	225	MH3	CONC. PIPE	4.050
CPD12	R.C. CATCHPIT	12.5	11.814	225	CPD5	CONC. UC	38.584	11.814	225	MH3	CONC. PIPE	4.050
CPD12	R.C. CATCHPIT	18.5	15.961	225	-	CONC. UC	3.904	15.961	225	CPD1	CONC. PIPE	-
CPD1	R.C. CATCHPIT	18.5	17.705	225	-	CONC. UC	29.198	17.705	300	CPD2	PVC DOWNPIPE	-
CPD1	R.C. CATCHPIT	18.5	17.635	225	CPD8	CONC. UC	8.637	17.635	300	CPD2	PVC DOWNPIPE	-
CPD2	R.C. CATCHPIT	17	16.277	225	CPD1	PVC DOWNPIPE	-	16.277	225	CPD9	CONC. UC	11.360
CPD2	R.C. CATCHPIT	17	16.277	225	CPA2	CONC. UC	49.32	16.277	225	CPD9	CONC. UC	11.360
CPD3	R.C. CATCHPIT	18.5	18.111	225	-	CONC. UC	8.941	18.111	225	CPD5	CONC. UC	40.572
CPD4	R.C. CATCHPIT	17.5	16.998	225	CPA7	CONC. UC	5.180	16.998	225	CPD10	CONC. UC	33.092
CPD4	R.C. CATCHPIT	17.5	17.050	225	-	CONC. UC	10.867	17.050	225	CPD10	CONC. UC	33.092
CPD5	R.C. CATCHPIT	18.5	17.794	225	CPD3	CONC. UC	40.572	17.794	225	CPD6	CONC. UC	4.260
CPD6	R.C. CATCHPIT	18.5	17.752	225	CPD5	CONC. UC	4.260	17.752	225	CPD8	CONC. UC	3.041
CPD7	R.C. CATCHPIT	16	15.508	225	CPD11	CONC. UC	3.440	15.508	225	CPD9	CONC. UC	3.491
CPD8	R.C. CATCHPIT	18.5	17.721	225	CPD6	CONC. UC	3.041	17.721	225	CPD1	CONC. UC	8.637
CPD9	R.C. CATCHPIT WITH SAND TRAP	16	15.473	225	CPD7	CONC. UC	3.491	15.473	225	CPD9	CONC. UC	14.508
CPD9	R.C. CATCHPIT WITH SAND TRAP	16	15.150	225	CPD2	CONC. UC	11.360	15.150	225	CPD9	CONC. UC	14.508
CPD10	R.C. CATCHPIT	17.5	16.667	225	CPD4	CONC. UC	33.092	16.667	225	CPD11	CONC. UC	7.652
CPD11	R.C. CATCHPIT	16	15.550	225	CPD10	CONC. UC	7.652	15.550	225	CPD7	CONC. UC	4.178
MH1	BACKDROP MANHOLE TYPE 3 WITH TRAP	18.5	17.958	225	CPB1	CONC. UC	10.111	17.922	300	CPB7	C.I. PIPE	-
MH2	BACKDROP MANHOLE TYPE 3 WITH TRAP	16.5	16.031	225	CPB5	CONC. UC	13.459	17.922	300	CPB7	C.I. PIPE	-
MH2	BACKDROP MANHOLE TYPE 3 WITH TRAP	16.5	16.080	225	CPD7	CONC. UC	1.686	16.031	300	CPD11	C.I. PIPE	-
MH3	TERMINAL MANHOLE TYPE T1	12.2	11.196	300	CPD9	CONC. PIPE	11.541	-	300	PUBLIC	C.I. PIPE	9.748
MH3	TERMINAL MANHOLE TYPE T1	12.2	11.652	300	CPD11	CONC. PIPE	4.050	11.046	300	PUBLIC	C.I. PIPE	9.748



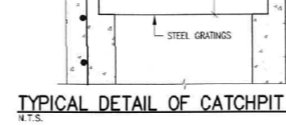
TERMINAL MANHOLE PLAN (FOR MH3)



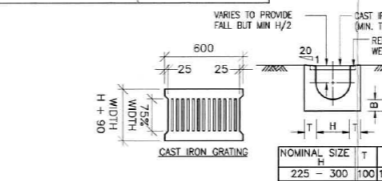
SECTION K-K



SECTION C-C



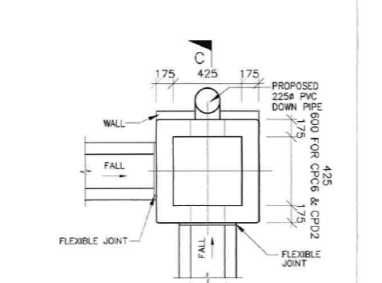
TYPICAL DETAIL OF CATCHPIT COVER



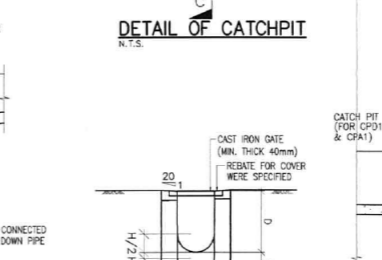
U-CHANNEL ON FLAT GROUND

DETAILS OF U-CHANNELS

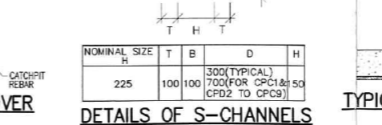
N.T.S. NOTE: ALL EXPOSED CORNER TO BE 25x25 CHAMFER.



DETAIL OF CATCHPIT



TYPICAL DETAIL OF BACKDROP MANHOLE



TYPICAL DETAIL OF DOWNPIPE

REV.	DATE	DESCRIPTION	DRAWN	CHECKED/APPROVED

ALL DIMENSIONS MUST BE CHECKED AT THE SITE - DO NOT SCALE DRAWING. ALL DIMENSIONS SPECIFICATIONS AND TRADE COPY RIGHT ARE THE PROPERTY OF ENGINEER, ARCHITECTS, DESIGNERS AND SHALL BE RETURNED AT THE COMPLETION OF THE WORK - THIS DRAWING IS NOT VALID FOR CONSTRUCTION PURPOSES UNLESS CORRECTLY CERTIFIED.

SIGNATURE FOR SUBMISSION/ CONSTRUCTION

PROJECT NO:	P17025
DRAWN BY:	KEITH
DESIGNED BY:	JC
CHECKED BY:	MM
APPROVED BY:	VT
SCALE:	
CAD FILE:	

PROJECT: SMALL HOUSES IN D.D. 129, WONG TSENG TSUEN, Lot 1135 S.A. as 1 to as 9 & S.A. RP, 1135 S.B, Lot 1135 S.C. as 1 & S.C. RP, Lot 1135 S.D, Lot 1135 S.E. Lot 1135 S.F, Lot 1135 S.RP Lot 1136, Lot 1138, PING SHAN HEUNG, YUEN LONG, N.T., HONG KONG

DRAWING TITLE: SITE FORMATION PLAN DRAINAGE PLAN AND SCHEDULE

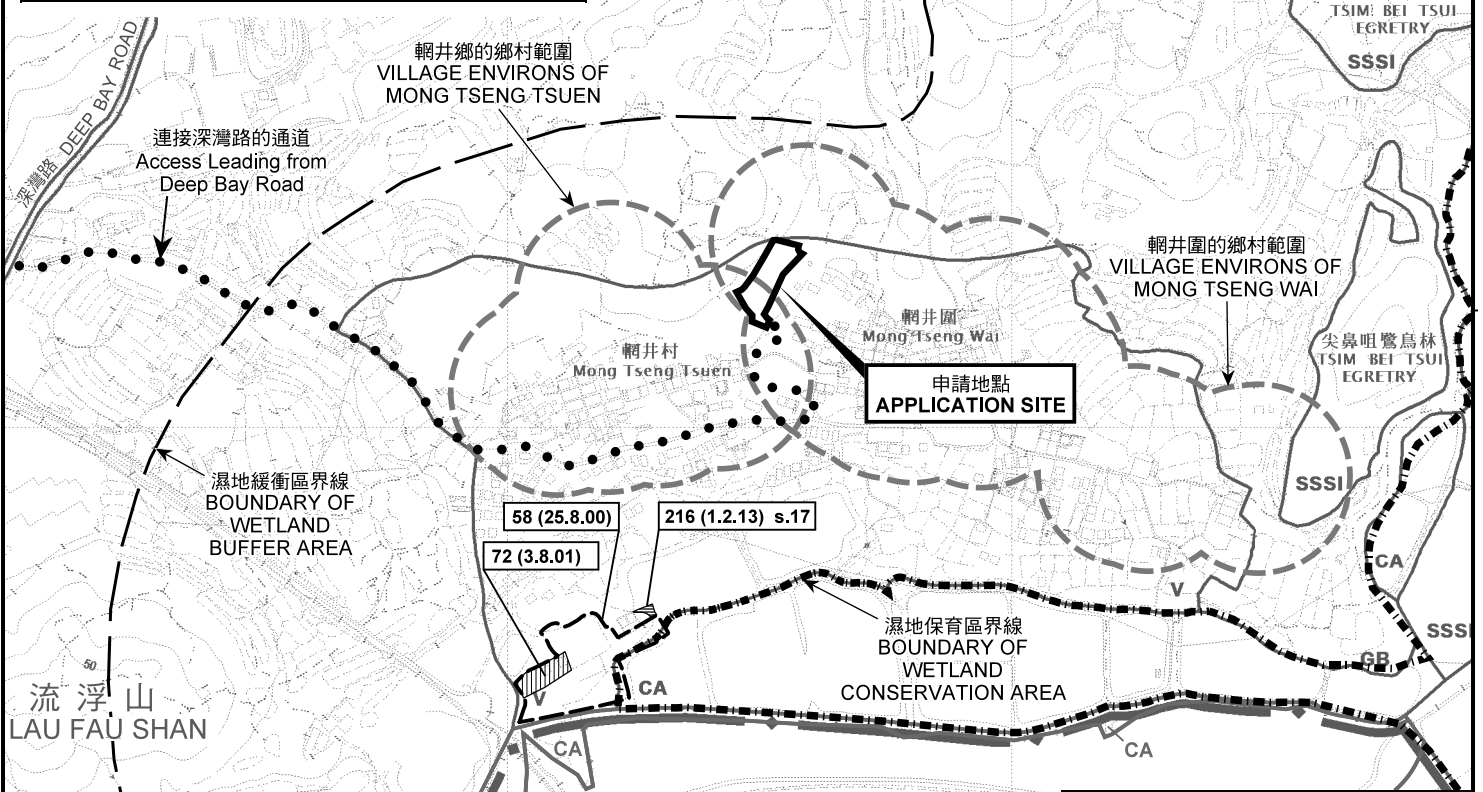
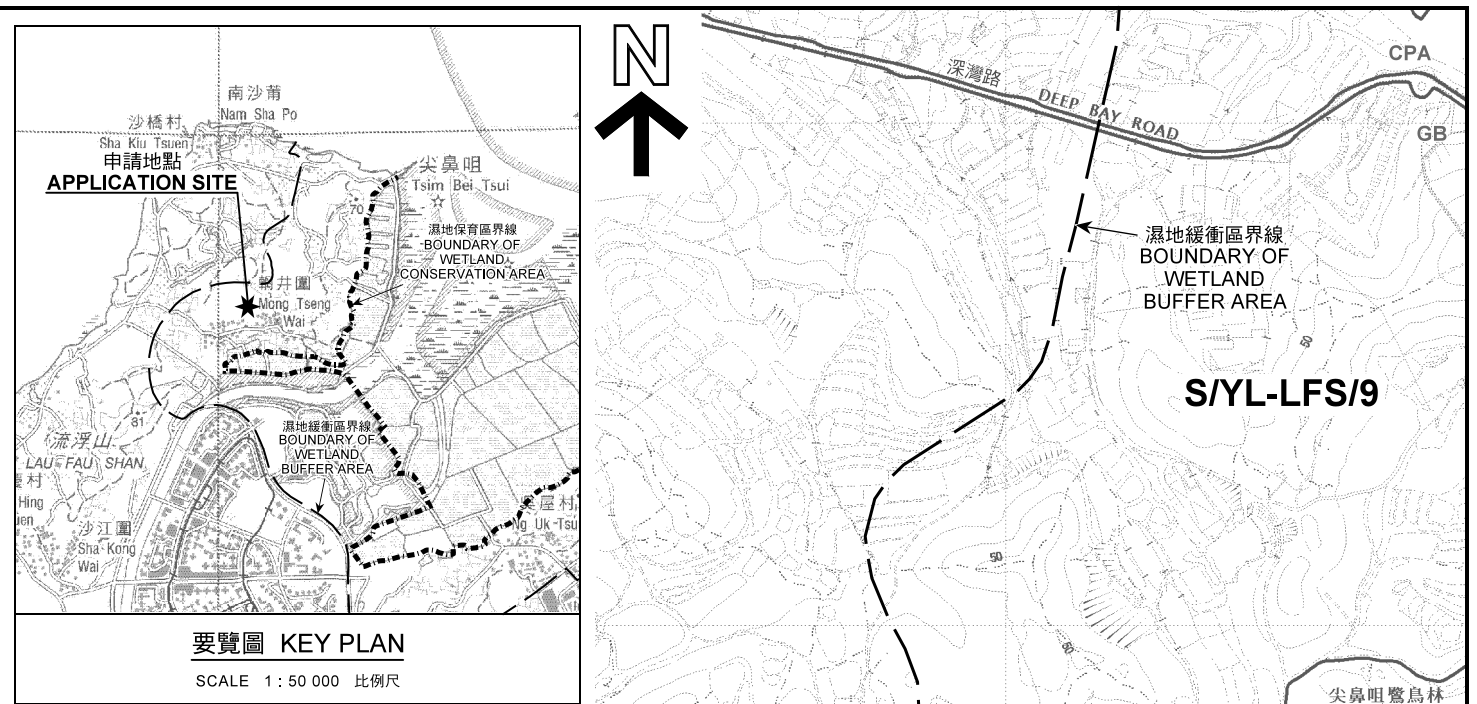
DRAWING NO:	P17023/SF/104
REV:	-



Ref.: ADCL/PLG-10200-R001/F007

參考編號 REFERENCE No.	繪圖 DRAWING
A/YL-LFS/371	A-4

(Extract from Applicant's Submission Dated 28.8.2020)



圖例 LEGEND

243 (17.7.04)	獲批准的申請 APPROVED APPLICATION
244 (17.7.04)	被拒絕的申請 REJECTED APPLICATION
72 (10.9.99) X	已撤銷 REVOKED
---	會議日期 DATE OF MEETING
---	申請編號 APPLICATION NUMBER

申請地點界線只作識別用
APPLICATION SITE BOUNDARY
FOR IDENTIFICATION PURPOSE ONLY

本摘要圖於2020年10月7日擬備，所根據的資料為於2018年10月16日核准的分區計劃大綱圖編號 S/YL-LFS/9 EXTRACT PLAN PREPARED ON 7.10.2020 BASED ON OUTLINE ZONING PLAN No. S/YL-LFS/9 APPROVED ON 16.10.2018

位置圖 LOCATION PLAN

擬填土及挖土以作准許的屋宇 (新界豁免管制屋宇-小型屋宇) 用途
 新界元朗流浮山輞井村丈量約份第129約地段第1135 號A分段第1小分段、第1135號A分段第2小分段、第1135號A分段第3小分段、第1135號A分段第4小分段、第1135號A分段第5小分段、第1135號A分段第6小分段、第1135號A分段第7小分段、第1135號A分段第8小分段、第1135號A分段第9小分段、第1135號A分段餘段、第1135號B分段(部分)、第1135號C分段餘段(部分)、第1135號D分段、第1135號E分段、第1135號F分段、第1135號餘段(部分)及第1136號

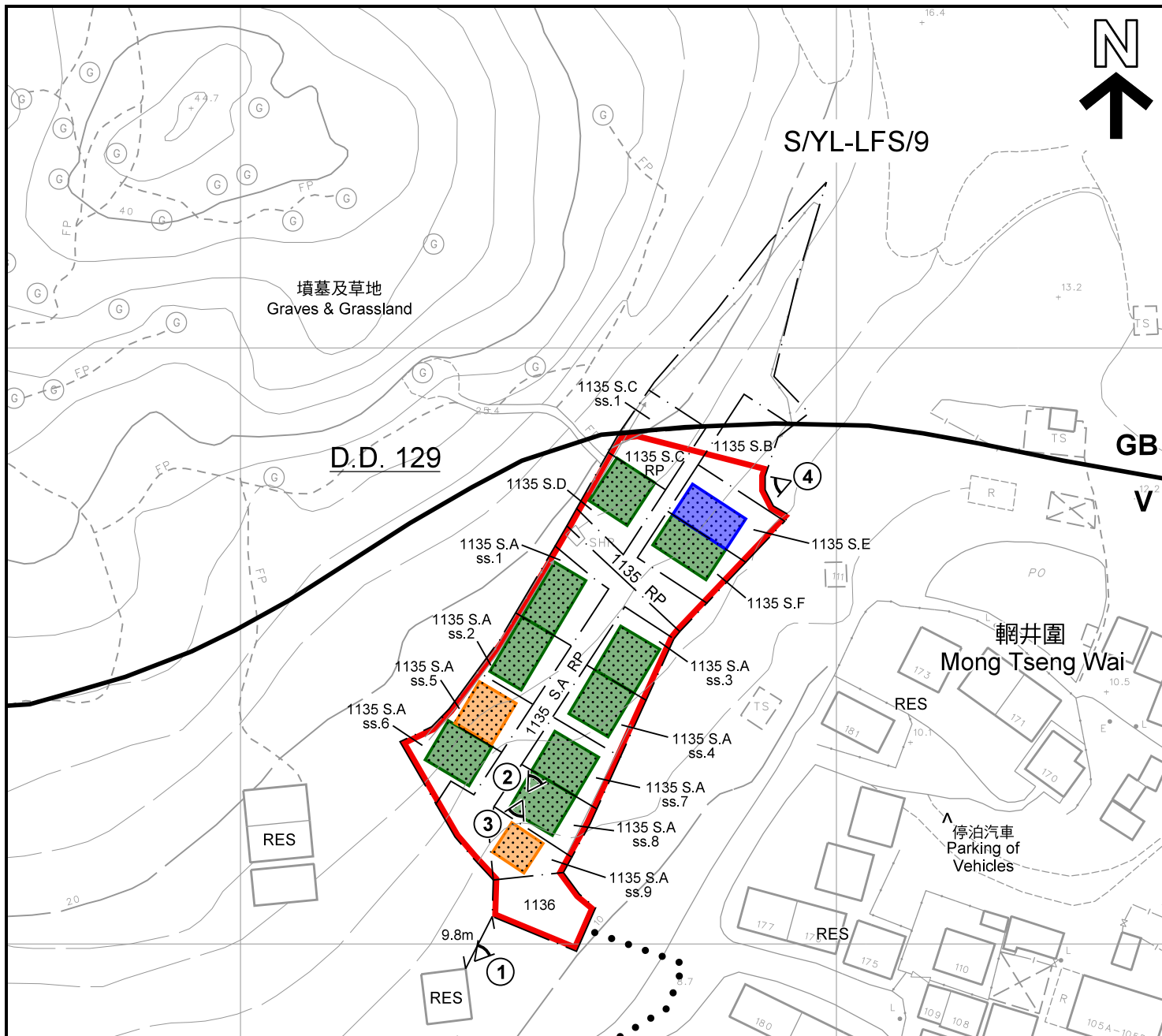
PROPOSED FILLING AND EXCAVATION OF LAND FOR PERMITTED HOUSE (NEW TERRITORIES EXEMPTED HOUSE - SMALL HOUSE) USE
 LOTS 1135 S.A SS.1, 1135 S.A SS.2, 1135 S.A SS.3, 1135 S.A SS.4, 1135 S.A SS.5, 1135 S.A SS.6, 1135 S.A SS.7, 1135 S.A SS.8, 1135 S.A SS.9, 1135 S.A RP, 1135 S.B (PART), 1135 S.C RP (PART), 1135 S.D, 1135 S.E, 1135 S.F, 1135 RP (PART) AND 1136 IN D.D. 129, MONG TSENG TSUEN, LAU FAU SHAN, YUEN LONG, N.T.
 SCALE 1 : 7 500 比例尺

米 100 0 100 200 300 米
METRES

**規劃署
PLANNING
DEPARTMENT**

參考編號
REFERENCE No.
AYL-LFS/371

**圖 PLAN
A-1**



註釋 Notes :

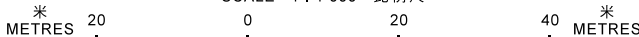
- (1) 2020年9月4日勘測的土地用途
Land uses shown on this plan are in accordance with the land use survey conducted by the Planning Department on 4.9.2020
- (2) * 土地用途跟1992年3月勘測的土地用途一致
Indicates that the use is the same as that revealed by the land use survey conducted by the Planning Department in Mar 1992
- (3) ^ 土地用途跟1992年3月勘測的土地用途有別
Indicates that the use is different from that revealed by the land use survey conducted by the Planning Department in Mar 1992

圖例 LEGEND

- 申請地點(界線只作識別用)
APPLICATION SITE (BOUNDARY FOR IDENTIFICATION PURPOSE ONLY)
- 擬議小型屋宇批地申請
PROPOSED SMALL HOUSE
- 獲地政總署批准的小型屋宇批地申請
APPROVED SMALL HOUSE APPLICATION BY LANDS DEPARTMENT
- 地政總署正在處理中的小型屋宇批地申請
SMALL HOUSE APPLICATION UNDER PROCESSING BY LANDS DEPARTMENT
- 鄉村式發展
VILLAGE TYPE DEVELOPMENT
- 綠化地帶
GREEN BELT
- 住用構築物
RESIDENTIAL STRUCTURES
- 實地照片的觀景點
VIEWING POINT OF SITE PHOTO

平面圖 SITE PLAN

擬議填土及挖土以作准許的屋宇(新界豁免管制屋宇-小型屋宇)用途
 新界元朗流浮山輞井村丈量約份第129約地段第1135 號A分段第1小分段、第1135號A分段第2小分段、第1135號A分段第3小分段、
 第1135號A分段第4小分段、第1135號A分段第5小分段、第1135號A分段第6小分段、第1135號A分段第7小分段、
 第1135號A分段第8小分段、第1135號A分段第9小分段、第1135號A分段第10小分段、第1135號B分段(部分)、
 第1135號C分段餘段(部分)、第1135號D分段、第1135號E分段、第1135號F分段、第1135號餘段(部分)及第1136號
 PROPOSED FILLING AND EXCAVATION OF LAND FOR PERMITTED HOUSE
 (NEW TERRITORIES EXEMPTED HOUSE - SMALL HOUSE) USE
 LOTS 1135 S.A SS.1, 1135 S.A SS.2, 1135 S.A SS.3, 1135 S.A SS.4, 1135 S.A SS.5,
 1135 S.A SS.6, 1135 S.A SS.7, 1135 S.A SS.8, 1135 S.A SS.9, 1135 S.A RP, 1135 S.B (PART),
 1135 S.C RP (PART), 1135 S.D, 1135 S.E, 1135 S.F, 1135 RP (PART) AND
 1136 IN D.D. 129, MONG TSENG TSUEN, LAU FAU SHAN, YUEN LONG, N.T.
 SCALE 1 : 1 000 比例尺



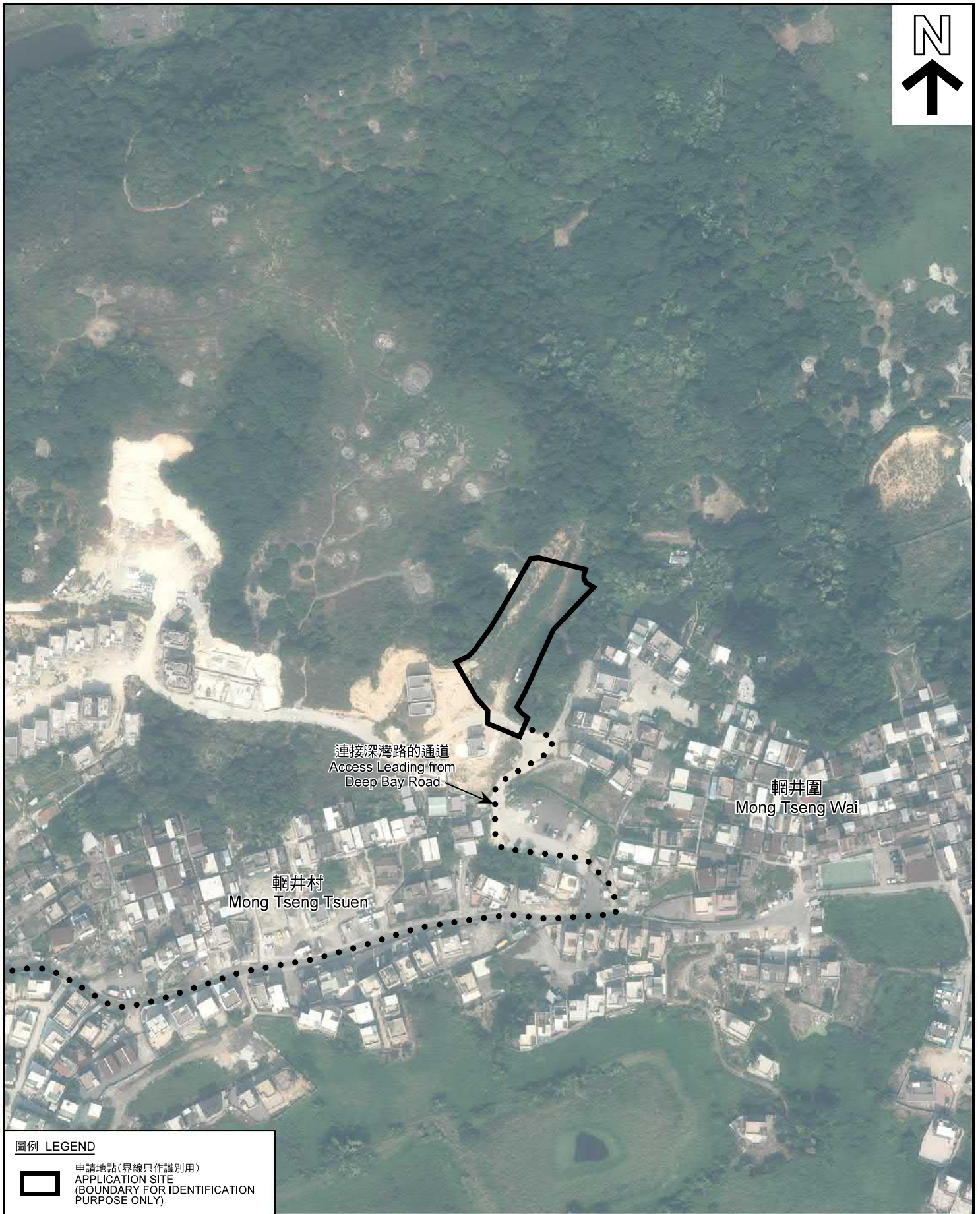
本摘要圖於2020年10月19日擬備，所根據的資料為測量圖編號 2-SW-18C
 EXTRACT PLAN PREPARED ON 19.10.2020
 BASED ON SURVEY SHEET No. 2-SW-18C

**規劃署
PLANNING
DEPARTMENT**



參考編號
REFERENCE No.
A/YL-LFS/371

圖 PLAN
A-2



圖例 LEGEND



申請地點(界線只作識別用)
APPLICATION SITE
(BOUNDARY FOR IDENTIFICATION
PURPOSE ONLY)

本摘要圖於2020年10月7日擬備，所根據的資料為地政總署於2019年11月14日拍得的航攝照片編號 E078444C
EXTRACT PLAN PREPARED ON 7.10.2020
BASED ON AERIAL PHOTO No.
E078444C TAKEN ON 14.11.2019
BY LANDS DEPARTMENT

航攝照片 AERIAL PHOTO

擬議填土及挖土以作准許的屋宇(新界豁免管制屋宇-小型屋宇)用途
新界元朗流浮山輞井村丈量約份第129約地段第1135 號A分段第1小分段、第1135號A分段第2小分段、第1135號A分段第3小分段、
第1135號A分段第4小分段、第1135號A分段第5小分段、第1135號A分段第6小分段、第1135號A分段第7小分段、
第1135號A分段第8小分段、第1135號A分段第9小分段、第1135號A分段餘段、第1135號B分段(部分)、
第1135號C分段餘段(部分)、第1135號D分段、第1135號E分段、第1135號F分段、第1135號餘段(部分)及第1136號
PROPOSED FILLING AND EXCAVATION OF LAND FOR PERMITTED HOUSE
(NEW TERRITORIES EXEMPTED HOUSE - SMALL HOUSE) USE
LOTS 1135 S.A SS.1, 1135 S.A SS.2, 1135 S.A SS.3, 1135 S.A SS.4, 1135 S.A SS.5,
1135 S.A SS.6, 1135 S.A SS.7, 1135 S.A SS.8, 1135 S.A SS.9, 1135 S.A RP, 1135 S.B (PART),
1135 S.C RP (PART), 1135 S.D, 1135 S.E, 1135 S.F, 1135 RP (PART) AND
1136 IN D.D. 129, MONG TSENG TSUEN, LAU FAU SHAN, YUEN LONG, N.T.

規劃署
PLANNING
DEPARTMENT



參考編號
REFERENCE No.
A/YL-LFS/371

圖 PLAN
A-3



申請地點
APPLICATION SITE



申請地點
APPLICATION SITE



申請地點
APPLICATION SITE



申請地點
APPLICATION SITE

申請地點界線只作識別用
APPLICATION SITE BOUNDARY FOR IDENTIFICATION PURPOSE ONLY

實地照片 SITE PHOTO

擬議填土及挖土以作准許的屋宇（新界豁免管制屋宇-小型屋宇）用途

新界元朗流浮山觀井村丈量約份第129約地段第1135 號A分段第1小分段、第1135號A分段第2小分段、第1135號A分段第3小分段、第1135號A分段第4小分段、第1135號A分段第5小分段、第1135號A分段第6小分段、第1135號A分段第7小分段、第1135號A分段第8小分段、第1135號A分段第9小分段、第1135號A分段餘段、第1135號B分段（部分）、第1135號C分段餘段（部分）、第1135號D分段、第1135號E分段、第1135號F分段、第1135號餘段（部分）及第1136號

PROPOSED FILLING AND EXCAVATION OF LAND FOR PERMITTED HOUSE (NEW TERRITORIES EXEMPTED HOUSE - SMALL HOUSE) USE

LOTS 1135 S.A SS.1, 1135 S.A SS.2, 1135 S.A SS.3, 1135 S.A SS.4, 1135 S.A SS.5, 1135 S.A SS.6, 1135 S.A SS.7, 1135 S.A SS.8, 1135 S.A SS.9, 1135 S.A RP, 1135 S.B (PART), 1135 S.C RP (PART), 1135 S.D, 1135 S.E, 1135 S.F, 1135 RP (PART) AND 1136 IN D.D. 129, MONG TSENG TSUEN, LAU FAU SHAN, YUEN LONG, N.T.

規劃署
PLANNING
DEPARTMENT



參考編號
REFERENCE No.
A/YL-LFS/371

圖 PLAN
A-4

本圖於2020年9月30日擬備，所根據的資料為攝於2020年9月4日的實地照片
PLAN PREPARED ON 30.9.2020
BASED ON SITE PHOTOS
TAKEN ON 4.9.2020