

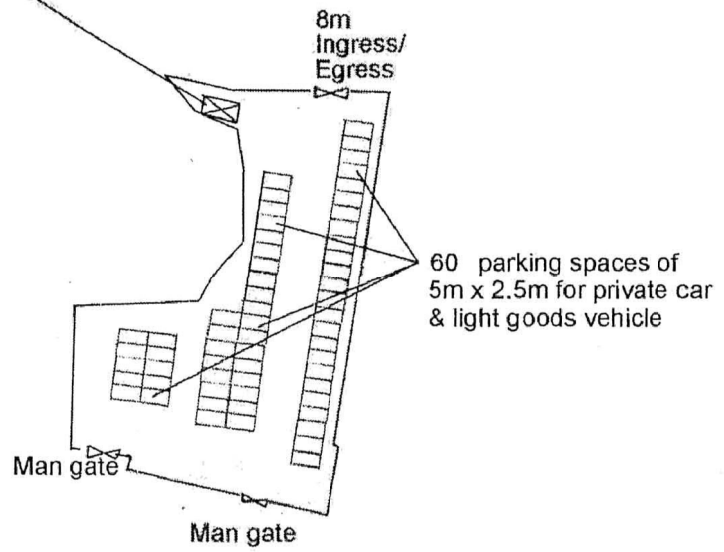
<p>Project 項目名稱: Proposed Temporary Public Vehicle Park for Private Car & Light Goods Vehicle for a Period of 3 Years at Lots 384 (Part), 387 S.C ss.1 RP (Part), 387 S.C ss.2 RP (Part), 387 S.C ss.3 RP (Part), 388 (Part), 390 (Part) in D.D. 122 & Adjoining Government Land, Ping Shan, Yuen Long, N.T.</p>	<p>Drawing Title 圖目: Location Plan</p> <p>Drawing No. 圖號: Figure 2</p>	<p>Remarks 備註: ●●● Vehicular access leading from Ping Ha Road</p> <p>Scale 比例: 1:7500</p>
---	--	---

(摘錄自申請人於 2. 12. 2020 提交的申請書)
 (Extract from Applicant's Submission of 2.12.2020)

參考編號 REFERENCE No. A/YL-PS/625	繪圖 DRAWING A-1
--------------------------------------	-------------------



Structure 1
 Guard room
 GFA: Not exceeding 20m²
 Height: Not exceeding 3.5m
 No. of storey: 1



Project 項目名稱: Proposed Temporary Public Vehicle Park for Private Car & Light Goods Vehicle for a Period of 3 Years at Lots 384 (Part), 387 S.C ss.1 RP (Part), 387 S.C ss.2 RP (Part), 387 S.C ss.3 RP (Part), 388 (Part), 390 (Part) in D.D. 122 & Adjoining Government Land, Ping Shan, Yuen Long, N.T.	Drawing Title 圖目: Proposed Layout Plan	Remarks 備註:
	Drawing No. 圖號: Figure 3	Scale 比例: 1:1000

(摘錄自申請人於 2. 12. 2020 提交的申請書)
 (Extract from Applicant's Submission of 2.12.2020)

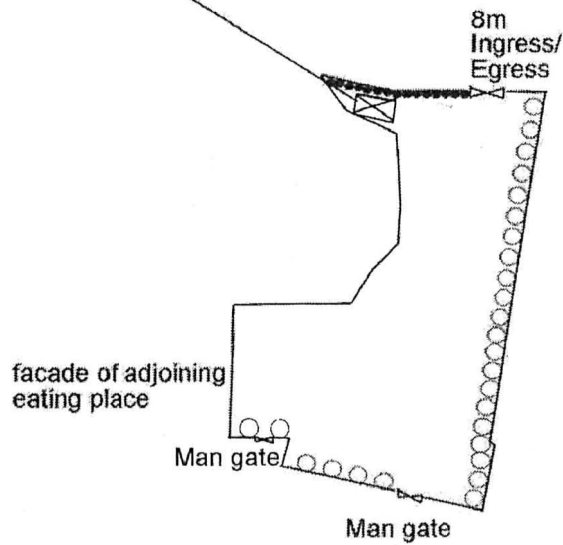
參考編號
 REFERENCE No.
 A/YL-PS/625

繪圖 DRAWING
 A-2

N



Structure 1
 Guard room
 GFA: Not exceeding 20m²
 Height: Not exceeding 3.5m
 No. of storey: 1

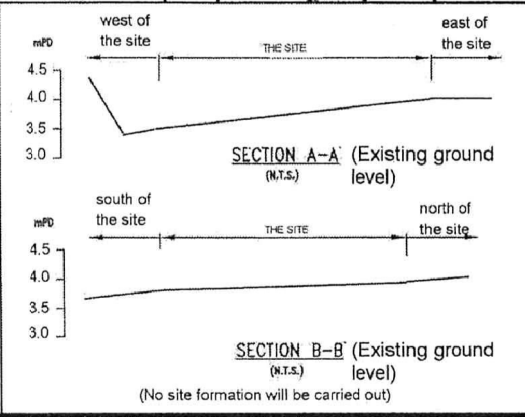
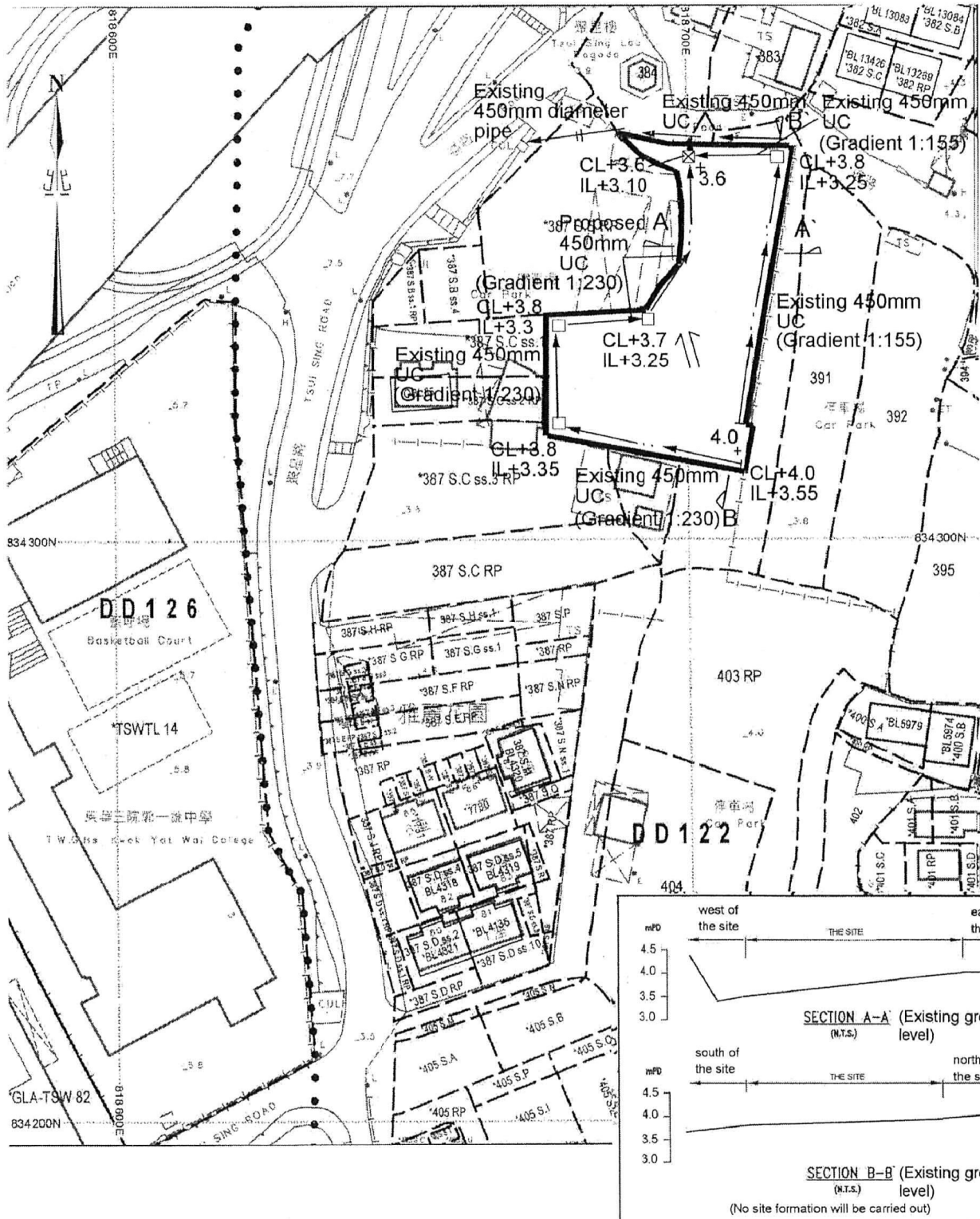


Existing tree to be preserved	Approximate Height	Spacing
○ <i>Ficus microcarpa</i> (Chinese Banyan)	3m to 6m	3m
● <i>Podocarpus macrophyllus</i> (Buddhist Pine)	2m	1m

Project 項目名稱: Proposed Temporary Public Vehicle Park for Private Car & Light Goods Vehicle for a Period of 3 Years at Lots 384 (Part), 387 S.C ss.1 RP (Part), 387 S.C ss.2 RP (Part), 387 S.C ss.3 RP (Part), 388 (Part), 390 (Part) in D.D. 122 & Adjoining Government Land, Ping Shan, Yuen Long, N.T.	Drawing Title 圖目: Proposed Landscape & Tree Preservation Plan	Remarks 備註: Scale 比例: 1:1000
	Drawing No. 圖號: Figure 4	

(摘錄自申請人於 2. 12. 2020 提交的申請書)
 (Extract from Applicant's Submission of 2.12.2020)

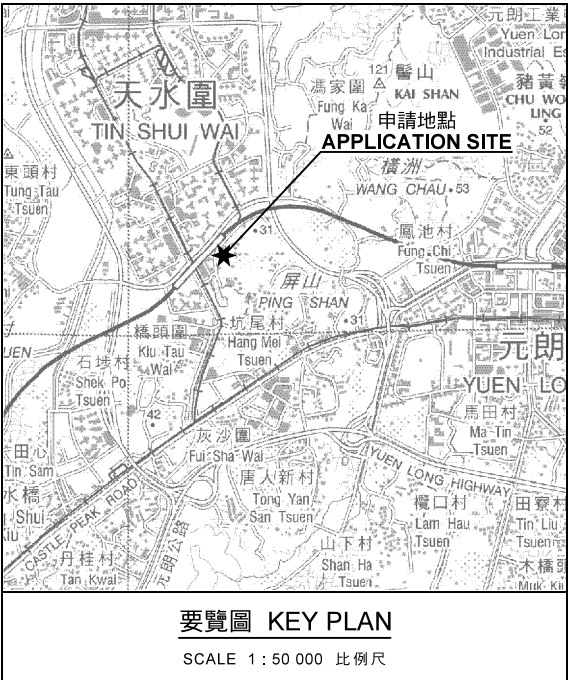
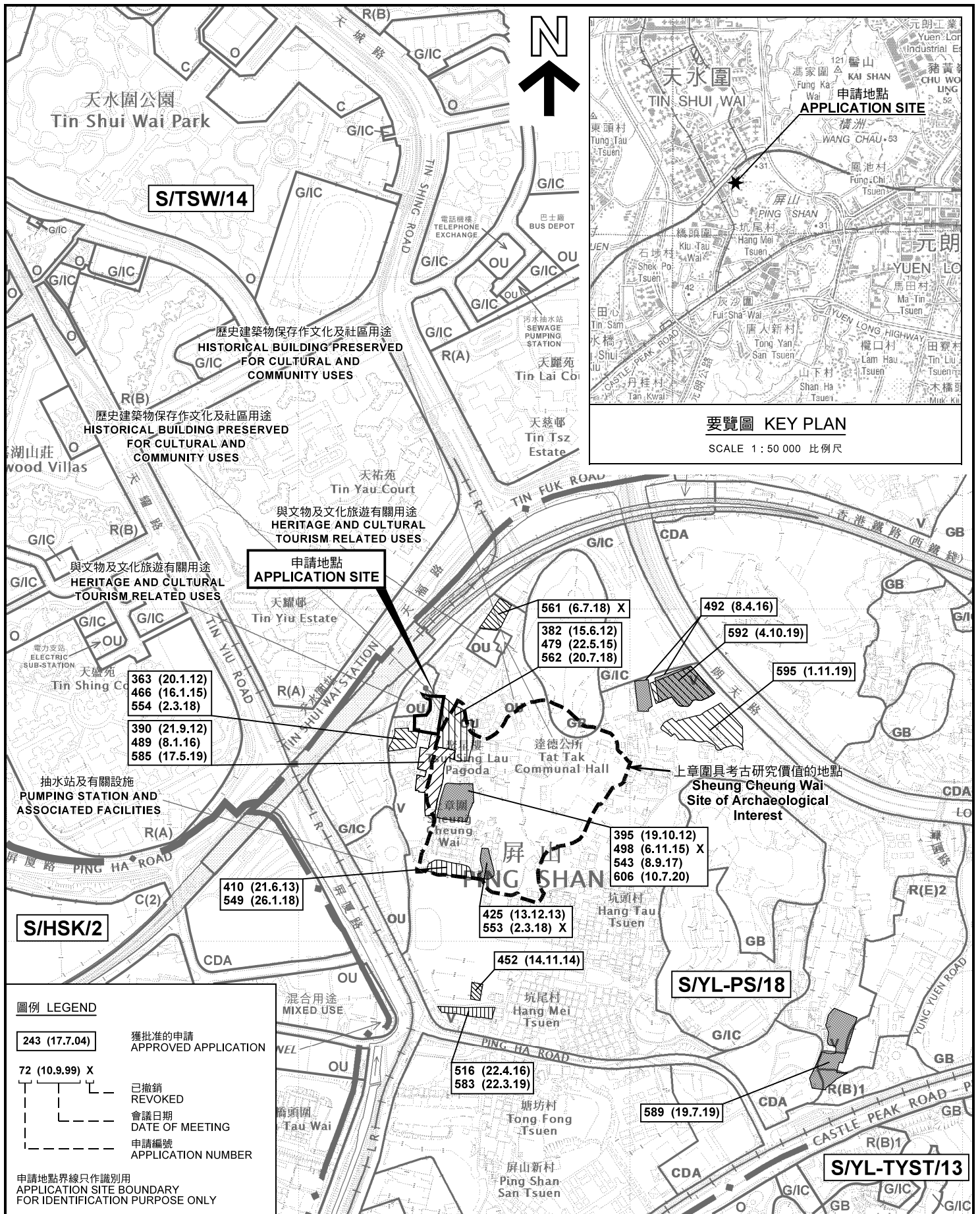
參考編號 REFERENCE No. A/YL-PS/625	繪圖 DRAWING A-3
--------------------------------------	-------------------



<p>Project 項目名稱: Proposed Temporary Public Vehicle Park for Private Car & Light Goods Vehicle for a Period of 3 Years at Lots 384 (Part), 387 S.C ss.1 RP (Part), 387 S.C ss.2 RP (Part), 387 S.C ss.3 RP (Part), 388 (Part), 390 (Part) in D.D. 122 & Adjoining Government Land, Ping Shan, Yuen Long, N.T.</p>	<p>Drawing Title 圖目: Proposed Drainage Plan</p> <p>Drawing No. 圖號: Figure 5</p>	<p>Remarks 備註:</p> <ul style="list-style-type: none"> <input type="checkbox"/> Proposed catchpit <input checked="" type="checkbox"/> Proposed catchpit with sand trap \leftarrow Flow of surface runoff <p>Scale 比例: 1:1000</p>
---	---	---

(摘錄自申請人於 2.12.2020 呈交的申請書)
 (Extract from Applicant's Submission of 2.12.2020)

參考編號 REFERENCE No. A/YL-PS/625	繪圖 DRAWING A-4
--------------------------------------	-------------------



圖例 LEGEND

243 (17.7.04)	獲批准的申請 APPROVED APPLICATION
72 (10.9.99) X	已撤銷 REVOKED
- - - - -	會議日期 DATE OF MEETING
- - - - -	申請編號 APPLICATION NUMBER

申請地點界線只作識別用
APPLICATION SITE BOUNDARY
FOR IDENTIFICATION PURPOSE ONLY


位置圖及同類申請 LOCATION PLAN WITH SIMILAR APPLICATIONS

擬議臨時公眾停車場(私家車及輕型貨車)(為期3年)
新界元朗屏山丈量約份第122約地段第384號(部分)、
第387號C分段第1小分段餘段(部分)、第387號C分段第2小分段餘段(部分)、
第387號C分段第3小分段餘段(部分)、第388號(部分)及第390號(部分)和毗連政府土地
PROPOSED TEMPORARY PUBLIC VEHICLE PARK FOR
PRIVATE CAR & LIGHT GOODS VEHICLE FOR A PERIOD OF 3 YEARS
LOTS 384 (PART), 387 S.C ss.1 RP (PART), 387 S.C ss.2 RP (PART),
387 S.C ss.3 RP (PART), 388 (PART) AND 390 (PART) IN D.D.122
AND ADJOINING GOVERNMENT LAND, PING SHAN, YUEN LONG, NEW TERRITORIES

SCALE 1 : 7 500 比例尺

米 100 0 100 200 300 米
METRES

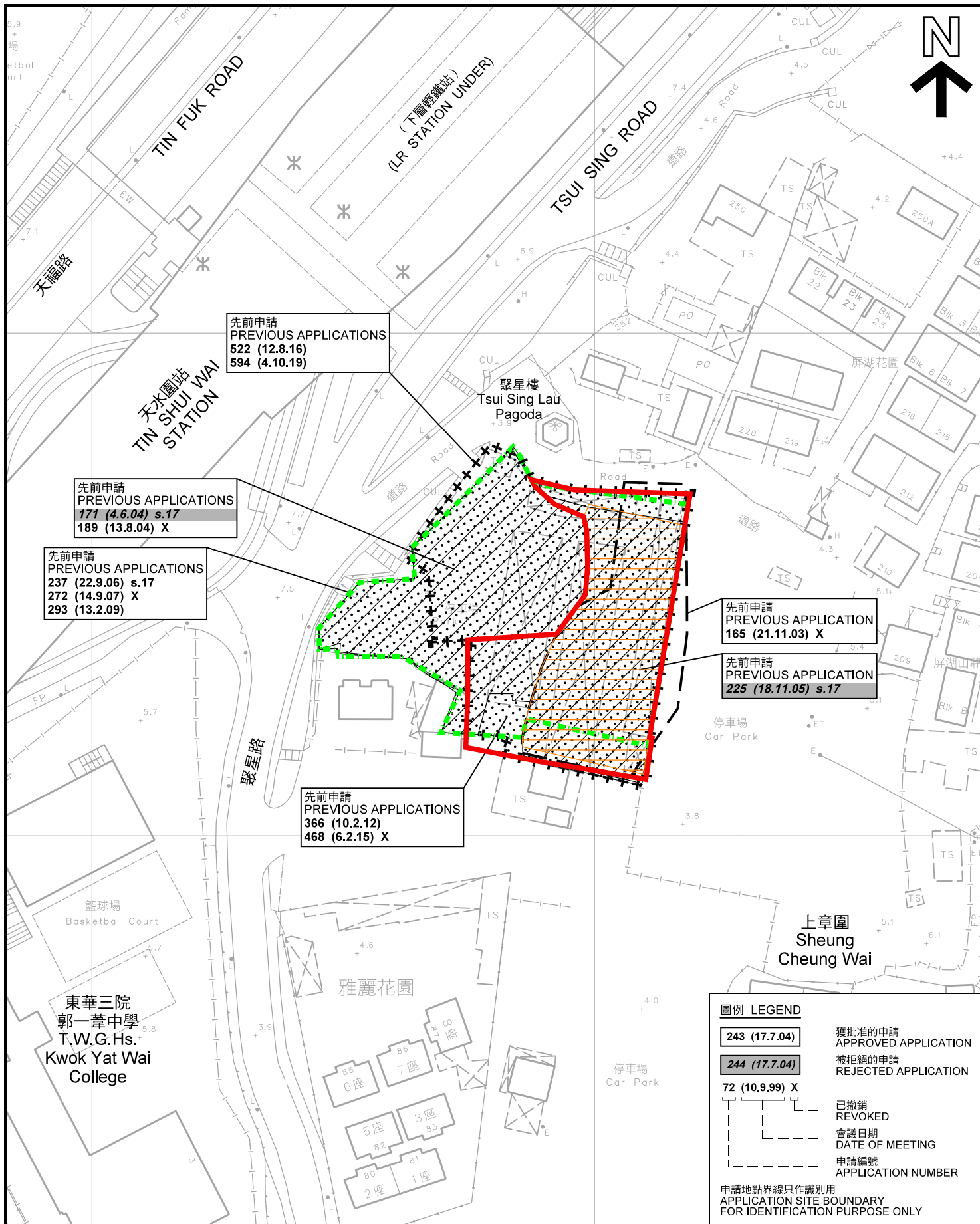
**規劃署
PLANNING
DEPARTMENT**



參考編號
REFERENCE No.
A/YL-PS/625

**圖 PLAN
A-1a**

本摘要圖於2021年1月14日擬備，
所根據的資料為於2018年10月16日
核准的分區計劃大綱圖編號 S/YL-PS/18
EXTRACT PLAN PREPARED ON 14.1.2021
BASED ON OUTLINE ZONING PLAN No.
S/YL-PS/18 APPROVED ON 16.10.2018



先前申請
PREVIOUS APPLICATIONS
522 (12.8.16)
594 (4.10.19)

先前申請
PREVIOUS APPLICATIONS
171 (4.6.04) s.17
189 (13.8.04) X

先前申請
PREVIOUS APPLICATIONS
237 (22.9.06) s.17
272 (14.9.07) X
293 (13.2.09)

先前申請
PREVIOUS APPLICATIONS
366 (10.2.12)
468 (6.2.15) X

先前申請
PREVIOUS APPLICATION
165 (21.11.03) X

先前申請
PREVIOUS APPLICATION
225 (18.11.05) s.17

圖例 LEGEND	
243 (17.7.04)	獲批准的申請 APPROVED APPLICATION
244 (17.7.04)	被拒絕的申請 REJECTED APPLICATION
72 (10.9.99) X	已撤銷 REVOKED
---	會議日期 DATE OF MEETING
---	申請編號 APPLICATION NUMBER

申請地點界線只作識別用
APPLICATION SITE BOUNDARY
FOR IDENTIFICATION PURPOSE ONLY

先前申請圖 PREVIOUS APPLICATIONS PLAN

擬議臨時公眾停車場(私家車及輕型貨車)(為期3年)
新界元朗屏山丈量約份第122約地段第384號(部分)、
第387號C分段第1小分段餘段(部分)、第387號C分段第2小分段餘段(部分)、
第387號C分段第3小分段餘段(部分)、第388號(部分)及第390號(部分)和毗連政府土地
PROPOSED TEMPORARY PUBLIC VEHICLE PARK FOR
PRIVATE CAR & LIGHT GOODS VEHICLE FOR A PERIOD OF 3 YEARS
LOTS 384 (PART), 387 S.C ss.1 RP (PART), 387 S.C ss.2 RP (PART),
387 S.C ss.3 RP (PART), 388 (PART) AND 390 (PART) IN D.D.122
AND ADJOINING GOVERNMENT LAND, PING SHAN, YUEN LONG, NEW TERRITORIES

SCALE 1 : 1 000 比例尺

米 20 0 20 40 米
METRES

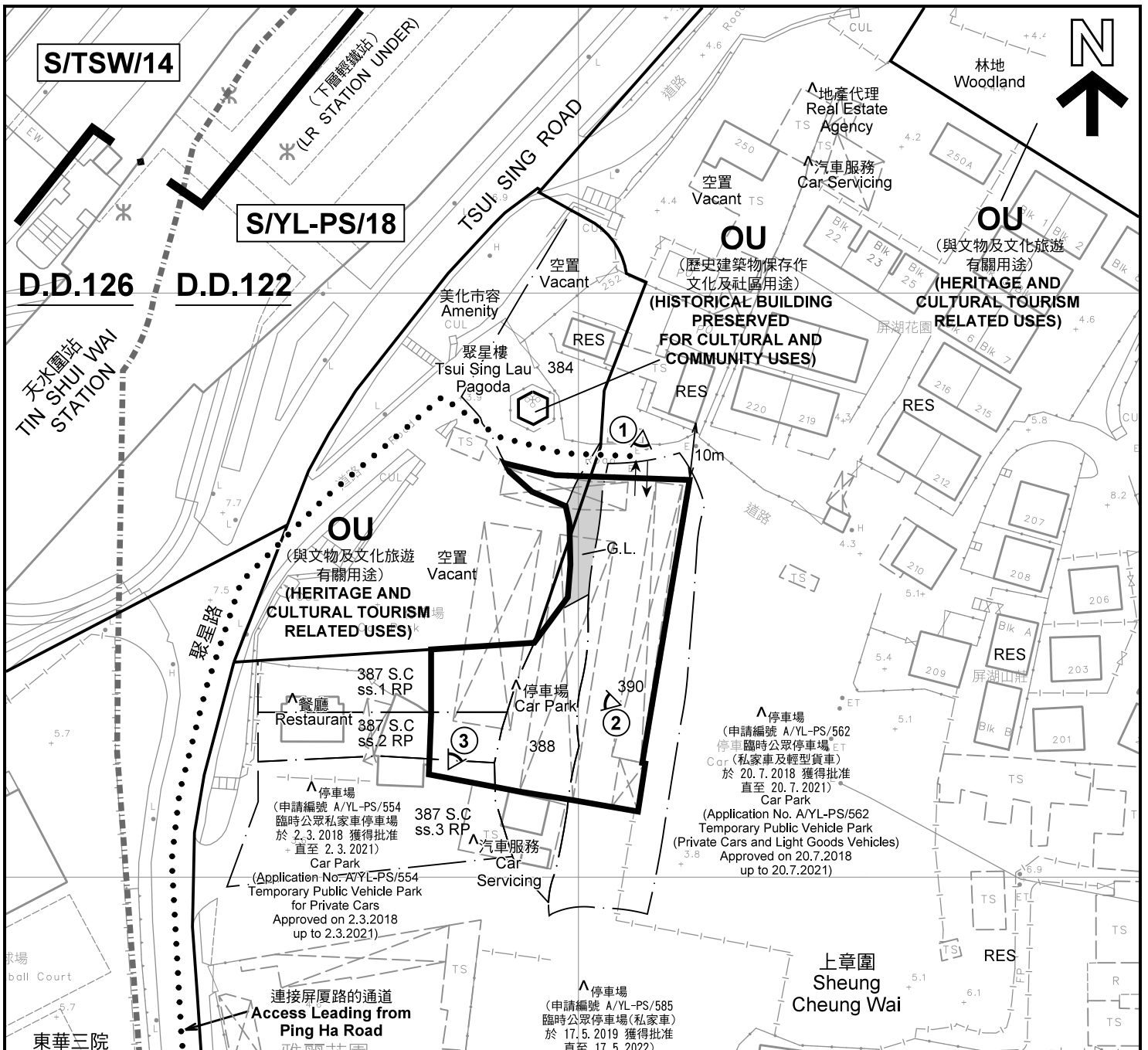
本摘要圖於2020年12月28日擬備，所根據的資料為測量圖編號 6-NW-8A 及 6-NW-8B
EXTRACT PLAN PREPARED ON 28.12.2020
BASED ON SURVEY SHEETS No. 6-NW-8A & 6-NW-8B

規劃署
PLANNING
DEPARTMENT



參考編號
REFERENCE No.
A/YL-PS/625

圖 PLAN
A-1b



註釋 Notes:

(1) 2021年1月6日勘測的土地用途
Land uses shown on this plan are in accordance with the land use survey conducted by the Planning Department on 6.1.2021

(2) * 土地用途跟1993年7月勘測的土地用途一致
Indicates that the use is the same as that revealed by the land use survey conducted by the Planning Department in Jul 1993

(3) ^ 土地用途跟1993年7月勘測的土地用途有別
Indicates that the use is different from that revealed by the land use survey conducted by the Planning Department in Jul 1993

圖例 LEGEND	
	申請地點(界線只作識別用) APPLICATION SITE BOUNDARY FOR IDENTIFICATION PURPOSE ONLY)
	鄉村式發展 VILLAGE TYPE DEVELOPMENT
	政府、機構或社區 GOVERNMENT, INSTITUTION OR COMMUNITY
	其他指定用途 OTHER SPECIFIED USES
	政府土地 GOVERNMENT LAND
	住用構築物 RESIDENTIAL STRUCTURES
	實地照片的觀景點 VIEWING POINT OF SITE PHOTO
	丈量約份界線 D.D. BOUNDARY
	入口/出口 INGRESS / EGRESS

本摘要圖於2021年1月14日擬備，所根據的資料為測量圖編號 6-NW-8A 及 6-NW-8B
EXTRACT PLAN PREPARED ON 14.1.2021
BASED ON SURVEY SHEETS No. 6-NW-8A & 6-NW-8B

平面圖 SITE PLAN

擬議臨時公眾停車場(私家車及輕型貨車)(為期3年)
新界元朗屏山丈量約份第122約地段第384號(部分)、
第387號C分段第1小分段餘段(部分)、第387號C分段第2小分段餘段(部分)、
第387號C分段第3小分段餘段(部分)、第388號(部分)及第390號(部分)和毗連政府土地
PROPOSED TEMPORARY PUBLIC VEHICLE PARK FOR
PRIVATE CAR & LIGHT GOODS VEHICLE FOR A PERIOD OF 3 YEARS
LOTS 384 (PART), 387 S.C ss.1 RP (PART), 387 S.C ss.2 RP (PART),
387 S.C ss.3 RP (PART), 388 (PART) AND 390 (PART) IN D.D.122
AND ADJOINING GOVERNMENT LAND, PING SHAN, YUEN LONG, NEW TERRITORIES

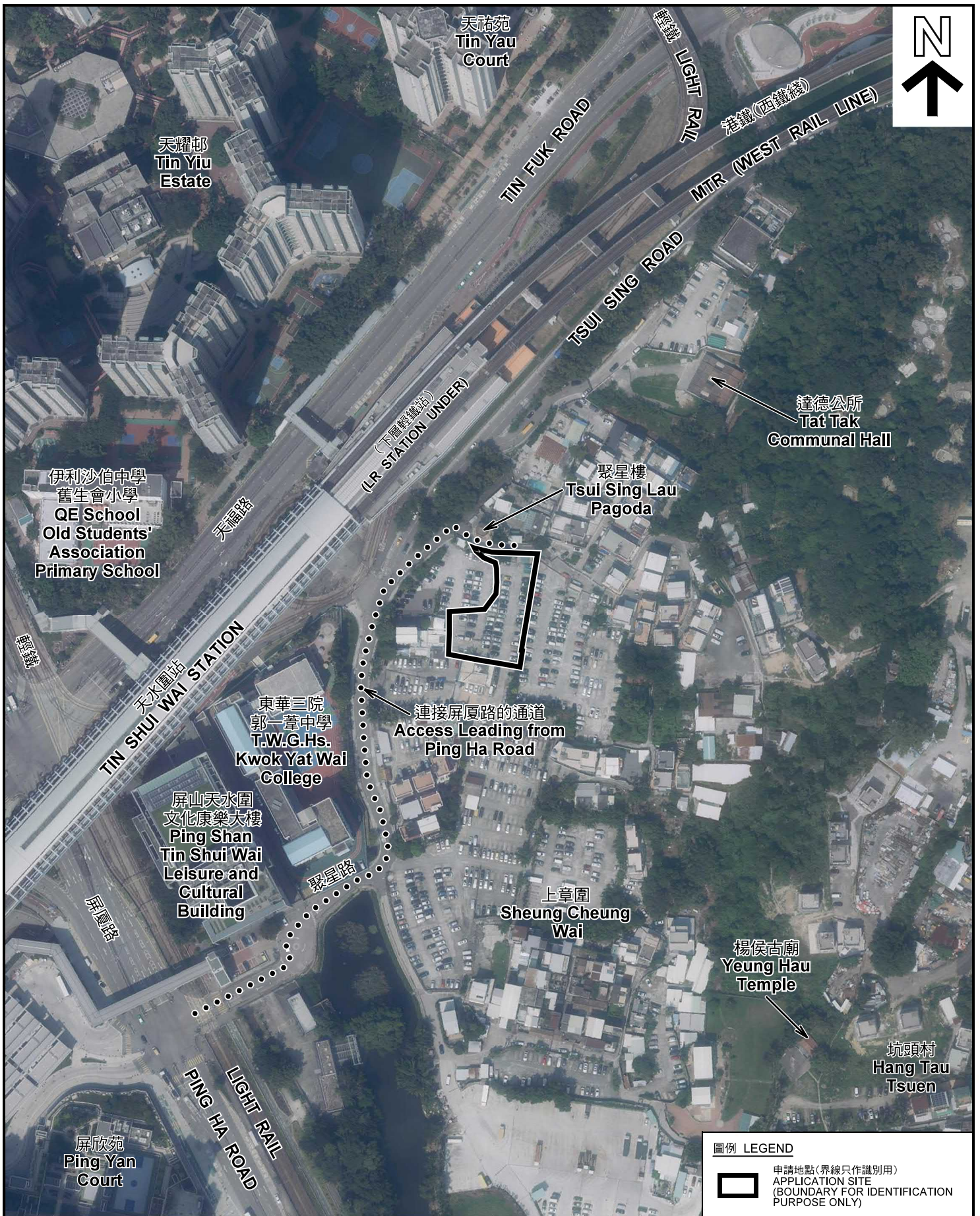
SCALE 1 : 1 000 比例尺

米 20 0 20 40 米
METRES

**規劃署
PLANNING
DEPARTMENT**

參考編號
REFERENCE No.
A/YL-PS/625

圖 PLAN
A-2



圖例 LEGEND

-  申請地點 (界線只作識別用)
APPLICATION SITE
(BOUNDARY FOR IDENTIFICATION
PURPOSE ONLY)

本摘要圖於2021年1月11日擬備，所根據的資料為地政總署於2019年10月18日拍得的航攝照片編號 E073088C
EXTRACT PLAN PREPARED ON 11.1.2021
BASED ON AERIAL PHOTO No.
E073088C TAKEN ON 18.10.2019
BY LANDS DEPARTMENT

航攝照片 AERIAL PHOTO

擬議臨時公眾停車場(私家車及輕型貨車)(為期3年)
新界元朗屏山丈量約份第122約地段第384號(部分)、
第387號C分段第1小分段餘段(部分)、第387號C分段第2小分段餘段(部分)、
第387號C分段第3小分段餘段(部分)、第388號(部分)及第390號(部分)和毗連政府土地
PROPOSED TEMPORARY PUBLIC VEHICLE PARK FOR
PRIVATE CAR & LIGHT GOODS VEHICLE FOR A PERIOD OF 3 YEARS
LOTS 384 (PART), 387 S.C ss.1 RP (PART), 387 S.C ss.2 RP (PART),
387 S.C ss.3 RP (PART), 388 (PART) AND 390 (PART) IN D.D.122
AND ADJOINING GOVERNMENT LAND, PING SHAN, YUEN LONG, NEW TERRITORIES

規劃署
PLANNING
DEPARTMENT



參考編號
REFERENCE No.
A/YL-PS/625

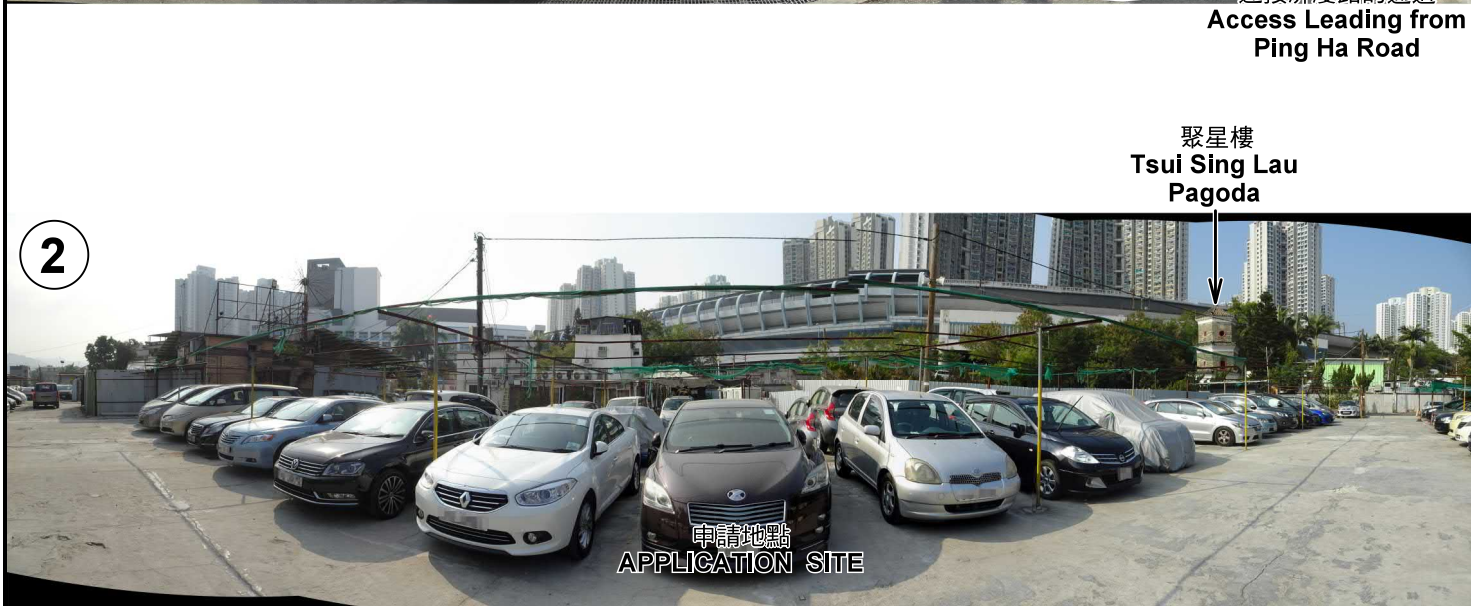
圖 PLAN
A-3



申請地點
APPLICATION SITE

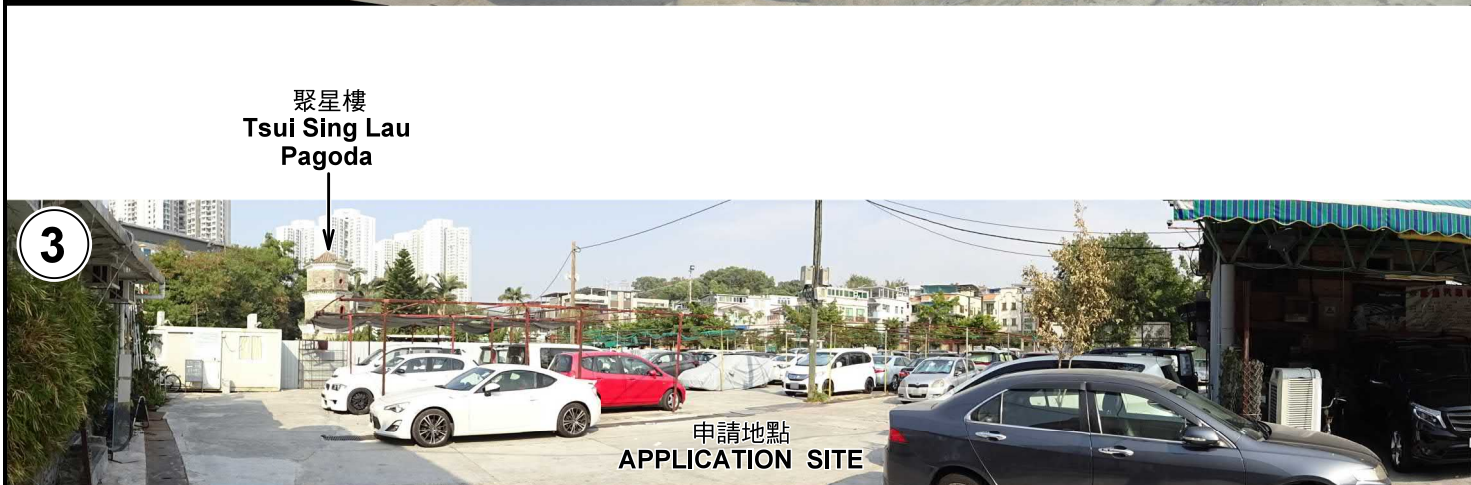
連接屏廈路的通道

Access Leading from
Ping Ha Road



聚星樓
Tsui Sing Lau
Pagoda

申請地點
APPLICATION SITE



聚星樓
Tsui Sing Lau
Pagoda

申請地點
APPLICATION SITE

實地照片 SITE PHOTOS

本圖於2021年1月12日擬備，所根據的資料為攝於2021年1月6日的實地照片
PLAN PREPARED ON 12.1.2021
BASED ON SITE PHOTOS
TAKEN ON 6.1.2021

擬議臨時公眾停車場(私家車及輕型貨車)(為期3年)
新界元朗屏山丈量約份第122約地段第384號(部分)、
第387號C分段第1小分段餘段(部分)、第387號C分段第2小分段餘段(部分)、
第387號C分段第3小分段餘段(部分)、第388號(部分)及第390號(部分)和毗連政府土地
PROPOSED TEMPORARY PUBLIC VEHICLE PARK FOR
PRIVATE CAR & LIGHT GOODS VEHICLE FOR A PERIOD OF 3 YEARS
LOTS 384 (PART), 387 S.C ss.1 RP (PART), 387 S.C ss.2 RP (PART),
387 S.C ss.3 RP (PART), 388 (PART) AND 390 (PART) IN D.D.122
AND ADJOINING GOVERNMENT LAND, PING SHAN, YUEN LONG, NEW TERRITORIES

規劃署
PLANNING
DEPARTMENT



參考編號
REFERENCE No.
A/YL-PS/625

圖 PLAN
A-4