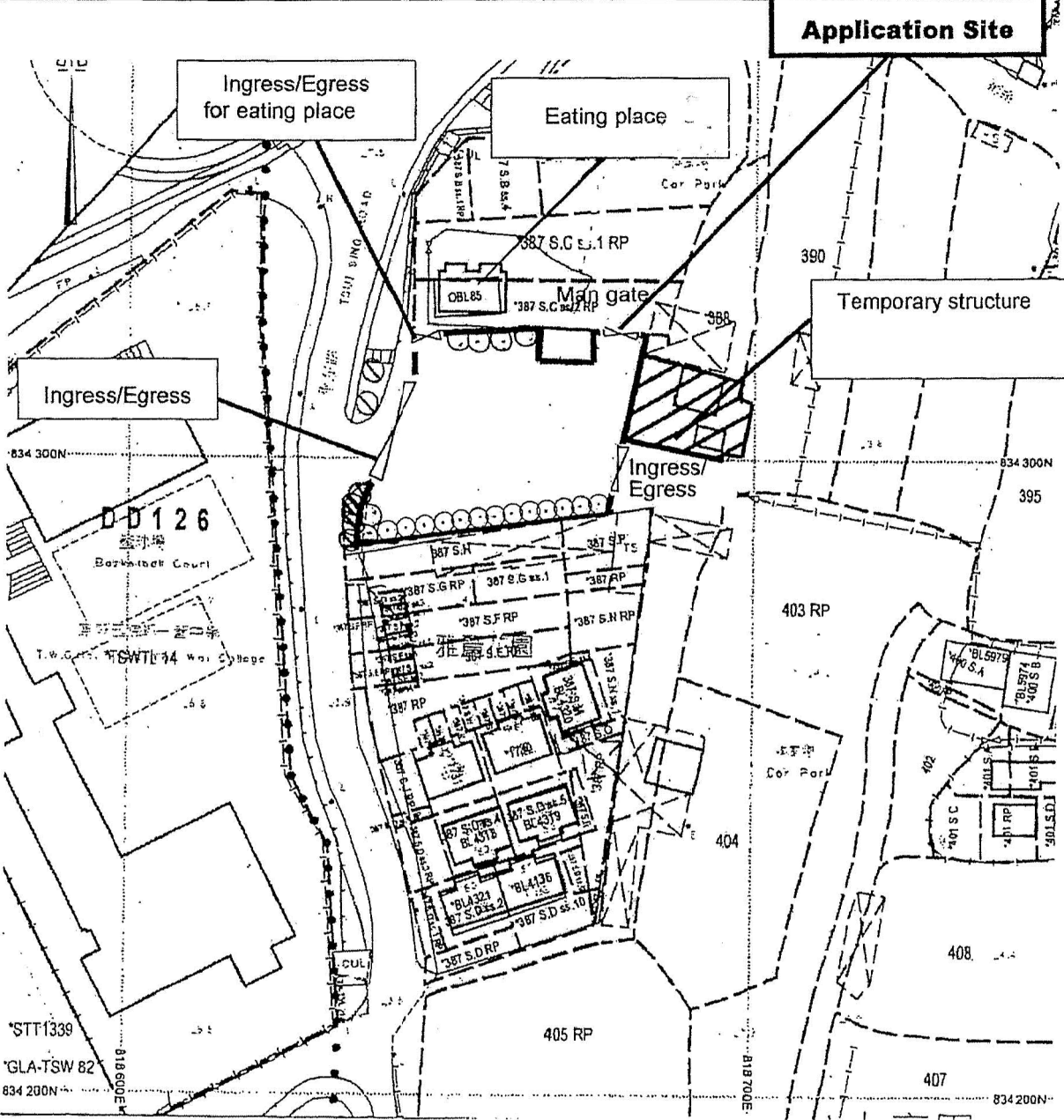


<p>Project 項目名稱: Proposed Temporary Public Vehicle Park for Private Car for a Period of 3 Years at Lots 387 S.C ss.3 RP (Part), 387 S.C ss.4, 387 S.C ss.5, 387 S.C ss.6 (Part), 387 S.C ss.7 (Part) & 387 S.C RP in D.D. 122, Sheung Cheung Wai, Ping Shan, Yuen Long, N.T.</p>	<p>Drawing Title 圖目: Proposed Layout Plan</p> <p>Drawing No. 圖號: Figure 3</p>	<p>Remarks 備註:</p> <p>Scale 比例: 4:1000</p>
---	---	---

(摘錄自申請人於 8.1.2021 呈交的申請書)
 (Extract from Applicant's Submission of 8.1.2021)

<p>參考編號 REFERENCE No. A/YL-PS/628</p>	<p>繪圖 DRAWING A-1</p>
---	------------------------------------

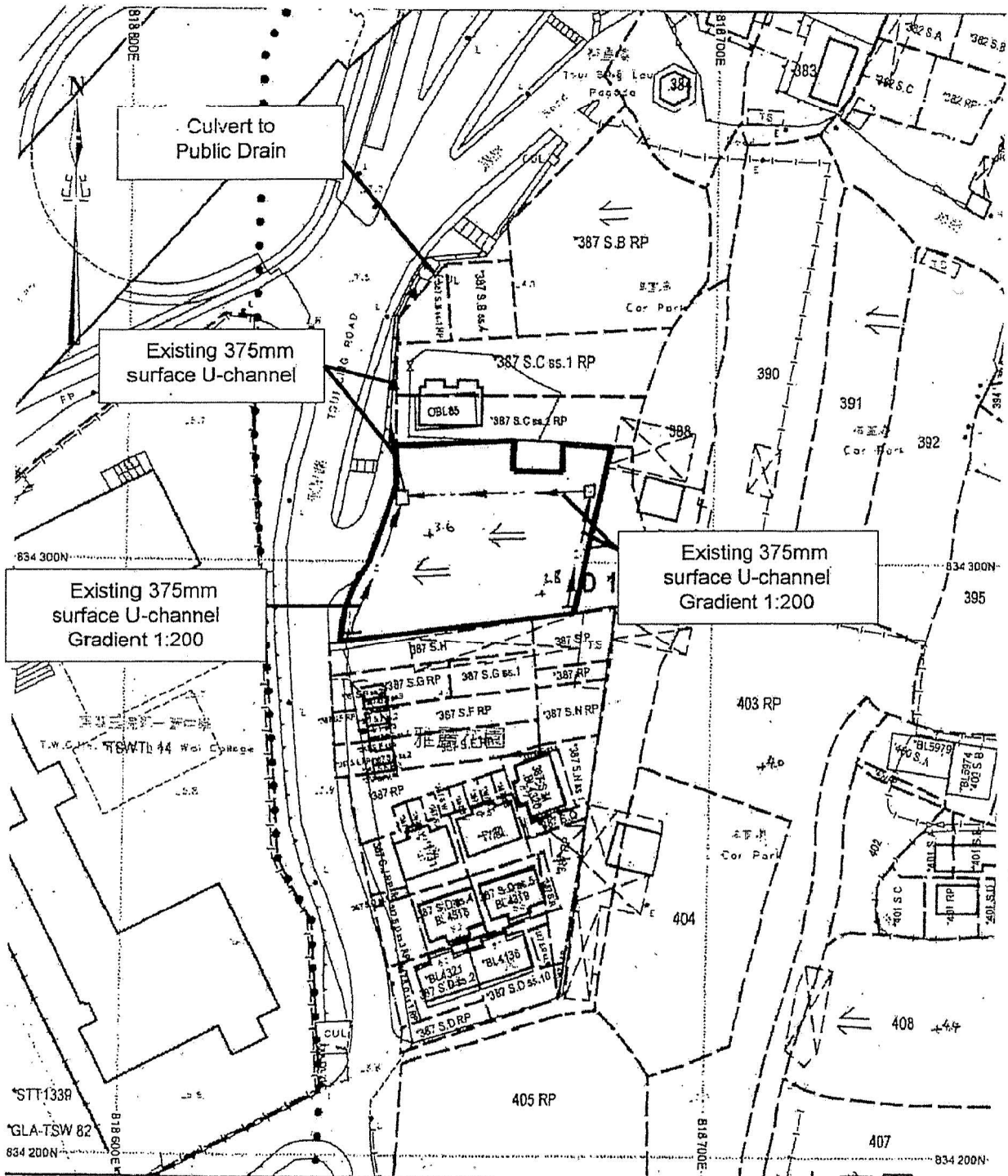
Tree	Approximate Height	Spacing
Existing <i>Ficus microcarpa</i> to be preserved	3.5m	3m
Royal Palm (outside application site)	5m to 6m	2m



<p>Project 項目名稱: Proposed Temporary Public Vehicle Park for Private Car for a Period of 3 Years at Lots 387 S.C ss.3 RP (Part), 387 S.C ss.4, 387 S.C ss.5, 387 S.C ss.6 (Part), 387 S.C ss.7 (Part) & 387 S.C RP in D.D. 122, Sheung Cheung Wai, Ping Shan, Yuen Long, N.T.</p>	<p>Drawing Title 圖目: Proposed Tree Preservation Plan</p> <p>Drawing No. 圖號: Figure 4</p>	<p>Remarks 備註:</p> <p>Scale 比例: 1:1000</p>
--	--	--

(摘錄自申請人於 8.1.2021 呈交的申請書)
(Extract from Applicant's Submission of 8.1.2021)

<p>參考編號 REFERENCE No. AYL-PS/628</p>	<p>繪圖 DRAWING A-2</p>
--	---------------------------



Project 項目名稱:

Proposed Temporary Public Vehicle Park for Private Car for a Period of 3 Years at Lots 387 S.C ss.3 RP (Part), 387 S.C ss.4, 387 S.C ss.5, 387 S.C ss.6 (Part), 387 S.C ss.7 (Part) & 387 S.C RP in D.D. 122, Sheung Cheung Wai, Ping Shan, Yuen Long, N.T.

Drawing Title 圖名:

As-built Drainage Plan

Drawing No. 圖號:

Figure 5

Remarks 備註:

- Existing catchpit
- Flow of surface runoff
- Level (in mPD)

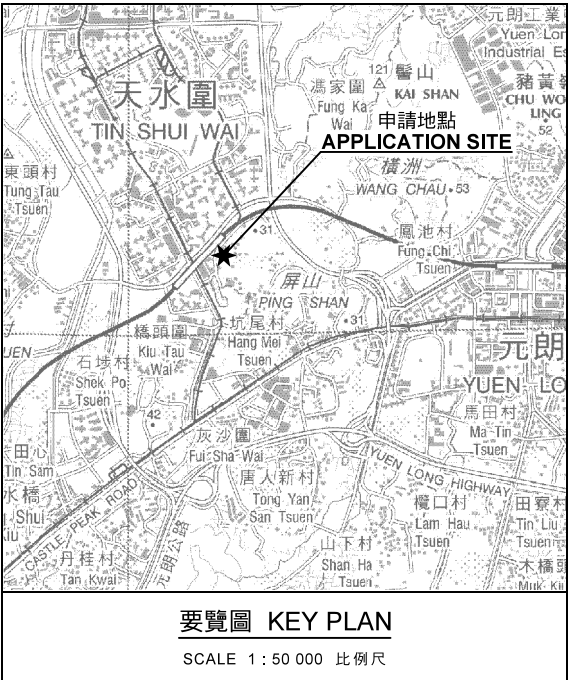
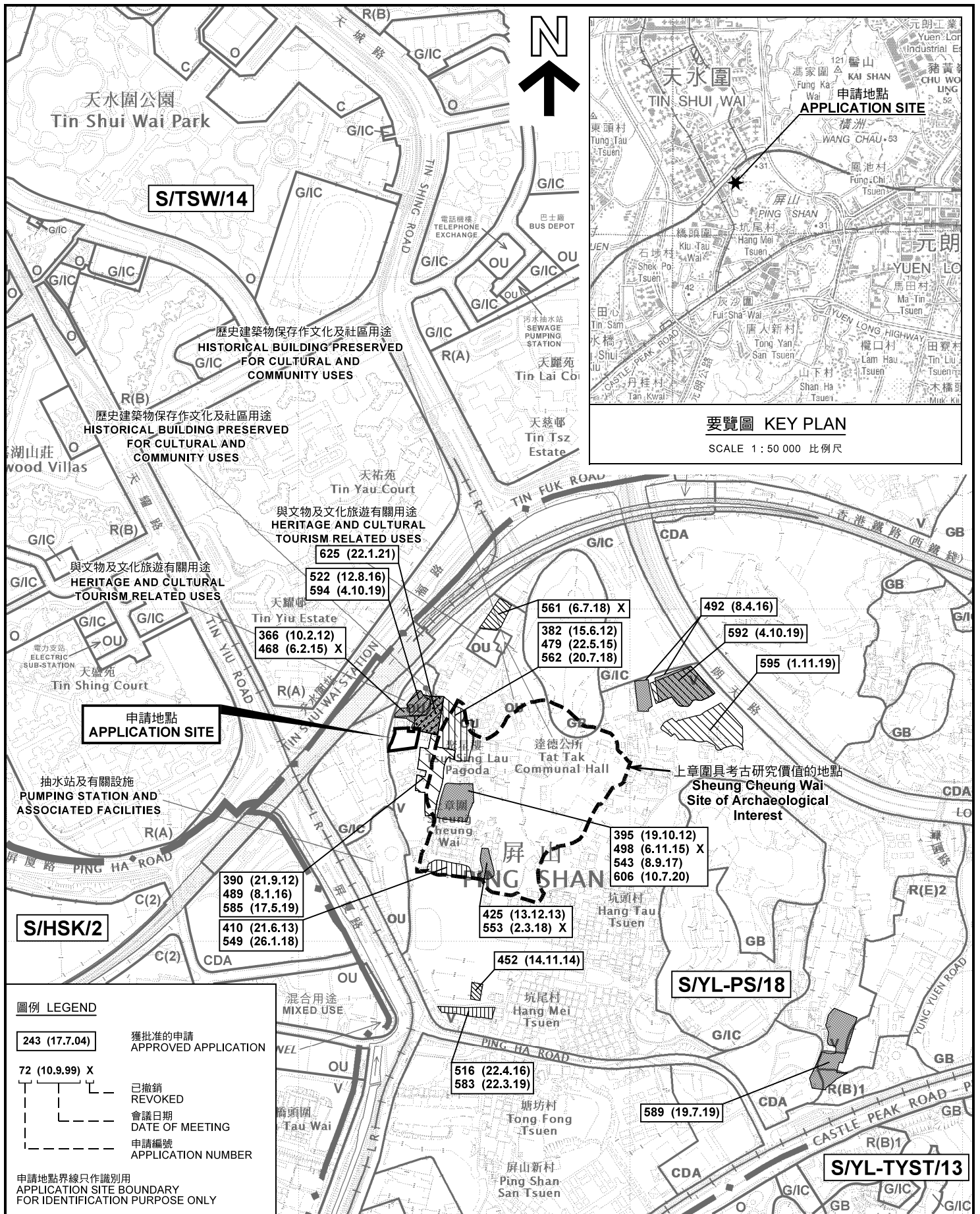
Scale 比例:

1:1000

(摘錄自申請人於 8.1.2021 呈交的申請書)
(Extract from Applicant's
Submission of 8.1.2021)

參考編號
REFERENCE No.
AYL-PS/628

繪圖 DRAWING
A-3



申請地點
APPLICATION SITE

抽水站及有關設施
PUMPING STATION AND ASSOCIATED FACILITIES

上章圍具考古研究價值的地點
Sheung Cheung Wai Site of Archaeological Interest

圖例 LEGEND

243 (17.7.04)	獲批准的申請 APPROVED APPLICATION
72 (10.9.99) X	已撤銷 REVOKED
---	會議日期 DATE OF MEETING
---	申請編號 APPLICATION NUMBER

申請地點界線只作識別用
APPLICATION SITE BOUNDARY FOR IDENTIFICATION PURPOSE ONLY

位置圖及同類申請 LOCATION PLAN WITH SIMILAR APPLICATIONS

臨時的公眾停車場(私家車)規劃許可(為期3年)
新界元朗屏山丈量約份第122約地段第387號C分段第3小分段餘段(部分)、
第387號C分段第4小分段、第387號C分段第5小分段、第387號C分段第6小分段(部分)、
第387號C分段第7小分段(部分)及第387號C分段餘段(部分)
RENEWAL OF PLANNING APPROVAL FOR TEMPORARY PUBLIC VEHICLE PARK
FOR PRIVATE CAR FOR A PERIOD OF 3 YEARS
LOTS 387 S.C ss.3 RP (PART), 387 S.C ss.4, 387 S.C ss.5,
387 S.C ss.6 (PART), 387 S.C ss.7 (PART) & 387 S.C RP IN D.D.122,
SHEUNG CHEUNG WAI, PING SHAN, YUEN LONG, NEW TERRITORIES
SCALE 1:7 500 比例尺

米 100 0 100 200 300 METRES

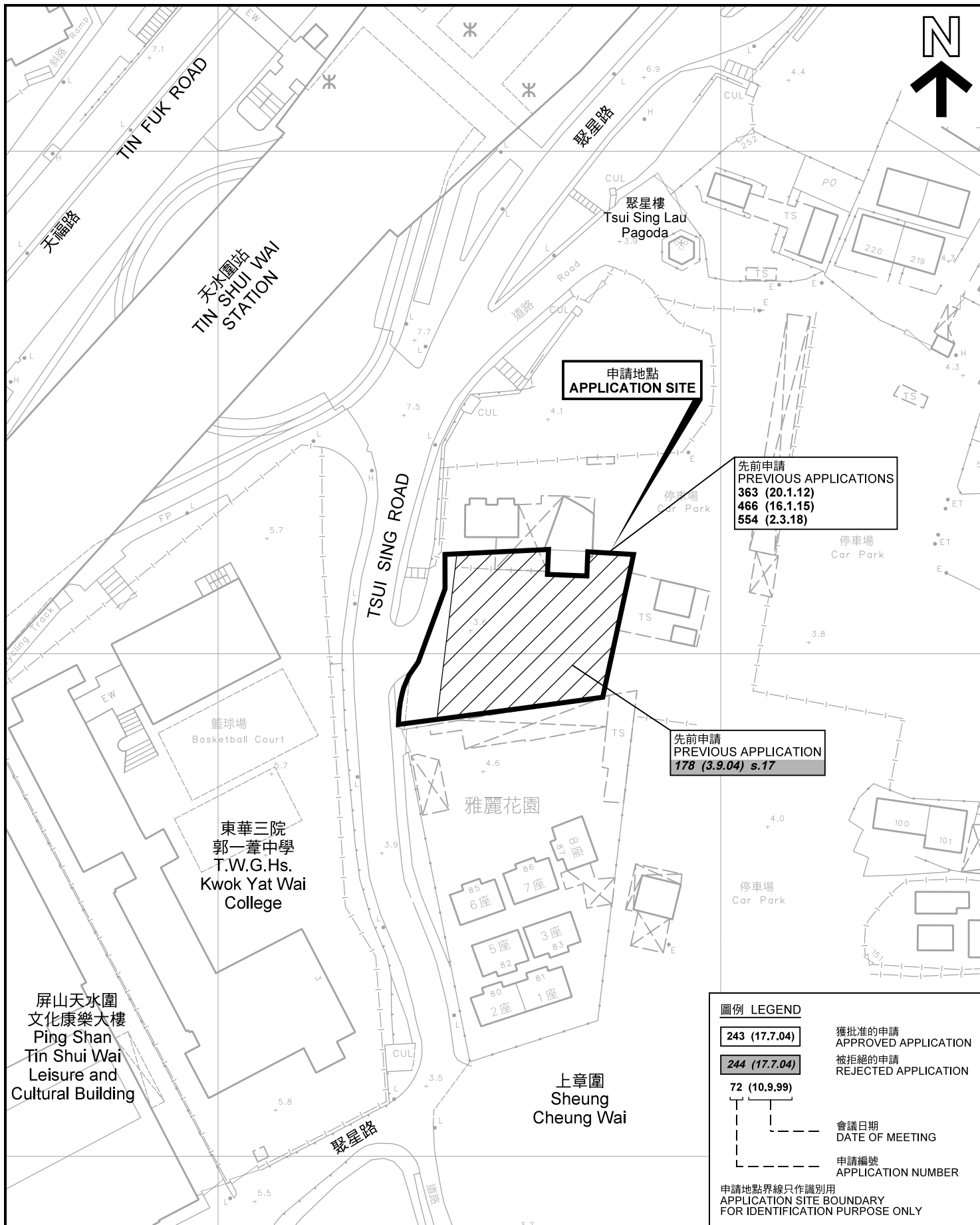
規劃署
PLANNING DEPARTMENT



參考編號
REFERENCE No.
A/YL-PS/628

圖 PLAN
A-1a

本摘要圖於2021年2月22日擬備，
所根據的資料為於2018年10月16日
核准的分區計劃大綱圖編號 S/YL-PS/18
EXTRACT PLAN PREPARED ON 22.2.2021
BASED ON OUTLINE ZONING PLAN No.
S/YL-PS/18 APPROVED ON 16.10.2018



申請地點
APPLICATION SITE

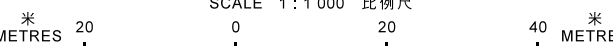
先前申請
PREVIOUS APPLICATIONS
363 (20.1.12)
466 (16.1.15)
554 (2.3.18)

先前申請
PREVIOUS APPLICATION
178 (3.9.04) s.17

圖例 LEGEND	
243 (17.7.04)	獲批准的申請 APPROVED APPLICATION
244 (17.7.04)	被拒絕的申請 REJECTED APPLICATION
72 (10.9.99)	會議日期 DATE OF MEETING
	申請編號 APPLICATION NUMBER
申請地點界線只作識別用 APPLICATION SITE BOUNDARY FOR IDENTIFICATION PURPOSE ONLY	

先前申請圖 PREVIOUS APPLICATIONS PLAN

臨時的公眾停車場(私家車)規劃許可(為期3年)
 新界元朗屏山丈量約份第122約地段第387號C分段第3小分段餘段(部分)、
 第387號C分段第4小分段、第387號C分段第5小分段、第387號C分段第6小分段(部分)、
 第387號C分段第7小分段(部分)及第387號C分段餘段(部分)
 RENEWAL OF PLANNING APPROVAL FOR TEMPORARY PUBLIC VEHICLE PARK
 FOR PRIVATE CAR FOR A PERIOD OF 3 YEARS
 LOTS 387 S.C ss.3 RP (PART), 387 S.C ss.4, 387 S.C ss.5,
 387 S.C ss.6 (PART), 387 S.C ss.7 (PART) & 387 S.C RP IN D.D.122,
 SHEUNG CHEUNG WAI, PING SHAN, YUEN LONG, NEW TERRITORIES
 SCALE 1 : 1 000 比例尺



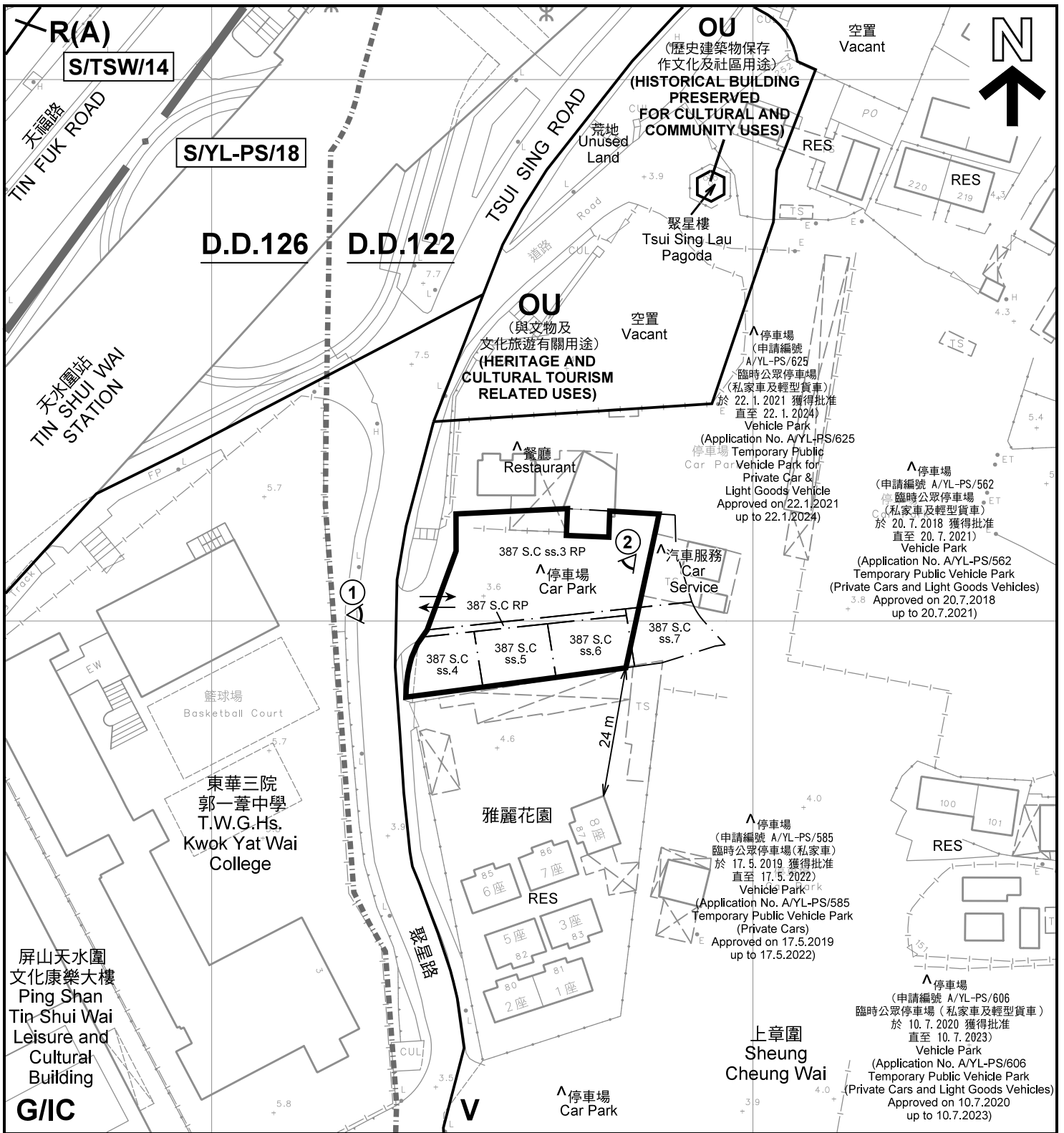
本摘要圖於2021年2月2日擬備，所根據的資料為測量圖編號 6-NW-8A、8B 及 8C
 EXTRACT PLAN PREPARED ON 2.2.2021
 BASED ON SURVEY SHEETS No.
 6-NW-8A, 8B & 8C

規劃署
PLANNING
DEPARTMENT



參考編號
REFERENCE No.
A/YL-PS/628

圖 PLAN
A-1b



註釋 Notes:

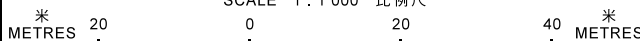
- (1) 2021年1月27日勘測的土地用途
Land uses shown on this plan are in accordance with the land use survey conducted by the Planning Department on 27.1.2021
- (2) * 土地用途跟1993年7月勘測的土地用途一致
Indicates that the use is the same as that revealed by the land use survey conducted by the Planning Department in Jul 1993
- (3) ^ 土地用途跟1993年7月勘測的土地用途有別
Indicates that the use is different from that revealed by the land use survey conducted by the Planning Department in Jul 1993

圖例 LEGEND

	申請地點(界線只作識別用) APPLICATION SITE (BOUNDARY FOR IDENTIFICATION PURPOSE ONLY)	OU	其他指定用途 OTHER SPECIFIED USES
R(A)	住宅(甲類) RESIDENTIAL (GROUP A)	RES	住用構築物 RESIDENTIAL STRUCTURES
V	鄉村式發展 VILLAGE TYPE DEVELOPMENT		實地照片的觀景點 VIEWING POINT OF SITE PHOTO
G/IC	政府、機構或社區 GOVERNMENT, INSTITUTION OR COMMUNITY		丈量約份界線 D.D. BOUNDARY
			入口/出口 INGRESS / EGRESS

平面圖 SITE PLAN

臨時的公眾停車場(私家車)規劃許可(為期3年)
 新界元朗屏山丈量約份第122約地段第387號C分段第3小分段餘段(部分)、
 第387號C分段第4小分段、第387號C分段第5小分段、第387號C分段第6小分段(部分)、
 第387號C分段第7小分段(部分)及第387號C分段餘段(部分)
 RENEWAL OF PLANNING APPROVAL FOR TEMPORARY PUBLIC VEHICLE PARK
 FOR PRIVATE CAR FOR A PERIOD OF 3 YEARS
 LOTS 387 S.C ss.3 RP (PART), 387 S.C ss.4, 387 S.C ss.5,
 387 S.C ss.6 (PART), 387 S.C ss.7 (PART) & 387 S.C RP IN D.D.122,
 SHEUNG CHEUNG WAI, PING SHAN, YUEN LONG, NEW TERRITORIES
 SCALE 1:1 000 比例尺



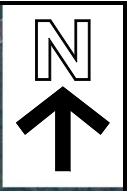
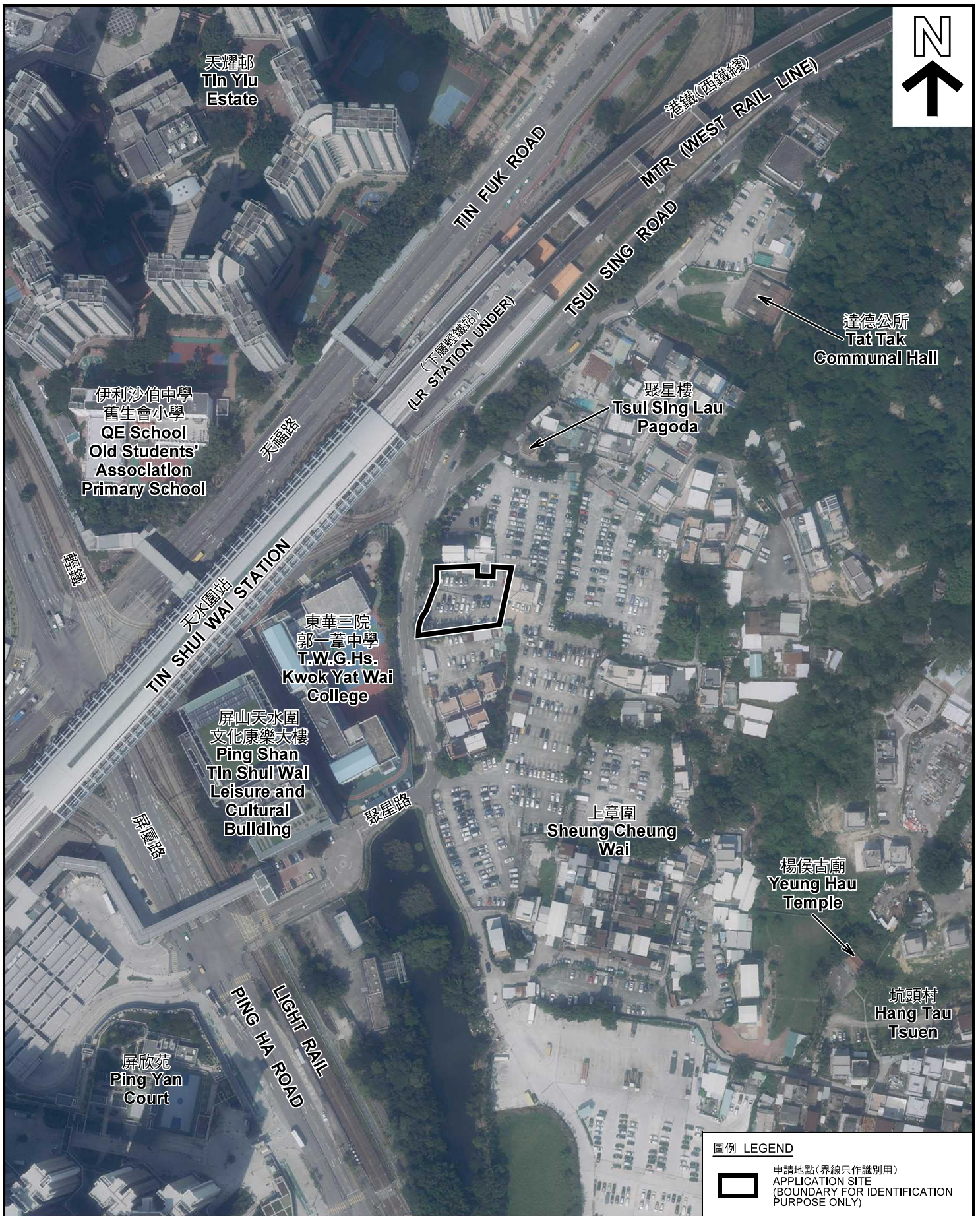
本摘要圖於2021年2月5日擬備，所根據的資料為測量圖編號 6-NW-8A 及 6-NW-8B
 EXTRACT PLAN PREPARED ON 5.2.2021
 BASED ON SURVEY SHEETS No.
 6-NW-8A & 6-NW-8B

規劃署
**PLANNING
 DEPARTMENT**



參考編號
 REFERENCE No.
A/YL-PS/628

圖 PLAN
A-2



圖例 LEGEND

 申請地點(界線只作識別用)
APPLICATION SITE
(BOUNDARY FOR IDENTIFICATION
PURPOSE ONLY)

本摘要圖於2021年1月21日擬備，所根據的資料為地政總署於2019年10月18日拍得的航攝照片編號 E073088C
EXTRACT PLAN PREPARED ON 21.1.2021
BASED ON AERIAL PHOTO No.
E073088C TAKEN ON 18.10.2019
BY LANDS DEPARTMENT

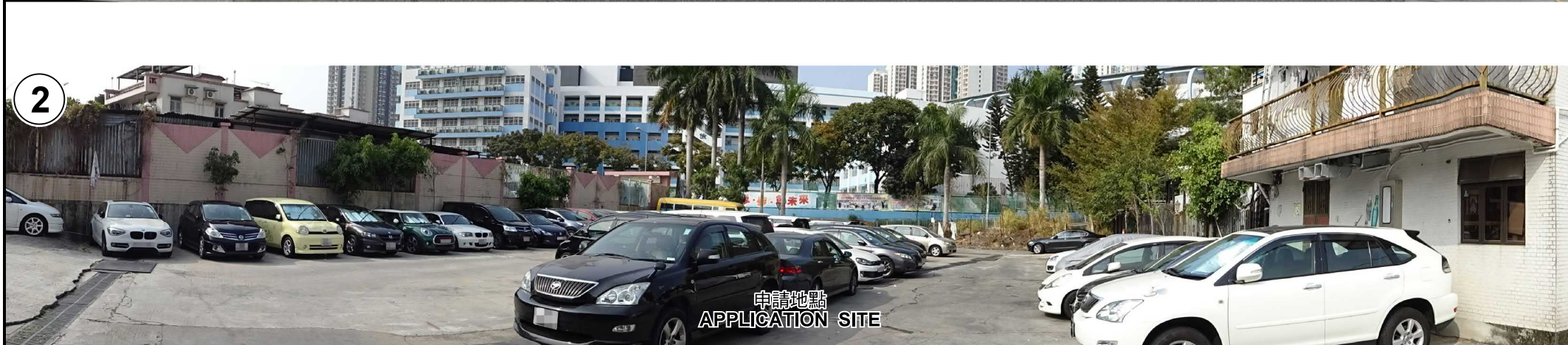
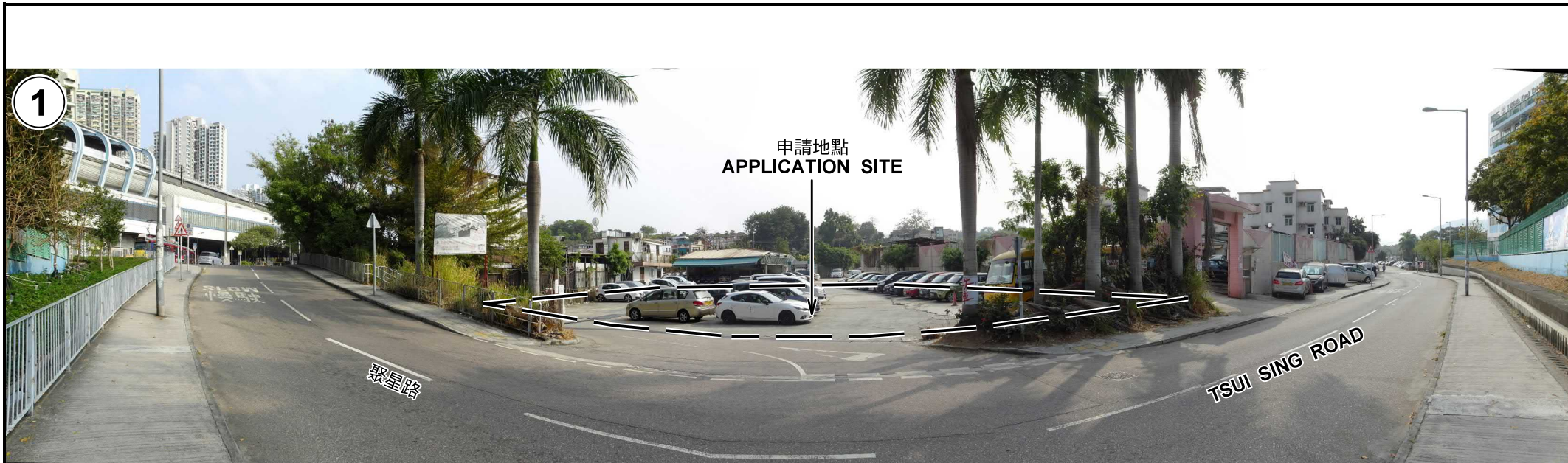
航攝照片 AERIAL PHOTO

臨時的公眾停車場(私家車)規劃許可續期(為期3年)
新界元朗屏山丈量約份第122約地段第387號C分段第3小分段餘段(部分)、
第387號C分段第4小分段、第387號C分段第5小分段、第387號C分段第6小分段(部分)、
第387號C分段第7小分段(部分)及第387號C分段餘段(部分)
RENEWAL OF PLANNING APPROVAL FOR TEMPORARY PUBLIC VEHICLE PARK
FOR PRIVATE CAR FOR A PERIOD OF 3 YEARS
LOTS 387 S.C ss.3 RP (PART), 387 S.C ss.4, 387 S.C ss.5,
387 S.C ss.6 (PART), 387 S.C ss.7 (PART) & 387 S.C RP IN D.D.122,
SHEUNG CHEUNG WAI, PING SHAN, YUEN LONG, NEW TERRITORIES

**規劃署
PLANNING
DEPARTMENT**



參考編號 REFERENCE No. A/YL-PS/628	圖 PLAN A-3
--------------------------------------	---------------



申請地點界線只作識別用 APPLICATION SITE BOUNDARY FOR IDENTIFICATION PURPOSE ONLY

本圖於2021年2月5日擬備，所根據的資料為攝於2021年1月27日的實地照片
 PLAN PREPARED ON 5.2.2021
 BASED ON SITE PHOTOS
 TAKEN ON 27.1.2021

實地照片 SITE PHOTOS

臨時的公眾停車場(私家車)規劃許可續期(為期3年)
 新界元朗屏山丈量約份第122約地段第387號C分段第3小分段餘段(部分)、
 第387號C分段第4小分段、第387號C分段第5小分段、第387號C分段第6小分段(部分)、
 第387號C分段第7小分段(部分)及第387號C分段餘段(部分)
 RENEWAL OF PLANNING APPROVAL FOR TEMPORARY PUBLIC VEHICLE PARK
 FOR PRIVATE CAR FOR A PERIOD OF 3 YEARS
 LOTS 387 S.C ss.3 RP (PART), 387 S.C ss.4, 387 S.C ss.5,
 387 S.C ss.6 (PART), 387 S.C ss.7 (PART) & 387 S.C RP IN D.D.122,
 SHEUNG CHEUNG WAI, PING SHAN, YUEN LONG, NEW TERRITORIES

規劃署
 PLANNING
 DEPARTMENT



參考編號
 REFERENCE No.
 A/YL-PS/628

圖 PLAN
 A-4