

Project 項目名稱:

Proposed Temporary Warehouse for Storage of Food & Electronic Goods for a Period of 3 Years at Lots 1343 (Part), 1344 (Part), 1345 (Part), 1349 (Part), 1351 (Part), 1353 (Part) in D.D. 119 & Adjoining Government Land, Yuen Long, N.T.

Drawing Title 圖目:

Location Plan

Remarks 備註:

●●● Vehicular Access Leading to Application Site from Kung Um Road

Drawing No. 圖號:

Figure 2

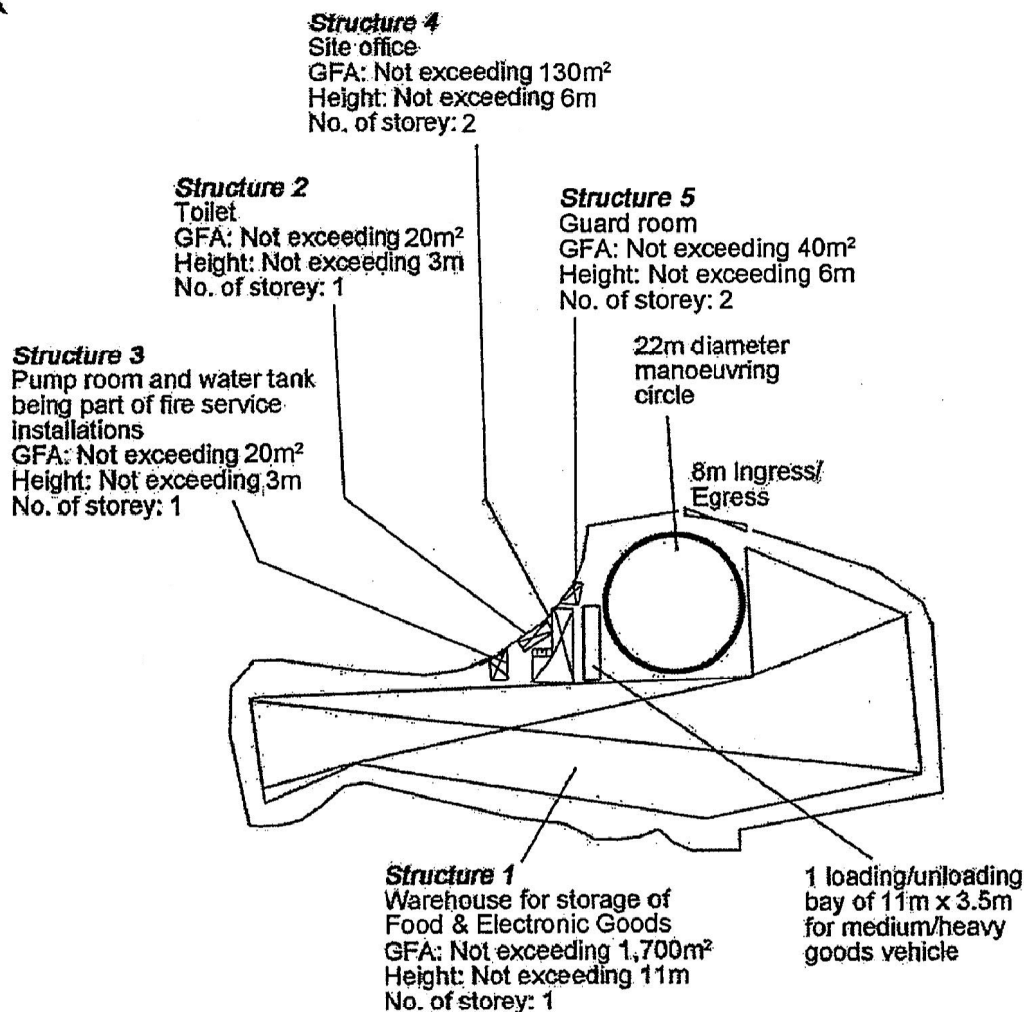
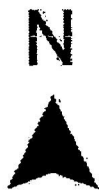
Scale 比例:

4:7500

(摘錄自申請人於 26.5.2020 呈交的申請書)
(Extract from Applicant's Submission of 26.5.2020)

參考編號
REFERENCE No.
AYL-TYST/1030

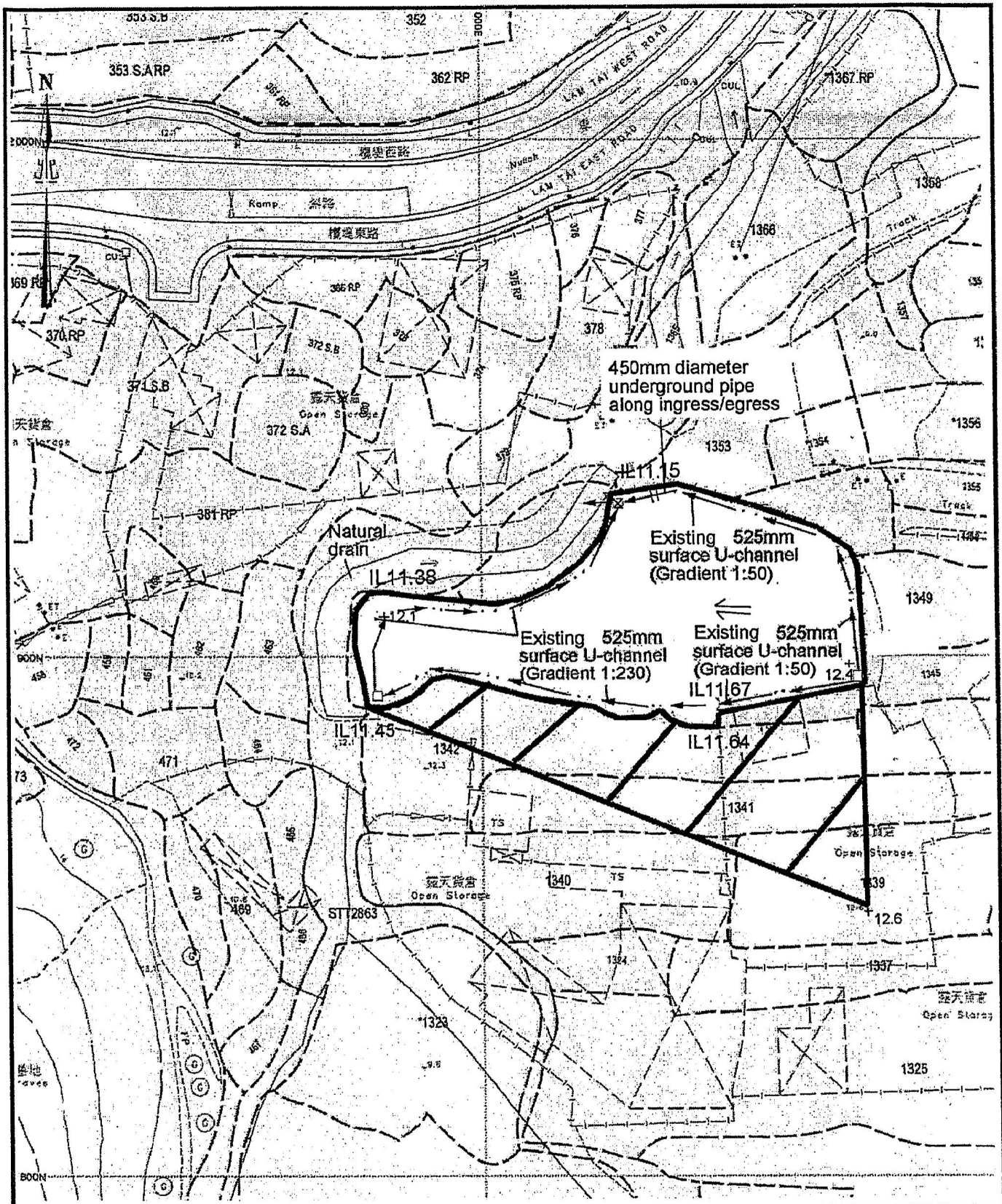
繪圖 DRAWING
A-1



Project 項目名稱: Proposed Temporary Warehouse for Storage of Food & Electronic Goods for a Period of 3 Years at Lots 1343 (Part), 1344 (Part), 1345 (Part), 1349 (Part), 1351 (Part), 1353 (Part) in D.D. 119 & Adjoining Government Land, Yuen Long, N.T.	Drawing Title 圖目: Proposed Layout Plan	Remarks 備註:
	Drawing No. 圖號: Figure 3	Scale 比例: 4:1000

(摘錄自申請人於 26. 5. 2020 提交的申請書)
(Extract from Applicant's
Submission of 26.5.2020)

參考編號 REFERENCE No. AYL-TYST/1030	繪圖 DRAWING A-2
----------------------------------------	-------------------



<p>Project 項目名稱: Proposed Temporary Warehouse for Storage of Food & Electronic Goods for a Period of 3 Years at Lots 1343 (Part), 1344 (Part), 1345 (Part), 1349 (Part), 1351 (Part), 1353 (Part) in D.D. 119 & Adjoining Government Land, Yuen Long, N.T.</p>	<p>Drawing Title 圖目: As-built Drainage Plan</p> <p>Drawing No. 圖號: Figure 4</p>	<p>Remarks 備註:</p> <ul style="list-style-type: none"> <input type="checkbox"/> catchpit +12.6 Level (in mPD) Flow of surface runoff External catchment IL Invert level of catchpit <input checked="" type="checkbox"/> Catchpit with sand trap <p>Scale 比例: 1:1000</p>
------------------------------------------------------------------------------------------------------------------------------------------------------------------------------------------------------------------------------------------------------------------------------------	---------------------------------------------------------------------------------------------------------	---------------------------------------------------------------------------------------------------------------------------------------------------------------------------------------------------------------------------------------------------------------------------------------------------------------------------------------------

(摘錄自申請人於 26. 5. 2020 呈交的申請書)
 (Extract from Applicant's Submission of 26.5.2020)

<p>參考編號 REFERENCE No. A/YL-TYST/1030</p>	<p>繪圖 DRAWING A-3</p>
-------------------------------------------------------------------	-----------------------------------

APPENDIX I

PLANNING APPLICATION No. Lots 1343 (Part), 1344 (Part), 1345(Part), 1349 (Part), 1351 (Part), 1353 (Part), in D.D. 119 & Adjoining Government Land, Yuen Long, N.T.

F.S. NOTES:

1. GENERAL

- FIRE SERVICE INSTALLATIONS SHALL BE PROVIDED IN ACCORDANCE WITH THE CODES OF PRACTICE FOR MINIMUM FIRE SERVICE INSTALLATIONS AND EQUIPMENT AND INSPECTION, TESTING AND MAINTENANCE OF INSTALLATIONS AND EQUIPMENT 2012 (COP 2012), FSD CIRCULAR LETTERS AND THE HONG KONG WATERWORKS STANDARD REQUIREMENTS.
- ALL TUBES AND FITTINGS SHALL BE G.M.S. TO BS1387 MEDIUM GRADE WHERE PIPEWORK UP TO $\phi 150\text{mm}$.
- ALL TUBES AND FITTINGS SHALL BE DUCTILE IRON TO BS EN545 K12 WHERE PIPEWORK ABOVE $\phi 150\text{mm}$.
- ALL DRAIN PIPES SHALL BE DISCHARGED TO A CONSPICUOUS POSITION WITHOUT THE POSSIBILITY OF BEING SUBMERGED.
- ALL PUDDLE FLANGES SHALL BE MADE OF DUCTILE IRON
- THE AGGREGATE AREA OF OPENABLE WINDOWS NOT LESS THAN 6.25% OF THE FLOOR AREA OF THE STRUCTURE

2. HOSE REEL SYSTEM

- NEW FIRE HOSE REEL SHALL BE PROVIDED AS INDICATED ON PLAN TO ENSURE THAT EVERY PART OF THE BUILDING CAN BE REACHED BY A LENGTH OF NOT MORE THAN 30m HOSE REEL TUBING.
- THE WATER SUPPLY FOR HOSE REEL SYSTEM WILL BE FED FROM A NEW 2m³ F.S. FIBREGLASS WATER TANK VIA TWO HOSE REEL PUMPS (DUTY/STANDBY) LOCATED INSIDE FS PUMP ROOM AT EXTERNAL AREA.
- HOSE REEL PUMPS SHALL BE STARTED BY ACTUATION OF ANY BREAKGLASS UNIT FITTED ASIDE EACH HOSE REEL SETS
- ALL FIRE HOSE REEL OUTLETS SHOULD BE HOUSED IN GLASS FRONTED CABINET SECURED UNDER LOCK & KEY.
- ALL FIRE HOSE REEL SHOULD BE PROVIDED WITH FSD APPROVED TYPE INSTRUCTION PLATE & WSD WARNING PLATE
- SECONDARY ELECTRICITY SUPPLY DIRECTLY TEE OFF BEFORE CLIP'S INCOMING MAIN SWITCH SHALL BE PROVIDED FOR THE FH/HR PUMPS.

3. AUTOMATIC SPRINKLER SYSTEM

- NEW AUTOMATIC SPRINKLER SYSTEM SHALL BE PROVIDED AND INSTALLED IN ACCORDANCE WITH LPC RULES FOR AUTOMATIC SPRINKLER INSTALLATIONS INCORPORATING BS EN 12845: 2003 (INCLUDING TECHNICAL BULLETINS, NOTES, COMMENTARY AND RECOMMENDATIONS) AND FSD CIRCULAR LETTER NOTES, COMMENTARY AND RECOMMENDATIONS) AND FSD CIRCULAR LETTER NO. 3/2006 AND 3/2012. THE CLASSIFICATION OF THE OCCUPANCIES WILL BE ORDINARY HAZARD GROUP III.
- ONE NEW 135m³ SPRINKLER WATER TANK WILL BE PROVIDED AS INDICATED ON PLAN. THE TOWN MAIN WATER SUPPLY WILL BE FED FROM SINGLE END.
- TWO NEW SPRINKLER PUMPS (DUTY/STANDBY) AND ONE JOCKEY PUMP SHALL BE PROVIDED IN FS PUMP ROOM LOCATED AT EXTERNAL AREA.
- NEW SPRINKLER CONTROL VALVE SET AND SPRINKLER INLET SHALL BE PROVIDED AS INDICATED ON PLAN.
- A TEST VALVE SHALL BE PROVIDED FOR EACH ZONE OF SPRINKLER PIPE. THIS VALVE SHALL BE AT A CONSPICUOUS POSITION THAT WATER CAN BE DRAINED AWAY EASILY.
- ALL SUBSIDIARY STOP VALVES TO BE ELECTRIC MONITORING TYPE.
- ALL ELECTRIC TYPE VALVES SHOULD GIVE VISUAL SIGNALS TO FIRE SERVICE MAIN SUPERVISORY CONTROL PANEL TO INDICATE THE STATUS (OPEN/CLOSE) OF THE VALVES.
- SECONDARY ELECTRICITY SUPPLY DIRECTLY TEE OFF BEFORE CLIP'S INCOMING MAIN SWITCH SHALL BE PROVIDED FOR THE SPRINKLER PUMPS.
- THE SPRINKLER SYSTEM DESIGN IS BASED ON THE FOLLOWINGS:
HAZARD CLASS : ORDINARY HAZARD GROUP III
TYPE OF STORAGE : FREE STANDING
STORAGE CATEGORY : CATEGORY I
MAXIMUM STORAGE HEIGHT : 4.0m
SPRINKLER PROTECTION : CEILING PROTECTION ONLY

4. FIRE ALARM SYSTEM

- NEW FIRE ALARM SYSTEM SHALL BE PROVIDED IN ACCORDANCE WITH BS 5839-1:2002 +A2:2008 AND FSD CIRCULAR LETTERS NO. 1/2009 & 3/2010.
- NEW BREAKGLASS UNITS AND FIRE ALARM BELLS SHALL BE PROVIDED AT ALL NEW FIRE HOSE REEL POINTS. THE FIRE ALARM INSTALLATION WILL BE INTEGRATED WITH THE HOSE REEL SYSTEM.

5. EMERGENCY LIGHTING

- EMERGENCY LIGHTING SHALL BE PROVIDED IN ACCORDANCE WITH 'BS 5266-PART 1: 2011 AND BS EN 1839: 2013', COVERING ALL AREA. EMERGENCY LIGHTINGS SHALL BE BACKED UP BY BUILT-IN BATTERY AND CAPABLE OF MAINTAINING FUNCTION OF NOT LESS THAN 2 HOURS IN CASE OF POWER FAILURE.

6. EXIT SIGN

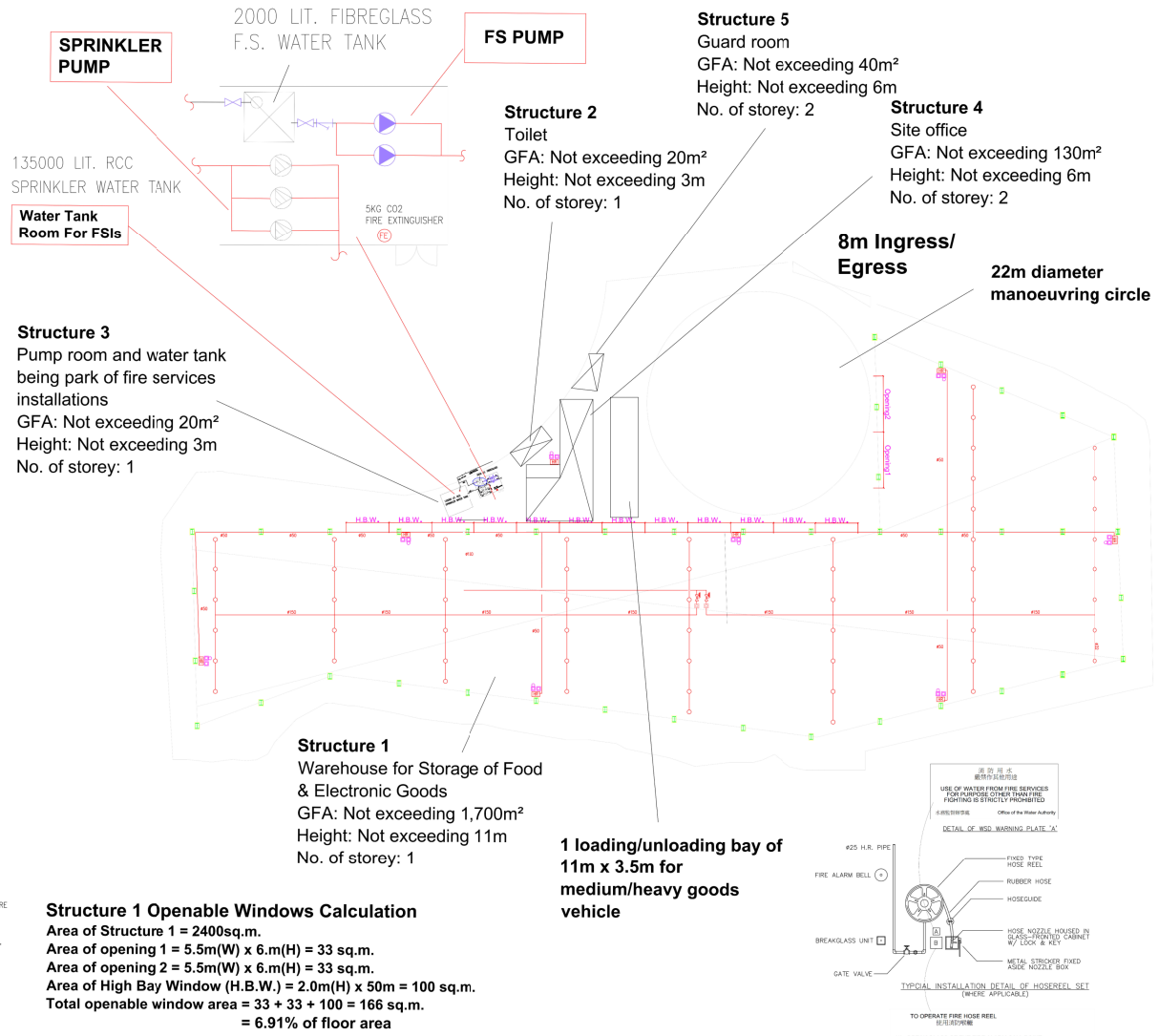
- ALL EXIT SIGNS/DIRECTIONAL EXIT SIGNS SHALL BE PROVIDED IN ACCORDANCE WITH SECTION 5.10 OF COP 2012 AND FSD CIRCULAR LETTER NO. 5/2008. FOR THE BUILDING, EXIT SIGNS/DIRECTIONAL EXIT SIGNS SHALL BE BACKED UP BY BUILT-IN BATTERY AND CAPABLE OF MAINTAINING FUNCTION OF NOT LESS THAN 2 HOURS IN CASE OF POWER FAILURE.

7. PORTABLE APPLIANCES

- PORTABLE HAND OPERATED APPLIANCES SHALL BE PROVIDED AS INDICATED ON PLAN.

LEGEND

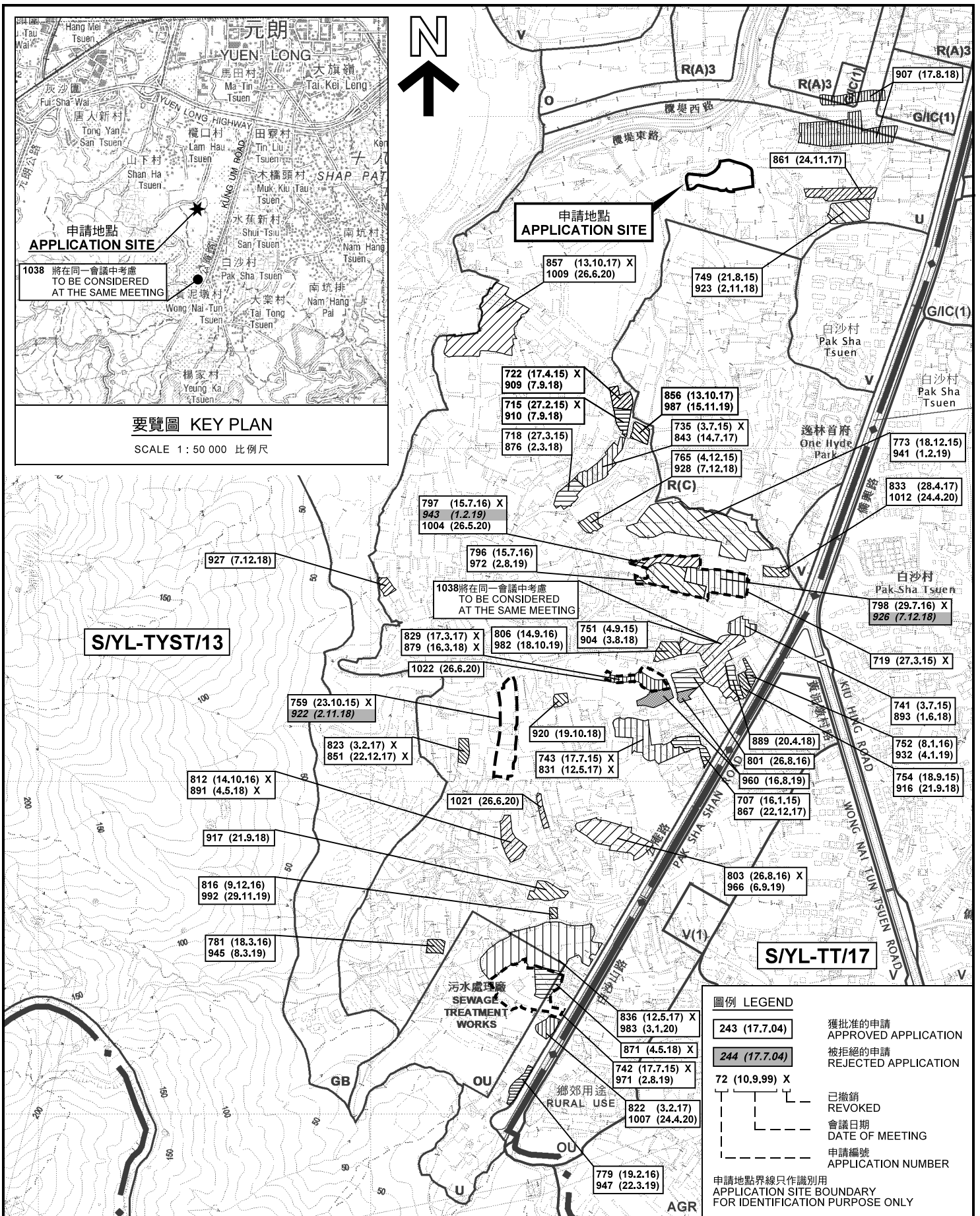
- | | | | | | |
|------------------|------------------|--------------------------------|-----------------------------|-----------------|--------------------------|
| HOSE REEL | EMERGENCY LIGHT | 5KG CO2 FIRE EXTINGUISHER | SPRINKLER CONTROL VALVE SET | PUMP SET | PRESSURE GAUGE |
| BREAK GLASS UNIT | EXIT SIGN | SAND BUCKET | GATE VALVE | Y-TYPE STRAINER | SPRINKLER HEAD (ON PLAN) |
| FIRE ALARM BELL | NON-RETURN VALVE | SUBSIDIARY VALVE / FLOW SWITCH | GATE TYPE (With MONITORING) | SPRINKLER INLET | |



PROJECT : Proposed Temporary Warehouse for Storage of Construction Materials for a Period of 3 Years at Lots 1343 (Part), 1344 (Part), 1345(Part), 1349 (Part), 1351 (Part), 1353 (Part), in D.D. 119 & Adjoining Government Land, Yuen Long, N.T.	DRAWING TITLE : F.S. Notes, Legend, Fire Service Installation Layout Plan	ARCHITECT :	CONSULTANT :	FIRE SERVICE CONTRACTOR : Century Fire Service Engineering Co., Ltd.	NAME : C.K.NG	DATE : 5 JUN 2020	DRAWING NO. : FS-02	REV. : 0
					CHECKED BY :	APPROVED BY :	SCALE : 1:100 (A0)	SOURCE : B.O.O. Ref. BD F.S.D. Ref. FP
REV.	DESCRIPTION	DATE						

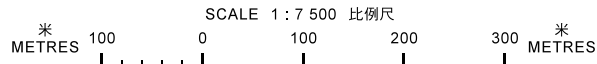
(摘錄自申請人於 11. 6. 2020 呈交的進一步資料)
(Extract from Applicant's Further Information Submitted on 11.6.2020)

參考編號 REFERENCE No. A/YL-TYST/1030	繪圖 DRAWING A-4
-----------------------------------------	-------------------



位置圖及同類申請 LOCATION PLAN WITH SIMILAR APPLICATIONS

臨時貨倉存放食品及電子產品 (為期 3 年)
 元朗唐人新村丈量約份第119約地段第1343號(部分)、第1344號(部分)、
 第1345號(部分)、第1349號(部分)、第1351號(部分)及第1353號(部分)和毗連政府土地
TEMPORARY WAREHOUSE FOR STORAGE OF FOOD AND ELECTRONIC GOODS FOR A PERIOD OF 3 YEARS
 LOTS 1343 (PART), 1344 (PART), 1345 (PART), 1349 (PART), 1351 (PART),
 1353 (PART) IN D.D.119 AND ADJOINING GOVERNMENT LAND,
 TONG YAN SAN TSUEN, YUEN LONG

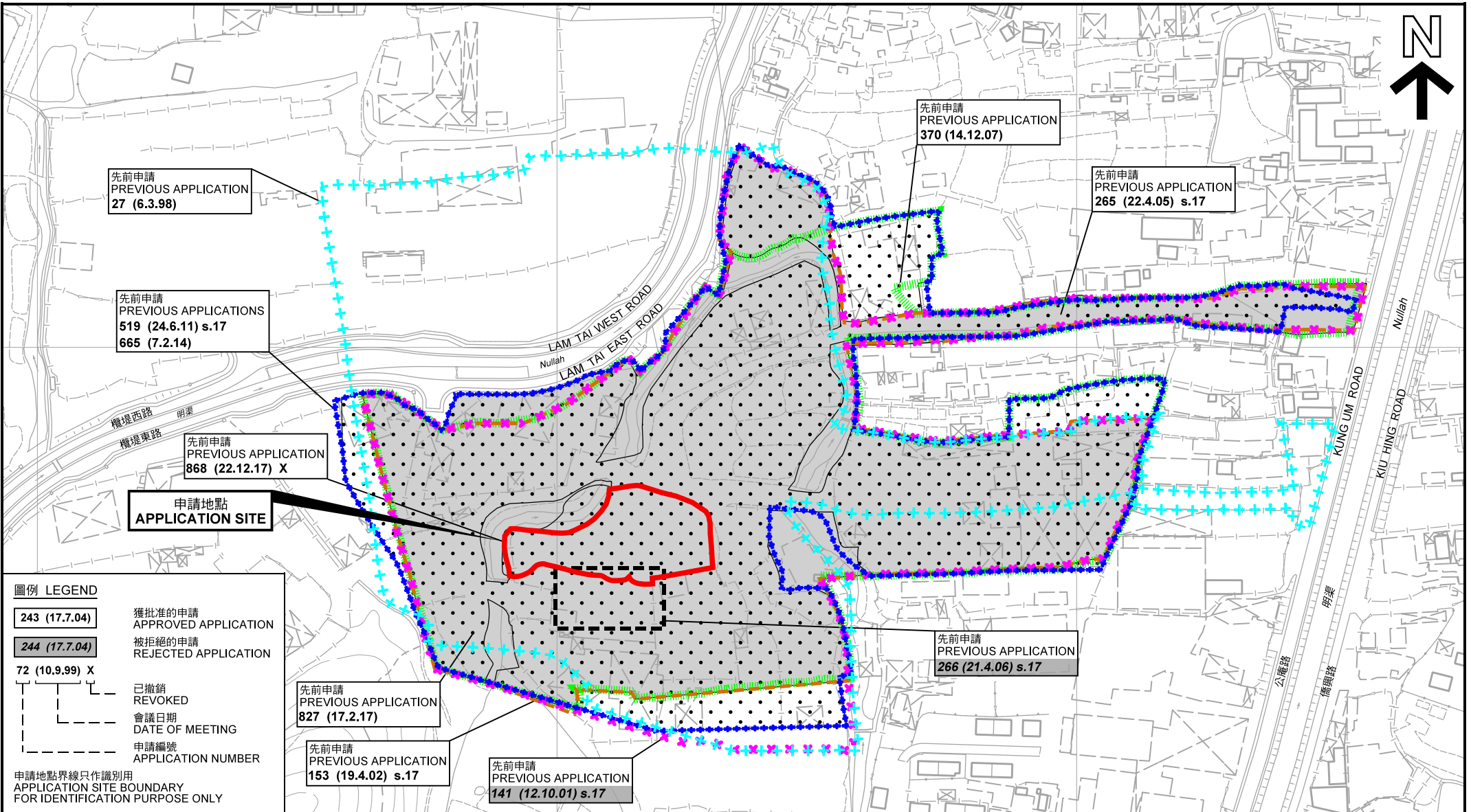


本摘要圖於2020年7月10日擬備，
 所根據的資料為於2020年7月10日
 展示的分區計劃大綱圖編號 S/YL-TYST/13
EXTRACT PLAN PREPARED ON 10.7.2020
BASED ON OUTLINE ZONING PLAN No.
S/YL-TYST/13 EXHIBITED ON 10.7.2020

規劃署
PLANNING DEPARTMENT



參考編號 REFERENCE No. **A/YL-TYST/1030**
 圖 PLAN **A-1a**



先前申請
PREVIOUS APPLICATION
27 (6.3.98)

先前申請
PREVIOUS APPLICATIONS
519 (24.6.11) s.17
665 (7.2.14)

先前申請
PREVIOUS APPLICATION
868 (22.12.17) X

申請地點
APPLICATION SITE

先前申請
PREVIOUS APPLICATION
370 (14.12.07)

先前申請
PREVIOUS APPLICATION
265 (22.4.05) s.17

先前申請
PREVIOUS APPLICATION
266 (21.4.06) s.17

先前申請
PREVIOUS APPLICATION
827 (17.2.17)

先前申請
PREVIOUS APPLICATION
153 (19.4.02) s.17

先前申請
PREVIOUS APPLICATION
141 (12.10.01) s.17

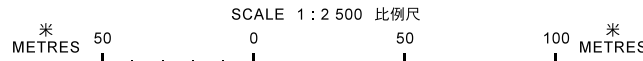
圖例 LEGEND

- 243 (17.7.04) 獲批准的申請
APPROVED APPLICATION
- 244 (17.7.04) 被拒絕的申請
REJECTED APPLICATION
- 72 (10.9.99) X 已撤銷
REVOKED
- - - 會議日期
DATE OF MEETING
- - - 申請編號
APPLICATION NUMBER

申請地點界線只作識別用
APPLICATION SITE BOUNDARY
FOR IDENTIFICATION PURPOSE ONLY

先前申請圖 PREVIOUS APPLICATIONS PLAN

臨時貨倉存放食品及電子產品 (為期 3 年)
元朗唐人新村丈量約份第119約地段第1343號(部分)、第1344號(部分)、
第1345號(部分)、第1349號(部分)、第1351號(部分)及第1353號(部分)和毗連政府土地
TEMPORARY WAREHOUSE FOR STORAGE OF FOOD AND
ELECTRONIC GOODS FOR A PERIOD OF 3 YEARS
LOTS 1343 (PART), 1344 (PART), 1345 (PART), 1349 (PART), 1351 (PART),
1353 (PART) IN D.D.119 AND ADJOINING GOVERNMENT LAND,
TONG YAN SAN TSUEN, YUEN LONG



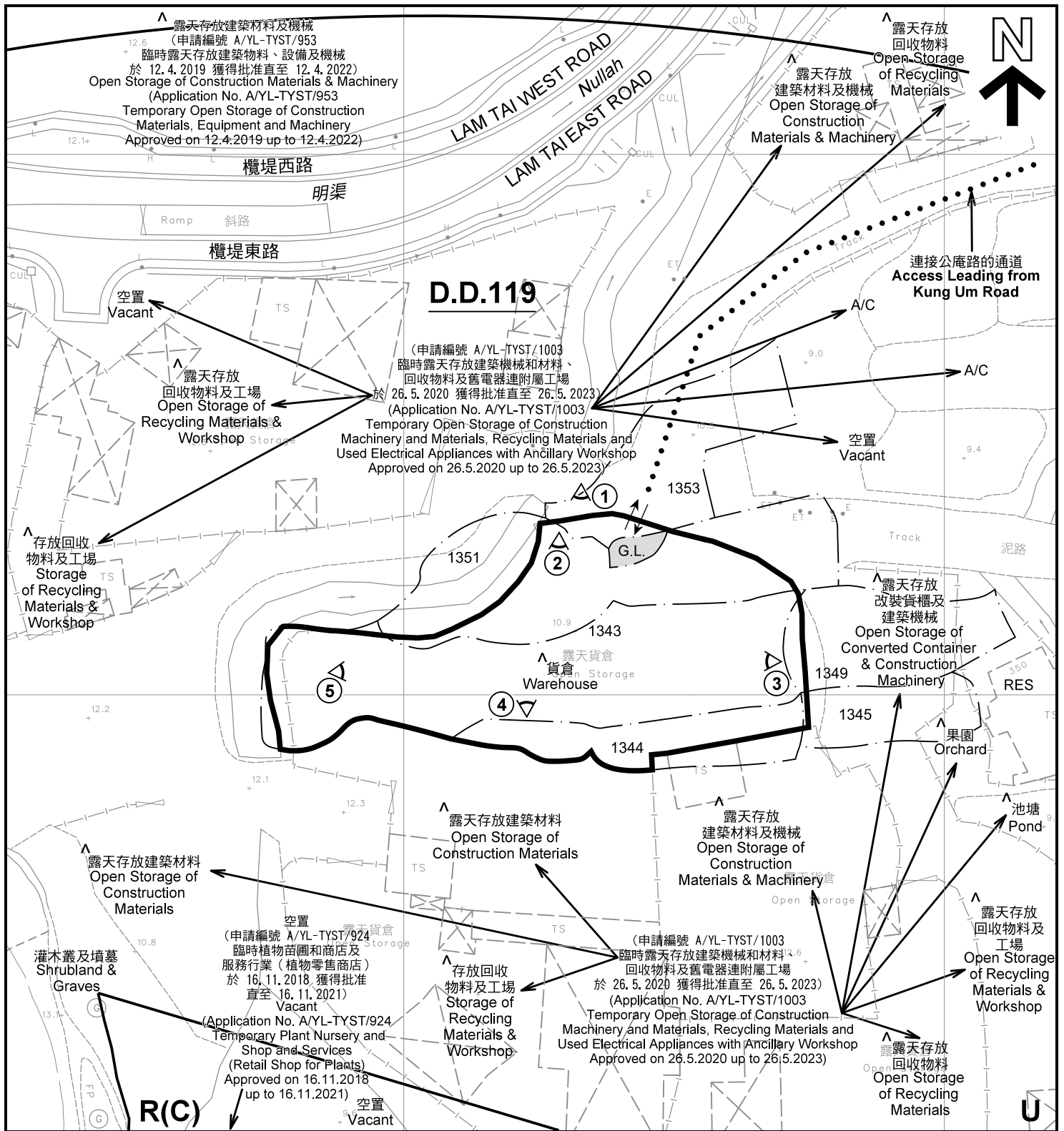
本摘要圖於2020年6月29日擬備，所根據的資料為測量圖編號 6-NW-19A、19B、19C 及 19D
EXTRACT PLAN PREPARED ON 29.6.2020
BASED ON SURVEY SHEETS No.6-NW-19A, 19B, 19C & 19D

規劃署
PLANNING
DEPARTMENT



參考編號
REFERENCE No.
A/YL-TYST/1030

圖 PLAN
A-1b



註釋 Notes :

- (1) 2020年6月5日勘测的土地用途
Land uses shown on this plan are in accordance with the land use survey conducted by the Planning Department on 5.6.2020
- (2) * 土地用途跟1993年6月21日及1993年7月5日勘测的土地用途一致
Indicates that the use is the same as that revealed by the land use survey conducted by the Planning Department on 21.6.1993 & 5.7.1993
- (3) ^ 土地用途跟1993年6月21日及1993年7月5日勘测的土地用途有别
Indicates that the use is different from that revealed by the land use survey conducted by the Planning Department on 21.6.1993 & 5.7.1993

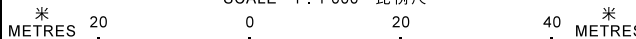
圖例 LEGEND

- 申請地點(界線只作識別用)
APPLICATION SITE (BOUNDARY FOR IDENTIFICATION PURPOSE ONLY)
- R(C)** 住宅(丙類)
RESIDENTIAL (GROUP C)
- U** 未決定用途
UNDETERMINED
- G.L.** 政府土地
GOVERNMENT LAND
- RES** 住用構築物
RESIDENTIAL STRUCTURES
- A/C** 常耕農地
CULTIVATED AGRICULTURAL LAND
- 實地照片的觀景點
VIEWING POINT OF SITE PHOTO
- 入口/出口
INGRESS / EGRESS

平面圖 SITE PLAN

臨時貨倉存放食品及電子產品 (為期 3 年)
元朗唐人新村丈量約份第119約地段第1343號(部分)、第1344號(部分)、第1345號(部分)、第1349號(部分)、第1351號(部分)及第1353號(部分)和毗連政府土地
TEMPORARY WAREHOUSE FOR STORAGE OF FOOD AND ELECTRONIC GOODS FOR A PERIOD OF 3 YEARS
LOTS 1343 (PART), 1344 (PART), 1345 (PART), 1349 (PART), 1351 (PART), 1353 (PART) IN D.D.119 AND ADJOINING GOVERNMENT LAND, TONG YAN SAN TSUEN, YUEN LONG

SCALE 1 : 1 000 比例尺



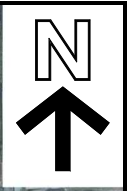
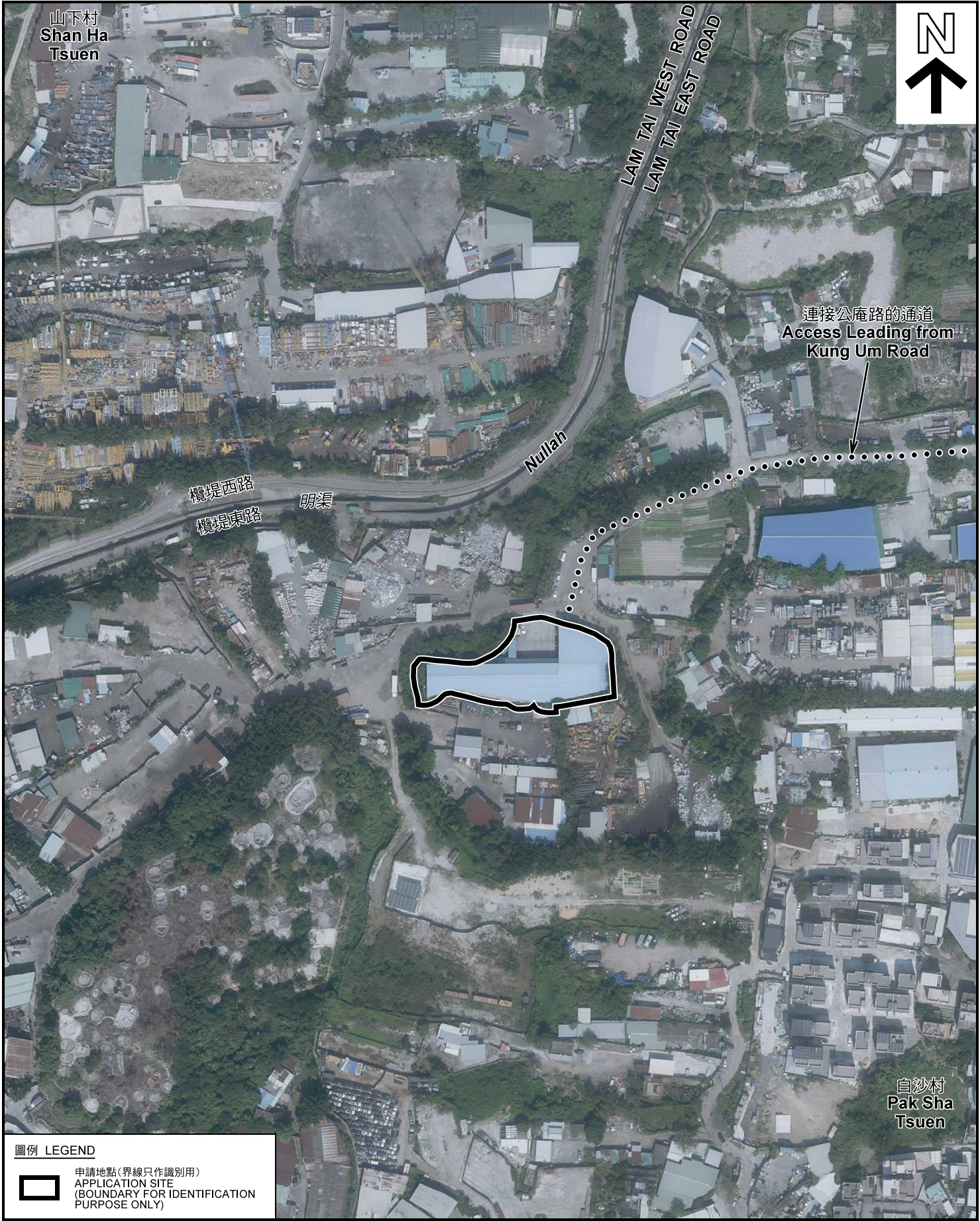
本摘要圖於2020年7月10日擬備, 所根據的資料為測量圖編號 6-NW-19A 及 19C
EXTRACT PLAN PREPARED ON 10.7.2020 BASED ON SURVEY SHEETS No. 6-NW-19A & 19C

規劃署
PLANNING
DEPARTMENT



參考編號
REFERENCE No.
A/YL-TYST/1030

圖 PLAN
A-2



連接公庵路的通道
Access Leading from
Kung Um Road

圖例 LEGEND
 申請地點(界線只作識別用)
 APPLICATION SITE
 (BOUNDARY FOR IDENTIFICATION
 PURPOSE ONLY)

本摘要圖於2020年6月29日擬備，所根據的資料為地政總署於2019年11月4日拍得的航攝照片編號 E074208C
 EXTRACT PLAN PREPARED ON 29.6.2020
 BASED ON AERIAL PHOTO No.
 E074208C TAKEN ON 4.11.2019
 BY LANDS DEPARTMENT

航攝照片 AERIAL PHOTO

臨時貨倉存放食品及電子產品 (為期 3 年)
 元朗唐人新村丈量約份第119約地段第1343號(部分)、第1344號(部分)、
 第1345號(部分)、第1349號(部分)、第1351號(部分)及第1353號(部分)和毗連政府土地
 TEMPORARY WAREHOUSE FOR STORAGE OF FOOD AND
 ELECTRONIC GOODS FOR A PERIOD OF 3 YEARS
 LOTS 1343 (PART), 1344 (PART), 1345 (PART), 1349 (PART), 1351 (PART),
 1353 (PART) IN D.D.119 AND ADJOINING GOVERNMENT LAND,
 TONG YAN SAN TSUEN, YUEN LONG

規劃署
**PLANNING
 DEPARTMENT**



參考編號
 REFERENCE No.
A/YL-TYST/1030

圖 **PLAN**
A-3

申請地點
APPLICATION SITE



申請地點界線只作識別用 APPLICATION SITE BOUNDARY FOR IDENTIFICATION PURPOSE ONLY

本圖於2020年7月10日擬備，所根據的資料為攝於2020年6月5日的實地照片
PLAN PREPARED ON 10.7.2020
BASED ON SITE PHOTOS
TAKEN ON 5.6.2020

實地照片 SITE PHOTOS

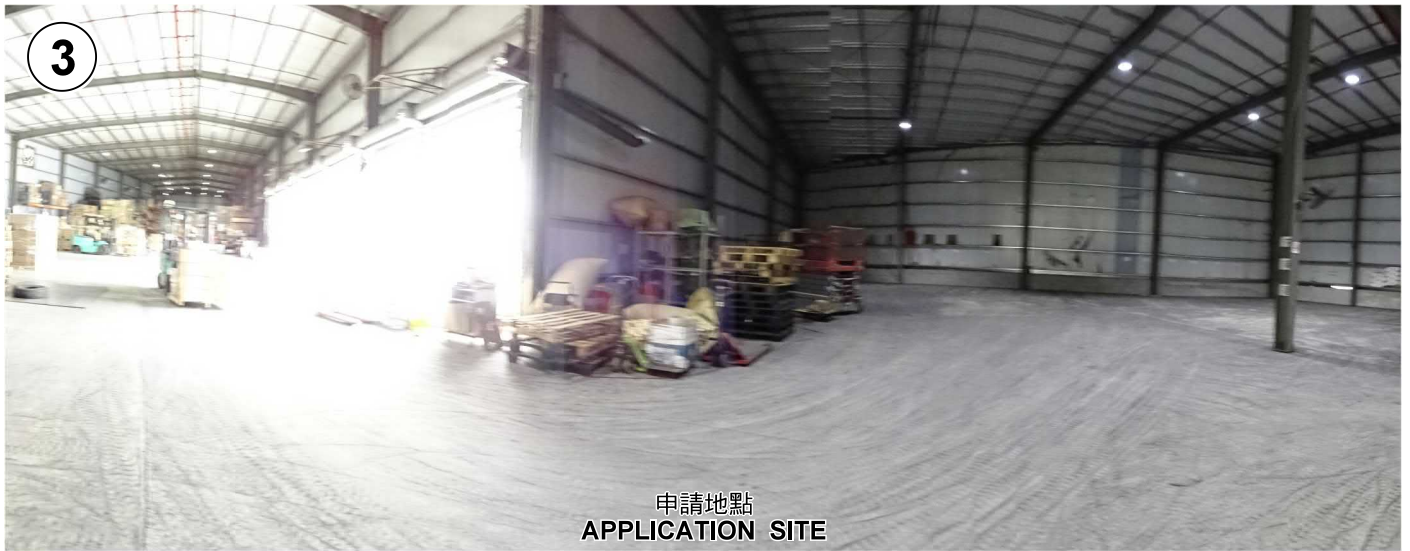
臨時貨倉存放食品及電子產品（為期3年）
元朗唐人新村丈量約份第119約地段第1343號（部分）、第1344號（部分）、
第1345號（部分）、第1349號（部分）、第1351號（部分）及第1353號（部分）和毗連政府土地
TEMPORARY WAREHOUSE FOR STORAGE OF FOOD AND
ELECTRONIC GOODS FOR A PERIOD OF 3 YEARS
LOTS 1343 (PART), 1344 (PART), 1345 (PART), 1349 (PART), 1351 (PART),
1353 (PART) IN D.D. 119 AND ADJOINING GOVERNMENT LAND,
TONG YAN SAN TSUEN, YUEN LONG

規劃署
PLANNING
DEPARTMENT



參考編號
REFERENCE No.
A/YL-TYST/1030

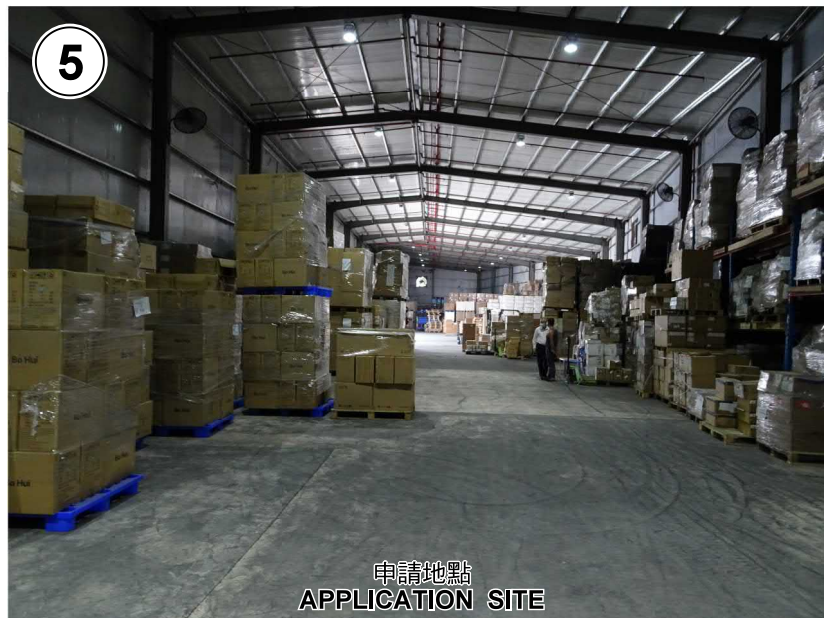
圖 PLAN
A-4a



申請地點
APPLICATION SITE



申請地點
APPLICATION SITE



申請地點
APPLICATION SITE

本圖於2020年6月30日擬備，所根據的資料為攝於2020年6月5日的實地照片
PLAN PREPARED ON 30.6.2020
BASED ON SITE PHOTOS
TAKEN ON 5.6.2020

實地照片 SITE PHOTOS

臨時貨倉存放食品及電子產品（為期 3 年）
元朗唐人新村丈量約份第119約地段第1343號(部分)、第1344號(部分)、
第1345號(部分)、第1349號(部分)、第1351號(部分)及第1353號(部分)和毗連政府土地
TEMPORARY WAREHOUSE FOR STORAGE OF FOOD AND
ELECTRONIC GOODS FOR A PERIOD OF 3 YEARS
LOTS 1343 (PART), 1344 (PART), 1345 (PART), 1349 (PART), 1351 (PART),
1353 (PART) IN D.D.119 AND ADJOINING GOVERNMENT LAND,
TONG YAN SAN TSUEN, YUEN LONG

規 劃 署
**PLANNING
DEPARTMENT**



參考編號
REFERENCE No.
A/YL-TYST/1030

圖 PLAN
A-4b