

Project 項目名稱:  
 Proposed Temporary Open Storage of  
 Construction Material and Metal Ware  
 for a Period of 3 Years at Lots 2813  
 (Part), 2814 (Part), 2815 RP (Part) and  
 2816 RP (Part) in D.D. 120, Tong Yan  
 San Tsuen, Yuen Long, N.T.

Drawing Title 圖名:  
 Location Plan

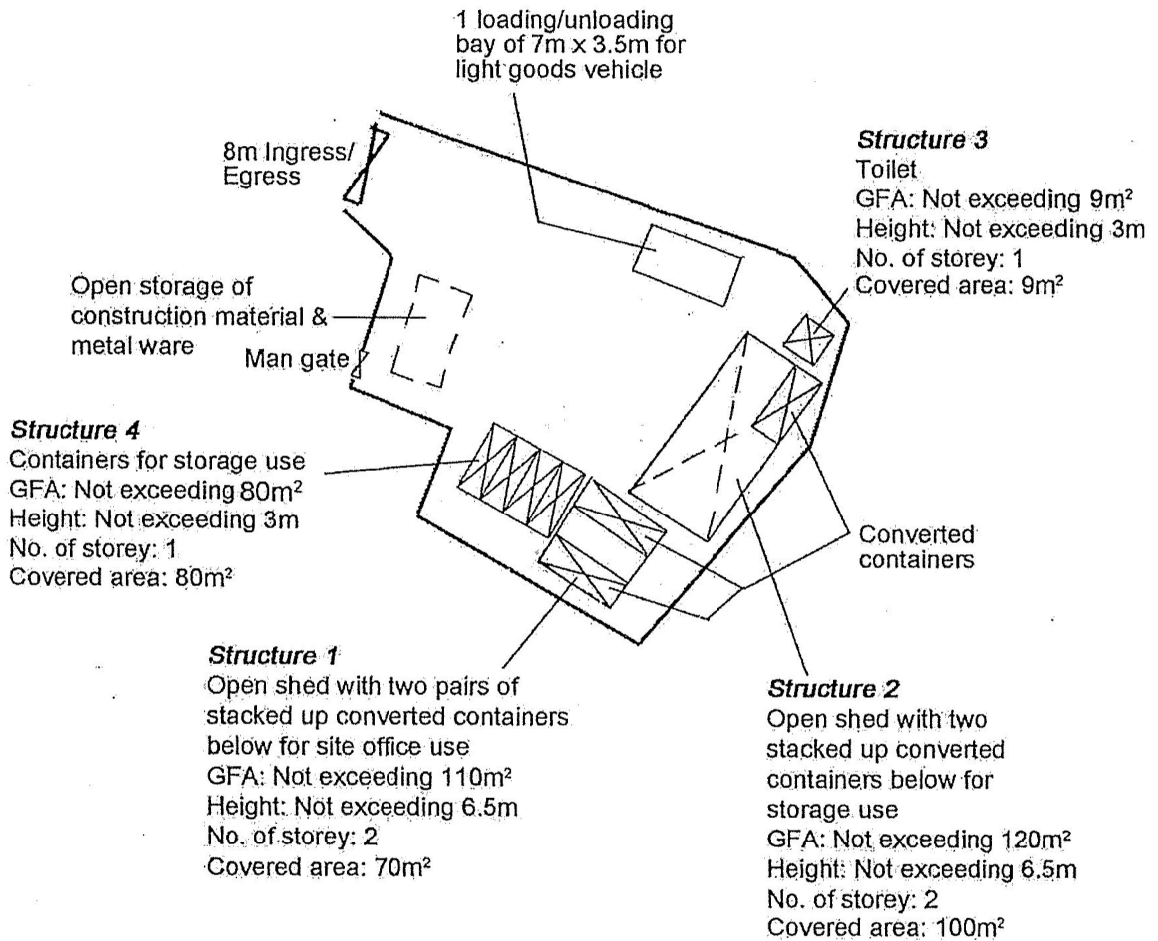
Drawing No. 圖號:  
 Figure 2

Remarks 備註:  
 ●●● Vehicular Access Leading  
 to Kung Um Road

Scale 比例:  
 1:7500

(摘錄自申請人於 2.12.2020 呈交的申請書)  
 (Extract from Applicant's  
 Submission of 2.12.2020)

參考編號 REFERENCE No. AYL-TYST/1065	繪圖 DRAWING A-1
--	-------------------

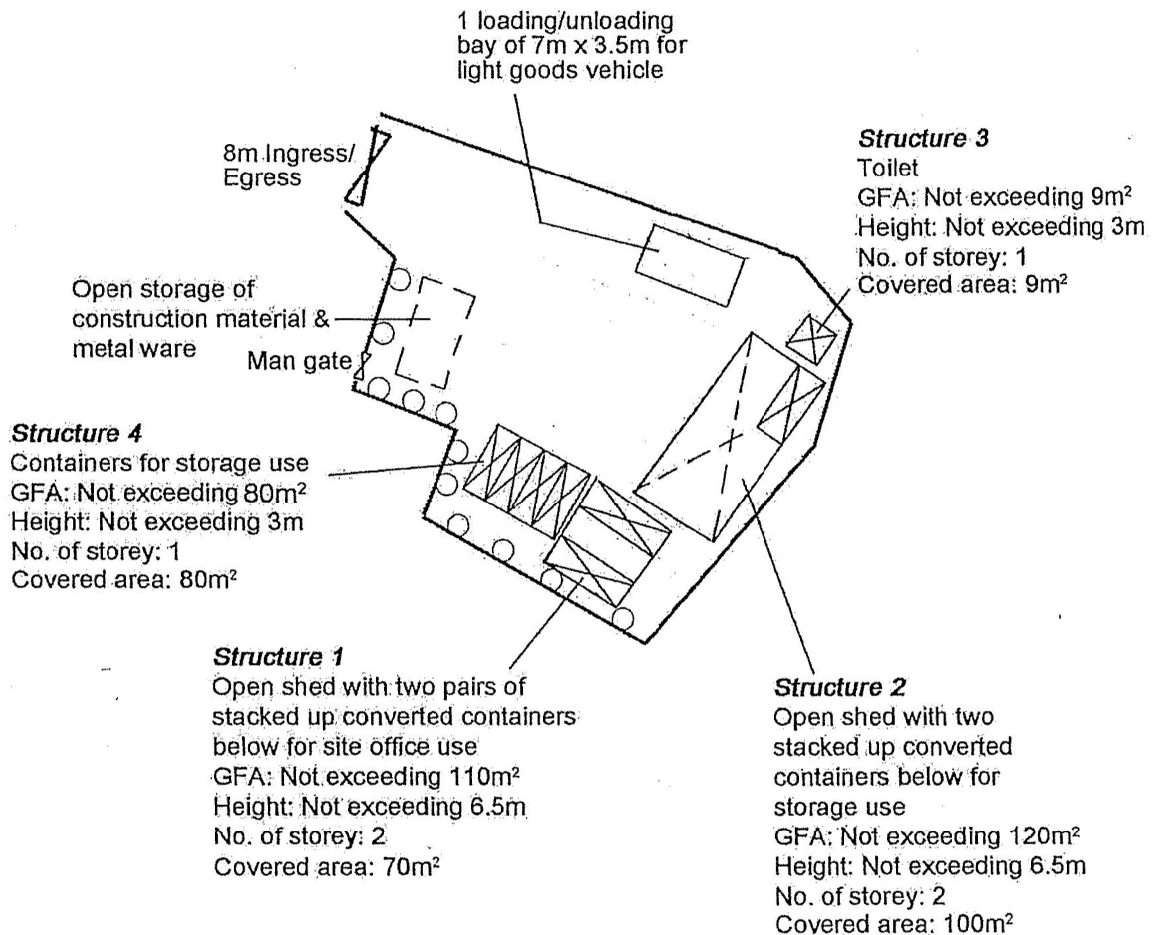


Project 項目名稱: Proposed Temporary Open Storage of Construction Material and Metal Ware for a Period of 3 Years at Lots 2813 (Part), 2814 (Part), 2815 RP (Part) and 2816 RP (Part) in D.D. 120, Tong Yan San Tsuen, Yuen Long, N.T.	Drawing Title 圖名: Proposed Layout Plan	Remarks 備註:
	Drawing No. 圖號: Figure 3	
	Scale 比例: 1:500	

(摘錄自申請人於 2.12.2020 呈交的申請書)  
(Extract from Applicant's Submission of 2.12.2020)

參考編號 REFERENCE No. AYL-TYST/1065	繪圖 DRAWING A-2
--	-------------------

Tree	Approximate Height	Spacing	Quantity
○ Existing <i>Ficus microcarpa</i>	3m to 6.5m	4m	11



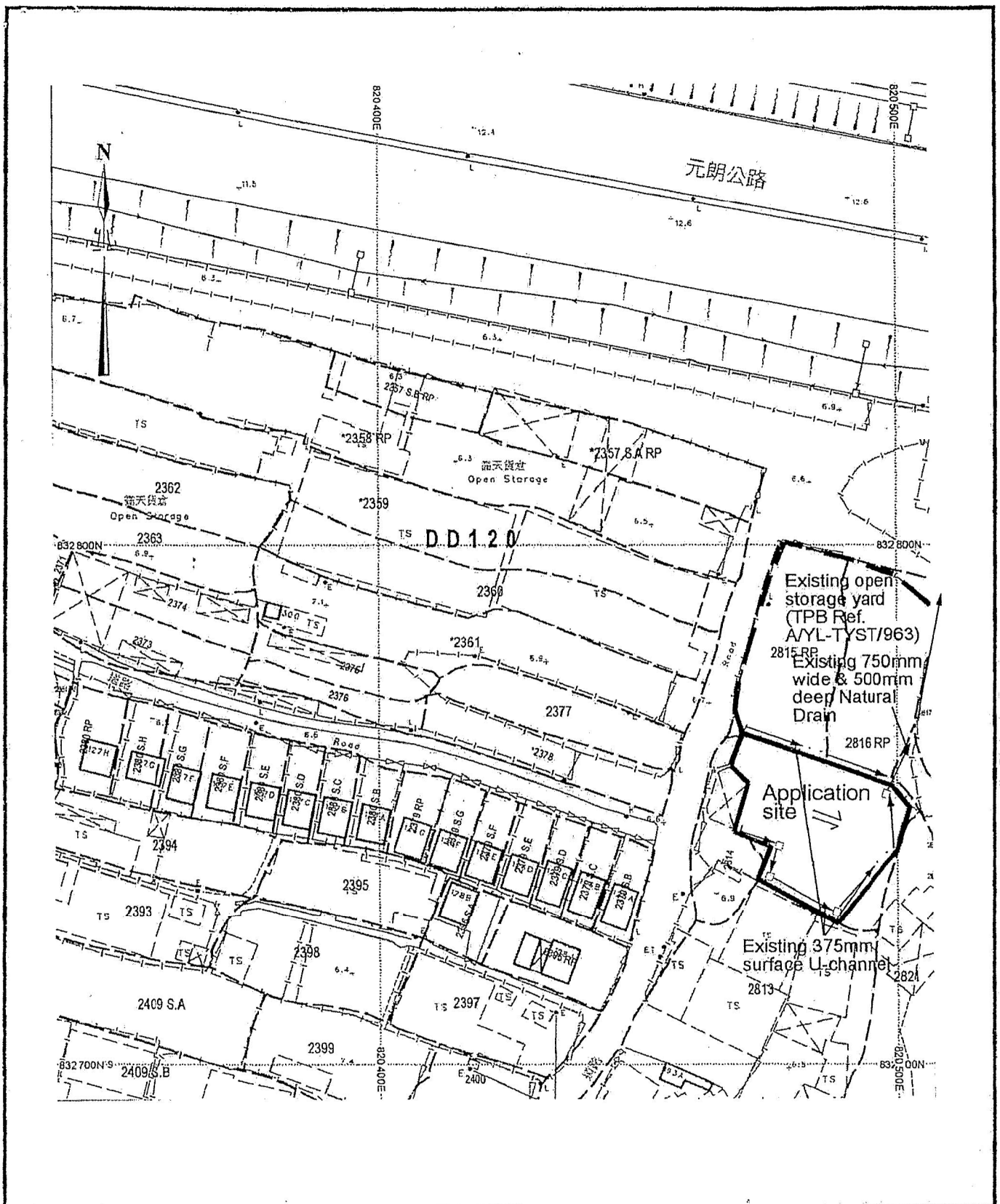
**Tree Preservation Measures:**

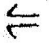

- (i) No open storage of materials/objects will be carried out within the 1m diameter of all the trees within the site boundary;
- (ii) Irrigate the trees at regular interval;
- (iii) Replace dead tree, if any; &
- (iv) Removal of weeds and climbers adjacent to the existing trees.

Project 項目名稱: Proposed Temporary Open Storage of Construction Material and Metal Ware for a Period of 3 Years at Lots 2813 (Part), 2814 (Part), 2815 RP (Part) and 2816 RP (Part) in D.D. 120, Tong Yan San Tsuen, Yuen Long, N.T.	Drawing Title 圖目: Proposed Tree Preservation Plan	Remarks 備註:
	Drawing No. 圖號: Figure 4	
		Scale 比例: 1:500

(摘錄自申請人於 2.12.2020 呈交的申請書)  
(Extract from Applicant's Submission of 2.12.2020)

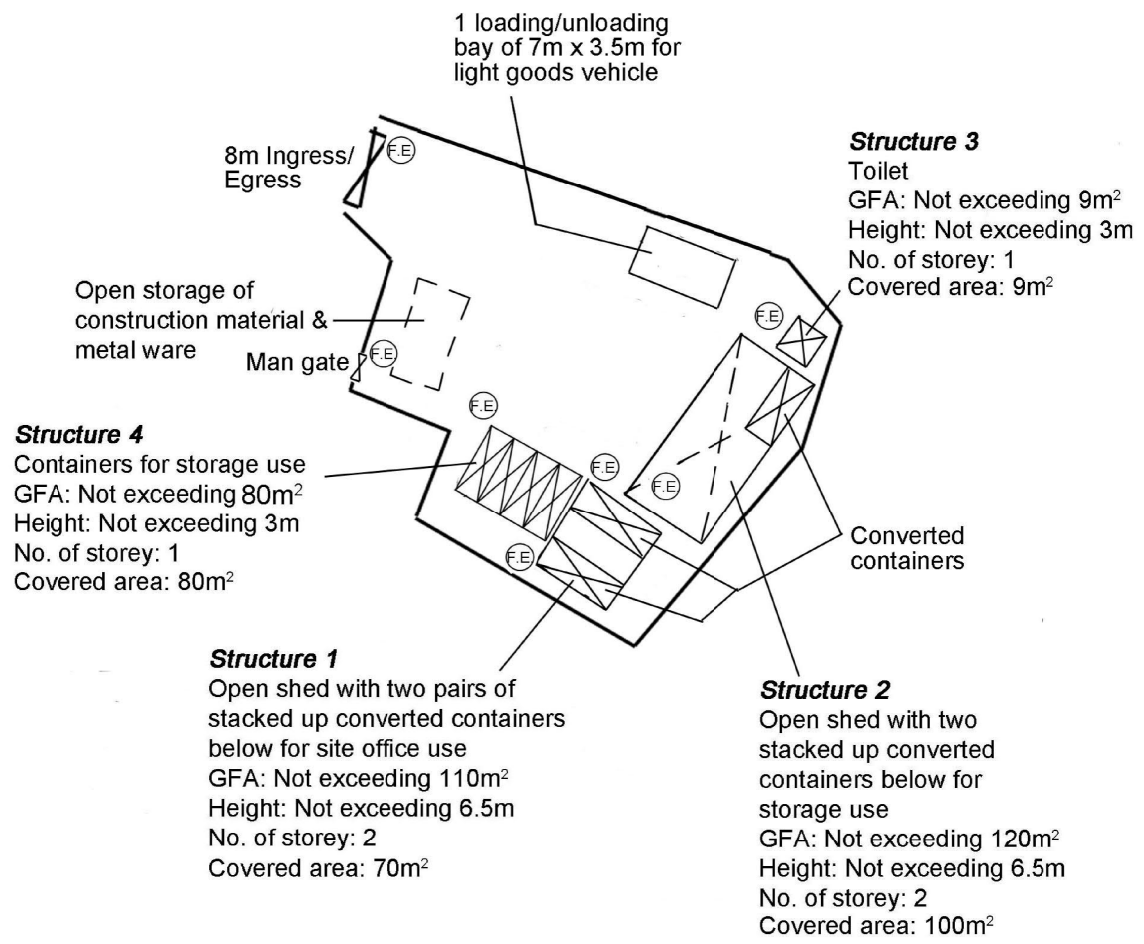
參考編號 REFERENCE No. AYL-TYST/1065	繪圖 DRAWING A-3
--	-------------------



<p>Project 項目名稱          Proposed Temporary Open Storage of Construction Material and Metal Ware for a Period of 3 Years at Lots 2813 (Part), 2814 (Part), 2815 RP (Part) and 2816 RP (Part) in D.D. 120, Tong Yan San Tsuen, Yuen Long, N.T.</p>	<p>Drawing Title 圖目:          As-built Drainage Plan</p>	<p>Remarks 備註   Flow of Surface Runoff   Existing catchpit</p>
	<p>Drawing No          Figure 5</p>	<p>Scale 比例          4:1000</p>

(摘錄自申請人於 2. 12. 2020 呈交的申請書)  
 (Extract from Applicant's Submission of 2.12.2020)

<p>參考編號          REFERENCE No.          AYL-TYST/1065</p>	<p>繪圖 DRAWING          A-4</p>
---	------------------------------------



Project 項目名稱:  
Proposed Temporary Open Storage of Construction Material and Metal Ware for a Period of 3 Years at Lots 2813 (Part), 2814 (Part), 2815 RP (Part) and 2816 RP (Part) in D.D. 120, Tong Yan San Tsuen, Yuen Long, N.T.

Drawing Title 圖名:  
Proposed Fire Service Installations Plan

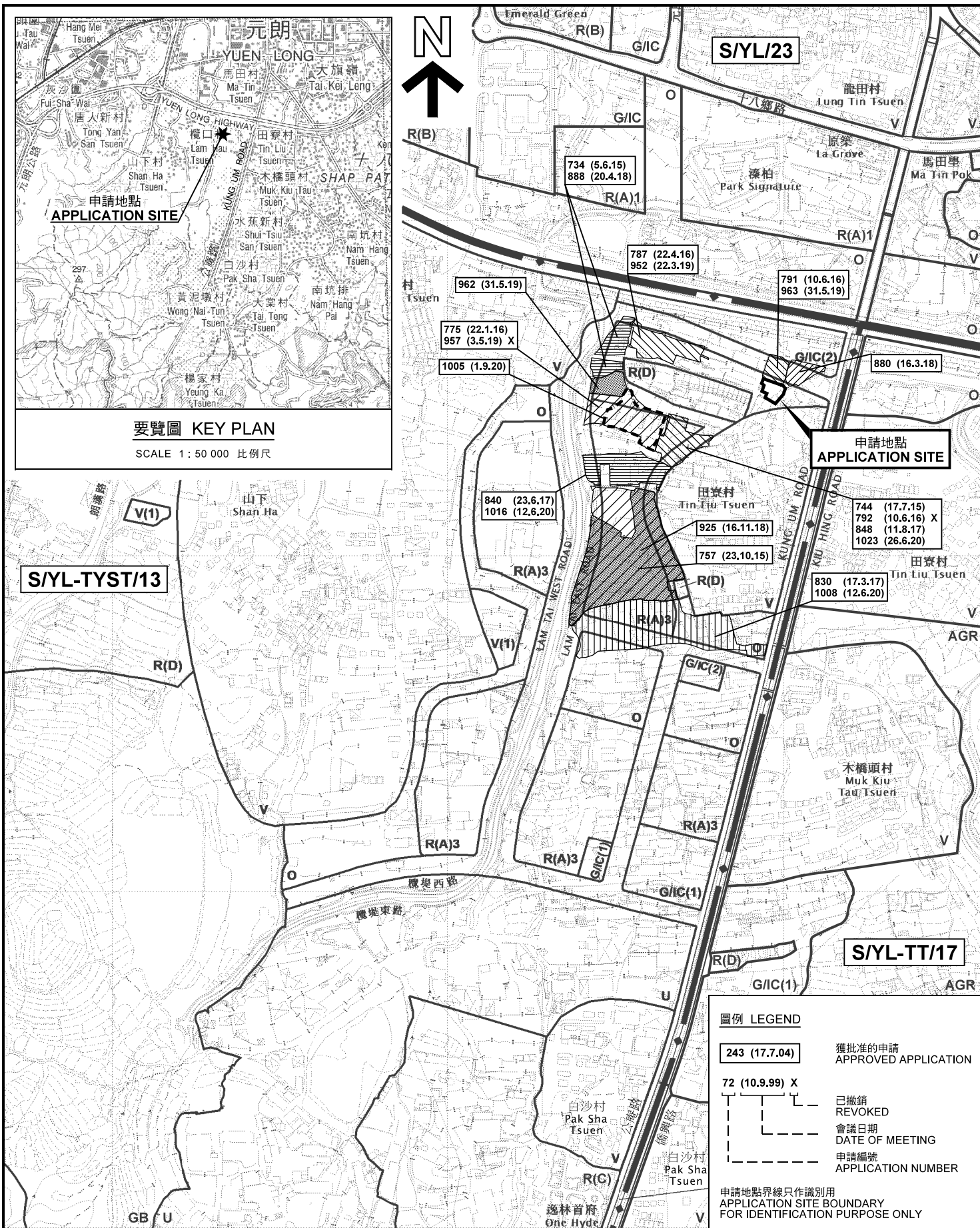
Drawing No. 圖號:  
Figure 1

Remarks 備註:  
FE 9 litre water type fire extinguisher

Scale 比例:  
~~1:500~~

(摘錄自申請人於 23. 12. 2020 呈交的進一步資料)  
(Extract from Applicant's Further Information Submitted on 23.12.2020)

參考編號 REFERENCE No. AYL-TYST/1065	繪圖 DRAWING A-5
--	-------------------



要覽圖 KEY PLAN

SCALE 1 : 50 000 比例尺

S/YL/23

734 (5.6.15)  
888 (20.4.18)

787 (22.4.16)  
952 (22.3.19)

791 (10.6.16)  
963 (31.5.19)

880 (16.3.18)

744 (17.7.15)  
792 (10.6.16) X  
848 (11.8.17)  
1023 (26.6.20)

830 (17.3.17)  
1008 (12.6.20)

S/YL-TT/17

S/YL-TYST/13

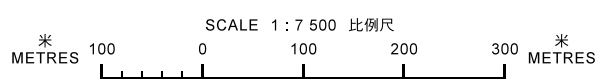
圖例 LEGEND

- 243 (17.7.04) 獲批准的申請 APPROVED APPLICATION
- 72 (10.9.99) X 已撤銷 REVOKED
- 會議日期 DATE OF MEETING
- 申請編號 APPLICATION NUMBER

申請地點界線只作識別用  
APPLICATION SITE BOUNDARY  
FOR IDENTIFICATION PURPOSE ONLY

位置圖及同類申請 LOCATION PLAN WITH SIMILAR APPLICATIONS

臨時露天存放建築材料及金屬製品的規劃許可續期 (為期3年)  
元朗唐人新村丈量約份第120約地段第2813號 (部分)、  
第2814號 (部分)、第2815號餘段 (部分) 及第2816號餘段 (部分)  
RENEWAL OF PLANNING APPROVAL FOR TEMPORARY OPEN STORAGE OF  
CONSTRUCTION MATERIALS AND METAL WARE FOR A PERIOD OF 3 YEARS  
LOTS 2813 (PART), 2814 (PART), 2815 RP (PART) AND 2816 RP (PART)  
IN D.D.120, TONG YAN SAN TSUEN, YUEN LONG



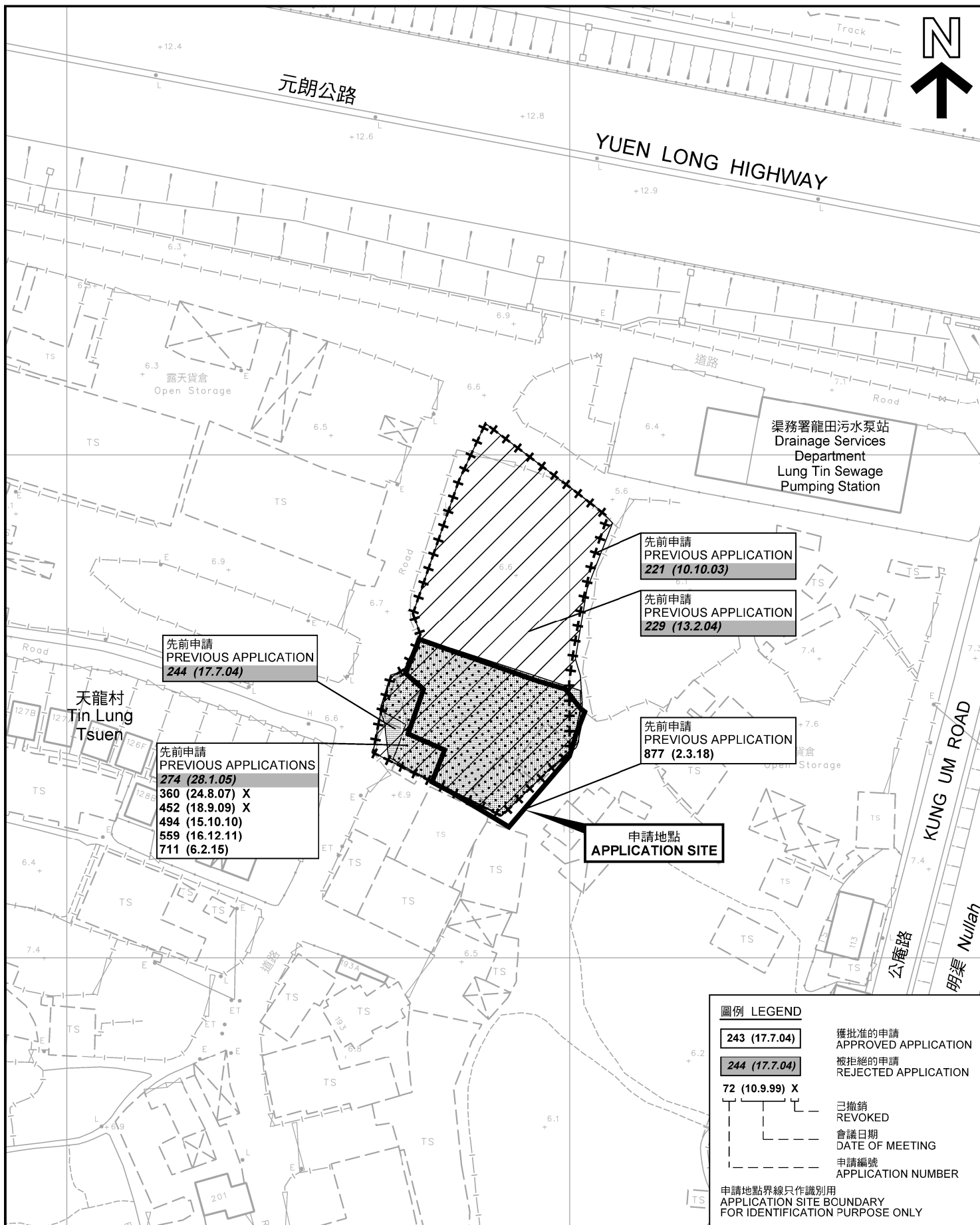
本摘要圖於2021年1月13日擬備，  
所根據的資料為於2020年7月10日  
展示的分區計劃大綱圖編號 S/YL-TYST/13  
EXTRACT PLAN PREPARED ON 13.1.2021  
BASED ON OUTLINE ZONING PLAN NO.  
S/YL-TYST/13 EXHIBITED ON 10.7.2020

規劃署  
PLANNING  
DEPARTMENT



參考編號  
REFERENCE No.  
A/YL-TYST/1065

圖 PLAN  
A-1a



**先前申請圖 PREVIOUS APPLICATIONS PLAN**

臨時露天存放建築材料及金屬製品的規劃許可續期（為期3年）  
元朗唐人新村丈量約份第120約地段第2813號（部分）、  
第2814號（部分）、第2815號餘段（部分）及第2816號餘段（部分）

RENEWAL OF PLANNING APPROVAL FOR TEMPORARY OPEN STORAGE OF  
CONSTRUCTION MATERIALS AND METAL WARE FOR A PERIOD OF 3 YEARS  
LOTS 2813 (PART), 2814 (PART), 2815 RP (PART) AND 2816 RP (PART)  
IN D.D.120, TONG YAN SAN TSUEN, YUEN LONG

SCALE 1 : 1 000 比例尺

米 METRES 20 0 20 40 米 METRES

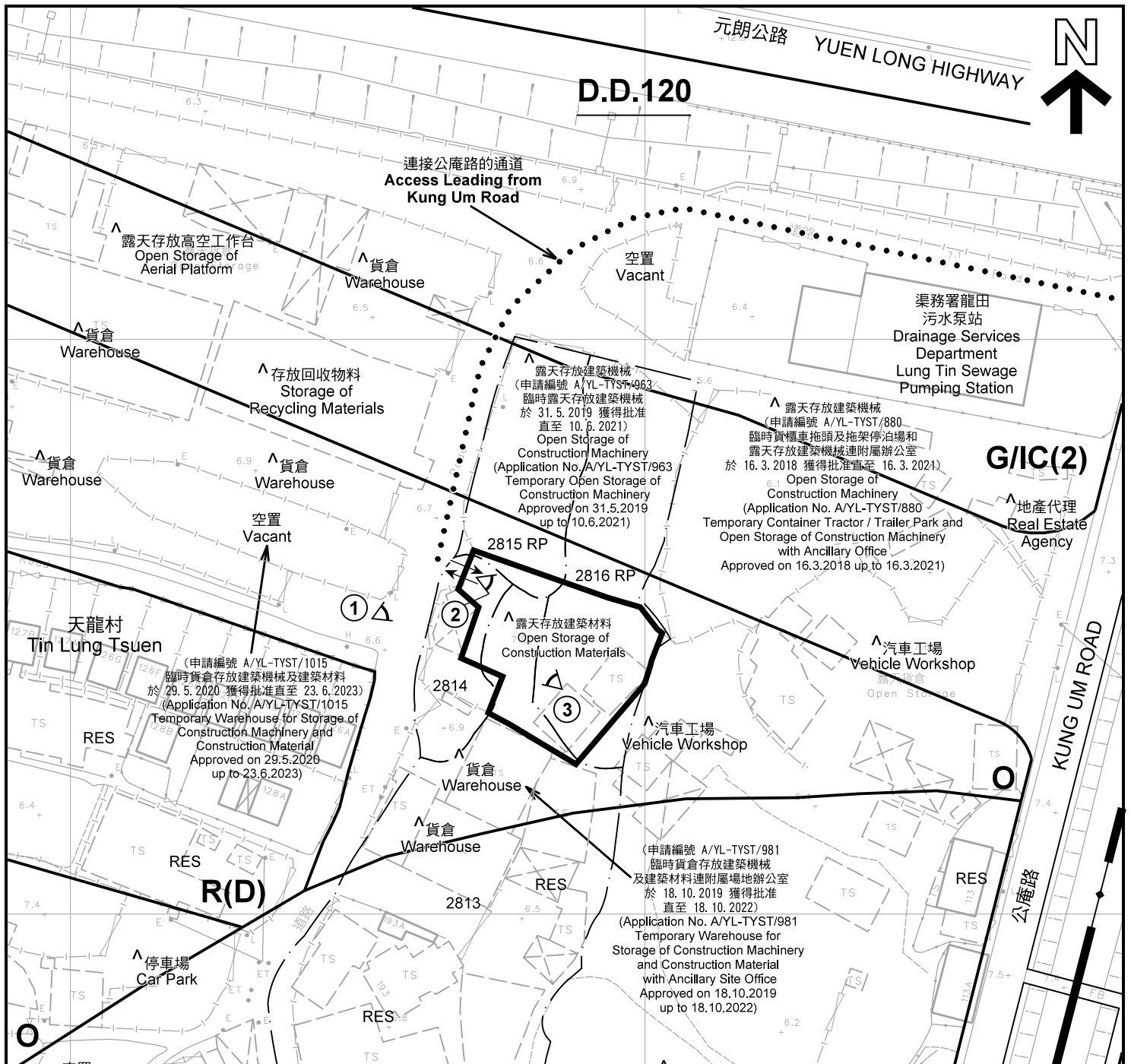
本摘要圖於2021年1月14日擬備，所根據的資料為測量圖編號 6-NW-14D  
EXTRACT PLAN PREPARED ON 14.1.2021  
BASED ON SURVEY SHEET No.  
6-NW-14D

規劃署  
PLANNING  
DEPARTMENT



參考編號  
REFERENCE No.  
A/YL-TYST/1065

圖 PLAN  
A-1b



**註釋 Notes:**

- (1) 2021年1月12日勘測的土地用途  
Land uses shown on this plan are in accordance with the land use survey conducted by the Planning Department on 12.1.2021
- (2) \* 土地用途跟1993年6月21日及7月1日勘測的土地用途一致  
Indicates that the use is the same as that revealed by the land use survey conducted by the Planning Department on 21.6.1993 & 1.7.1993
- (3) ^ 土地用途跟1993年6月21日及7月1日勘測的土地用途有別  
Indicates that the use is different from that revealed by the land use survey conducted by the Planning Department on 21.6.1993 & 1.7.1993

**平面圖 SITE PLAN**

本摘要圖於2021年1月13日擬備，所根據的資料為測量圖編號 6-NW-14D  
EXTRACT PLAN PREPARED ON 13.1.2021  
BASED ON SURVEY SHEET No. 6-NW-14D

臨時露天存放建築材料及金屬製品的規劃許可續期（為期3年）  
元朗唐人新村丈量約份第120約地段第2813號（部分）、  
第2814號（部分）、第2815號餘段（部分）及第2816號餘段（部分）  
RENEWAL OF PLANNING APPROVAL FOR TEMPORARY OPEN STORAGE OF  
CONSTRUCTION MATERIALS AND METAL WARE FOR A PERIOD OF 3 YEARS  
LOTS 2813 (PART), 2814 (PART), 2815 RP (PART) AND 2816 RP (PART)  
IN D.D.120, TONG YAN SAN TSUEN, YUEN LONG

SCALE 1 : 1 000 比例尺  
米 METRES 20 0 20 40 米 METRES

**圖例 LEGEND**

- 申請地點(界線只作識別用)  
APPLICATION SITE (BOUNDARY FOR IDENTIFICATION PURPOSE ONLY)
- R(D)** 住宅(丁類)  
RESIDENTIAL (GROUP D)
- G/IC** 政府、機構或社區  
GOVERNMENT, INSTITUTION OR COMMUNITY
- O** 休憩用地  
OPEN SPACE
- V** 鄉村式發展  
VILLAGE TYPE DEVELOPMENT
- RES** 住用構築物  
RESIDENTIAL STRUCTURES
- ①** 實地照片的觀景點  
VIEWING POINT OF SITE PHOTO
- ↔** 入口/出口  
INGRESS / EGRESS

**規劃署  
PLANNING  
DEPARTMENT**



參考編號  
REFERENCE No.

**A/YL-TYST/1065**

**圖 PLAN**

**A-2**





圖例 LEGEND



申請地點(界線只作識別用)  
APPLICATION SITE  
(BOUNDARY FOR IDENTIFICATION  
PURPOSE ONLY)

本摘要圖於2021年1月11日擬備，所根據的資料為地政總署於2020年2月18日拍得的航攝照片編號 E089435C  
EXTRACT PLAN PREPARED ON 11.1.2021  
BASED ON AERIAL PHOTO No.  
E089435C TAKEN ON 18.2.2020  
BY LANDS DEPARTMENT

航攝照片 AERIAL PHOTO

臨時露天存放建築材料及金屬製品的規劃許可續期(為期3年)  
元朗唐人新村丈量約份第120約地段第2813號(部分)、  
第2814號(部分)、第2815號餘段(部分)及第2816號餘段(部分)  
RENEWAL OF PLANNING APPROVAL FOR TEMPORARY OPEN STORAGE OF  
CONSTRUCTION MATERIALS AND METAL WARE FOR A PERIOD OF 3 YEARS  
LOTS 2813 (PART), 2814 (PART), 2815 RP (PART) AND 2816 RP (PART)  
IN D.D.120, TONG YAN SAN TSUEN, YUEN LONG

規劃署  
PLANNING  
DEPARTMENT



參考編號  
REFERENCE No.  
A/YL-TYST/1065

圖 PLAN  
A-3

申請地點  
APPLICATION SITE



1

連接公庵路的通道  
Access Leading from  
Kung Um Road



2

申請地點  
APPLICATION SITE



3

申請地點  
APPLICATION SITE

實地照片 SITE PHOTOS

本圖於2021年1月13日擬備，所根據的資料為攝於2021年1月12日的實地照片  
PLAN PREPARED ON 13.1.2021  
BASED ON SITE PHOTOS  
TAKEN ON 12.1.2021

臨時露天存放建築材料及金屬製品的規劃許可續期（為期3年）  
元朗唐人新村丈量約份第120約地段第2813號（部分）、  
第2814號（部分）、第2815號餘段（部分）及第2816號餘段（部分）  
RENEWAL OF PLANNING APPROVAL FOR TEMPORARY OPEN STORAGE OF  
CONSTRUCTION MATERIALS AND METAL WARE FOR A PERIOD OF 3 YEARS  
LOTS 2813 (PART), 2814 (PART), 2815 RP (PART) AND 2816 RP (PART)  
IN D.D.120, TONG YAN SAN TSUEN, YUEN LONG

規劃署  
PLANNING  
DEPARTMENT



參考編號  
REFERENCE No.  
A/YL-TYST/1065

圖 PLAN  
A-4