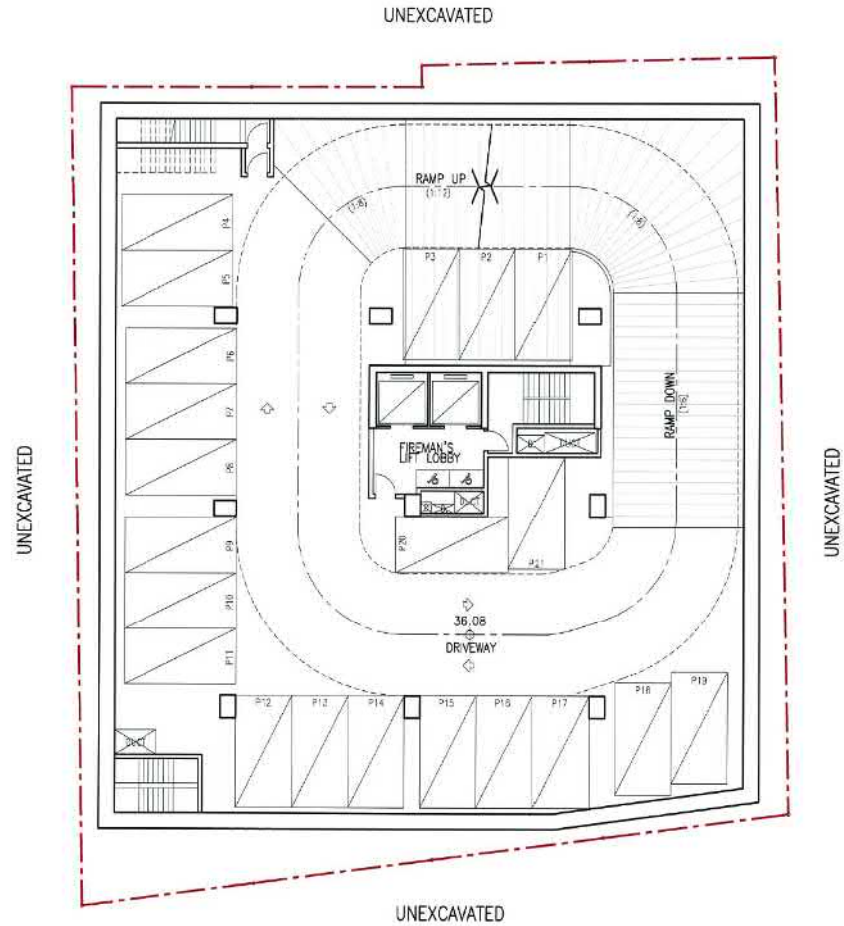


Proposed Office Re-Development (For S16 Application) - Basement 3 Floor Plan (24 Nos of Car Park)  
 At Nos. 3-6 Glenealy, Central Hong Kong


  
 馬梁  
 SK-11-01 (Scale 1:200)  
 02-04-2019

(資料來源：由申請人提供)  
 (SOURCE : SUBMITTED BY THE APPLICANT)

參考編號 REFERENCE No. A/H3/441	繪圖 DRAWING R - 1
-----------------------------------	------------------------

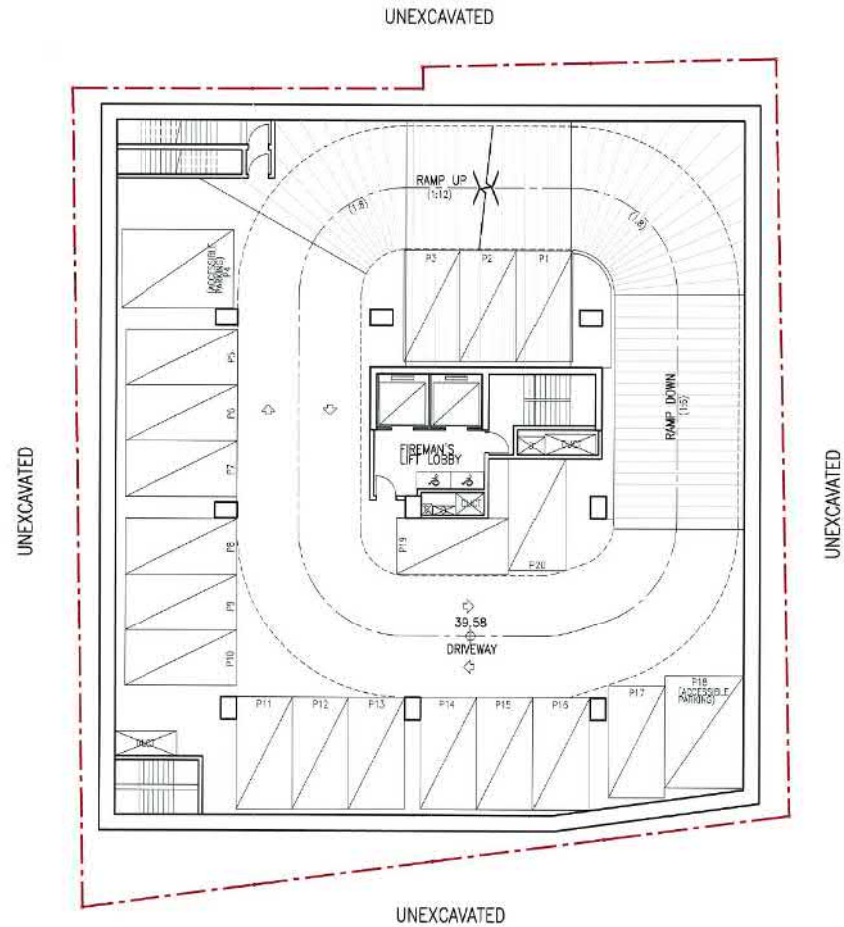


Proposed Office Re-Development (For S16 Application) - Basement 2 Floor Plan (21 Nos of Car Park)  
 At Nos. 3-6 Glenealy, Central Hong Kong


  
 SK-11-02 (Scale 1:200)  
 02-04-2019

(資料來源：由申請人提供)  
 (SOURCE : SUBMITTED BY THE APPLICANT)

參考編號 REFERENCE No. A/H3/441	繪圖 DRAWING R - 2
-----------------------------------	------------------------

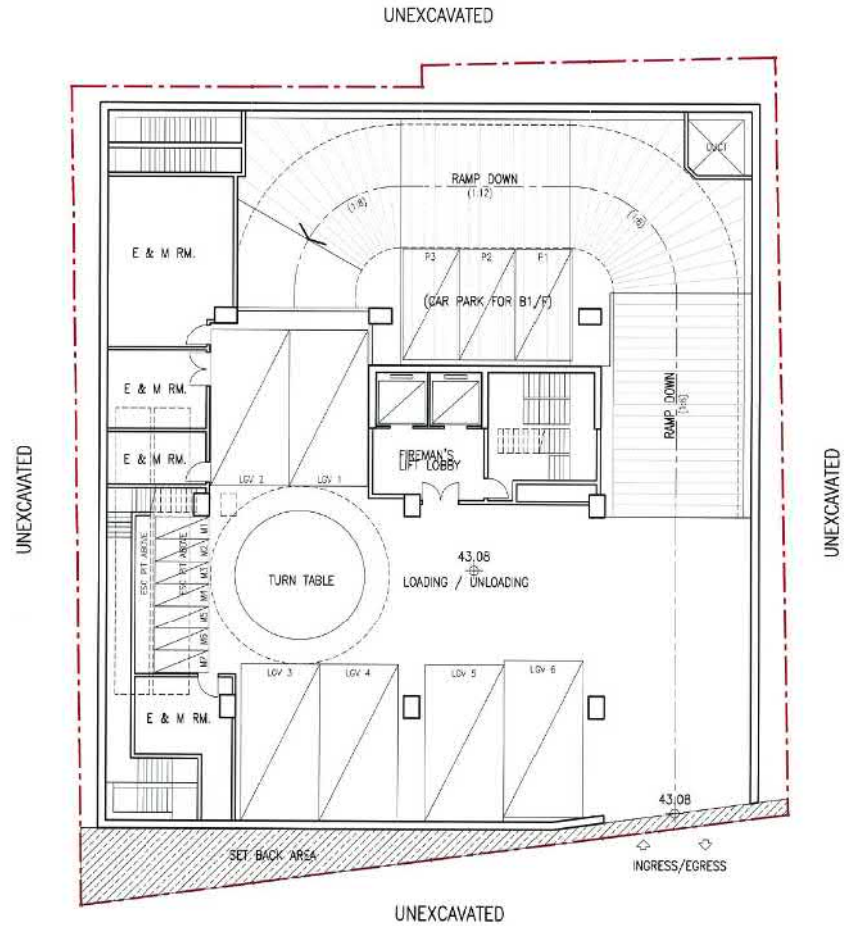


Proposed Office Re-Development (For S16 Application) - Basement 1 Floor Plan (20 Nos of Car Park)  
 At Nos. 3-6 Glenealy, Central Hong Kong



(資料來源：由申請人提供)  
 (SOURCE : SUBMITTED BY THE APPLICANT)

參考編號 REFERENCE No. A/H3/441	繪圖 DRAWING R - 3
-----------------------------------	------------------------



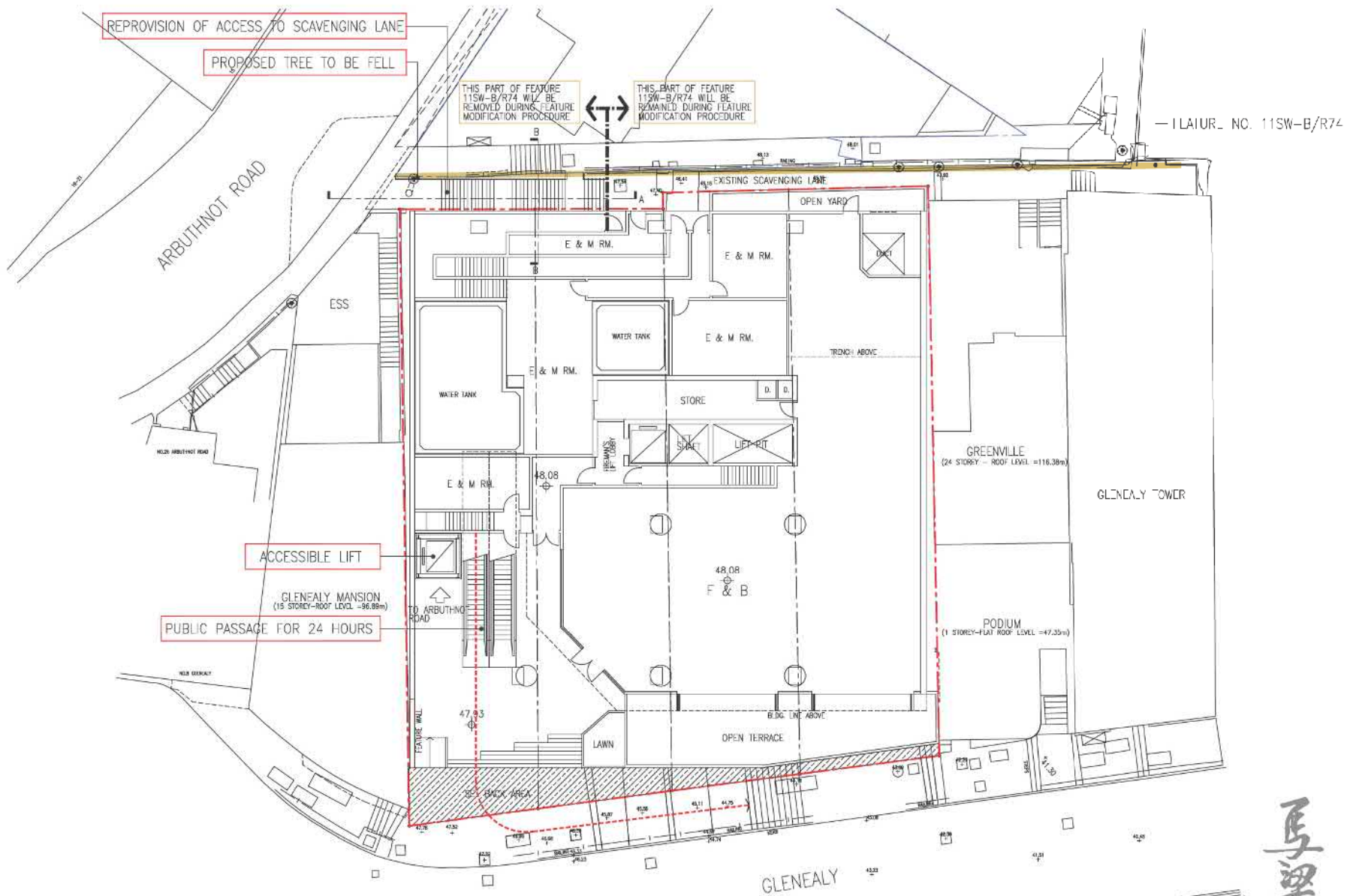
Proposed Office Re-Development (For S16 Application) - Lower Ground Floor Plan  
 At Nos. 3-6 Glenealy, Hong Kong



SK-11-04 (Scale 1:200)  
 02-04-2019

(資料來源：由申請人提供)  
 (SOURCE : SUBMITTED BY THE APPLICANT)

參考編號 REFERENCE No. A/H3/441	繪圖 DRAWING R - 4
-----------------------------------	------------------------



(Scheme A)  
 Proposed Office Re-Development (For S16 Application) - Plan At Level 48.08  
 At Nos. 3-6 Glenealy, Hong Kong

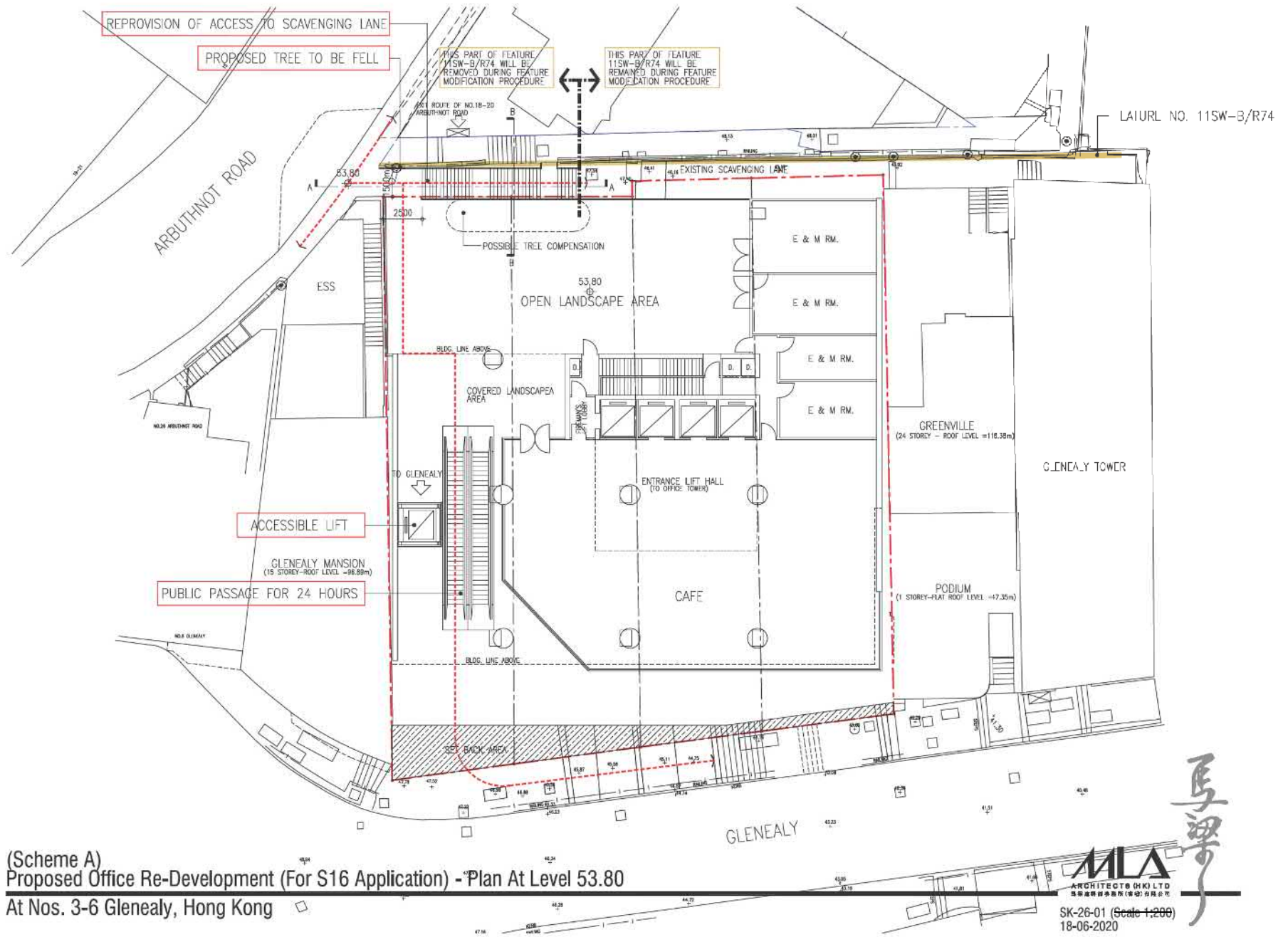
**MLA**  
 ARCHITECTS (HK) LTD  
 馬梁建築師事務所 (香港) 有限公司  
 SK-26-02 (Scale 1:200)  
 18-06-2020

馬梁

(資料來源：由申請人提供)  
 (SOURCE : SUBMITTED BY THE APPLICANT)

參考編號 REFERENCE No. A/H3/441	繪圖 DRAWING R - 5
-----------------------------------	------------------------





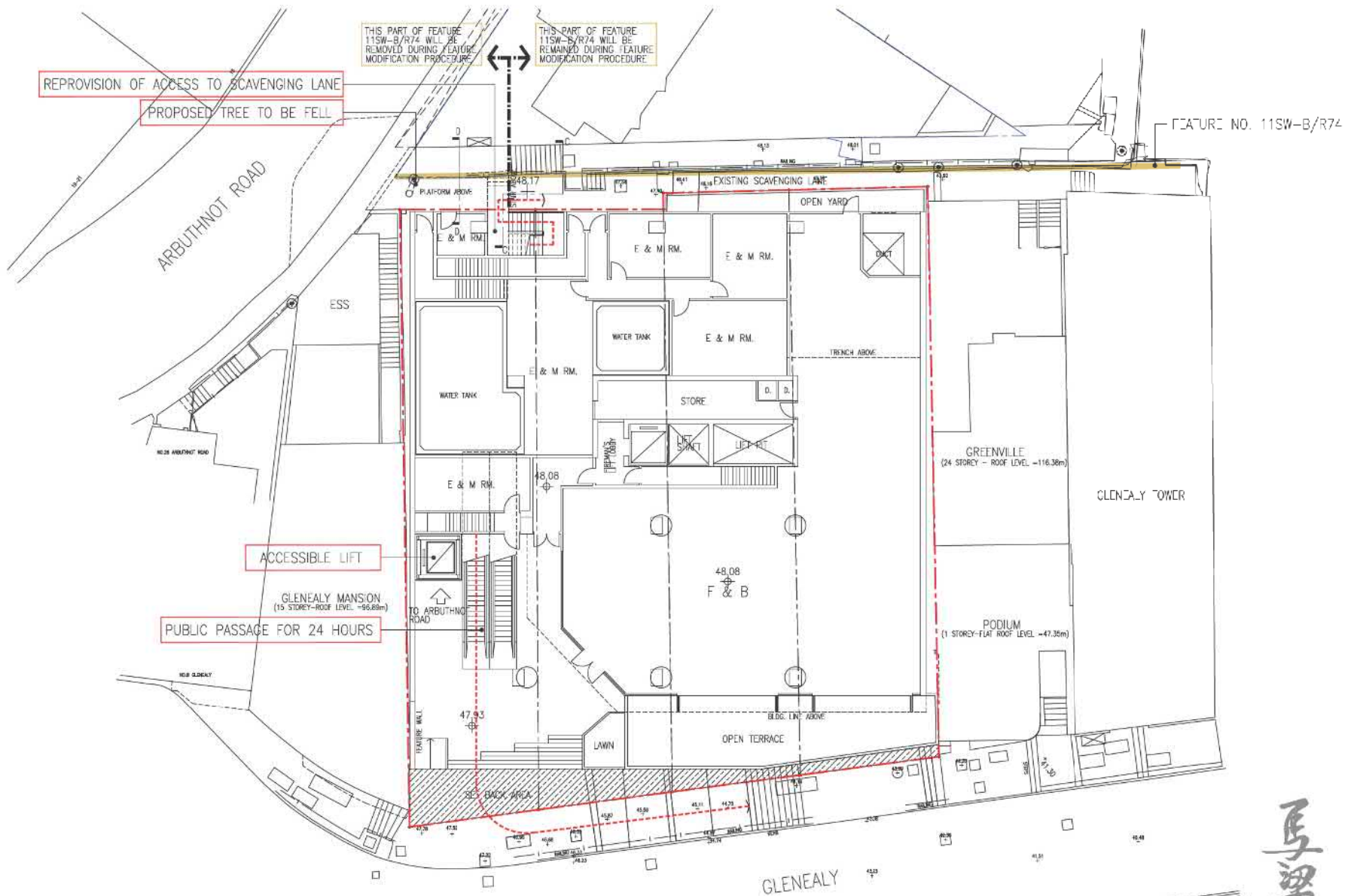
(Scheme A)  
 Proposed Office Re-Development (For S16 Application) - Plan At Level 53.80  
 At Nos. 3-6 Glenealy, Hong Kong

**MLA**  
 ARCHITECTS (HK) LTD  
 馬梁建築師事務所 (香港) 有限公司  
 SK-26-01 (Scale 1:200)  
 18-06-2020

馬梁

(資料來源：由申請人提供)  
 (SOURCE : SUBMITTED BY THE APPLICANT)

參考編號 REFERENCE No. A/H3/441	繪圖 DRAWING R - 6
-----------------------------------	------------------------



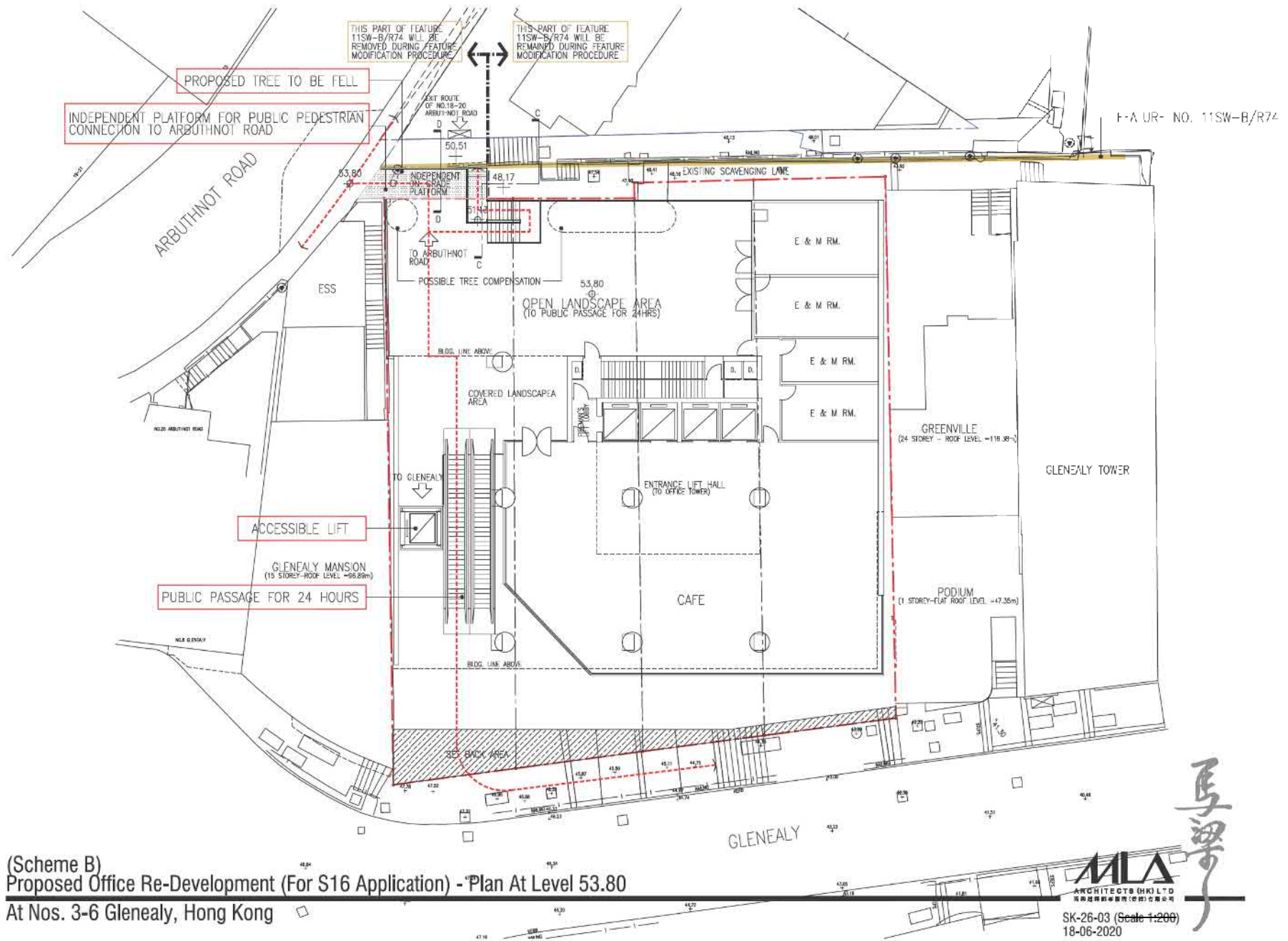
(Scheme B)  
**Proposed Office Re-Development (For S16 Application) - Plan At Level 48.08**  
 At Nos. 3-6 Glenealy, Hong Kong

**MLA**  
 ARCHITECTS (HK) LTD  
 良木建築師事務所 (香港) 有限公司  
 SK-26-04 (Scale 1:200)  
 18-06-2020



(資料來源：由申請人提供)  
 (SOURCE : SUBMITTED BY THE APPLICANT)

參考編號 REFERENCE No. <b>A/H3/441</b>	繪圖 DRAWING <b>R - 7</b>
--	-------------------------------

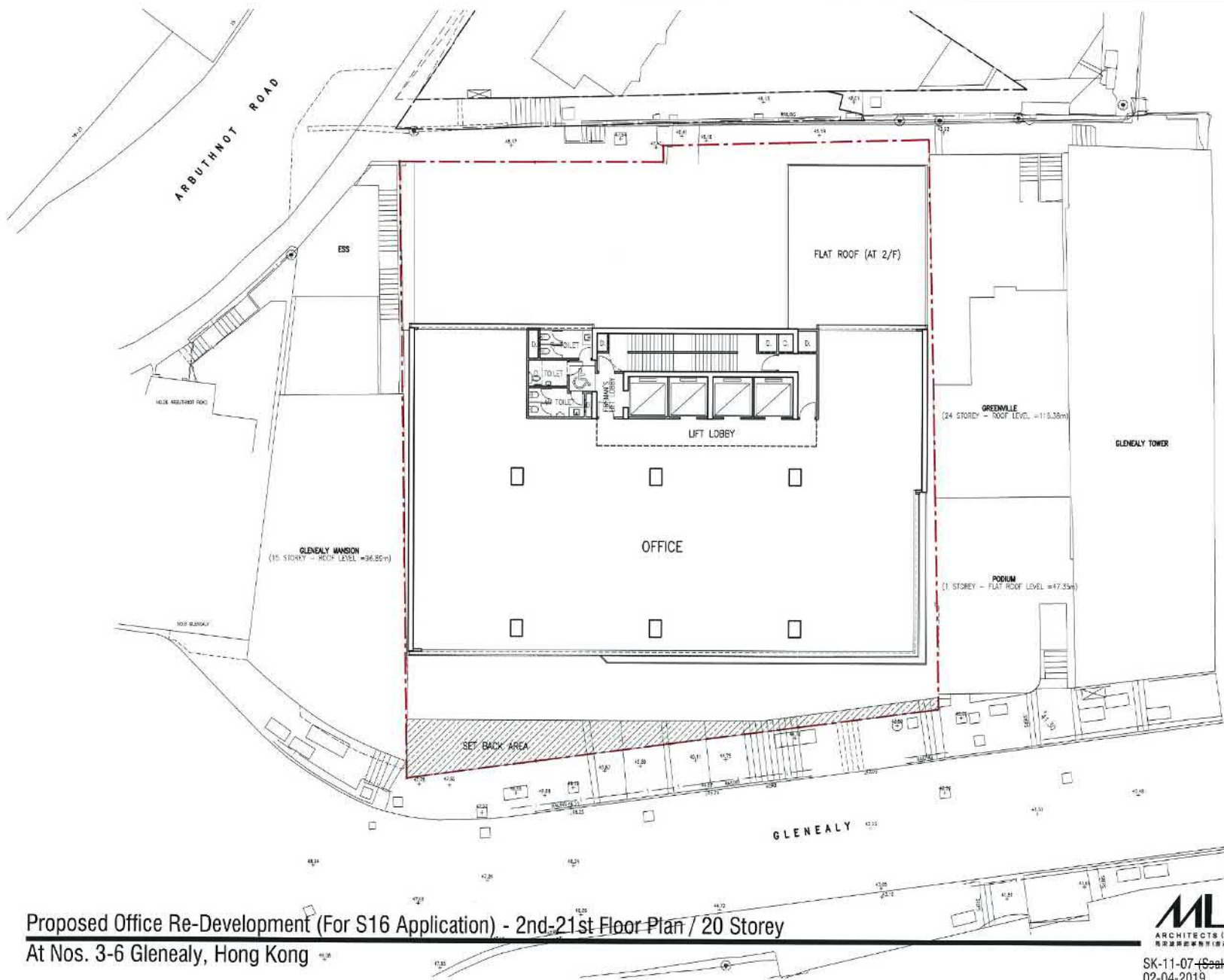


(Scheme B)  
 Proposed Office Re-Development (For S16 Application) - Plan At Level 53.80  
 At Nos. 3-6 Glenealy, Hong Kong

(資料來源：由申請人提供)  
 (SOURCE : SUBMITTED BY THE APPLICANT)

參考編號 REFERENCE No. A/H3/441	繪圖 DRAWING R - 8
-----------------------------------	------------------------





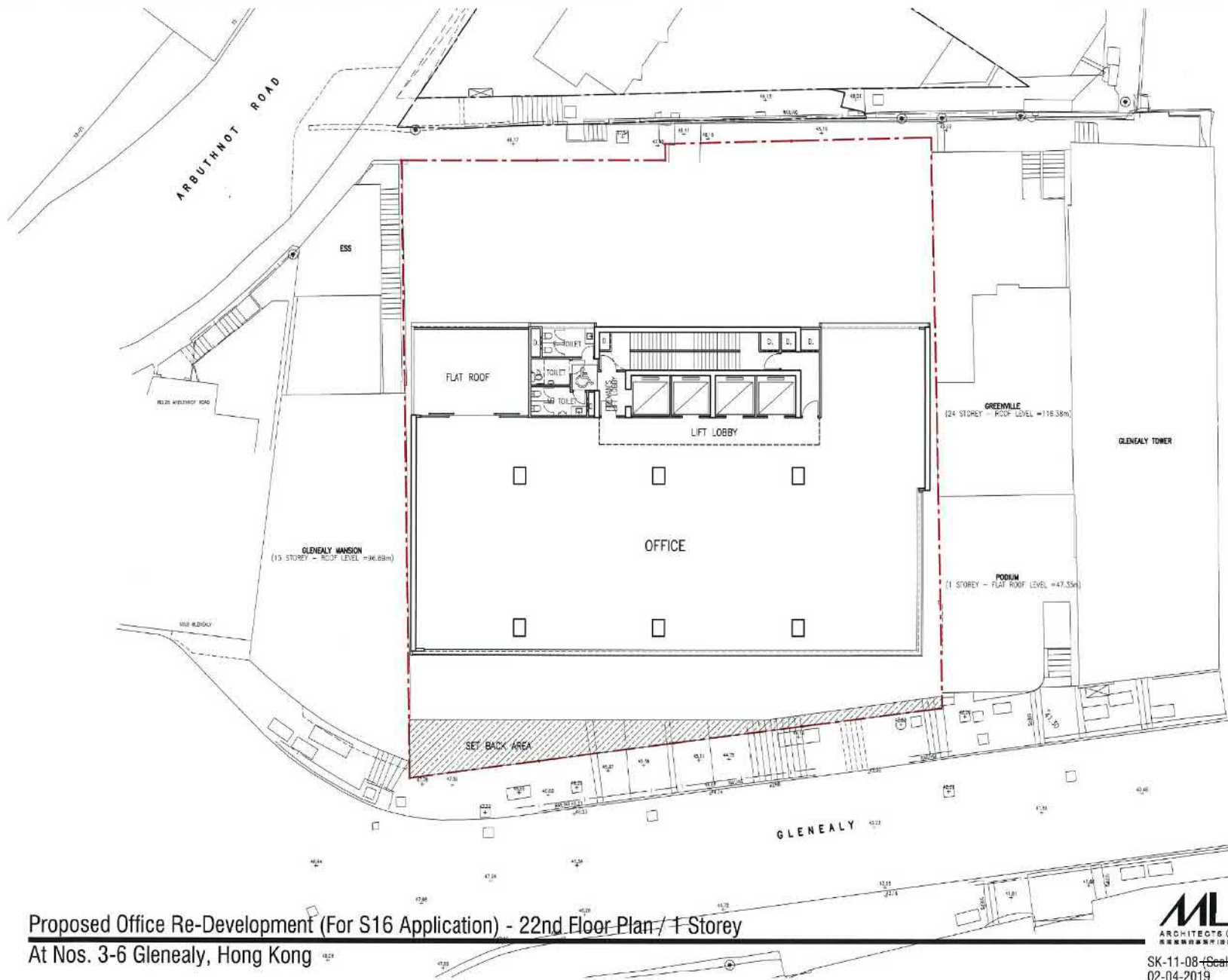
Proposed Office Re-Development (For S16 Application) - 2nd-21st Floor Plan / 20 Storey  
 At Nos. 3-6 Glenealy, Hong Kong

**MLA**  
 ARCHITECTS (HK) LTD  
 馬梁建築師事務所 (香港) 有限公司  
 SK-11-07 (Scale 1:200)  
 02-04-2019

馬梁

(資料來源：由申請人提供)  
 (SOURCE : SUBMITTED BY THE APPLICANT)

參考編號 REFERENCE No. A/H3/441	繪圖 DRAWING R - 9
-----------------------------------	------------------------

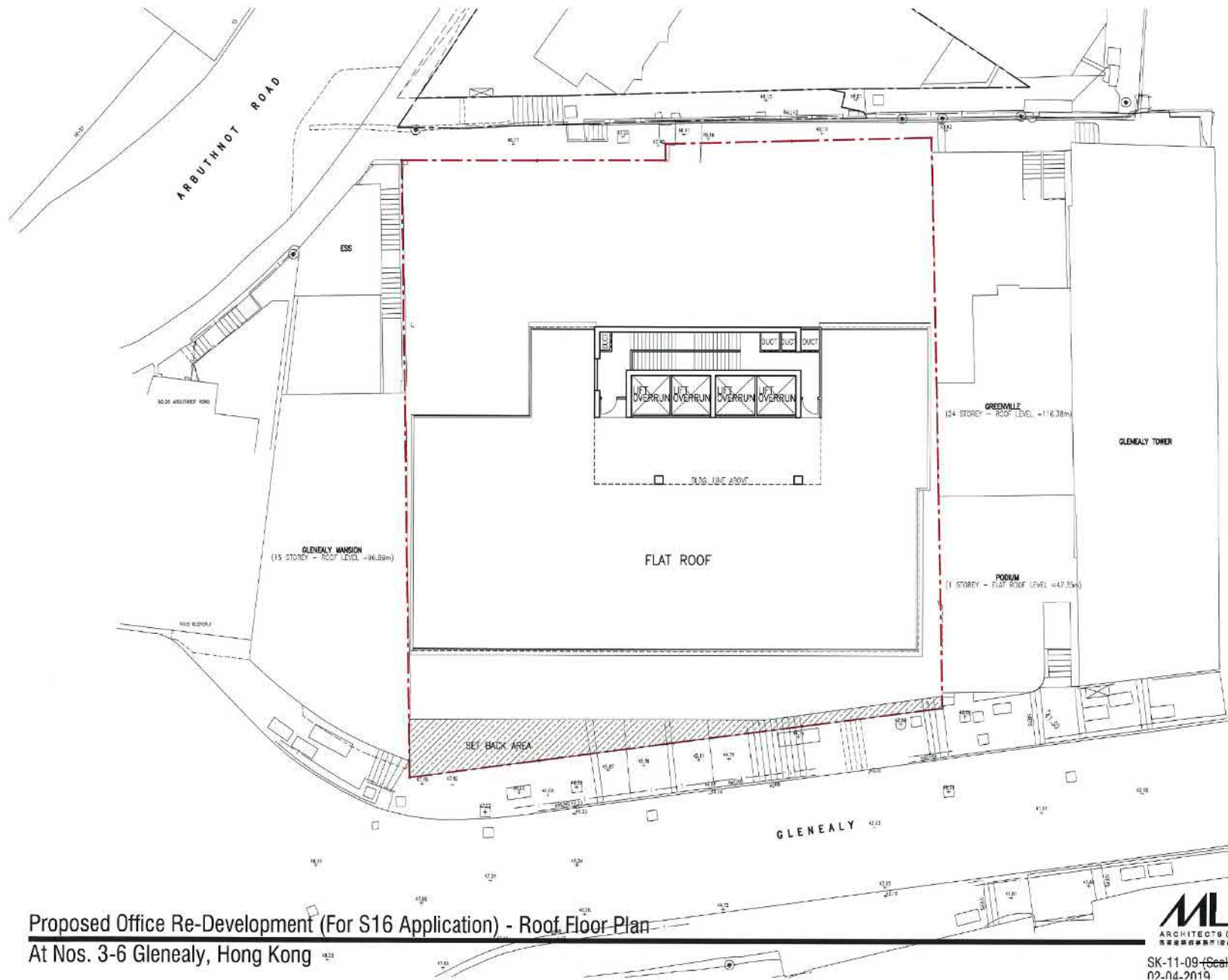


Proposed Office Re-Development (For S16 Application) - 22nd Floor Plan / 1 Storey  
 At Nos. 3-6 Glenealy, Hong Kong

  
 SK-11-08 (Scale 1:200)  
 02-04-2019

(資料來源：由申請人提供)  
 (SOURCE : SUBMITTED BY THE APPLICANT)

參考編號 REFERENCE No. A/H3/441	繪圖 DRAWING R - 10
-----------------------------------	-------------------------

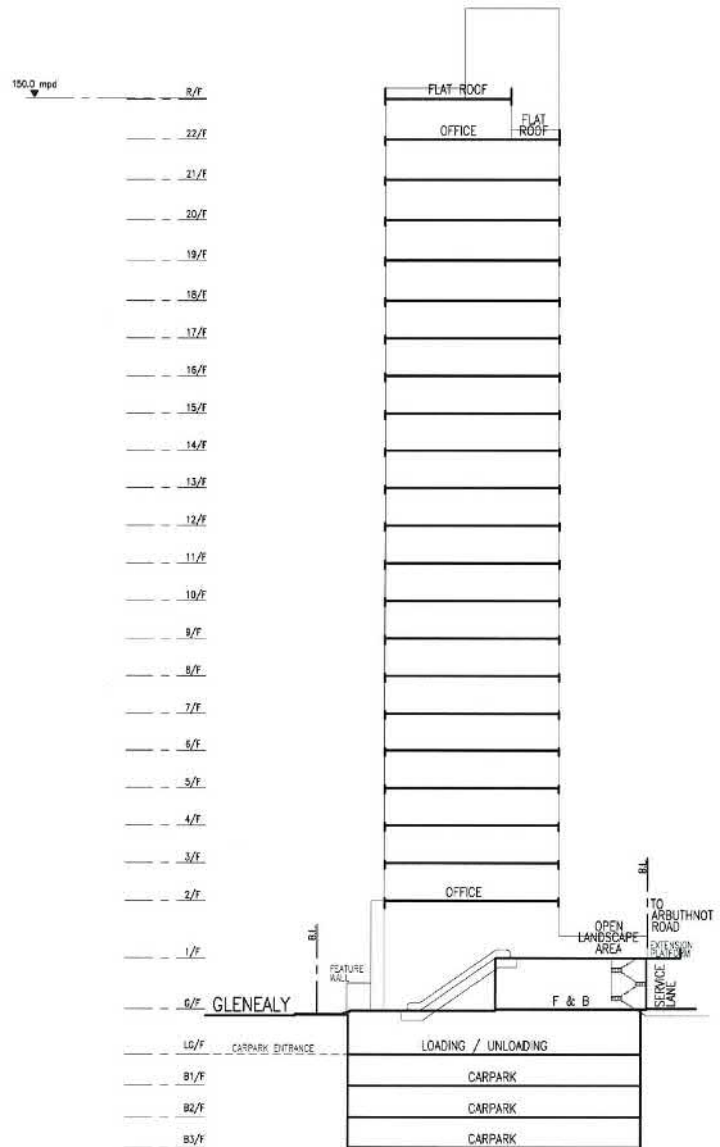


Proposed Office Re-Development (For S16 Application) - Roof Floor Plan  
 At Nos. 3-6 Glenealy, Hong Kong

  
 馬梁  
 SK-11-09 (Scale 1:200)  
 02.04.2019

(資料來源：由申請人提供)  
 (SOURCE : SUBMITTED BY THE APPLICANT)

參考編號 REFERENCE No. <b>A/H3/441</b>	繪圖 DRAWING <b>R - 11</b>
--	--------------------------------



Proposed Office Development (For S16 Application) - Diagrammatic Section  
 At Nos. 3-6 Glenealy, Central, Hong Kong

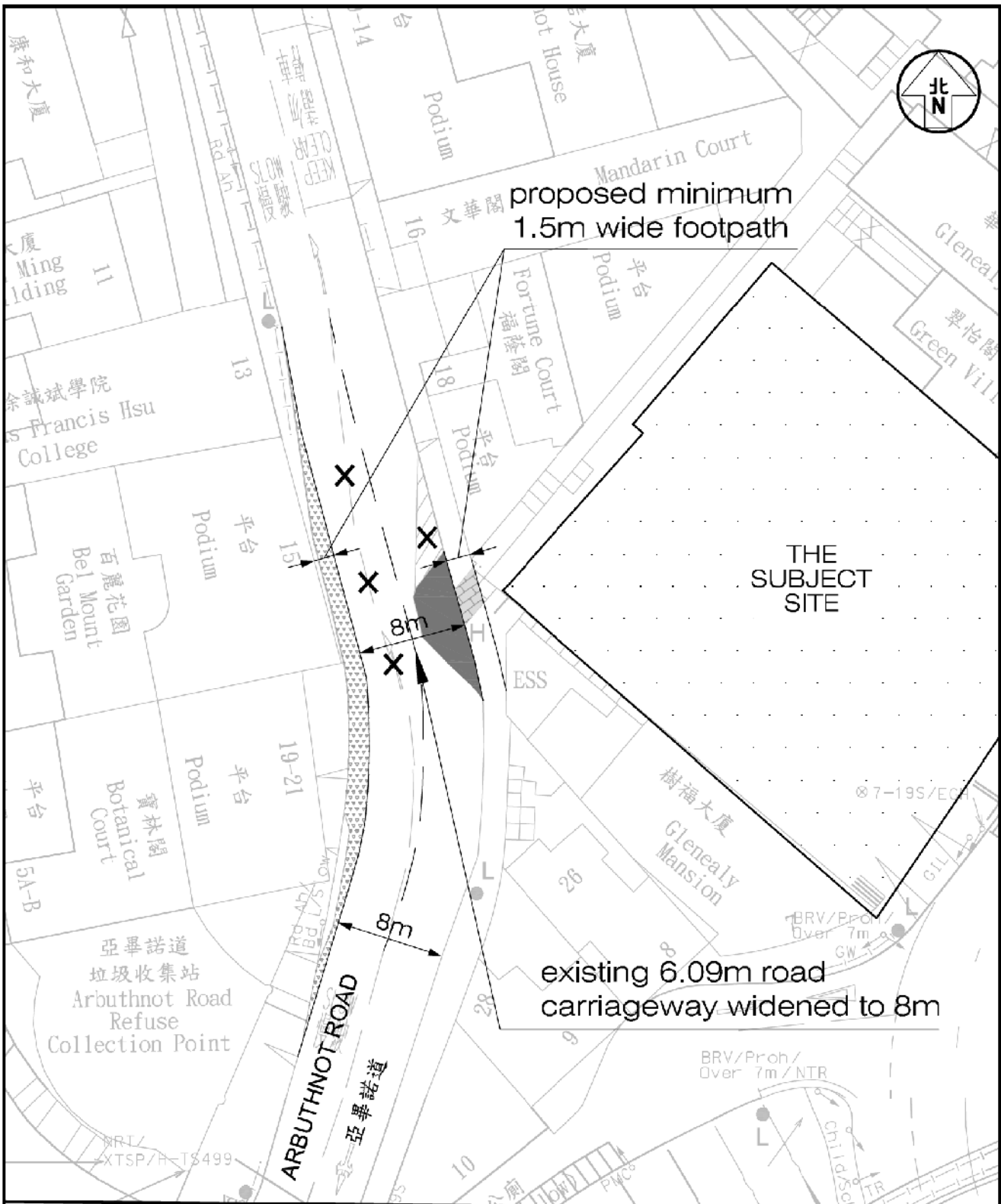


  
 ARCHITECTS (HK) LTD  
 馬梁建築師事務所(香港)有限公司  
 SK-11-10 (Scale 1:500)  
 02-04-2019

(資料來源：由申請人提供)  
 (SOURCE : SUBMITTED BY THE APPLICANT)

參考編號 REFERENCE No. A/H3/441	繪圖 DRAWING R - 12
-----------------------------------	-------------------------





**LEGEND :**

- existing staircase and footpath to be converted to road
- existing staircase to be converted to footpath
- existing road to be converted to footpath

Project Title <b>PROPOSED OFFICE DEVELOPMENT (WITH SHOP AND SERVICES/EATING PLACE ON LOWER FLOORS) AT 3-6 GLENEALY, CENTRAL - TPB REF: A/H3/441 - SECTION 17 REVIEW</b>	Job No. <b>J6938</b>	Figure No. <b>4.1</b>	Scale in A4 <b>1:400</b>
Designed by <b>Y S H</b>	Drawn by <b>N C M</b>	Checked by <b>K C</b>	Revision <b>A</b>
Date <b>03 APR 2020</b>			

Figure Title <b>THE APPLICANT'S TRAFFIC IMPROVEMENT PROPOSAL</b>	<b>CKM Asia Limited</b> Traffic and Transportation Planning Consultants 21st Floor, Methodist House, 36 Hennessy Road, Wan Chai, Hong Kong Tel: (852) 2520 5990 Fax: (852) 2528 6343 Email: mail@ckmasia.com.hk
---	--

參考編號 REFERENCE NO. <b>A/H3/441</b>
--

繪圖 DRAWING <b>R - 13</b>
--------------------------------

(資料來源：由申請人提供)  
(SOURCE : SUBMITTED BY THE APPLICANT)

T:\JOB\J6900-J6949\J6938\Fig 4.1 RevA.dwg



KEY PLAN



Existing Condition



Proposed Development

REVISION 校訂	DESCRIPTION 內容摘要	DRAWN 繪圖	DATE 日期	CHECKED 審核	APPROVED 審批	DO NOT SCALE FROM THIS DRAWING 勿按圖量比例	SCALE 比例	DESIGNED BY 設計	COPYRIGHT RESERVED 保留版權
						PROJECT 主要項目 PROPOSED OFFICE DEVELOPMENT (AND SHOP & SERVICES/EATING PLACE) WITH A PEDESTRIAN ENHANCEMENT SCHEME IN "RESIDENTIAL (GROUP 4)" ZONE AT NOS. 4-6 GLENEALY, CENTRAL	SCALE 比例 N.T.S.	DESIGNED BY 設計 TEL	
						DRAWING TITLE 圖紙名稱 PHOTOMOTAGE 1	DATE 日期 MAR 2020	DRAWN 繪圖 CAD	
							REVISION 校訂	CHECKED 審核 TEL	
							DRAWING NUMBER 圖號 PM01	APPROVED 審批 TEL	
						LANDIS LIMITED 建築師事務所 LANDSCAPE PLANNING, DESIGN AND CONSTRUCTION 景觀規劃設計、建築師 UNIT A, 10/F, SHAN FONG COMMERICAL BUILDING, 5 - 11 TANGKUN ROAD, WAI CHAI, HONG KONG 香港新界沙田區沙田圍唐君堂街5-11號新豐商業大廈A座10樓 TELEPHONE 2668 4888 FAX 2668 2022 電話:(852) 2668 4888 傳真:(852) 2668 2022		LanDes	
									CAD FILENAME : C2021-PM01

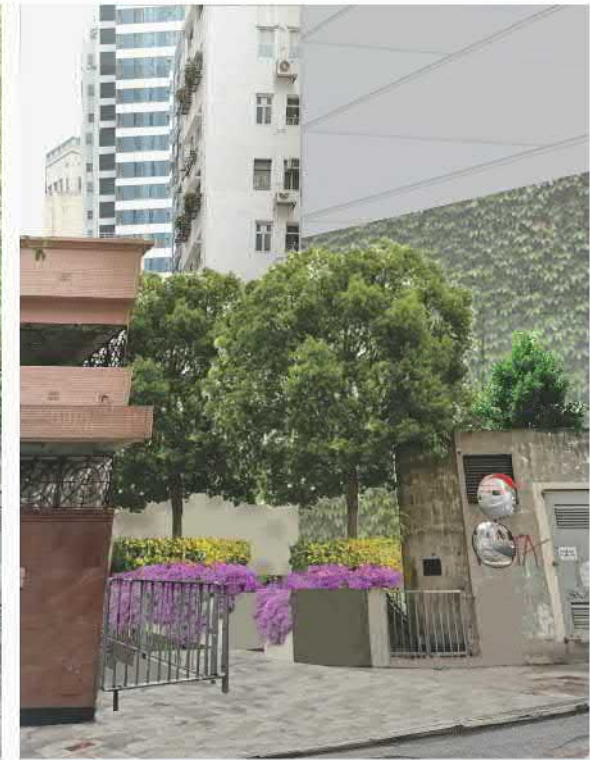
參考編號 REFERENCE No. A/H3/441	繪圖 DRAWING R - 14
-----------------------------------	-------------------------



**KEY PLAN**



**Existing Condition**



**Proposed Development**

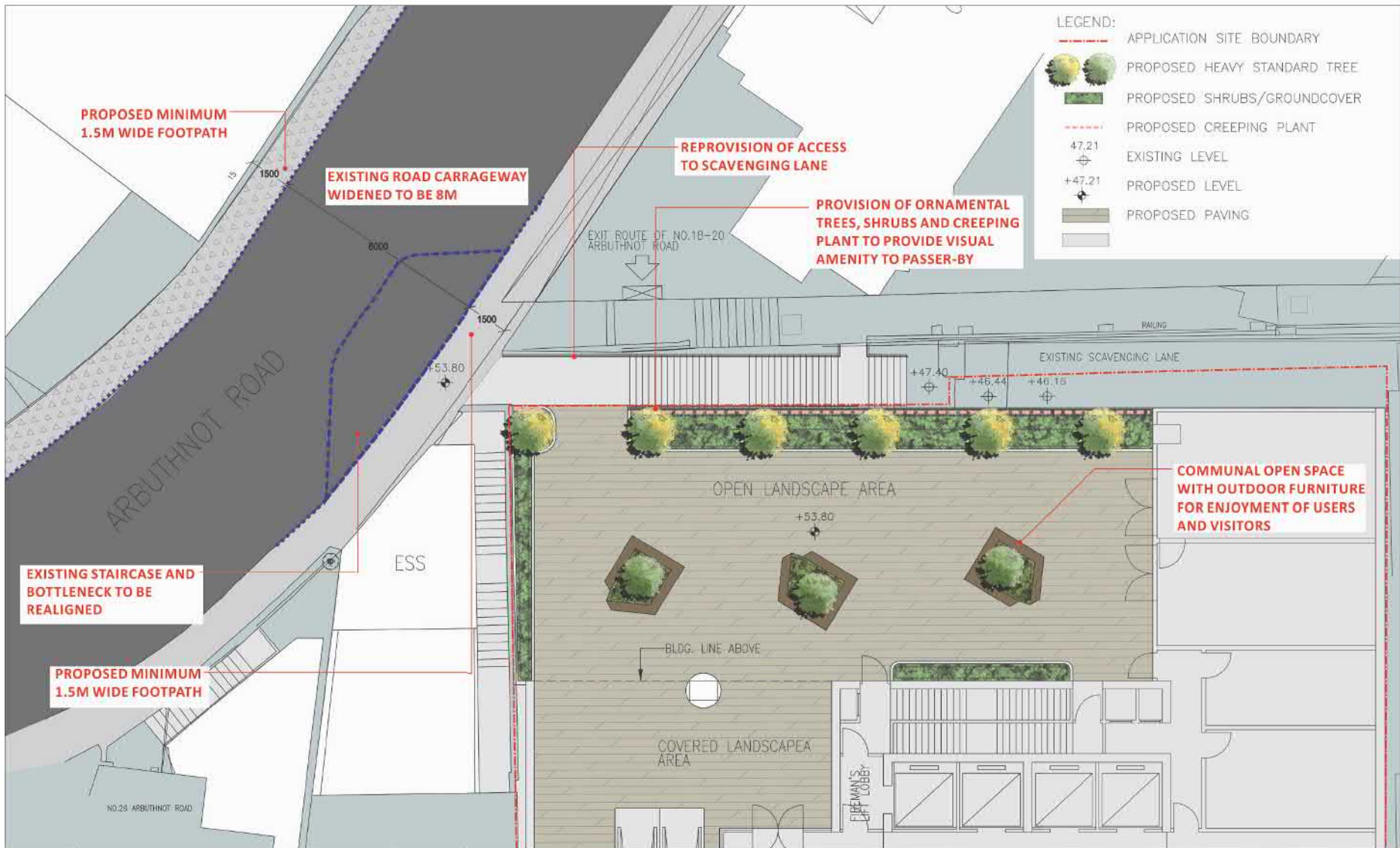
REVISION 校訂	DESCRIPTION 內容摘要	DRAWN 繪圖	DATE 日期	CHECKED 審核	APPROVED 審批	DO NOT SCALE FROM THIS DRAWING 勿按圖量比例	SCALE 比例	DESIGNED 設計	COPYRIGHT RESERVED 版權保留
						PROJECT 工程項目 PROPOSED OFFICE DEVELOPMENT (AND SHOP & SERVICES/EATING PLACE) WITH A PEDESTRIAN ENHANCEMENT SCHEME IN "RESIDENTIAL (GROUP A)" ZONE AT NOS. 1-5 GLEANEALY, CENTRAL	N.T.S. DATE 日期 MAR 2020	TEL DRAWN 繪圖 CAD CHECKED 審核 TEL APPROVED 審批 TEL	<b>LanDes</b>
						DRAWING TITLE 圖紙名稱 PHOTOMOTAGE 2	REVISION 校訂 DRAWING NUMBER 圖號 PM02		
						<small>           LINDSAY ANG 鄧麗欣            LANDSCAPE PLANNING DESIGN AND CONSTRUCTION 園林景觀設計及建造            F/A 117 SHAN KWEI COMMERCIAL BUILDING, 1-11 THARGO ROAD, WAI CHAI HOA HOI 德輔道中117號山葵商業大廈1-11樓            TEL: (852) 2516 0510 FAX: (852) 2516 2810 傳真: (852) 2516 2810 傳呼: (852) 2516 2810         </small>			CAD FILENAME : C2021-PM02

參考編號 REFERENCE No. A/H3/441	繪圖 DRAWING R - 15
-----------------------------------	-------------------------









REVISION 校訂	DESCRIPTION 內容變更	DRAWN 繪圖	DATE 日期	CHECKED 審核	APPROVED 審批

DO NOT SCALE FROM THIS DRAWING 勿按圖量比例

PROJECT 工程項目  
 PROPOSED OFFICE DEVELOPMENT (AND SHOP & SERVICES/EATING PLACE) WITH A PEDESTRIAN ENHANCEMENT SCHEME IN "RESIDENTIAL (GROUP A)" ZONE AT NOS. 1-6 GLEANEALY, CENTRAL

DRAWING TITLE 圖紙名稱  
 LANDSCAPE PLAN - 1/F (SCHEME A)

SCALE 比例  
 1:100

DATE 日期  
 MAR 2020

DESIGNED 設計  
 TEL

DRAWN 繪圖  
 CAD

CHECKED 審核  
 TEL

APPROVED 審批  
 TEL

DRAWING NUMBER 圖號  
 LMP01

DESIGNED 設計  
 TEL

DRAWN 繪圖  
 CAD

CHECKED 審核  
 TEL

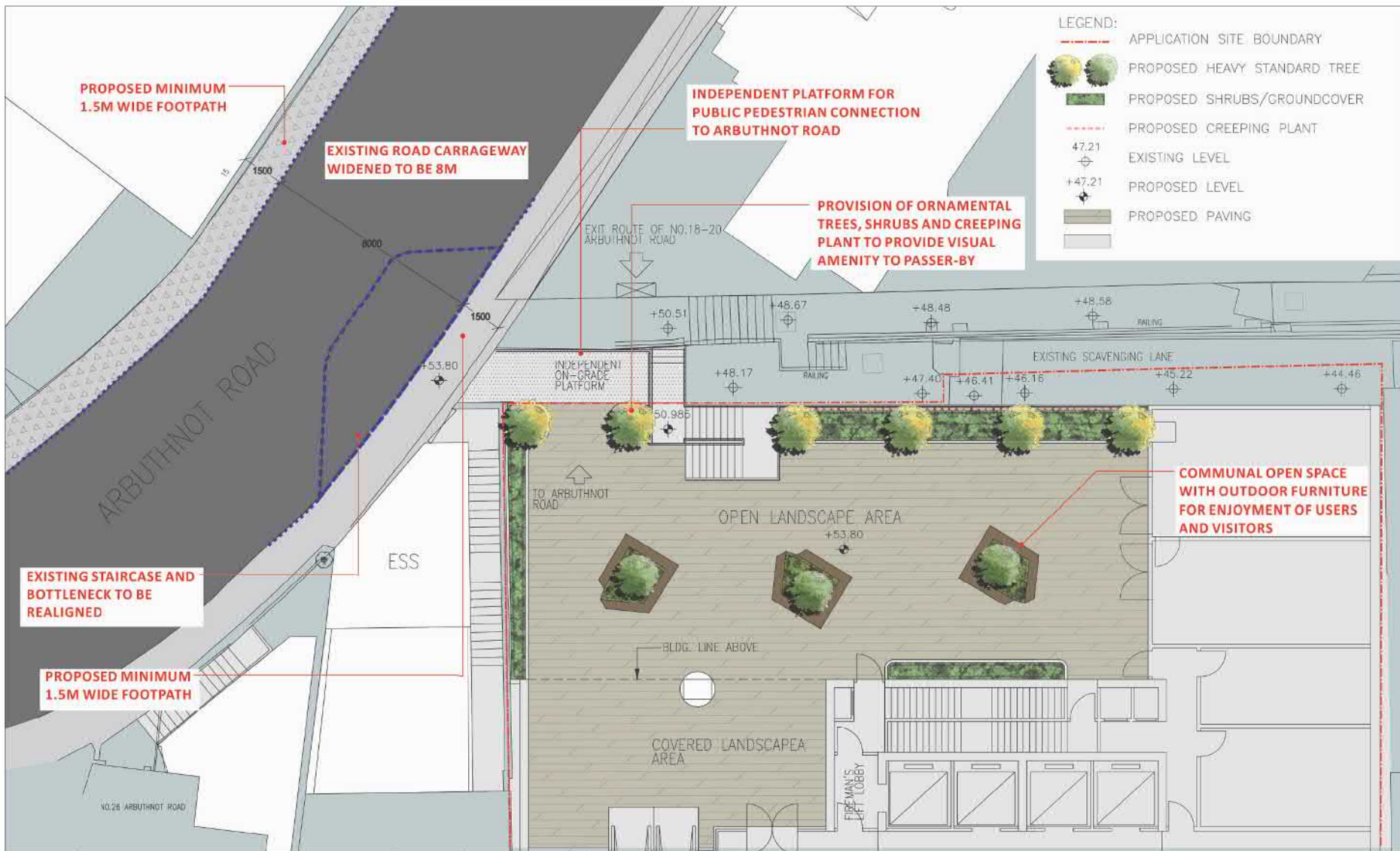
APPROVED 審批  
 TEL

LANDSCAPE PLANNING DESIGN AND CONSTRUCTION  
 景觀規劃設計及建造有限公司  
 UNIT A, 107, SHAN FONG COMMERCIAL BUILDING, 5-11 THUNDER ROAD, WAH CHAI, HONG KONG  
 電話: (852) 2777 8888 傳真: (852) 2777 8888

CAD FILENAME: C2021-LMP01

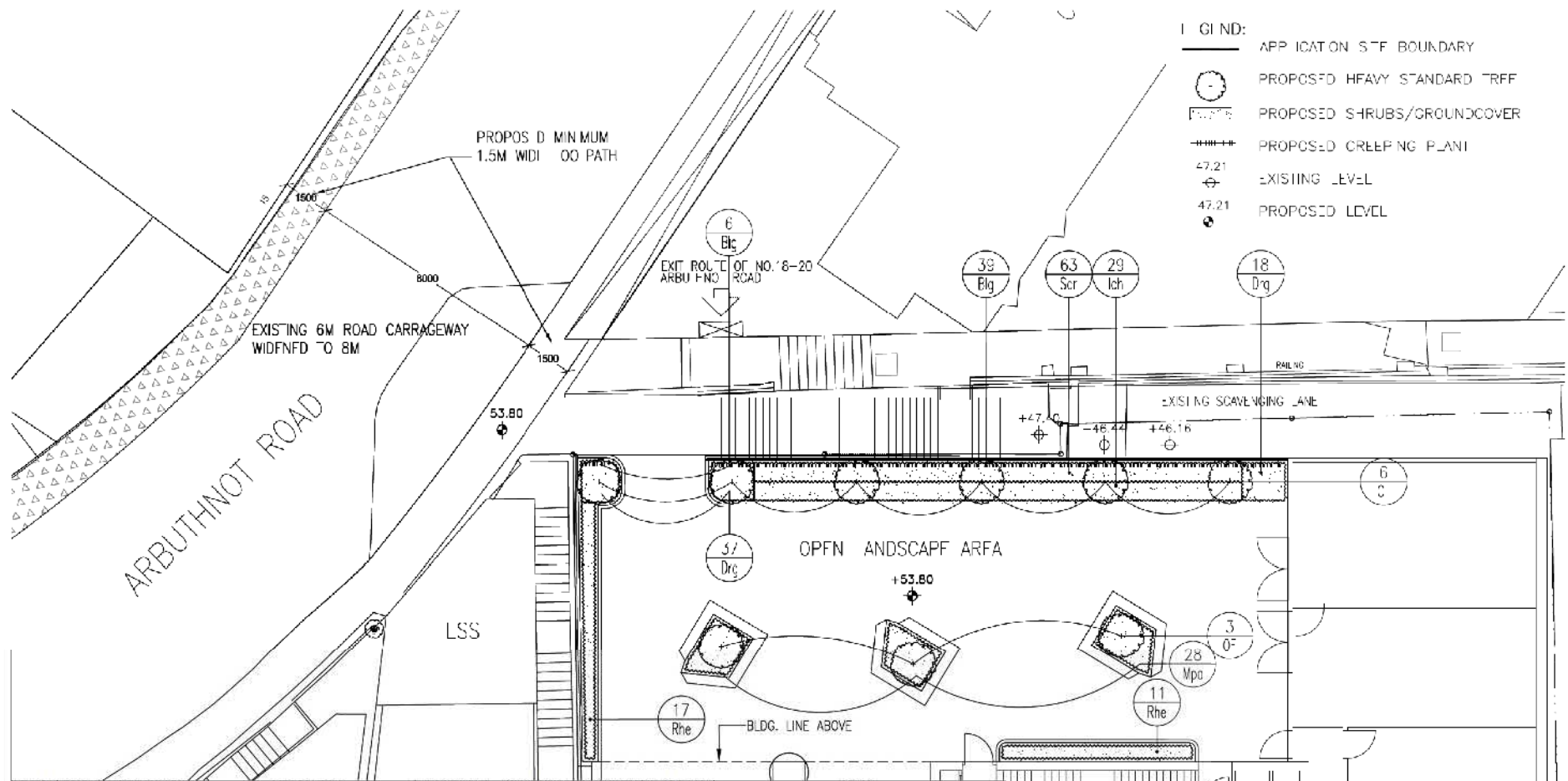
參考編號  
 REFERENCE No.  
 A/H3/441

繪圖  
 DRAWING  
 R - 17



REVISION 校註	DESCRIPTION 內容編號	DRAWN 繪圖	DATE 日期	CHECKED 審核	APPROVED 審批	DO NOT SCALE FROM THIS DRAWING 勿按圖量比例	SCALE 比例	DESIGNED 設計	COPYRIGHT RESERVED 版權保留
						PROJECT 工程項目 PROPOSED OFFICE DEVELOPMENT (AND SHOP & SERVICES/EATING PLACE) WITH A PEDESTRIAN ENHANCEMENT SCHEME IN 'RESIDENTIAL (GROUP A)' ZONE AT NOS. 18-20 GLENEARY, CENTRAL	DATE 日期 MAR 2020	DRAWN 繪圖 TEL	
						DRAWING TITLE 圖紙名稱 LANDSCAPE PLAN - 1/F (SCHEME B)	REVISION 校註	CHECKED 審核 TEL	
						DRAWING NUMBER 圖號 LMP02		APPROVED 審批 TEL	
						LANDES LIMITED 蘭地設計有限公司 LANDSCAPE PLANNING, DESIGN AND CONSTRUCTION 景觀規劃/設計/工程/建造 UNIT A, 107, SHAN FONG COMMERCIAL BUILDING, 5 - 11 THUNDER ROAD, NA OMI, HONG KONG 香港新界葵涌葵興道107號A室			
						TEL: (852) 2462 2888 FAX: (852) 2462 2888			
						CAD FILENAME: C2021-LMP02			

參考編號 REFERENCE No. A/H3/441	繪圖 DRAWING R - 18
-----------------------------------	-------------------------



Quantity	Code	Chinese Name	Botanical Name	Height (mm)	Spread (mm)	DBH (mm)	Spacing (mm)	Remark
<b>HEAVY STANDARD TREES</b>								
6	CT	銀葉魚木	<i>Crotona foliolata</i>	4000	1500	75	4000	Abundance of Foliage, Well-Formed, Full Spread Formed
3	OF	桂花	<i>Osmanthus fragrans</i>	3500	1500	75	4000	Abundance of Foliage, Well-Formed, Full Spread Formed
<b>SHRUBS</b>								
73	Drg	黃金金銀花	<i>Duranta repens 'Golden'</i>	300	250	-	250	-
29	lch	藍銀花	<i>Noya chinensis</i>	500	450	-	300	-
28	Mpa	九里香	<i>Murraya paniculata</i>	550	500	-	450	-
63	Sar	簕欓藤	<i>Scheffera arboricola</i>	450	300	-	250	-
28	Rhe	榕竹	<i>Rhaps excelsa</i>	900	450	-	400	at least 6 shoots
<b>CREEPING PLANT</b>								
45	Bgj	勒杜蘭	<i>Bougainvillea glabra</i>	600	300	-	500	-

REVISION 校訂	DESCRIPTION 內容與安	DRAWN 繪圖	DATE 日期	CHECKED 審核	APPROVED 審批

DO NOT SCALE FROM THIS DRAWING 勿按圖量比例

PROJECT 工程項目  
 PROPOSED OFFICE DEVELOPMENT (AND SHOP & SERVICES/EATING PLACE) WITH A PEDESTRIAN ENHANCEMENT SCHEME IN 'RESIDENTIAL (GROUP A)' ZONE AT NOS. 1-6 GLEANEALY, CENTRAL.

DRAWING TITLE 圖紙名稱  
 PLANTING PLAN - 1/F (SCHEME A)

SCALE 比例  
 1:125

DATE 日期  
 MAR 2020

REVISION 校訂  
 -

DRAWING NUMBER 圖號  
 PT01

DESIGNED 設計  
 T.E.

DRAWN 繪圖  
 CAD

CHECKED 審核  
 T

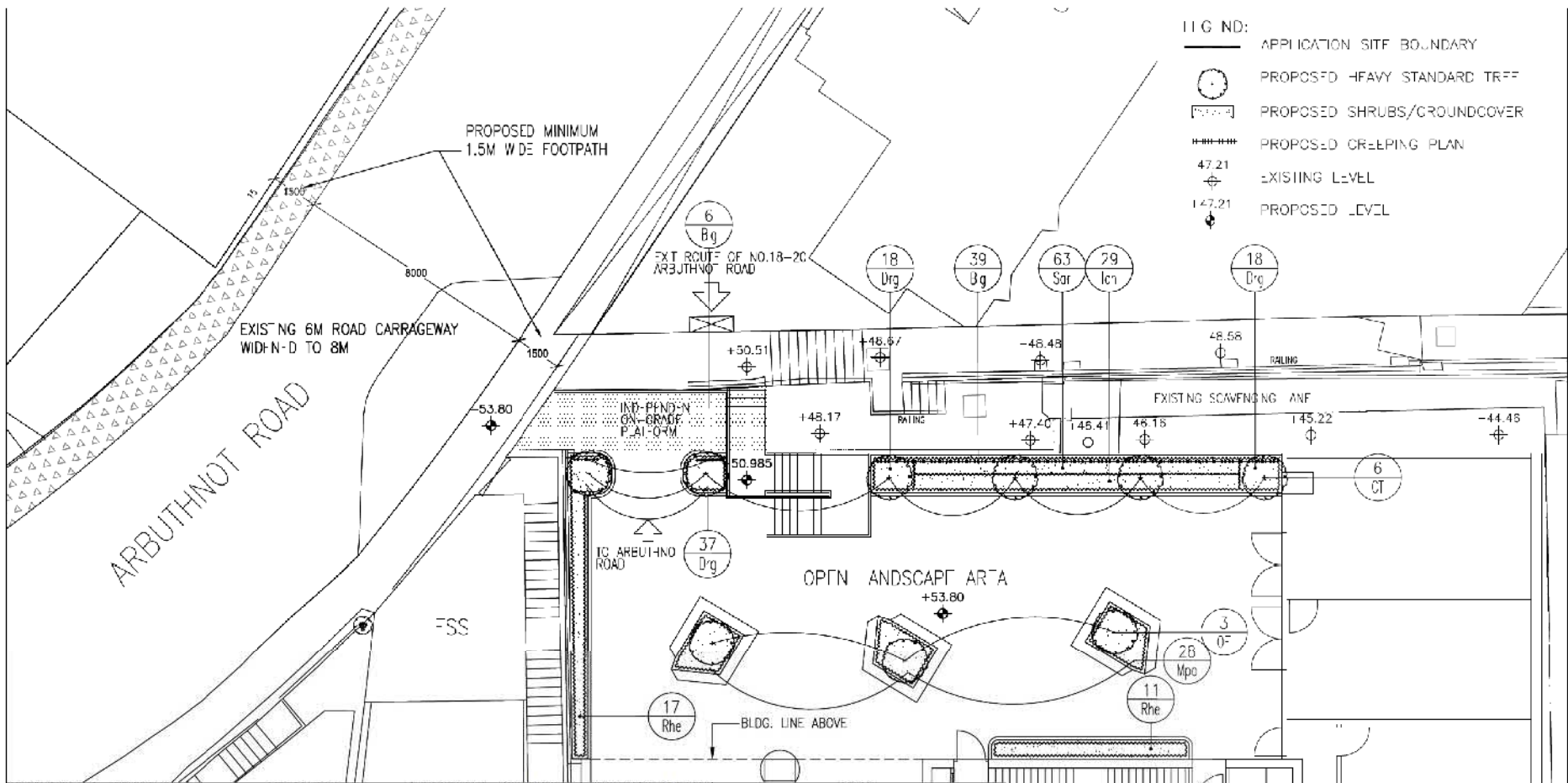
APPROVED 審批  
 T

LANDIS LIMITED 園藝有限公司  
 LANDSCAPE PLANNING, DESIGN AND CONSTRUCTION 園藝規劃、設計及建造  
 UNIT A, 107A, 107B, 107C, 107D, 107E, 107F, 107G, 107H, 107I, 107J, 107K, 107L, 107M, 107N, 107O, 107P, 107Q, 107R, 107S, 107T, 107U, 107V, 107W, 107X, 107Y, 107Z, 107AA, 107AB, 107AC, 107AD, 107AE, 107AF, 107AG, 107AH, 107AI, 107AJ, 107AK, 107AL, 107AM, 107AN, 107AO, 107AP, 107AQ, 107AR, 107AS, 107AT, 107AU, 107AV, 107AW, 107AX, 107AY, 107AZ, 107BA, 107BB, 107BC, 107BD, 107BE, 107BF, 107BG, 107BH, 107BI, 107BJ, 107BK, 107BL, 107BM, 107BN, 107BO, 107BP, 107BQ, 107BR, 107BS, 107BT, 107BU, 107BV, 107BW, 107BX, 107BY, 107BZ, 107CA, 107CB, 107CC, 107CD, 107CE, 107CF, 107CG, 107CH, 107CI, 107CJ, 107CK, 107CL, 107CM, 107CN, 107CO, 107CP, 107CQ, 107CR, 107CS, 107CT, 107CU, 107CV, 107CW, 107CX, 107CY, 107CZ, 107DA, 107DB, 107DC, 107DD, 107DE, 107DF, 107DG, 107DH, 107DI, 107DJ, 107DK, 107DL, 107DM, 107DN, 107DO, 107DP, 107DQ, 107DR, 107DS, 107DT, 107DU, 107DV, 107DW, 107DX, 107DY, 107DZ, 107EA, 107EB, 107EC, 107ED, 107EE, 107EF, 107EG, 107EH, 107EI, 107EJ, 107EK, 107EL, 107EM, 107EN, 107EO, 107EP, 107EQ, 107ER, 107ES, 107ET, 107EU, 107EV, 107EW, 107EX, 107EY, 107EZ, 107FA, 107FB, 107FC, 107FD, 107FE, 107FF, 107FG, 107FH, 107FI, 107FJ, 107FK, 107FL, 107FM, 107FN, 107FO, 107FP, 107FQ, 107FR, 107FS, 107FT, 107FU, 107FV, 107FW, 107FX, 107FY, 107FZ, 107GA, 107GB, 107GC, 107GD, 107GE, 107GF, 107GG, 107GH, 107GI, 107GJ, 107GK, 107GL, 107GM, 107GN, 107GO, 107GP, 107GQ, 107GR, 107GS, 107GT, 107GU, 107GV, 107GW, 107GX, 107GY, 107GZ, 107HA, 107HB, 107HC, 107HD, 107HE, 107HF, 107HG, 107HH, 107HI, 107HJ, 107HK, 107HL, 107HM, 107HN, 107HO, 107HP, 107HQ, 107HR, 107HS, 107HT, 107HU, 107HV, 107HW, 107HX, 107HY, 107HZ, 107IA, 107IB, 107IC, 107ID, 107IE, 107IF, 107IG, 107IH, 107II, 107IJ, 107IK, 107IL, 107IM, 107IN, 107IO, 107IP, 107IQ, 107IR, 107IS, 107IT, 107IU, 107IV, 107IW, 107IX, 107IY, 107IZ, 107JA, 107JB, 107JC, 107JD, 107JE, 107JF, 107JG, 107JH, 107JI, 107JJ, 107JK, 107JL, 107JM, 107JN, 107JO, 107JP, 107JQ, 107JR, 107JS, 107JT, 107JU, 107JV, 107JW, 107JX, 107JY, 107JZ, 107KA, 107KB, 107KC, 107KD, 107KE, 107KF, 107KG, 107KH, 107KI, 107KJ, 107KK, 107KL, 107KM, 107KN, 107KO, 107KP, 107KQ, 107KR, 107KS, 107KT, 107KU, 107KV, 107KW, 107KX, 107KY, 107KZ, 107LA, 107LB, 107LC, 107LD, 107LE, 107LF, 107LG, 107LH, 107LI, 107LJ, 107LK, 107LL, 107LM, 107LN, 107LO, 107LP, 107LQ, 107LR, 107LS, 107LT, 107LU, 107LV, 107LW, 107LX, 107LY, 107LZ, 107MA, 107MB, 107MC, 107MD, 107ME, 107MF, 107MG, 107MH, 107MI, 107MJ, 107MK, 107ML, 107MN, 107MO, 107MP, 107MQ, 107MR, 107MS, 107MT, 107MU, 107MV, 107MW, 107MX, 107MY, 107MZ, 107NA, 107NB, 107NC, 107ND, 107NE, 107NF, 107NG, 107NH, 107NI, 107NJ, 107NK, 107NL, 107NM, 107NO, 107NP, 107NQ, 107NR, 107NS, 107NT, 107NU, 107NV, 107NW, 107NX, 107NY, 107NZ, 107OA, 107OB, 107OC, 107OD, 107OE, 107OF, 107OG, 107OH, 107OI, 107OJ, 107OK, 107OL, 107OM, 107ON, 107OO, 107OP, 107OQ, 107OR, 107OS, 107OT, 107OU, 107OV, 107OW, 107OX, 107OY, 107OZ, 107PA, 107PB, 107PC, 107PD, 107PE, 107PF, 107PG, 107PH, 107PI, 107PJ, 107PK, 107PL, 107PM, 107PN, 107PO, 107PP, 107PQ, 107PR, 107PS, 107PT, 107PU, 107PV, 107PW, 107PX, 107PY, 107PZ, 107QA, 107QB, 107QC, 107QD, 107QE, 107QF, 107QG, 107QH, 107QI, 107QJ, 107QK, 107QL, 107QM, 107QN, 107QO, 107QP, 107QQ, 107QR, 107QS, 107QT, 107QU, 107QV, 107QW, 107QX, 107QY, 107QZ, 107RA, 107RB, 107RC, 107RD, 107RE, 107RF, 107RG, 107RH, 107RI, 107RJ, 107RK, 107RL, 107RM, 107RN, 107RO, 107RP, 107RQ, 107RR, 107RS, 107RT, 107RU, 107RV, 107RW, 107RX, 107RY, 107RZ, 107SA, 107SB, 107SC, 107SD, 107SE, 107SF, 107SG, 107SH, 107SI, 107SJ, 107SK, 107SL, 107SM, 107SN, 107SO, 107SP, 107SQ, 107SR, 107SS, 107ST, 107SU, 107SV, 107SW, 107SX, 107SY, 107SZ, 107TA, 107TB, 107TC, 107TD, 107TE, 107TF, 107TG, 107TH, 107TI, 107TJ, 107TK, 107TL, 107TM, 107TN, 107TO, 107TP, 107TQ, 107TR, 107TS, 107TT, 107TU, 107TV, 107TW, 107TX, 107TY, 107TZ, 107UA, 107UB, 107UC, 107UD, 107UE, 107UF, 107UG, 107UH, 107UI, 107UJ, 107UK, 107UL, 107UM, 107UN, 107UO, 107UP, 107UQ, 107UR, 107US, 107UT, 107UU, 107UV, 107UW, 107UX, 107UY, 107UZ, 107VA, 107VB, 107VC, 107VD, 107VE, 107VF, 107VG, 107VH, 107VI, 107VJ, 107VK, 107VL, 107VM, 107VN, 107VO, 107VP, 107VQ, 107VR, 107VS, 107VT, 107VU, 107VV, 107VW, 107VX, 107VY, 107VZ, 107WA, 107WB, 107WC, 107WD, 107WE, 107WF, 107WG, 107WH, 107WI, 107WJ, 107WK, 107WL, 107WM, 107WN, 107WO, 107WP, 107WQ, 107WR, 107WS, 107WT, 107WU, 107WV, 107WW, 107WX, 107WY, 107WZ, 107XA, 107XB, 107XC, 107XD, 107XE, 107XF, 107XG, 107XH, 107XI, 107XJ, 107XK, 107XL, 107XM, 107XN, 107XO, 107XP, 107XQ, 107XR, 107XS, 107XT, 107XU, 107XV, 107XW, 107XX, 107XY, 107XZ, 107YA, 107YB, 107YC, 107YD, 107YE, 107YF, 107YG, 107YH, 107YI, 107YJ, 107YK, 107YL, 107YM, 107YN, 107YO, 107YP, 107YQ, 107YR, 107YS, 107YT, 107YU, 107YV, 107YW, 107YX, 107YY, 107YZ, 107ZA, 107ZB, 107ZC, 107ZD, 107ZE, 107ZF, 107ZG, 107ZH, 107ZI, 107ZJ, 107ZK, 107ZL, 107ZM, 107ZN, 107ZO, 107ZP, 107ZQ, 107ZR, 107ZS, 107ZT, 107ZU, 107ZV, 107ZW, 107ZX, 107ZY, 107ZZ

LANDIS LIMITED 園藝有限公司  
 LANDSCAPE PLANNING, DESIGN AND CONSTRUCTION 園藝規劃、設計及建造  
 UNIT A, 107A, 107B, 107C, 107D, 107E, 107F, 107G, 107H, 107I, 107J, 107K, 107L, 107M, 107N, 107O, 107P, 107Q, 107R, 107S, 107T, 107U, 107V, 107W, 107X, 107Y, 107Z, 107AA, 107AB, 107AC, 107AD, 107AE, 107AF, 107AG, 107AH, 107AI, 107AJ, 107AK, 107AL, 107AM, 107AN, 107AO, 107AP, 107AQ, 107AR, 107AS, 107AT, 107AU, 107AV, 107AW, 107AX, 107AY, 107AZ, 107BA, 107BB, 107BC, 107BD, 107BE, 107BF, 107BG, 107BH, 107BI, 107BJ, 107BK, 107BL, 107BM, 107BN, 107BO, 107BP, 107BQ, 107BR, 107BS, 107BT, 107BU, 107BV, 107BW, 107BX, 107BY, 107BZ, 107CA, 107CB, 107CC, 107CD, 107CE, 107CF, 107CG, 107CH, 107CI, 107CJ, 107CK, 107CL, 107CM, 107CN, 107CO, 107CP, 107CQ, 107CR, 107CS, 107CT, 107CU, 107CV, 107CW, 107CX, 107CY, 107CZ, 107DA, 107DB, 107DC, 107DD, 107DE, 107DF, 107DG, 107DH, 107DI, 107DJ, 107DK, 107DL, 107DM, 107DN, 107DO, 107DP, 107DQ, 107DR, 107DS, 107DT, 107DU, 107DV, 107DW, 107DX, 107DY, 107DZ, 107EA, 107EB, 107EC, 107ED, 107EE, 107EF, 107EG, 107EH, 107EI, 107EJ, 107EK, 107EL, 107EM, 107EN, 107EO, 107EP, 107EQ, 107ER, 107ES, 107ET, 107EU, 107EV, 107EW, 107EX, 107EY, 107EZ, 107FA, 107FB, 107FC, 107FD, 107FE, 107FF, 107FG, 107FH, 107FI, 107FJ, 107FK, 107FL, 107FM, 107FN, 107FO, 107FP, 107FQ, 107FR, 107FS, 107FT, 107FU, 107FV, 107FW, 107FX, 107FY, 107FZ, 107GA, 107GB, 107GC, 107GD, 107GE, 107GF, 107GG, 107GH, 107GI, 107GJ, 107GK, 107GL, 107GM, 107GN, 107GO, 107GP, 107GQ, 107GR, 107GS, 107GT, 107GU, 107GV, 107GW, 107GX, 107GY, 107GZ, 107HA, 107HB, 107HC, 107HD, 107HE, 107HF, 107HG, 107HH, 107HI, 107HJ, 107HK, 107HL, 107HM, 107HN, 107HO, 107HP, 107HQ, 107HR, 107HS, 107HT, 107HU, 107HV, 107HW, 107HX, 107HY, 107HZ, 107IA, 107IB, 107IC, 107ID, 107IE, 107IF, 107IG, 107IH, 107II, 107IJ, 107IK, 107IL, 107IM, 107IN, 107IO, 107IP, 107IQ, 107IR, 107IS, 107IT, 107IU, 107IV, 107IW, 107IX, 107IY, 107IZ, 107JA, 107JB, 107JC, 107JD, 107JE, 107JF, 107JG, 107JH, 107JI, 107JJ, 107JK, 107JL, 107JM, 107JN, 107JO, 107JP, 107JQ, 107JR, 107JS, 107JT, 107JU, 107JV, 107JW, 107JX, 107JY, 107JZ, 107KA, 107KB, 107KC, 107KD, 107KE, 107KF, 107KG, 107KH, 107KI, 107KJ, 107KL, 107KM, 107KN, 107KO, 107KP, 107KQ, 107KR, 107KS, 107KT, 107KU, 107KV, 107KW, 107KX, 107KY, 107KZ, 107LA, 107LB, 107LC, 107LD, 107LE, 107LF, 107LG, 107LH, 107LI, 107LJ, 107LK, 107LM, 107LN, 107LO, 107LP, 107LQ, 107LR, 107LS, 107LT, 107LU, 107LV, 107LW, 107LX, 107LY, 107LZ, 107MA, 107MB, 107MC, 107MD, 107ME, 107MF, 107MG, 107MH, 107MI, 107MJ, 107MK, 107ML, 107MN, 107MO, 107MP, 107MQ, 107MR, 107MS, 107MT, 107MU, 107MV, 107MW, 107MX, 107MY, 107MZ, 107NA, 107NB, 107NC, 107ND, 107NE, 107NF, 107NG, 107NH, 107NI, 107NJ, 107NK, 107NL, 107NM, 107NO, 107NP, 107NQ, 107NR, 107NS, 107NT, 107NU, 107NV, 107NW, 107NX, 107NY, 107NZ, 107OA, 107OB, 107OC, 107OD, 107OE, 107OF, 107OG, 107OH, 107OI, 107OJ, 107OK, 107OL, 107OM, 107ON, 107OO, 107OP, 107OQ, 107OR, 107OS, 107OT, 107OU, 107OV, 107OW, 107OX, 107OY, 107OZ, 107PA, 107PB, 107PC, 107PD, 107PE, 107PF, 107PG, 107PH, 107PI, 107PJ, 107PK, 107PL, 107PM, 107PN, 107PO, 107PP, 107PQ, 107PR, 107PS, 107PT, 107PU, 107PV, 107PW, 107PX, 107PY, 107PZ, 107QA, 107QB, 107QC, 107QD, 107QE, 107QF, 107QG, 107QH, 107QI, 107QJ, 107QK, 107QL, 107QM, 107QN, 107QO, 107QP, 107QQ, 107QR, 107QS, 107QT, 107QU, 107QV, 107QW, 107QX, 107QY, 107QZ, 107RA, 107RB, 107RC, 107RD, 107RE, 107RF, 107RG, 107RH, 107RI, 107RJ, 107RK, 107RL, 107RM, 107RN, 107RO, 107RP, 107RQ, 107RR, 107RS, 107RT, 107RU, 107RV, 107RW, 107RX, 107RY, 107RZ, 107SA, 107SB, 107SC, 107SD, 107SE, 107SF, 107SG, 107SH, 107SI, 107SJ, 107SK, 107SL, 107SM, 107SN, 107SO, 107SP, 107SQ, 107SR, 107SS, 107ST, 107SU, 107SV, 107SW, 107SX, 107SY, 107SZ, 107TA, 107TB, 107TC, 107TD, 107TE, 107TF, 107TG, 107TH, 107TI, 107TJ, 107TK, 107TL, 107TM, 107TN, 107TO, 107TP, 107TQ, 107TR, 107TS, 107TT, 107TU, 107TV, 107TW, 107TX, 107TY, 107TZ, 107UA, 107UB, 107UC, 107UD, 107UE, 107UF, 107UG, 107UH, 107UI, 107UJ, 107UK, 107UL, 107UM, 107UN, 107UO, 107UP, 107UQ, 107UR, 107US, 107UT, 107UU, 107UV, 107UW, 107UX, 107UY, 107UZ, 107VA, 107VB, 107VC, 107VD, 107VE, 107VF, 107VG, 107VH, 107VI, 107VJ, 107VK, 107VL, 107VM, 107VN, 107VO, 107VP, 107VQ, 107VR, 107VS, 107VT, 107VU, 107VV, 107VW, 107VX, 107VY, 107VZ, 107WA, 107WB, 107WC, 107WD, 107WE, 107WF, 107WG, 107WH, 107WI, 107WJ, 107WK, 107WL, 107WM, 107WN, 107WO, 107WP, 107WQ, 107WR, 107WS, 107WT, 107WU, 107WV, 107WW, 107WX, 107WY, 107WZ, 107XA, 107XB, 107XC, 107XD, 107XE, 107XF, 107XG, 107XH, 107XI, 107XJ, 107XK, 107XL, 107XM, 107XN, 107XO, 107XP, 107XQ, 107XR, 107XS, 107XT, 107XU, 107XV, 107XW, 107XX, 107XY, 107XZ, 107YA, 107YB, 107YC, 107YD, 107YE, 107YF, 107YG, 107YH, 107YI, 107YJ, 107YK, 107YL, 107YM, 107YN, 107YO, 107YP, 107YQ, 107YR, 107YS, 107YT, 107YU, 107YV, 107YW, 107YX, 107YY, 107YZ, 107ZA, 107ZB, 107ZC, 107ZD, 107ZE, 107ZF, 107ZG, 107ZH, 107ZI, 107ZJ, 107ZK, 107ZL, 107ZM, 107ZN, 107ZO, 107ZP, 107ZQ, 107ZR, 107ZS, 107ZT, 107ZU, 107ZV, 107ZW, 107ZX, 107ZY, 107ZZ

LANDIS LIMITED 園藝有限公司  
 LANDSCAPE PLANNING, DESIGN AND CONSTRUCTION 園藝規劃、設計及建造  
 UNIT A, 107A, 107B, 107C, 107D, 107E, 107F, 107G, 107H, 107I, 107J, 107K, 107L, 107M, 107N, 107O, 107P, 107Q, 107R, 107S, 107T, 107U, 107V, 107W, 107X, 107Y, 107Z, 107AA, 107AB, 107AC, 107AD, 107AE, 107AF, 107AG, 107AH, 107AI, 107AJ, 107AK, 107AL, 107AM, 107AN, 107AO, 107AP, 107AQ, 107AR, 107AS, 107AT, 107AU, 107AV, 107AW, 107AX, 107AY, 107AZ, 107BA, 107BB, 107BC, 107BD, 107BE, 107BF, 107BG, 107BH, 107BI, 107BJ, 107BK, 107BL, 107BM, 107BN, 107BO, 107BP, 107BQ, 107BR, 107BS, 107BT, 107BU, 107BV, 107BW, 107BX, 107BY, 107BZ, 107CA, 107CB, 107CC, 107CD, 107CE, 107CF, 107CG, 107CH, 107CI, 107CJ, 107CK, 107CL, 107CM, 107CN, 107CO, 107CP, 107CQ, 107CR, 107CS, 107CT, 107CU, 107CV, 107CW, 107CX, 107CY, 107CZ, 107DA, 107DB, 107DC, 107DD, 107DE, 107DF, 107DG, 107DH, 107DI, 107DJ, 107DK, 107DL, 107DM, 107DN, 107DO, 107DP, 107DQ, 107DR, 107DS, 107DT, 107DU, 107DV, 107DW, 107DX, 107DY, 107DZ, 107EA, 107EB, 107EC, 107ED, 107EE, 107EF, 107EG, 107EH, 107EI, 107EJ, 107EK, 107EL, 107EM, 107EN, 107EO, 107EP, 107EQ, 107ER, 107ES, 107ET, 107EU, 107EV, 107EW, 107EX, 107EY, 107EZ, 107FA, 107FB, 107FC, 107FD, 107FE, 107FF, 107FG, 107FH, 107FI, 107FJ, 107FK, 107FL, 107FM, 107FN, 107FO, 107FP, 107FQ, 107FR, 107FS, 107FT, 107FU, 107FV, 107FW, 107FX, 107FY, 107FZ, 107GA, 107GB, 107GC, 107GD, 107GE, 107GF, 107GG, 107GH, 107GI, 107GJ, 107GK, 107GL, 107GM, 107GN, 107GO, 107GP, 107GQ, 107GR, 107GS, 107GT, 107GU, 107GV, 107GW, 107GX, 107GY, 107GZ, 107HA, 107HB, 107HC, 107HD, 107HE, 107HF, 107HG, 107HH, 107HI, 107HJ, 107HK, 107HL, 107HM, 107HN, 107HO, 107HP, 107HQ, 107HR, 107HS, 107HT, 107HU, 107HV, 107HW, 107HX, 107HY, 107HZ, 107IA, 107IB, 107IC, 107ID, 107IE, 107IF, 107IG, 107IH, 107II, 107IJ, 107IK, 107IL, 107IM, 107IN, 107IO, 107IP, 107IQ, 107IR, 107IS, 107IT, 107IU, 107IV, 107IW, 107IX, 107IY, 107IZ, 107JA, 107JB, 107JC, 107JD, 107JE, 107JF, 107JG, 107JH, 107JI, 107JJ, 107JK, 107JL, 107JM, 107JN, 107JO, 107JP, 107JQ, 107JR, 107JS, 107JT, 107JU, 107JV, 107JW, 107JX, 107JY, 107JZ, 107KA, 107KB, 107KC, 107KD, 107KE, 107KF, 107KG, 107KH, 107KI, 107KJ, 107KL, 107KM, 107KN, 107KO, 107KP, 107KQ, 107KR, 107KS, 107KT, 107KU, 107KV, 107KW, 107KX, 107KY, 107KZ, 107LA, 107LB, 107LC, 107LD, 107LE, 107LF, 107LG, 107LH, 107LI, 107LJ, 107LK, 107LM, 107LN, 107





- LEGEND:
- APPLICATION SITE BOUNDARY
  - PROPOSED HEAVY STANDARD TREE
  - PROPOSED SHRUBS/GROUND COVER
  - PROPOSED CREEPING PLANT
  - EXISTING LEVEL
  - PROPOSED LEVEL

Quantity	Code	Chinese Name	Botanical Name	Height (mm)	Spread (mm)	DBH (mm)	Spacing (mm)	Remark
<b>HEAVY STANDARD TREES</b>								
6	CT	刺楸魚木	<i>Cisteva tofoliata</i>	4000	1500	75	4000	Abundance of Foliage, Well-Formed, Full Spread Formed
3	OF	桂花	<i>Osmanthus fragrans</i>	3500	1500	75	4000	Abundance of Foliage, Well-Formed, Full Spread Formed
<b>SHRUBS</b>								
73	Drg	黃金金銀花	<i>Duranta repens 'Golden'</i>	300	250	-	250	-
29	Icn	龍船花	<i>Noya chinensis</i>	500	450	-	300	-
28	Mpa	九里香	<i>Murraya paniculata</i>	550	500	-	450	-
63	Sar	簕欓藤	<i>Scheffera arboricola</i>	450	300	-	250	-
28	Rhe	榕樹	<i>Rhaphis excelsa</i>	900	450	-	400	at least 6 shoots
<b>CREEPING PLANT</b>								
45	Bgl	勒杜羅	<i>Bougainvillea glabra</i>	600	300	-	500	-

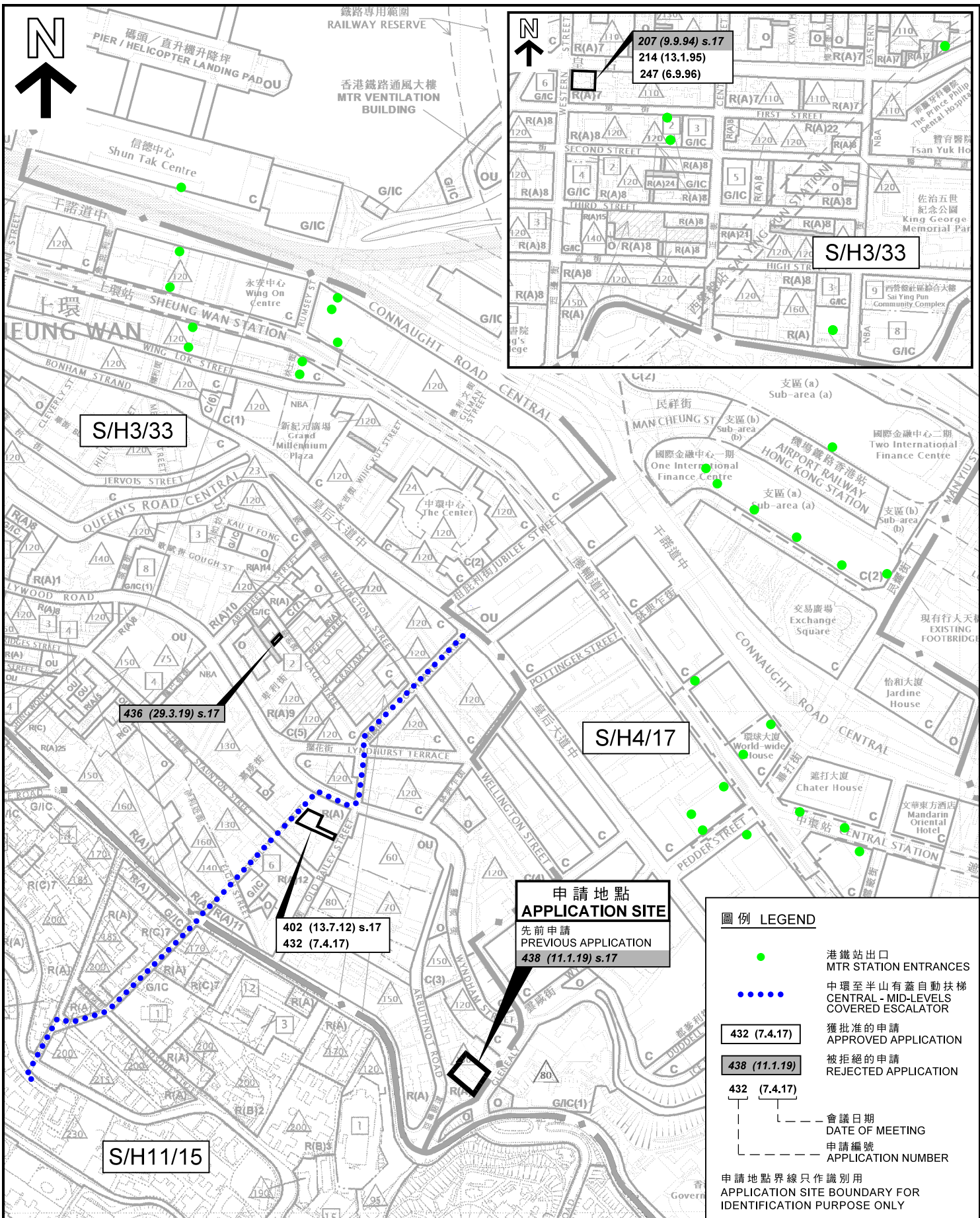
REVISION 校訂	DESCRIPTION 內容與實	DRAWN 繪圖	DATE 日期	CHECKED 審核	APPROVED 審批	DO NOT SCALE FROM THIS DRAWING 勿按圖量比例	SCALE 比例 1:125	DATE 日期 MAR 2020	PROJECT 項目 PROPOSED OFFICE DEVELOPMENT (AND SHOP & SERVICES/EATING PLACE) WITH A PEDESTRIAN ENHANCEMENT SCHEME IN 'RESIDENTIAL (GROUP A)' ZONE AT NOS. 1-6 GLEANEALY, CENTRAL.	DRAWN 繪圖 TF	CHECKED 審核 TF	APPROVED 審批 TF	LANDSCAPE ARCHITECTS LIMITED LANDSCAPE DESIGN AND CONSTRUCTION UNIT A, 10/F, 18A FORT COMMERCIAL BUILDING, 5 - 11 FORTSON ROAD, WAH CHAI, HONG KONG TEL: (852) 2861 2881 FAX: (852) 2861 2882	COPYRIGHT RESERVED 版權保留
-------------	------------------	----------	---------	------------	-------------	---------------------------------------	-------------------	---------------------	---	----------------	------------------	-------------------	--	-------------------------

Lan Des

CAD FILE NAME: C2021-PI02

參考編號 REFERENCE No. A/H3/441	繪圖 DRAWING R - 20
-----------------------------------	-------------------------





本摘要圖於2020年6月18日擬備，所根據的資料為：  
 於2019年8月9日展示的分區計劃大綱圖編號S/H3/33，以及  
 於2019年5月24日展示的分區計劃大綱圖編號S/H4/17，和於2020年3月13日展示的修訂圖編號R/S/H4/17-A1，以及於2010年3月2日核准的分區計劃大綱圖編號S/H11/15  
 EXTRACT PLAN PREPARED ON 18.6.2020 BASED ON OUTLINE ZONING PLANS No. S/H3/33 EXHIBITED ON 9.8.2019, S/H4/17 EXHIBITED ON 24.5.2019 & AMENDMENT PLAN No. R/S/H4/17-A1 EXHIBITED ON 13.3.2020 AND S/H11/15 APPROVED ON 2.3.2010

**位置圖 LOCATION PLAN**

擬議辦公室及商店及服務行業/食肆  
 香港中環己連拿利3-6號  
**PROPOSED OFFICE AND SHOP AND SERVICES / EATING PLACE**  
 3-6 GLENEALY, CENTRAL, HONG KONG

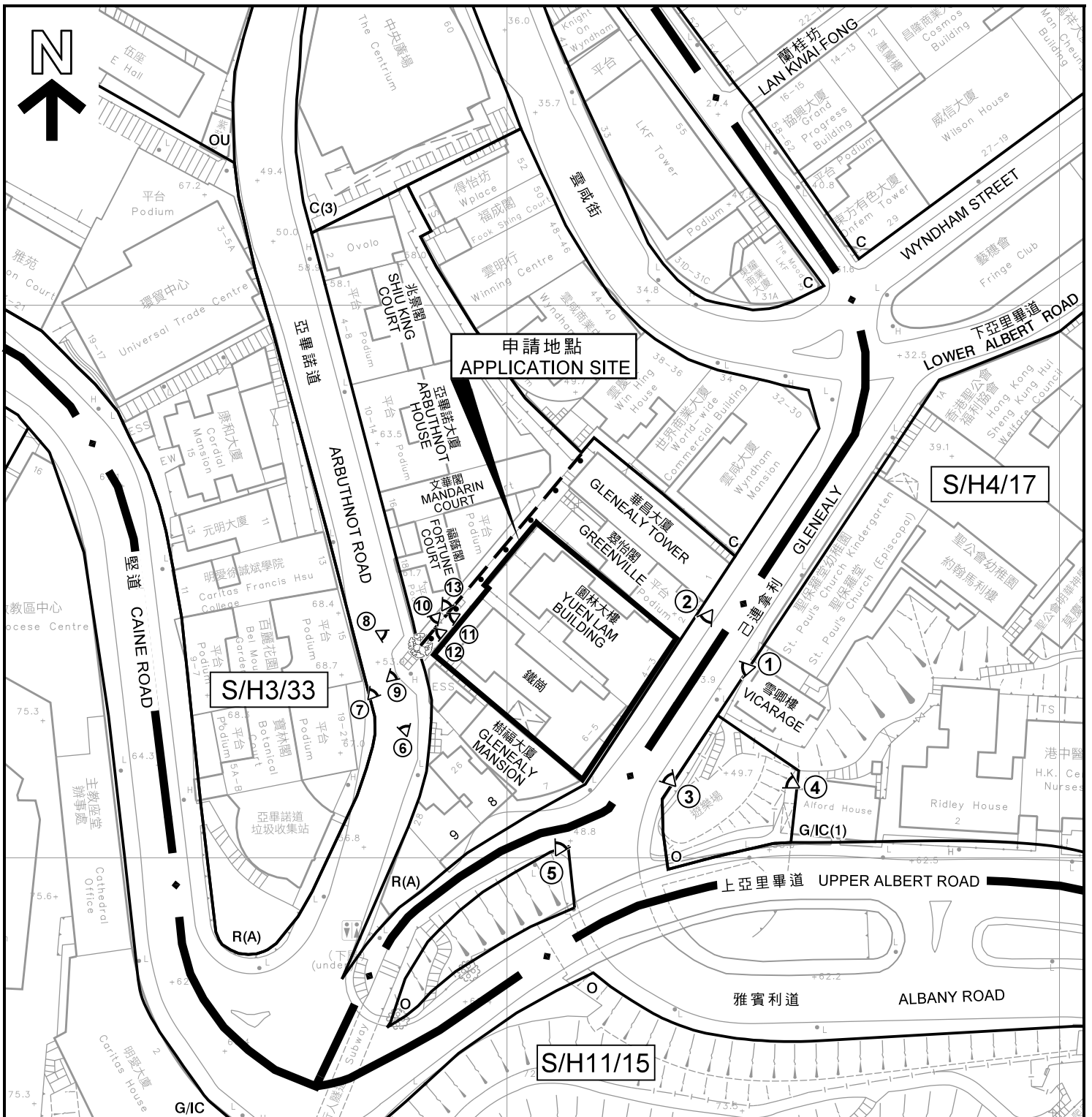
SCALE 1 : 5 000 比例尺

米 100 0 100 200 米  
 METRES

**規劃署**  
**PLANNING DEPARTMENT**

參考編號 REFERENCE No. **A/H3/441**

圖 PLAN **R - 1**



**圖例 LEGEND**

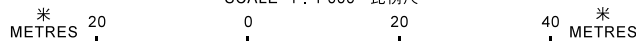
- |  |   |             |   |           |   |
|--|---|-------------|---|-----------|---|
|  | 現有石牆樹<br>(由路政署護養)<br>EXISTING STONE WALL TREE<br>(MAINTAINED BY<br>HIGHWAYS DEPARTMENT)                                     | <b>C</b>    | 商業<br>COMMERCIAL                                    |           | 休憩用地<br>OPEN SPACE                      |
|  | 現有擋土牆(由路政署維修)<br>(編號: 11SW-B/R74)<br>EXISTING RETAINING WALL<br>(No.: 11SW-B/R74)<br>(MAINTAINED BY<br>HIGHWAYS DEPARTMENT) | <b>R(A)</b> | 住宅(甲類)<br>RESIDENTIAL (GROUP A)                     | <b>OU</b> | 其他指定用途<br>OTHER SPECIFIED USES          |
|  |   | <b>G/IC</b> | 政府、機構或社區<br>GOVERNMENT, INSTITUTION OR<br>COMMUNITY |           | 實地照片的觀景點<br>VIEWING POINT OF SITE PHOTO |

申請地點界線只作識別用  
APPLICATION SITE BOUNDARY FOR IDENTIFICATION PURPOSE ONLY

**平面圖 SITE PLAN**

擬議辦公室及商店及服務行業/食肆  
中環已連拿利3-6號  
PROPOSED OFFICE AND  
SHOP AND SERVICES / EATING PLACE  
3-6 GLENEALY, CENTRAL

SCALE 1 : 1 000 比例尺



規劃署  
PLANNING  
DEPARTMENT



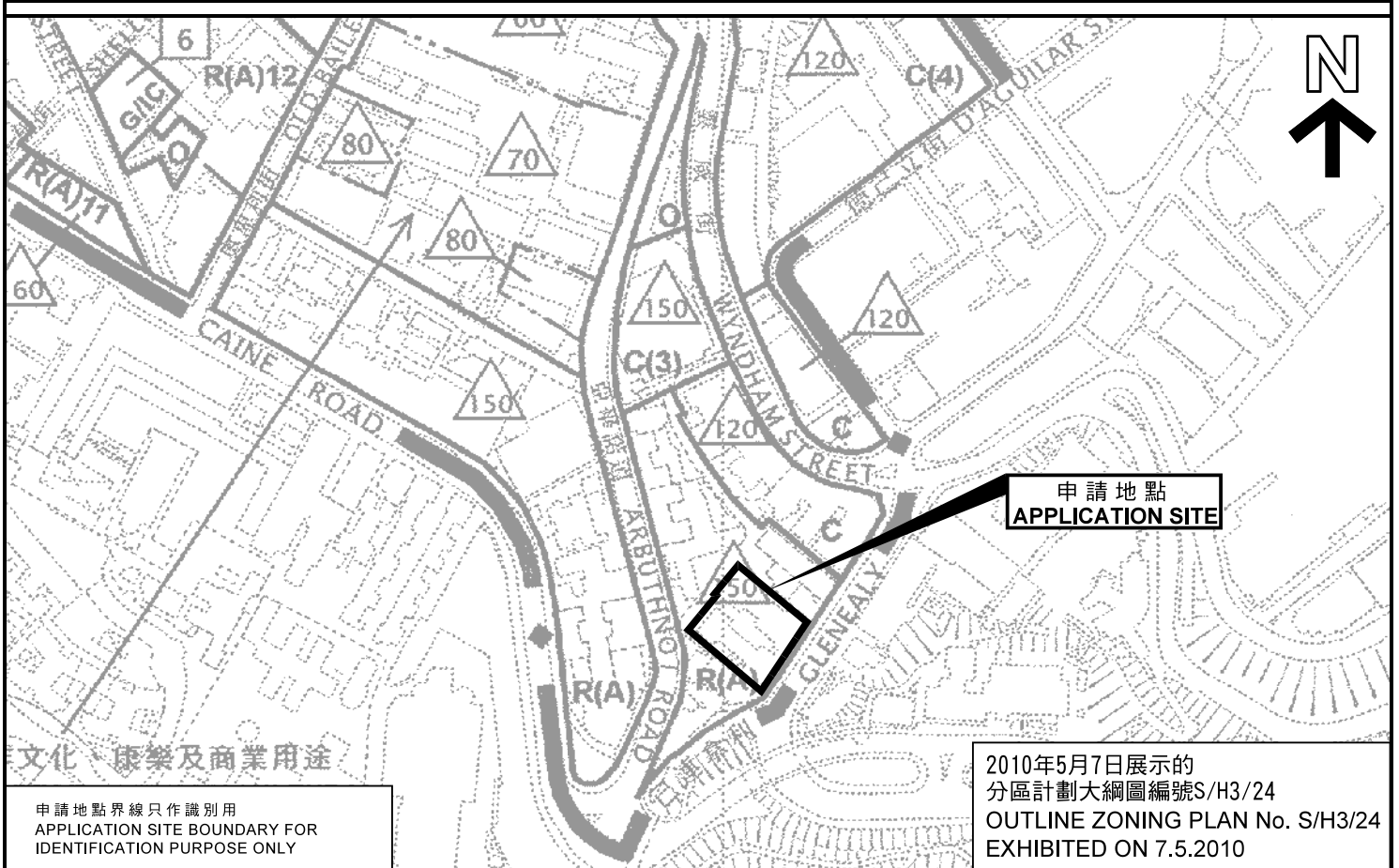
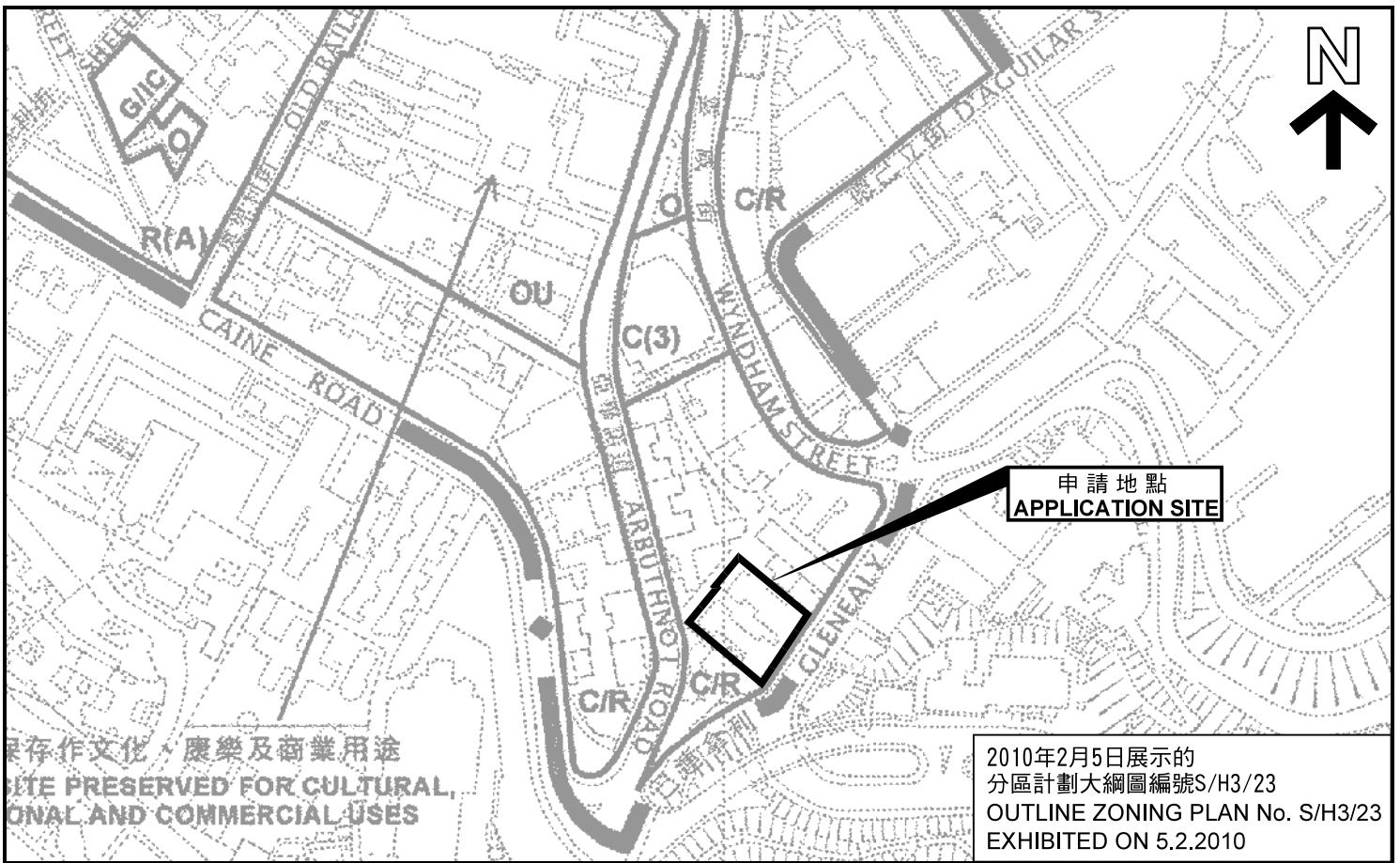
參考編號  
REFERENCE No.

A/H3/441

圖 PLAN

R - 2

本摘要圖於2020年6月18日擬備，  
所根據的資料為測量圖編號  
11-SW-8D及13B  
EXTRACT PLAN PREPARED ON 18.6.2020  
BASED ON SURVEY SHEETS No.  
11-SW-8D & 13B



本摘要圖於2020年6月4日擬備，所根據的資料為：於2010年2月5日展示的分區計劃大綱圖編號S/H3/23，以及於2010年5月7日展示的分區計劃大綱圖編號S/H3/24

EXTRACT PLAN PREPARED ON 4.6.2020 BASED ON OUTLINE ZONING PLAN Nos. S/H3/23 EXHIBITED ON 5.2.2010 AND S/H3/24 EXHIBITED ON 7.5.2010

**位置圖 LOCATION PLAN**

擬議辦公室及商店及服務行業/食肆  
香港中環已連拿利3-6號  
PROPOSED OFFICE AND SHOP AND SERVICES / EATING PLACE  
3-6 GLENEALY, CENTRAL, HONG KONG

SCALE 1:2 500 比例尺

米 50 0 50 100 米  
METRES

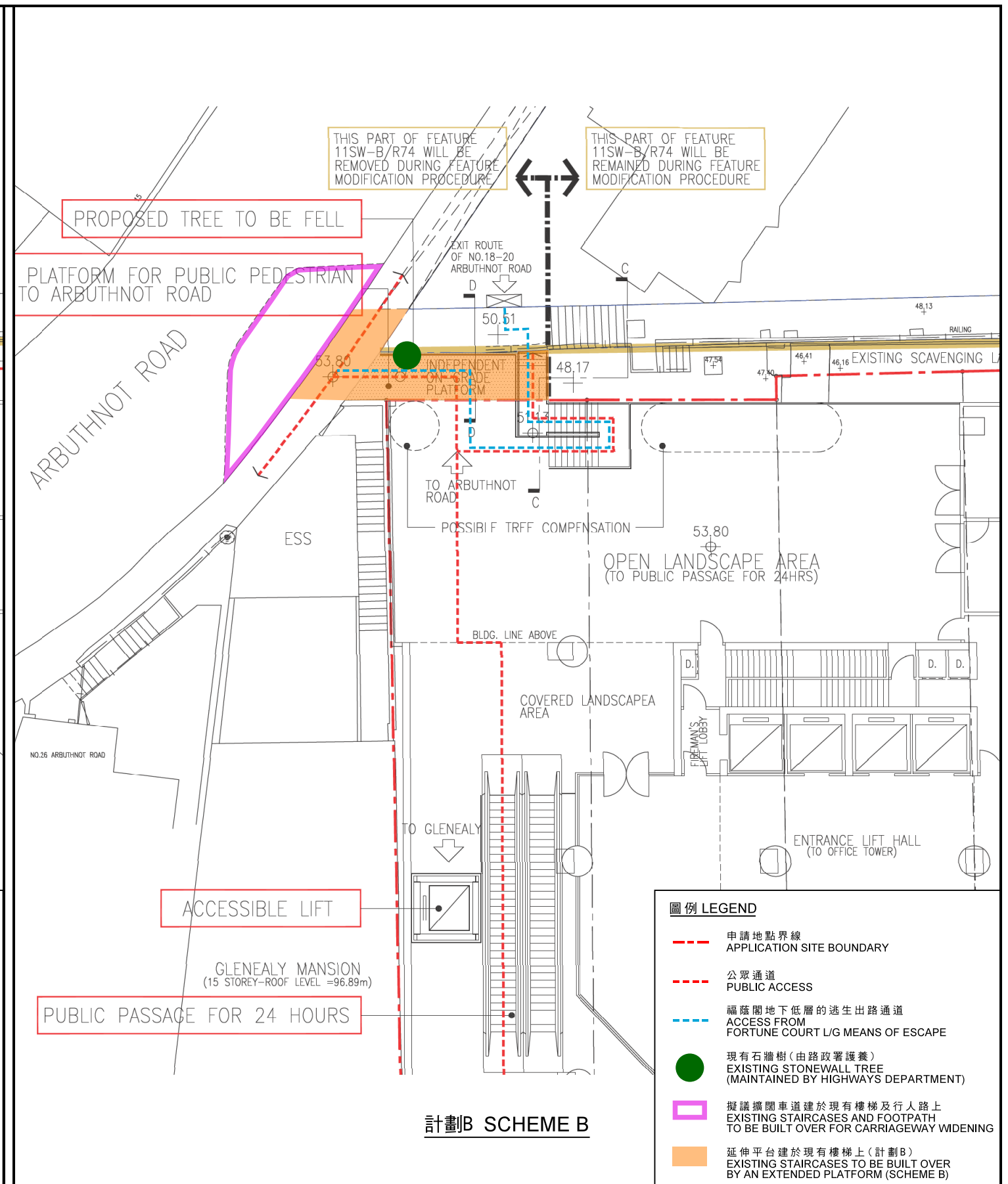
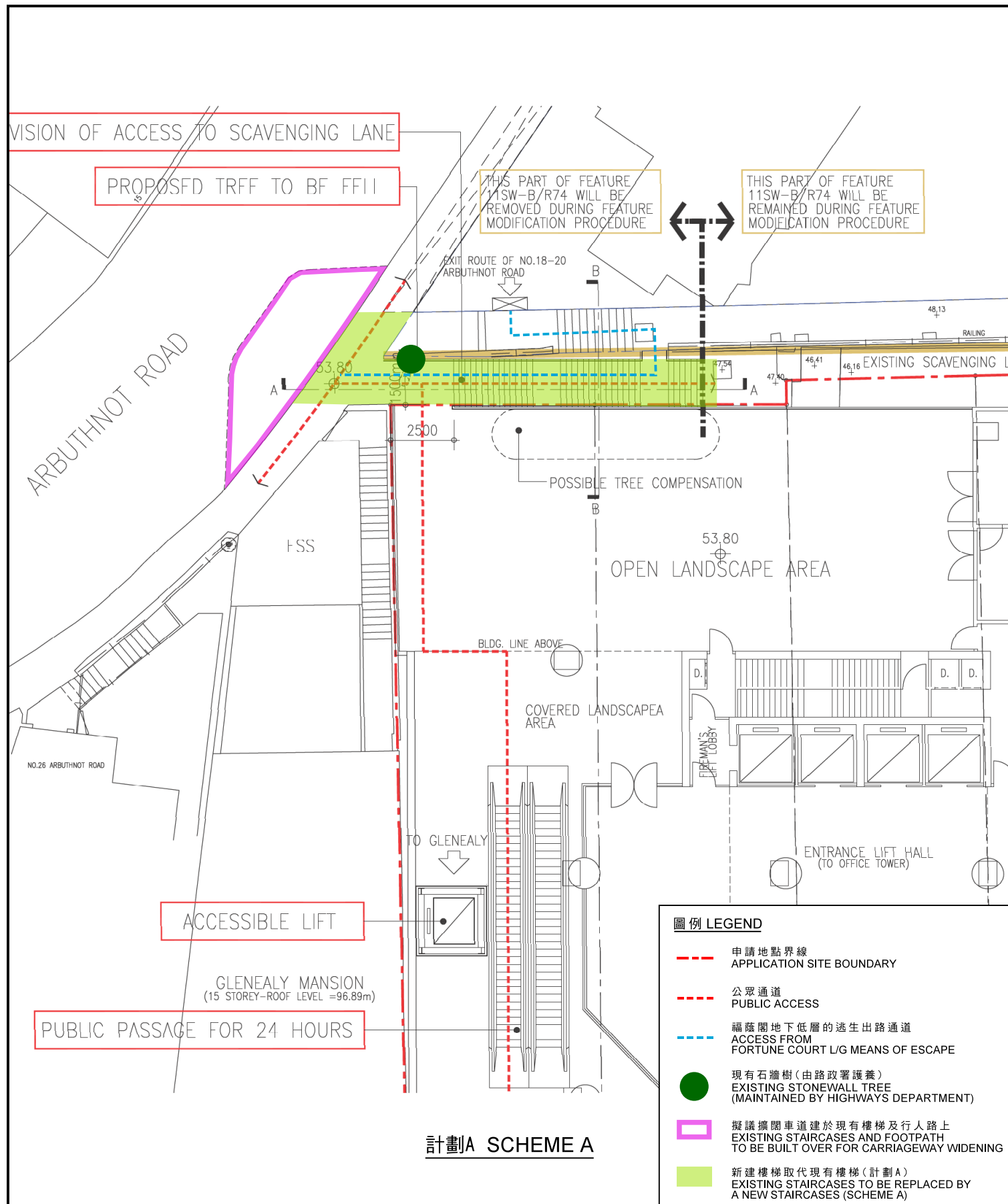
**規劃署  
PLANNING  
DEPARTMENT**



參考編號  
REFERENCE No. A/H3/441

圖 PLAN R - 3





擬議辦公室重建 - 在53.8水平的圖則 PROPOSED OFFICE RE-DEVELOPMENT - PLAN AT LEVEL 53.8

本摘要圖於2020年6月26日擬備。  
EXTRACT PLAN PREPARED ON 26.6.2020

擬議辦公室及商店及服務行業/食肆  
香港中環己連拿利3-6號  
PROPOSED OFFICE AND SHOP AND SERVICES / EATING PLACE  
3-6 GLENEALY, CENTRAL, HONG KONG

SCALE 1:200 比例尺  
METRES 4 0 4 8 12 16 METRES

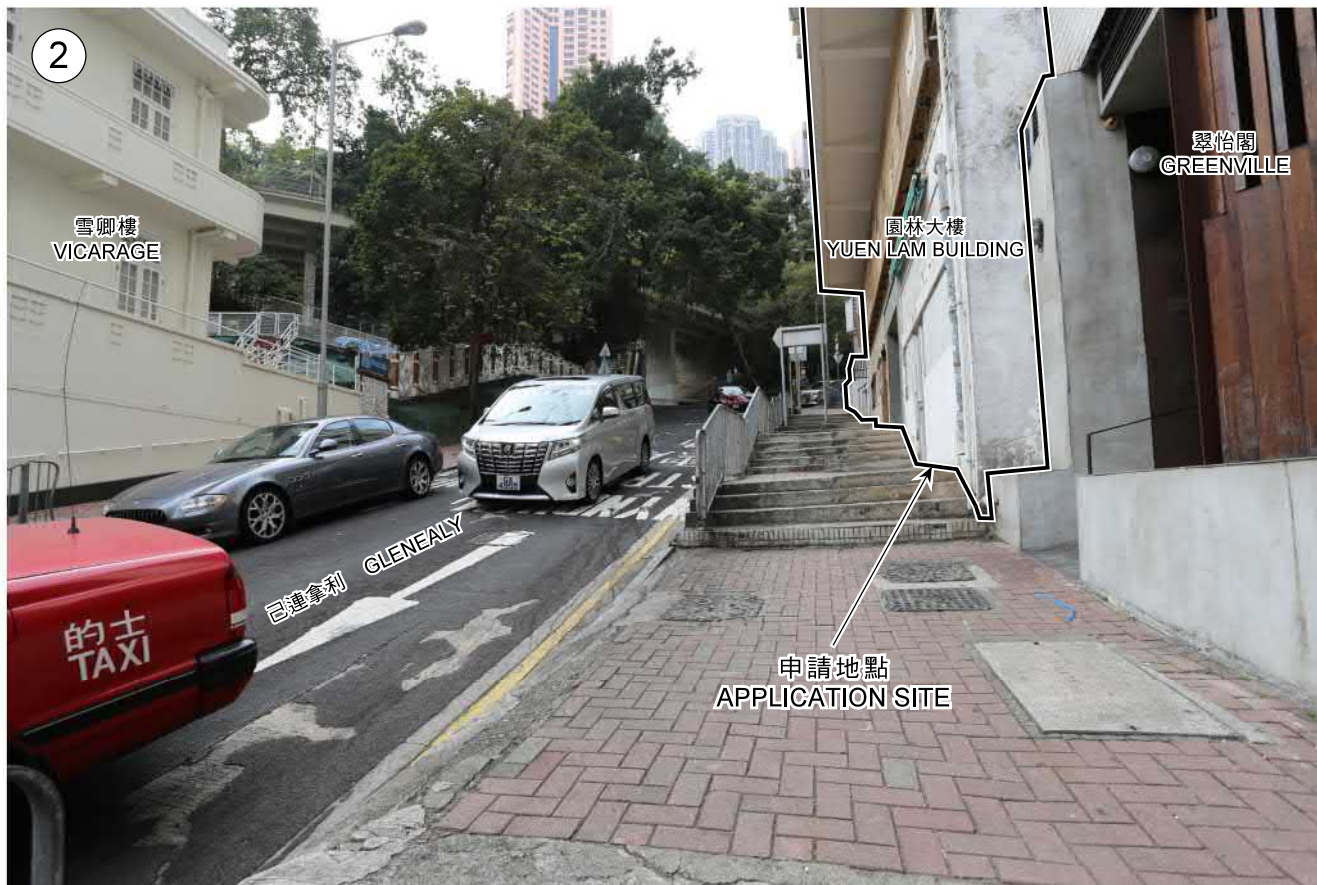
規劃署  
PLANNING DEPARTMENT



參考編號  
REFERENCE No.  
A/H3/441

圖 PLAN  
R - 4





申請地點界線只作識別用  
APPLICATION SITE BOUNDARY FOR IDENTIFICATION PURPOSE ONLY

本圖於2020年6月4日擬備，所根據的資料為攝於2019年12月13日的實地照片  
EXTRACT PLAN PREPARED ON 4.6.2020  
BASED ON SITE PHOTOS TAKEN ON 13.12.2019

實地照片 SITE PHOTOS

擬議辦公室及商店及服務行業/食肆  
中環已連拿利3-6號  
PROPOSED OFFICE AND  
SHOP AND SERVICES / EATING PLACE  
3-6 GLENEALY, CENTRAL

規劃署  
PLANNING  
DEPARTMENT



參考編號  
REFERENCE No.  
A/H3/441

圖 PLAN  
R - 5





申請地點界線只作識別用  
APPLICATION SITE BOUNDARY FOR IDENTIFICATION PURPOSE ONLY

實地照片 SITE PHOTOS

擬議辦公室及商店及服務行業/食肆  
中環己連拿利3-6號  
PROPOSED OFFICE AND  
SHOP AND SERVICES / EATING PLACE  
3-6 GLENEALY, CENTRAL

規劃署  
PLANNING  
DEPARTMENT



參考編號  
REFERENCE No.  
A/H3/441

圖 PLAN  
R - 6

本圖於2020年6月4日擬備，所根據的資料為攝於2019年5月3日的實地照片  
EXTRACT PLAN PREPARED ON 4.6.2020  
BASED ON SITE PHOTOS TAKEN  
ON 3.5.2019





申請地點界線只作識別用  
APPLICATION SITE BOUNDARY FOR IDENTIFICATION PURPOSE ONLY

本圖於2020年6月4日擬備，所根據的資料為攝於2019年5月3日的實地照片  
EXTRACT PLAN PREPARED ON 4.6.2020  
BASED ON SITE PHOTO TAKEN ON 3.5.2019

實地照片 SITE PHOTO

擬議辦公室及商店及服務行業/食肆  
中環己連拿利3-6號  
PROPOSED OFFICE AND  
SHOP AND SERVICES / EATING PLACE  
3-6 GLENEALY, CENTRAL

規劃署  
PLANNING  
DEPARTMENT



參考編號  
REFERENCE No.  
A/H3/441

圖 PLAN  
R - 7





申請地點界線只作識別用  
APPLICATION SITE BOUNDARY FOR IDENTIFICATION PURPOSE ONLY

實地照片 SITE PHOTOS

擬議辦公室及商店及服務行業/食肆  
中環己連拿利3-6號  
PROPOSED OFFICE AND  
SHOP AND SERVICES / EATING PLACE  
3-6 GLENEALY, CENTRAL

規劃署  
PLANNING  
DEPARTMENT

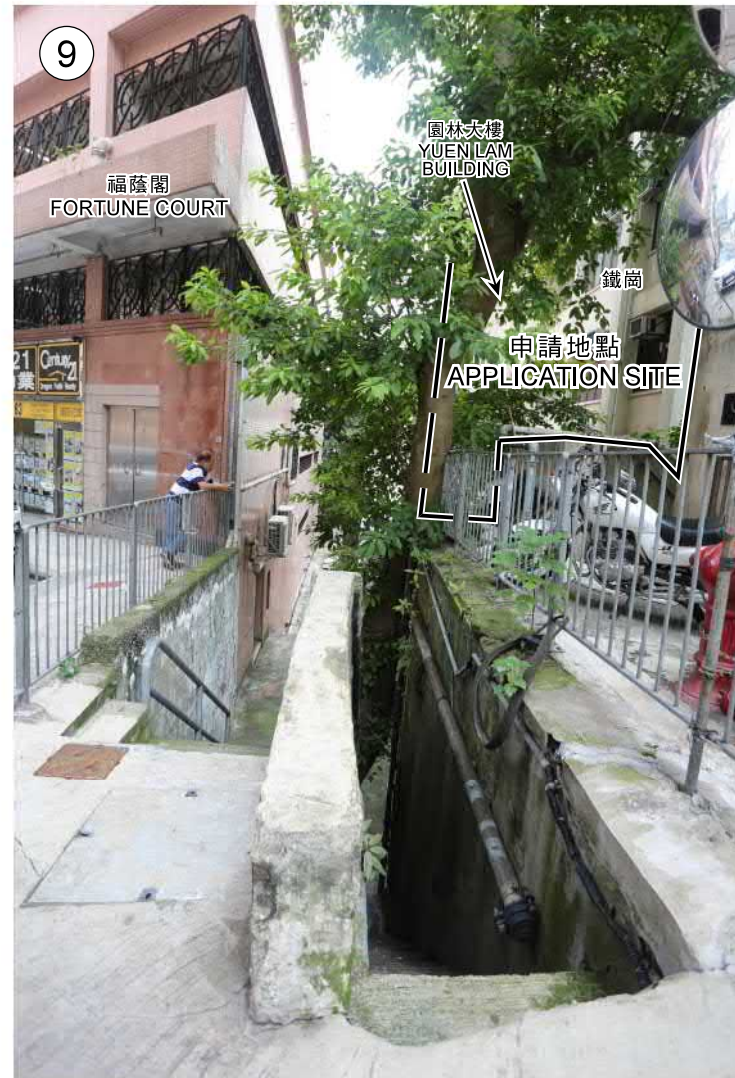


參考編號  
REFERENCE No.  
A/H3/441

圖 PLAN  
R - 8

本圖於2020年6月4日擬備，所根據的資料為攝於2019年6月21日(上)及2019年5月3日(下)的實地照片  
EXTRACT PLAN PREPARED ON 4.6.2020  
BASED ON SITE PHOTOS TAKEN ON  
21.6.2019 (UPPER) & 3.5.2019 (LOWER)





申請地點界線只作識別用  
APPLICATION SITE BOUNDARY FOR IDENTIFICATION PURPOSE ONLY

實地照片 SITE PHOTOS

本圖於2020年6月4日擬備，所根據的資料為攝於2019年8月20日的實地照片  
EXTRACT PLAN PREPARED ON 4.6.2020  
BASED ON SITE PHOTOS TAKEN ON 20.8.2019

擬議辦公室及商店及服務行業/食肆  
中環己連拿利3-6號  
PROPOSED OFFICE AND  
SHOP AND SERVICES / EATING PLACE  
3-6 GLENEALY, CENTRAL

規劃署  
PLANNING  
DEPARTMENT



參考編號  
REFERENCE No.  
A/H3/441

圖 PLAN  
R - 9





申請地點界線只作識別用  
APPLICATION SITE BOUNDARY FOR IDENTIFICATION PURPOSE ONLY

**實地照片 SITE PHOTOS**

本圖於2020年6月4日擬備，所根據的資料為攝於2019年5月3日(左)及2019年8月20日(右)的實地照片  
EXTRACT PLAN PREPARED ON 4.6.2020 BASED ON SITE PHOTOS TAKEN ON 3.5.2019 (LEFT) & 20.8.2019 (RIGHT)

擬議辦公室及商店及服務行業/食肆  
中環己連拿利3-6號  
PROPOSED OFFICE AND SHOP AND SERVICES / EATING PLACE  
3-6 GLENEALY, CENTRAL

規劃署  
PLANNING DEPARTMENT



參考編號  
REFERENCE No.  
A/H3/441

圖 PLAN  
R - 10





申請地點界線只作識別用  
APPLICATION SITE BOUNDARY FOR IDENTIFICATION PURPOSE ONLY

實地照片 SITE PHOTOS

本圖於2020年6月4日擬備，所根據的資料為攝於2019年7月11日(左)及2019年8月20日(右)的實地照片  
EXTRACT PLAN PREPARED ON 4.6.2020 BASED ON SITE PHOTOS TAKEN ON 11.7.2019 (LEFT) & 20.8.2019 (RIGHT)

擬議辦公室及商店及服務行業/食肆  
中環己連拿利3-6號  
PROPOSED OFFICE AND SHOP AND SERVICES / EATING PLACE  
3-6 GLENEALY, CENTRAL

規劃署  
PLANNING DEPARTMENT



參考編號  
REFERENCE No.  
A/H3/441

圖 PLAN  
R - 11