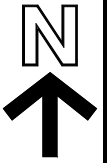


西貢東郊野公園
SAI KUNG EAST COUNTRY PARK



申述個案編號R1至R17
REPRESENTATIONS No. R1 TO R17
相關意見編號C1至C61
RELATED COMMENTS No. C1 TO C61



申述個案編號R1, R4至R6及R17
REPRESENTATIONS No. R1, R4 TO R6 AND R17
相關意見編號C1至C54
RELATED COMMENTS No. C1 TO C54

圖例 LEGEND

修訂項目 AMENDMENT ITEMS

 由「鄉村式發展」地帶改劃為「政府、機構或社區(1)」地帶
REZONING FROM "VILLAGE TYPE DEVELOPMENT"
TO "GOVERNMENT, INSTITUTION OR COMMUNITY (1)"

 由「政府、機構或社區」地帶改劃為「自然保育區」
REZONING FROM "GOVERNMENT, INSTITUTION OR
COMMUNITY" TO "CONSERVATION AREA"

用途地帶界線只作識別用
ZONING BOUNDARY FOR IDENTIFICATION PURPOSE ONLY

申述地點位置圖
LOCATION PLAN OF REPRESENTATION SITES

就白腊分區計劃大綱草圖編號 S/SK-PL/3
提出的申述個案編號R1至R17及相關意見編號C1至C61作出考慮
CONSIDERATION OF REPRESENTATIONS No. R1 TO R17
AND RELATED COMMENTS No. C1 TO C61
TO THE DRAFT PAK LAP OUTLINE ZONING PLAN No. S/SK-PL/3

規劃署
PLANNING
DEPARTMENT



本摘要圖於2020年7月15日擬備，
所根據的資料為於2020年4月3日
展示的分區計劃大綱草圖編號S/SK-PL/3
EXTRACT PLAN PREPARED ON 15.7.2020
BASED ON DRAFT OUTLINE ZONING PLAN
No. S/SK-PL/3 EXHIBITED ON 3.4.2020

參考編號
REFERENCE No.
R/S/SK-PL/3-1 to 17

圖 PLAN
P-1

SCALE 1:5 000 比例尺
米 METRES 100 0 100 200 米 METRES