

# 銅鑼灣

# Causeway Bay

Revised Figures



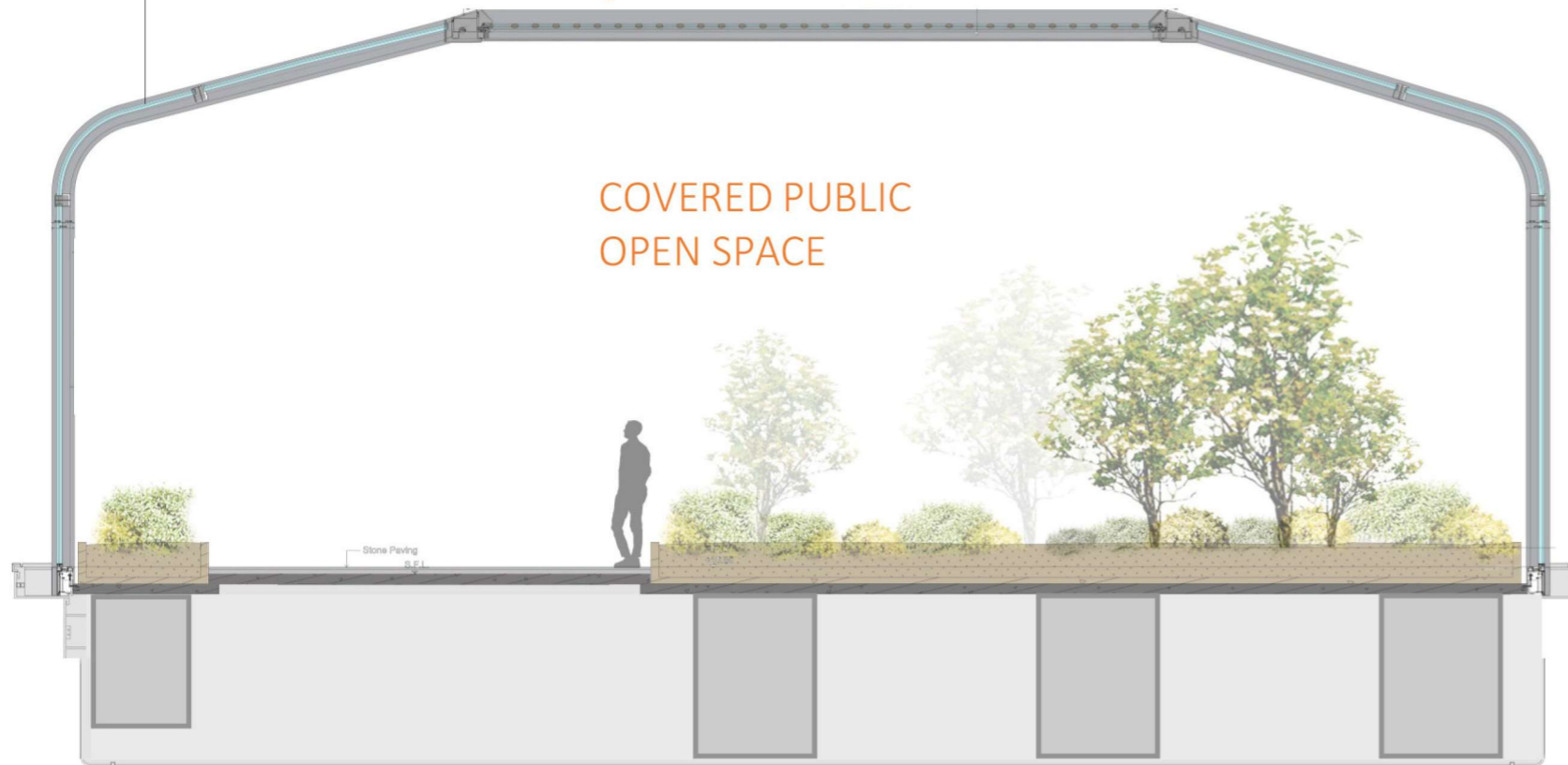


# COVERED LANDSCAPE BRIDGE



**ENCLOSED LANDSCAPE BRIDGE**  
 A BRIDGE CONNECTION BETWEEN EDGED BLUE AND EDGED RED SITES TO ENHANCE PEDESTRIAN CONNECTIVITY WHICH IS FULLY ENCLOSED WITH QUALITY LANDSCAPE & GREENERY

TRANSPARENT/  
SEMI-TRANSPARENT COVERING



IMAGES FOR REFERENCE ONLY, SUBJECT TO DETAIL DESIGN



Title	Covered Landscape Bridge		
Scale	N.T.S.	Date	January 2024
Figure No.	4.6		



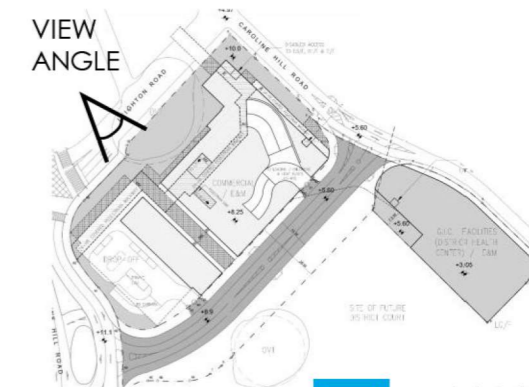
# VISUAL CORRIDOR BETWEEN 2 OVTS



## VISUAL CORRIDOR BETWEEN 2 OVTS

A VISUAL CORRIDOR IS PROPOSED AT G/F TO ALLOW VISUALL CONNECTION BETWEEN 2 OVTS AT STREET LEVELS. IT ALSO SERVES AS A COVERED PUBLIC OPEN SPACE (POS) & PEDESTRIAN WALKWAY

\* IMAGE FOR REFERENCE ONLY, SUBJECT TO DETAIL DESIGN



RONALD LU & PARTNERS



Title			
Visual Corridor between Two OVTS			
Scale	N.T.S.	Date	January 2024
		Figure No.	4.7a

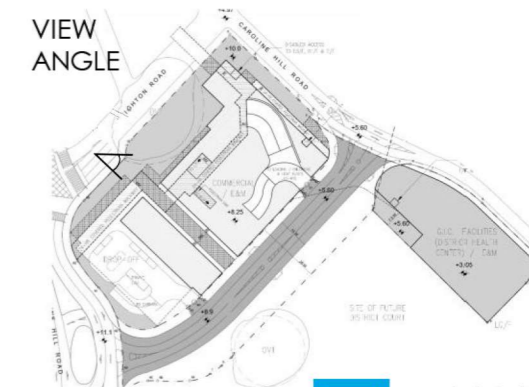


# VISUAL CORRIDOR BETWEEN 2 OVTS



## VISUAL CORRIDOR BETWEEN 2 OVTS

A VISUAL CORRIDOR IS PROPOSED AT G/F TO ALLOW VISUALL CONNECTION BETWEEN 2 OVTS AT STREET LEVELS. IT ALSO SERVES AS A COVERED PUBLIC OPEN SPACE (POS) & PEDESTRIAN WALKWAY



**RONALD LU & PARTNERS**

\* IMAGE FOR REFERENCE ONLY, SUBJECT TO DETAIL DESIGN

Patchway Holdings (HK) Limited



Submission of Layout Plan and Application for Commercial Development on IL No. 8945 Causeway Bay, Hong Kong

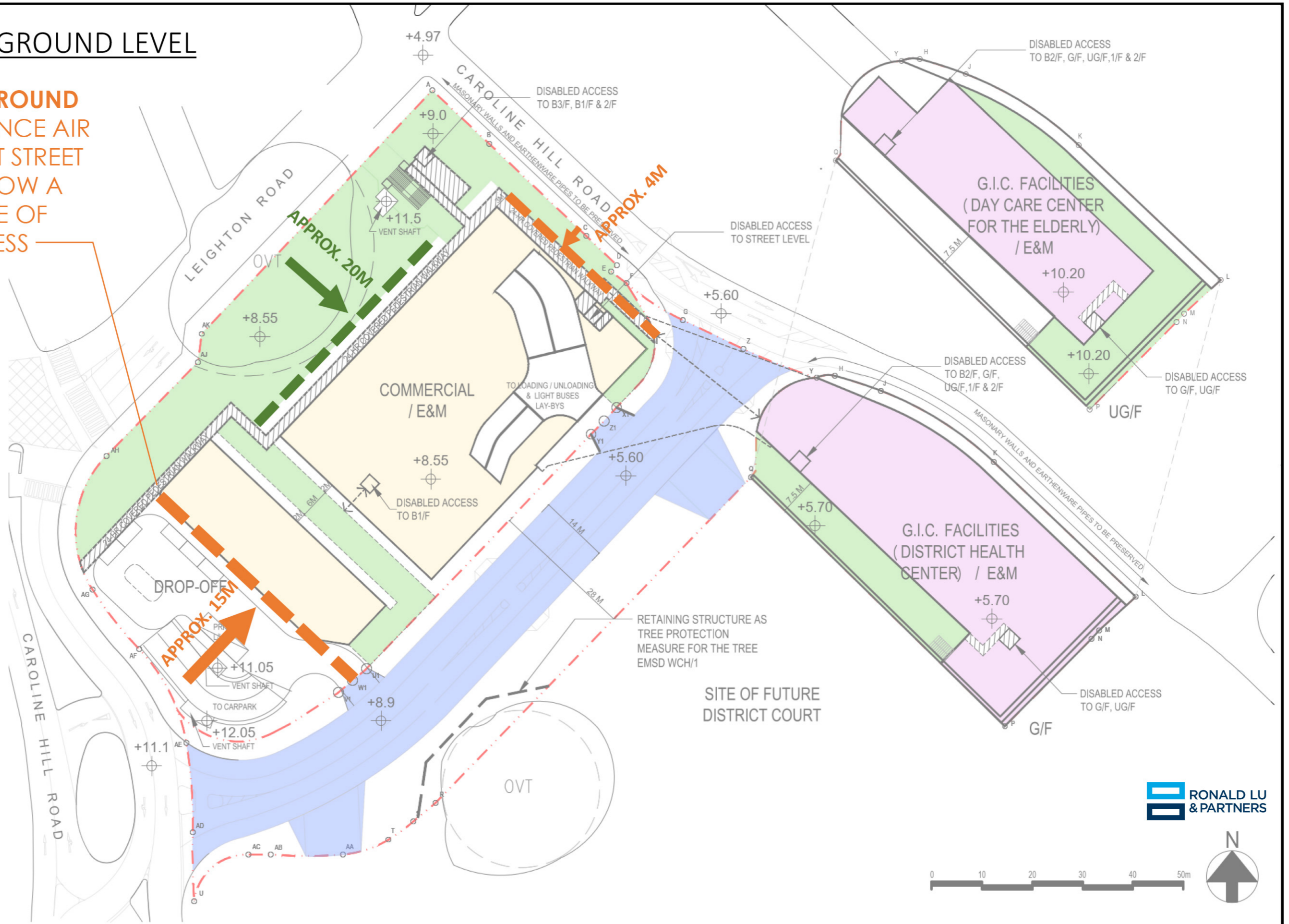


Title	Visual Corridor between Two OVTS		
Scale	N.T.S.	Date	January 2024
Figure No.	4.7 b		

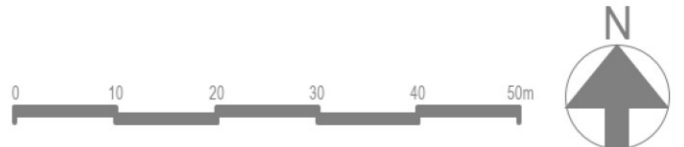


# SET-BACK AT GROUND LEVEL

**SET-BACK AT GROUND LEVEL TO ENHANCE AIR VENTILATION AT STREET LEVEL AND ALLOW A HIGHER DEGREE OF VISUAL OPENNESS**



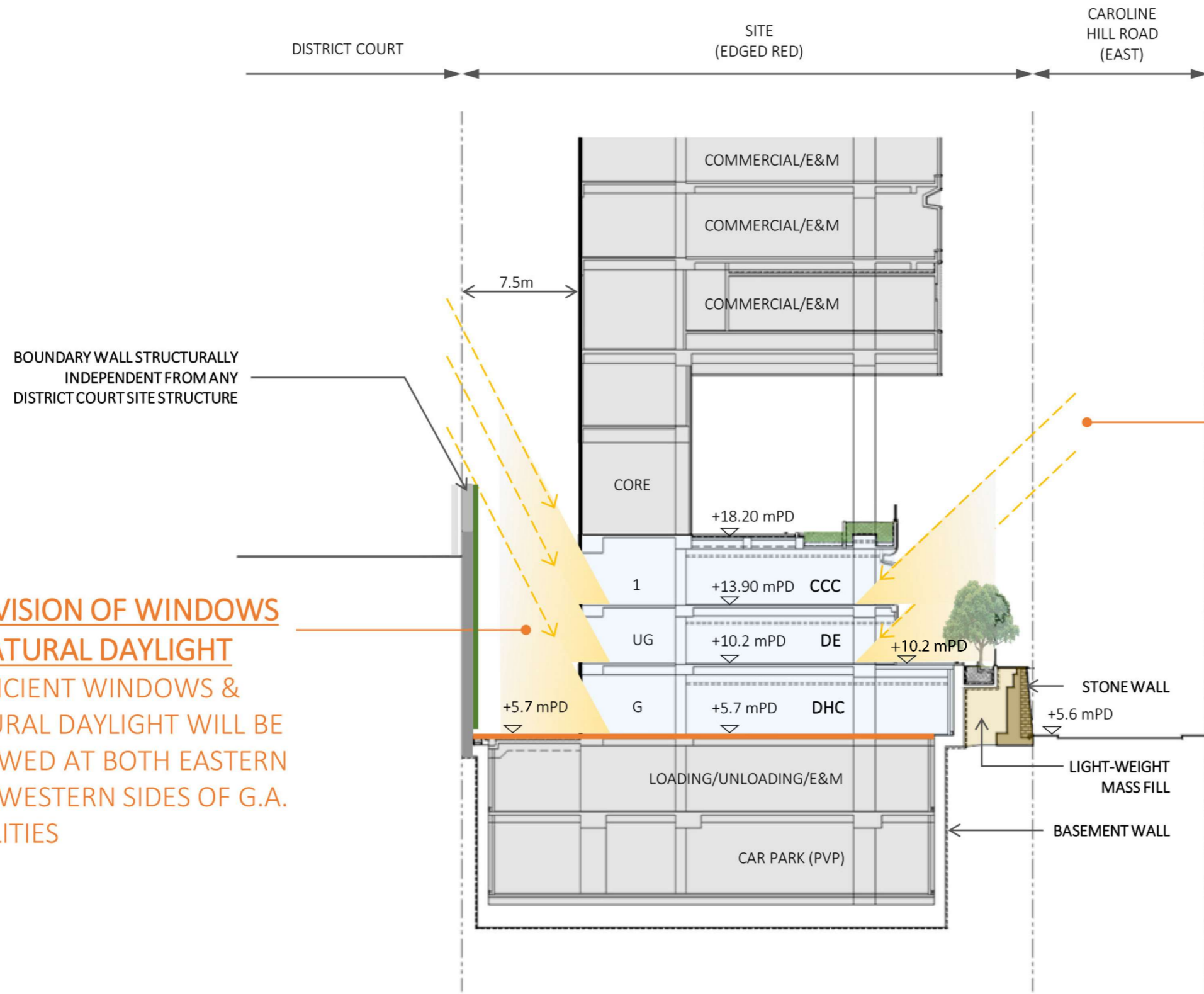
**RONALD LU & PARTNERS**





# G.I.C. FACILITIES

## WITH WINDOW FRONTAGE & NATURAL DAYLIGHT



**PROVISION OF WINDOWS & NATURAL DAYLIGHT**  
SUFFICIENT WINDOWS & NATURAL DAYLIGHT WILL BE ALLOWED AT BOTH EASTERN AND WESTERN SIDES OF G.A. FACILITIES

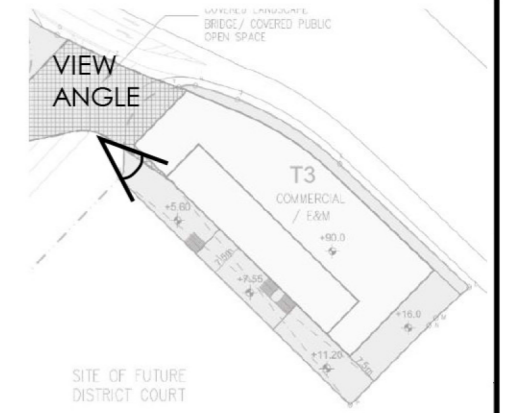
**PROVISION OF WINDOWS & NATURAL DAYLIGHT**  
SUFFICIENT WINDOWS & NATURAL DAYLIGHT WILL BE ALLOWED AT BOTH EASTERN AND WESTERN SIDES OF G.A. FACILITIES





# GIC FACILITIES

## WITH WINDOW FRONTAGE & NATURAL DAYLIGHT



PUBLIC OPEN SPACE (POS) WITH STEPPED TERRACE, GREENERY & LANDSCAPE

GIC FACILITIES OPENING UP TO PUBLIC OPEN SPACE WITH NATURAL DAYLIGHT & GREEN LANDSCAPE

ON-GRADE LANDSCAPE

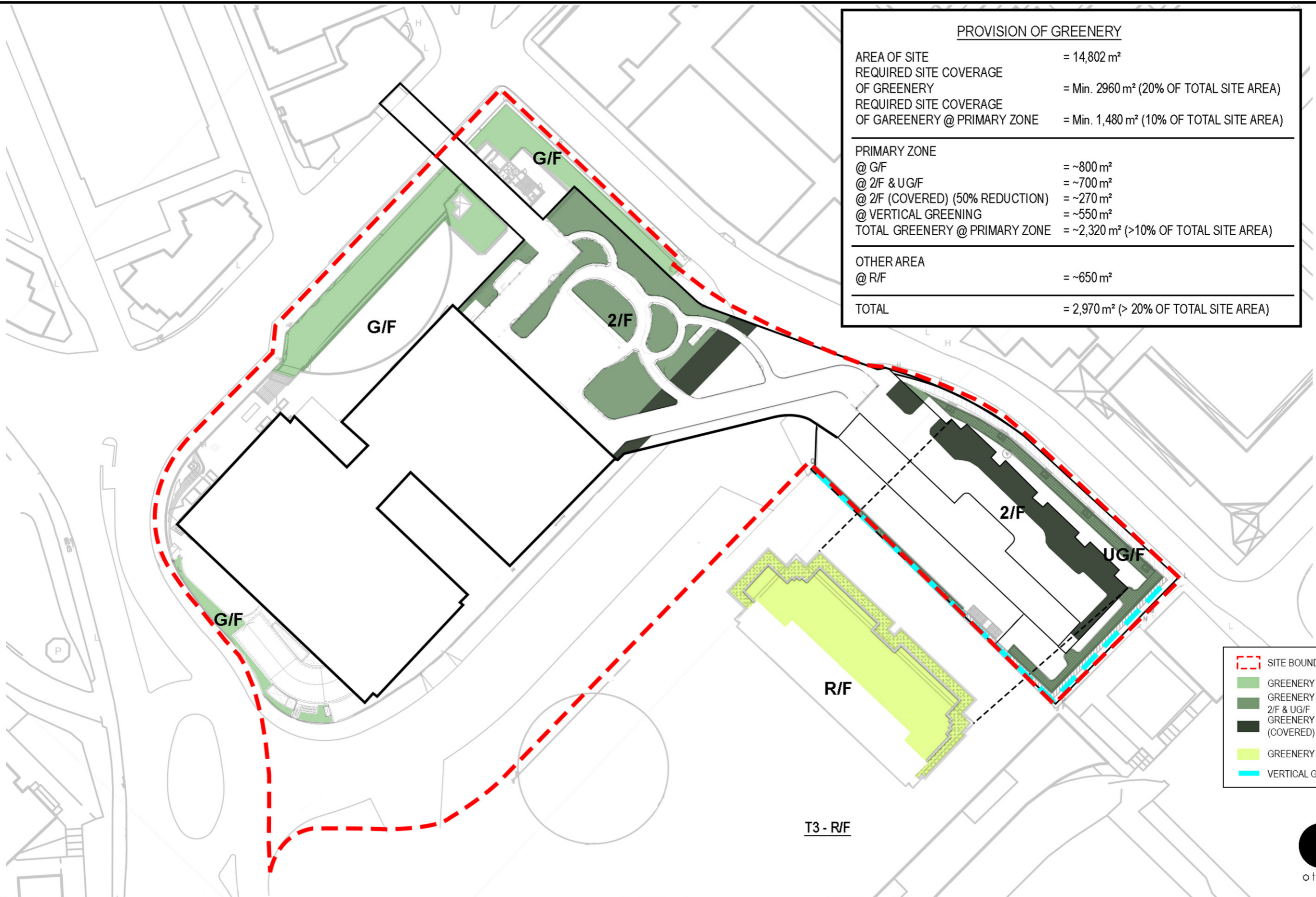
7.5M SETBACK



Title	GIC Facilities with Window Frontage and Natural Daylight		
Scale	N.T.S.	Date	January 2024
Figure No.	4.9c		



PROVISION OF GREENERY	
AREA OF SITE	= 14,802 m <sup>2</sup>
REQUIRED SITE COVERAGE OF GREENERY	= Min. 2,960 m <sup>2</sup> (20% OF TOTAL SITE AREA)
REQUIRED SITE COVERAGE OF GREENERY @ PRIMARY ZONE	= Min. 1,480 m <sup>2</sup> (10% OF TOTAL SITE AREA)
<hr/>	
PRIMARY ZONE @ G/F	= ~800 m <sup>2</sup>
@ 2/F & UG/F	= ~700 m <sup>2</sup>
@ 2/F (COVERED) (50% REDUCTION)	= ~270 m <sup>2</sup>
@ VERTICAL GREENING	= ~550 m <sup>2</sup>
TOTAL GREENERY @ PRIMARY ZONE	= ~2,320 m <sup>2</sup> (>10% OF TOTAL SITE AREA)
<hr/>	
OTHER AREA @ R/F	= ~650 m <sup>2</sup>
<hr/>	
TOTAL	= 2,970 m <sup>2</sup> (> 20% OF TOTAL SITE AREA)



- - - SITE BOUNDARY
- GREENERY AREA -G/F
- GREENERY AREA- 2/F & UG/F
- GREENERY AREA-2/F (COVERED)
- GREENERY AREA-R/F
- VERTICAL GREENING

