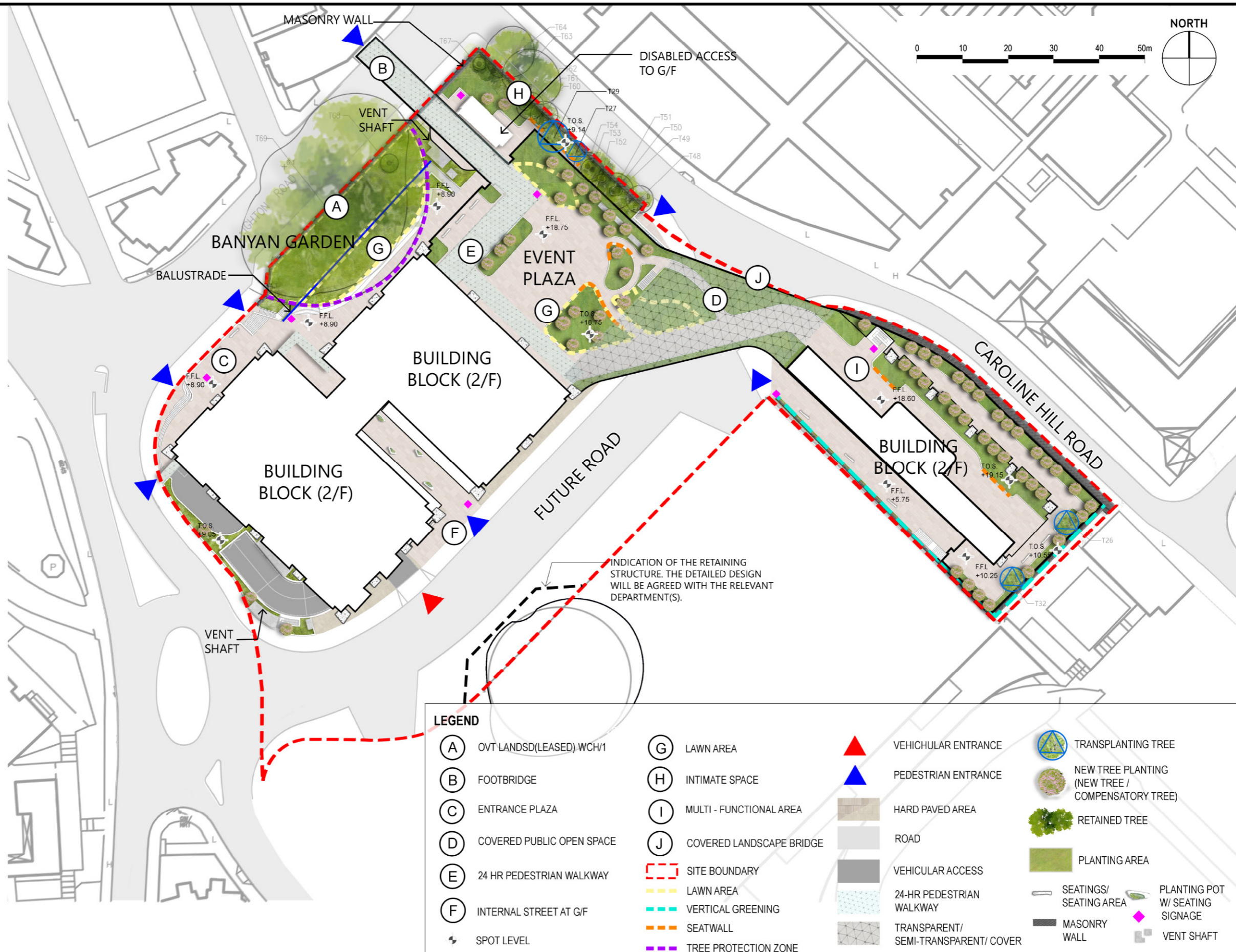


銅鑼灣

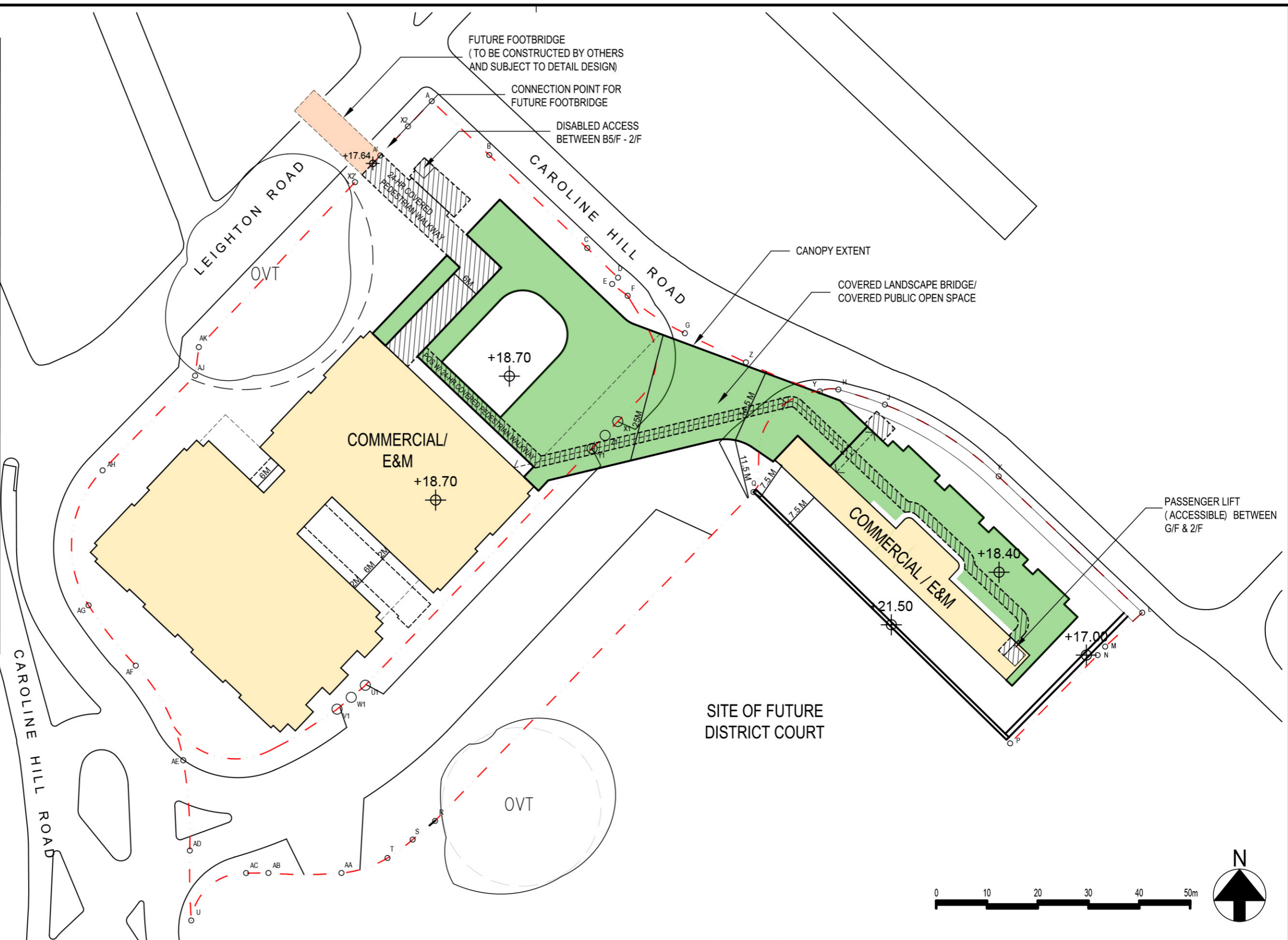
Causeway Bay

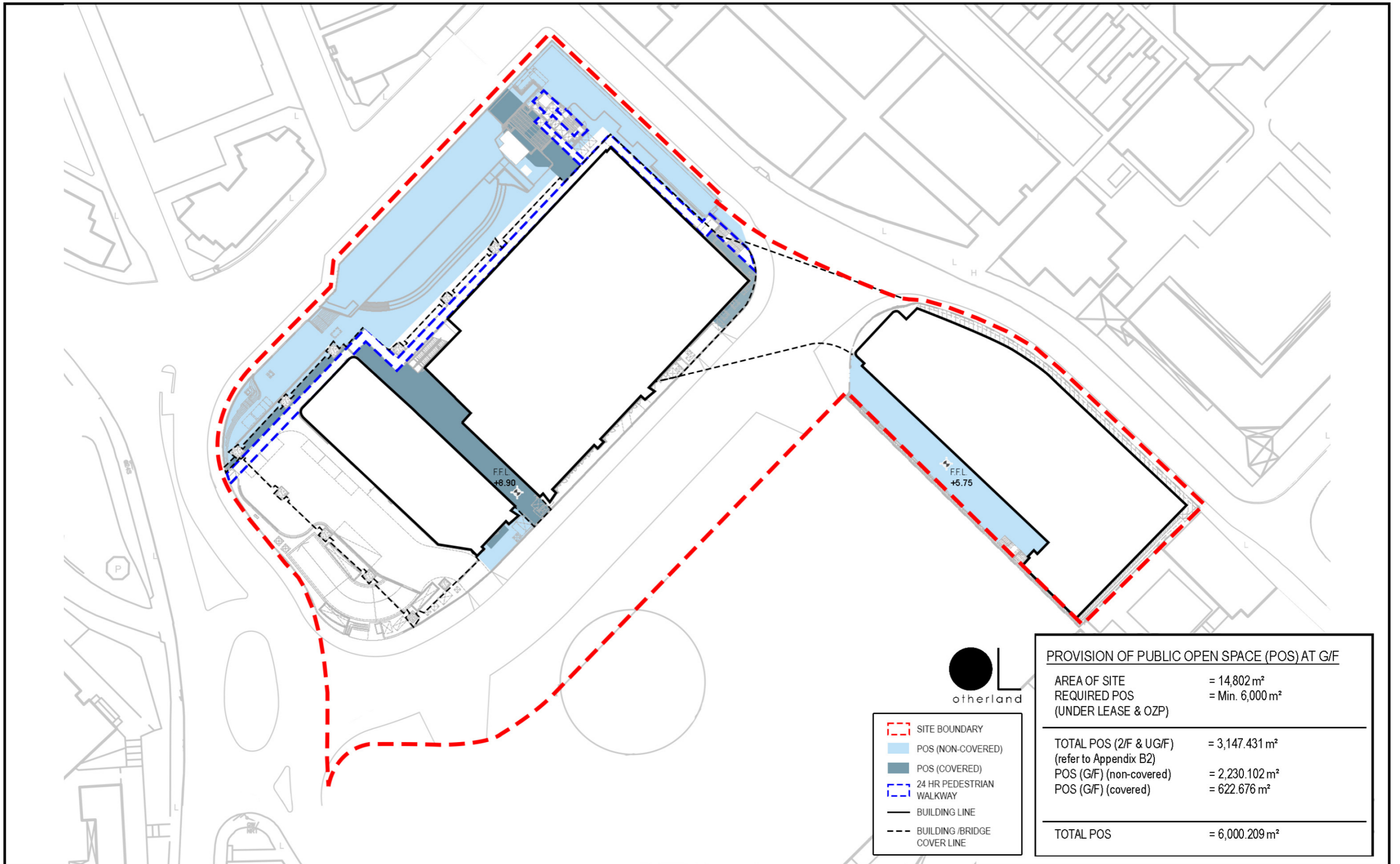
Revised Figures

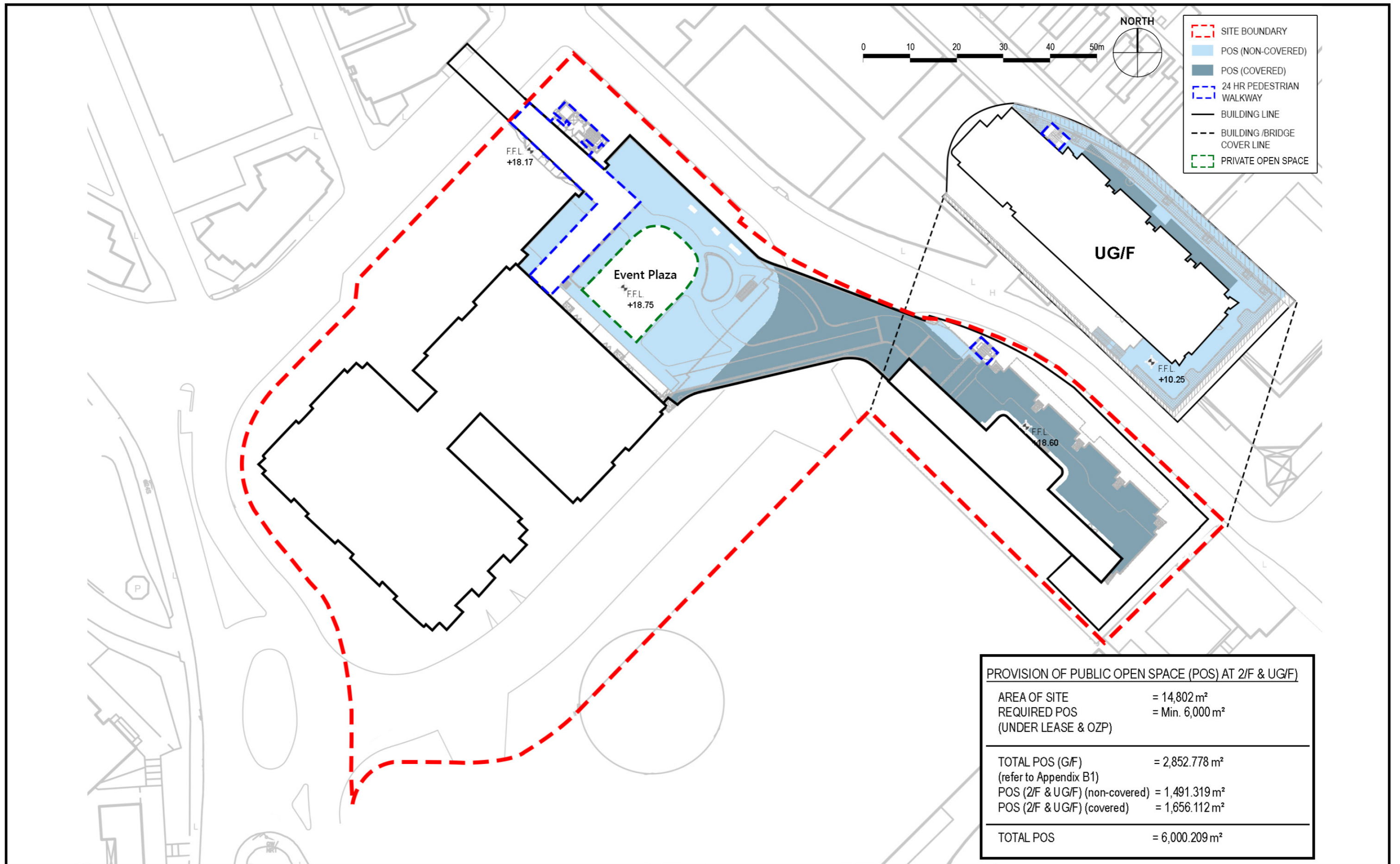




- LEGEND**
- APPLICATION SITE
 - PINK HATCHED BLUE
NO STRUCTURE ERECTED ABOVE OR
WITHIN 4M BELOW GROUND LEVEL
 - PUBLIC OPEN SPACE
 - COMMERCIAL/E&M
 - G.I.C. FACILITIES
 - FUTURE FOOTBRIDGE
 - LIGHT BUSES LAYBYS
 - CARPARK (PVP)
 - CARPARK (PRIVATE)
 - CARPARK
(G.I.C. FACILITIES)
 - ACCESS ROAD
 - LOADING & UNLOADING
CARPARK (PVP)
 - UNEXCAVATED
 - 24-HR PEDESTRIAN
WALKWAY
 - PUBLIC OPEN SPACE
WITH 24-HR
PEDESTRIAN WALKWAY
 - PEDESTRIAN LINK
 - E&M
 - CIRCULATION/
E&M







PROVISION OF PUBLIC OPEN SPACE (POS) AT 2/F & UG/F	
AREA OF SITE	= 14,802 m ²
REQUIRED POS (UNDER LEASE & OZP)	= Min. 6,000 m ²
<hr/>	
TOTAL POS (G/F) (refer to Appendix B1)	= 2,852.778 m ²
POS (2/F & UG/F) (non-covered)	= 1,491.319 m ²
POS (2/F & UG/F) (covered)	= 1,656.112 m ²
<hr/>	
TOTAL POS	= 6,000.209 m ²

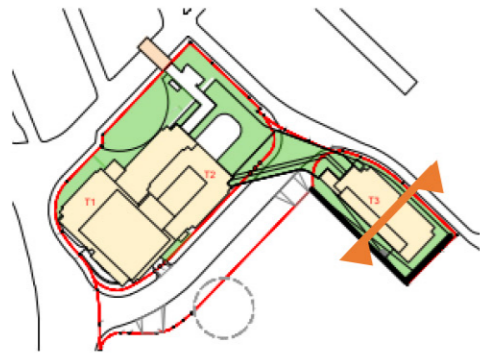


* IMAGE FOR REFERENCE ONLY, SUBJECT TO DETAIL DESIGN

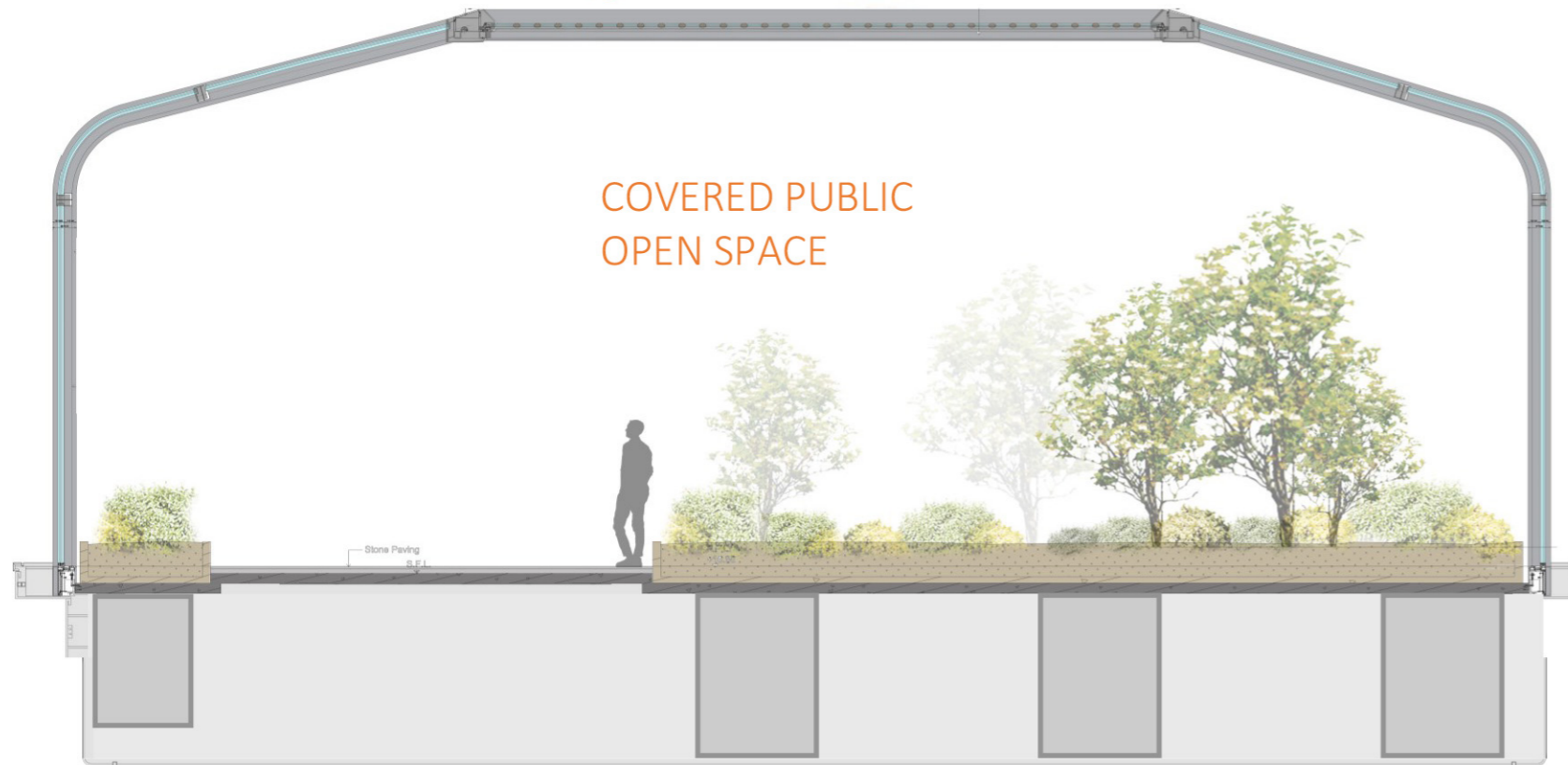


Title	Artist's Impression of Amended Scheme		
Scale	N.T.S.	Date	March 2025
Figure No.	4.9b		

COVERED LANDSCAPE BRIDGE



ENCLOSED LANDSCAPE BRIDGE
 A BRIDGE CONNECTION BETWEEN EDGED BLUE AND EDGED RED SITES TO ENHANCE PEDESTRIAN CONNECTIVITY WHICH IS FULLY ENCLOSED WITH QUALITY LANDSCAPE & GREENERY

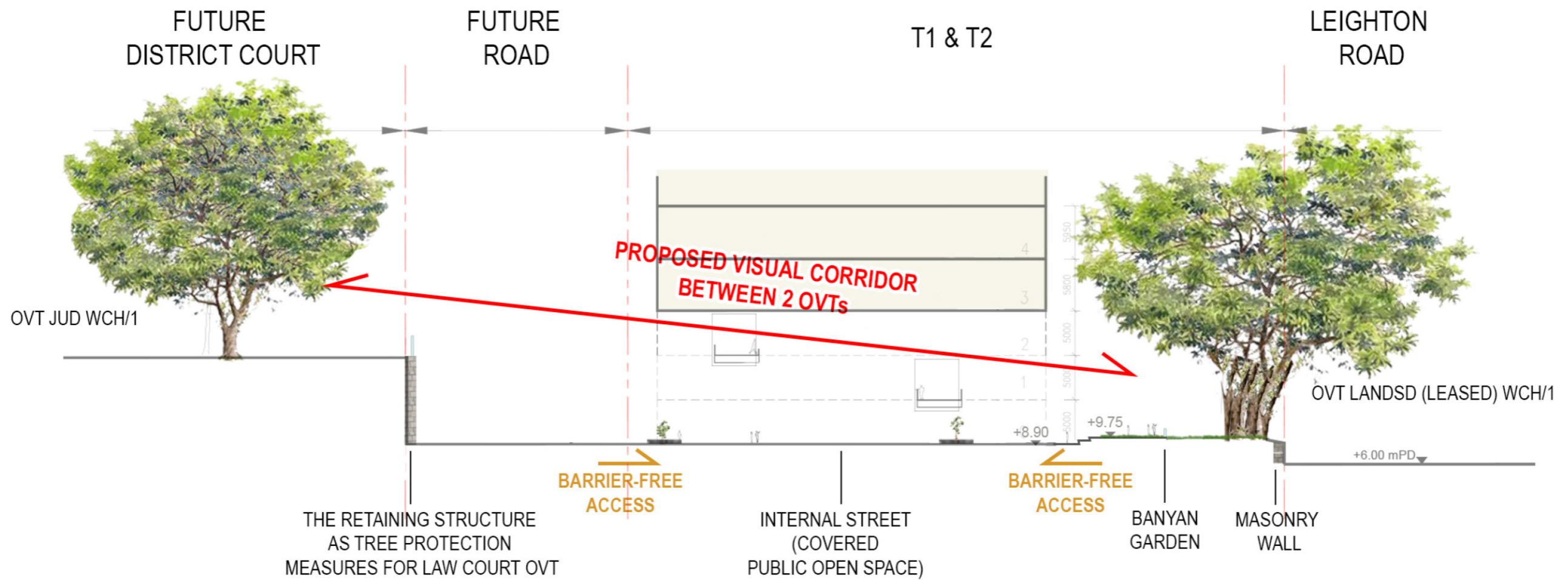


IMAGES FOR REFERENCE ONLY, SUBJECT TO DETAIL DESIGN

Title	Covered Landscape Bridge		
Scale	N.T.S.	Date	March 2025
Figure No.	4.12		

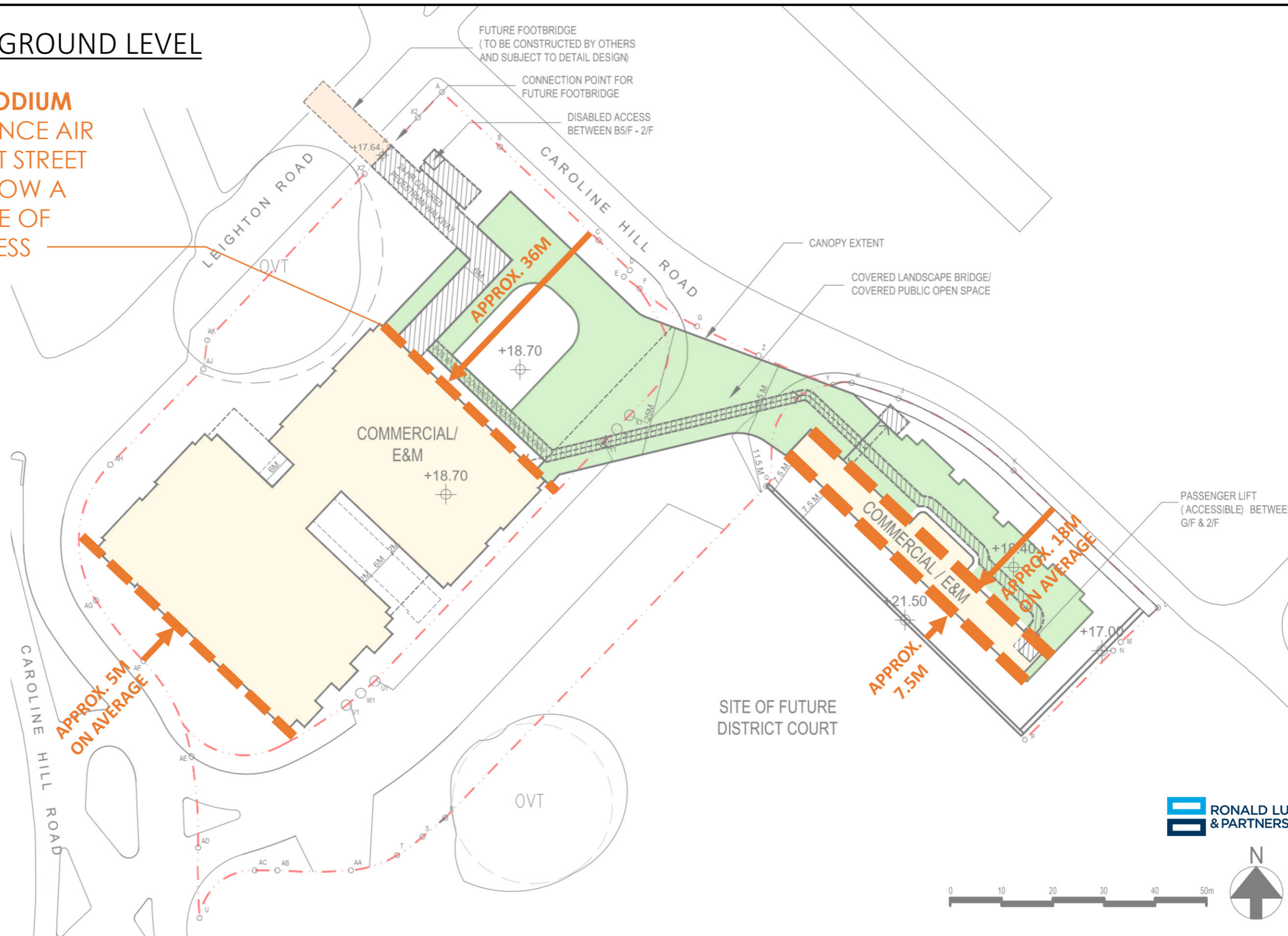


KEY PLAN

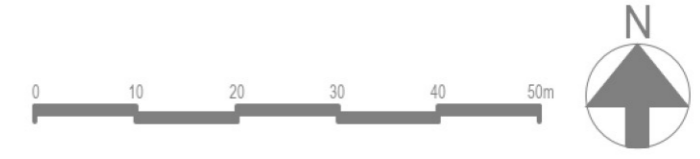


SET-BACK AT GROUND LEVEL

SET-BACK AT PODIUM LEVEL TO ENHANCE AIR VENTILATION AT STREET LEVEL AND ALLOW A HIGHER DEGREE OF VISUAL OPENNESS



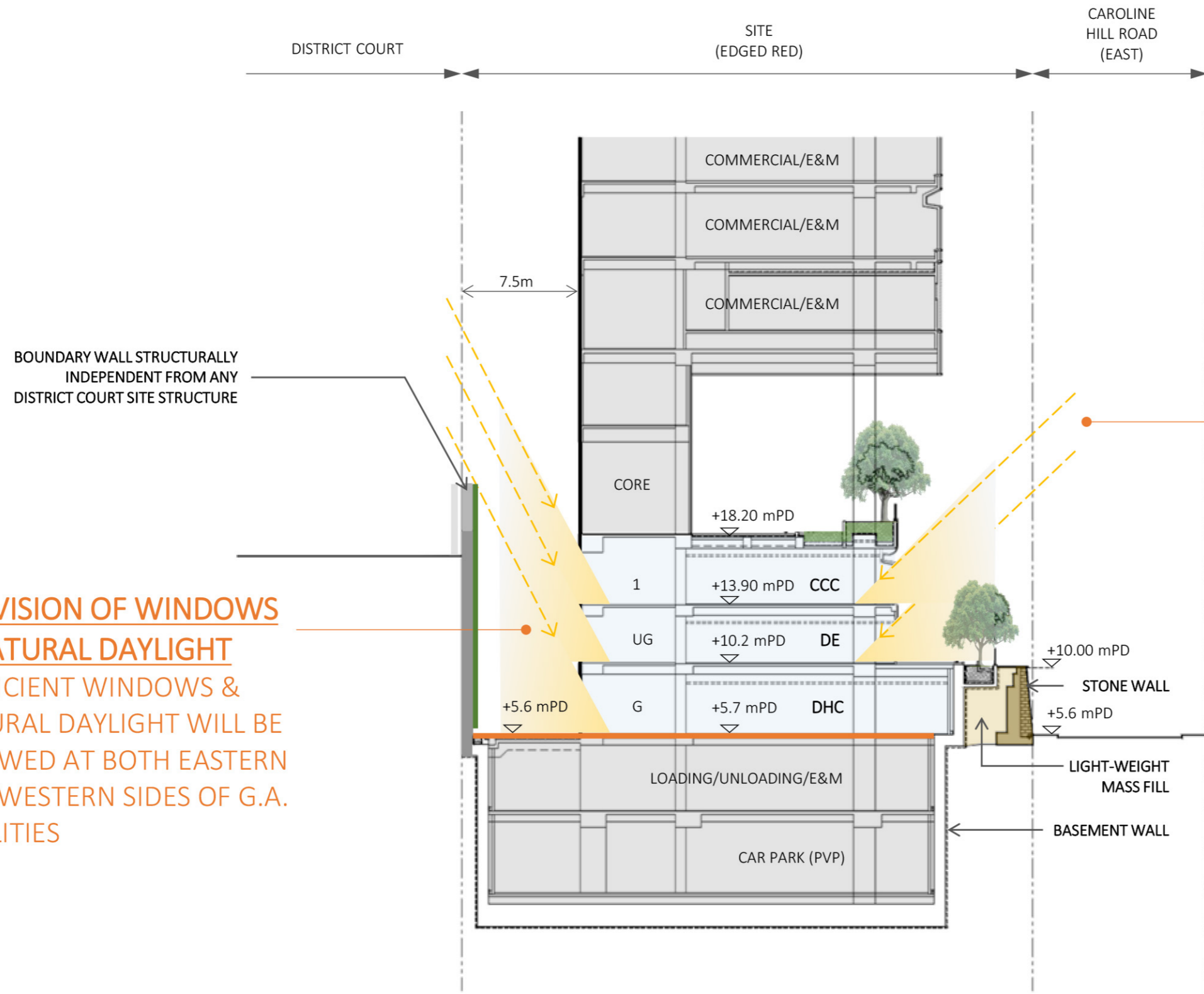
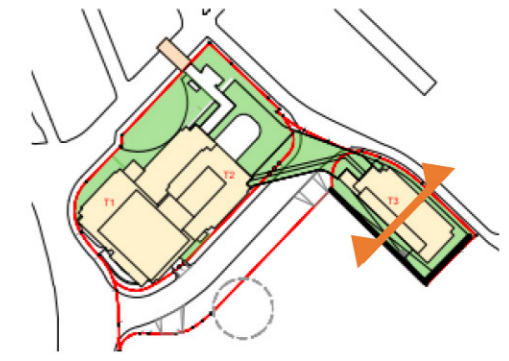
RONALD LU & PARTNERS



Title Setback at G/F and 2/F Levels		
Scale 1:750 @ A3	Date March 2025	Figure No. 4.14b

G.I.C. FACILITIES

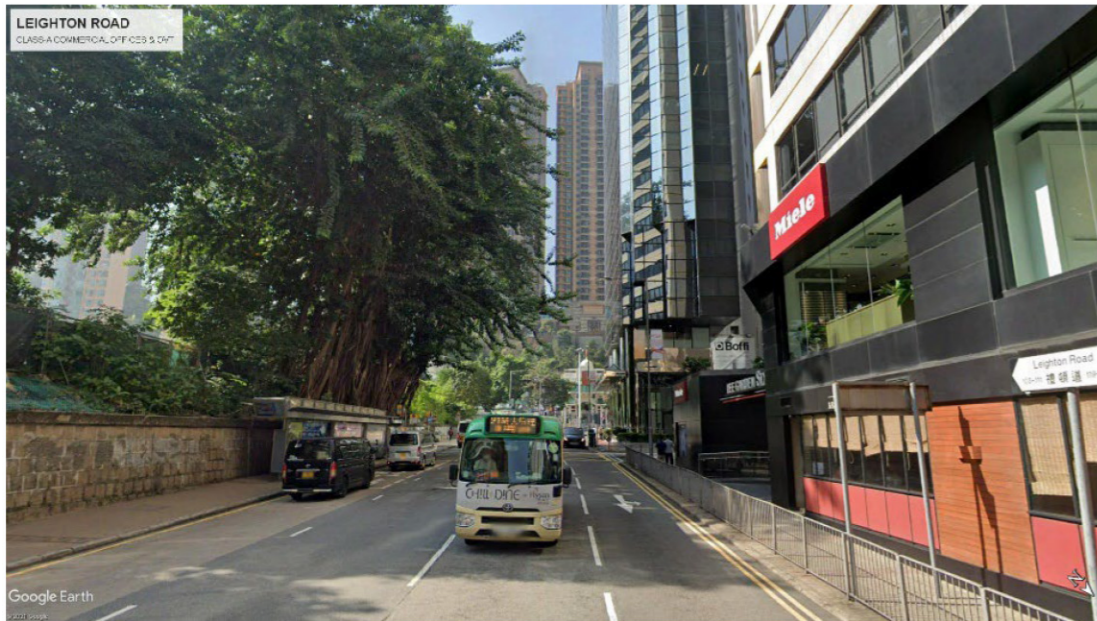
WITH WINDOW FRONTAGE & NATURAL DAYLIGHT



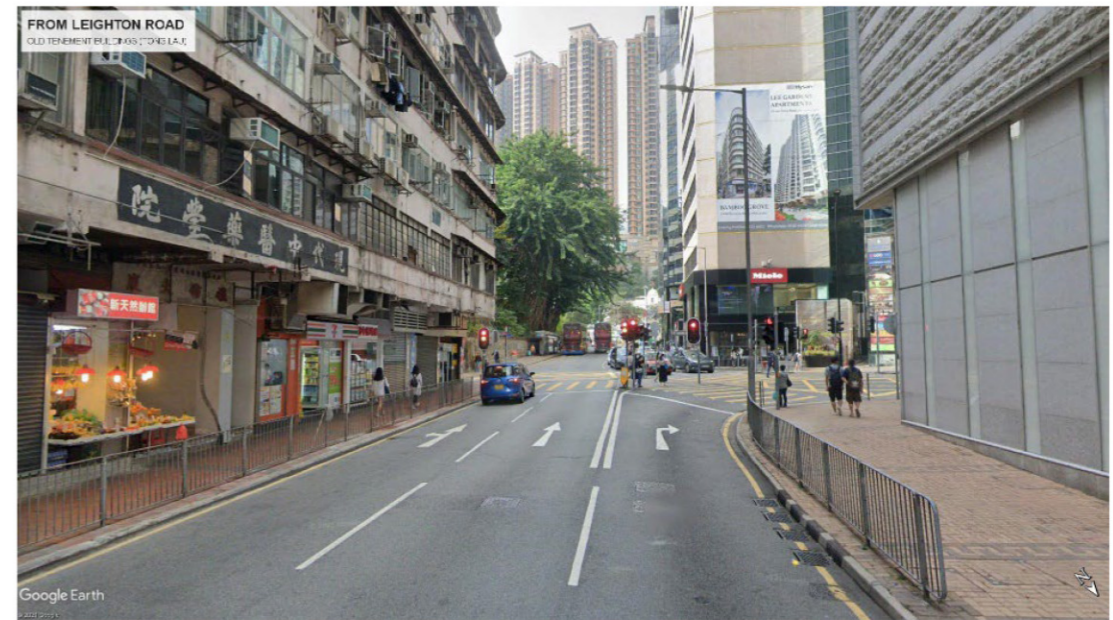
PROVISION OF WINDOWS & NATURAL DAYLIGHT
SUFFICIENT WINDOWS & NATURAL DAYLIGHT WILL BE ALLOWED AT BOTH EASTERN AND WESTERN SIDES OF G.A. FACILITIES

PROVISION OF WINDOWS & NATURAL DAYLIGHT
SUFFICIENT WINDOWS & NATURAL DAYLIGHT WILL BE ALLOWED AT BOTH EASTERN AND WESTERN SIDES OF G.A. FACILITIES





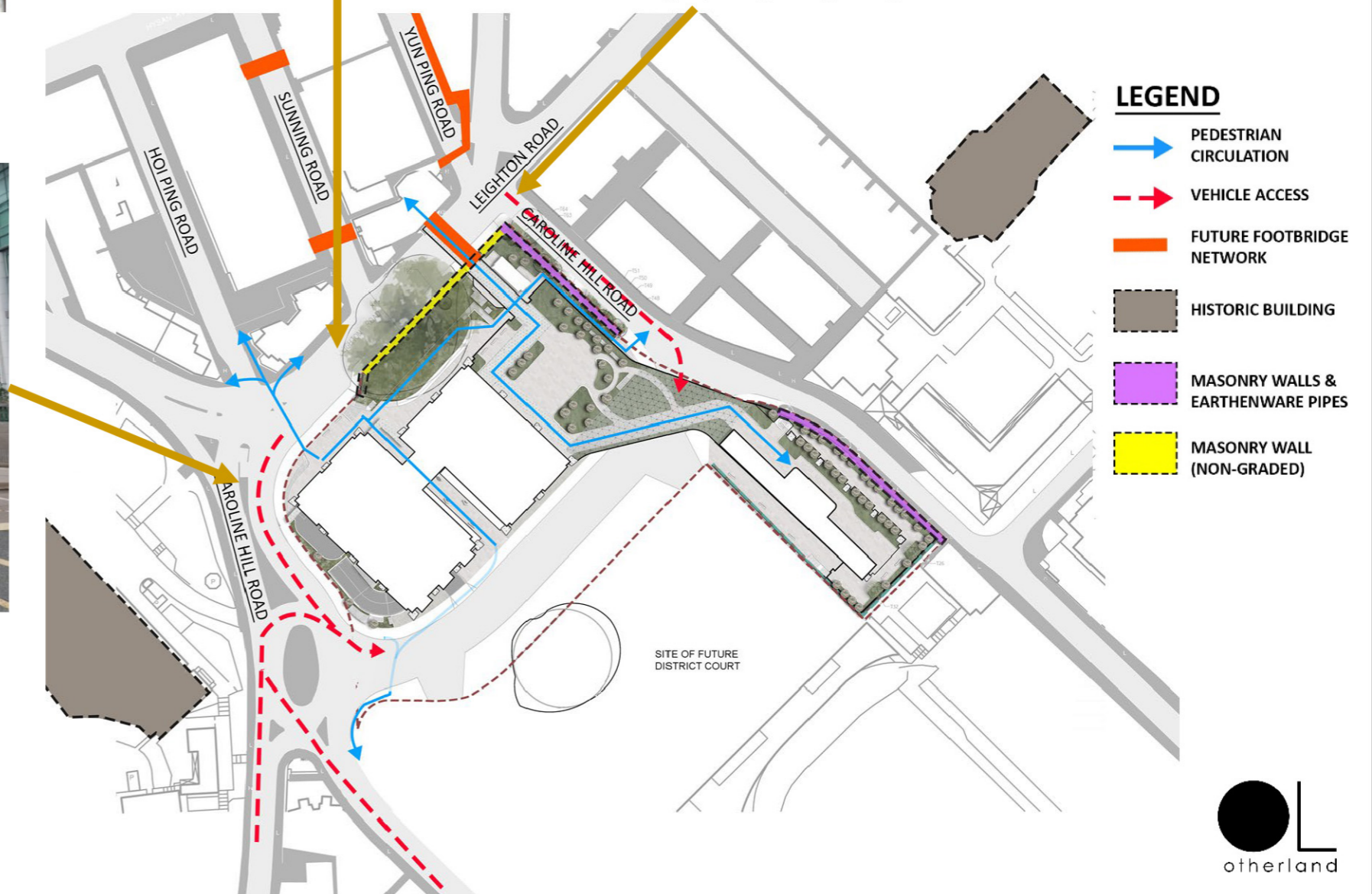
OVT & Grade A Commercial Offices, Leighton Road



Old Tenement Buildings (Tong Lau), Leighton Road



Heritage: Po Leung Kuk, Main Building, Leighton Road



Images reference from: Google Maps

