

Proposed Temporary Open Storage of Construction Material for a Period of 3 Years

at

Lots 2420 RP (Part), 2422 RP (Part), 2442 (Part), 2443 RP (Part) in D.D.129 and Adjoining Government Land, Ha Tsuen, Yuen Long, N.T.

Annex 1 Estimated Traffic Generation

- 1.1 The application site is accessible directly to Lau Fau Shan Road. The application site is intended for temporary open storage of wooden pillars for electricity supply. It is expected that the traffic generation by the proposed development is insignificant because the nature of the proposed development.
- 1.2 Only the medium goods vehicle owned by the applicant can make use of the loading/unloading bay at the application site. No visitors will be allowed to visit the site so that there will be no other vehicle visit the site. The staff will make use of public transport to and from the application site. The estimated average traffic generation and traffic generation rate at peak hours are as follow:

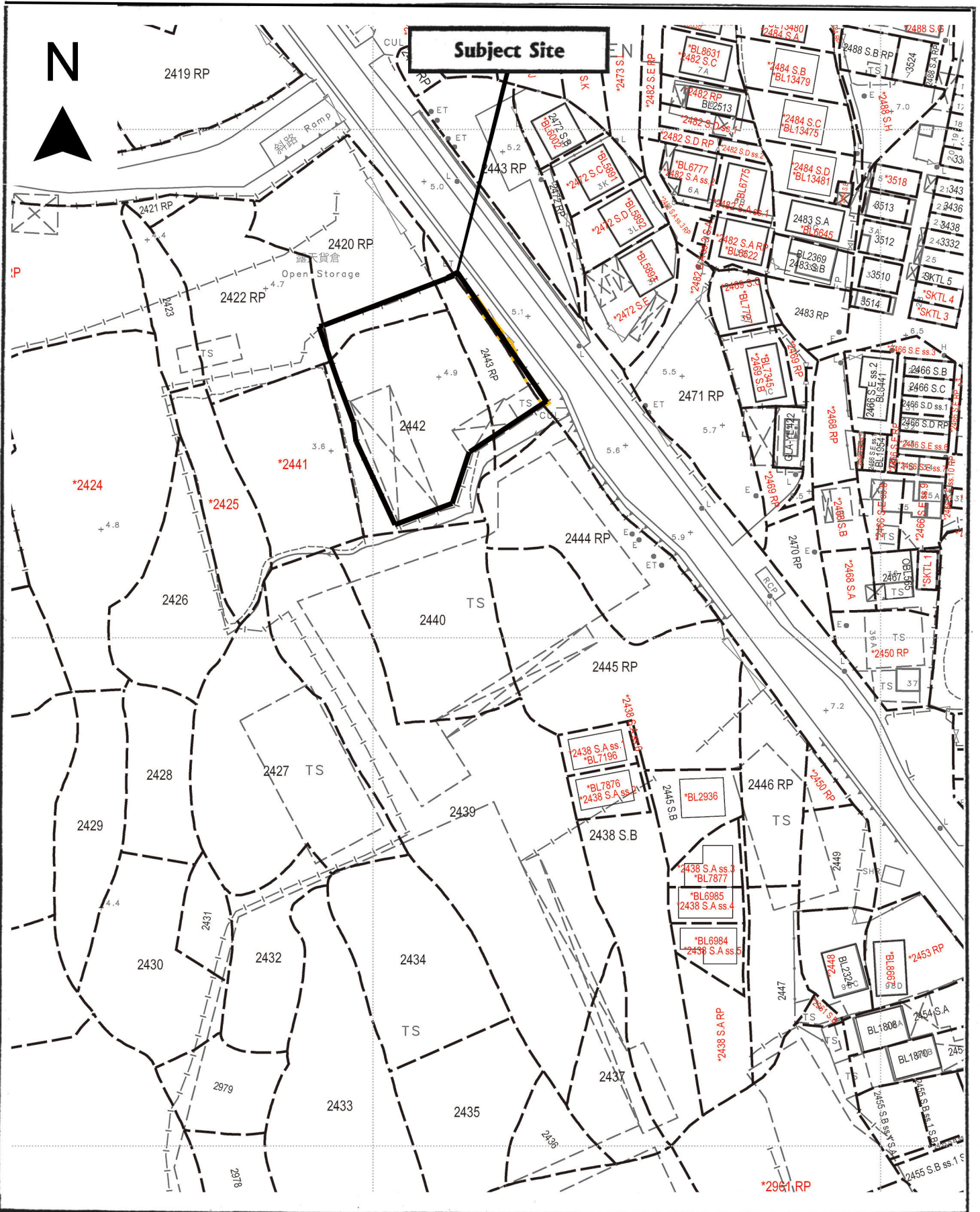
Type of Vehicle	<u>Average Traffic Generation Rate</u> (pcu/hr)	<u>Average Traffic Attraction Rate</u> (pcu/hr)	<u>Traffic Generation Rate at Peak Hours</u> (pcu/hr)	<u>Traffic Attraction Rate at Peak Hours</u> (pcu/hr)
Medium goods vehicle	0.2	0.2	2	0

Note 1: The opening hour of the proposed development is restricted to 9:00 a.m. to 7:00 p.m. from Mondays to Saturdays. No operation will be held on Sundays and public holidays.

Note 2: The pcu of medium goods vehicle is taken as 2 &

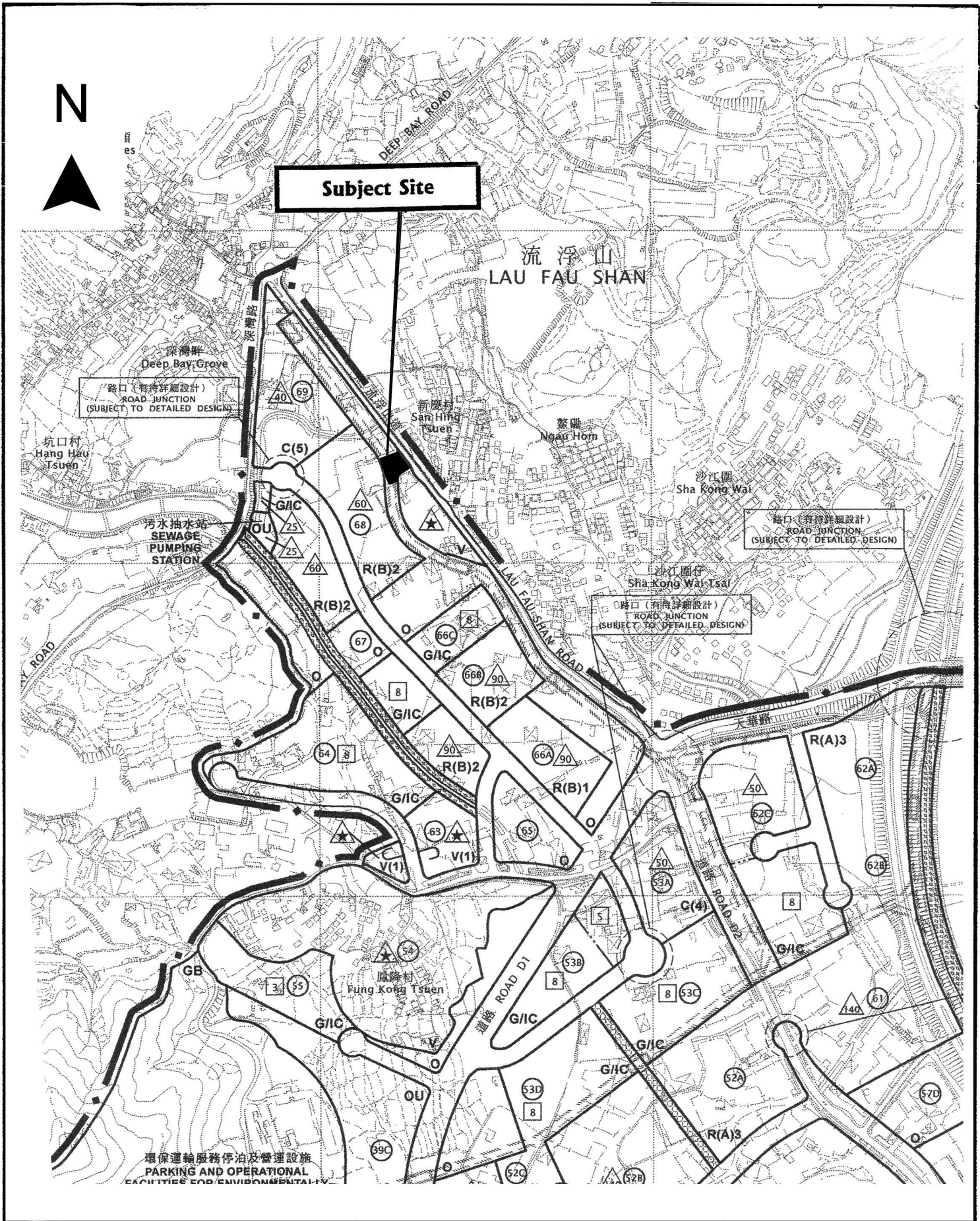
Note 3: Morning peak is defined as 7:00a.m. to 9:00a.m. whereas afternoon peak is defined as 5:00p.m. to 7:00p.m.

- 1.3 In association with the intended purpose, adequate space for manoeuvring will be provided. By virtue of the fact that the application site is directly linked with Yuen Long Highway and Castle Peak Road via Tin Wah Road and Tin Ying Road and these roads provide rapid access to all destinations, the applied use would not aggravate the traffic condition of the surrounding road network.



Subject Site

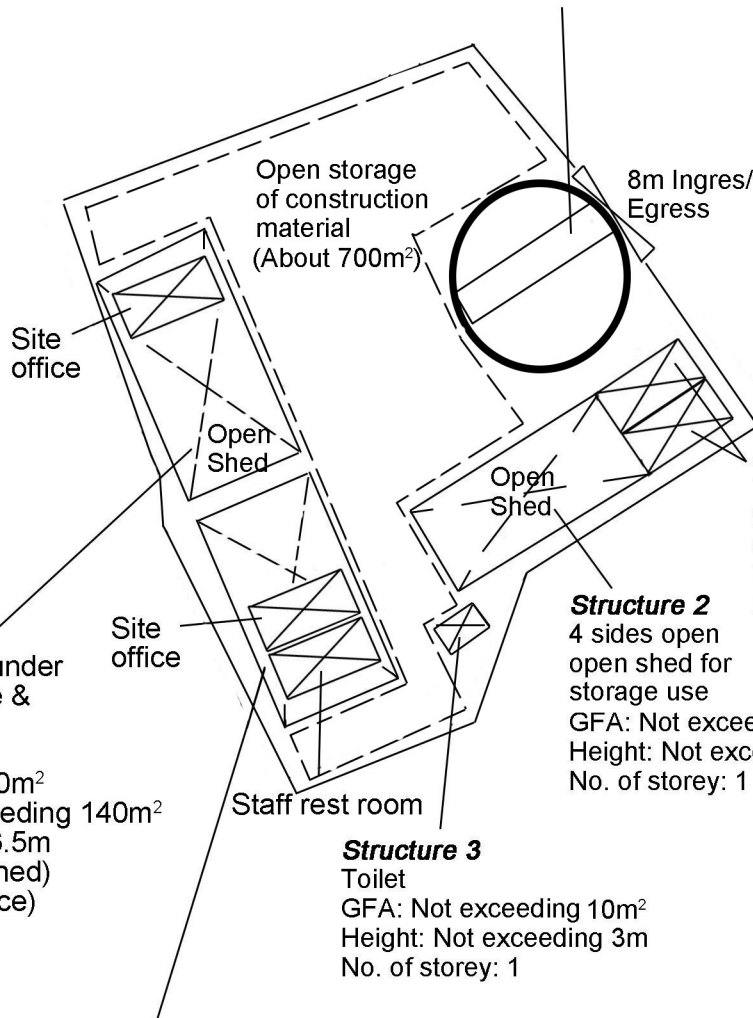
<p>Project 項目名稱: Proposed Temporary Open Storage of Construction Material for a Period of 3 Years at Lots 2420 RP (Part), 2422 RP (Part), 2442 (Part), 2443 RP (Part) in D.D.129 and Adjoining Government Land, Ha Tsuen, Yuen Long, N.T.</p>	<p>Drawing Title 圖名: Site Plan</p>	<p>Remarks 備註:</p>
	<p>Drawing No. 圖號: Figure 1</p>	<p>Scale 比例: 1:1000</p>



<p>Project 項目名稱: Proposed Temporary Open Storage of Construction Material for a Period of 3 Years at Lots 2420 RP (Part), 2422 RP (Part), 2442 (Part), 2443 RP (Part) in D.D.129 and Adjoining Government Land, Ha Tsuen, Yuen Long, N.T.</p>	<p>Drawing Title 圖名: Location Plan</p> <p>Drawing No. 圖號: Figure 2</p>	<p>Remarks 備註:</p> <p>Scale 比例: 1:7500</p>
--	--	---



One 11m x 3.5m loading/
unloading bay for
medium goods vehicle
on mechanical turntable



Structure 4
Stacked up containers under
open shed for office use &
storage use
(4 sides open)
GFA: Not exceeding 160m²
Covered area: Not exceeding 140m²
Height: Not exceeding 6.5m
No. of storey: 1(Open shed)
2 (site office)

Structure 5
Stacked up containers under
open shed for office use &
storage use & staff rest room
(4 sides open)
GFA: Not exceeding 170m²
Covered area: Not exceeding 130m²
Height: Not exceeding 6.5m
No. of storey: 1(Open shed)
1 (Staff rest room)
2 (site office)

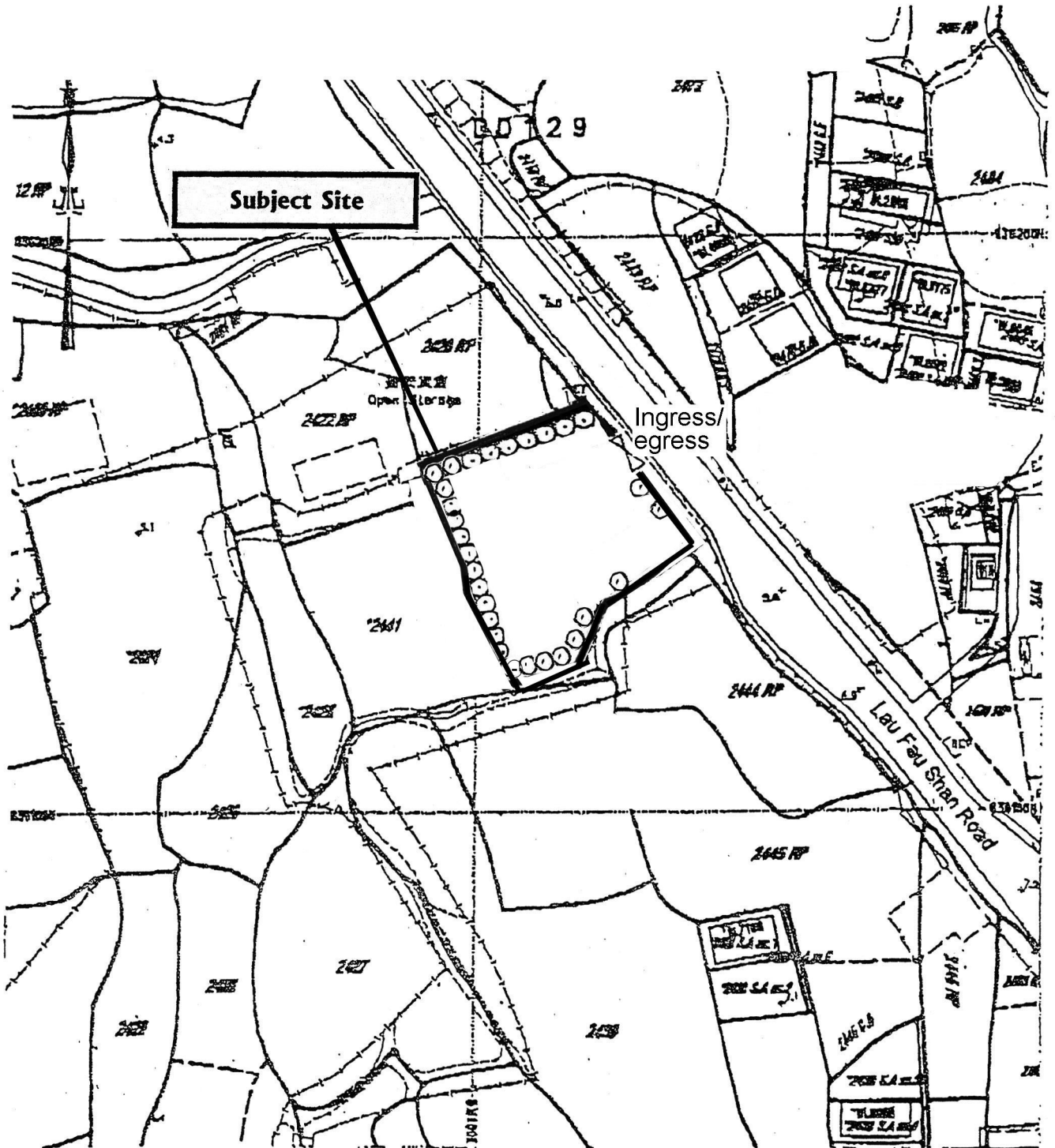
Structure 3
Toilet
GFA: Not exceeding 10m²
Height: Not exceeding 3m
No. of storey: 1

Structure 2
4 sides open
open shed for
storage use
GFA: Not exceeding 90m²
Height: Not exceeding 3.5m
No. of storey: 1

Structure 1
Two converted containers
for guard room use
GFA: Not exceeding 40m²
Height: Not exceeding 3m
No. of storey: 1

Project 項目名稱: Proposed Temporary Open Storage of Construction Material for a Period of 3 Years at Lots 2420 RP (Part), 2422 RP (Part), 2442 (Part), 2443 RP (Part) in D.D.129 and Adjoining Government Land, Ha Tsuen, Yuen Long, N.T.	Drawing Title 圖名: Proposed Layout Plan	Remarks 備註:
	Drawing No. 圖號: Figure 3	Scale 比例: 1:500

Tree	Approximate HEIGHT	Spacing	Quantity
⊙ Existing <i>Ficus microcarpa</i> to be preserved	About 3m to 7m	3m	29



Project 項目名稱:

Proposed Temporary Open Storage of Construction Material for a Period of 3 Years at Lots 2420 RP (Part), 2422 RP (Part), 2442 (Part), 2443 RP (Part) in D.D.129 and Adjoining Government Land, Ha Tsuen, Yuen Long, N.T.

Drawing Title 圖名:

Proposed Landscape & Tree Preservation Plan

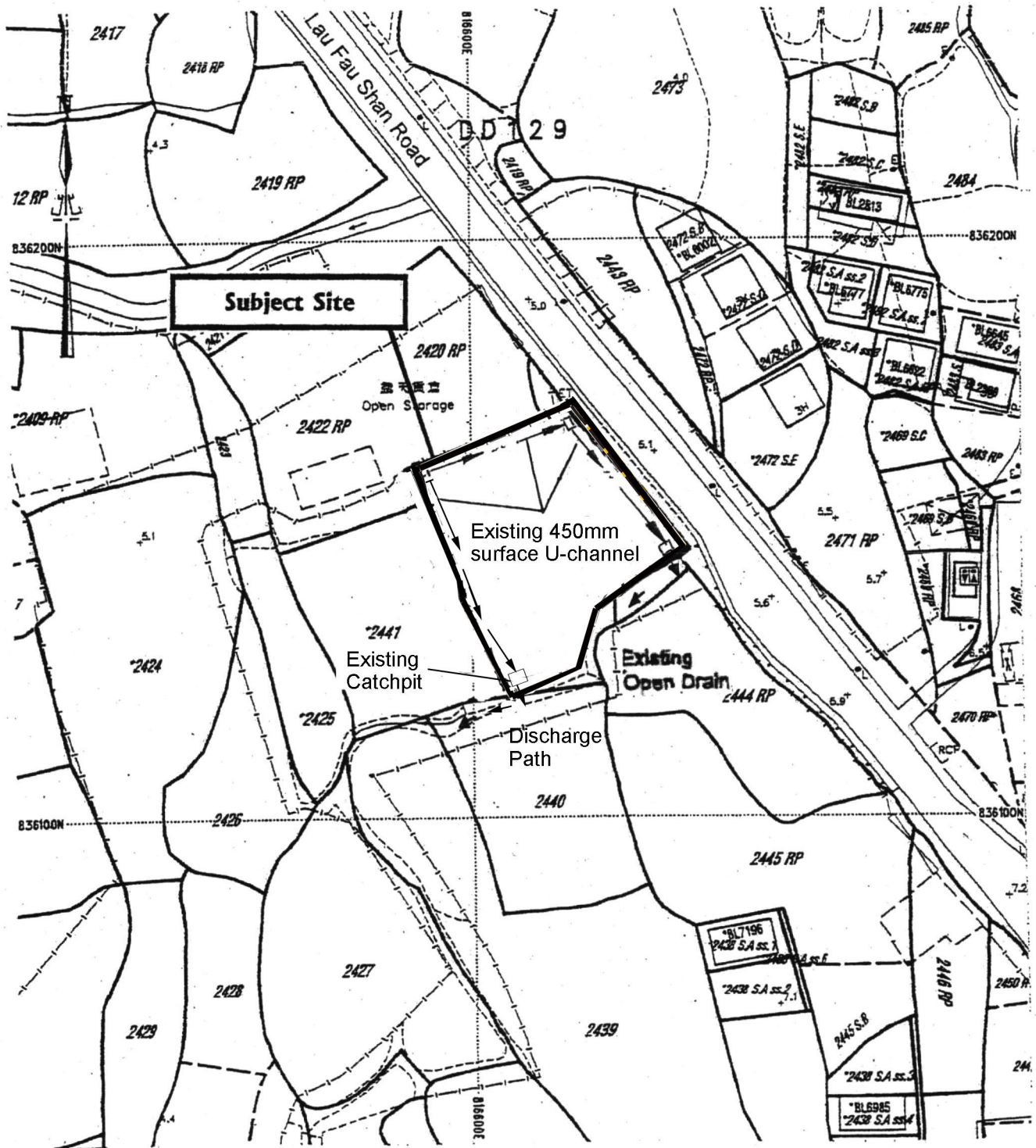
Drawing No. 圖號:

Figure 4

Remarks 備註:

Scale 比例:

1:1000



Project 項目名稱:

Proposed Temporary Open Storage of Construction Material for a Period of 3 Years at Lots 2420 RP (Part), 2422 RP (Part), 2442 (Part), 2443 RP (Part) in D.D.129 and Adjoining Government Land, Ha Tsuen, Yuen Long, N.T.

Drawing Title 圖名:

As-built Drainage Plan

Drawing No. 圖號:

Figure 5

Remarks 備註:

This plan was approved on 2.4.2004 for compliance with approval condition (c) for A/YL-HT/329

Scale 比例:

1:1000