

**FIRE SERVICES NOTES:**

**1. HOSE REEL SYSTEM**

- 1.1 HOSE REEL SHALL BE PROVIDED AT POSITIONS AS INDICATED ON PLANS.
- 1.2 THERE SHALL BE SUFFICIENT HOSE REELS TO ENSURE THAT EVERY PART OF THE BUILDING CAN BE REACHED BY A LENGTH OF NOT MORE THAN 30M OF HOSE REEL TUBING. ONE ACTUATING POINT AND ONE AUDIO WARNING DEVICE TO BE LOCATED AT EACH HR POINT. THE ACTUATING POINT SHOULD INCLUDE FACILITIES FOR THE FIRE PUMP START DEVICE INITIATION.
- 1.3 A MODIFIED HOSE REEL SYSTEM OF 2000 LITRES WATER TANK TO BE PROVIDED FOR THE ENTIRE BUILDING AS INDICATED ON PLAN.
- 1.4 NO FIRE SERVICES INLET TO BE PROVIDED FOR THE MODIFIED HOSE REEL SYSTEM.
- 1.5 TWO FIXED FIRE PUMPS (DUTY/STANDBY) TO BE PROVIDED AT SPR. & FS. PUMP ROOM.
- 1.6 THE HR SYSTEM INSTALLED SHOULD BE IN ACCORDANCE WITH PARA. 5.14 OF THE CODE OF PRACTICE FOR MINIMUM FIRE SERVICE INSTALLATION AND EQUIPMENT 2022.
- 1.7 AN INSTRUCTION PLATE SHALL BE PROVIDED NEXT TO THE BREAK GLASS UNIT FOR OPERATION OF HOSE REEL.

**2. AUTOMATIC SPRINKLER SYSTEM**

- 2.1 AUTOMATIC SPRINKLER SYSTEM SUPPLIED BY A 135,000L SPRINKLER WATER TANK AND HAZARD CLASS OH3 SHALL BE PROVIDED TO THE WAREHOUSE, OFFICE AND STAFF QUARTERS IN ACCORDANCE WITH LPC RULES INCORPORATING BS EN12845 : 2015 AND FSD CIRCULAR LETTER 5/2020. THE SPRINKLER TANK, SPRINKLER PUMP ROOM, SPRINKLER INLET AND SPRINKLER CONTROL VALVE GROUP SHALL BE CLEARLY MARKED ON PLANS.
- 2.2 THE CLASSIFICATION OF THE AUTOMATIC SPRINKLER INSTALLATION TO BE ORDINARY HAZARD GROUP 3.
- 2.3 ONE NUMBER 135,000 LITRES SPRINKLER WATER TANK TO BE PROVIDED AS INDICATED ON PLANS.
- 2.4 ALL INSTALLED SPRINKLER SHOULD BE PENDENT TYPE AND THE TEMPERATURE RATING OF SPRINKLER HEAD SHALL BE 68 °C UNLESS OTHERWISE SPECIFIED.
- 2.5 SPRINKLER CONTROL VALVE SET AND SPRINKLER INLET TO BE PROVIDED AS INDICATED ON PLANS.
- 2.6 ALL SPRINKLER PIPE SIZE SHOULD BE ø32mm UNLESS SPECIFY.
- 2.7 TYPE OF STORAGE METHOD FOR THE BUILDING IS AS FOLLOWS:  
(A) STORAGE CATEGORY : CATEGORY (I)  
(B) STORAGE HEIGHT : NOT EXCEEDING 4M  
(C) STORAGE : ST1
- 2.8 THE MAXIMUM STORAGE AREA SHALL BE 50m<sup>2</sup> FOR ANY SINGLE BLOCK WITH NO LESS THAN 2.4M CLEARANCE AROUND THE BLOCK.

**3. FIRE ALARM SYSTEM**

- 3.1 FIRE ALARM SYSTEM SHALL BE PROVIDED THROUGHOUT THE ENTIRE BUILDING IN ACCORDANCE WITH BS 5839-1 : 2017 AND FSD CIRCULAR LETTER NO.6/2021. ONE ACTUATING POINT AND ONE AUDIO WARNING DEVICE SHOULD BE LOCATED AT EACH HOSE REEL POINT. THE ACTUATION POINT SHOULD INCLUDE FACILITIES FOR FIRE PUMP START AND AUDIO / VISUAL WARNING DEVICE INITIATION.
- 3.2 AN ADDRESSABLE TYPE FIRE ALARM PANEL TO BE PROVIDED AND LOCATED INSIDE G/F SPR. & F.S. PUMP ROOM.

**4. MISCELLANEOUS F.S. INSTALLATION**

- 4.1 PORTABLE FIRE EXTINGUISHER WITH SPECIFIED TYPE AND CAPACITY TO BE PROVIDED AT LOCATIONS AS INDICATED ON PLANS.
  - 4.2 SUFFICIENT EMERGENCY LIGHTING SHALL BE PROVIDED THROUGHOUT THE ENTIRE BUILDINGS/STRUCTURES IN ACCORDANCE WITH BS 5266-1:2016 AND BS EN 1838:2013 AND FSD CIRCULAR LETTER NO. 4/2021.
  - 4.3 SUFFICIENT DIRECTIONAL AND EXIT SIGN SHALL BE PROVIDED IN ACCORDANCE WITH BS 5266: PART 1 AND FSD CIRCULAR LETTER 5/2008.
  - 4.4 NO EMERGENCY GENERATOR TO BE PROVIDED FOR SERVING THE EMERGENCY POWER. DUPLICATED POWER SUPPLIES FOR ALL FIRE SERVICES INSTALLATIONS COMPRISING A CABLE CONNECTED FROM ELECTRICITY MAINS DIRECTLY BEFORE THE MAIN SWITCH.
  - 4.5 WHEN A VENTILATION/AIR CONDITIONING CONTROL IS PROVIDED, IT SHALL STOP MECHANICALLY INDUCED AIR MOVEMENT WITHIN A DESIGNATED FIR COMPARTMENT.
  - 4.6 NO DYNAMIC SMOKE EXTRACTION SYSTEM SHALL BE PROVIDED SINCE EITHER THERE BE NO FIRE COMPARTMENT EXCEEDING 7000 CUBIC METRES OR THE AGGREGATE AREA OF OPENABLE WINDOWS OF THE RESPECTIVE COMPARTMENT EXCEEDS 6.25% OF THE FLOOR AREA OF THAT COMPARTMENT.
- 5. NOTES FOR WATERWORKS**
- 5.1 ALL EQUIPMENT USED IN THE INSTALLATION SHALL BE OF THE APPROVED TYPE AND APPROVED MAKE BY THE H.K.F.S.D.
  - 5.2 ALL OVERFLOW PIPE OF WATER TANKS SHALL BE DISCHARGED IN A CONSPICUOUS POSITION TO THE COMMUNAL AREA WHERE IT IS EASILY VISIBLE AND ACCESSIBLE BY THE OCCUPANTS.
  - 5.3 ALL ABOVE GROUND PIPEWORKS UP TO INCLUDING ø150mm SHALL BE GALVANIZED MILD STEEL (G.M.S.) PIPES TO BS 1387 MEDIUM GRADE AND JOINTED WITH SCREWED FITTINGS, SCREWED FLANGES, OR SCREWED UNIONS.
  - 5.4 ALL UNDERGROUND PIPEWORKS UP TO AND INCLUDING ø150mm SHALL BE GALVANIZED MILD STEEL (G.M.S.) PIPE TO BS 1387 HEAVY GRADE AND JOINTED WITH SCREWED FITTINGS, SCREWED FLANGES, OR SCREWED UNIONS.
  - 5.5 ALL PIPEWORKS FROM ø150mm UPWARDS SHALL BE DUCTILE IRON (D.I) TO BS 4722 AND JOINTED WITH FLANGE AND FLANGED FITTINGS.
  - 5.6 ALL COPPER ALLOY GATE VALVE SHALL CONFORM TO BS 5154 AND CHECK VALVES CONFORM TO BS 5153.
  - 5.7 ALL BALL FLOAT VALVES SHALL CONFORM TO BS 1221, PART 1.
  - 5.8 NO WATER PIPE SHALL BE EMBEDDED WITHIN LOAD BEARING STRUCTURAL ELEMENTS SUCH AS COLUMNS, BEAMS AND SLABS IN LONGITUDINAL DIRECTION.

**DRAWING LIST**

DRAWING NO	DESCRIPTION
EP-10343-FS01	FS NOTES, LEGEND, ABBREVIATIONS, DRAWING LIST AND LOCATION BLOCK PLAN
EP-10343-FS02	PROPOSED FSI LAYOUT PLAN
EP-10343-GBP01	GROUND FLOOR PLAN & WINDOW CALCULATION

**LEGEND (FOR SCHEMATIC DIAGRAM)**

- HOSE REEL W/ LOCKABLE GLASS FRONTED NOZZLE BOX, STRIKER, C/W FIRE ALARM BELL & BREAK GLASS UNIT
- 150mm FIRE ALARM BELL
- BREAK GLASS UNIT
- GATE VALVE
- NON RETURN VALVE
- BALL FLOAT VALVE
- PRESSURE SWITCH
- PRESSURE GAUGE WITH COCK
- AUTOMATIC AIR VENT WITH COCK
- HOSE REEL PIPE
- LEVEL SWITCH (HIGH LEVEL SIGNAL & LOW LEVEL SIGNAL)
- FLEXIBLE CONNECTOR
- CHECK METER POSITION
- PLUG
- Y-STRAINER

**LEGEND (FOR LAYOUT PLAN)**

- HOSE REEL W/ LOCKABLE GLASS FRONTED NOZZLE BOX, STRIKER, C/W FIRE ALARM BELL & BREAK GLASS UNIT
- 150mm FIRE ALARM BELL
- BREAK GLASS UNIT
- GATE VALVE
- NON RETURN VALVE
- BALL FLOAT VALVE
- PRESSURE SWITCH
- HOSE REEL PIPE
- CHECK METER POSITION
- 4KG DRY POWDER TYPE FIRE EXTINGUISHER
- 5KG CO2 TYPE FIRE EXTINGUISHER
- SAND BUCKET
- PUMP
- EMERGENCY LIGHTING
- EXIT SIGN
- MANUAL TYPE FIRE ALARM PANEL
- PUMP PANEL WITH WATERPROOF ENCLOSURE

REV	DESCRIPTION	DATE	BY
G	FSD SUBMISSION	04-08-2024	WC
F	FSD SUBMISSION	31-12-2023	WC
E	WSD SUBMISSION	16-09-2022	JN
D	WSD SUBMISSION	02-04-2022	JN
C	WSD SUBMISSION	21-12-2020	JN
B	FSD COMMENT	15-12-2020	CAD
A	FSD SUBMISSION	01-02-2018	BY

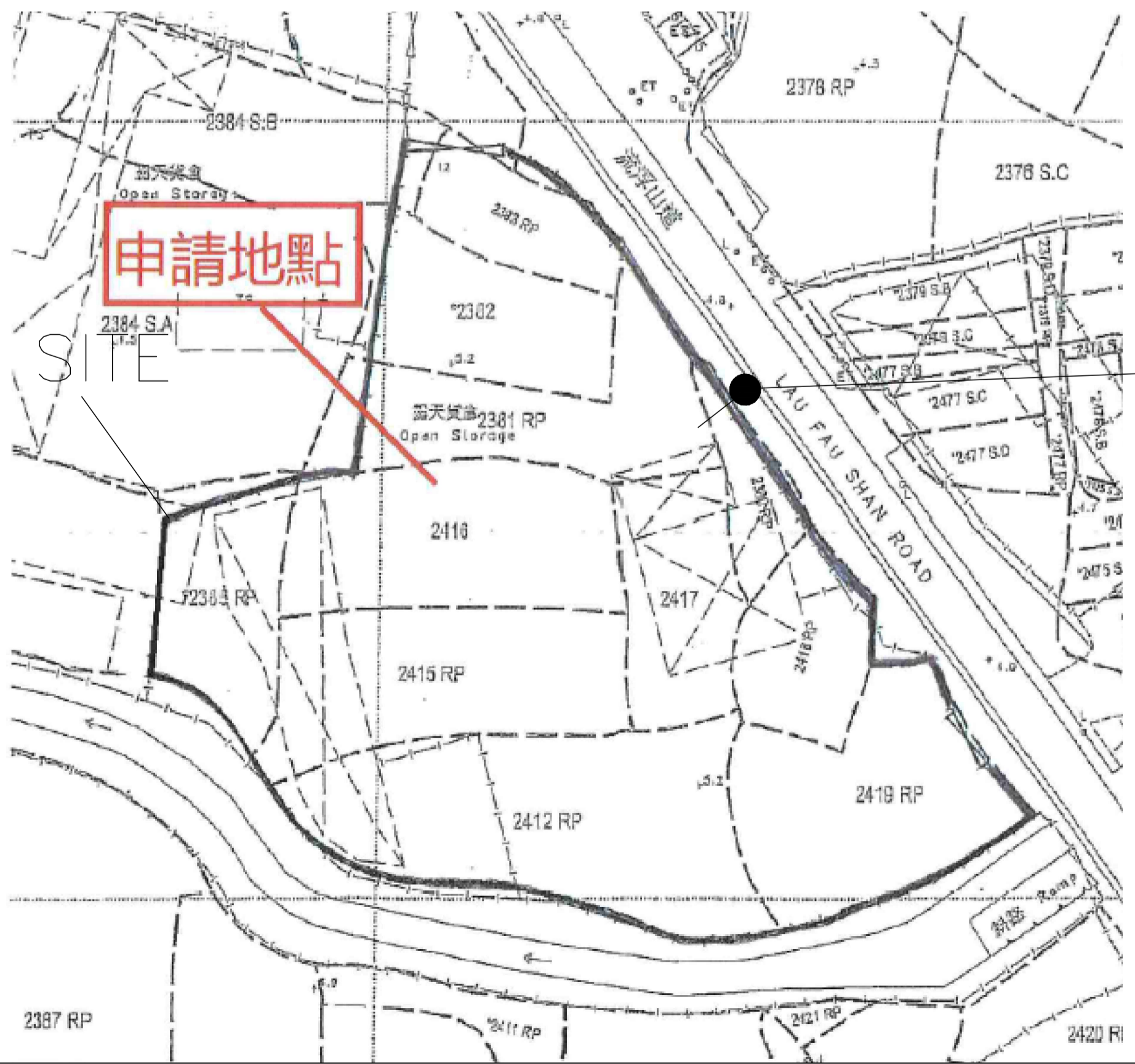
FSI CONTRACTOR  
**East Power Engineering Limited**



**PROJECT**  
PROPOSED TEMPORARY WAREHOUSE WITH ANCILLARY SITE OFFICE FOR A PERIOD OF 3 YEARS AT LOTS 2187RP (Part), 2380 RP(PART), 2381 RP(PART), 2382(PART), 2383 RP(PART), 2384 S.B (PART), 2385 RP(PART), 2412 RP, 2415 RP, 2416 (PART), 2417, 2418 RP(PART) AND 2419 RP(PART) IN D.D. 129 AND ADJOINING GOVERNMENT LAND, HA TSUEN, YUEN LONG.

**DRAWING TITLE**  
PROPOSED FSI LAYOUT PLAN

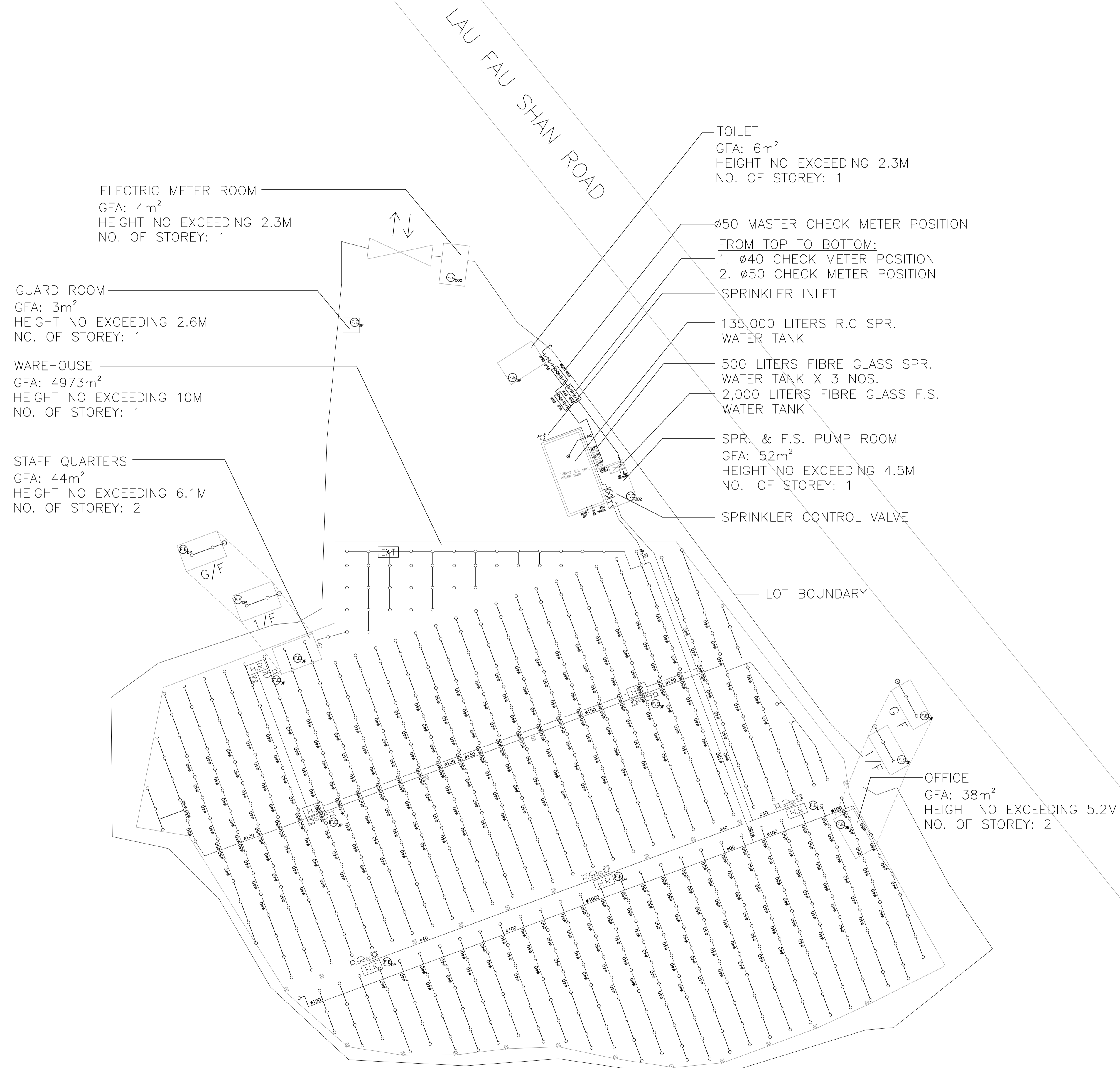
	INITIAL	DESIGNATION	DATE
DRAWN BY	HY	Eng.T	01-02-2018
DESIGNED BY	HY	Eng.T	01-02-2018
CHECKED BY	CM	PM	01-02-2018
APPROVED BY	-	-	-
PROJECT NO.	10343		
PAPER SIZE	A3	PLOT SCALE	1 : 1
DRAWING NO.	EP-10343-FS01		
SCALE	N.T.S	REVISION	G



PROJECT SITE

PROPOSED CONNECTION POINT TO WSD MAIN

LOCATION PLAN (1:1000)



ELECTRIC METER ROOM  
 GFA: 4m<sup>2</sup>  
 HEIGHT NO EXCEEDING 2.3M  
 NO. OF STOREY: 1

GUARD ROOM  
 GFA: 3m<sup>2</sup>  
 HEIGHT NO EXCEEDING 2.6M  
 NO. OF STOREY: 1

WAREHOUSE  
 GFA: 4973m<sup>2</sup>  
 HEIGHT NO EXCEEDING 10M  
 NO. OF STOREY: 1

STAFF QUARTERS  
 GFA: 44m<sup>2</sup>  
 HEIGHT NO EXCEEDING 6.1M  
 NO. OF STOREY: 2

TOILET  
 GFA: 6m<sup>2</sup>  
 HEIGHT NO EXCEEDING 2.3M  
 NO. OF STOREY: 1

Ø50 MASTER CHECK METER POSITION  
 FROM TOP TO BOTTOM:  
 1. Ø40 CHECK METER POSITION  
 2. Ø50 CHECK METER POSITION

SPRINKLER INLET

135,000 LITERS R.C SPR.  
 WATER TANK

500 LITERS FIBRE GLASS SPR.  
 WATER TANK X 3 NOS.  
 2,000 LITERS FIBRE GLASS F.S.  
 WATER TANK

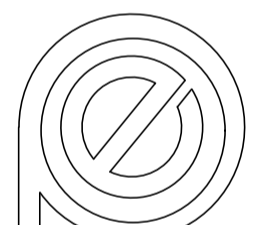
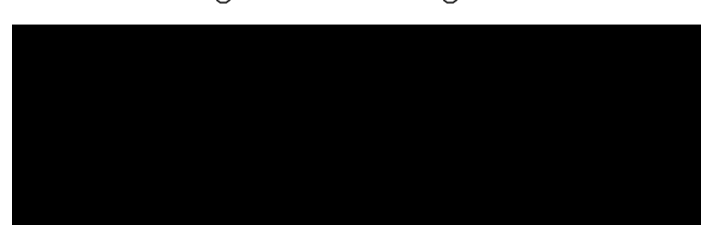
SPR. & F.S. PUMP ROOM  
 GFA: 52m<sup>2</sup>  
 HEIGHT NO EXCEEDING 4.5M  
 NO. OF STOREY: 1

SPRINKLER CONTROL VALVE

OFFICE  
 GFA: 38m<sup>2</sup>  
 HEIGHT NO EXCEEDING 5.2M  
 NO. OF STOREY: 2

REV	DESCRIPTION	DATE	BY
G	FSD SUBMISSION	04-08-2024	WC
F	FSD SUBMISSION	31-12-2023	WC
E	WSD SUBMISSION	16-09-2022	JN
D	WSD SUBMISSION	02-04-2022	JN
C	WSD SUBMISSION	21-12-2020	JN
B	FSD COMMENT	15-12-2020	CAD
A	FSD SUBMISSION	01-02-2018	BY

FSI CONTRACTOR  
**East Power Engineering Limited**

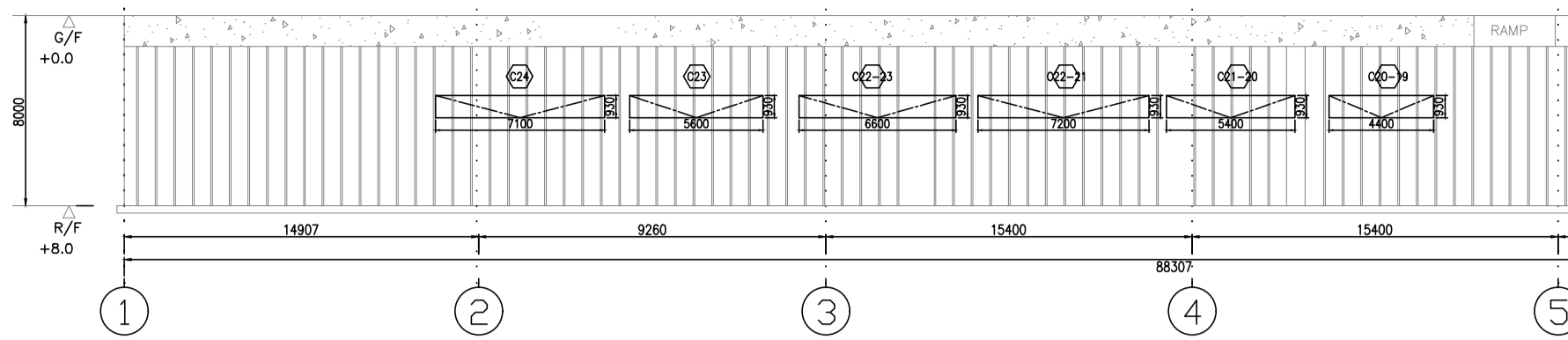



PROJECT  
 PROPOSED TEMPORARY WAREHOUSE WITH ANCILLARY  
 SITE OFFICE FOR A PERIOD OF 3 YEARS AT LOTS  
 2187RP (Part), 2380 RP(PART), 2381 RP(PART),  
 2382(PART), 2383 RP(PART), 2384 S.B (PART), 2385  
 RP(PART), 2412 RP, 2415 RP, 2416 (PART), 2417,  
 2418 RP(PART) AND 2419 RP(PART) IN D.D. 129 AND  
 ADJOINING GOVERNMENT LAND, HA TSUEN, YUEN LONG.

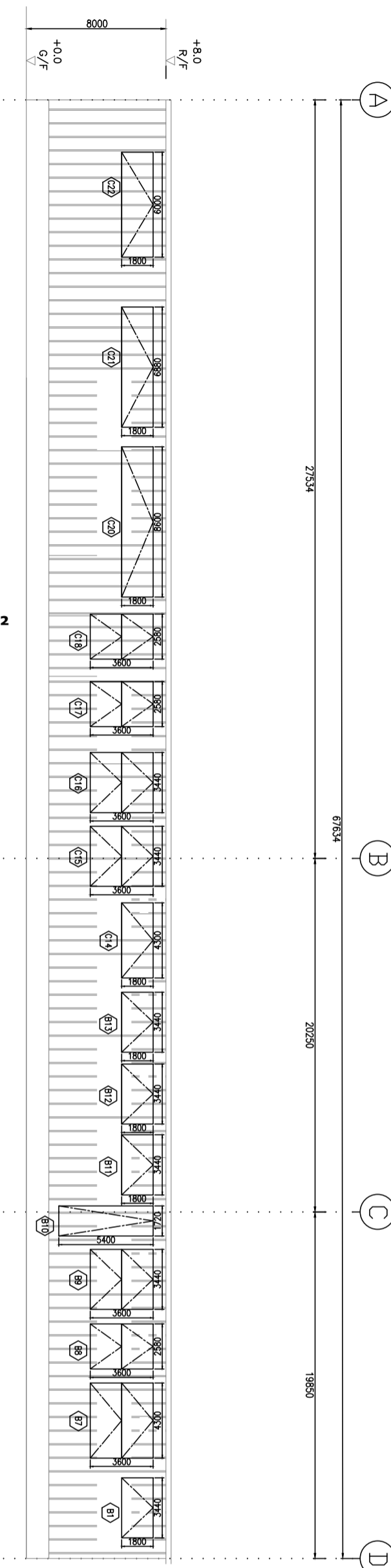
DRAWING TITLE  
 PROPOSED FSI LAYOUT PLAN

	INITIAL	DESIGNATION	DATE
DRAWN BY	HY	Eng.T	01-02-2018
DESIGNED BY	HY	Eng.T	01-02-2018
CHECKED BY	CM	PM	01-02-2018
APPROVED BY	-	-	-
PROJECT NO.	10343		
PAPER SIZE	A3	PLOT SCALE	1 : 1
DRAWING NO.	EP-10343-FS02		
SCALE	1 : 600	REVISION	G

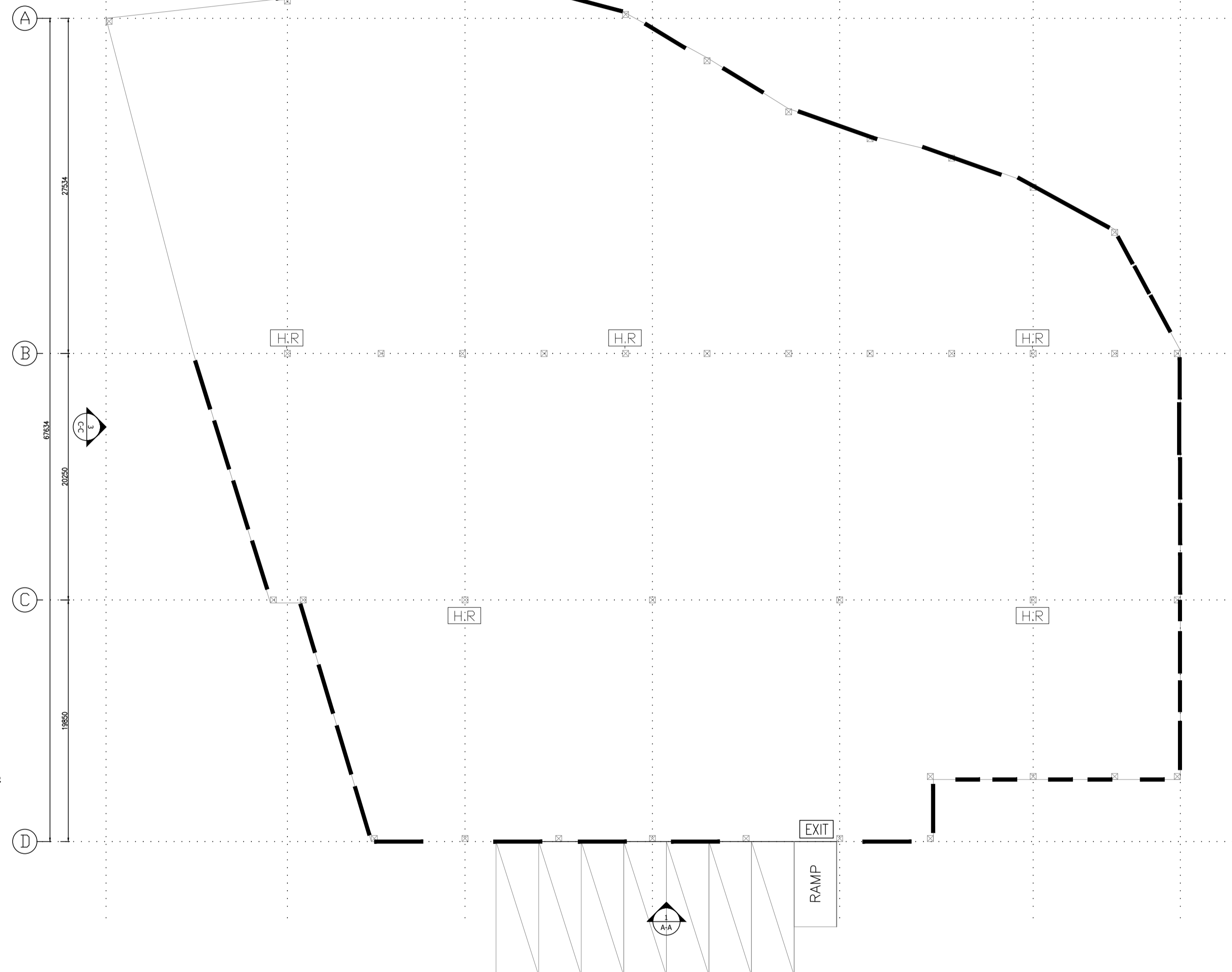
ELEVATION D:  
 C20-19, 4.092M<sup>2</sup>  
 C21-20, 5.22M<sup>2</sup>  
 C22-21, 6.696M<sup>2</sup>  
 C22-23, 6.138M<sup>2</sup>  
 C23, 5.208M<sup>2</sup>  
 C24, 6.603M<sup>2</sup>  
**TOTAL: 33.957M<sup>2</sup>**



ELEVATION B:  
 B22, 10.8M<sup>2</sup>  
 B21, 12.384M<sup>2</sup>  
 B20, 15.48M<sup>2</sup>  
 B18, 9.288M<sup>2</sup>  
 B17, 9.288M<sup>2</sup>  
 B16, 12.384M<sup>2</sup>  
 B15, 12.384M<sup>2</sup>  
 B14, 7.74M<sup>2</sup>  
 B13, 6.192M<sup>2</sup>  
 B12, 6.192M<sup>2</sup>  
 B11, 6.192M<sup>2</sup>  
 B10, 9.288M<sup>2</sup>  
 B9, 12.384M<sup>2</sup>  
 B8, 9.288M<sup>2</sup>  
 B7, 15.48M<sup>2</sup>  
 B1, 6.192M<sup>2</sup>  
**TOTAL: 160.95M<sup>2</sup>**



ELEVATION C:  
 A13, 4.644M<sup>2</sup>  
 A12, 4.644M<sup>2</sup>  
 A11, 4.644M<sup>2</sup>  
 A10, 3.096M<sup>2</sup>  
 A9, 3.096M<sup>2</sup>  
 B8, 4.644M<sup>2</sup>  
 B7, 4.644M<sup>2</sup>  
 B6, 4.644M<sup>2</sup>  
**TOTAL: 34.05M<sup>2</sup>**

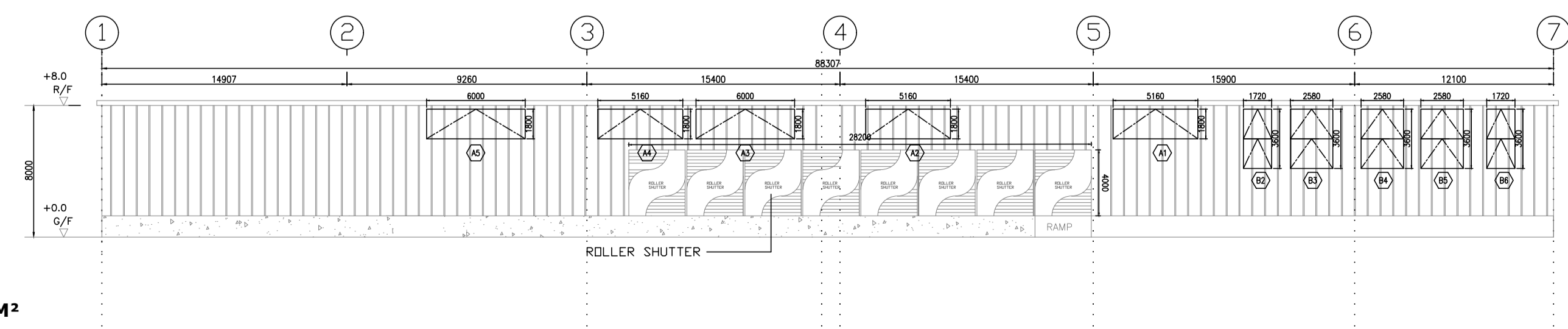


ELEVATION PLAN (ELV C-C)

ELEVATION PLAN (ELV B-B)

OPENABLE WINDOW AREA CALCULATION UNDER F.S.D. REQUIREMENT FOR COMPARTMENT EXCEEDING 7000m <sup>3</sup>				
LOCATION	USABLE FL. AREA (m <sup>2</sup> ) PER FLOOR	OPENABLE WINDOW AREA REQUIRED	OPENABLE WINDOW AREA PROVIDED	
WAREHOUSE	4973	4973 X 6.25% = 310.81	REFER TO ELEVATION-(A-A) = 89.71 REFER TO ELEVATION-(B-B) = 160.95 REFER TO ELEVATION-(C-C) = 34.05 REFER TO ELEVATION-(D-D) = 33.957	TOTAL = 318.66 > 310.81

ELEVATION A:  
 A5, 10.8M<sup>2</sup>  
 A4, 9.288M<sup>2</sup>  
 A3, 10.8M<sup>2</sup>  
 A2, 9.288M<sup>2</sup>  
 A1, 9.288M<sup>2</sup>  
 B2, 6.192M<sup>2</sup>  
 B3, 9.288M<sup>2</sup>  
 B4, 9.288M<sup>2</sup>  
 B5, 9.288M<sup>2</sup>  
 B6, 6.192M<sup>2</sup>  
**TOTAL: 89.71M<sup>2</sup>**



ELEVATION PLAN (ELV A-A)

LEGEND



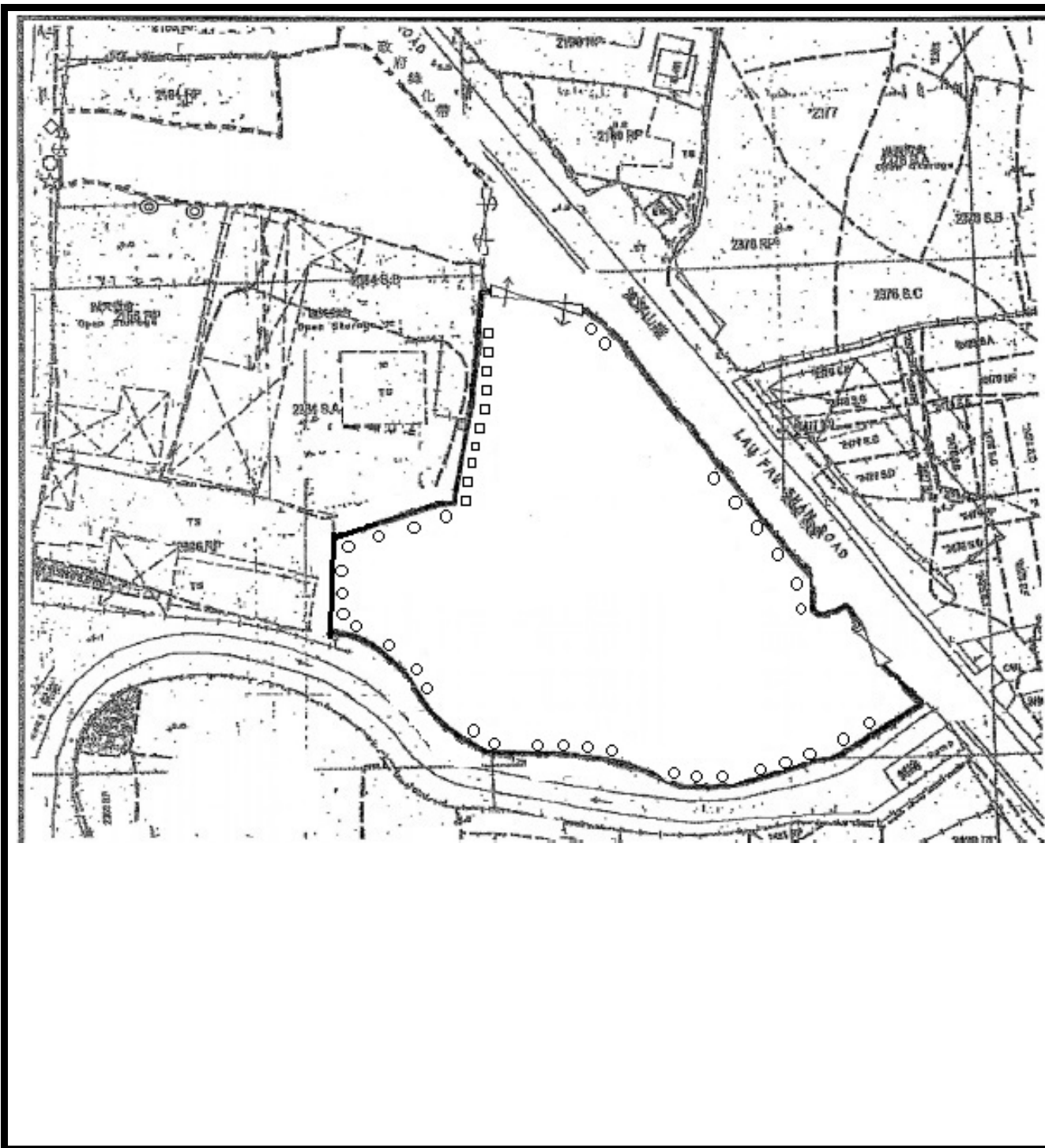
REV	DESCRIPTION	DATE	BY
G	FSD SUBMISSION	04-08-2024	WC
F	FSD SUBMISSION	31-12-2023	WC
E	WSD SUBMISSION	16-09-2022	JN
D	WSD SUBMISSION	02-04-2022	JN
C	WSD SUBMISSION	21-12-2020	JN
B	FSD COMMENT	15-12-2020	CAD
A	FSD SUBMISSION	01-02-2018	BY

FSI CONTRACTOR  
**East Power Engineering Limited**

PROJECT  
 PROPOSED TEMPORARY WAREHOUSE WITH ANCILLARY SITE OFFICE FOR A PERIOD OF 3 YEARS AT LOTS 2187RP (PART), 2380 RP(PART), 2381 RP(PART), 2382(PART), 2383 RP(PART), 2384 S.B (PART), 2385 RP(PART), 2412 RP, 2415 RP, 2416 (PART), 2417, 2418 RP(PART) AND 2419 RP(PART) IN D.D. 129 AND ADJOINING GOVERNMENT LAND, HA TSUEN, YUEN LONG.

DRAWING TITLE  
 GROUND FLOOR PLAN & WINDOW CALCULATION

	INITIAL	DESIGNATION	DATE
DRAWN BY	HY	Eng.T	01-02-2018
DESIGNED BY	HY	Eng.T	01-02-2018
CHECKED BY	CM	PM	01-02-2018
APPROVED BY	-	-	-
PROJECT NO.	10343		
PAPER SIZE	A3	PLOT SCALE	1 : 1
DRAWING NO.	EP-10343-GBP01		
SCALE	1:350 @A3	REVISION	G



Drawing No. 圖號:

附圖五

Drawing Title 圖目

園境設計圖

Scale 比例

1 : 1000

Project 項目

元朗廈村：DD129 LOT2187RP(pt)、2380RP(pt)、2381RP(pt)、2382(pt)、2383RP(pt)、2384S.B(pt)、2385RP(pt)、2412RP、2415RP、2416(pt)、2417、2418RP(pt)、2419RP(pt)及毗連政府土地。  
用途為臨時貨倉連附屬辦公室（為期三年）

Notes 備註：

- 細葉榕(現有保留) 33 棵
- 白千層(現有保留) 10 棵