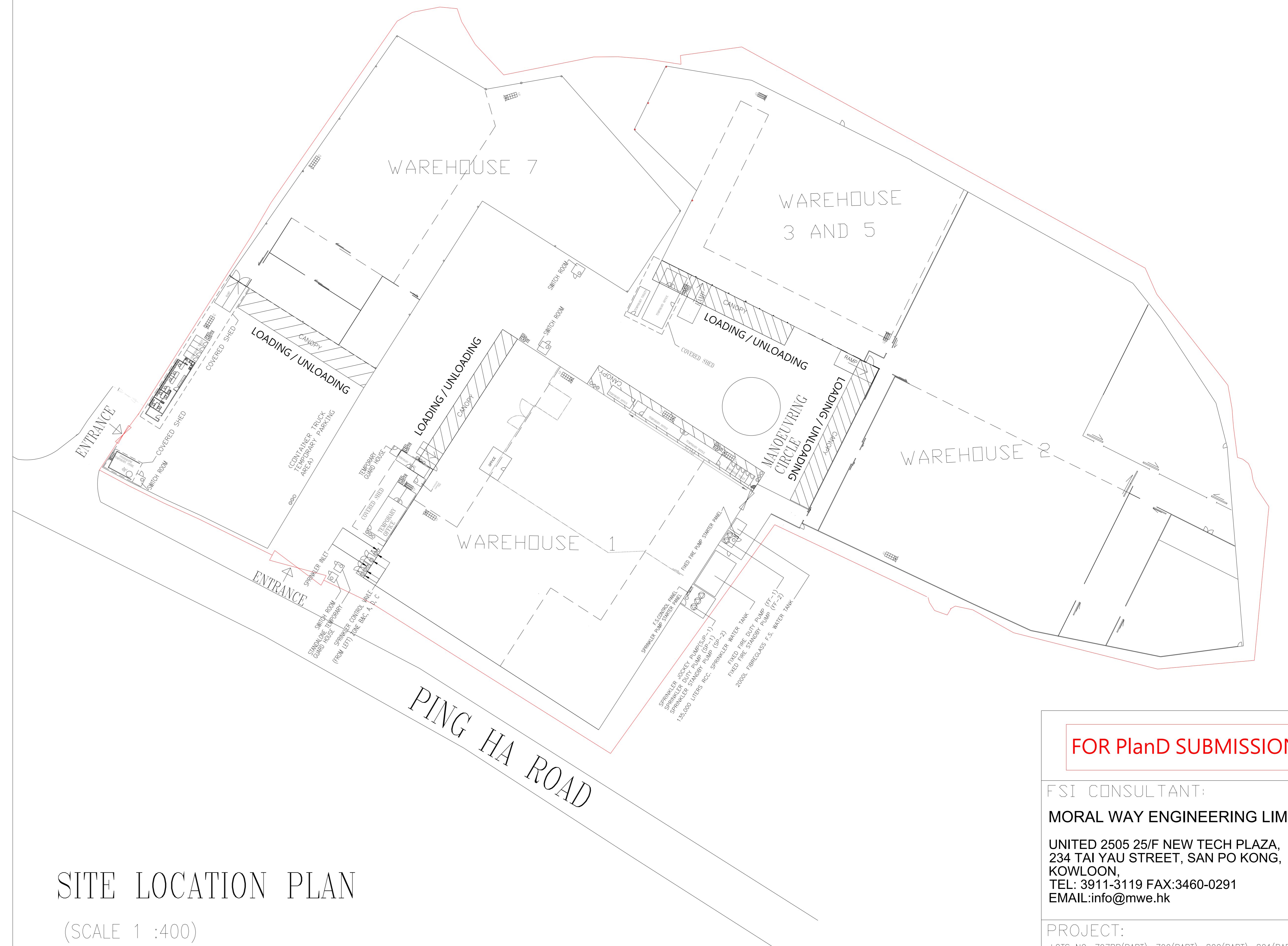


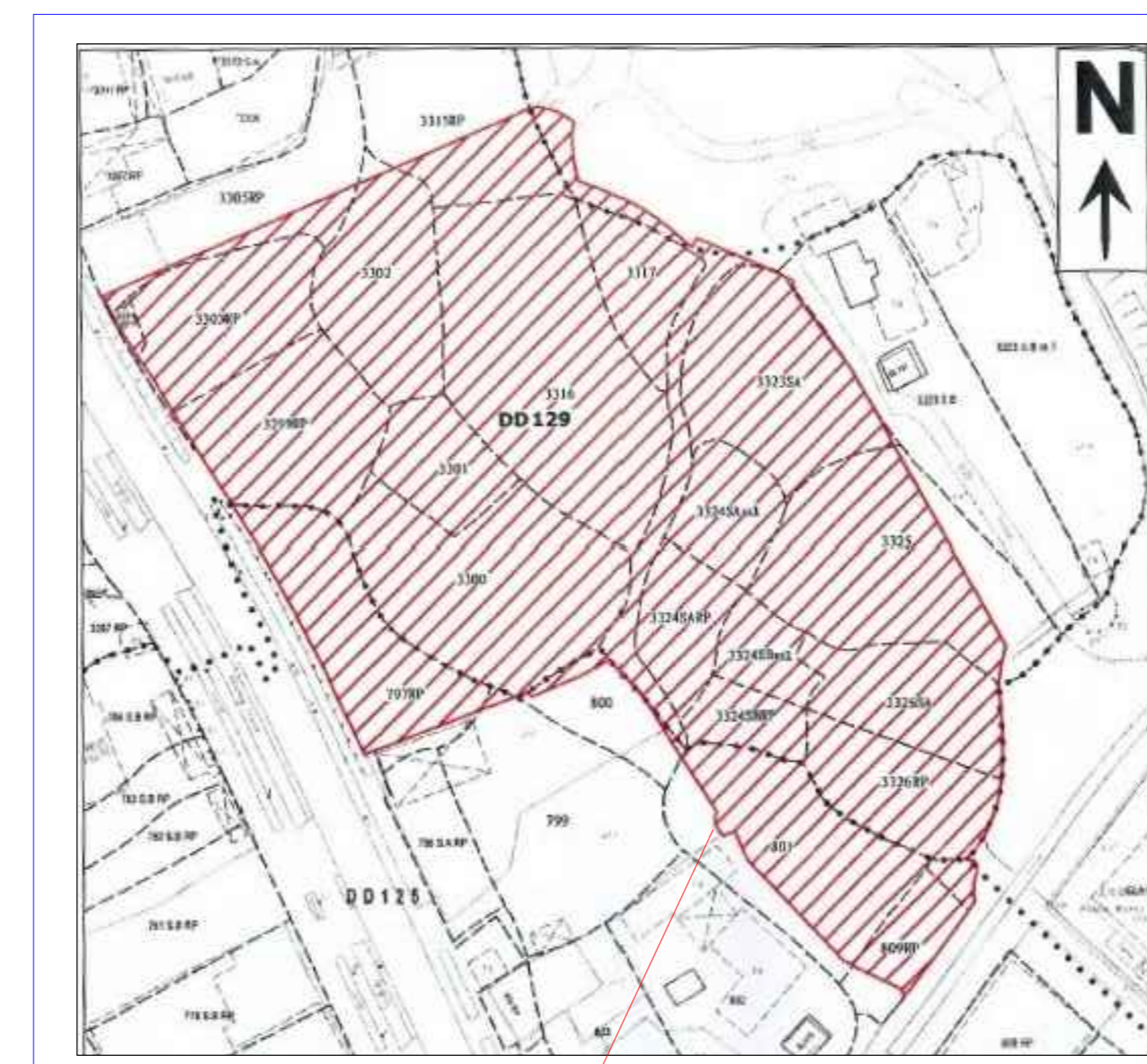
**FIRE SERVICE NOTES :**

1. A MODIFIED HOSE REEL SYSTEM WITH A 2,000 L F.S. TANK SHALL BE PROVIDED TO THE SUBJECT BUILDINGS IN ACCORDANCE WITH PARA. 5.14 OF THE CODE OF PRACTICE FOR MINIMUM FIRE SERVICE INSTALLATIONS AND EQUIPMENT 2012. HOSE REEL SHALL BE PROVIDED TO ENSURE THAT EVERY PART OF THE BUILDINGS WHERE CAN BE REACHED BY A LENGTH OF NOT MORE THAN 30M OF HOSE REEL TUBING.
  - 1.1 HOSE REEL SHALL BE PROVIDED AT POSITIONS AS INDICATED ON PLANS.
  - 1.2 NO FIRE SERVICE INLET TO BE PROVIDED FOR MODIFIED HOSE REEL SYSTEM.
  - 1.3 TWO FIXED FIRE PUMPS (DUTY/STANDY) TO BE PROVIDED.
2. FIRE ALARM SYSTEM SHALL BE PROVIDED IN ACCORDANCE WITH BS 5839-1 : 2002 + A2 : 2008 AND FSD CIRCULAR LETTERS NO. 1/2009 & 3/2010 & 2/2012. ONE ACTUATING POINT AND ONE AUDIO WARNING DEVICE TO BE LOCATED AT EACH HOSE REEL POINT. VISUAL ALARM SIGNALS TO BE PROVIDED. ACTUATING POINT SHALL INCLUDE FACILITIES FOR FIRE PUMP START AND AUDIO/VISUAL WARNING DEVICE INITIATION.
  - 2.1 FIRE ALARM PANEL TO BE PROVIDED AND LOCATED INSIDE F.S. PUMP ROOM.
3. SUFFICIENT EMERGENCY LIGHTING WITH 2 HOURS BACK UP BATTERY TO BE PROVIDED TO THE BUILDINGS IN ACCORDANCE WITH BS 5266 : PART 1 AND BS EN 1838.
4. SUFFICIENT EXIT SIGN / DIRECTIONAL SIGN TO BE PROVIDED IN ACCORDANCE WITH BS 5266 : PART 1 AND FSD CIRCULAR LETTER NO. 5/2008.
5. FIRE EXTINGUISHERS SHALL BE PROVIDED AS INDICATED ON PLANS.
6. WHEN A VENTILATION/AIR CONDITIONING CONTROL SYSTEM TO THE AREAS/BUILDING IS REQUIRED TO BE PROVIDED, IT SHALL STOP MECHANICALLY INDUCED AIR MOVEMENT WITHIN A DESIGNATED FIRE COMPARTMENT.
7. AUTOMATIC SPRINKLER SYSTEM SHALL BE PROVIDED TO THE ENTIRE BUILDING/STRUCTURE IN ACCORDANCE WITH LPC RULES INCORPORATING BS EN 12845 : 2015 AND FSD CIRCULAR LETTER 5/2020 EXCEPT E&M PLANT ROOMS. SPRINKLER SHALL NOT BE PROVIDED TO STANDALONE TEMPORARY : TOILETS / OFFICES / STORES / GUARD HOUSE WHERE TOTAL FLOOR AREAS LESS THAN 230 SQUARE METRES. SPRINKLER SHALL NOT BE PROVIDED TO AREAS OF COVERED SHED AS THOSE ARE METAL STRUCTURE WITH 2 SIDES OPENING.
  - 7.1 HAZARD CLASSIFICATION : OH3
  - 7.2 STORED PRODUCTS AND CATEGORIES : CATEGORY ( I )
  - 7.3 STORAGE CONFIGURATION : FREE STANDING (ST1) & POST-PALLET STORAGE (ST2)
  - 7.4 STORAGE HEIGHT NOT EXCEEDING : 4M & 3.5M
  - 7.5 STORAGE SHOULD BE CONFINED TO BLOCKS NOT EXCEEDING 50 SQ M. IN PLAN AREA FOR CATEGORY I.
  - 7.6 STORAGE BLOCKS SHOULD BE SEPARATED BY AISLES NO LESS THAN 2.4M WIDE.
  - 7.7 ONE NUMBER 135,000 LITRES SPRINKLER WATER TANK TO BE PROVIDED AS INDICATED ON PLANS.
  - 7.8 SPRINKLER PUMPS, SPRINKLER CONTROL VALVES AND SPRINKLER INLETS SHALL BE PROVIDED AS INDICATED ON PLANS.
8. SECONDARY SOURCE OF POWER SUPPLY FOR FIRE SERVICE INSTALLATIONS TO BE PROVIDED BY CONNECTION BEFORE THE MAIN SWITCH WITH AUTOMATIC CHANGE-OVER DEVICE AND SATISFACTION OF THE DIRECTOR OF FIRE SERVICES.
9. SMOKE EXTRACTION SYSTEM SHALL NOT BE PROVIDED WHEREAS THE AGGREGATE AREA OF OPENABLE WINDOWS OF THE COMPARTMENT EXCEEDS 6.25% OF THE FLOOR AREA OF THAT COMPARTMENT IN WAREHOUSES.



**SITE LOCATION PLAN**

(SCALE 1 : 400)



**BLOCK PLAN**

(NOT TO SCALE)

LOTS NO. 797RP(PART), 799(PART), 800(PART), 801(PART), 809RP(PART) IN DD 125, & 3299RP(PART), 3300(PART), 3301, 3302(PART), 3303RP(PART), 3304RP(PART), 3305RP(PART), 3315RP(PART), 3316,3317,3323SA(PART), 3323-SB(PART), 3324SAss1, 3324SARP, 3324SBss1, 3324SBRP, 3325(PART), 3326SA, 3326RP IN DD 129, AND THE GOVERNMENT LAND ADJOURNING THERETO HA TSUEN, YUEN LONG, NEW TERRITORIES.

**LEGEND**

- |  |   |  |                             |
|--|---|--|-----------------------------|
|  | COVERED SHED                                    |  | SPRINKLER INLET             |
|  | METAL GATE                                      |  | 5KG CO2 FIRE EXTINGUISHER   |
|  | FIRE ALARM BELL                                 |  | 9L W/ CO2 FIRE EXTINGUISHER |
|  | VISUAL FIRE ALARM                               |  | SAND BUCKET                 |
|  | MANUAL FIRE ALARM CALL POINT (BREAK GLASS TYPE) |  | F.S.CONTROL PANEL           |
|  | EXIT SIGN                                       |  |                             |
|  | SLIDING DOOR                                    |  |                             |
|  | HOSE REEL SET                                   |  |                             |
|  | FIXED FIRE PUMP/SPRINKLER PUMP                  |  |                             |
|  | SPRINKLER CONTROL VALVE                         |  |                             |

**FOR PlanD SUBMISSION**

FSI CONSULTANT:  
**MORAL WAY ENGINEERING LIMITED**  
 UNITED 2505 25/F NEW TECH PLAZA,  
 234 TAI YAU STREET, SAN PO KONG,  
 KOWLOON,  
 TEL: 3911-3119 FAX:3460-0291  
 EMAIL:info@mwe.hk

PROJECT:  
 LOTS NO. 797RP(PART), 799(PART), 800(PART), 801(PART), 809RP(PART) IN DD 125, & 3299RP(PART), 3300(PART), 3301, 3302(PART), 3303RP(PART), 3304RP(PART), 3305RP(PART), 3315RP(PART), 3316,3317,3323SA(PART), 3323-SB(PART), 3324SAss1, 3324SARP, 3324SBss1, 3324SBRP, 3325(PART), 3326SA, 3326RP IN DD 129, AND THE GOVERNMENT LAND ADJOURNING THERETO HA TSUEN, YUEN LONG, NEW TERRITORIES.

TITLE:  
 FS NOTES, BLOCK PLAN, LEGEND AND SITE LOCATION PLAN  
 (EXTENSION OF APPLICATION FOR RNTPC PAPER NO.A/HSK/316)

SCALE: 1:400 @A0	DRAWN BY: STANLEY TSUI
DATE: 29-05-2024	DESIGNED BY: HILLMAN LAU
DWG. NO: FS/01	CHECKED BY: HILLMAN LAU
CONTRACT NO.:	SHEET: 10
REVISION:	

LEGEND

- ⊙ 5KG CO2 FIRE EXTINGUISHER
- 9L W/ CO2 FIRE EXTINGUISHER
- ⊙ ⊙ ⊙ 1 NO. OF 5KG CO2 FIRE EXTINGUISHER AND 2 NOS. OF SAND BUCKET



FOR PlanD SUBMISSION

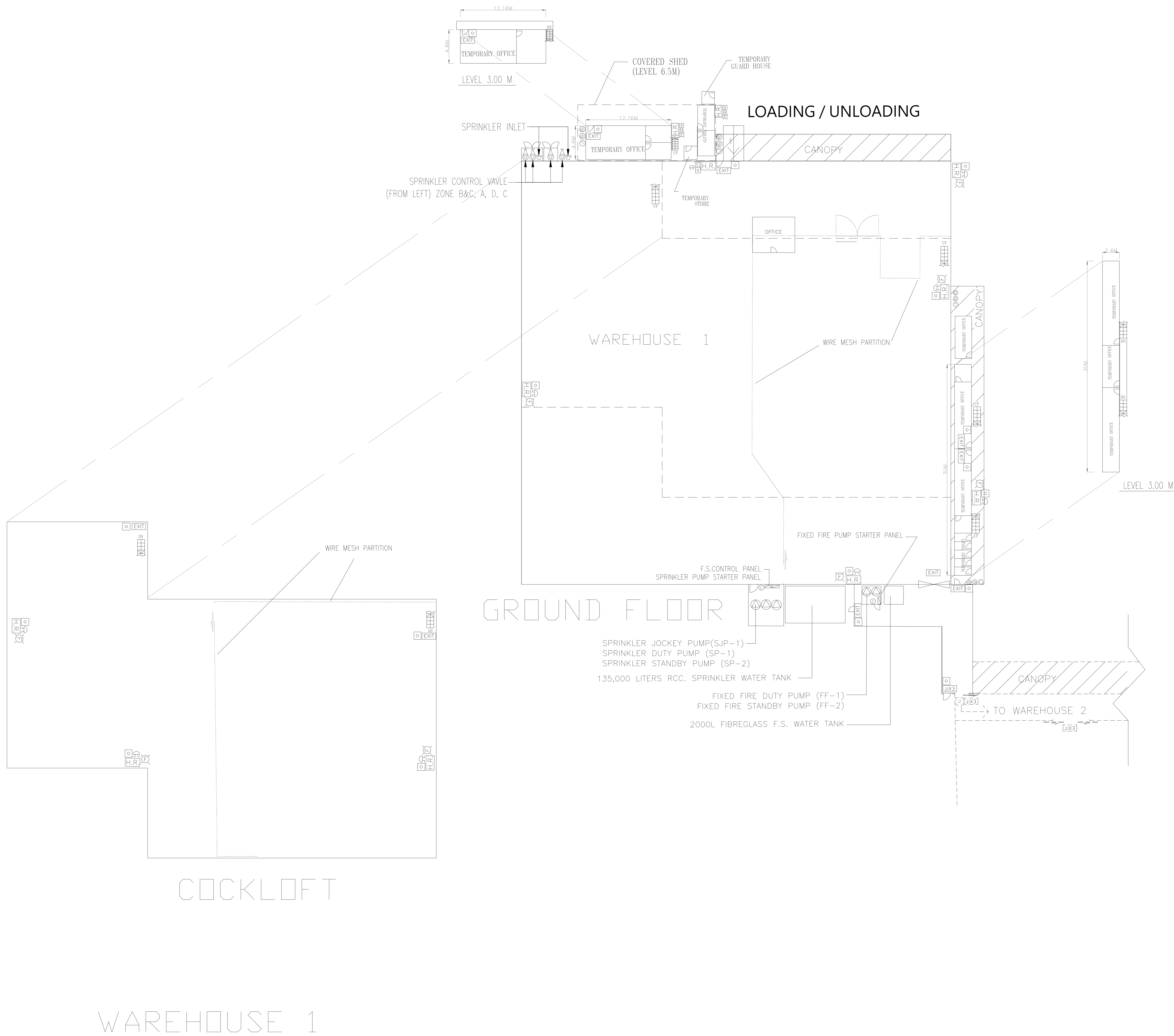
FSI CONSULTANT:  
**MORAL WAY ENGINEERING LIMITED**  
 UNITED 2505 25/F NEW TECH PLAZA,  
 234 TAI YAU STREET, SAN PO KONG,  
 KOWLOON,  
 TEL: 3911-3119 FAX:3460-0291  
 EMAIL: info@mwe.hk

PROJECT:  
 LOTS NO. 797RP(PART), 799(PART), 800(PART), 801(PART),  
 809RP(PART) IN DD 125, & 3299RP(PART), 3300(PART), 3301,  
 3302(PART), 3303RP(PART), 3304RP(PART), 3305RP(PART),  
 3315RP(PART), 3316, 3317, 3323SA(PART), 3323SB(PART),  
 3324SAss1, 3324SARP, 3324SBss1, 3324SBRP, 3325(PART),  
 3326SA, 3326RP IN DD 129, AND THE GOVERNMENT LAND  
 ADJOURNING THERETO HA TSUEN, YUEN LONG, NEW  
 TERRITORIES.

TITLE:  
 PART PLAN  
 (EXTENSION OF APPLICATION FOR  
 RNTPC PAPER NO.A/HSK/316 )

SCALE: 1:200 @A0	DRAWN BY: STANLEY TSUI
DATE: 29-05-2024	DESIGNED BY: HILLMAN LAU
DWG. NO: FS/02	CHECKED BY: HILLMAN LAU
CONTRACT NO.:	SHEET: 10
REVISION:	

PART PLAN  
 (SCALE 1 :200)



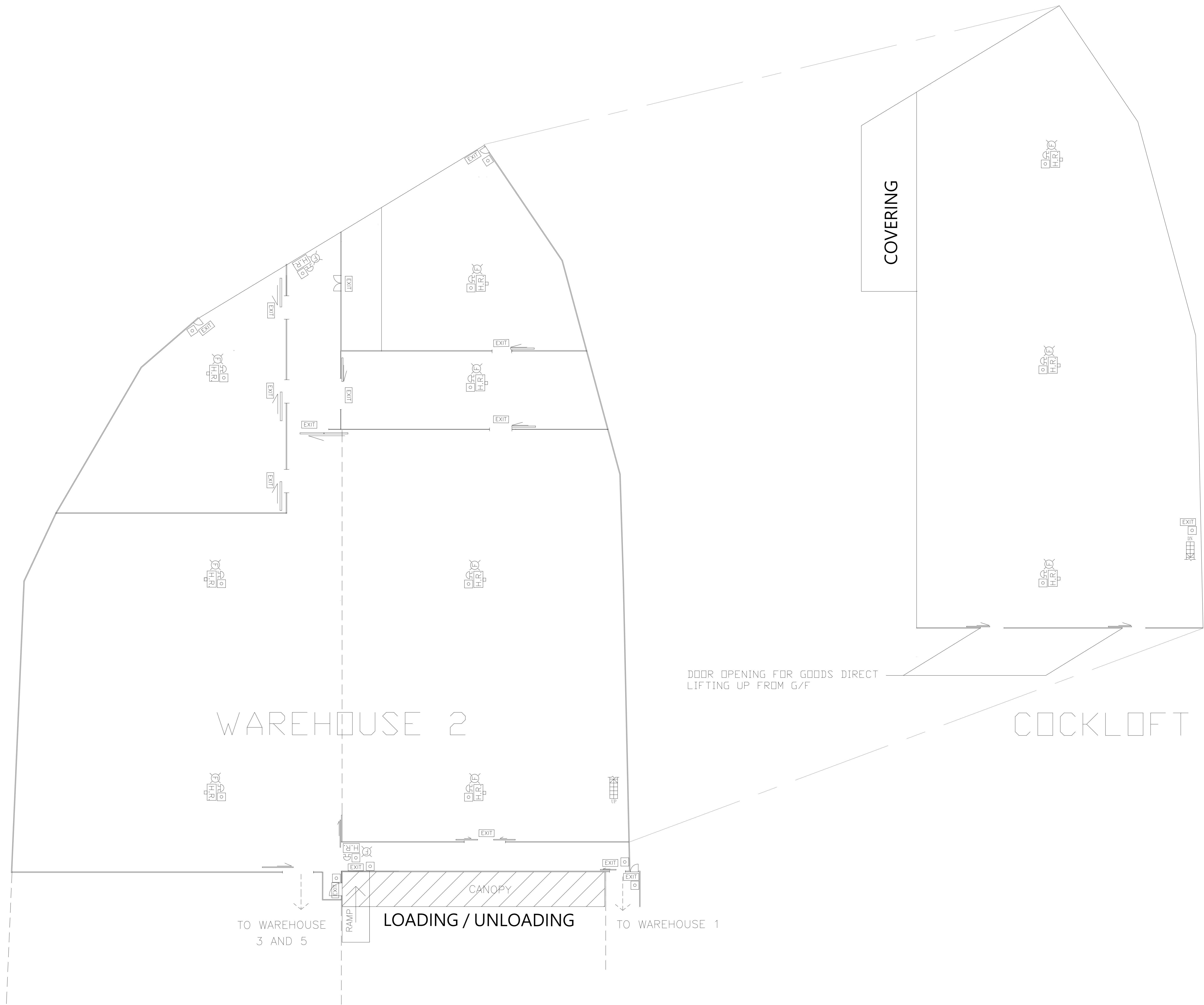
**FOR PlanD SUBMISSION**

FSI CONSULTANT:  
**MORAL WAY ENGINEERING LIMITED**  
 UNITED 2505 25/F NEW TECH PLAZA,  
 234 TAI YAU STREET, SAN PO KONG,  
 KOWLOON,  
 TEL: 3911-3119 FAX:3460-0291  
 EMAIL:info@mwe.hk

PROJECT:  
 LOTS NO. 797RP(PART), 799(PART), 800(PART), 801(PART),  
 809RP(PART) IN DD 125, & 3299RP(PART), 3300(PART), 3301,  
 3302(PART), 3303RP(PART), 3304RP(PART), 3305RP(PART),  
 3315RP(PART), 3316,3317,3323SA(PART), 3323SB(PART),  
 3324SAss1, 3324SARP, 3324SBss1, 3324SBRP, 3325(PART),  
 3326SA, 3326RP IN DD 129, AND THE GOVERNMENT LAND  
 ADJOURNING THERETO HA TSUEN, YUEN LONG, NEW  
 TERRITORIES.

TITLE:  
 FIRE SERVICE LAYOUT FOR  
 WAREHOUSE 1  
 (EXTENSION OF APPLICATION FOR  
 RNTPC PAPER NO.A/HSK/316 )

SCALE: 1:200 @A0	DRAWN BY: STANLEY TSUI
DATE: 29-05-2024	DESIGNED BY: HILLMAN LAU
DWG. NO: FS/03	CHECKED BY: HILLMAN LAU
CONTRACT NO.:	SHEET: 10
REVISION:	



GROUND FLOOR

WAREHOUSE 2

**FOR PlanD SUBMISSION**

FSI CONSULTANT:  
**MORAL WAY ENGINEERING LIMITED**  
 UNITED 2505 25/F NEW TECH PLAZA,  
 234 TAI YAU STREET, SAN PO KONG,  
 KOWLOON,  
 TEL: 3911-3119 FAX:3460-0291  
 EMAIL:info@mwe.hk

PROJECT:  
 LOTS NO. 797RP(PART), 799(PART), 800(PART), 801(PART),  
 809RP(PART) IN DD 125, & 3299RP(PART), 3300(PART), 3301,  
 3302(PART), 3303RP(PART), 3304RP(PART), 3305RP(PART),  
 3315RP(PART), 3316,3317,3323SA(PART), 3323SB(PART),  
 3324SAss1, 3324SARP, 3324SBSs1, 3324SBRP, 3325(PART),  
 3326SA, 3326RP IN DD 129, AND THE GOVERNMENT LAND  
 ADJOURNING THERETO HA TSUEN, YUEN LONG, NEW  
 TERRITORIES.

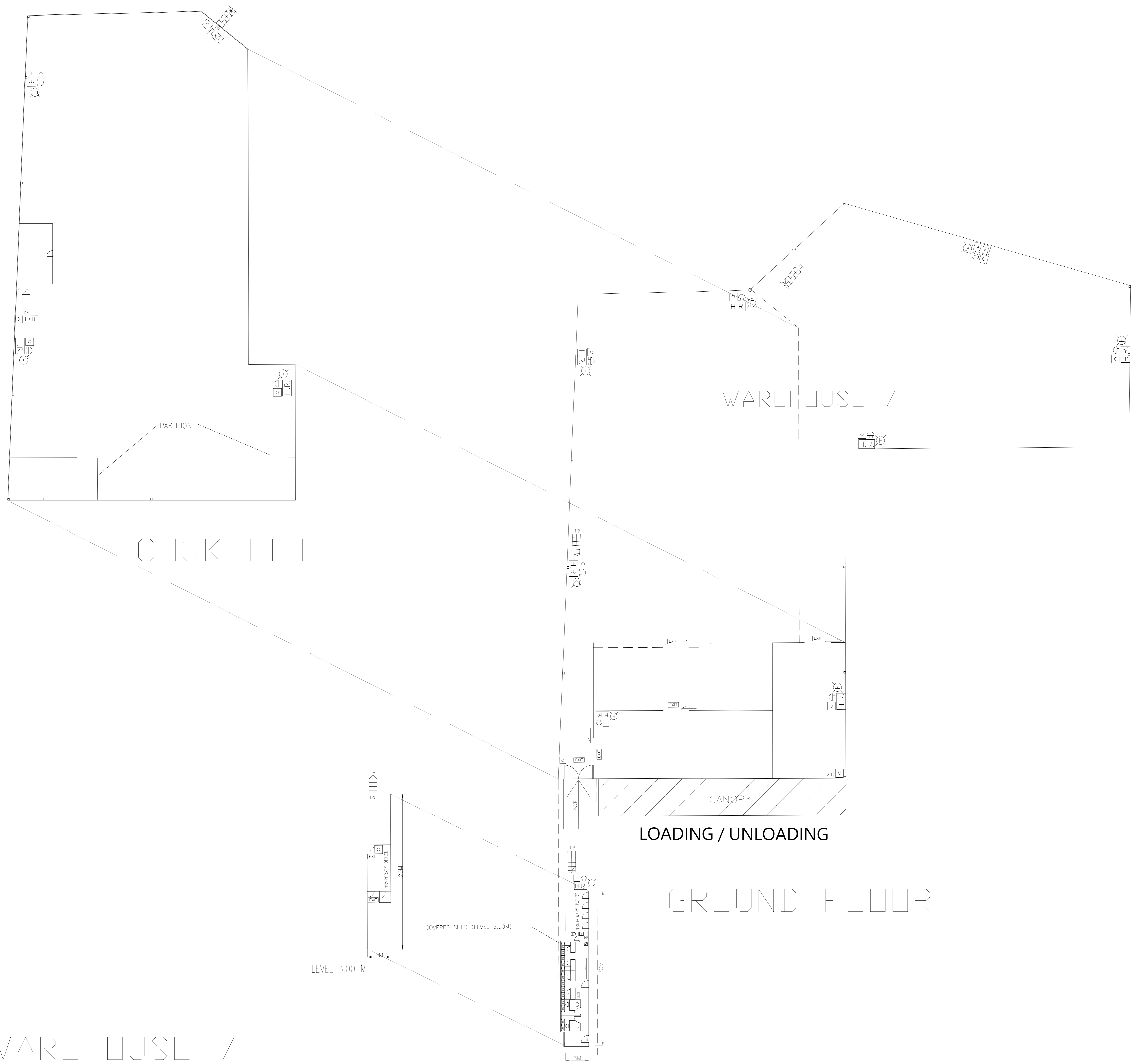
TITLE:  
 FIRE SERVICE LAYOUT FOR  
 WAREHOUSE 2  
 (EXTENSION OF APPLICATION FOR  
 RNTPC PAPER NO.A/HSK/316 )

SCALE: 1:200 @A0	DRAWN BY: STANLEY TSUI
DATE: 29-05-2024	DESIGNED BY: HILLMAN LAU
DWG. NO: FS/04	CHECKED BY: HILLMAN LAU

REVISION:										

SHEET:  
10





**FOR PlanD SUBMISSION**

FSI CONSULTANT:  
**MORAL WAY ENGINEERING LIMITED**  
 UNITED 2505 25/F NEW TECH PLAZA,  
 234 TAI YAU STREET, SAN PO KONG,  
 KOWLOON,  
 TEL: 3911-3119 FAX:3460-0291  
 EMAIL: info@mwe.hk

PROJECT:  
 LOTS NO. 797RP(PART), 799(PART), 800(PART), 801(PART),  
 809RP(PART) IN DD 125, & 3299RP(PART), 3300(PART), 3301,  
 3302(PART), 3303RP(PART), 3304RP(PART), 3305RP(PART),  
 3315RP(PART), 3316, 3317, 3323SA(PART), 3323SB(PART),  
 3324SAss1, 3324SARP, 3324SBss1, 3324SBRP, 3325(PART),  
 3326SA, 3326RP IN DD 129, AND THE GOVERNMENT LAND  
 ADJOURNING THERETO HA TSUEN, YUEN LONG, NEW  
 TERRITORIES.

TITLE:  
 FIRE SERVICE LAYOUT FOR  
 WAREHOUSE 7  
 (EXTENSION OF APPLICATION FOR  
 RNTPC PAPER NO.A/HSK/316 )

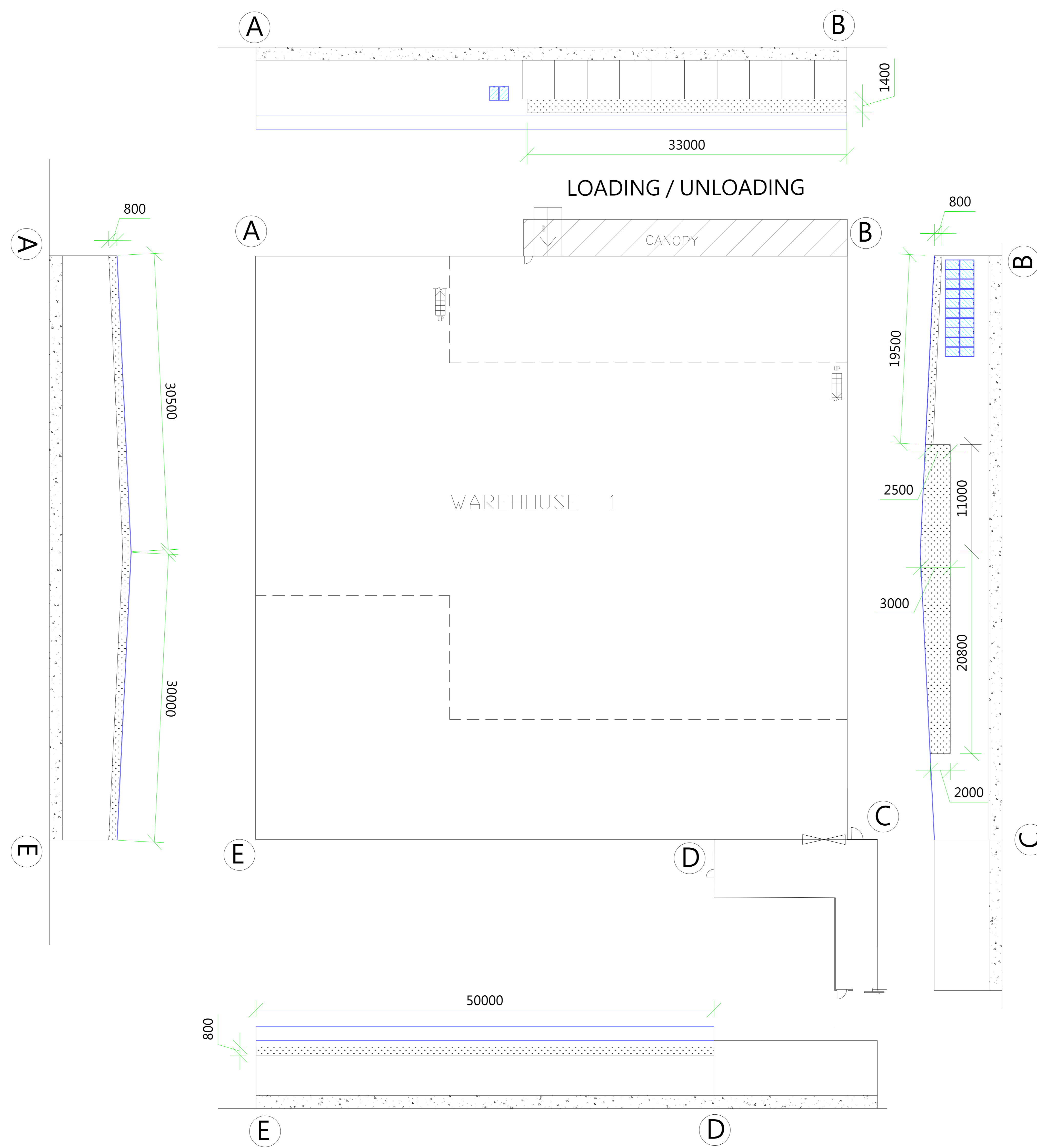
SCALE: 1:200 @A0	DRAWN BY: STANLEY TSUI
DATE: 29-05-2022	DESIGNED BY: HILLMAN LAU
DWG. NO: FS/06	CHECKED BY: HILLMAN LAU
CONTRACT NO.:	SHEET: 10
REVISION:	

# WAREHOUSE 1

FLOOR AREA		REQUIRED OPENABLE WINDOWS
AREA	3796 M <sup>2</sup>	X 6.25% = 237.25 M <sup>2</sup>

OPENABLE WINDOWS
1 M X 1.5 M = 1.5 M <sup>2</sup> X 22 Nos. = 33 M <sup>2</sup>

VENTILATION OPENING		PROVIDED OPENABLE WINDOWS
0.8 M X	130 M = 104 M <sup>2</sup>	= 265.45 M <sup>2</sup>
1.4 M X	33 M = 46.2 M <sup>2</sup>	
(3+2.5) M X	11 M /2 = 30.25 M <sup>2</sup>	
(3+2) M X	20.8 M /2 = 52 M <sup>2</sup>	



**FOR PlanD SUBMISSION**

FSI CONSULTANT:  
**MORAL WAY ENGINEERING LIMITED**  
 UNITED 2505 25/F NEW TECH PLAZA,  
 234 TAI YAU STREET, SAN PO KONG,  
 KOWLOON,  
 TEL: 3911-3119 FAX:3460-0291  
 EMAIL:info@mwe.hk

PROJECT:  
 LOTS NO. 797RP(PART), 799(PART), 800(PART), 801(PART),  
 809RP(PART) IN DD 125, & 3299RP(PART), 3300(PART), 3301,  
 3302(PART), 3303RP(PART), 3304RP(PART), 3305RP(PART),  
 3315RP(PART), 3316,3317,3323SA(PART), 3323SB(PART),  
 3324SAss1, 3324SARP, 3324SBss1, 3324SBRP, 3325(PART),  
 3326SA, 3326RP IN DD 129, AND THE GOVERNMENT LAND  
 ADJOURNING THERETO HA TSUEN, YUEN LONG, NEW  
 TERRITORIES.

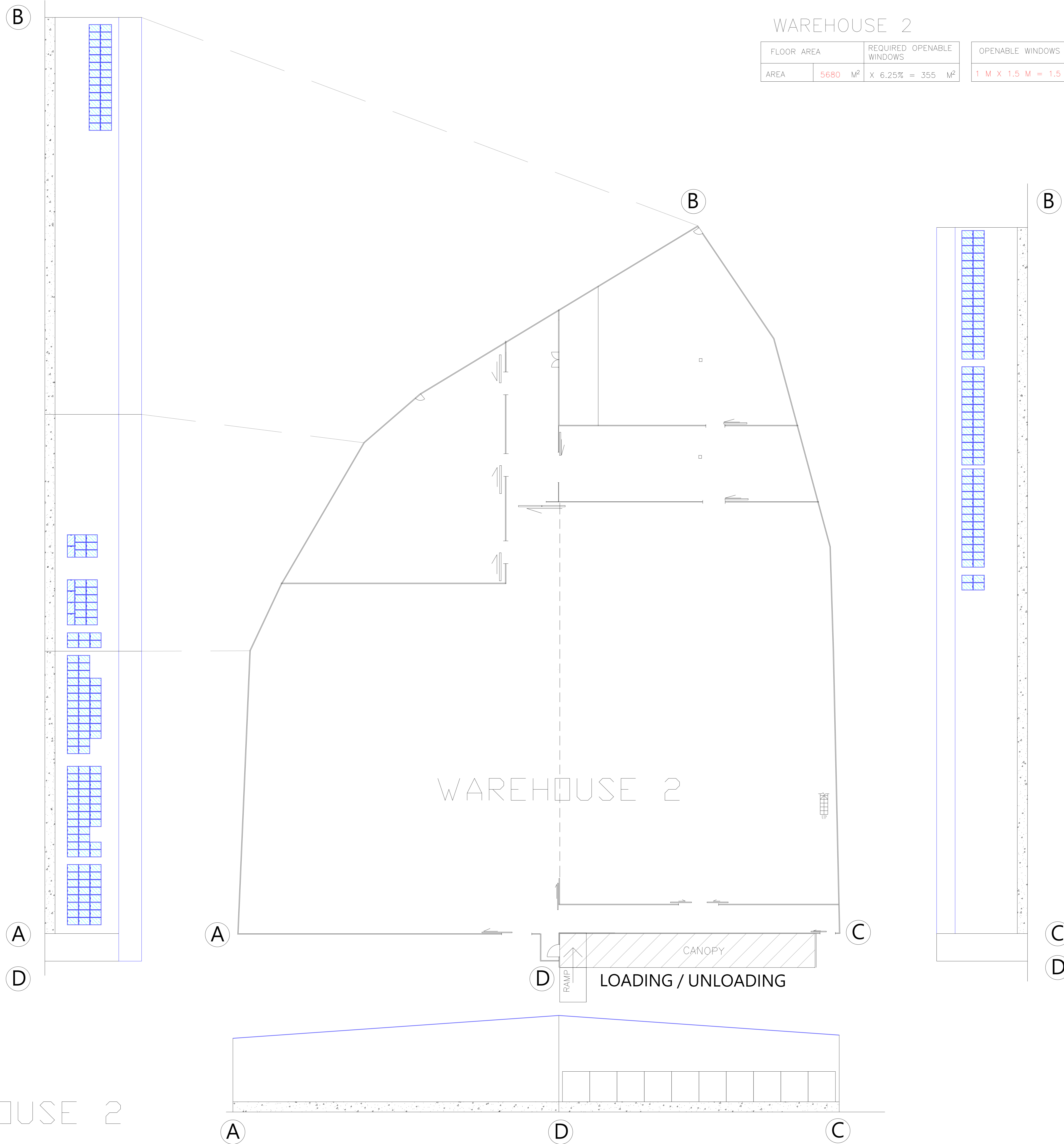
TITLE:  
 PROVISION OF OPENABLE WINDOW  
 AREA WITH CALCULATION  
 (EXTENSION OF APPLICATION FOR  
 RNTPC PAPER NO.A/HSK/316 )

SCALE: 1:200 @A0	DRAWN BY: STANLEY TSUI
DATE: 29-05-2022	DESIGNED BY: HILLMAN LAU
DWG. NO: FS/07	CHECKED BY: HILLMAN LAU
CONTRACT NO.:	SHEET: 10
REVISION:	

WAREHOUSE 1

# WAREHOUSE 2

FLOOR AREA		REQUIRED OPENABLE WINDOWS	OPENABLE WINDOWS	PROVIDED OPENABLE WINDOWS
AREA	5680 M <sup>2</sup>	X 6.25% = 355 M <sup>2</sup>	1 M X 1.5 M = 1.5 M <sup>2</sup> X 240 Nos. = 360 M <sup>2</sup>	= 360 M <sup>2</sup>



**FOR PlanD SUBMISSION**

**FSI CONSULTANT:**  
**MORAL WAY ENGINEERING LIMITED**  
 UNITED 2505 25/F NEW TECH PLAZA,  
 234 TAI YAU STREET, SAN PO KONG,  
 KOWLOON,  
 TEL: 3911-3119 FAX:3460-0291  
 EMAIL: info@mwe.hk

**PROJECT:**  
 LOTS NO. 797RP(PART), 799(PART), 800(PART), 801(PART),  
 809RP(PART) IN DD 125, & 3299RP(PART), 3300(PART), 3301,  
 3302(PART), 3303RP(PART), 3304RP(PART), 3305RP(PART),  
 3315RP(PART), 3316, 3317, 3323SA(PART), 3323SB(PART),  
 3324SAss1, 3324SARP, 3324SBss1, 3324SBRP, 3325(PART),  
 3326SA, 3326RP IN DD 129, AND THE GOVERNMENT LAND  
 ADJOURNING THERETO HA TSUEN, YUEN LONG, NEW  
 TERRITORIES.

**TITLE:**  
 PROVISION OF OPENABLE WINDOW  
 AREA WITH CALCULATION  
 (EXTENSION OF APPLICATION FOR  
 RNTPC PAPER NO.A/HSK/316 )

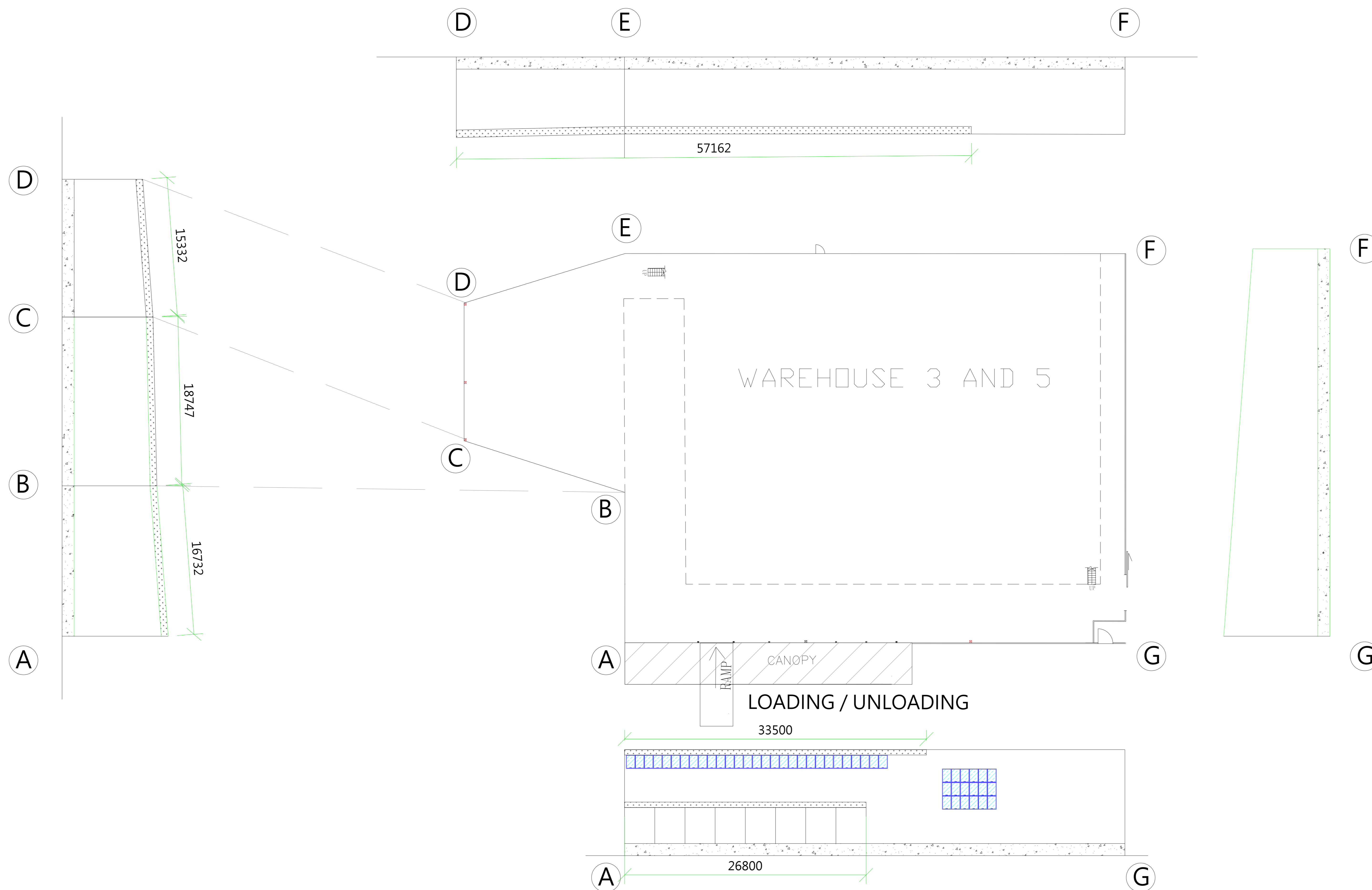
SCALE: 1:200 @A0	DRAWN BY: STANLEY TSUI
DATE: 29-05-2024	DESIGNED BY: HILLMAN LAU
DWG. NO: FS/08	CHECKED BY: HILLMAN LAU
CONTRACT NO.:	SHEET: 10
REVISION:	

WAREHOUSE 2



WAREHOUSE 3 AND 5

FLOOR AREA		REQUIRED OPENABLE WINDOWS	OPENABLE WINDOWS	VENTILATION OPENING	PROVIDED OPENABLE WINDOWS
AREA	2759 M <sup>2</sup>	X 6.25% = 172.5 M <sup>2</sup>	1 M X 1.5 M = 1.5 M <sup>2</sup> X 47 Nos. = 70.5 M <sup>2</sup>	+ 0.74 M X 168.273 M = 124.522 M <sup>2</sup>	= 195.022 M <sup>2</sup>



**FOR PlanD SUBMISSION**

FSI CONSULTANT:  
**MORAL WAY ENGINEERING LIMITED**  
 UNITED 2505 25/F NEW TECH PLAZA,  
 234 TAI YAU STREET, SAN PO KONG,  
 KOWLOON,  
 TEL: 3911-3119 FAX:3460-0291  
 EMAIL:info@mwe.hk

PROJECT:  
 LOTS NO. 797RP(PART), 799(PART), 800(PART), 801(PART),  
 809RP(PART) IN DD 125, & 3299RP(PART), 3300(PART), 3301,  
 3302(PART), 3303RP(PART), 3304RP(PART), 3305RP(PART),  
 3315RP(PART), 3316,3317,3323SA(PART), 3323SB(PART),  
 3324SAss1, 3324SARP, 3324SBss1, 3324SBRP, 3325(PART),  
 3326SA, 3326RP IN DD 129, AND THE GOVERNMENT LAND  
 ADJOURNING THERETO HA TSUEN, YUEN LONG, NEW  
 TERRITORIES.

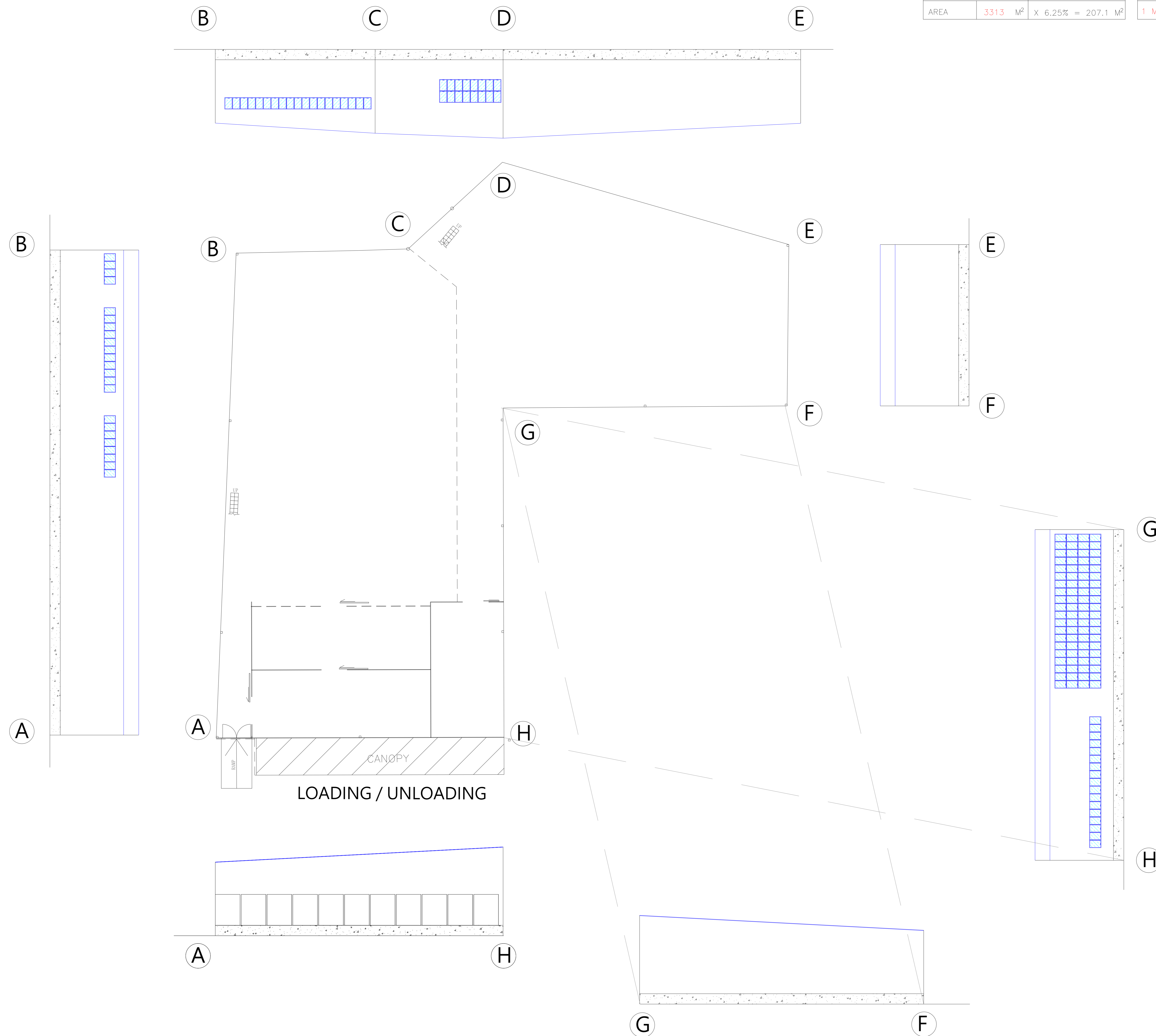
TITLE:  
 PROVISION OF OPENABLE WINDOW  
 AREA WITH CALCULATION  
 (EXTENSION OF APPLICATION FOR  
 RNTPC PAPER NO.A/HSK/316 )

SCALE: 1:200 @A0	DRAWN BY: STANLEY TSUI
DATE: 29-05-2024	DESIGNED BY: HILLMAN LAU
DWG. NO: FS/09	CHECKED BY: HILLMAN LAU
CONTRACT NO.:	SHEET: 10
REVISION:	

WAREHOUSE 3 AND 5

WAREHOUSE 7

FLOOR AREA		REQUIRED OPENABLE WINDOWS	OPENABLE WINDOWS	PROVIDED OPENABLE WINDOWS
AREA	3313 M <sup>2</sup>	X 6.25% = 207.1 M <sup>2</sup>	1 M X 1.5 M = 1.5 M <sup>2</sup> X 155 Nos. = 232.5M <sup>2</sup>	232.5 M <sup>2</sup>



**FOR PlanD SUBMISSION**

FSI CONSULTANT:  
**MORAL WAY ENGINEERING LIMITED**  
 UNITED 2505 25/F NEW TECH PLAZA,  
 234 TAI YAU STREET, SAN PO KONG,  
 KOWLOON,  
 TEL: 3911-3119 FAX:3460-0291  
 EMAIL:info@mwe.hk

PROJECT:  
LOTS NO. 797RP(PART), 799(PART), 800(PART), 801(PART), 809RP(PART) IN DD 125, & 3299RP(PART), 3300(PART), 3301, 3302(PART), 3303RP(PART), 3304RP(PART), 3305RP(PART), 3315RP(PART), 3316,3317,3323SA(PART), 3323SB(PART), 3324SAss1, 3324SARP, 3324SBss1, 3324SBRP, 3325(PART), 3326SA, 3326RP IN DD 129, AND THE GOVERNMENT LAND ADJOURNING THERETO HA TSUEN, YUEN LONG, NEW TERRITORIES.

TITLE:  
 PROVISION OF OPENABLE WINDOW AREA WITH CALCULATION  
 (EXTENSION OF APPLICATION FOR RNTPC PAPER NO.A/HSK/316 )

SCALE: 1:200 @A0	DRAWN BY: STANLEY TSUI
DATE: 29-05-2024	DESIGNED BY: HILLMAN LAU
DWG. NO: FS/10	CHECKED BY: HILLMAN LAU
CONTRACT NO.:	SHEET: 10
REVISION:	

WAREHOUSE 7