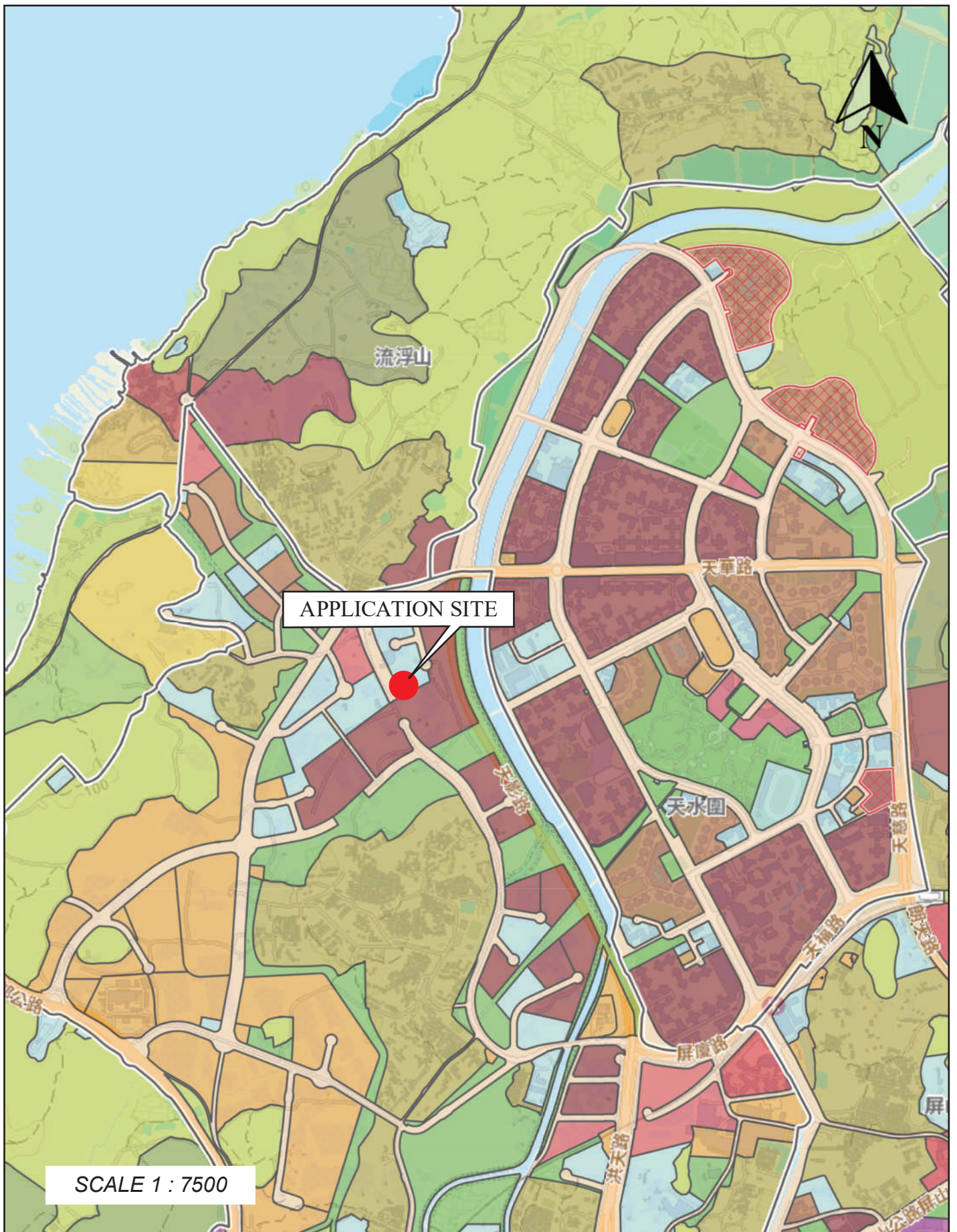
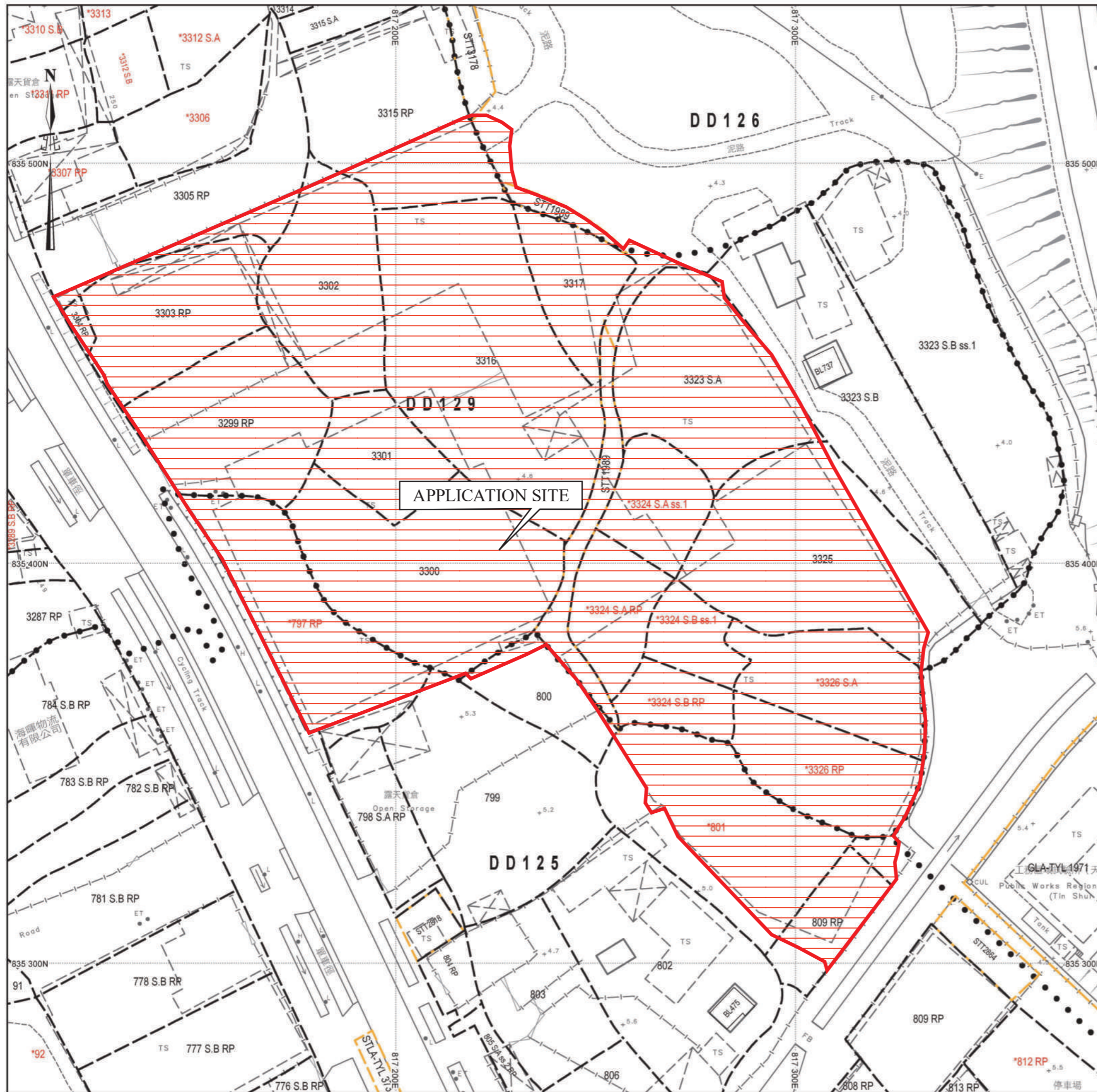


場地大綱圖

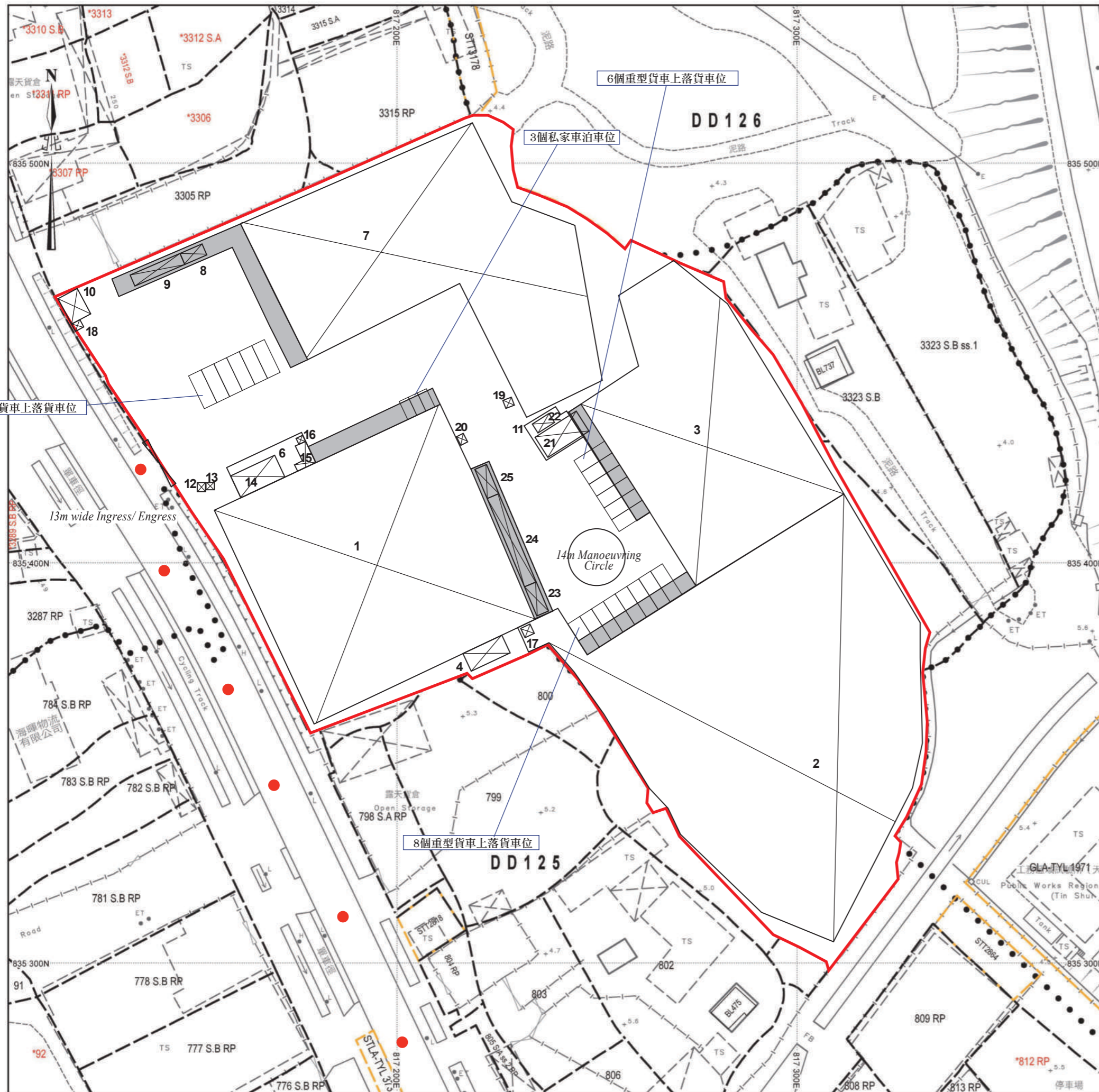


場地位置圖



SCALE 1 : 1000

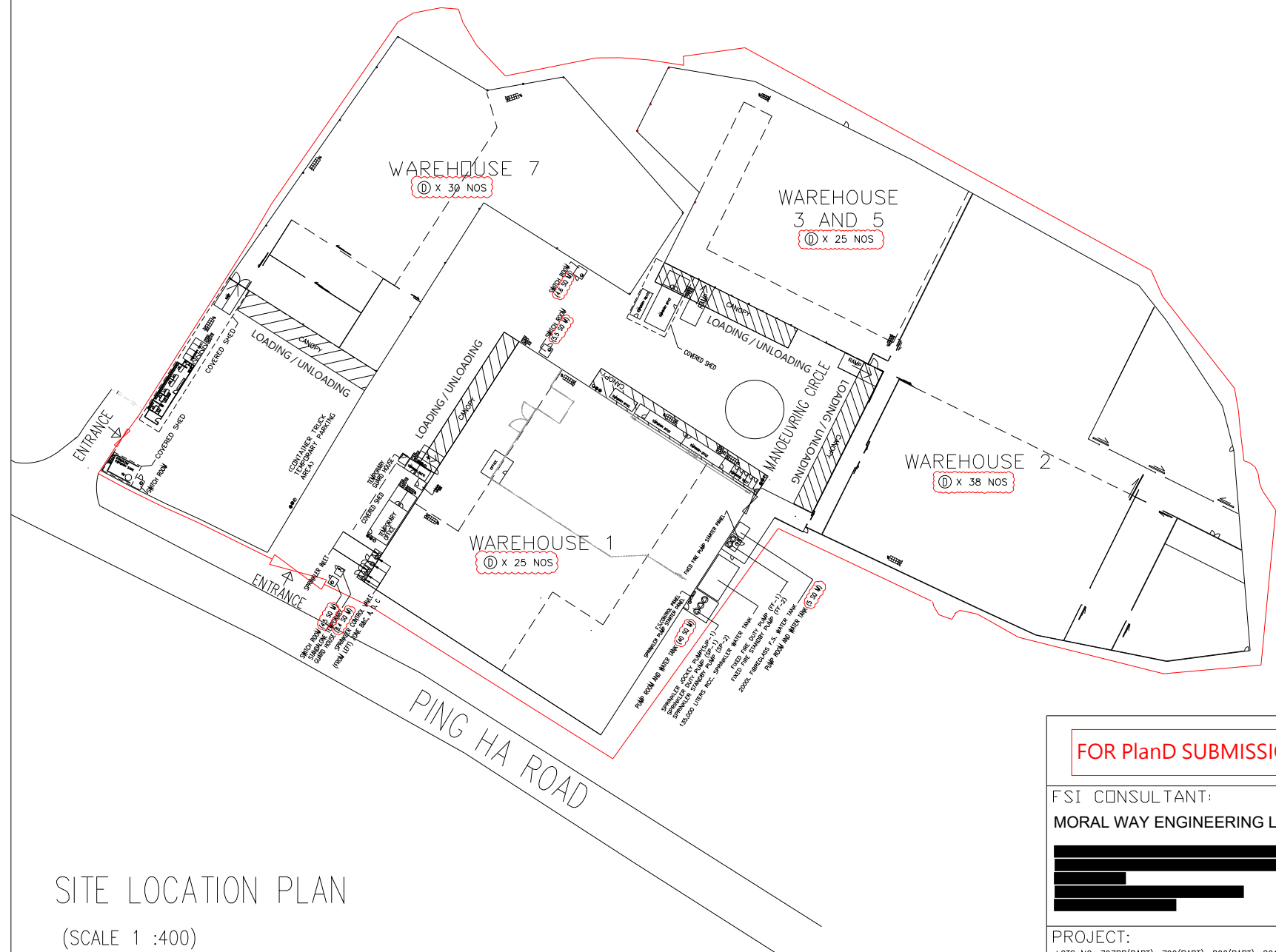
場地設計圖



- 簷篷
 - 行車路線
- SCALE 1 : 1000

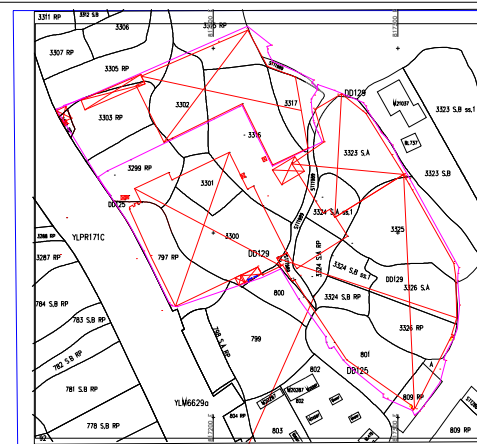
FIRE SERVICE NOTES :

1. A MODIFIED HOSE REEL SYSTEM WITH A 2,000 L F.S. TANK SHALL BE PROVIDED TO THE SUBJECT BUILDINGS IN ACCORDANCE WITH PARA. 5.14 OF THE CODE OF PRACTICE FOR MINIMUM FIRE SERVICE INSTALLATIONS AND EQUIPMENT 2022. HOSE REEL SHALL BE PROVIDED TO ENSURE THAT EVERY PART OF THE BUILDINGS WHERE CAN BE REACHED BY A LENGTH OF NOT MORE THAN 30M OF HOSE REEL TUBING.
 - 1.1 HOSE REEL SHALL BE PROVIDED AT POSITIONS AS INDICATED ON PLANS.
 - 1.2 NO FIRE SERVICE INLET TO BE PROVIDED FOR MODIFIED HOSE REEL SYSTEM.
 - 1.3 TWO FIXED FIRE PUMPS (DUTY/STANDY) TO BE PROVIDED.
2. FIRE ALARM SYSTEM SHALL BE PROVIDED IN ACCORDANCE WITH BS 5839-1 : 2017 AND THE FSD CIRCULAR LETTER NO. 6/2021. ONE ACTUATING POINT AND ONE AUDIO WARNING DEVICE TO BE LOCATED AT EACH HOSE REEL POINT. VISUAL ALARM SIGNALS TO BE PROVIDED. ACTUATING POINT SHALL INCLUDE FACILITIES FOR FIRE PUMP START AND AUDIO/VISUAL WARNING DEVICE INITIATION.
 - 2.1 FIRE ALARM PANEL TO BE PROVIDED AND LOCATED INSIDE F.S. PUMP ROOM.
3. SUFFICIENT EMERGENCY LIGHTING WITH 2 HOURS BACK UP BATTERY TO BE PROVIDED TO THE BUILDINGS IN ACCORDANCE WITH BS 5266-1:2016, BS EN 1838:2013 AND THE FSD CIRCULAR LETTER NO 4/2021.
4. SUFFICIENT EXIT SIGN / DIRECTIONAL SIGN TO BE PROVIDED IN ACCORDANCE WITH BS 5266 : PART 1 AND FSD CIRCULAR LETTER NO. 5/2008.
5. FIRE EXTINGUISHERS SHALL BE PROVIDED AS INDICATED TO EVERY STRUCTURE WITHIN THE APPLICATION SITE.
6. WHEN A VENTILATION/AIR CONDITIONING CONTROL SYSTEM TO THE AREAS/BUILDING IS REQUIRED TO BE PROVIDED, IT SHALL STOP MECHANICALLY INDUCED AIR MOVEMENT WITHIN A DESIGNATED FIRE COMPARTMENT.
7. AUTOMATIC SPRINKLER SYSTEM SHALL BE PROVIDED TO THE ENTIRE BUILDING/STRUCTURE IN ACCORDANCE WITH LPC RULES INCORPORATING BS EN 12845 : 2015 AND FSD CIRCULAR LETTER 5/2020 EXCEPT E&M PLANT ROOMS. SPRINKLER SHALL NOT BE PROVIDED TO STANDALONE TEMPORARY : TOILETS / OFFICES / STORES / GUARD HOUSE WHERE TOTAL FLOOR AREAS LESS THAN 230 SQUARE METRES. SPRINKLER SHALL NOT BE PROVIDED TO AREAS OF COVERED SHED AS THOSE ARE METAL STRUCTURE WITH 2 SIDES OPENING.
 - 7.1 HAZARD CLASSIFICATION : OH3
 - 7.2 STORED PRODUCTS AND CATEGORIES : CATEGORY (1)
 - 7.3 STORAGE CONFIGURATION : FREE STANDING (ST1) & POST-PALLET STORAGE (ST2)
 - 7.4 STORAGE HEIGHT NOT EXCEEDING : 4M & 3.5M
 - 7.5 STORAGE SHOULD BE CONFINED TO BLOCKS NOT EXCEEDING 50 SQ M. IN PLAN AREA FOR CATEGORY I.
 - 7.6 STORAGE BLOCKS SHOULD BE SEPARATED BY AISLES NO LESS THAN 2.4M WIDE.
 - 7.7 ONE NUMBER 135,000 LITRES SPRINKLER WATER TANK TO BE PROVIDED AS INDICATED ON PLANS.
 - 7.8 SPRINKLER PUMPS, SPRINKLER CONTROL VALVES AND SPRINKLER INLETS SHALL BE PROVIDED AS INDICATED ON PLANS.
8. SECONDARY SOURCE OF POWER SUPPLY FOR FIRE SERVICE INSTALLATIONS TO BE PROVIDED BY CONNECTION BEFORE THE MAIN SWITCH WITH AUTOMATIC CHANGE-OVER DEVICE AND SATISFACTION OF THE DIRECTOR OF FIRE SERVICES.
9. A SMOKE EXTRACTION SYSTEM WILL NOT BE PROVIDED FOR THE WAREHOUSES WHEN THE AGGREGATE AREA OF OPENABLE WINDOWS IS GREATER THAN THE REQUIRED 6.25% OF THE COMPARTMENT IN WAREHOUSES.
10. F.S. INLET WILL NOT BE PROVIDED IN THIS AREA.



SITE LOCATION PLAN

(SCALE 1 :400)



BLOCK PLAN

(NOT TO SCALE)

LOTS NO. 797RP(PART), 799(PART), 800(PART), 801(PART), 809RP(PART) IN DD 125, & 3299RP(PART), 3300(PART), 3301, 3302(PART), 3303RP(PART), 3304RP(PART), 3305RP(PART), 3315RP(PART), 3316, 3317, 3323SA(PART), 3323SB(PART), 3324SAs1, 3324SARP, 3324SBS1, 3324SBRP, 3325(PART), 3326SA, 3326RP IN DD 129, AND THE GOVERNMENT LAND ADJOURNING THERETO HA TSUEN, YUEN LONG, NEW TERRITORIES.

LEGEND

- | | | | |
|--|---|--|----------------------------------|
| | COVERED SHED | | SPRINKLER INLET |
| | METAL GATE | | 5KG CO2 FIRE EXTINGUISHER |
| | FIRE ALARM BELL | | 9L W/ CO2 FIRE EXTINGUISHER |
| | VISUAL FIRE ALARM | | SAND BUCKET |
| | MANUAL FIRE ALARM CALL POINT (BREAK GLASS TYPE) | | F.S. CONTROL PANEL |
| | EXIT SIGN | | 5KG DRY POWDER FIRE EXTINGUISHER |
| | SLIDING DOOR | | HOSE REEL SET |
| | DOUBLE SLIDING DOOR | | |
| | FIXED FIRE PUMP/SPRINKLER PUMP | | |
| | SPRINKLER CONTROL VALVE | | |

FOR Plan SUBMISSION

FSI CONSULTANT:
MORAL WAY ENGINEERING LIMITED

PROJECT:
LOTS NO. 797RP(PART), 799(PART), 800(PART), 801(PART), 809RP(PART) IN DD 125, & 3299RP(PART), 3300(PART), 3301, 3302(PART), 3303RP(PART), 3304RP(PART), 3305RP(PART), 3315RP(PART), 3316, 3317, 3323SA(PART), 3323SB(PART), 3324SAs1, 3324SARP, 3324SBS1, 3324SBRP, 3325(PART), 3326SA, 3326RP IN DD 129, AND THE GOVERNMENT LAND ADJOURNING THERETO HA TSUEN, YUEN LONG, NEW TERRITORIES.

TITLE:
FS NOTES, BLOCK PLAN, LEGEND AND SITE LOCATION PLAN

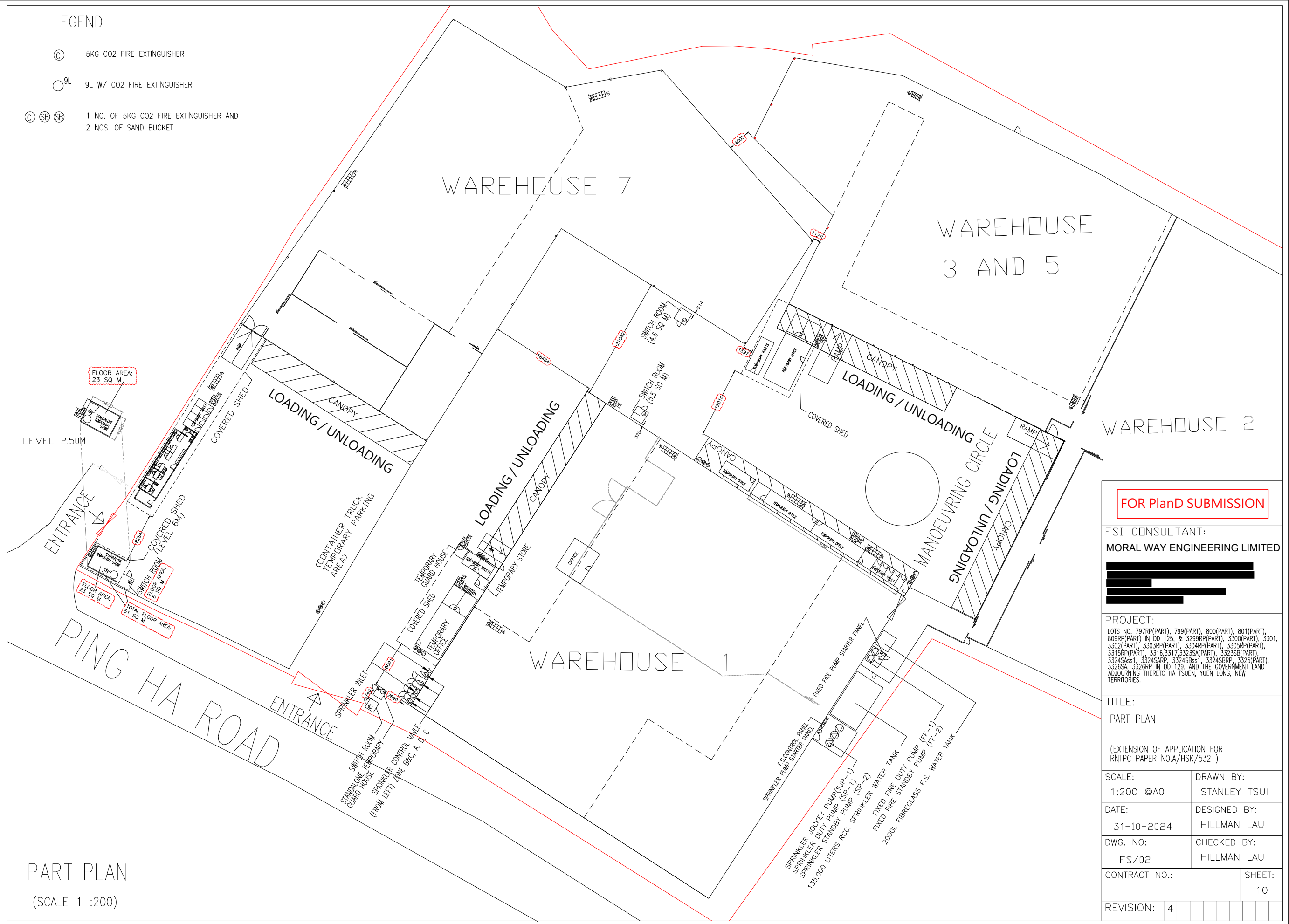
(EXTENSION OF APPLICATION FOR RNTPC PAPER NO.A/HSK/532)

| | |
|---------------------|-----------------------------|
| SCALE: 1:400 @A0 | DRAWN BY: STANLEY TSUI |
| DATE: 31-10-2024 | DESIGNED BY: HILLMAN LAU |
| DWG. NO: FS/01 | CHECKED BY: HILLMAN LAU |
| CONTRACT NO.: | SHEET: 10 |

| | | | | | | | |
|-----------|---|--|--|--|--|--|--|
| REVISION: | 4 | | | | | | |
|-----------|---|--|--|--|--|--|--|

LEGEND

- ⊙ 5KG CO2 FIRE EXTINGUISHER
- ^{9L} 9L W/ CO2 FIRE EXTINGUISHER
- ⊙ ⊙ ⊙ 1 NO. OF 5KG CO2 FIRE EXTINGUISHER AND 2 NOS. OF SAND BUCKET



FOR PlanD SUBMISSION

FSI CONSULTANT:
MORAL WAY ENGINEERING LIMITED



PROJECT:
LOTS NO. 797RP(PART), 799(PART), 800(PART), 801(PART), 809RP(PART) IN DD 126, & 3299RP(PART), 3300(PART), 3301, 3302(PART), 3303RP(PART), 3304RP(PART), 3305RP(PART), 3315RP(PART), 3316, 3317, 3323SA(PART), 3323SB(PART), 3324SAs1, 3324SARP, 3324SBs1, 3324SBRP, 3325(PART), 3326SA, 3326RP IN DD 129, AND THE GOVERNMENT LAND ADJOURNING THERETO HA TSUEN, YUEN LONG, NEW TERRITORIES.

TITLE:
PART PLAN

(EXTENSION OF APPLICATION FOR RNTPC PAPER NO.A/HSK/532)

| | |
|---------------------|---------------------------|
| SCALE: 1:200 @A0 | DRAWN BY: STANLEY TSUI |
|---------------------|---------------------------|

| | |
|---------------------|-----------------------------|
| DATE: 31-10-2024 | DESIGNED BY: HILLMAN LAU |
|---------------------|-----------------------------|

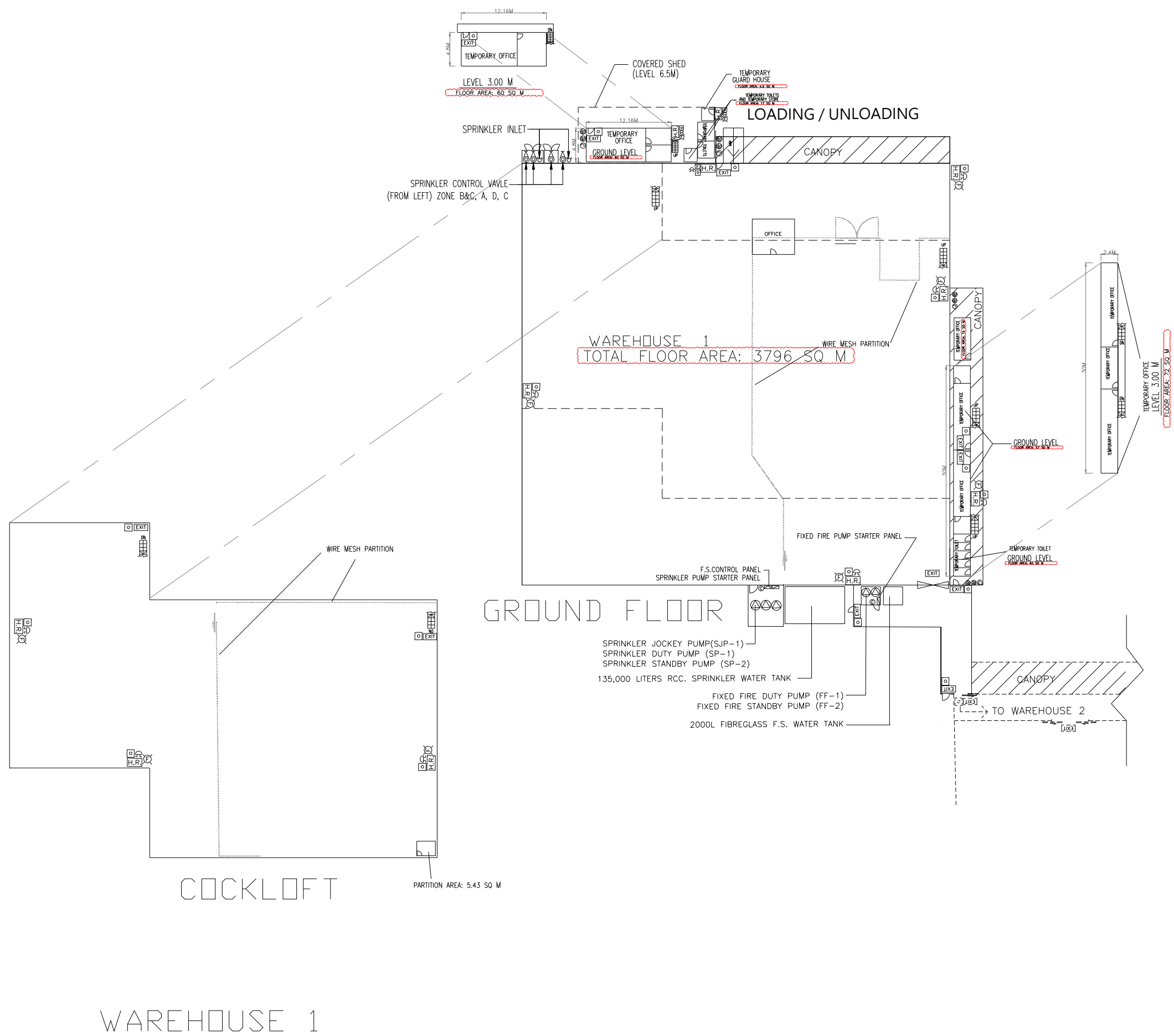
| | |
|-------------------|----------------------------|
| DWG. NO: FS/02 | CHECKED BY: HILLMAN LAU |
|-------------------|----------------------------|

| | |
|---------------|--------------|
| CONTRACT NO.: | SHEET: 10 |
|---------------|--------------|

| | |
|-------------|--|
| REVISION: 4 | |
|-------------|--|

PART PLAN

(SCALE 1 :200)



FOR Plan SUBMISSION

FSI CONSULTANT:
MORAL WAY ENGINEERING LIMITED

[Redacted Name]

PROJECT:
 LOTS NO. 797RP(PART), 799(PART), 800(PART), 801(PART), 809RP(PART) IN DD 126, & 3299RP(PART), 3300(PART), 3301, 3302(PART), 3303RP(PART), 3304RP(PART), 3305RP(PART), 3315RP(PART), 3316, 3317, 3323SA(PART), 3323SB(PART), 3324SAs1, 3324SRP, 3324SBes1, 3324SBRP, 3325(PART), 3326SA, 3326RP IN DD 129, AND THE GOVERNMENT LAND ADJOURNING THERETO HA TSUEN, YUEN LONG, NEW TERRITORIES.

TITLE:
FIRE SERVICE LAYOUT FOR WAREHOUSE 1
 (EXTENSION OF APPLICATION FOR RNTPC PAPER NO.A/HSK/532)

SCALE: 1:200 @A0
 DRAWN BY: STANLEY TSUI

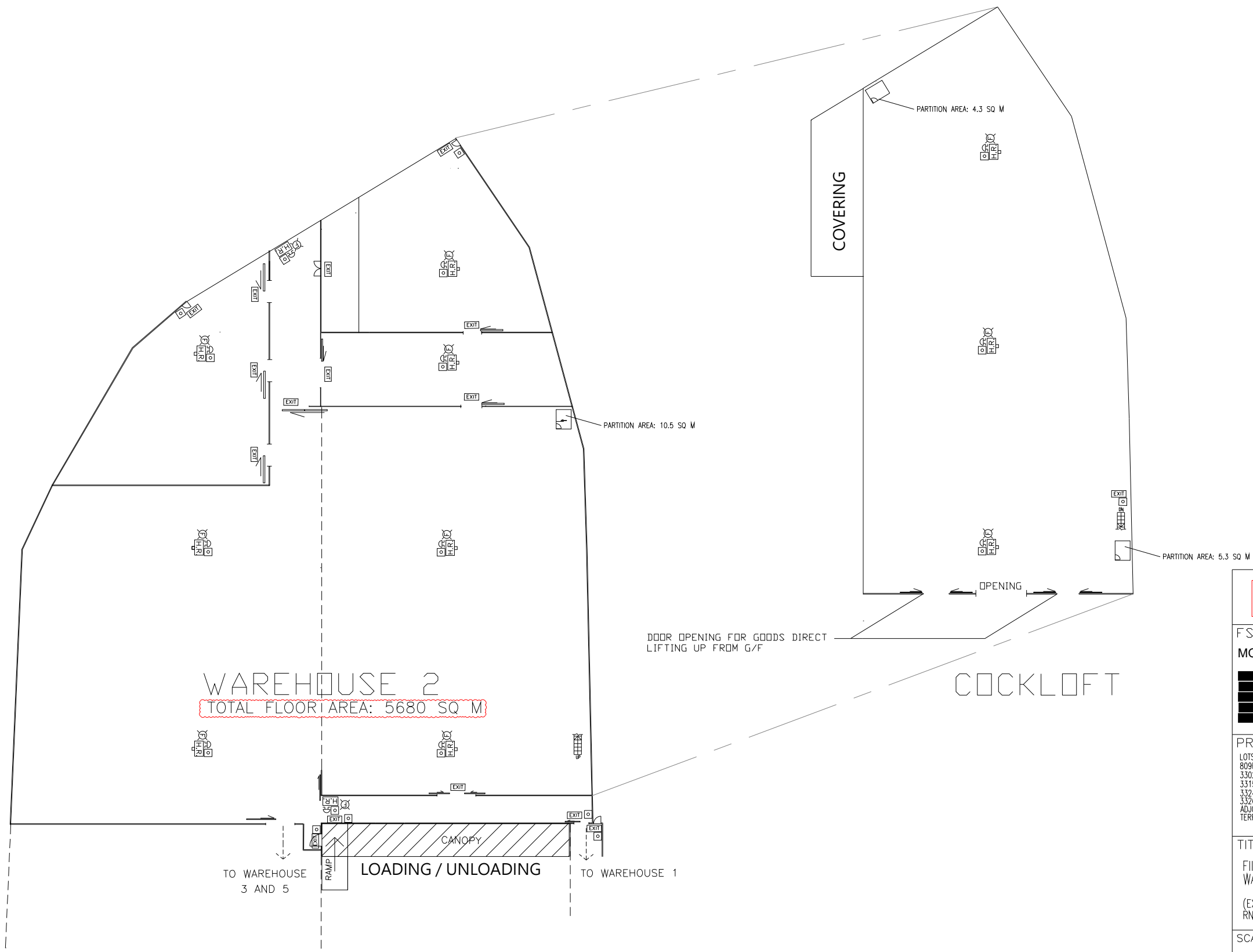
DATE: 31-10-2024
 DESIGNED BY: HILLMAN LAU

DWG. NO: FS/03
 CHECKED BY: HILLMAN LAU

CONTRACT NO.: SHEET: 10

REVISION: 4

WAREHOUSE 1



WAREHOUSE 2
 TOTAL FLOOR AREA: 5680 SQ M

FOR PlanD SUBMISSION

FSI CONSULTANT:
MORAL WAY ENGINEERING LIMITED
 [Redacted Name]
 [Redacted Address]

PROJECT:
 LOTS NO. 797RP(PART), 799(PART), 800(PART), 801(PART), 809RP(PART) IN DD 126, & 3299RP(PART), 3300(PART), 3301, 3302(PART), 3303RP(PART), 3304RP(PART), 3305RP(PART), 3315RP(PART), 3316, 3317, 3323SA(PART), 3323SB(PART), 3324SAs1, 3324SAPP, 3324SBes1, 3324SBRP, 3325(PART), 3326SA, 3326RP IN DD 129, AND THE GOVERNMENT LAND ADJOURNING THERETO HA TSUEN, YUEN LONG, NEW TERRITORIES.

TITLE:
 FIRE SERVICE LAYOUT FOR WAREHOUSE 2
 (EXTENSION OF APPLICATION FOR RNTPC PAPER NO.A/HSK/532)

SCALE: 1:200 @A0
 DRAWN BY: STANLEY TSUI

DATE: 31-10-2024
 DESIGNED BY: HILLMAN LAU

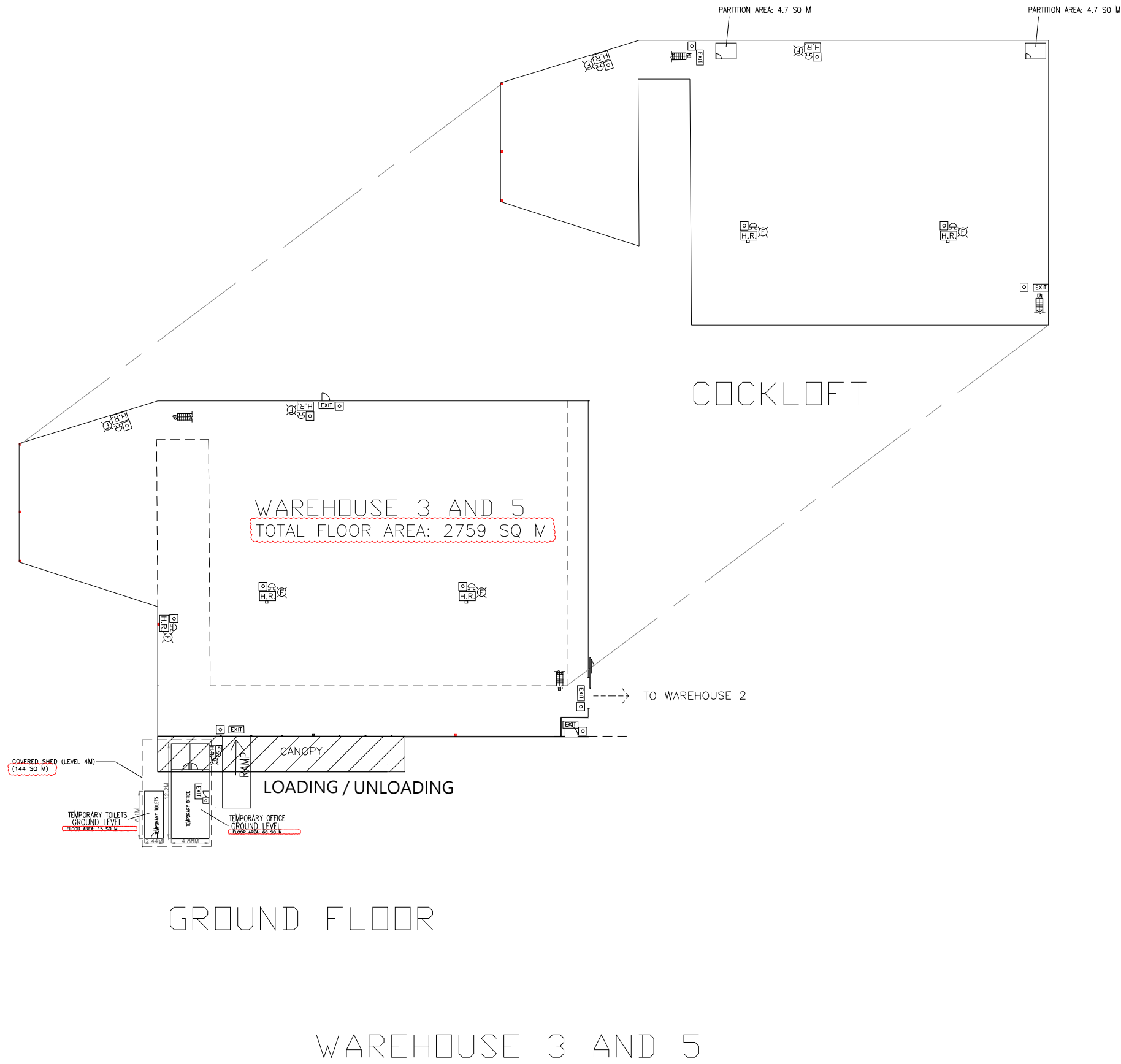
DWG. NO: FS/04
 CHECKED BY: HILLMAN LAU

SHEET: 10

| | | | | | | | |
|-----------|---|--|--|--|--|--|--|
| REVISION: | 4 | | | | | | |
|-----------|---|--|--|--|--|--|--|

GROUND FLOOR

WAREHOUSE 2



FOR PlanD SUBMISSION

FSI CONSULTANT:
MORAL WAY ENGINEERING LIMITED
 [REDACTED]
 [REDACTED]

PROJECT:
 LOTS NO. 797RP(PART), 799(PART), 800(PART), 801(PART), 809RP(PART) IN DD 126, & 3299RP(PART), 3300(PART), 3301, 3302(PART), 3303RP(PART), 3304RP(PART), 3305RP(PART), 3315RP(PART), 3316, 3317, 3323SA(PART), 3323SB(PART), 3324SAs1, 3324SAPP, 3324SBes1, 3324SBRP, 3325(PART), 3326SA, 3326RP IN DD 129, AND THE GOVERNMENT LAND ADJOURNING THERETO HA TSUEN, YUEN LONG, NEW TERRITORIES.

TITLE:
 FIRE SERVICE LAYOUT FOR WAREHOUSE 3 AND 5
 (EXTENSION OF APPLICATION FOR RNTPC PAPER NO.A/HSK/532)

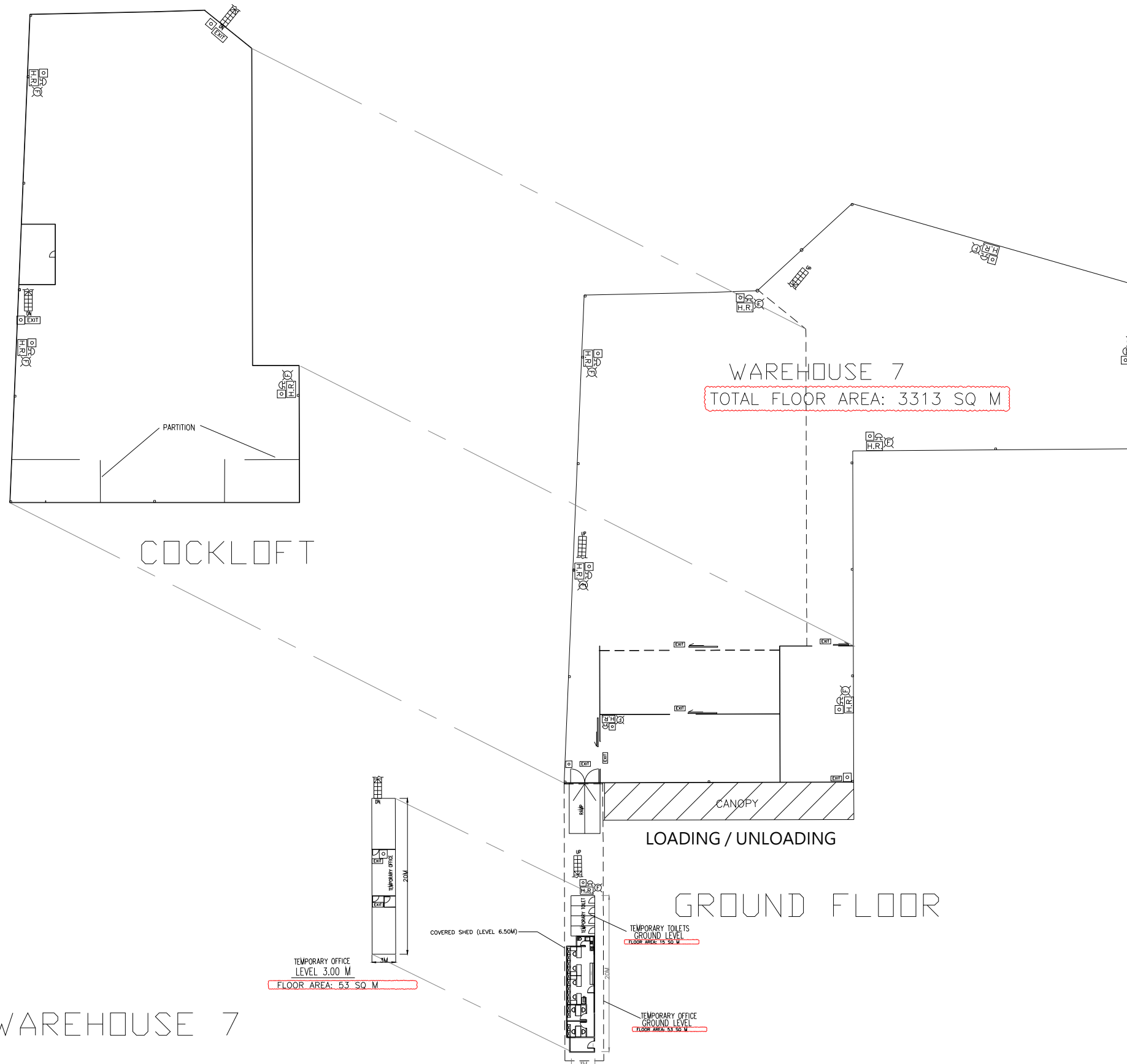
SCALE: 1:200 @A0
 DRAWN BY: STANLEY TSUI

DATE: 31-10-2024
 DESIGNED BY: HILLMAN LAU

DWG. NO: FS/05
 CHECKED BY: HILLMAN LAU

CONTRACT NO.: [REDACTED] 10

REVISION: 4



FOR PlanD SUBMISSION

FSI CONSULTANT:
MORAL WAY ENGINEERING LIMITED

[REDACTED]

PROJECT:
 LOTS NO. 797RP(PART), 799(PART), 800(PART), 801(PART), 809RP(PART) IN DD 126, & 3299RP(PART), 3300(PART), 3301, 3302(PART), 3303RP(PART), 3304RP(PART), 3305RP(PART), 3315RP(PART), 3316, 3317, 3323SA(PART), 3323SB(PART), 3324SAs1, 3324SAP, 3324SBes1, 3324SBRP, 3325(PART), 3326SA, 3326RP IN DD 129, AND THE GOVERNMENT LAND ADJOURNING THERETO HA TSUEN, YUEN LONG, NEW TERRITORIES.

TITLE:
 FIRE SERVICE LAYOUT FOR WAREHOUSE 7
 (EXTENSION OF APPLICATION FOR RNTPC PAPER NO.A/HSK/532)

SCALE: 1:200 @A0
 DRAWN BY: STANLEY TSUI

DATE: 31-10-2024
 DESIGNED BY: HILLMAN LAU

DWG. NO: FS/06
 CHECKED BY: HILLMAN LAU

CONTRACT NO.: SHEET: 10

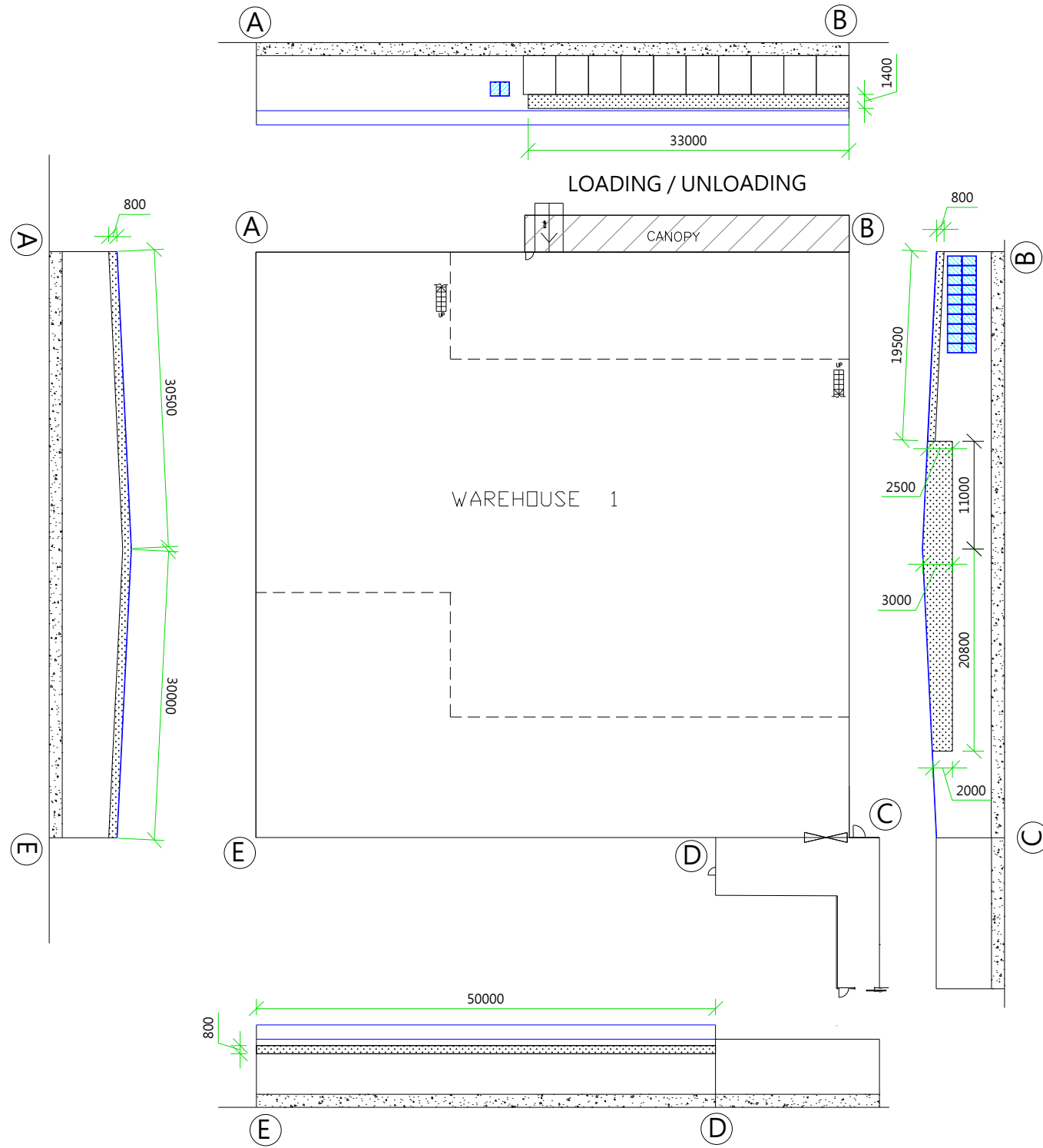
REVISION: 4

WAREHOUSE 7

WAREHOUSE 1

| | |
|--------------------------|---------------------------------|
| TOTAL FLOOR AREA | REQUIRED OPENABLE WINDOWS |
| AREA 3796 M ² | x 6.25% = 237.25 M ² |

| | | |
|--|---|---------------------------|
| OPENABLE WINDOWS | VENTILATION OPENING | PROVIDED OPENABLE WINDOWS |
| 1 M X 1.5 M = 1.5 M ² X 22 Nos. = 33 M ² | 0.8 M X 130 M = 104 M ² | = 265.45 M ² |
| | 1.4 M X 33 M = 46.2 M ² | |
| | (3+2.5) M X 11 M / 2 = 30.25 M ² | |
| | (3+2) M X 20.8 M / 2 = 52 M ² | |



WAREHOUSE 1

FOR PlanD SUBMISSION

FSI CONSULTANT:
MORAL WAY ENGINEERING LIMITED

[Redacted Name]

PROJECT:
LOTS NO. 797RP(PART), 799(PART), 800(PART), 801(PART), 809RP(PART) IN DD 126, & 3299RP(PART), 3300(PART), 3301, 3302(PART), 3303RP(PART), 3304RP(PART), 3305RP(PART), 3315RP(PART), 3316, 3317, 3323SA(PART), 3323SB(PART), 3324SAs1, 3324SAPP, 3324SBes1, 3324SBRP, 3325(PART), 3326SA, 3326RP IN DD 129, AND THE GOVERNMENT LAND ADJOURNING THERETO HA TSUEN, YUEN LONG, NEW TERRITORIES.

TITLE:
PROVISION OF OPENABLE WINDOW AREA WITH CALCULATION
(EXTENSION OF APPLICATION FOR RNTPC PAPER NO.A/HSK/316)

SCALE: 1:200 @A0
DRAWN BY: STANLEY TSUI

DATE: 31-10-2024
DESIGNED BY: HILLMAN LAU

DWG. NO: FS/07
CHECKED BY: HILLMAN LAU

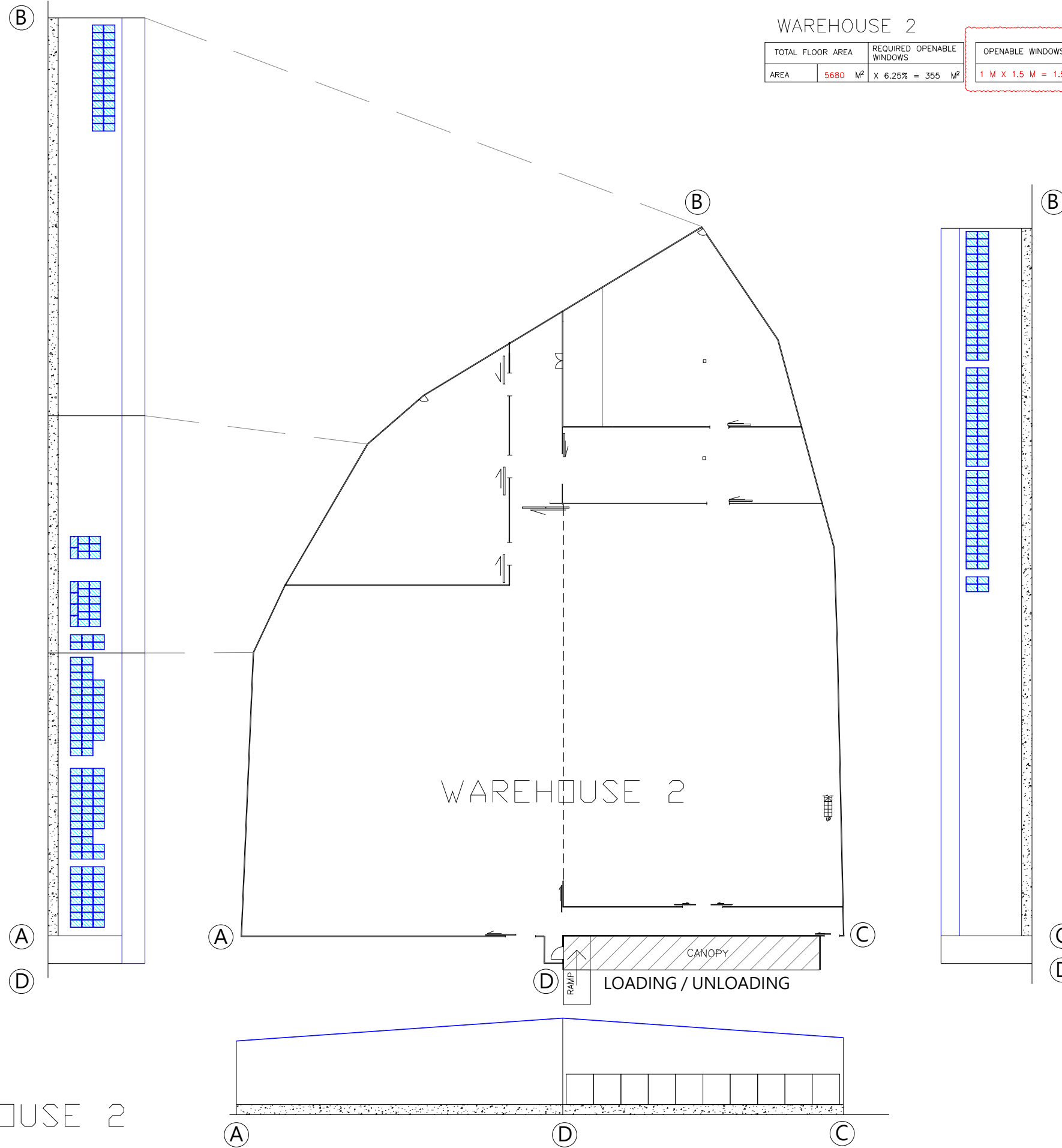
CONTRACT NO.: SHEET: 10

REVISION: 4

WAREHOUSE 2

| TOTAL FLOOR AREA | REQUIRED OPENABLE WINDOWS |
|--------------------------|------------------------------|
| AREA 5680 M ² | X 6.25% = 355 M ² |

| OPENABLE WINDOWS | PROVIDED OPENABLE WINDOWS |
|--|---------------------------|
| 1 M X 1.5 M = 1.5 M ² X 240 Nos. = 360 M ² | 360 M ² |



WAREHOUSE 2

FOR PlanD SUBMISSION

FSI CONSULTANT:
MORAL WAY ENGINEERING LIMITED

[Redacted Name]

PROJECT:
LOTS NO. 797RP(PART), 799(PART), 800(PART), 801(PART), 809RP(PART) IN DD 126, & 3299RP(PART), 3300(PART), 3301, 3302(PART), 3303RP(PART), 3304RP(PART), 3305RP(PART), 3315RP(PART), 3316, 3317, 3323SA(PART), 3323SB(PART), 3324SAs1, 3324SAPP, 3324SBs1, 3324SBRP, 3325(PART), 3326SA, 3326RP IN DD 129, AND THE GOVERNMENT LAND ADJOURNING THERETO HA TSUEN, YUEN LONG, NEW TERRITORIES.

TITLE:
PROVISION OF OPENABLE WINDOW AREA WITH CALCULATION

(EXTENSION OF APPLICATION FOR RNTPC PAPER NO.A/HSK/316)

| | |
|---------------------|---------------------------|
| SCALE: 1:200 @A0 | DRAWN BY: STANLEY TSUI |
|---------------------|---------------------------|

| | |
|---------------------|-----------------------------|
| DATE: 31-10-2024 | DESIGNED BY: HILLMAN LAU |
|---------------------|-----------------------------|

| | |
|-------------------|----------------------------|
| DWG. NO: FS/08 | CHECKED BY: HILLMAN LAU |
|-------------------|----------------------------|

| | |
|---------------|--------------|
| CONTRACT NO.: | SHEET: 10 |
|---------------|--------------|

| | | | | | | | |
|-----------|---|--|--|--|--|--|--|
| REVISION: | 4 | | | | | | |
|-----------|---|--|--|--|--|--|--|

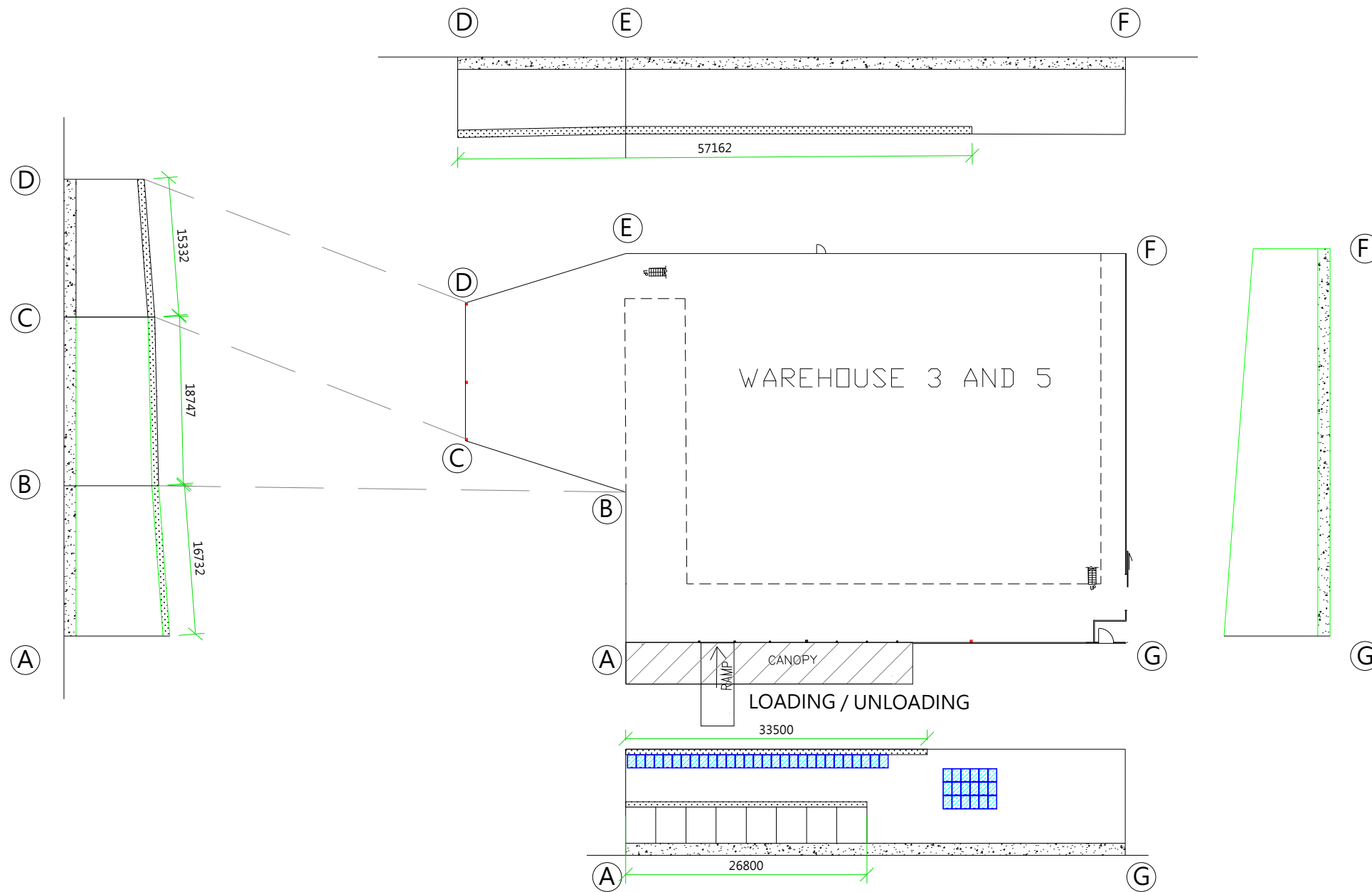
WAREHOUSE 3 AND 5

| | |
|--------------------------|--------------------------------|
| TOTAL FLOOR AREA | REQUIRED OPENABLE WINDOWS |
| AREA 2759 M ² | x 6.25% = 172.5 M ² |

| | |
|--|--|
| OPENABLE WINDOWS | |
| 1 M X 1.5 M = 1.5 M ² X 47 Nos. = 70.5 M ² | |

| | |
|---|--|
| VENTILATION OPENING | |
| 0.74 M X 168.273 M = 124.522 M ² | |

| |
|---------------------------|
| PROVIDED OPENABLE WINDOWS |
| = 195.022 M ² |



FOR PlanD SUBMISSION

FSI CONSULTANT:
MORAL WAY ENGINEERING LIMITED

[Redacted Name]

PROJECT:
LOTS NO. 797RP(PART), 799(PART), 800(PART), 801(PART), 809RP(PART) IN DD 126, & 3299RP(PART), 3300(PART), 3301, 3302(PART), 3303RP(PART), 3304RP(PART), 3305RP(PART), 3315RP(PART), 3316, 3317, 3323SA(PART), 3323SB(PART), 3324SAs1, 3324SAPP, 3324SBes1, 3324SBRP, 3325(PART), 3326SA, 3326RP IN DD 129, AND THE GOVERNMENT LAND ADJOURNING THERETO HA TSUEN, YUEN LONG, NEW TERRITORIES.

TITLE:
PROVISION OF OPENABLE WINDOW AREA WITH CALCULATION
(EXTENSION OF APPLICATION FOR RNTPC PAPER NO.A/HSK/316)

SCALE: 1:200 @A0
DRAWN BY: STANLEY TSUI

DATE: 31-10-2024
DESIGNED BY: HILLMAN LAU

DWG. NO: FS/09
CHECKED BY: HILLMAN LAU

CONTRACT NO.: SHEET: 10

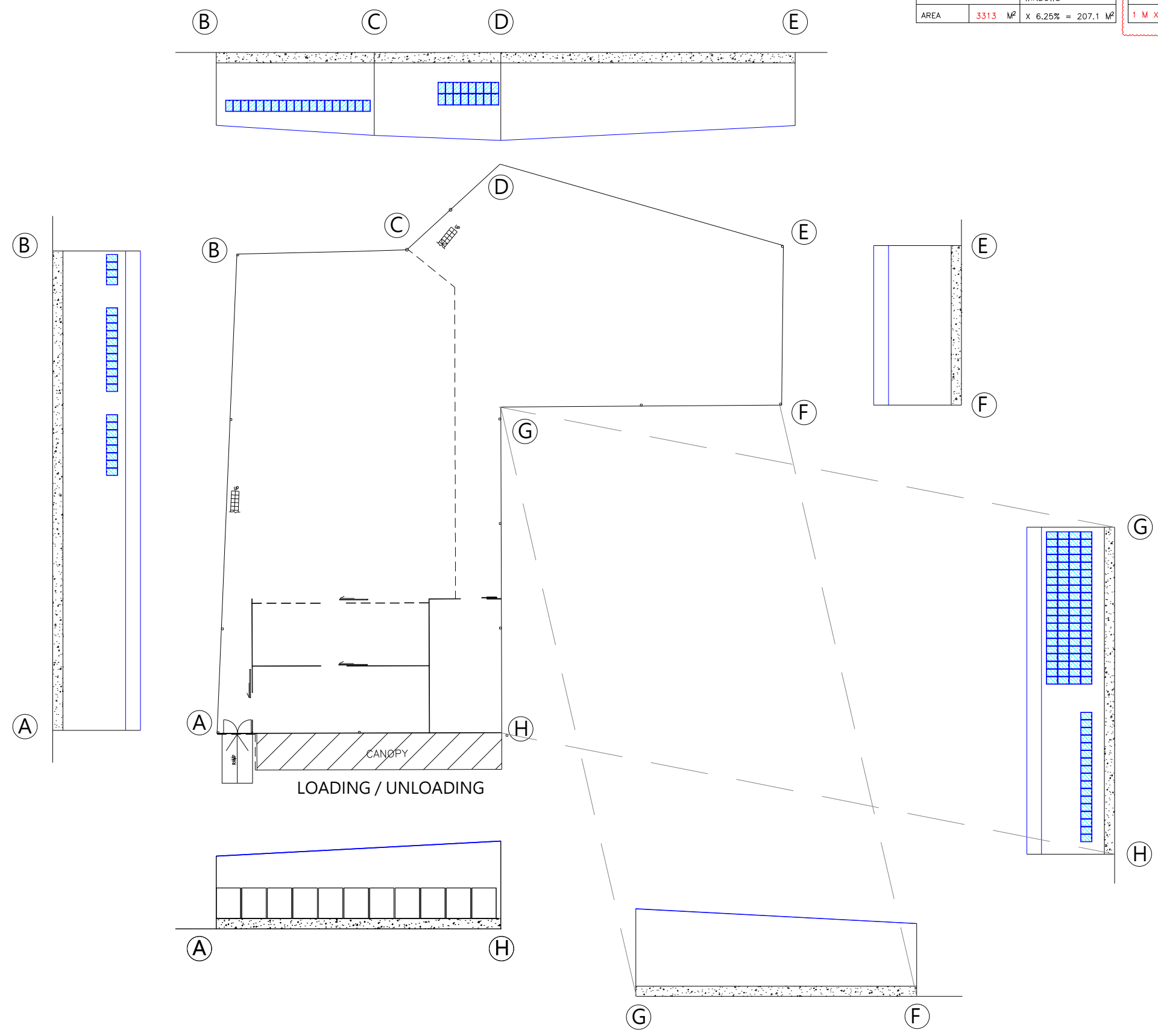
REVISION: 4

WAREHOUSE 3 AND 5

WAREHOUSE 7

| | |
|--------------------------|--------------------------------|
| TOTAL FLOOR AREA | REQUIRED OPENABLE WINDOWS |
| AREA 3313 M ² | X 6.25% = 207.1 M ² |

| | |
|---|---------------------------|
| OPENABLE WINDOWS | PROVIDED OPENABLE WINDOWS |
| 1 M X 1.5 M = 1.5 M ² X 155 Nos. = 232.5M ² | = 232.5 M ² |



FOR PlanD SUBMISSION

FSI CONSULTANT:
MORAL WAY ENGINEERING LIMITED

[Redacted Name]

PROJECT:
LOTS NO. 797RP(PART), 799(PART), 800(PART), 801(PART), 809RP(PART) IN DD 126, & 3299RP(PART), 3300(PART), 3301, 3302(PART), 3303RP(PART), 3304RP(PART), 3305RP(PART), 3315RP(PART), 3316, 3317, 3323SA(PART), 3323SB(PART), 3324SAs1, 3324SAPP, 3324SBes1, 3324SBRP, 3325(PART), 3326SA, 3326RP IN DD 129, AND THE GOVERNMENT LAND ADJOURNING THERETO HA TSUEN, YUEN LONG, NEW TERRITORIES.

TITLE:
PROVISION OF OPENABLE WINDOW AREA WITH CALCULATION
(EXTENSION OF APPLICATION FOR RNTPC PAPER NO.A/HSK/316)

SCALE: 1:200 @A0
DRAWN BY: STANLEY TSUI

DATE: 31-10-2024
DESIGNED BY: HILLMAN LAU

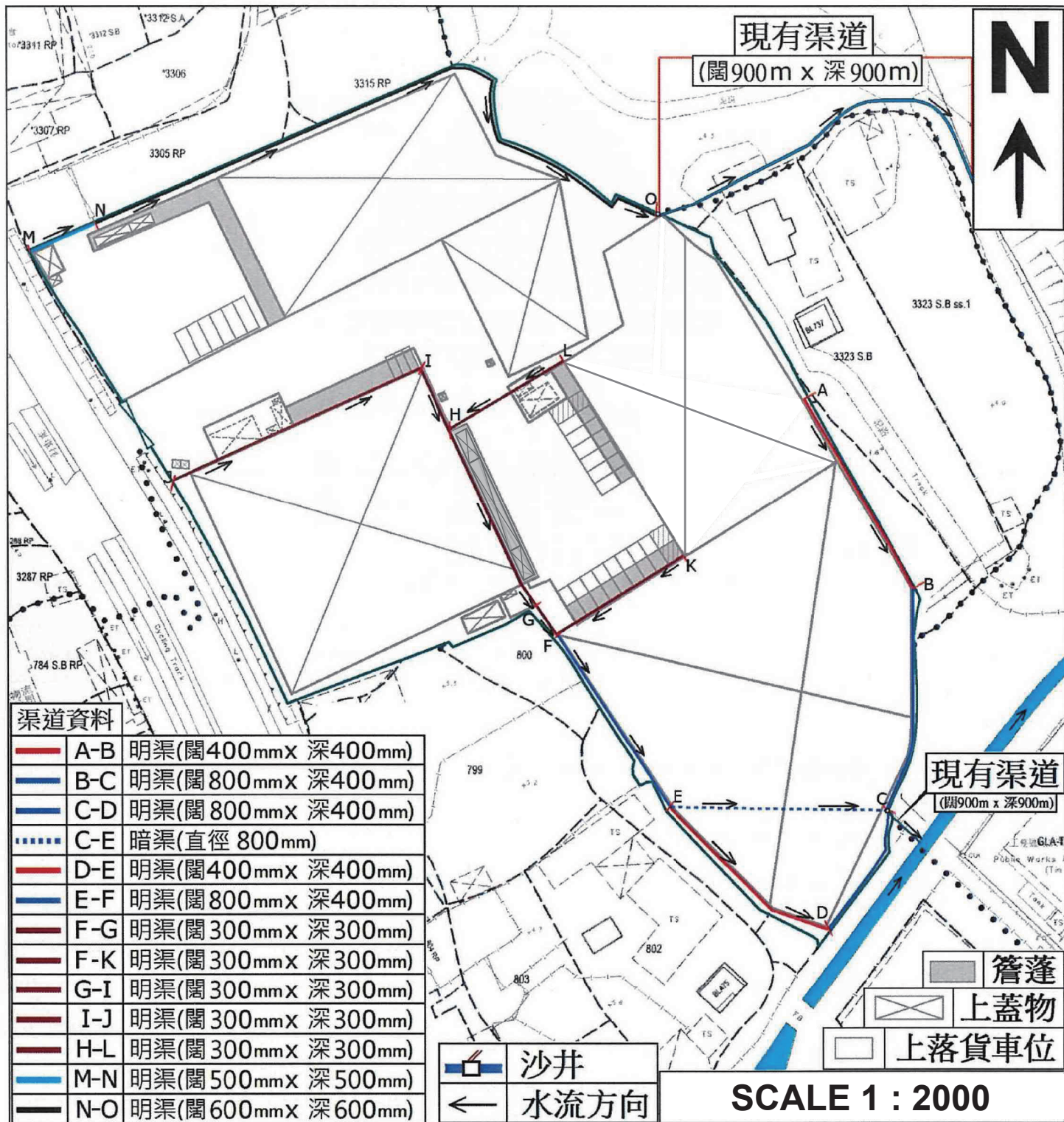
DWG. NO: FS/10
CHECKED BY: HILLMAN LAU

CONTRACT NO.: SHEET: 10

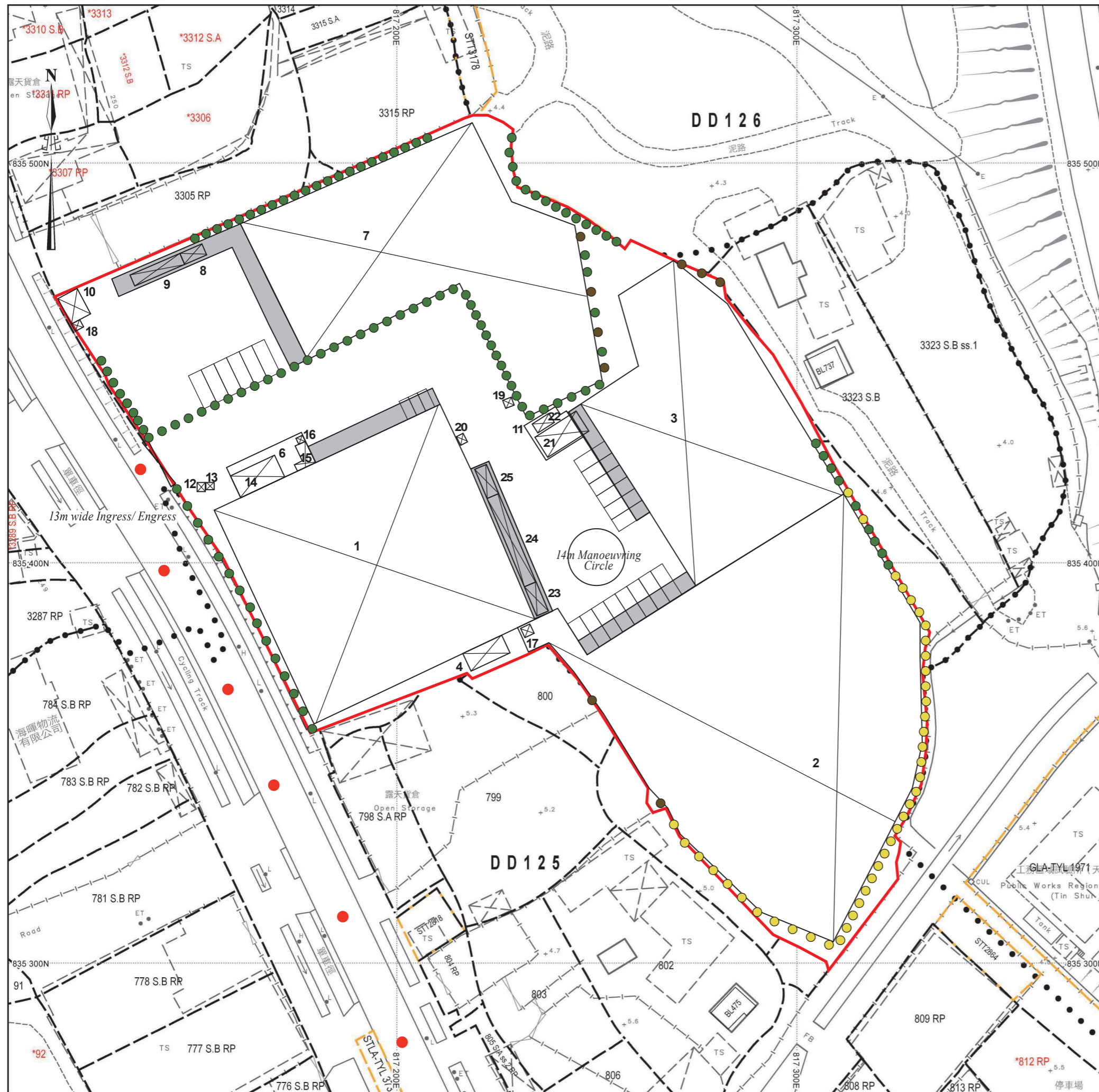
REVISION: 4

WAREHOUSE 7

渠務建議計劃圖



美化環境及保護樹木建議圖



- 細葉榕樹(119棵)(現有樹木)
- 白千層樹(41棵)(現有樹木)
- 雜樹(9棵)(現有樹木)
- 簷篷
- ● ● 行車路線

SCALE 1 : 1000