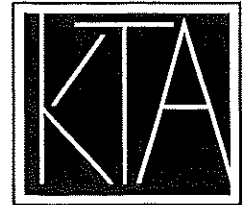


By Email

Our Ref: S3020b/13WSS_KC/23/004Lg

19 November 2024

Secretary, Town Planning Board
15/F, North Point Government Offices
333 Java Road
North Point
Hong Kong



PLANNING LIMITED
規劃顧問有限公司

UNIT K, 16/F, MG TOWER
133 HOI BUN ROAD, KWUN TONG
KOWLOON, HONG KONG

九龍觀塘海濱道133號
高兆豐中心16樓K室

電話TEL (852) 3426 8451
傳真FAX (852) 3426 9737

電郵EMAIL kta@ktaplanning.com

Dear Mr Leung,

**Proposed Concrete Batching Plant in "Industrial" zone
at Nos.13- 17 Wah Sing Street, Kwai Chung
- Section 16 Planning Application -**

Reference is made to the captioned S16 Planning Application submitted to the Town Planning Board ("TPB") on 31 October 2024 and the various telephone conversations earlier.

Please find attached a replacement page of the Supporting Planning Statement and an updated G/F Plan (to indicated the locations of different internal transport facilities) as per your request.

Meanwhile, should you have any queries in relation to the attached, please do not hesitate to contact Mr Kenneth To or the undersigned at [REDACTED].

Thank you for your kind attention.

Yours faithfully
For and on behalf of
KTA PLANNING LIMITED

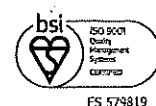
A handwritten signature in black ink, appearing to read 'Gladys Ng', written over the typed name.

Gladys Ng

Encl.

cc. the Applicant & Team

KT/GN/vy



FS 579819



Table 3.1 Major Development Parameters

Proposed Concrete Batching Plant	
Site Area	1,777.608m ²
Site Coverage	Not more than 69%
Gross Floor Area	About 10,500m ²
Plot Ratio	About 5.9
Maximum Building Height	62.5mPD
Internal Transport Facilities	
No. of Concrete Mixer Truck Waiting Spaces	2
Raw material unloading bay for container	1
Concrete mixer truck loading point	4

3.2 Operation Process

3.2.1 The concrete production process involves three major steps, which are (1) delivery of raw materials, (2) materials weighing and mixing, and (3) loading and distribution of ready-mixed concrete with their details provided below:

- Step 1: Delivery of Raw Materials

Majority of the raw materials such as cement, other cementitious materials (such as pulverized fuel ash (PFA)), aggregates, etc. will be delivered by specific vehicles.

Conveyors of the proposed CBP for the transfer of aggregates will be enclosed and water spraying by sprinklers will be turned on during the unloading operation.

Cement and other cementitious materials will be also delivered by tankers. These materials will be pumped to the overhead silos through pipes. The loading, transfer and storage of the materials will be carried out in an enclosed system. Each silo should be equipped with a dust collector to treat the waste gas generated during the loading of the materials to silos.

- Step 2: Materials Weighing and Mixing

All raw materials, cement, aggregate, water and admixtures will be weighed in hoppers in proper proportion and then discharged into a mixer for concrete production.

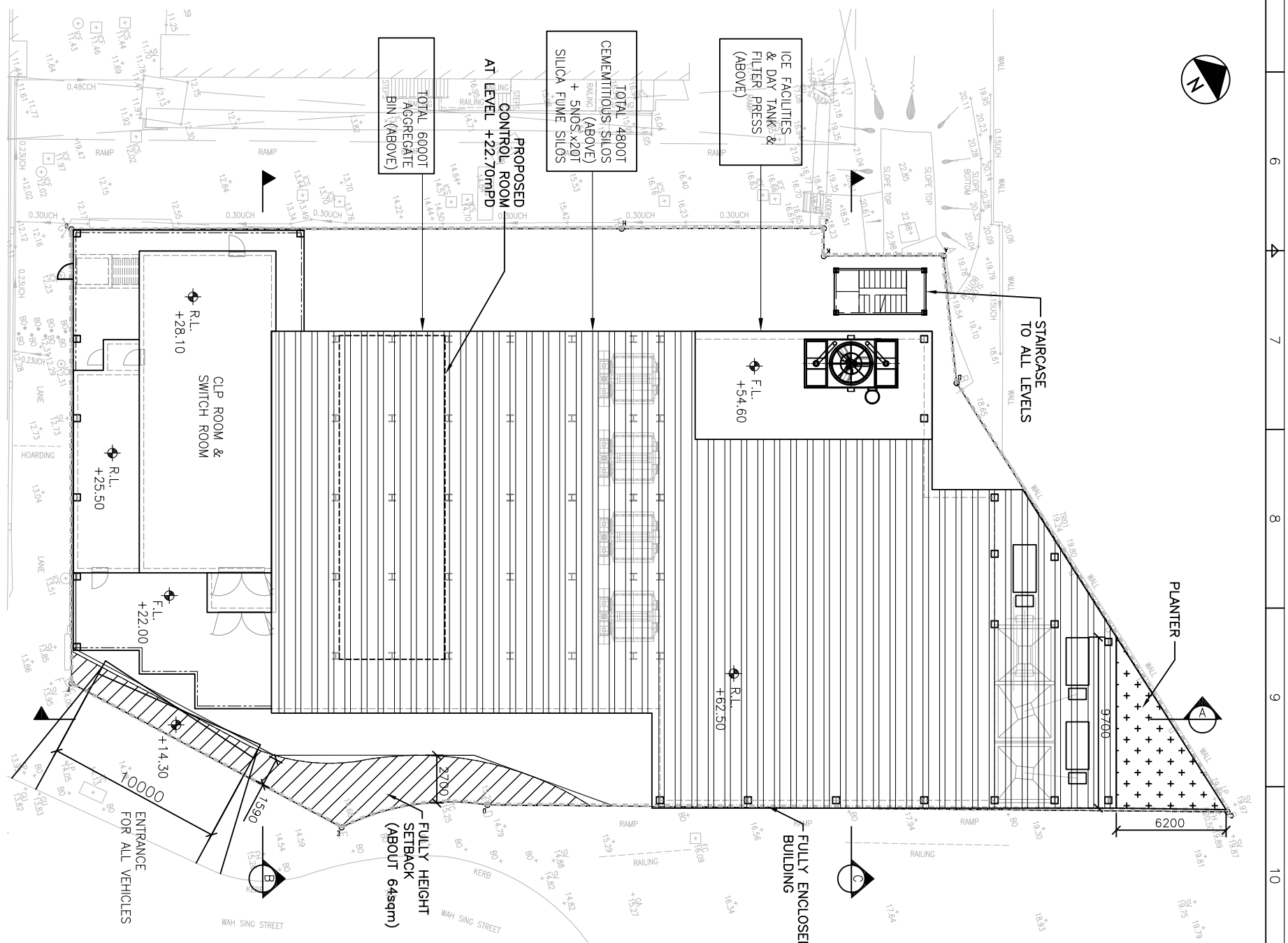
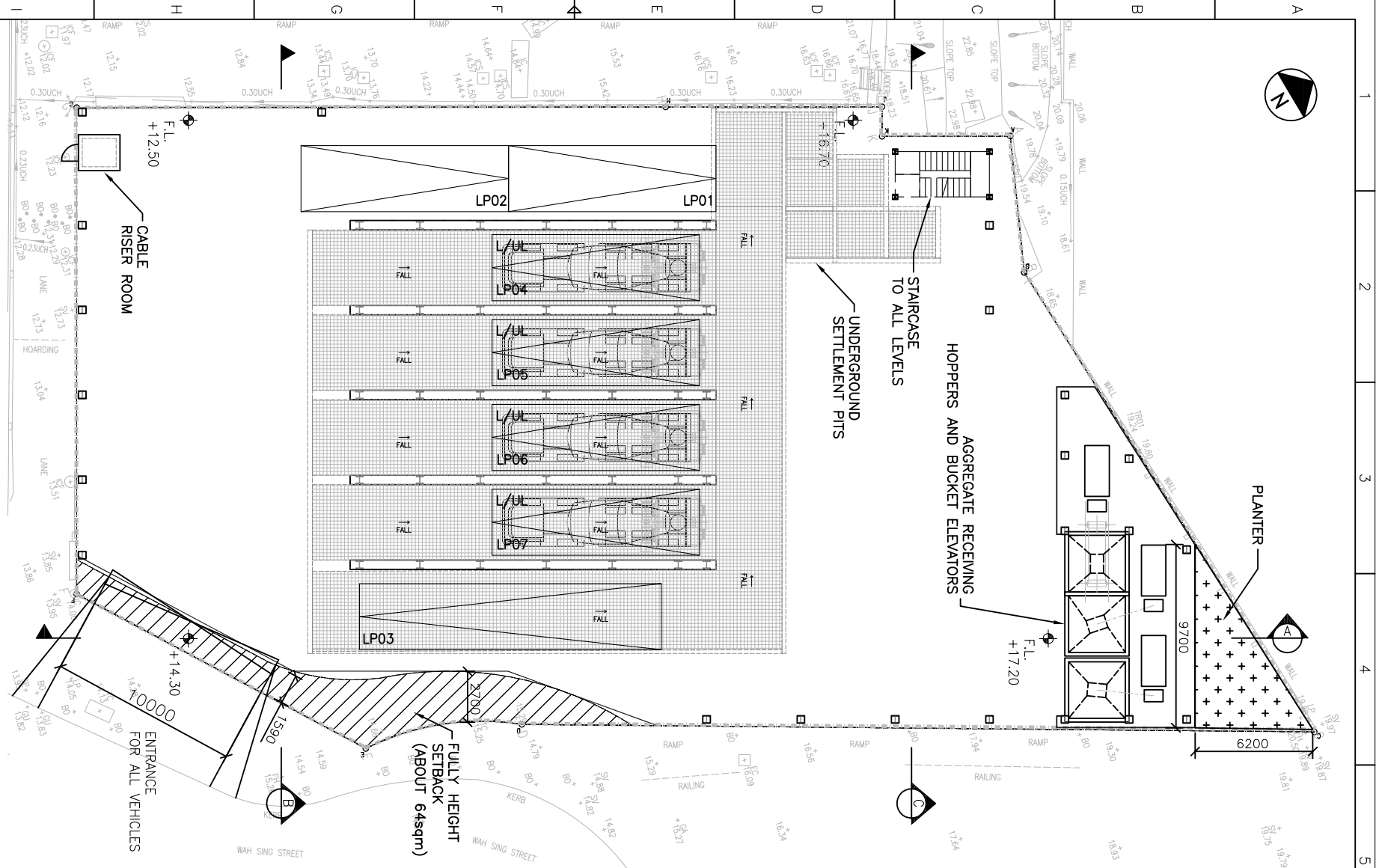
Weighing hoppers and mixers will normally be housed inside an enclosed environment.

- Step 3: Product Loading and Distribution

The produced concrete will be discharged into concrete mixer trucks (CMTs) by gravity via wet concrete guiding chute.

GROUND FLOOR PLAN

FLOOR PLAN@+22.00/+25.50/+28.10/+54.60/+62.50



- LEGEND**
- FULL-HEIGHT SETBACK (ABOUT 64sqm)
 - LOT BOUNDARY
 - CORRUGATED SHEET
 - UNDERGROUND SETTLEMENT PIT WITH COVER
 - PLANTER
 - RAILING
 - PROPOSED FINISH ROOF LEVEL
 - PROPOSED FINISH FLOOR LEVEL
 - EXISTING LEVEL
 - WAITING SPACE
 - RAW MATERIAL UNLOADING BAY FOR CONTAINER
 - CONCRETE MIXER TRUCK LOADING POINT

- LP04 TO LP07 CONCRETE MIXER TRUCK LOADING POINT 11m(L)x3.5m(W) x4.7m(H)
- LP03 RAW MATERIAL UNLOADING BAY FOR CONTAINER 16m(L)x3.5m(W) x4.7m(H)
- LP01 & LP02 WAITING SPACE 11m(L)x3.5m(W) x4.7m(H)
- 17.64 EXISTING LEVEL
- F.L. PROPOSED FINISH FLOOR LEVEL
- R.L. PROPOSED FINISH ROOF LEVEL
- RAILING
- PLANTER
- UNDERGROUND SETTLEMENT PIT WITH COVER
- CORRUGATED SHEET
- LOT BOUNDARY
- FULL-HEIGHT SETBACK (ABOUT 64sqm)

1. ALL DIMENSIONS TO BE IN MM UNLESS NOTED OTHERWISE.

REV	DESCRIPTION	DATE	APPROVED	BY
A	TYPE SUBMISSION	14/10/23		
B	LEGEND AMENDED	19/11/24		

DESIGNED	LAWRENCE
CHECKED	-
APPROVED	-
DATE	2023-12-05

EDWIN LAI INTERNATIONAL LTD.
 403, KWONG FAT COMM. BLDG.,
 582, CANTON ROAD, KOWLOON, HONG KONG.
 Tel: (852) 27701387 Fax: (852) 27800706

SOUNDWILL
 KWAI CHUNG PROPOSED BATCHING PLANT
 GENERAL LAYOUT PLAN

SCALE AS SHOWN (A3)
 DRAWING NO. SW-KC-CBP-GP-01
 JOB NO. XXX
 REV. B