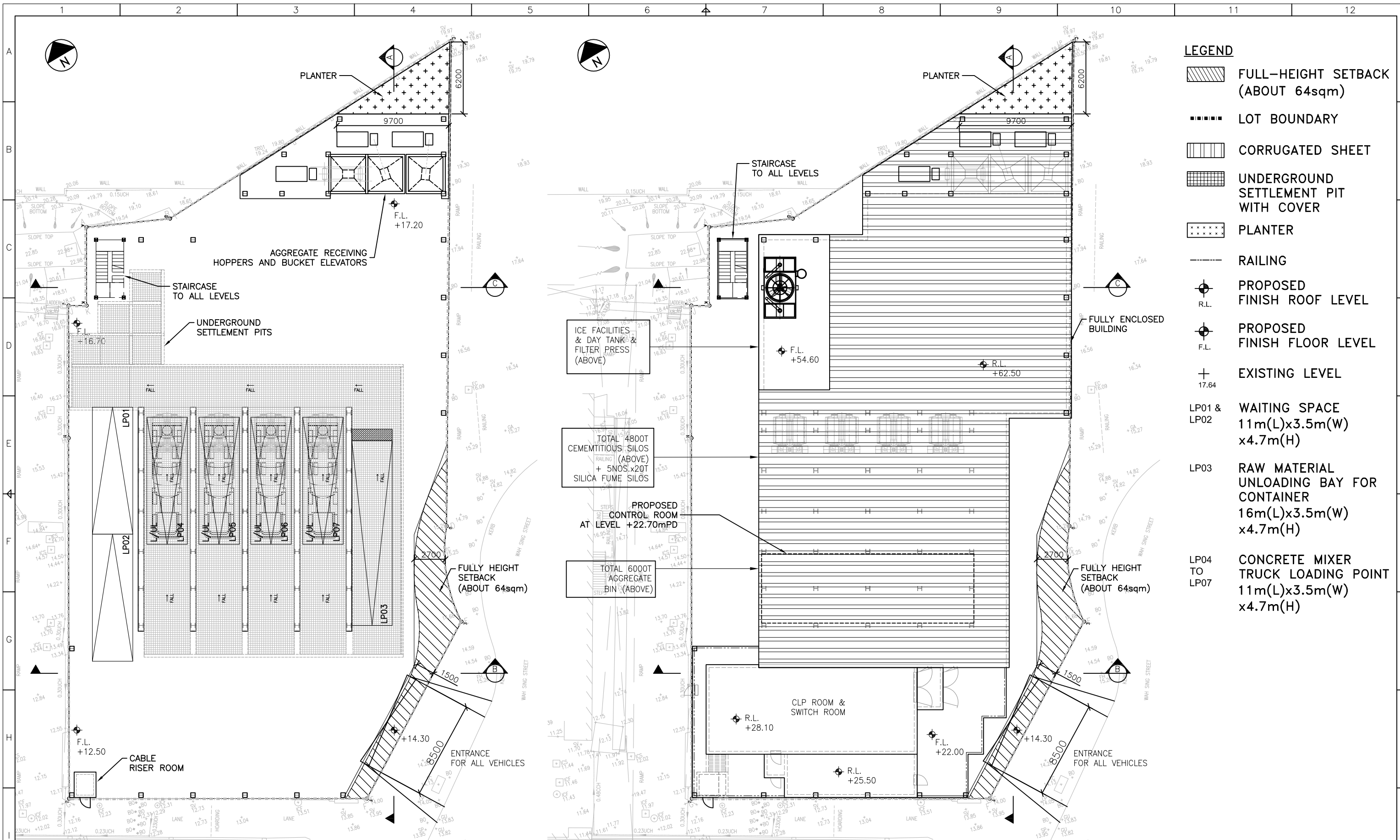


**Proposed Concrete Batching Plant in “Industrial” Zone
at Nos.13- 17 Wah Sing Street, Kwai Chung
S16 Planning Application**

(Planning Application No: A/KC/509)

Appendix IV

Updated Architectural Drawings



- LEGEND**
- FULL-HEIGHT SETBACK (ABOUT 64sqm)
 - LOT BOUNDARY
 - CORRUGATED SHEET
 - UNDERGROUND SETTLEMENT PIT WITH COVER
 - PLANTER
 - RAILING
 - PROPOSED FINISH ROOF LEVEL
 - PROPOSED FINISH FLOOR LEVEL
 - EXISTING LEVEL
 - 17.64
 - LP01 & LP02 WAITING SPACE 11m(L)x3.5m(W) x4.7m(H)
 - LP03 RAW MATERIAL UNLOADING BAY FOR CONTAINER 16m(L)x3.5m(W) x4.7m(H)
 - LP04 TO LP07 CONCRETE MIXER TRUCK LOADING POINT 11m(L)x3.5m(W) x4.7m(H)

GROUND FLOOR PLAN

FLOOR PLAN@+22.00/+25.50/+28.10/+54.60/+62.50

1. ALL DIMENSIONS TO BE IN MM UNLESS NOTED OTHERWISE.

REV	DESCRIPTION	BY	DATE	APPROVED
C	AMENDED REGARDING THE COMMENTS	LL	22/01/23	
B	LEGEND AMENDED	LL	19/11/24	
A	TPB SUBMISSION	LL	14/10/24	

DRAWN	LAWRENCE
DESIGNED	-
CHECKED	-
APPROVED	-
DATE	2023-12-05

ELIL EDWIN LAI INTERNATIONAL LTD.
 403, KWONG FAT COMM. BLDG.,
 582, CANTON ROAD, KOWLOON, HONG KONG.
 Tel: (852) 27701387 Fax: (852) 27800706

TITLE **SOUNDWILL**
KWAI CHUNG PROPOSED BATCHING PLANT
 -
GENERAL LAYOUT PLAN
 -

SCALE **AS SHOWN (A3)** DRAWING NO. **SW-KC-CBP-GP-01** JOB NO. **XXX** REV. **C**