

Appendix I: Tree Survey

1. Introduction

The survey conducted is to record all the existing trees in the tree survey boundary. The survey include tree species identification, Diameter at Breast Height (DBH), general and health conditions. The tree survey was conducted on 29th January, 2024. Plants with DBH less than 95mm were not recorded in the survey

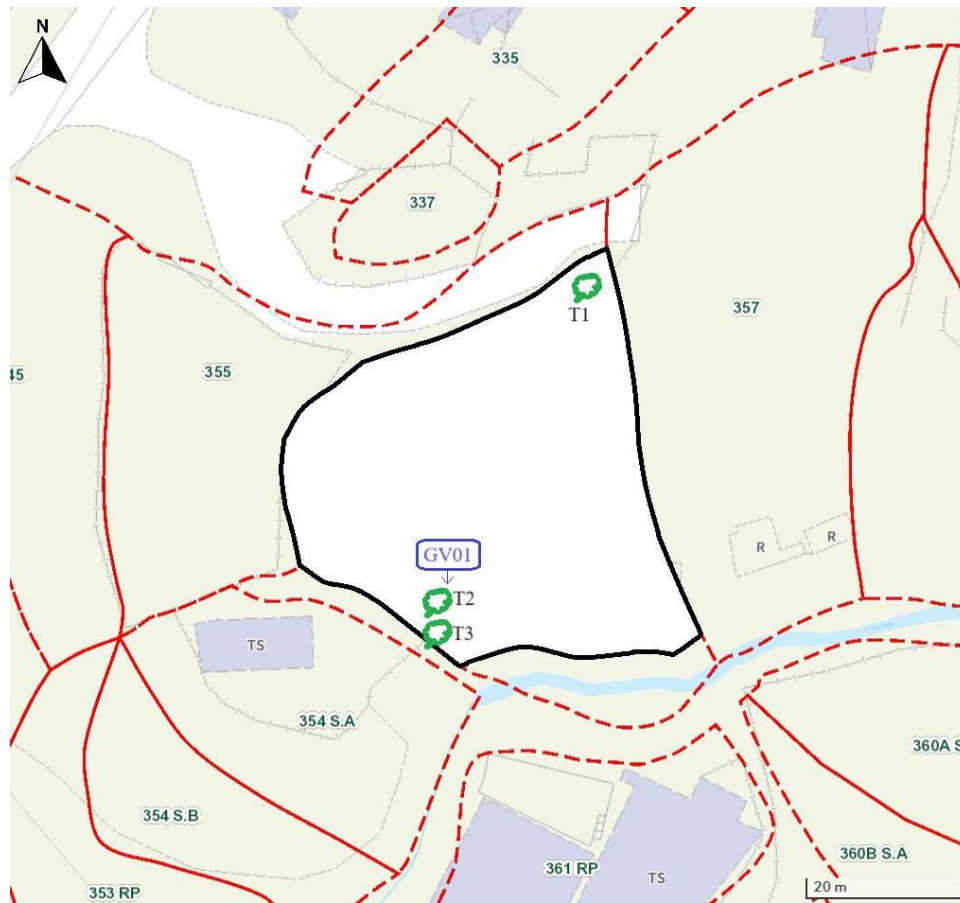
2. Summary of Existing Trees

The surveyed site is located at Lot 356 in D.D. 87, Fu Tei Au, New Territories.

At the time of inspection on 29th January, 2024, 3 nos. tree were found within the Site. No dead tree was recorded in the surveyed area. Location of individual tree refers to Appendix I.

Details of tree conditions and photo records for individual tree are recorded in the Appendix II and Appendix III respectively.

Appendix I



Legend

-  Surveved Tree
-  General View

Appendix II

Tree	Species	DBH	General Condition	Health Condition
T1	Senna Siamea	330	Common tree, leaning, covered with vines	Fair
T2	Senna Siamea	660	Common tree, on a slope, main trunk on it's side, with 4 stem growing from it, wounded	Poor
T3	Macaranga tanarius	130	Invasive, undesirable species	Fair

Figure 1: Tree T1

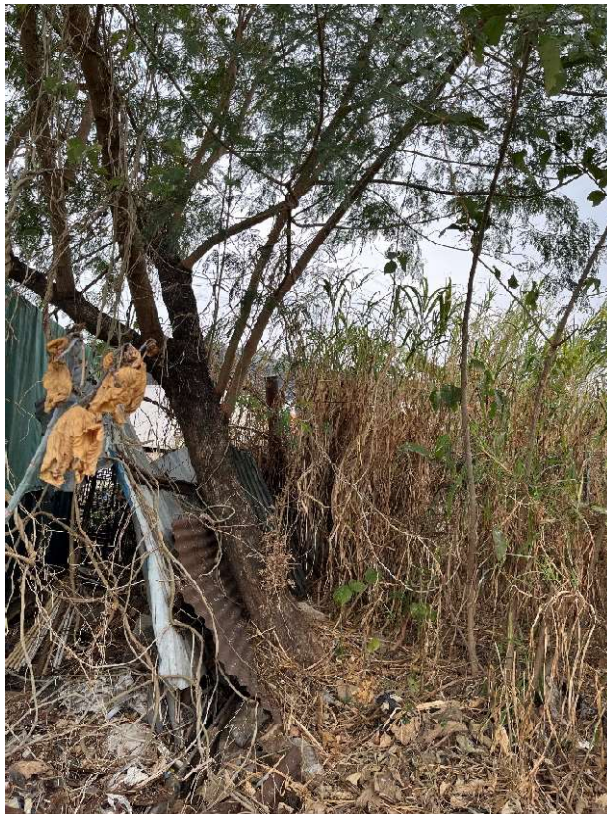


Figure 2: Tree T2



Figure 2a: Tree T2



Figure 3: Tree T3



Figure 4 General View 01

