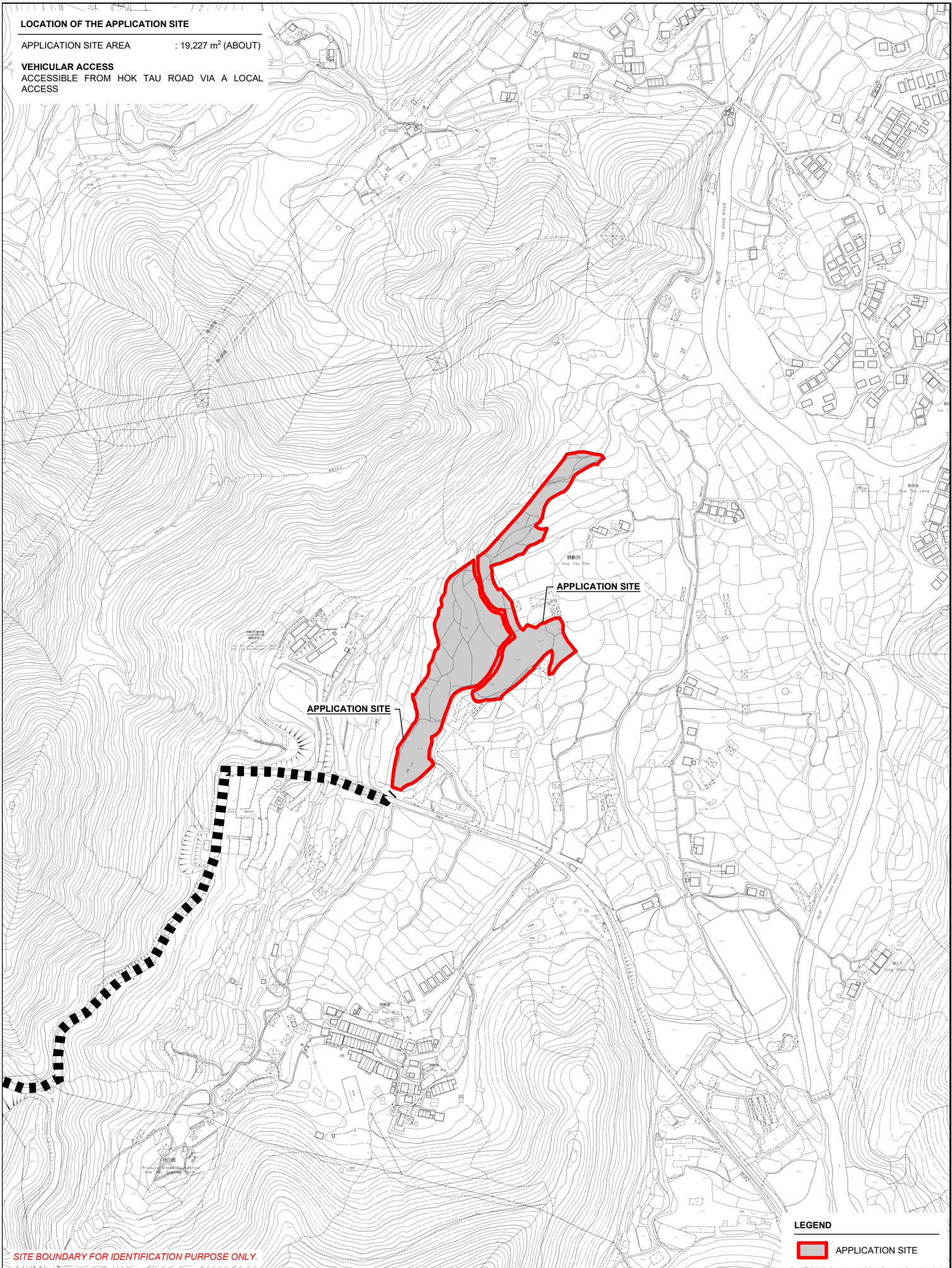


**LOCATION OF THE APPLICATION SITE**

APPLICATION SITE AREA : 19,227 m<sup>2</sup> (ABOUT)

**VEHICULAR ACCESS**  
ACCESSIBLE FROM HOK TAU ROAD VIA A LOCAL ACCESS



*SITE BOUNDARY FOR IDENTIFICATION PURPOSE ONLY.*

**LEGEND**

 APPLICATION SITE

PLANNING CONSULTANT



PROJECT

PROPOSED TEMPORARY PLACE OF RECREATION, SPORTS OR CULTURE (HORSE RIDING CENTRE AND BARBECUE SITE) AND HOLIDAY CAMP WITH ANCILLARY FACILITIES FOR A PERIOD OF 3 YEARS AND ASSOCIATED FILLING OF LAND

ADDRESS

VARIOUS LOTS IN D.D. 76 AND ADJOINING GOVERNMENT LAND, HOK TAU, FANLING, NEW TERRITORIES

SCALE  
1 : 5000 @ A4

DRAWN BY  
MN

DATE  
31.7.2024

REVISED BY

DATE

TITLE  
LOCATION PLAN

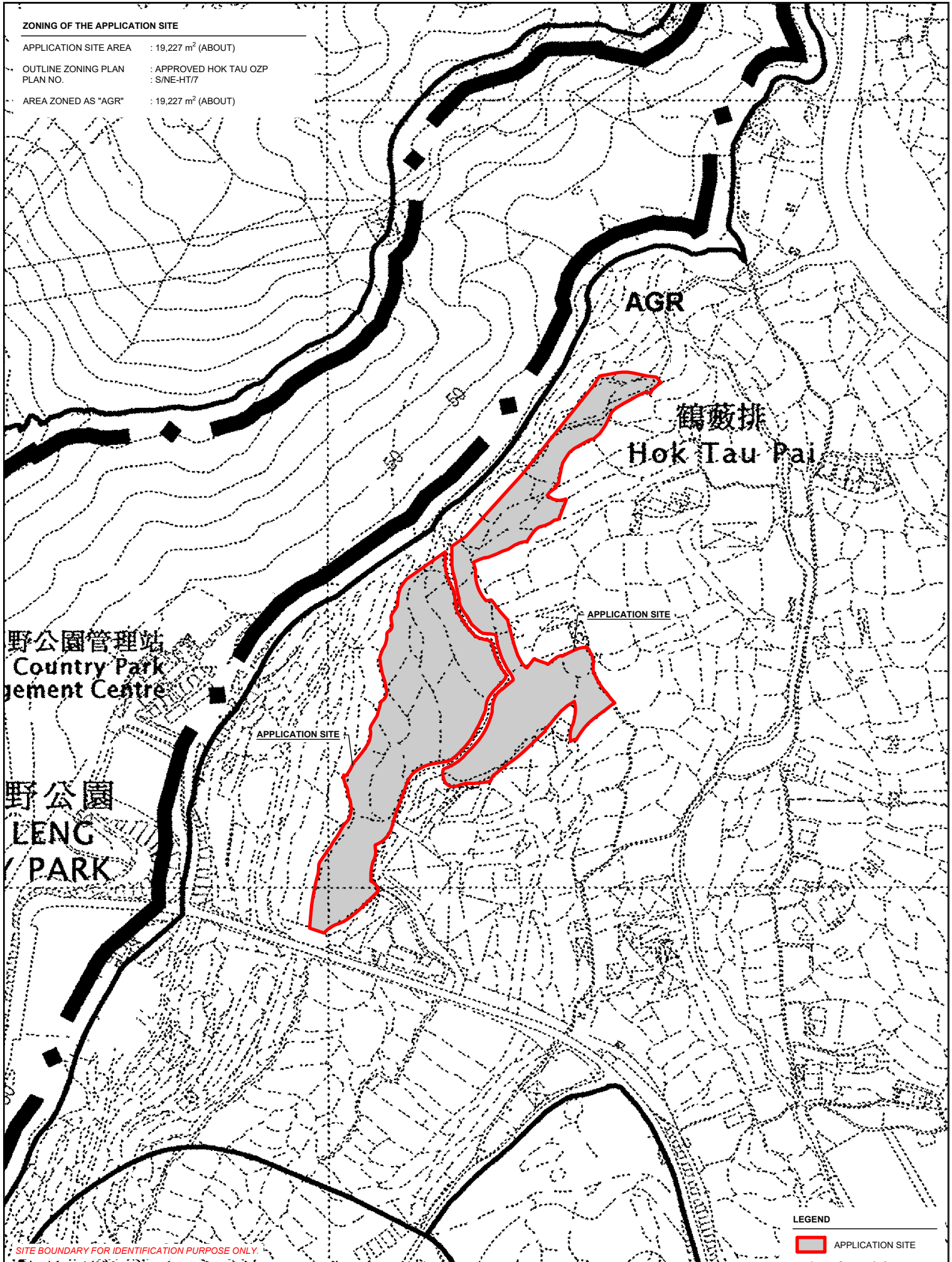
DWG NO.  
PLAN 1

VER.  
001



**ZONING OF THE APPLICATION SITE**

APPLICATION SITE AREA : 19,227 m<sup>2</sup> (ABOUT)  
 OUTLINE ZONING PLAN : APPROVED HOK TAU OZP  
 PLAN NO. : S/NE-HT/7  
 AREA ZONED AS "AGR" : 19,227 m<sup>2</sup> (ABOUT)



SITE BOUNDARY FOR IDENTIFICATION PURPOSE ONLY.

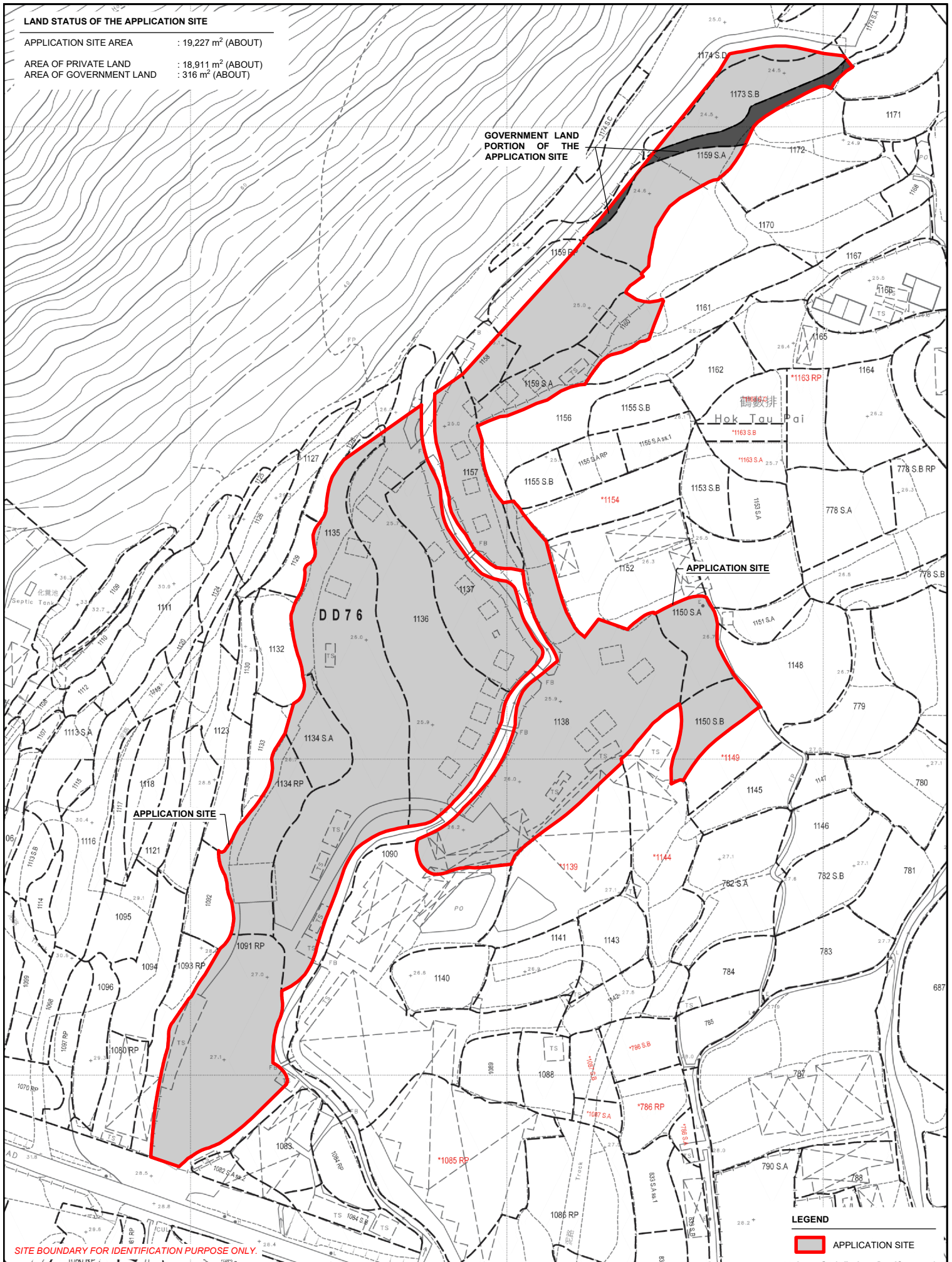
**LEGEND**

APPLICATION SITE

	PROJECT PROPOSED TEMPORARY PLACE OF RECREATION, SPORTS OR CULTURE (HORSE RIDING CENTRE AND BARBECUE SITE) AND HOLIDAY CAMP WITH ANCILLARY FACILITIES FOR A PERIOD OF 3 YEARS AND ASSOCIATED FILLING OF LAND	ADDRESS VARIOUS LOTS IN D.D. 76 AND ADJOINING GOVERNMENT LAND, HOK TAU, FANLING, NEW TERRITORIES	SCALE 1 : 3000 @ A4		TITLE ZONING PLAN	
			DRAWN BY MN	DATE 31.7.2024	DWG NO. PLAN 2	VER. 001
PLANNING CONSULTANT			REVISED BY	DATE		

**LAND STATUS OF THE APPLICATION SITE**

APPLICATION SITE AREA : 19,227 m<sup>2</sup> (ABOUT)  
 AREA OF PRIVATE LAND : 18,911 m<sup>2</sup> (ABOUT)  
 AREA OF GOVERNMENT LAND : 316 m<sup>2</sup> (ABOUT)



GOVERNMENT LAND PORTION OF THE APPLICATION SITE

APPLICATION SITE

SITE BOUNDARY FOR IDENTIFICATION PURPOSE ONLY.

LEGEND  
 APPLICATION SITE

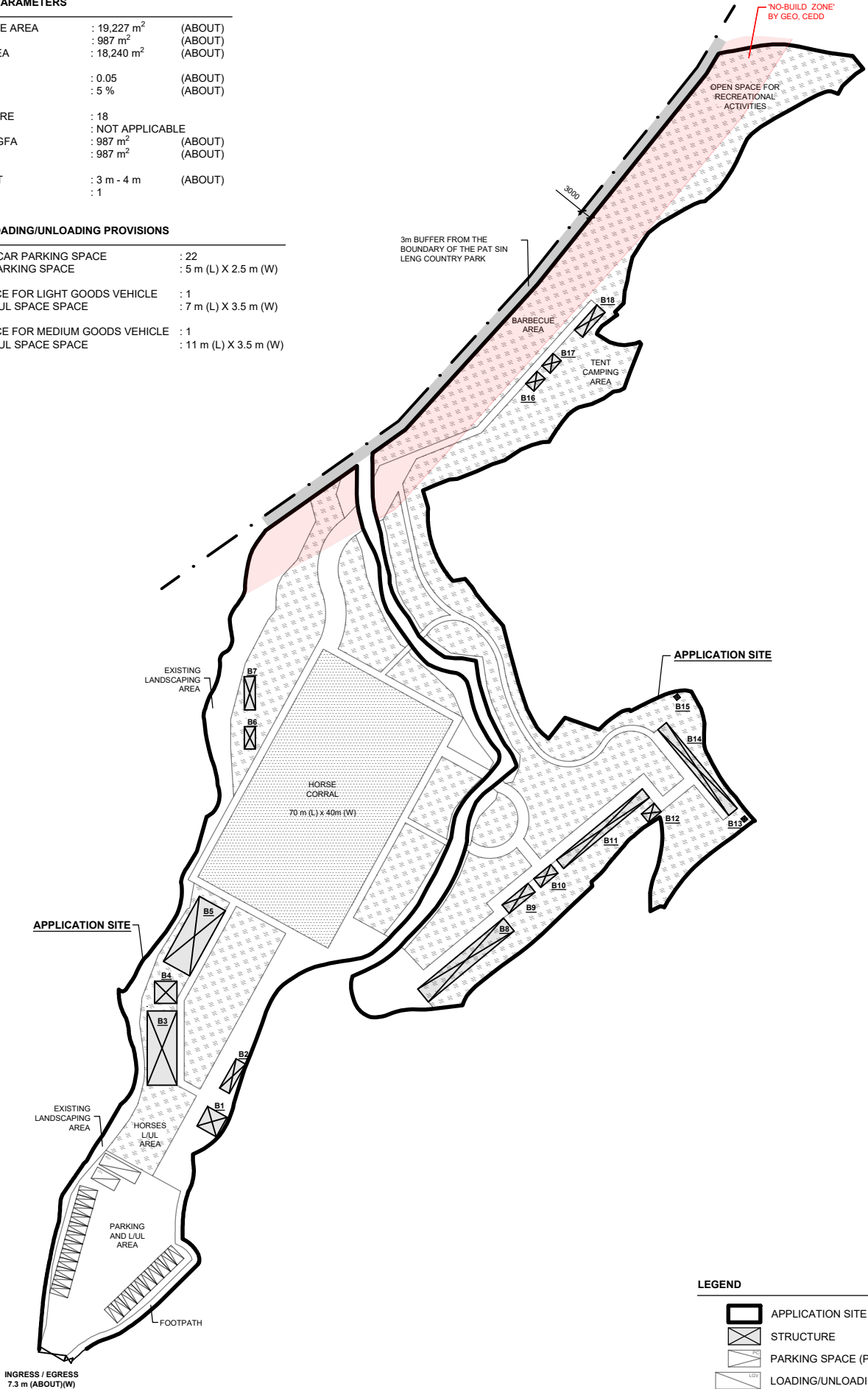
	PROJECT PROPOSED TEMPORARY PLACE OF RECREATION, SPORTS OR CULTURE (HORSE RIDING CENTRE AND BARBECUE SITE) AND HOLIDAY CAMP WITH ANCILLARY FACILITIES FOR A PERIOD OF 3 YEARS AND ASSOCIATED FILLING OF LAND	ADDRESS VARIOUS LOTS IN D.D. 76 AND ADJOINING GOVERNMENT LAND, HOK TAU, FANLING, NEW TERRITORIES	SCALE 1 : 1500 @ A4	TITLE LAND STATUS	
	DRAWN BY MN	DATE 31.7.2024	REVISED BY DATE	DWG NO. PLAN 3	

**DEVELOPMENT PARAMETERS**

APPLICATION SITE AREA	: 19,227 m <sup>2</sup>	(ABOUT)
COVERED AREA	: 987 m <sup>2</sup>	(ABOUT)
UNCOVERED AREA	: 18,240 m <sup>2</sup>	(ABOUT)
PLOT RATIO	: 0.05	(ABOUT)
SITE COVERAGE	: 5 %	(ABOUT)
NO. OF STRUCTURE	: 18	
DOMESTIC GFA	: NOT APPLICABLE	
NON-DOMESTIC GFA	: 987 m <sup>2</sup>	(ABOUT)
TOTAL GFA	: 987 m <sup>2</sup>	(ABOUT)
BUILDING HEIGHT	: 3 m - 4 m	(ABOUT)
NO. OF STOREY	: 1	

**PARKING AND LOADING/UNLOADING PROVISIONS**

NO. OF PRIVATE CAR PARKING SPACE	: 22
DIMENSION OF PARKING SPACE	: 5 m (L) X 2.5 m (W)
NO. OF L/U/L SPACE FOR LIGHT GOODS VEHICLE	: 1
DIMENSION OF L/U/L SPACE SPACE	: 7 m (L) X 3.5 m (W)
NO. OF L/U/L SPACE FOR MEDIUM GOODS VEHICLE	: 1
DIMENSION OF L/U/L SPACE SPACE	: 11 m (L) X 3.5 m (W)



**LEGEND**

- APPLICATION SITE
- STRUCTURE
- PARKING SPACE (PC)
- LOADING/UNLOADING SPACE (LGV)
- LOADING/UNLOADING SPACE (MGV)
- INGRESS / EGRESS

PLANNING CONSULTANT 	PROJECT PROPOSED TEMPORARY PLACE OF RECREATION, SPORTS OR CULTURE (HORSE RIDING CENTRE AND BARBECUE SITE) AND HOLIDAY CAMP WITH ANCILLARY FACILITIES FOR A PERIOD OF 3 YEARS AND ASSOCIATED FILLING OF LAND	ADDRESS VARIOUS LOTS IN D.D. 76 AND ADJOINING GOVERNMENT LAND, HOK TAU, FANLING, NEW TERRITORIES	SCALE 1 : 1500 @ A4	TITLE LAYOUT PLAN	
			DRAWN BY MN	DATE 31.7.2024	DWG NO. PLAN 4



STRUCTURE	USE	COVERED AREA	GFA	BUILDING HEIGHT
B1	STORAGE OF TOOLS	36 m <sup>2</sup> (ABOUT)	36 m <sup>2</sup> (ABOUT)	3 m (ABOUT)(1-STOREY)
B2	STORAGE OF TOOLS	27 m <sup>2</sup> (ABOUT)	27 m <sup>2</sup> (ABOUT)	3 m (ABOUT)(1-STOREY)
B3	RECEPTION AND SITE OFFICE	160 m <sup>2</sup> (ABOUT)	160 m <sup>2</sup> (ABOUT)	3.5 m (ABOUT)(1-STOREY)
B4	REFRESHMENT KIOSK AND WASHROOM	36 m <sup>2</sup> (ABOUT)	36 m <sup>2</sup> (ABOUT)	3.5 m (ABOUT)(1-STOREY)
B5	RECREATIONAL ACTIVITIES ROOM	160 m <sup>2</sup> (ABOUT)	160 m <sup>2</sup> (ABOUT)	3.5 m (ABOUT)(1-STOREY)
B6	STORAGE OF MISCELLANEOUS GOODS	18 m <sup>2</sup> (ABOUT)	18 m <sup>2</sup> (ABOUT)	3 m (ABOUT)(1-STOREY)
B7	WASHROOM	27 m <sup>2</sup> (ABOUT)	27 m <sup>2</sup> (ABOUT)	3 m (ABOUT)(1-STOREY)
B8	STORAGE OF HORSE SUPPLIES	135 m <sup>2</sup> (ABOUT)	135 m <sup>2</sup> (ABOUT)	4 m (ABOUT)(1-STOREY)
B9	CHANGING ROOM AND STORAGE OF TOOLS	27 m <sup>2</sup> (ABOUT)	27 m <sup>2</sup> (ABOUT)	3 m (ABOUT)(1-STOREY)
B10	WASHROOM	18 m <sup>2</sup> (ABOUT)	18 m <sup>2</sup> (ABOUT)	3 m (ABOUT)(1-STOREY)
B11	STABLE	135 m <sup>2</sup> (ABOUT)	135 m <sup>2</sup> (ABOUT)	4 m (ABOUT)(1-STOREY)
B12	STORAGE OF TOOLS	14 m <sup>2</sup> (ABOUT)	14 m <sup>2</sup> (ABOUT)	3 m (ABOUT)(1-STOREY)
B13	METER ROOM	2 m <sup>2</sup> (ABOUT)	2 m <sup>2</sup> (ABOUT)	3 m (ABOUT)(1-STOREY)
B14	STABLE	135 m <sup>2</sup> (ABOUT)	135 m <sup>2</sup> (ABOUT)	4 m (ABOUT)(1-STOREY)
B15	METER ROOM	2 m <sup>2</sup> (ABOUT)	2 m <sup>2</sup> (ABOUT)	3 m (ABOUT)(1-STOREY)
B16	WASHROOM	14 m <sup>2</sup> (ABOUT)	14 m <sup>2</sup> (ABOUT)	3 m (ABOUT)(1-STOREY)
B17	CHANGING ROOM	14 m <sup>2</sup> (ABOUT)	14 m <sup>2</sup> (ABOUT)	3 m (ABOUT)(1-STOREY)
B18	STORAGE OF BARBECUE PITS AND TOOLS	27 m <sup>2</sup> (ABOUT)	27 m <sup>2</sup> (ABOUT)	3 m (ABOUT)(1-STOREY)
<b>TOTAL</b>		<b>987 m<sup>2</sup> (ABOUT)</b>	<b>987 m<sup>2</sup> (ABOUT)</b>	

PLANNING CONSULTANT



PROJECT

PROPOSED TEMPORARY PLACE OF RECREATION, SPORTS OR CULTURE (HORSE RIDING CENTRE AND BARBECUE SITE) AND HOLIDAY CAMP WITH ANCILLARY FACILITIES FOR A PERIOD OF 3 YEARS AND ASSOCIATED FILLING OF LAND

SITE LOCATION

VARIOUS LOTS IN D.D. 76 AND ADJOINING GOVERNMENT LAND, HOK TAU, FANLING, NEW TERRITORIES

SCALE

N/A

DRAWN BY	DATE
MN	31.7.2024

REVISED BY	DATE

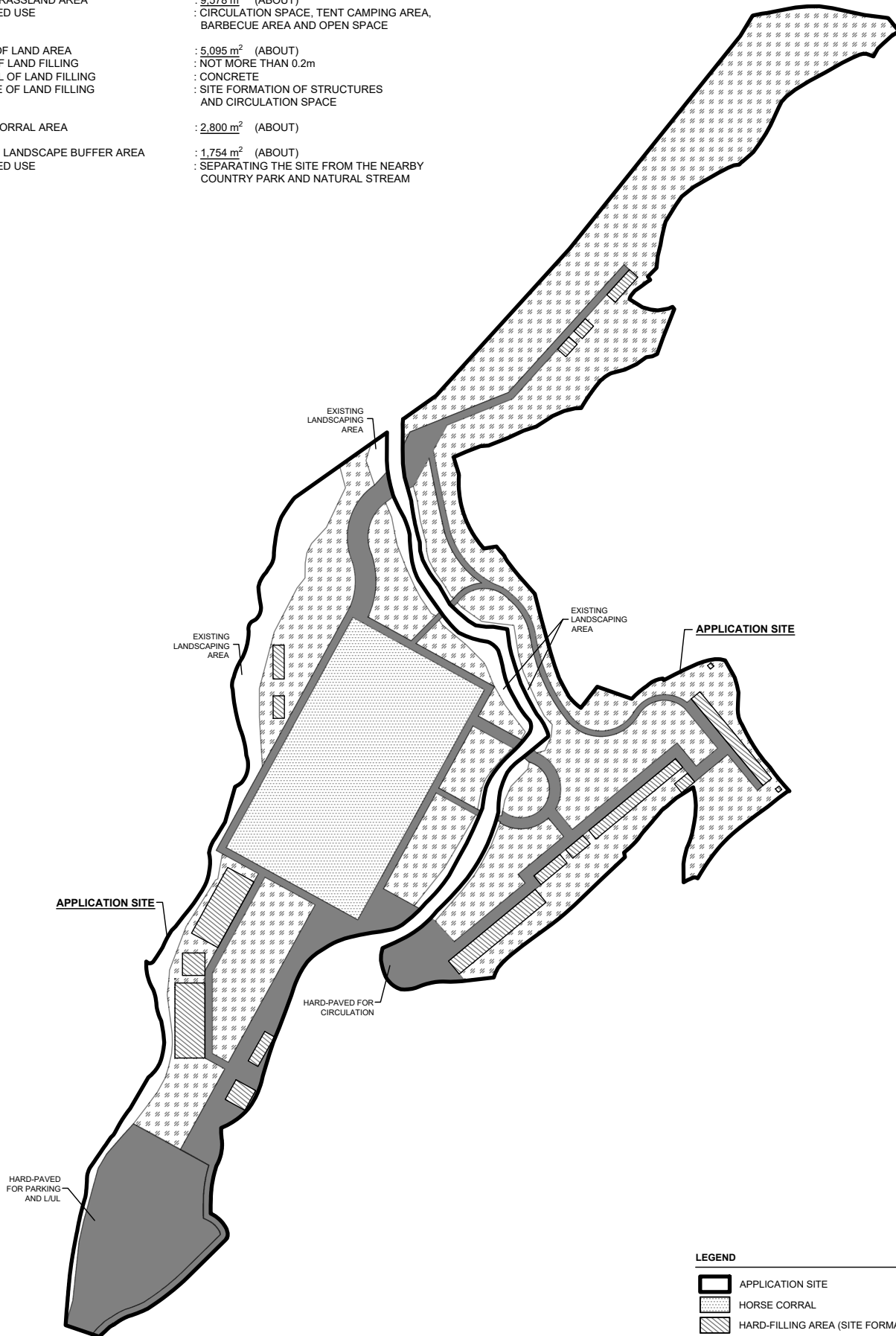
APPROVED BY	DATE

DWG. TITLE  
DETAILS OF STRUCTURES

DWG. NO.	VER.
PLAN 5	001

**PAVED RATIO OF THE APPLICATION SITE**

APPLICATION SITE AREA	: 19,227 m <sup>2</sup> (ABOUT)
LAWN / GRASSLAND AREA	: 9,578 m <sup>2</sup> (ABOUT)
PROPOSED USE	: CIRCULATION SPACE, TENT CAMPING AREA, BARBECUE AREA AND OPEN SPACE
FILLING OF LAND AREA	: 5,095 m <sup>2</sup> (ABOUT)
DEPTH OF LAND FILLING	: NOT MORE THAN 0.2m
MATERIAL OF LAND FILLING	: CONCRETE
PURPOSE OF LAND FILLING	: SITE FORMATION OF STRUCTURES AND CIRCULATION SPACE
HORSE CORRAL AREA	: 2,800 m <sup>2</sup> (ABOUT)
EXISTING LANDSCAPE BUFFER AREA	: 1,754 m <sup>2</sup> (ABOUT)
PROPOSED USE	: SEPARATING THE SITE FROM THE NEARBY COUNTRY PARK AND NATURAL STREAM



**LEGEND**

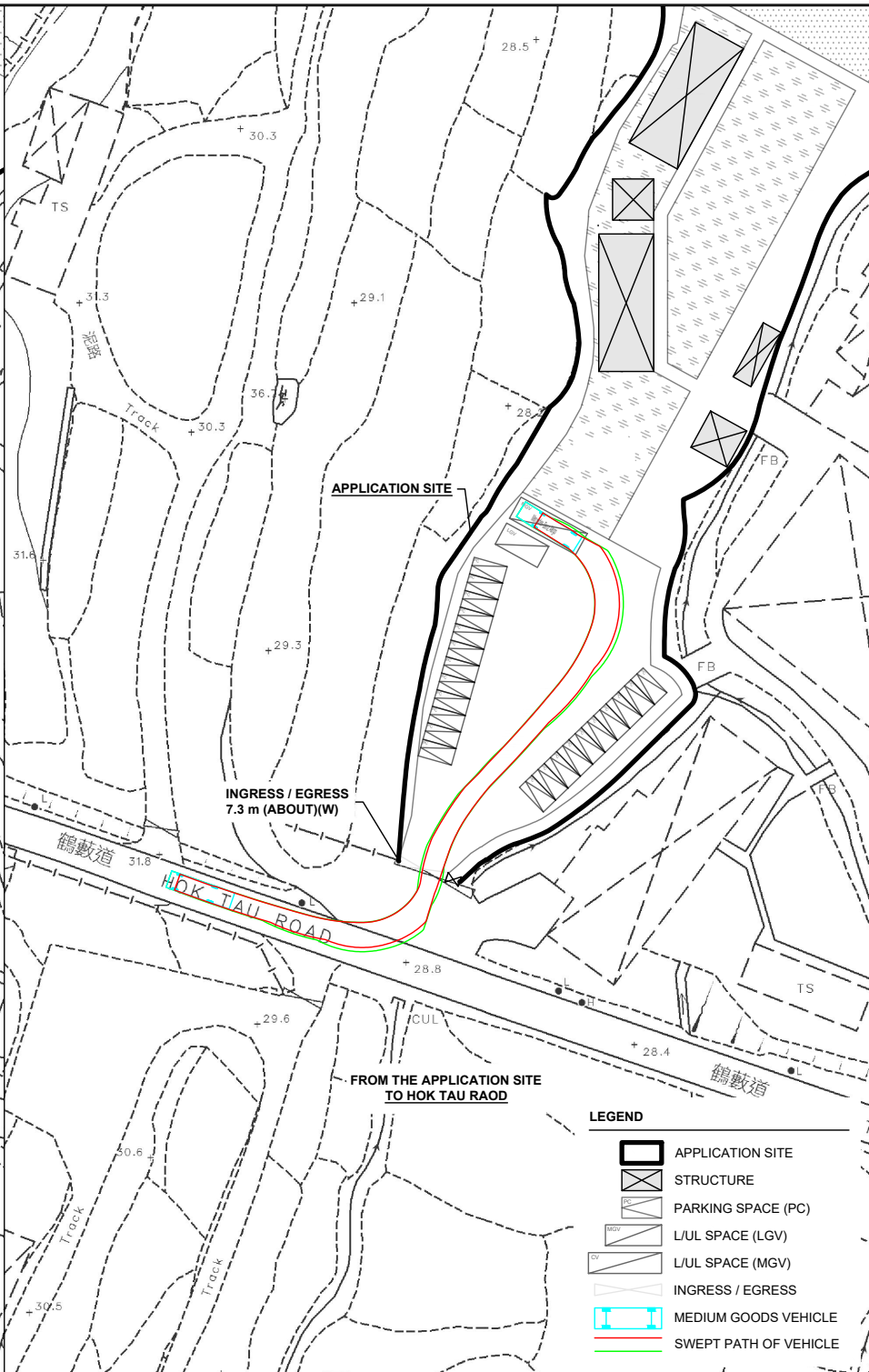
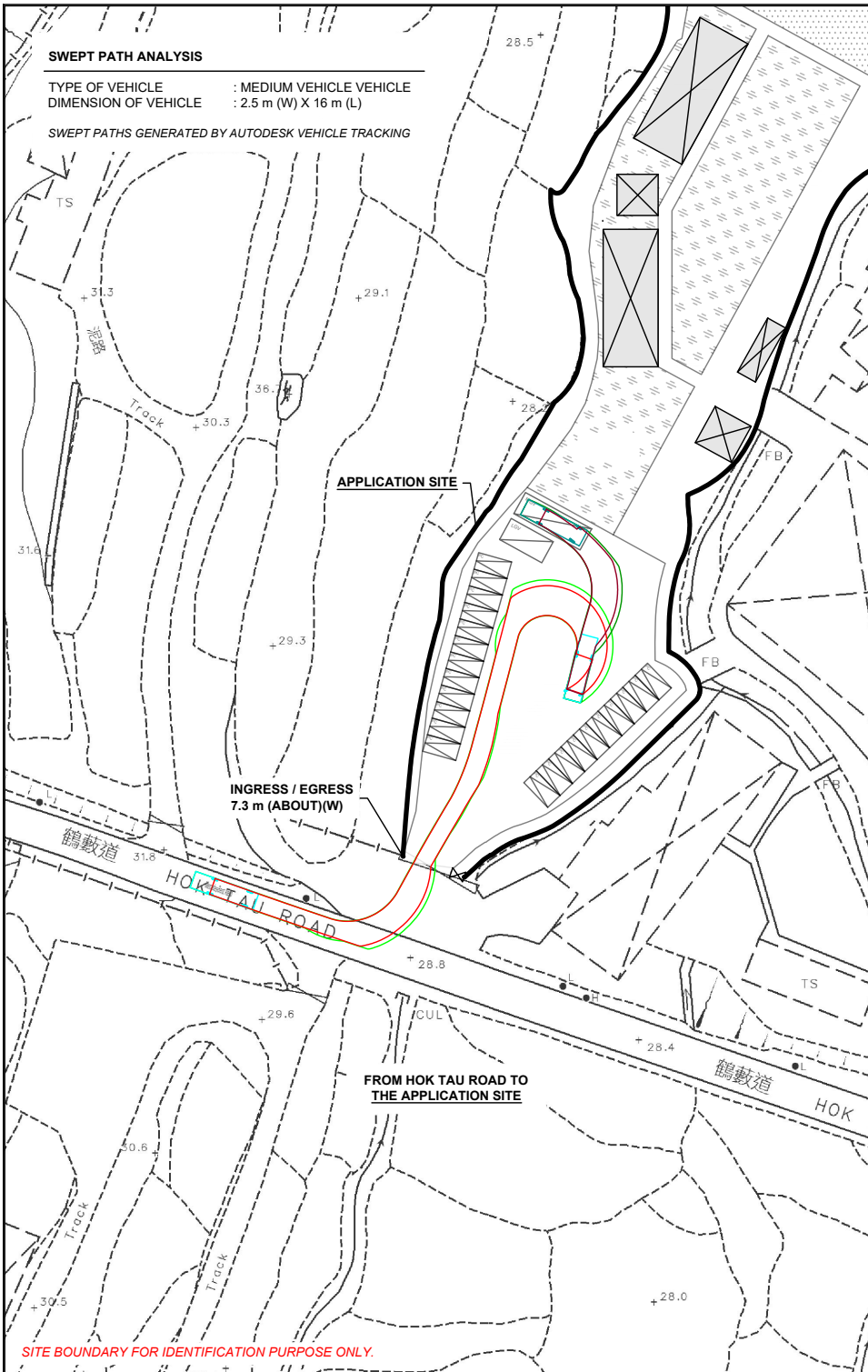
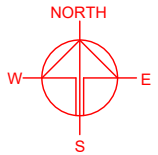
	APPLICATION SITE
	HORSE CORRAL
	HARD-FILLING AREA (SITE FORMATION OF STRUCTURE)
	HARD-FILLING AREA (CIRCULATION SPACE)
	LAWN AREA
	EXISTING LANDSCAPE BUFFER AREA

PLANNING CONSULTANT 	PROJECT PROPOSED TEMPORARY PLACE OF RECREATION, SPORTS OR CULTURE (HORSE RIDING CENTRE AND BARBECUE SITE) AND HOLIDAY CAMP WITH ANCILLARY FACILITIES FOR A PERIOD OF 3 YEARS AND ASSOCIATED FILLING OF LAND	ADDRESS VARIOUS LOTS IN D.D. 76 AND ADJOINING GOVERNMENT LAND, HOK TAU, FANLING, NEW TERRITORIES	SCALE 1 : 1500 @ A4	TITLE FILLING OF LAND		
			DRAWN BY MN	DATE 31.7.2024	DWG NO. PLAN 6	
		REVISED BY DATE				

**SWEPT PATH ANALYSIS**

TYPE OF VEHICLE : MEDIUM VEHICLE  
 DIMENSION OF VEHICLE : 2.5 m (W) X 16 m (L)

SWEPT PATHS GENERATED BY AUTODESK VEHICLE TRACKING



INGRESS / EGRESS  
7.3 m (ABOUT)(W)

INGRESS / EGRESS  
7.3 m (ABOUT)(W)

FROM HOK TAU ROAD TO  
THE APPLICATION SITE

FROM THE APPLICATION SITE  
TO HOK TAU ROAD

SITE BOUNDARY FOR IDENTIFICATION PURPOSE ONLY.

**LEGEND**

	APPLICATION SITE
	STRUCTURE
	PARKING SPACE (PC)
	L/L SPACE (LGV)
	L/L SPACE (MGV)
	INGRESS / EGRESS
	MEDIUM GOODS VEHICLE
	SWEPT PATH OF VEHICLE

PLANNING CONSULTANT  
  
 PROJECT  
 PROPOSED TEMPORARY PLACE OF RECREATION, SPORTS OR CULTURE (HORSE RIDING CENTRE AND BARBECUE SITE) AND HOLIDAY CAMP WITH ANCILLARY FACILITIES FOR A PERIOD OF 3 YEARS AND ASSOCIATED FILLING OF LAND

SITE LOCATION  
 VARIOUS LOTS IN D.D. 76 AND ADJOINING GOVERNMENT LAND, HOK TAU, FANLING, NEW TERRITORIES

SCALE  
1: 1000 @ A4

DRAWN BY MN	DATE 31.7.2024
CHECKED BY	DATE
APPROVED BY	DATE
DWG. TITLE SWEPT PATH ANALYSIS (MGV)	
DWG NO. PLAN 7	VER. 001