

Your Ref.: A/NE-KLH/643

Our Ref.: P24052/TL24446

22 August 2024

The Secretary
Town Planning Board
15/F., North Point Government Offices
333 Java Road, North Point, Hong Kong

By Post and E-mail
tpbpd@pland.gov.hk

Dear Sir,

Submission of Further Information (FI)

‘Proposed Temporary Shop and Services (Retail Shop for Hardware Groceries and Construction Materials) with Ancillary Facilities’ for a period of 5 years in “Village Type Development” zone, Lot No. 610 RP (Part) in D.D. 7, New Territories
(S.16 Application No. A/NE-KLH/643)

We would like to rectify the layout for the captioned application. The location of the vehicular ingress/egress, parking spaces and structure No. 3 has been revised. The applicant has obtained consent from the neighbouring lot to provide access to the application site.

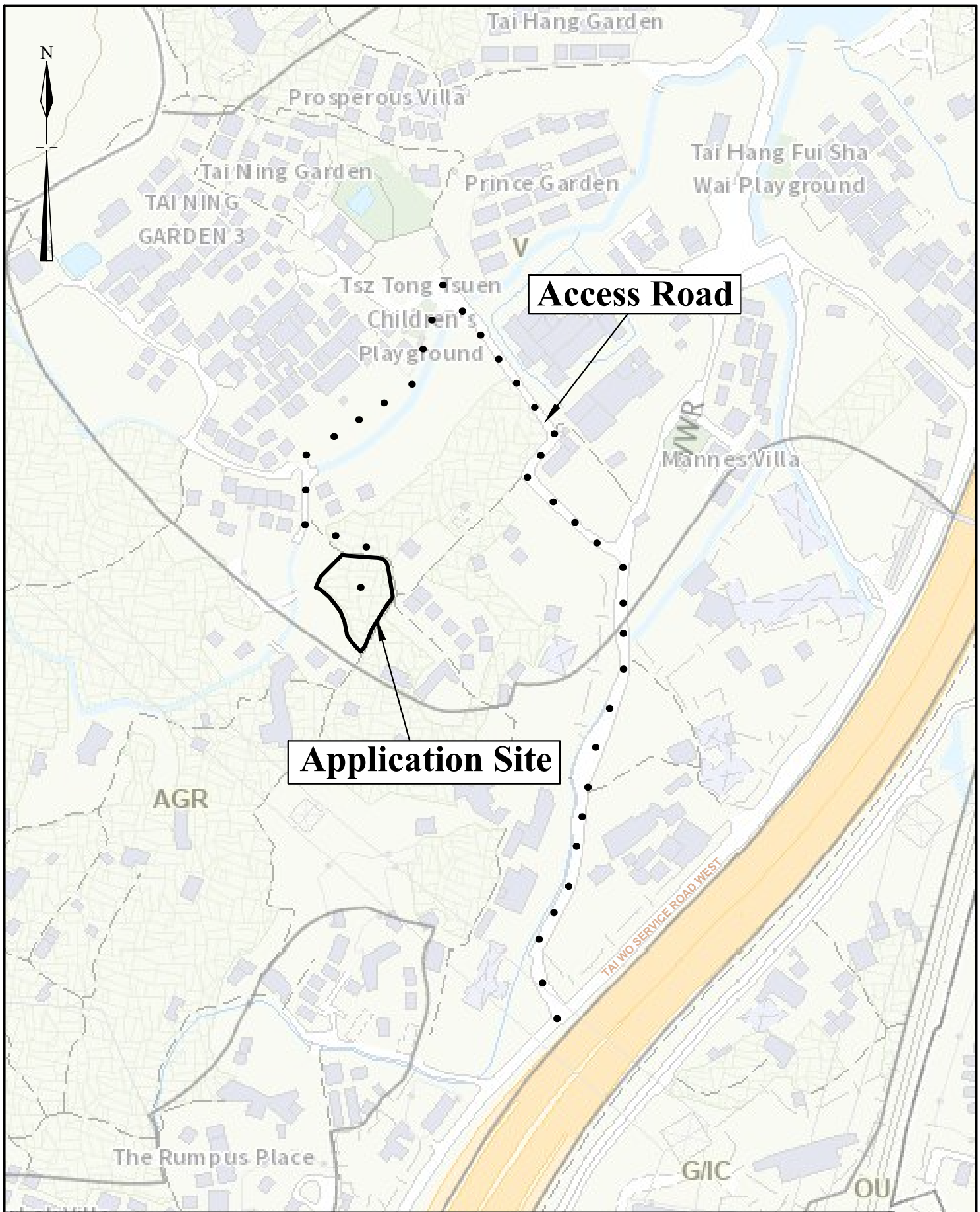
In view of the amendments made in the FI, we enclosed the following revised pages for your perusal:

1. Location Plan (**Plan 1**);
2. Layout Plan (**Plan 3**);
3. Swept Path Analysis (**Plan 4**); and
4. Plan Showing Nearest Public Transport Services (**Plan 5**).

Yours faithfully,
For and on behalf of
Goldrich Planners & Surveyors Ltd.

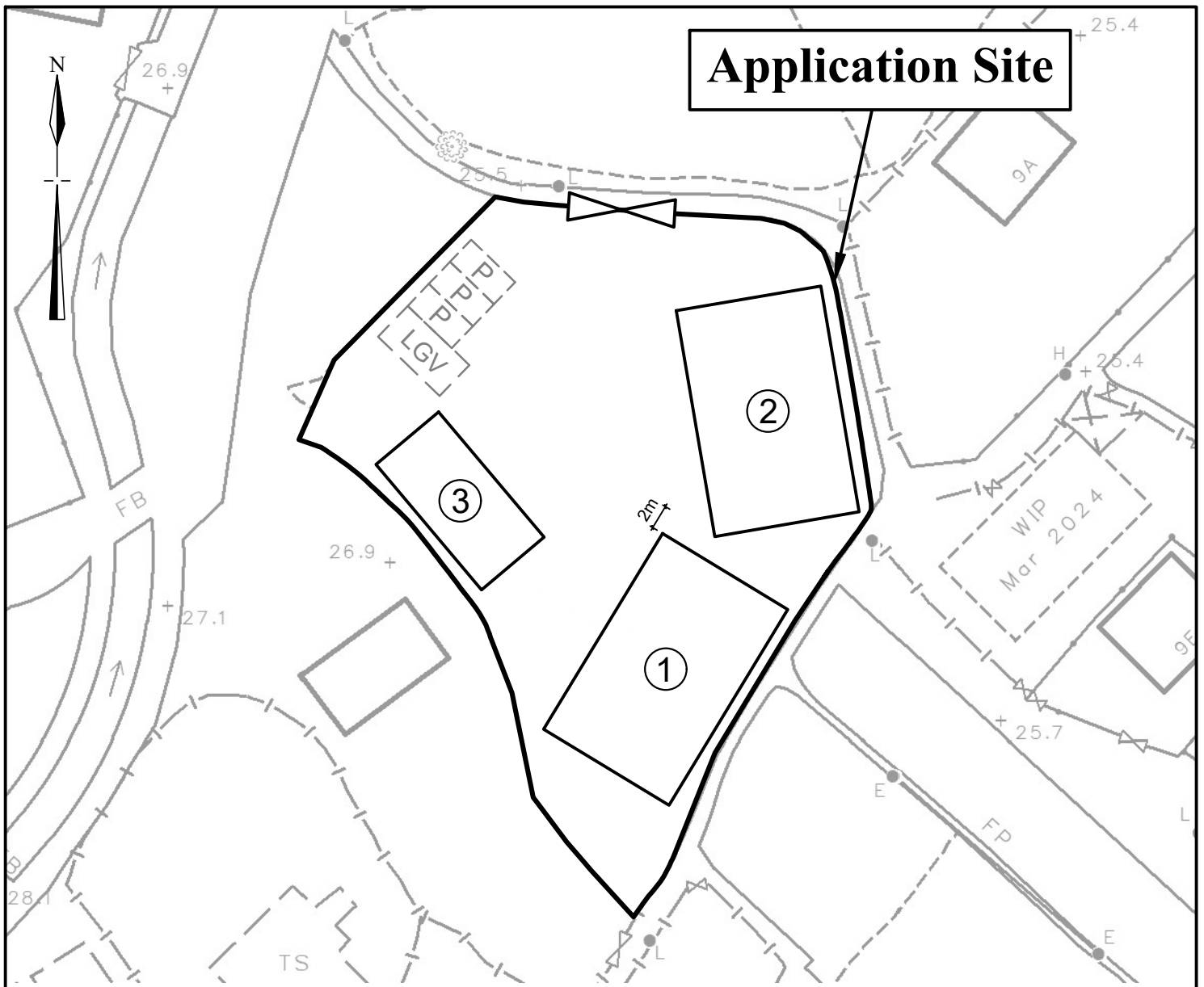

Francis LAU

Encl.

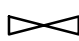




Extract from Approved Kau Lung Hang Outline Zoning Plan No. S/NE-KLH/11

<p>1:1000</p>	<p>Location Plan</p>	<p>Goldrich Planners & Surveyors Ltd.</p>
<p>July 2024</p>	<p>Lot 610 RP(Part) in DD.7 Tai Po, New Territories</p>	<p>Plan 1 (P 24052)</p>



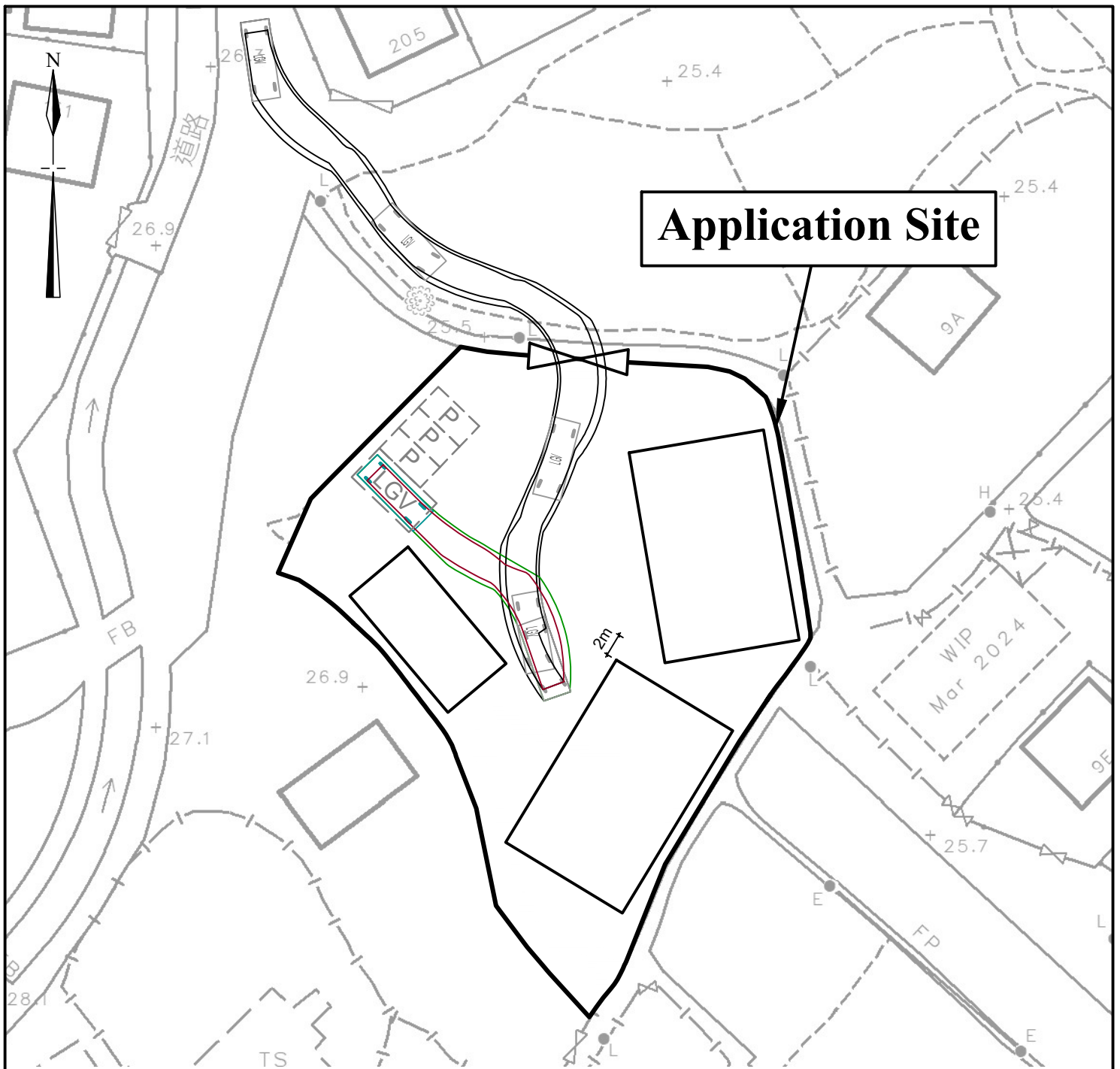
Legend

-  Vehicular Ingress / Egress
-  Parking space for light goods vehicle (7m (L) x 3.5m (W))
-  Parking space for private cars (5m (L) x 2.5m (W))

Site Area(about) : 1,582m²

No.	Structure / Use	Covered Area	Floor Area	Height	Storeys
1	Shop (Hardware Groceries and Construction Materials)	225m ²	225m ²	6m	1
2	Shop (Hardware Groceries and Construction Materials)	225m ²	225m ²	6m	1
3	Ancillary Storage	90m ²	90m ²	6m	1
Total:		<u>540m²</u>	<u>540m²</u>		

1:500	Layout Plan	Goldrich Planners & Surveyors Ltd.
August 2024	Lot 610 RP(Part) in DD.7 Tai Po, New Territories	Plan 3 (P 24052)



Legend



Vehicular Ingress / Egress



**Parking space for light goods vehicle
(7m (L) x 3.5m (W))**



**Parking space for private cars
(5m (L) x 2.5m (W))**



**Light goods vehicle
(7m (L) x 2.5m (W))**

1:500

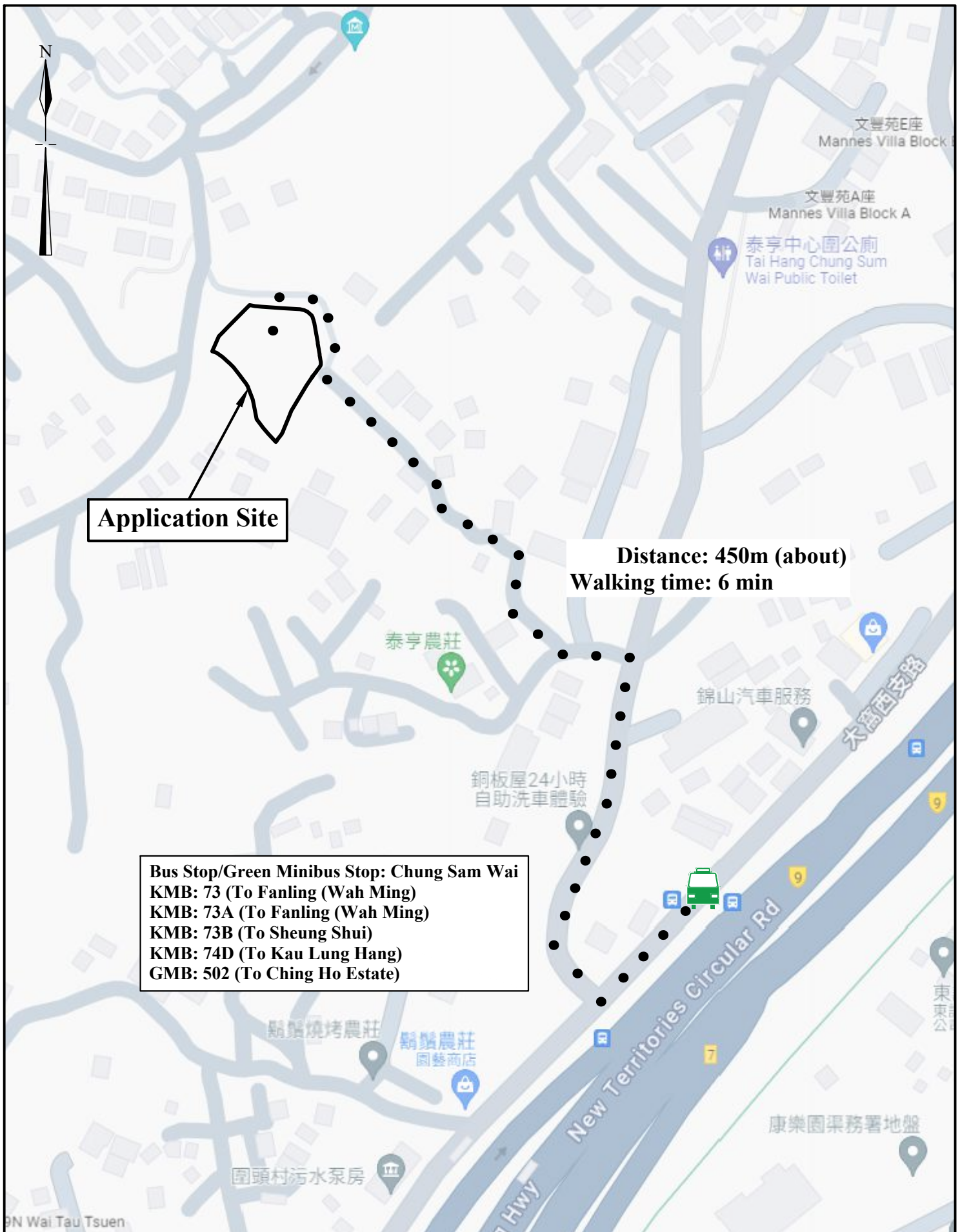
Swept Path Analysis

**Goldrich Planners &
Surveyors Ltd.**

August 2024

**Lot 610 RP(Part) in DD.7
Tai Po, New Territories**

**Plan 4
(P 24052)**



N.T.S	Plan Showing Nearest Public Transport Services	Goldrich Planners & Surveyors Ltd.
August 2024	Lot 610 RP(Part) in DD.7 Tai Po, New Territories	Plan 5 (P 24052)