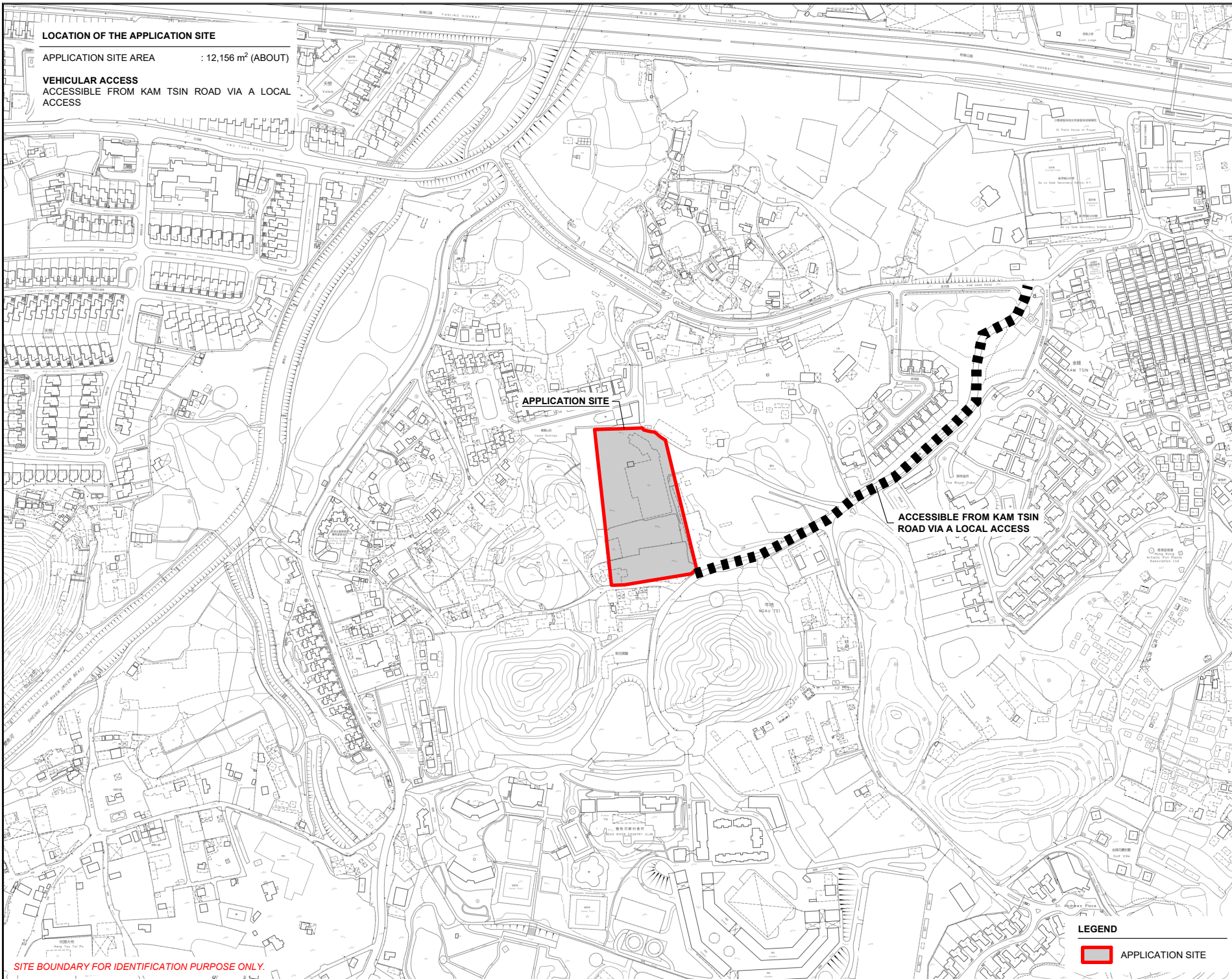
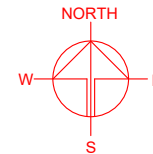


LOCATION OF THE APPLICATION SITE

APPLICATION SITE AREA : 12,156 m² (ABOUT)

VEHICULAR ACCESS
ACCESSIBLE FROM KAM TSIN ROAD VIA A LOCAL ACCESS



APPLICATION SITE

ACCESSIBLE FROM KAM TSIN ROAD VIA A LOCAL ACCESS

SITE BOUNDARY FOR IDENTIFICATION PURPOSE ONLY.

LEGEND

 APPLICATION SITE

PLANNING CONSULTANT



PROJECT

PROPOSED WAREHOUSE (EXCLUDING DANGEROUS GOODS GODOWN) WITH ANCILLARY FACILITIES FOR A PERIOD OF 3 YEARS

SITE LOCATION

LOTS 2219 (PART) AND 2220 (PART) IN D.D. 92, KWU TUNG SOUTH, SHEUNG SHUI, NEW TERRITORIES

SCALE
1 : 5000 @ A4

DRAWN BY	DATE
MN	6.1.2025
CHECKED BY	DATE

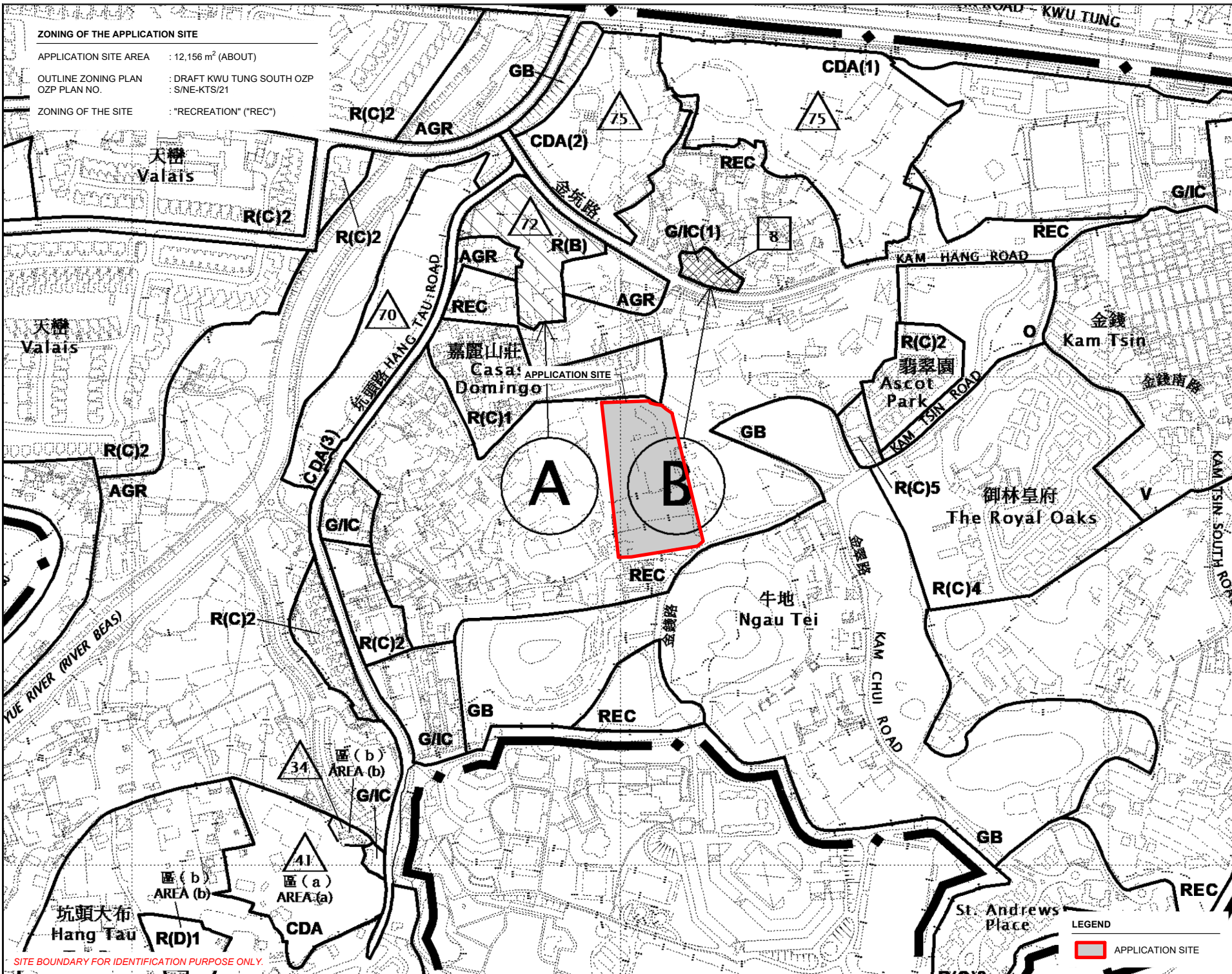
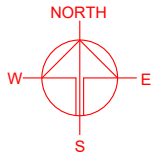
APPROVED BY	DATE
-------------	------

DWG. TITLE
LOCATION PLAN

DWG NO.	VER.
PLAN 1	001

ZONING OF THE APPLICATION SITE

APPLICATION SITE AREA : 12,156 m² (ABOUT)
 OUTLINE ZONING PLAN : DRAFT KWU TUNG SOUTH OZP
 OZP PLAN NO. : S/NE-KTS/21
 ZONING OF THE SITE : "RECREATION" ("REC")



SITE BOUNDARY FOR IDENTIFICATION PURPOSE ONLY.

LEGEND
 APPLICATION SITE

PLANNING CONSULTANT
 R-Riches
 Property Consultants Ltd.

PROJECT
 PROPOSED WAREHOUSE (EXCLUDING DANGEROUS GOODS GODOWN) WITH ANCILLARY FACILITIES FOR A PERIOD OF 3 YEARS

SITE LOCATION
 LOTS 2219 (PART) AND 2220 (PART) IN D.D. 92, KWU TUNG SOUTH, SHEUNG SHUI, NEW TERRITORIES

SCALE 1 : 5000 @ A4	
DRAWN BY MN	DATE 6.1.2025
CHECKED BY	DATE
APPROVED BY	DATE
DWG. TITLE ZONING OF THE SITE	
DWG. NO. PLAN 2	VER. 001

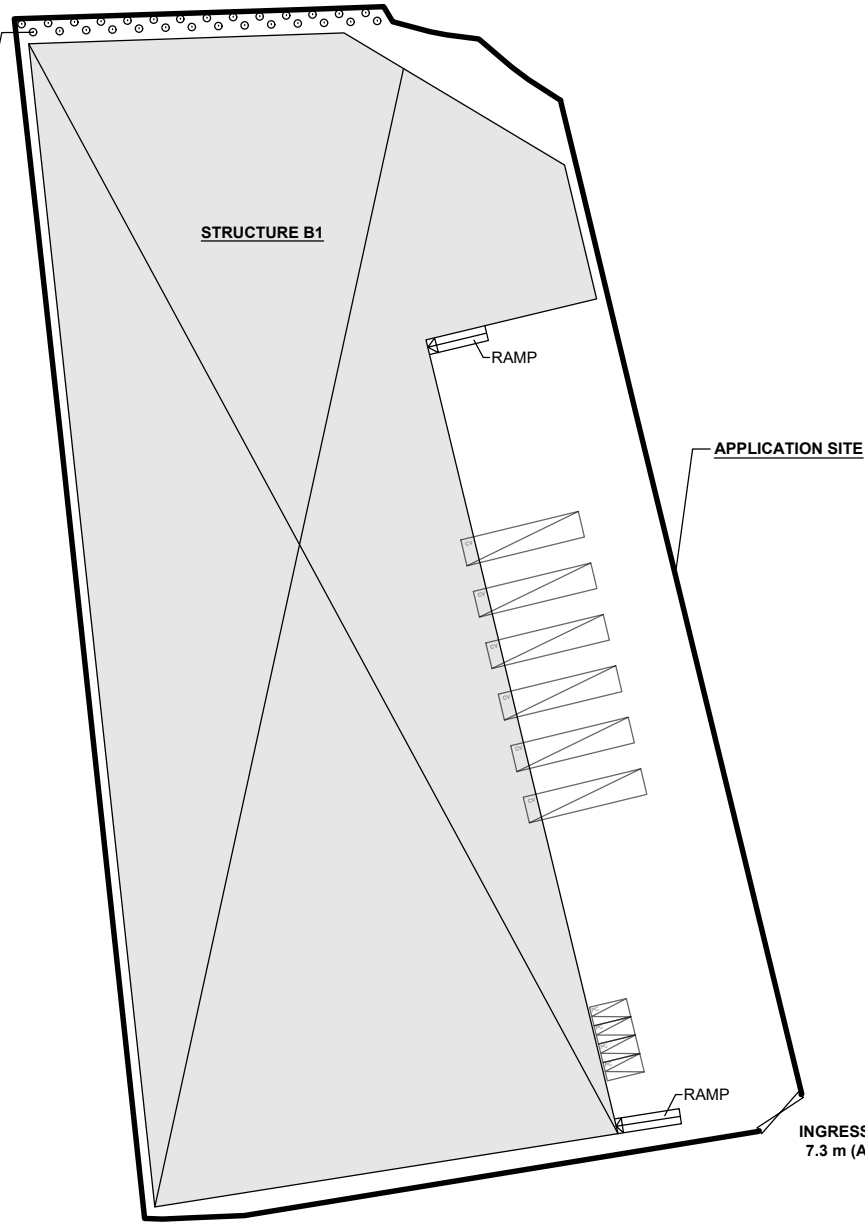
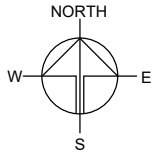
DEVELOPMENT PARAMETERS

APPLICATION SITE AREA	: 12,156 m ²	(ABOUT)
COVERED AREA	: 8,614 m ²	(ABOUT)
UNCOVERED AREA	: 3,542 m ²	(ABOUT)
PLOT RATIO	: 1.4	(ABOUT)
SITE COVERAGE	: 71 %	(ABOUT)
NO. OF STRUCTURE	: 1	
DOMESTIC GFA	: N/A	
NON-DOMESTIC GFA	: 17,228 m ²	(ABOUT)
TOTAL GFA	: 17,228 m ²	(ABOUT)
BUILDING HEIGHT	: 15 m	(ABOUT)
NO. OF STOREY	: 2	

NO. OF PROPOSED TREE: 28
 TO PROVIDE LANDSCAPE SCREENING FROM THE NEARBY RESIDENTIAL DEVELOPMENT

STRUCTURE	USE	COVERED AREA	GROSS FLOOR AREA	BUILDING HEIGHT
B1	WAREHOUSE (EXCLUDING D.G.G.), SITE OFFICE, WASHROOM	8,614 m ² (ABOUT)	17,228 m ² (ABOUT)	15 m (ABOUT)(2-STOREY)
TOTAL		8,614 m² (ABOUT)	17,228 m² (ABOUT)	

**D.D.G. - DANGEROUS GOODS GODOWN*



PARKING AND LOADING / UNLOADING PROVISIONS

NO. OF PRIVATE CAR PARKING SPACE	: 4
DIMENSION OF PARKING SPACE	: 5 m (L) x 2.5 m (W)
NO. OF L/UL SPACE FOR CONTAINER VEHICLE	: 6
DIMENSION OF L/UL SPACE	: 16 m (L) x 3.5 m (W)

INGRESS / EGRESS
 7.3 m (ABOUT)(W)

LEGEND

- APPLICATION SITE
- STRUCTURE
- PARKING SPACE (PRIVATE CAR)
- L/UL SPACE (CONTAINER VEHICLE)
- INGRESS / EGRESS

PLANNING CONSULTANT



PROJECT

PROPOSED WAREHOUSE (EXCLUDING DANGEROUS GOODS GODOWN) WITH ANCILLARY FACILITIES FOR A PERIOD OF 3 YEARS

SITE LOCATION

LOTS 2219 (PART) AND 2220 (PART) IN D.D. 92, KWU TUNG SOUTH, SHEUNG SHUI, NEW TERRITORIES

SCALE

1 : 1000 @ A4

DRAWN BY: MN DATE: 17.1.2025

CHECKED BY: DATE:

APPROVED BY: DATE:

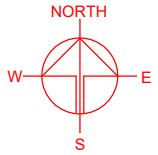
DWG. TITLE
 LAYOUT PLAN

DWG NO.: PLAN 4 VER.: 001

SWEPT PATH ANALYSIS

TYPE OF VEHICLE : CONTAINER VEHICLE
 DIMENSION OF VEHICLE : 2.5 m (W) X 16 m (L)

SWEPT PATHS GENERATED BY AUTODESK VEHICLE TRACKING.



SITE BOUNDARY FOR IDENTIFICATION PURPOSE ONLY.

LEGEND

- APPLICATION SITE
- STRUCTURE
- PARKING SPACE (PRIVATE CAR)
- L/U/L SPACE (CONTAINER VEHICLE)
- INGRESS / EGRESS
- CONTAINER VEHICLE
- SWEEP PATH OF VEHICLE

PLANNING CONSULTANT



PROJECT

PROPOSED WAREHOUSE (EXCLUDING DANGEROUS GOODS FODOWN) WITH ANCILLARY FACILITIES FOR A PERIOD OF 3 YEARS

SITE LOCATION

LOTS 2219 (PART) AND 2220 (PART) IN D.D. 92, KWU TUNG SOUTH, SHEUNG SHUI, NEW TERRITORIES

SCALE

1 : 2500 @ A4

DRAWN BY

MN

DATE

6.1.2025

CHECKED BY

DATE

APPROVED BY

DATE

DWG. TITLE

SWEPT PATH ANALYSIS

DWG NO.

PLAN 5

VER.

001