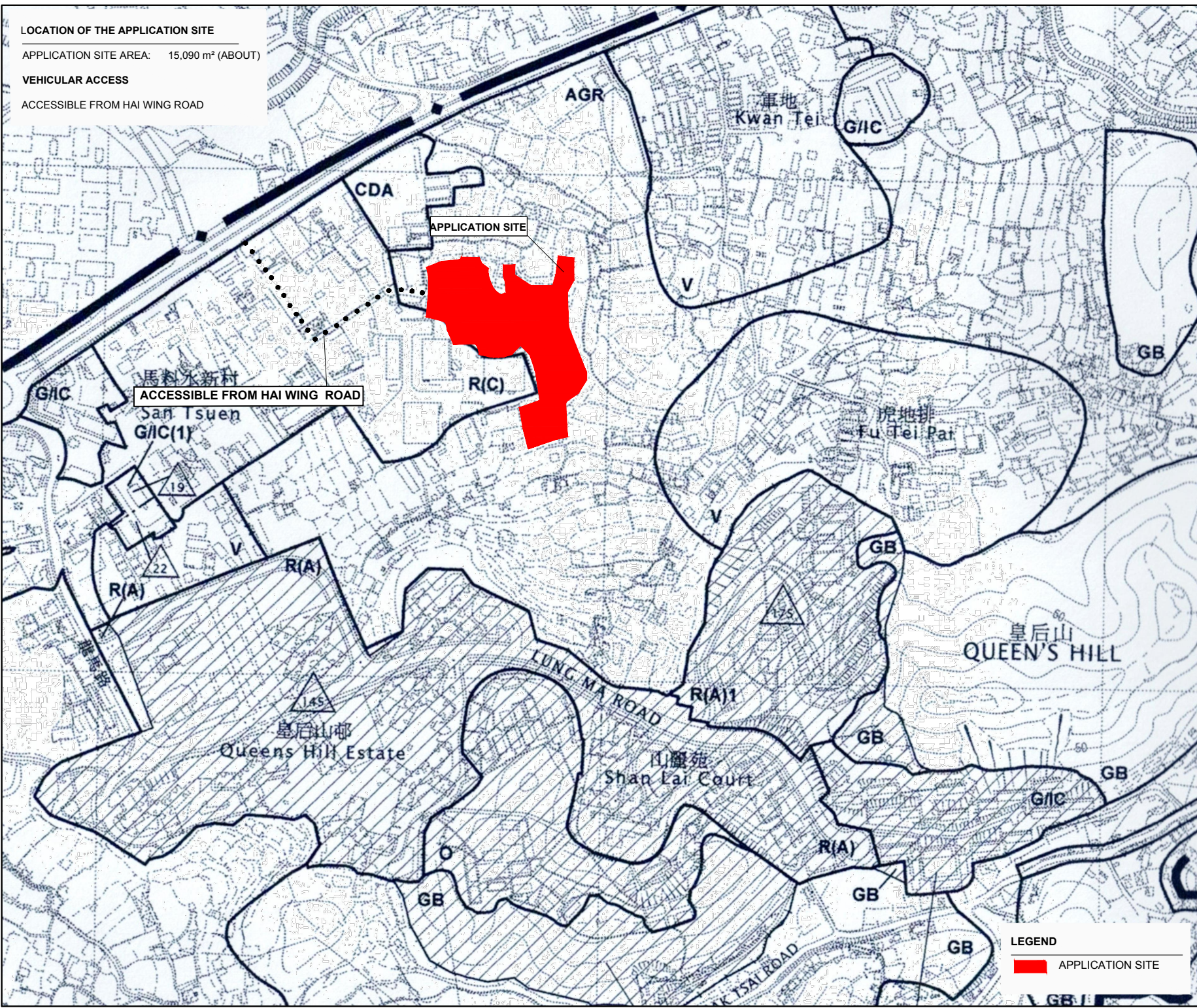


LOCATION OF THE APPLICATION SITE

APPLICATION SITE AREA: 15,090 m² (ABOUT)

VEHICULAR ACCESS

ACCESSIBLE FROM HAI WING ROAD



PROJECT
**PROPOSED TEMPORARY
 OPEN STORAGE OF
 CONSTRUCTION MATERIALS
 AND MACHINERIES WITH
 ANCILLARY FACILITIES FOR A
 PERIOD OF 3 YEARS AND
 ASSOCIATED FILLING OF LAND**

SITE LOCATION
 LOTS 731 (PART), 745 RP (PART), 749 (PART), 750 (PART), 751 S.A (PART), 751 RP (PART), 752 (PART), 753 S.A, 753 RP (PART), 754 (PART), 757 (PART), 758 (PART), 759 (PART), 761 (PART), 777 (PART) AND 778 (PART) IN D.D. 83, AND ADJOINING GOVERNMENT LAND, LUNG YEUK TAU, NEW TERRITORIES

SCALE
 1 : 5000 @ A4

DRAWING TITLE
 LOCATION AND ACCESS PLAN

DRAWN BY	DATE
J.W	04.11.2024

REVISED BY	DATE

APPROVED BY	DATE

DWG NO.	VER.
PLAN 3	A-1

LEGEND
 APPLICATION SITE