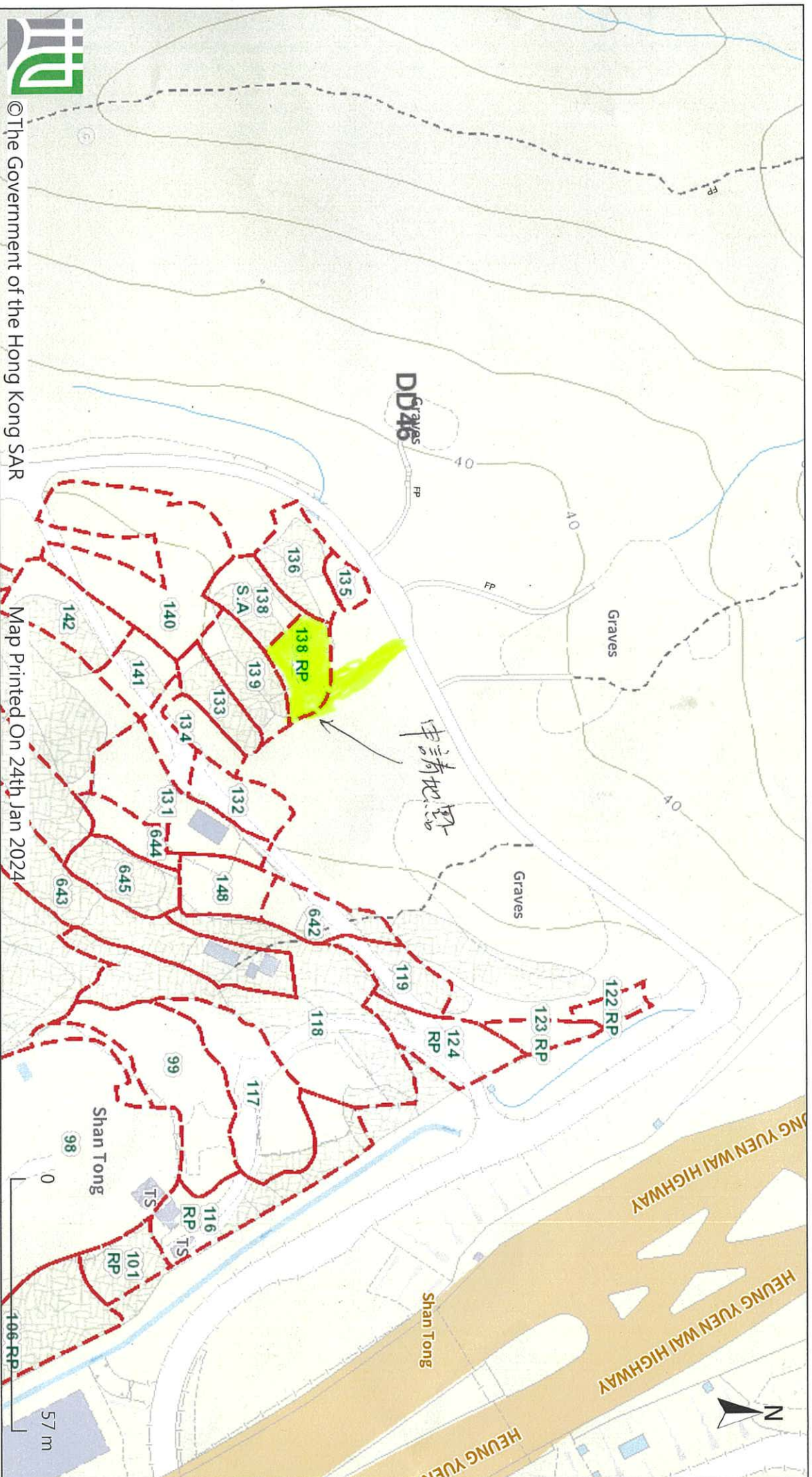


LOCATION PLAN

Go to map: <https://www.map.gov.hk/gm/geo:22.5237,114.1757?z=1128>



©The Government of the Hong Kong SAR

Map Printed On 24th Jan 2024

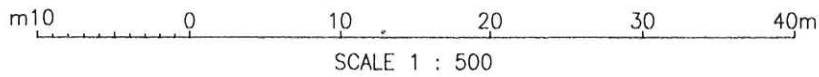
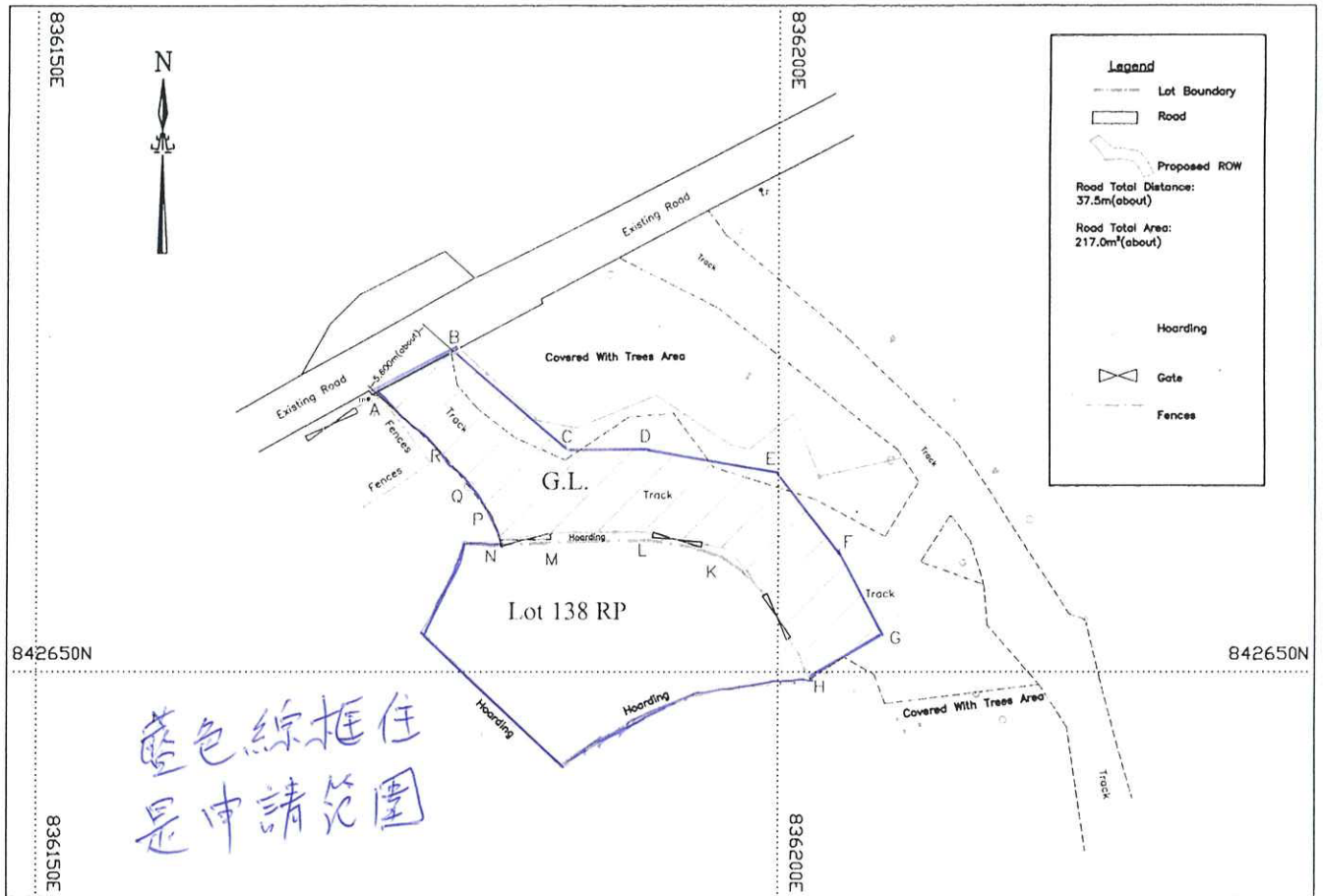
57 m

100 RP

Powered by GeoInfo Map: <https://www.map.gov.hk>

Note: The use of this map is subject to the Terms and Conditions and the IP Rights Notice of GeoInfo Map.

Plan of Lot No.138 RP in DD.46 and Government Land

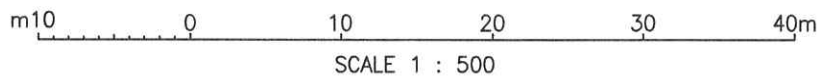


PROPOSED ROW DIMENSIONS & COORDINATES:

SIDE	BEARING ° ' "	DISTANCE	POINT	N	E	AREA
A-B	62 06 30	5.982	A	842668.833	836172.805	217.0m ² (About)
B-C	131 31 43	10.014	B	842671.631	836178.092	
C-D	89 25 45	5.573	C	842664.992	836185.589	
D-E	100 46 51	8.809	D	842665.047	836191.162	
E-F	141 46 57	6.488	E	842663.399	836199.815	
F-G	151 48 02	6.715	F	842658.302	836203.829	
G-H	241 56 34	5.600	G	842652.384	836207.003	
H-J	331 48 02	6.210	H	842649.750	836202.061	
J-K	321 46 57	3.904	J	842655.223	836199.126	
K-L	280 46 51	6.159	K	842658.290	836196.711	
L-M	269 25 45	5.922	L	842659.442	836190.661	
M-N	262 14 32	3.526	M	842659.383	836184.739	
N-P	341 56 56	1.746	N	842658.907	836181.245	
P-Q	321 50 20	2.530	P	842660.567	836180.704	
Q-R	321 04 31	3.007	Q	842662.556	836179.141	
R-A	311 31 43	5.940	R	842664.895	836177.252	

Date: 11/01/2024

Plan of Lot No.138 RP in DD.46

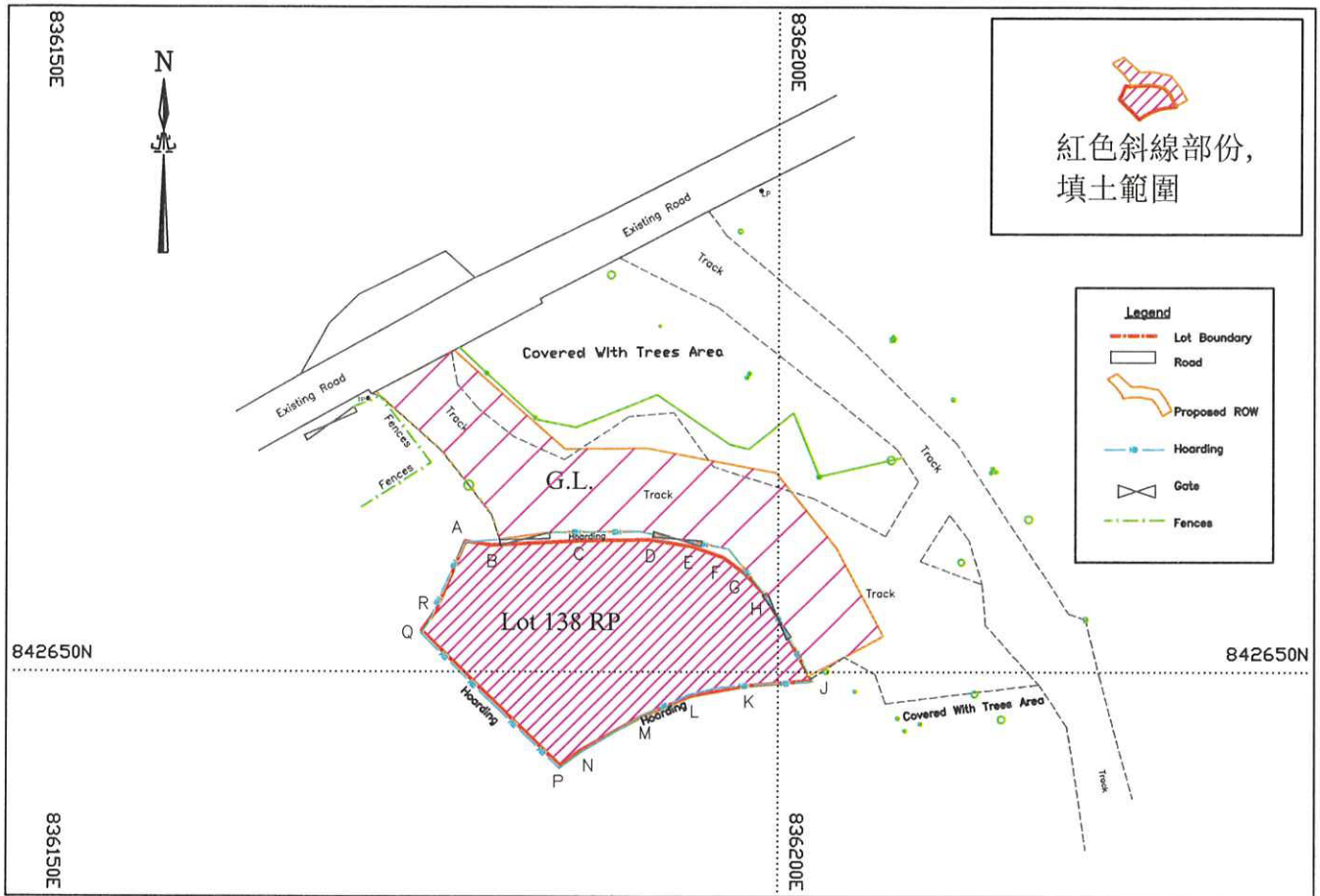


	<p>動物飼養所, 擬建上蓋範圍 Area: 214. 1m² (about)</p>
<p>擬建上蓋部份高度4.5米</p>	
	<p>Open Space Area: 36. 0m² (about)</p>

Legend	
	Lot Boundary
	Road
	Proposed ROW
	Hoarding
	Gate
	Fences

Date: 11/01/2024

Plan of Lot No.138 RP in DD.46



m 10 0 10 20 30 40m

SCALE 1 : 500

LOT DIMENSIONS & COORDINATES:

SIDE	BEARING ° ' "	DISTANCE	POINT	N	E	AREA
A-B	97 58 20	1.824	A	842658.772	836178.894	250.2m ² (About)
B-C	87 07 46	6.413	B	842658.519	836180.700	
C-D	89 36 39	4.299	C	842658.840	836187.105	
D-E	98 57 28	2.813	D	842658.869	836191.404	
E-F	108 52 30	2.256	E	842658.431	836194.183	
F-G	126 27 19	1.818	F	842657.702	836196.318	
G-H	136 50 24	1.881	G	842656.621	836197.780	
H-J	151 56 42	6.629	H	842655.249	836199.067	
J-K	265 18 33	4.226	J	842649.399	836202.185	
K-L	259 34 47	3.852	K	842649.054	836197.973	
L-M	247 24 52	3.887	L	842648.357	836194.184	
M-N	240 45 22	4.565	M	842646.864	836190.595	
N-P	232 32 14	1.626	N	842644.634	836186.611	
P-Q	314 04 28	13.075	P	842643.645	836185.320	
Q-R	36 01 58	1.715	Q	842652.740	836175.927	
R-A	22 51 23	5.041	R	842654.127	836176.936	