



SECTION	AREA
LOT 1642 S.A	135.3 m <sup>2</sup> (About)
LOT 1642 S.B	151.0 m <sup>2</sup> (About)
LOT 1642 S.C	102.2 m <sup>2</sup> (About)
LOT 1642 S.D	122.3 m <sup>2</sup> (About)
LOT 1642 S.E	127.7 m <sup>2</sup> (About)
LOT 1642 S.F	177.8 m <sup>2</sup> (About)
LOT 1642 S.G	141.9 m <sup>2</sup> (About)
LOT 1642 S.H	19.4 m <sup>2</sup> (About)
LOT 1642 RP	2.7 m <sup>2</sup> (About)
<b>Total Area</b>	<b>1038.3 m<sup>2</sup> (About)</b>

**Notes:**

SUBJECT LOT CO-ORDINATES & DIMENSIONS:  
 Bearing Distance  
 Boundary Point  
 LOT 1642 S.A IN D.D.91

J	61	40	65	8.104	899274.407	831280E
K	54	20	30	3.124	899260.111	831280E
L	171	16	33	2.156	899271.960	831280E
M	168	40	07	4.702	899272.491	831280E
N	237	52	52	5.489	899255.079	831280E
O	230	52	30	5.250	899251.676	831280E
P	330	44	38	14.593	899274.607	831280E

SUBJECT LOT CO-ORDINATES & DIMENSIONS:  
 Bearing Distance  
 Boundary Point  
 LOT 1642 S.B IN D.D.91

G	61	57	52	8.723	899270.745	831280E
H	159	44	38	14.893	899261.876	831280E
I	237	52	52	5.489	899255.079	831280E
J	230	52	30	5.250	899251.676	831280E
K	330	44	38	15.618	899270.745	831280E

SUBJECT LOT CO-ORDINATES & DIMENSIONS:  
 Bearing Distance  
 Boundary Point  
 LOT 1642 S.C IN D.D.91

F	76	04	30	4.197	899267.543	831280E
G	67	57	52	8.723	899270.745	831280E
H	159	44	38	14.893	899261.876	831280E
I	237	52	52	5.489	899255.079	831280E
J	230	52	30	5.250	899251.676	831280E
K	330	44	38	16.680	899267.543	831280E

SUBJECT LOT CO-ORDINATES & DIMENSIONS:  
 Bearing Distance  
 Boundary Point  
 LOT 1642 S.D IN D.D.91

A	60	44	30	8.490	899268.776	831280E
B	150	44	30	16.096	899251.096	831280E
C	240	44	30	8.764	899246.813	831280E
D	240	02	43	6.100	899245.468	831280E
E	260	33	19	3.091	899245.462	831280E
F	284	23	30	2.095	899246.907	831280E
G	284	23	30	2.095	899246.907	831280E
H	230	59	04	2.721	899245.515	831280E

SUBJECT LOT CO-ORDINATES & DIMENSIONS:  
 Bearing Distance  
 Boundary Point  
 LOT 1642 S.E IN D.D.91

M	48	01	41	8.578	899249.515	831280E
N	11.818	899249.515	831280E			
O	11.818	899249.515	831280E			
P	65	29	54	11.818	899249.515	831280E
Q	240	44	30	8.764	899246.813	831280E
R	240	02	43	6.100	899245.468	831280E
S	260	33	19	3.091	899245.462	831280E
T	284	23	30	2.095	899246.907	831280E
U	284	23	30	2.095	899246.907	831280E
V	230	59	04	2.721	899245.515	831280E
W	230	59	04	2.721	899245.515	831280E
X	330	44	38	16.618	899249.515	831280E

SUBJECT LOT CO-ORDINATES & DIMENSIONS:  
 Bearing Distance  
 Boundary Point  
 LOT 1642 S.F IN D.D.91

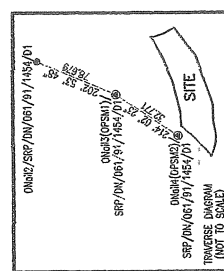
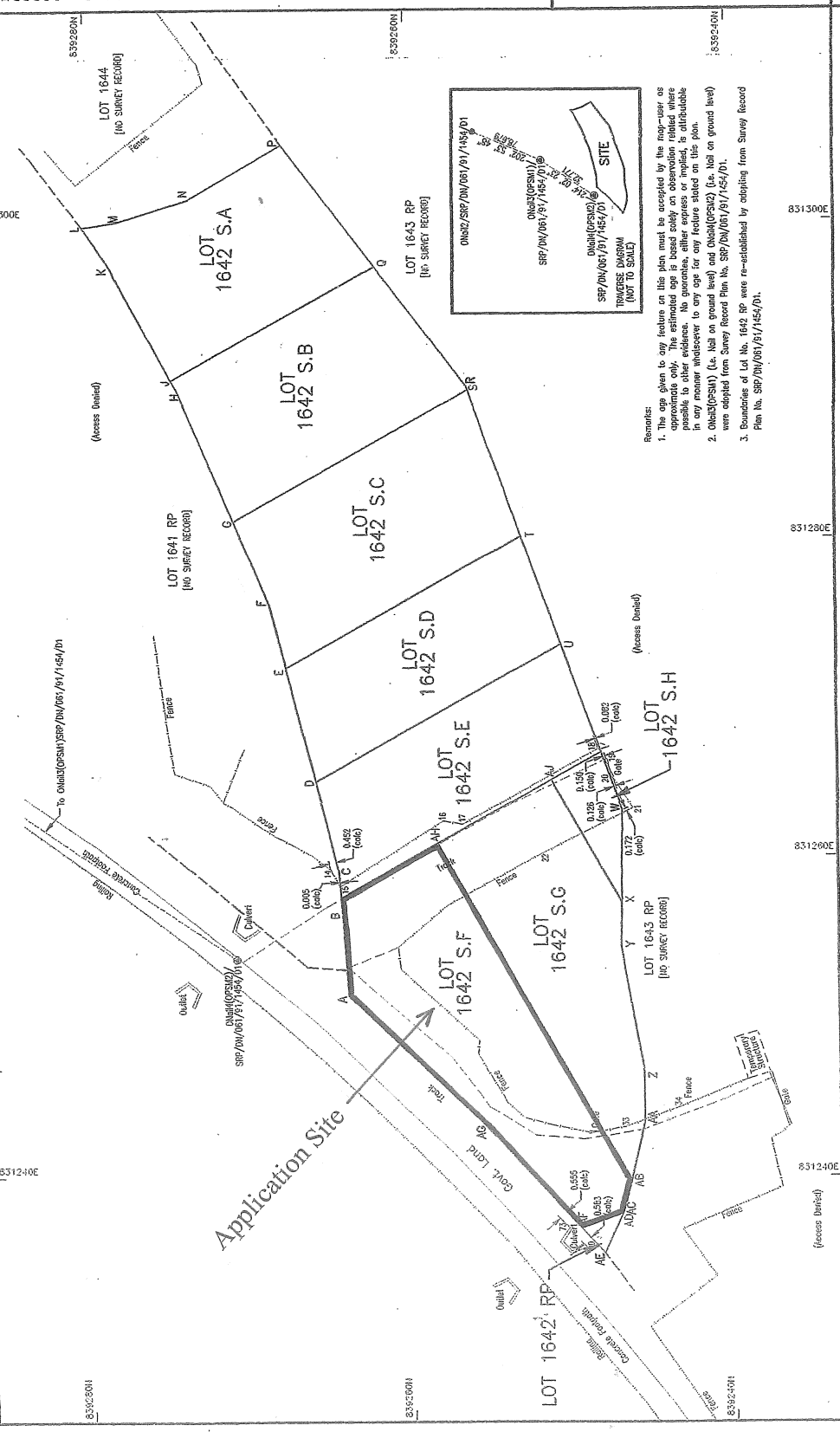
A	60	44	30	8.490	899268.776	831280E
B	150	44	30	16.096	899251.096	831280E
C	240	44	30	8.764	899246.813	831280E
D	240	02	43	6.100	899245.468	831280E
E	260	33	19	3.091	899245.462	831280E
F	284	23	30	2.095	899246.907	831280E
G	284	23	30	2.095	899246.907	831280E
H	230	59	04	2.721	899245.515	831280E

SUBJECT LOT CO-ORDINATES & DIMENSIONS:  
 Bearing Distance  
 Boundary Point  
 LOT 1642 S.G IN D.D.91

X	60	44	30	8.490	899268.776	831280E
Y	150	44	30	16.096	899251.096	831280E
Z	240	44	30	8.764	899246.813	831280E
AA	240	02	43	6.100	899245.468	831280E
AB	260	33	19	3.091	899245.462	831280E
AC	284	23	30	2.095	899246.907	831280E
AD	284	23	30	2.095	899246.907	831280E
AE	230	59	04	2.721	899245.515	831280E
AF	230	59	04	2.721	899245.515	831280E
AG	330	44	38	16.468	899249.515	831280E

SUBJECT LOT CO-ORDINATES & DIMENSIONS:  
 Bearing Distance  
 Boundary Point  
 LOT 1642 S.H IN D.D.91

X	60	44	30	8.490	899268.776	831280E
Y	150	44	30	16.096	899251.096	831280E
Z	240	44	30	8.764	899246.813	831280E
AA	240	02	43	6.100	899245.468	831280E
AB	260	33	19	3.091	899245.462	831280E
AC	284	23	30	2.095	899246.907	831280E
AD	284	23	30	2.095	899246.907	831280E
AE	230	59	04	2.721	899245.515	831280E
AF	230	59	04	2.721	899245.515	831280E
AG	330	44	38	16.468	899249.515	831280E



Remarks:  
 1. This site plan is for reference only. The site must be accessed by the proponent as shown on the plan. The estimated area is based solely on observation related where possible to other evidence. No guarantee, either express or implied, is attributable in any manner whatsoever to any error for any feature stated on this plan.  
 2. Overall (OSM) (i.e. total on ground level) and Overall (OSM) (i.e. total on ground level) were obtained from Survey Record Plan No. SRP/DN/061/91/1454/D1.  
 3. Boundaries of Lot No. 1642 RP were re-established by adopting from Survey Record Plan No. SRP/DN/061/91/1454/D1.

SUBJECT LOT CO-ORDINATES & DIMENSIONS:  
 Bearing Distance  
 Boundary Point  
 LOT 1642 S.A IN D.D.91

J	61	40	65	8.104	899274.407	831280E
K	54	20	30	3.124	899260.111	831280E
L	171	16	33	2.156	899271.960	831280E
M	168	40	07	4.702	899272.491	831280E
N	237	52	52	5.489	899255.079	831280E
O	230	52	30	5.250	899251.676	831280E
P	330	44	38	14.593	899274.607	831280E

SUBJECT LOT CO-ORDINATES & DIMENSIONS:  
 Bearing Distance  
 Boundary Point  
 LOT 1642 S.B IN D.D.91

G	61	57	52	8.723	899270.745	831280E
H	159	44	38	14.893	899261.876	831280E
I	237	52	52	5.489	899255.079	831280E
J	230	52	30	5.250	899251.676	831280E
K	330	44	38	15.618	899270.745	831280E

SUBJECT LOT CO-ORDINATES & DIMENSIONS:  
 Bearing Distance  
 Boundary Point  
 LOT 1642 S.C IN D.D.91

F	76	04	30	4.197	899267.543	831280E
G	67	57	52	8.723	899270.745	831280E
H	159	44	38	14.893	899261.876	831280E
I	237	52	52	5.489	899255.079	831280E
J	230	52	30	5.250	899251.676	831280E
K	330	44	38	16.680	899267.543	831280E

SUBJECT LOT CO-ORDINATES & DIMENSIONS:  
 Bearing Distance  
 Boundary Point  
 LOT 1642 S.D IN D.D.91

A	60	44	30	8.490	899268.776	831280E
B	150	44	30	16.096	899251.096	831280E
C	240	44	30	8.764	899246.813	831280E
D	240	02	43	6.100	899245.468	831280E
E	260	33	19	3.091	899245.462	831280E
F	284	23	30	2.095	899246.907	831280E
G	284	23	30	2.095	899246.907	831280E
H	230	59	04	2.721	899245.515	831280E

SUBJECT LOT CO-ORDINATES & DIMENSIONS:  
 Bearing Distance  
 Boundary Point  
 LOT 1642 S.E IN D.D.91

M	48	01	41	8.578	899249.515	831280E
N	11.818	899249.515	831280E			
O	11.818	899249.515	831280E			
P	65	29	54	11.818	899249.515	831280E
Q	240	44	30	8.764	899246.813	831280E
R	240	02	43	6.100	899245.468	831280E
S	260	33	19	3.091	899245.462	831280E
T	284	23	30	2.095	899246.907	831280E
U	284	23	30	2.095	899246.907	831280E
V	230	59	04	2.721	899245.515	831280E
W	230	59	04	2.721	899245.515	831280E
X	330	44	38	16.618	899249.515	831280E

SUBJECT LOT CO-ORDINATES & DIMENSIONS:  
 Bearing Distance  
 Boundary Point  
 LOT 1642 S.F IN D.D.91

A	60	44	30	8.490	899268.776	831280E
B	150	44	30	16.096	899251.096	831280E
C	240	44	30	8.764	899246.813	831280E
D	240	02	43	6.100	899245.468	831280E
E	260	33	19	3.091	899245.462	831280E
F	284	23	30	2.095	899246.907	831280E
G	284	23	30	2.095	899246.907	831280E
H	230	59	04	2.721	899245.515	831280E

SUBJECT LOT CO-ORDINATES & DIMENSIONS:  
 Bearing Distance  
 Boundary Point  
 LOT 1642 S.G IN D.D.91

X	60	44	30	8.490	899268.776	831280E
Y	150	44	30	16.096	899251.096	831280E
Z	240	44	30	8.764	899246.813	831280E
AA	240	02	43	6.100	899245.468	831280E
AB	260	33	19	3.091	899245.462	831280E
AC	284	23	30	2.095	899246.907	831280E
AD	284	23	30	2.095	899246.907	831280E
AE	230	59	04	2.721	899245.515	831280E
AF	230	59	04	2.721	899245.515	831280E
AG	330	44	38	16.468	899249.515	831280E

SUBJECT LOT CO-ORDINATES & DIMENSIONS:  
 Bearing Distance  
 Boundary Point  
 LOT 1642 S.H IN D.D.91

X	60	44	30	8.490	899268.776	831280E
Y	150	44	30	16.096	899251.096	831280E
Z	240	44	30	8.764	899246.813	831280E
AA	240	02	43	6.100	899245.468	831280E
AB	260	33	19	3.091	899245.462	831280E
AC	284	23	30	2.095	899246.907	831280E
AD	284	23	30	2.095	899246.907	831280E
AE	230	59	04	2.721	899245.515	831280E
AF	230	59	04	2.721	899245.515	831280E
AG	330	44	38	16.468	899249.515	831280E

FOR OFFICIAL USE

Survey Record Plan No.: SRP/DN/054/0610/D1

PLAN OF  
 LOT Nos. 1642 S.A TO S.H & RP IN D.D.91  
 BEING SUBDIVISION OF LOT No. 1642 RP IN D.D.91

Survey District: NORTH  
 Date of Survey: September 2014  
 Scale: 1:200 Field Bk.: GL1195  
 Survey Sheet No: 3-SW-11B  
 Reference SRP: SRP/DN/061/91/1454/D1

I, HEUNG CHUN YAN, Geomatics, an Authorized Land Surveyer registered under the Land Survey Ordinance (Cap. 473), hereby certify that this survey plan has been prepared from land boundary surveys that were carried out by me, or under my direct supervision in conformity with the Code of Practice approved by the Land Survey Authority under the above Ordinance, and that this plan correctly represents the survey completed on the ... day of ... September, 2014.

Dated this ... day of ... October, 2014.

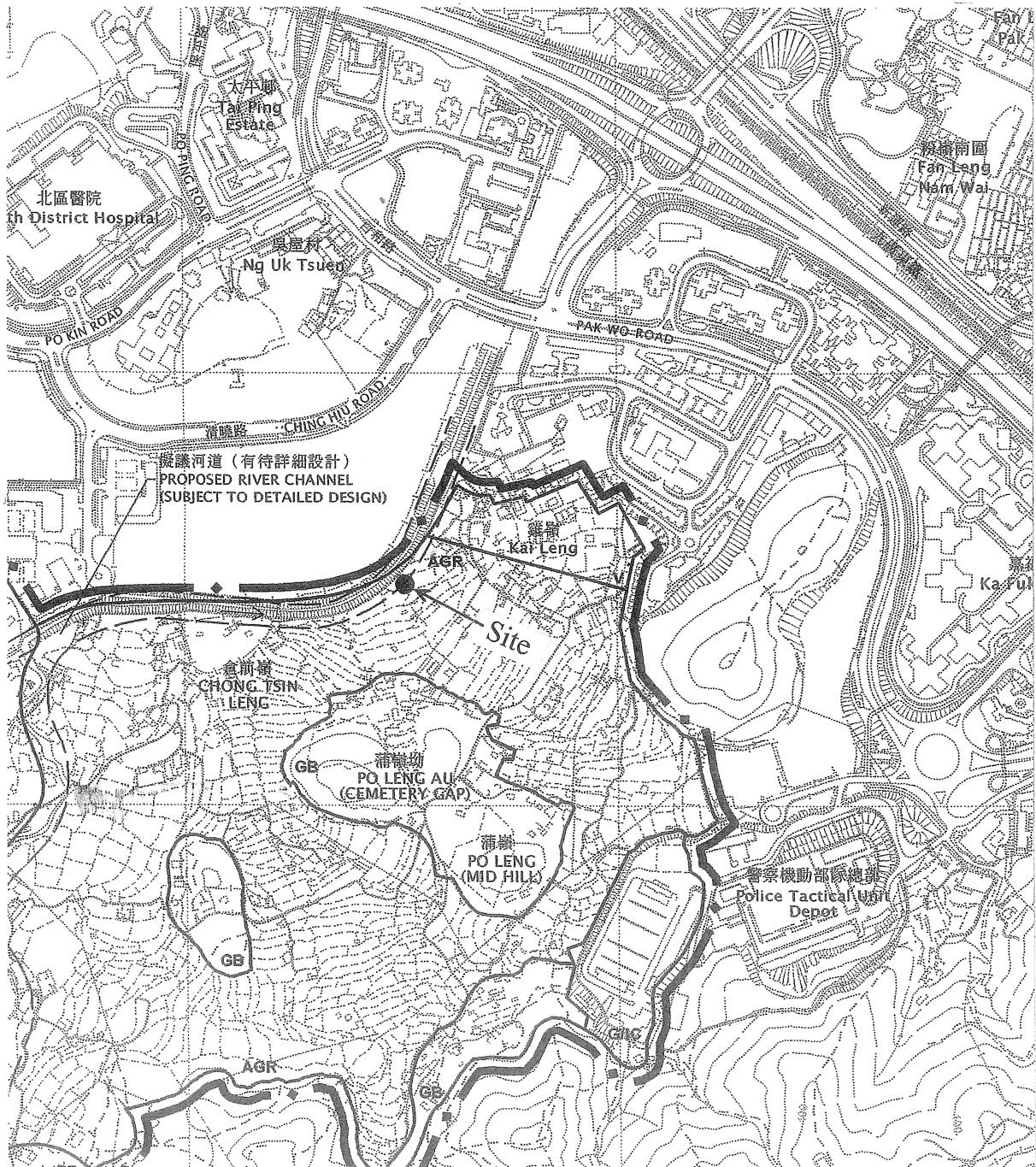
HEUNG CHUN YAN  
 Authorized Land Surveyer

Gland Surveying, Planning & GIS Co. Ltd.  
 新加坡地產測量及地理資訊系統有限公司



# EXTRACT PLAN

## From O.Z.P. S/NE-PK/11



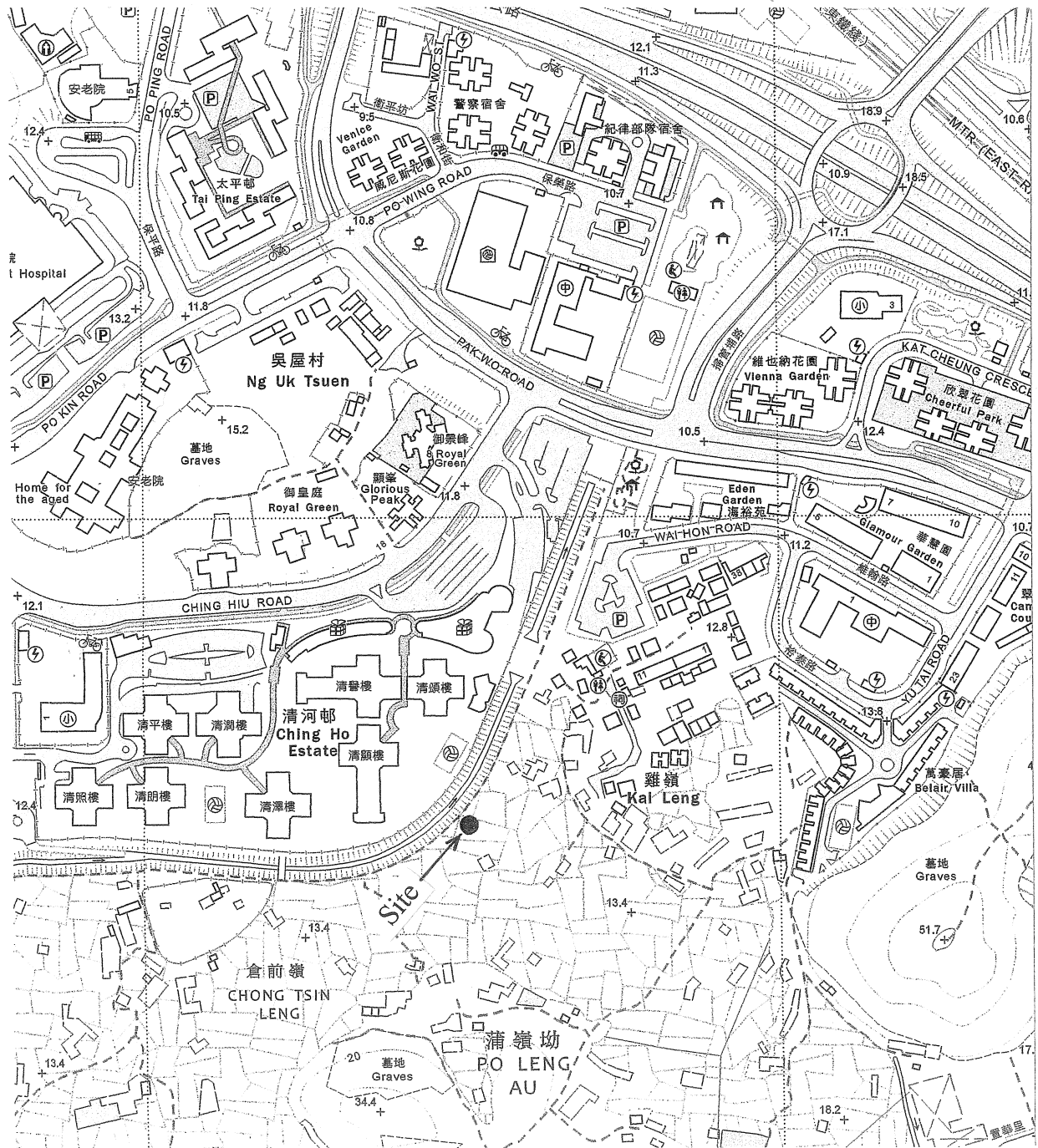
SCALE 1:7500





# LOCATION PLAN

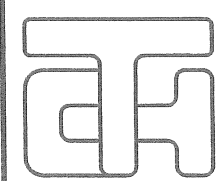
## From Survey Sheet No. 3-SW-A



SCALE 1:5000

# Location Plan of Proposed Septic Tank

Lot No. 1642 S.F in D.D. 91



**T.H. & ASSOCIATES LIMITED**  
**( 陳 德 慶 測 量 有 限 公 司 )**

Approved By

.....  
 T.H.CHAN (ALS, MHKIS, MRICS,RPS(LS))  
 Authorized Land Surveyor

Tel: 26577726 Fax: 26588757 e-mail: [REDACTED]

Survey Sheet No.: 3-SW-11B

Scale 1:500

Plan No.: DN/91/1642F-S.tank

Date: 10-07-2024