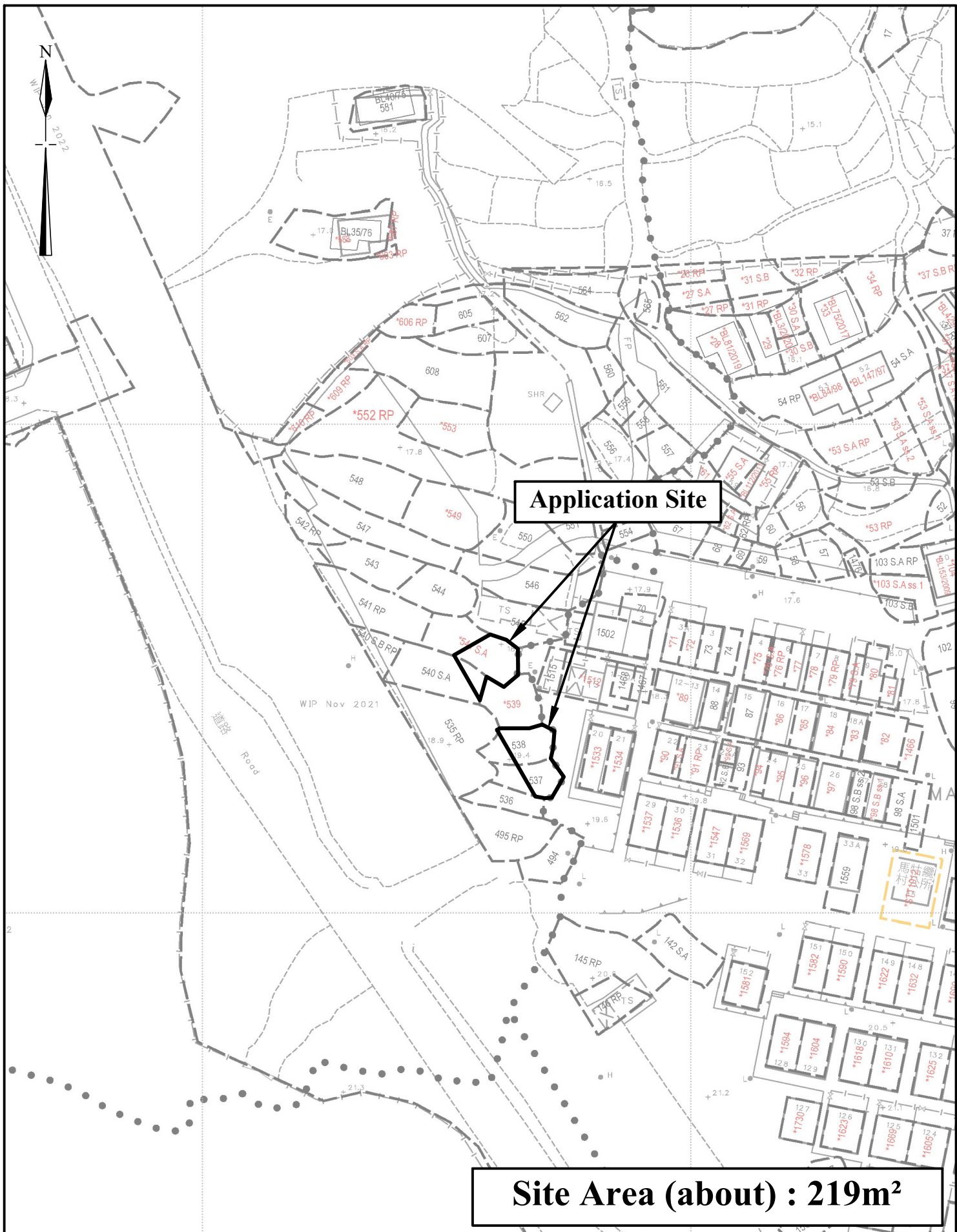


Extracted from Approved Shap Sz Heung Outline Zoning Plan No. S/NE-SSH/11

| | | |
|----------------------------|--|--|
| <p>N.T.S</p> | <p>Location Plan</p> | <p>Goldrich Planners & Surveyors Ltd.</p> |
| <p>January 2024</p> | <p>Lots 537(part), 538(part), 540 S.A(part) and 541 S.A(part) in D.D.218 Ma Kwu Lam, Sai Kung North, N.T</p> | <p>Plan 1 (P 23055B)</p> |



Application Site

Site Area (about) : 219m²

1:1000

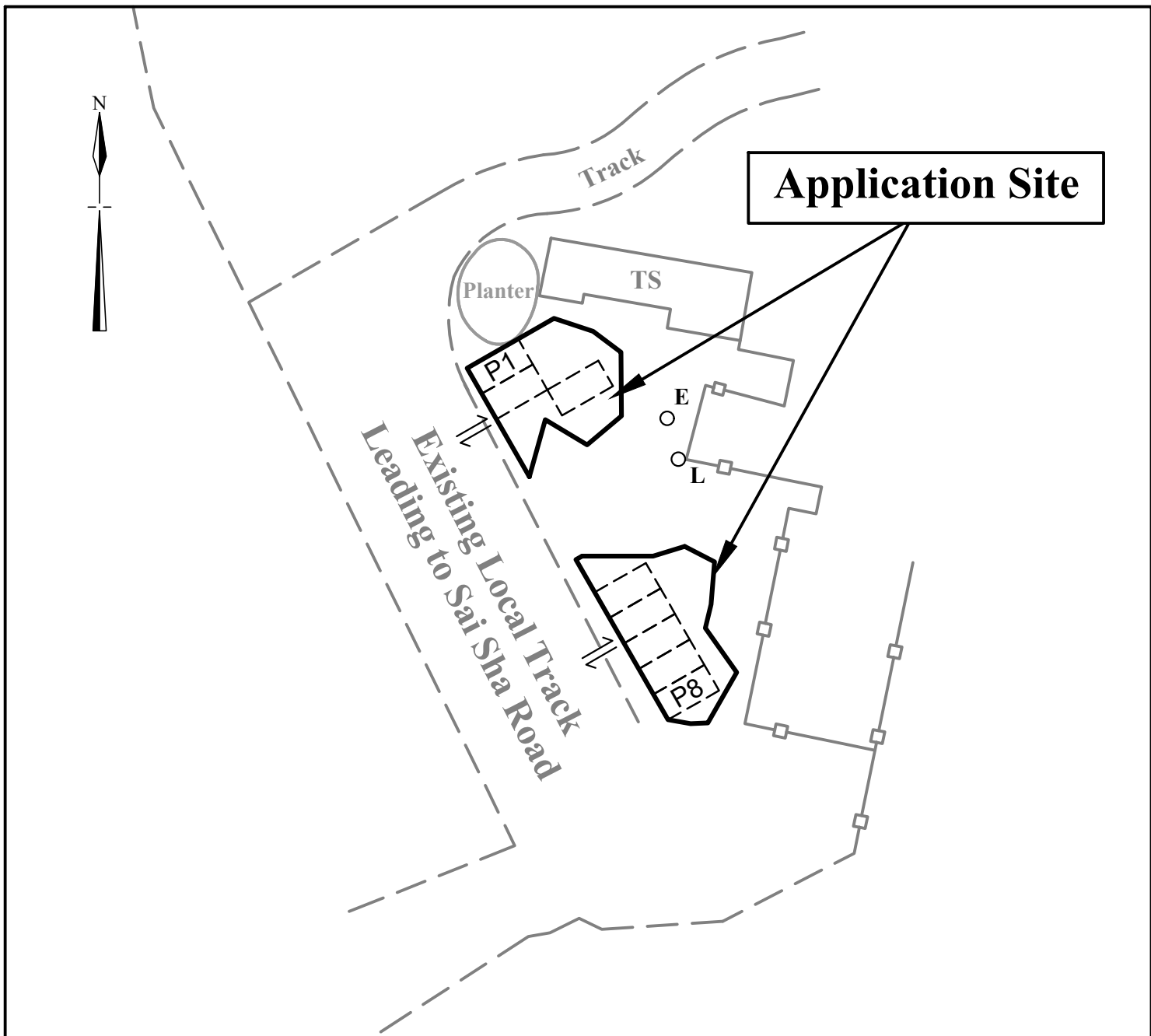
Lot Index Plan

**Goldrich Planners &
Surveyors Ltd.**

January 2024

**Lots 537(part), 538(part), 540 S.A(part) and
541 S.A(part) in D.D.218
Ma Kwu Lam, Sai Kung North, N.T**

**Plan 2
(P 23055B)**



Legend

- Existing Fencing
- [P] Parking space for private cars (5m (L) x 2.5m (W))

Site Area (about) : 219m²

| | | |
|--------------|--|---|
| 1:500 | Layout Plan | Goldrich Planners & Surveyors Ltd. |
| January 2024 | Lots 537(part), 538(part), 540 S.A(part) and 541 S.A(part) in D.D.218 Ma Kwu Lam, Sai Kung North, N.T | Plan 3 (P 23055B) |