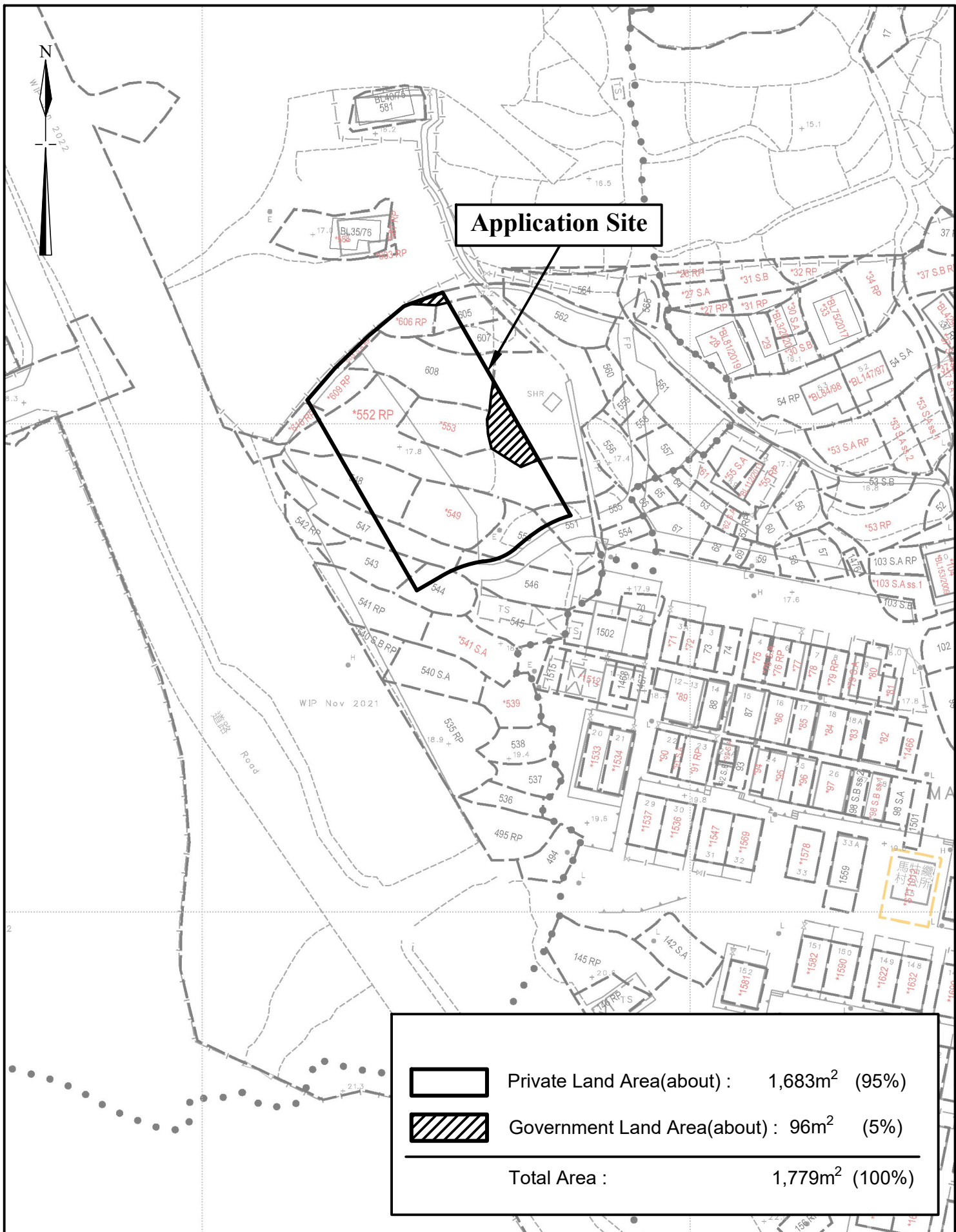
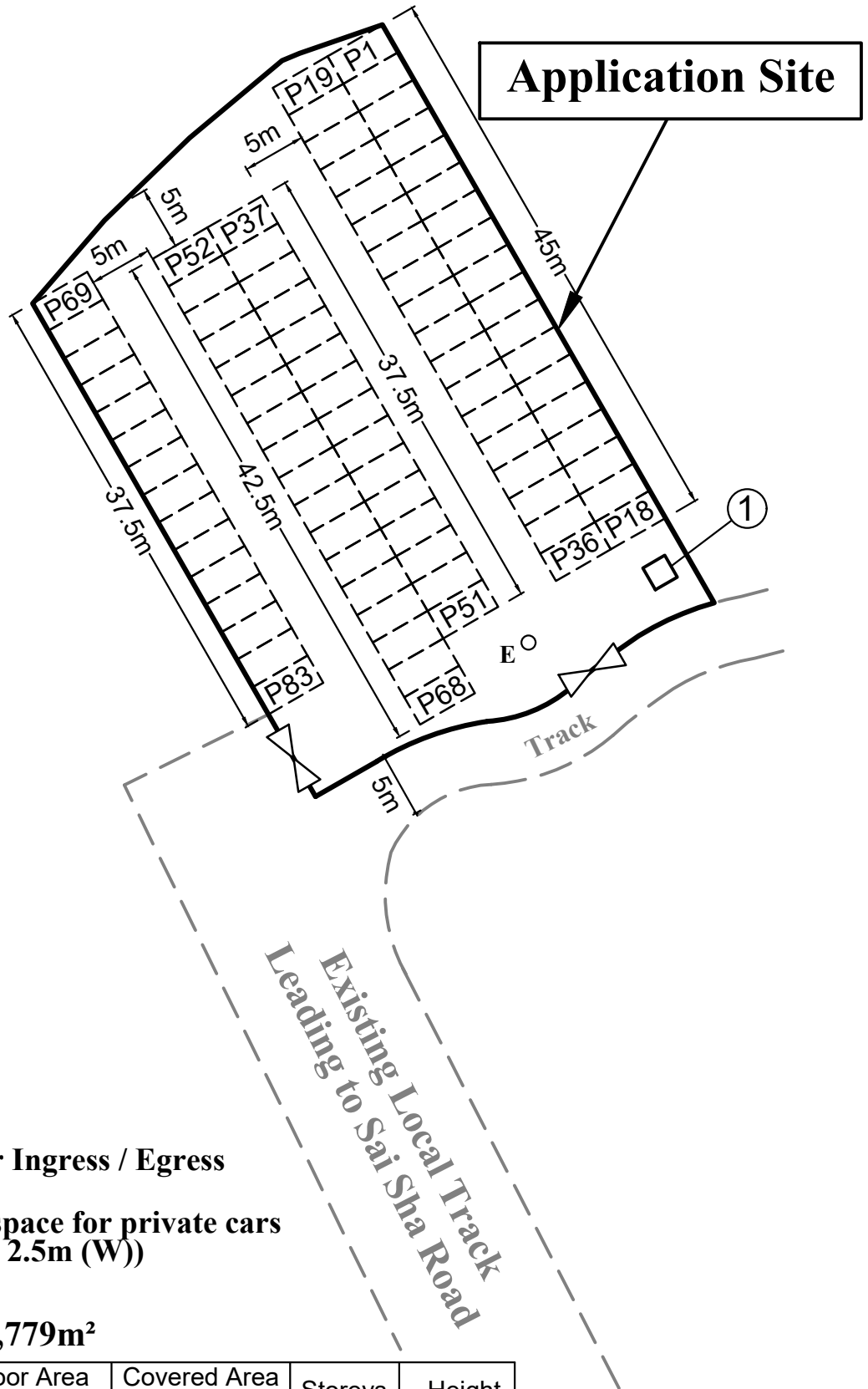


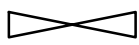
Extracted from Approved Shap Sz Heung Outline Zoning Plan No. S/NE-SSH/11

<p>N.T.S</p>	<p>Location Plan</p>	<p>Goldrich Planners & Surveyors Ltd.</p>
<p>January 2024</p>	<p>Lots 543(part), 544(part), 546(part), 547(part), 548(part), 549, 550(part), 551(part), 552 RP(part), 553, 603 SA RP, 605(part), 606 RP, 607(part), 608(part), 609 RP and 610 RP(part) in D.D.218 and adjoining government land Ma Kwu Lam, Sai Kung North, N.T</p>	<p>Plan 1 (P 23055A)</p>





Legend



Vehicular Ingress / Egress



**Parking space for private cars
(5m (L) x 2.5m (W))**

Site Area (about) : 1,779m²

No.	Uses	Floor Area (about)	Covered Area (about)	Storeys	Height
1	Guard Room	4 m ²	4 m ²	1	3m
Total		4 m ²	4 m ²		

1:500

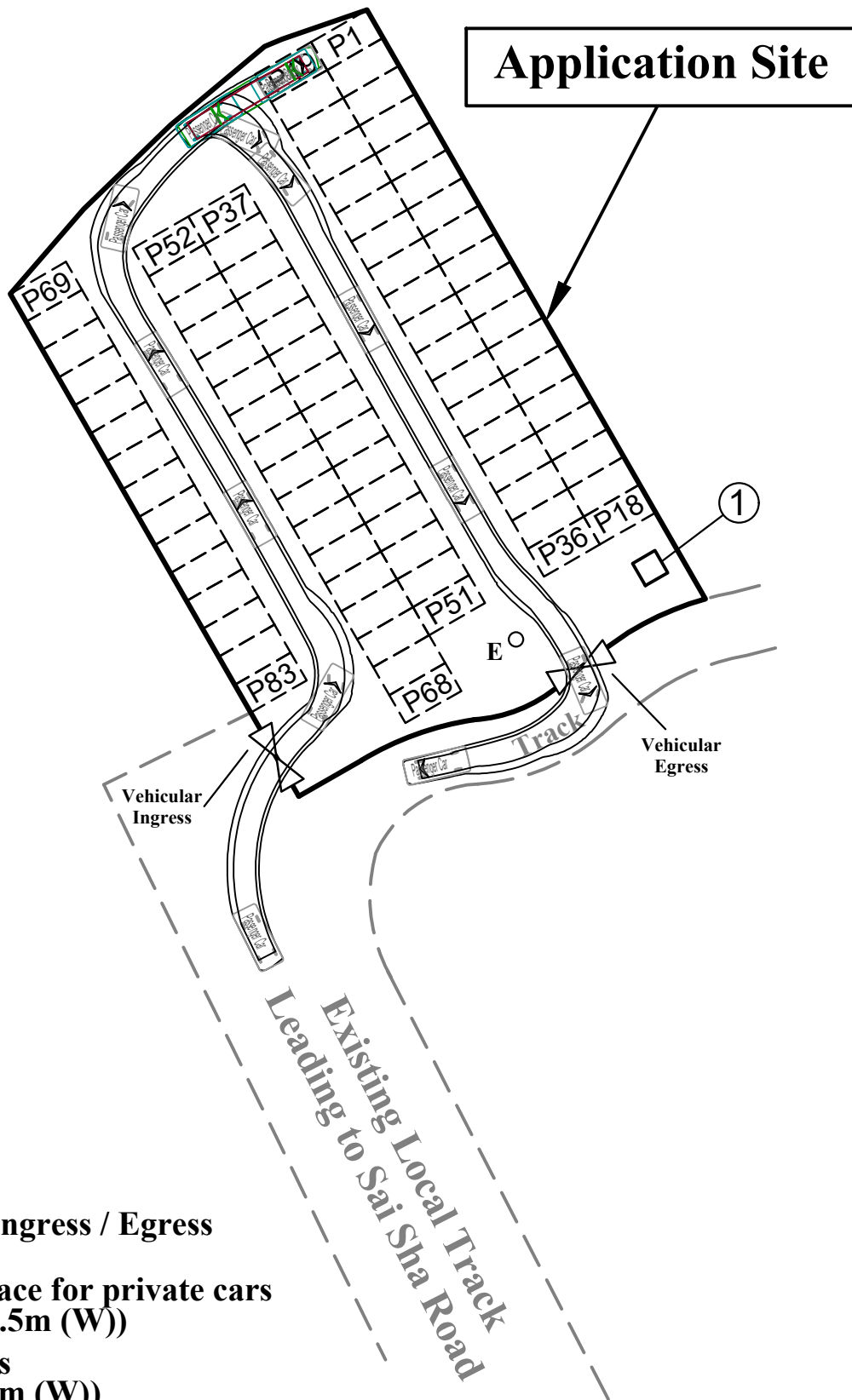
Layout Plan

**Goldrich Planners &
Surveyors Ltd.**


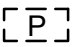

January 2024

Lots 543(part), 544(part), 546(part), 547(part), 548(part), 549, 550(part), 551(part), 552 RP(part), 553, 603 SA RP, 605(part), 606 RP, 607(part), 608(part), 609 RP and 610 RP(part) in D.D.218 and adjoining government land Ma Kwu Lam, Sai Kung North, N.T

**Plan 3
(P 23055A)**



Legend

-  Vehicular Ingress / Egress
-  Parking space for private cars
(5m (L) x 2.5m (W))
-  Private cars
(5m (L) x 2m (W))

Site Area (about) : 1,779m²

1:500	Swept Path Analysis Lots 543(part), 544(part), 546(part), 547(part), 548(part), 549, 550(part), 551(part), 552 RP(part), 553, 603 SA RP, 605(part), 606 RP, 607(part), 608(part), 609 RP and 610 RP(part) in D.D.218 and adjoining government land Ma Kwu Lam, Sai Kung North, N.T	Goldrich Planners & Surveyors Ltd.
January 2024		Plan 4 (P 23055A)