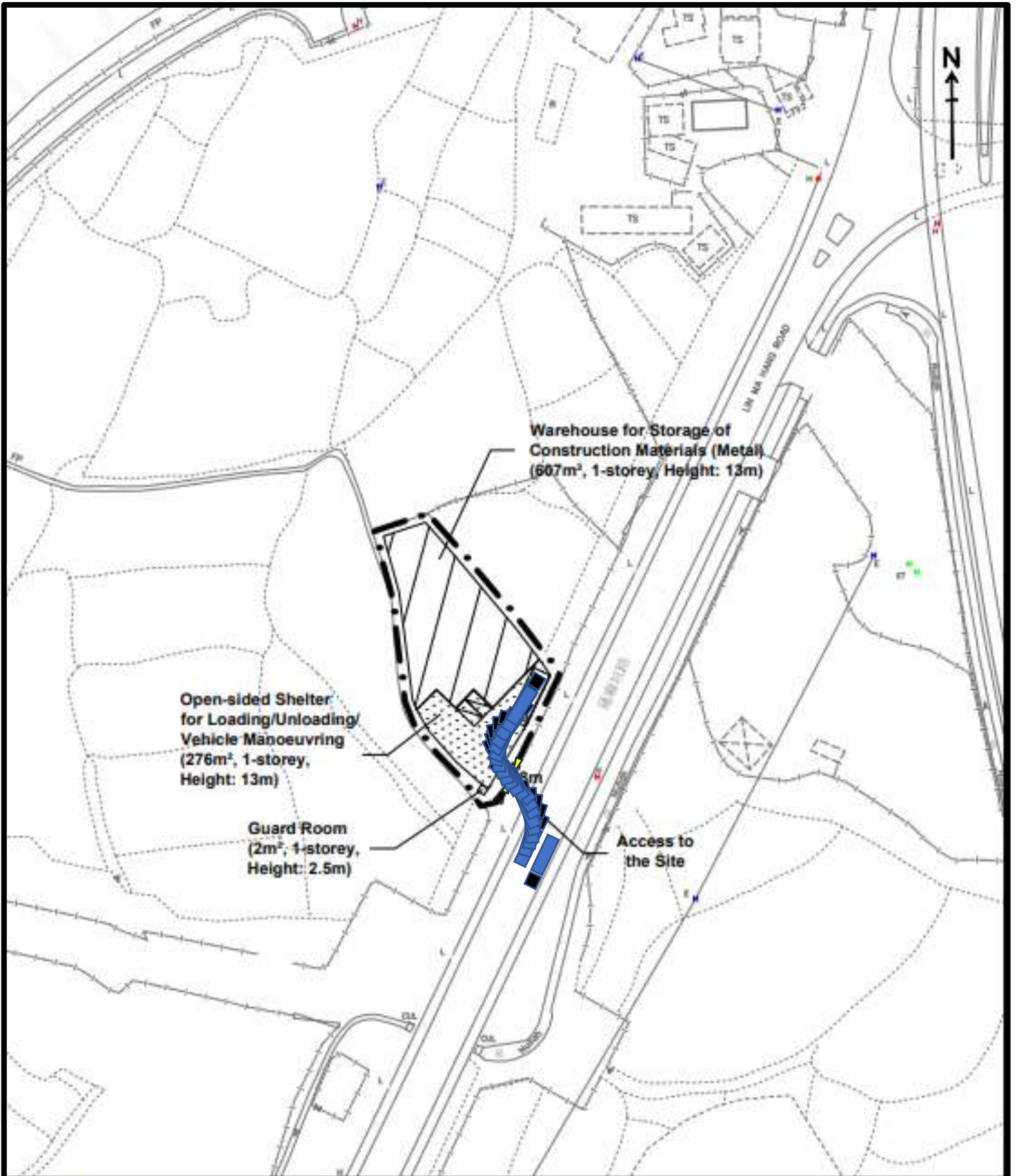


Annex 1

Swept Path Analysis
Visibility Splay

Figure 4A Layout Plan showing the Pedestrian Access and
Provision of Pedestrian Facilities

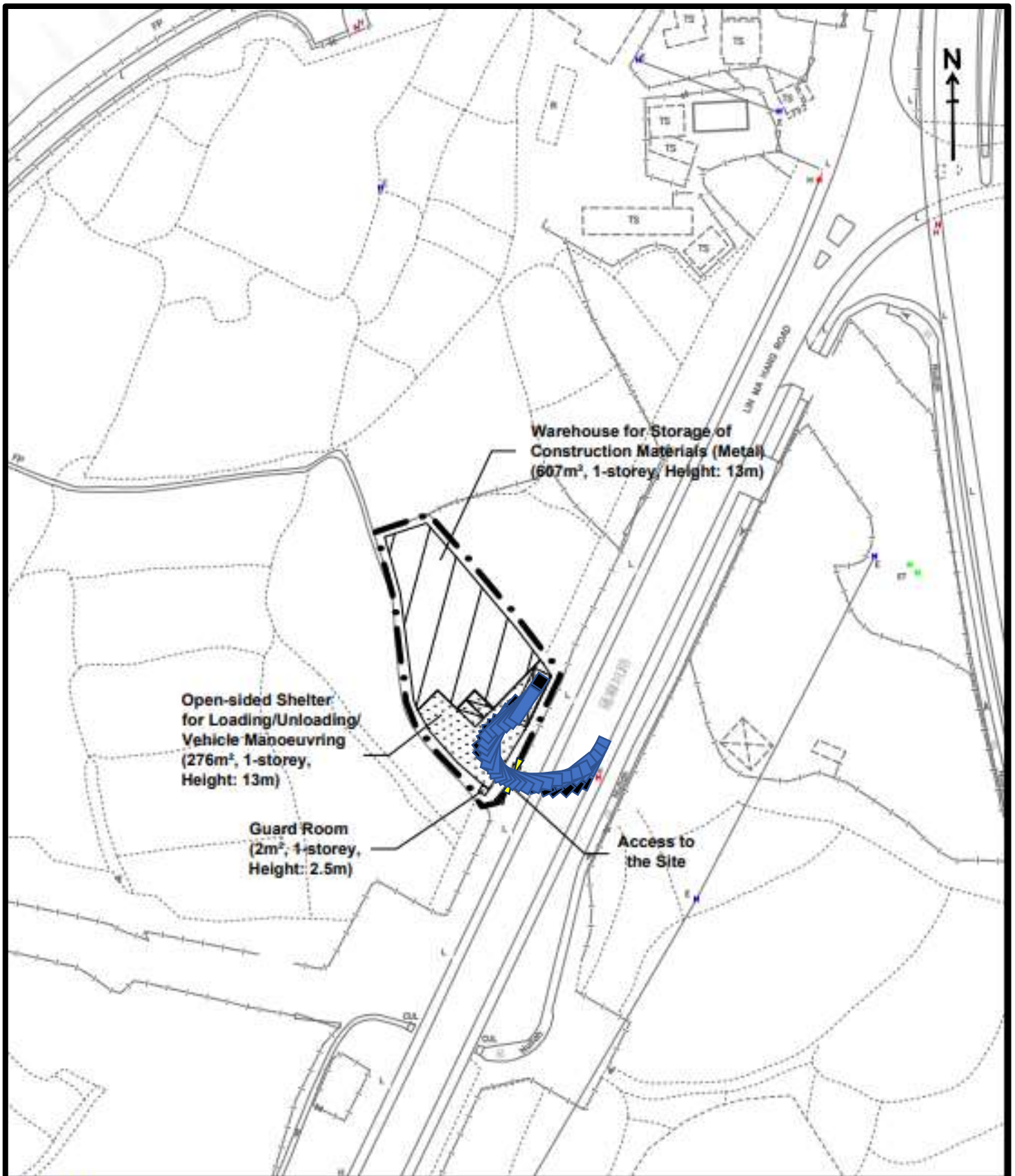


Legend:


- Application Site (about 1,105 sq.m.)
- Warehouse for Storage of Construction Materials (Metal)
- Loading/Unloading Space for Medium Goods Vehicle (3.5m x 1.1m) (1 no.)
- Parking Spaces for Staff/Visitors (2.5m x 5m) (2 nos.)
- For Identification Purpose

Swept Path Analysis No. 1
 Ingress route from the northbound
 of Lin Ma Hang Road

Drawing No. LMH 01A

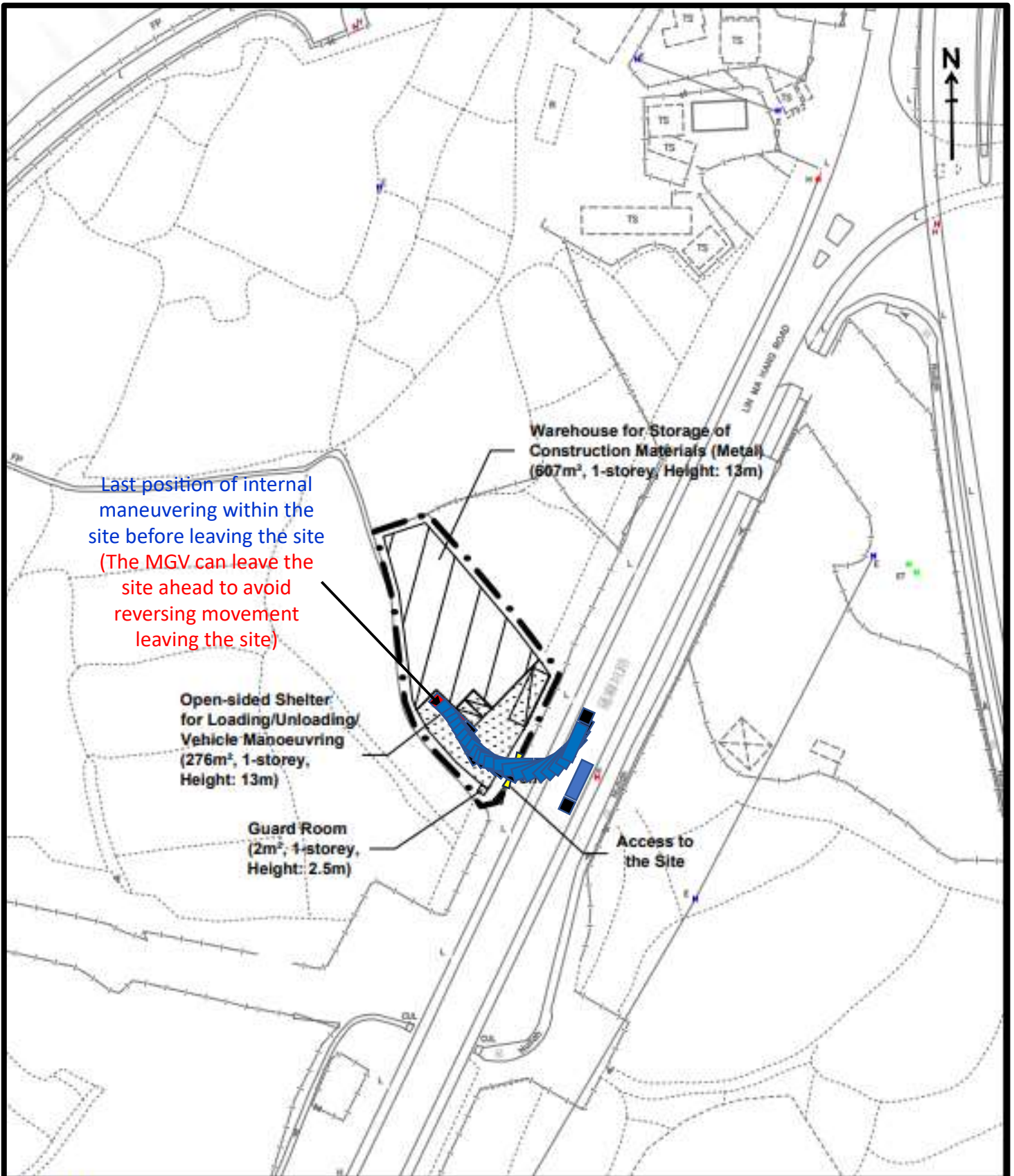


Legend:

-  Application Site (about 1,105 sq.m.)
-  Warehouse for Storage of Construction Materials (Metal)
-  Loading/Unloading Space for Medium Goods Vehicle (3.5m x 1.1m) (1 no.)
-  Parking Spaces for Staff/Visitors (2.5m x 5m) (2 nos.)
-  For Identification Purpose

Swept Path Analysis No. 2
Ingress route from the southbound
of Lin Ma Hang Road

Drawing No. LMH 02A



Last position of internal maneuvering within the site before leaving the site
 (The MGV can leave the site ahead to avoid reversing movement leaving the site)

Open-sided Shelter for Loading/Unloading/ Vehicle Manoeuvring
 (276m², 1-storey, Height: 13m)

Guard Room
 (2m², 1-storey, Height: 2.5m)

Warehouse for Storage of Construction Materials (Metal)
 (607m², 1-storey, Height: 13m)

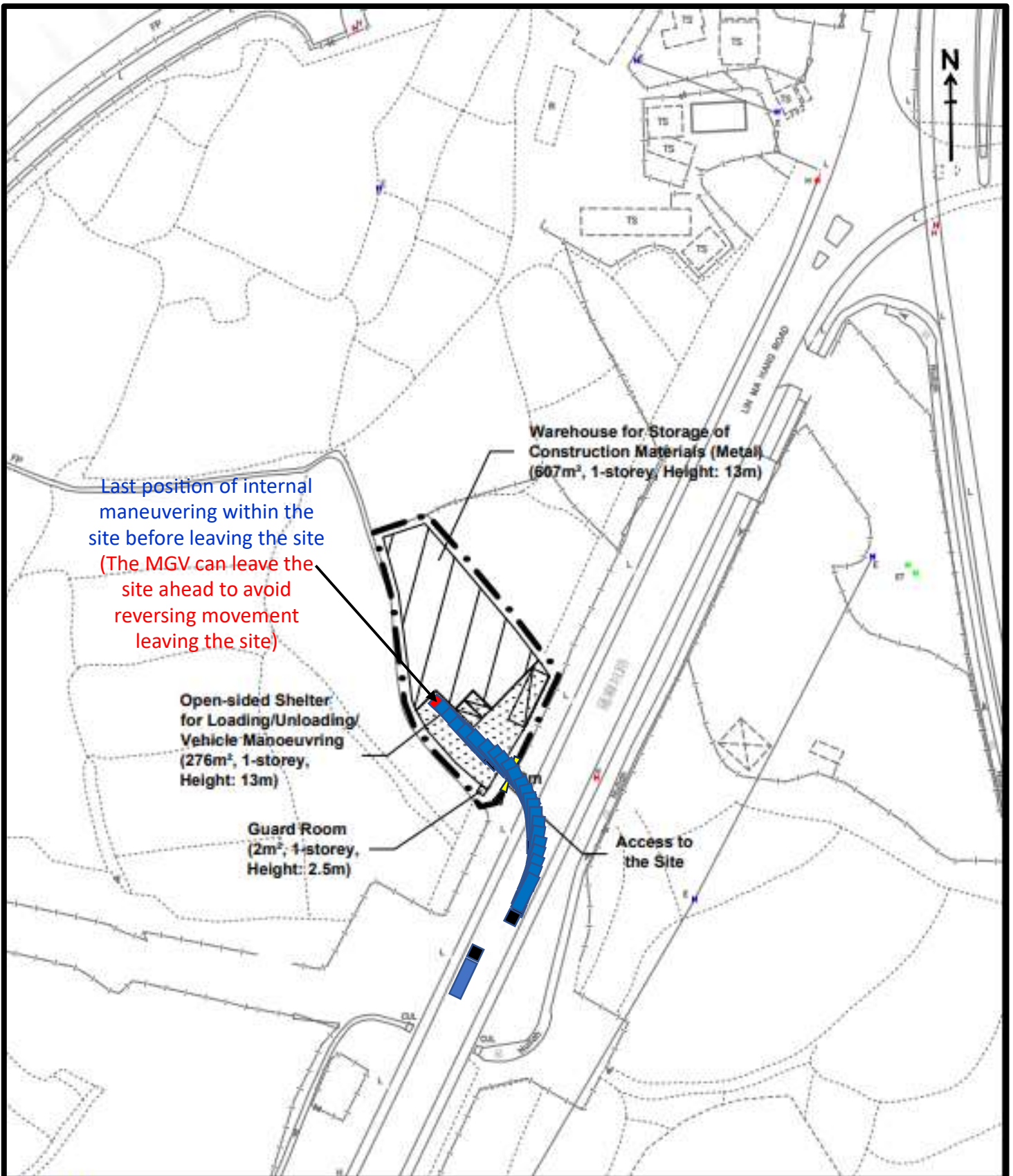
Access to the Site

Legend:

- Application Site (about 1,105 sq.m.)
- Warehouse for Storage of Construction Materials (Metal)
- Loading/Unloading Space for Medium Goods Vehicle (3.5m x 11m) (1 no.)
- Parking Spaces for Staff/Visitors (2.5m x 5m) (2 nos.)
- For Identification Purpose

Swept Path Analysis No. 5
 Egress route to the northbound of Lin Ma Hang Road exiting site

Drawing No. LMH 05



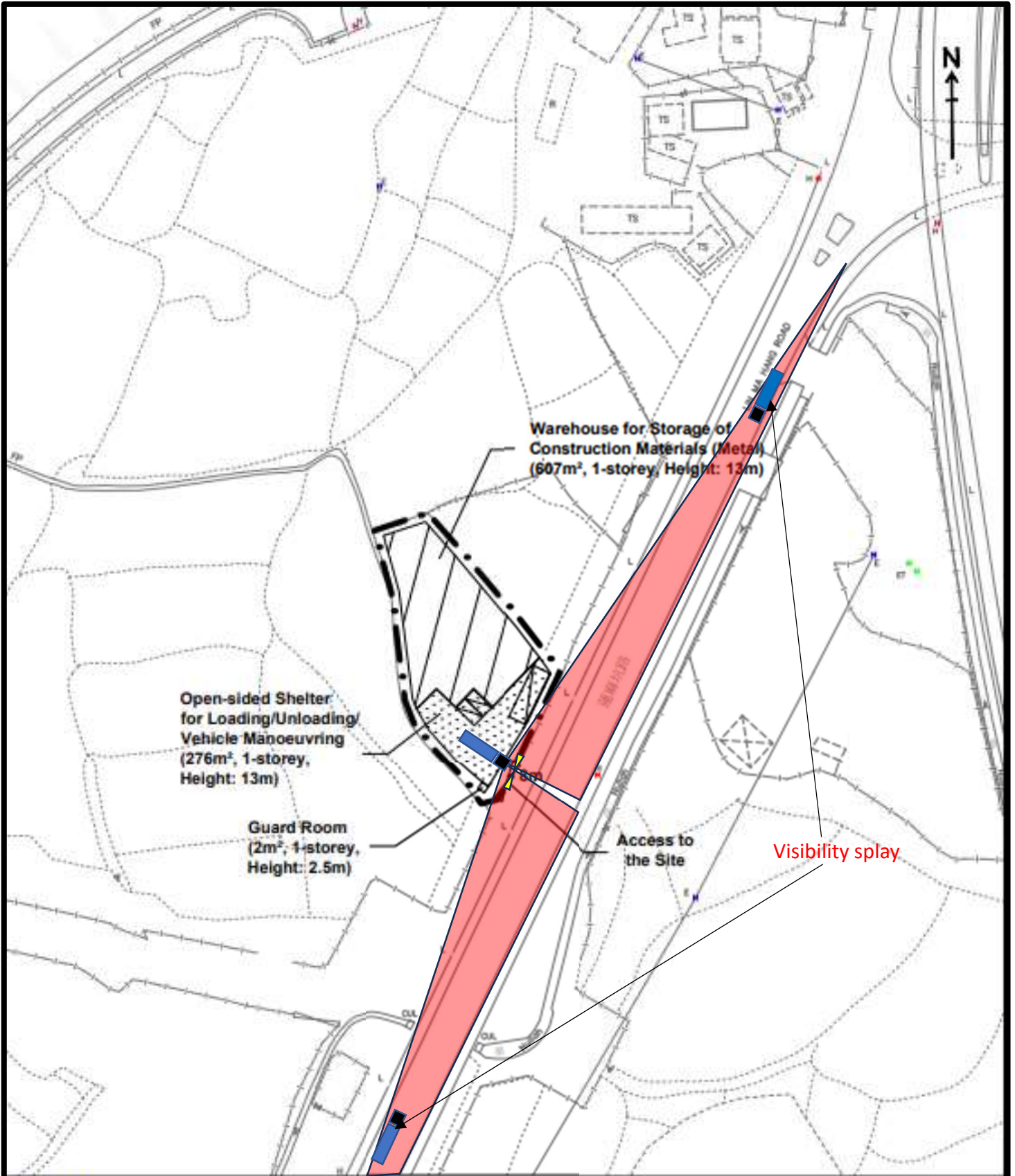
Legend:

- Application Site (about 1,105 sq.m.)
- Warehouse for Storage of Construction Materials (Metal)
- Loading/Unloading Space for Medium Goods Vehicle (3.5m x 1 1m) (1 no.)
- Parking Spaces for Staff/Visitors (2.5m x 5m) (2 nos.)
- For Identification Purpose

Swept Path Analysis No. 6

Egress route to the southbound of Lin Ma Hang Road exiting site

Drawing No. LMH 06



Visibility Splay

Drawing No. LMH 07

