
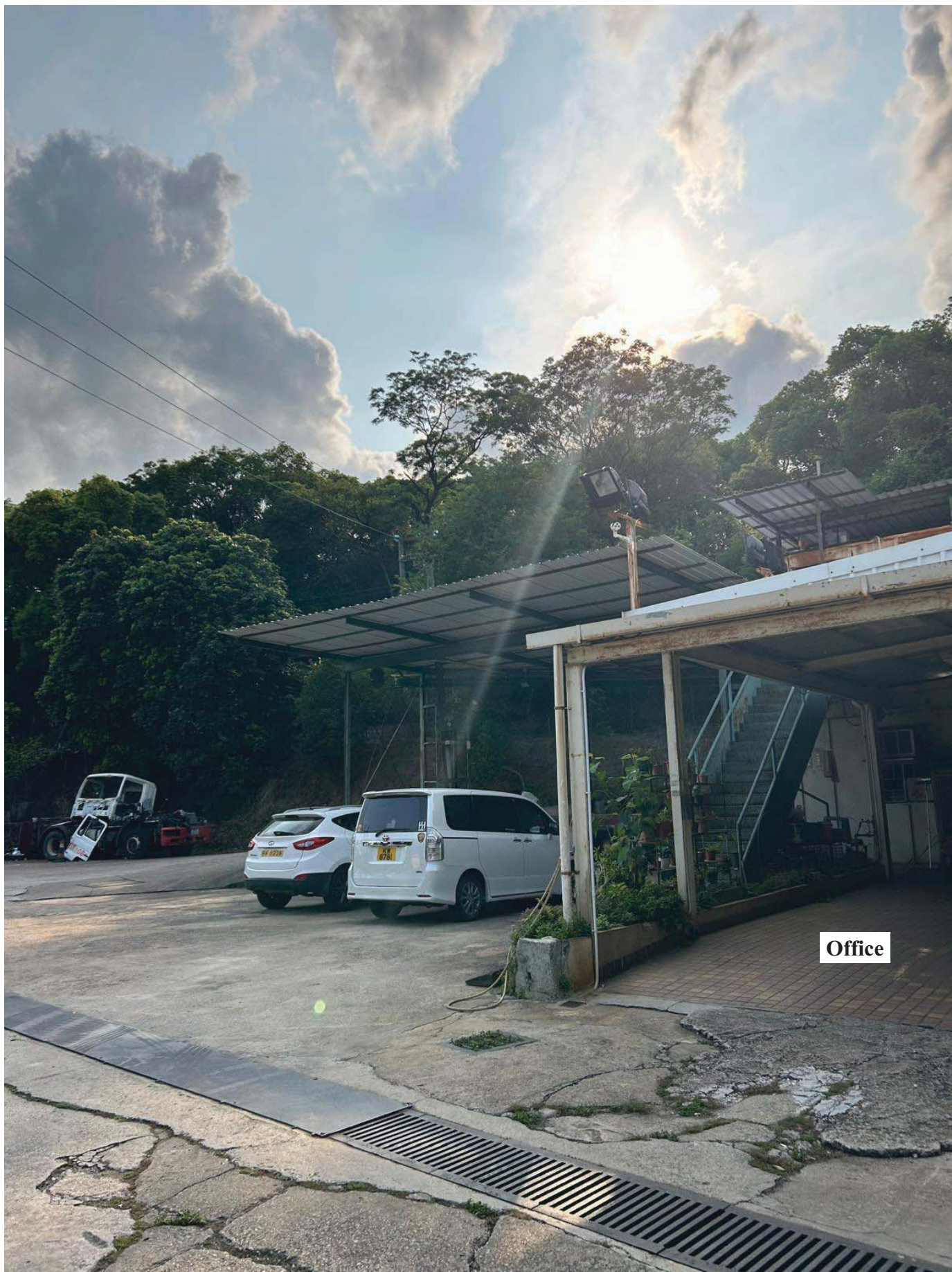


## Legend

 Viewpoint of site photographs

1:1000	<b>Site Conditions of the Site and its Adjoining Area</b>  Lot 2159 (Part) in D.D. 76 and Adjoining Government Land Wang Leng, Ping Che, New Territories	<b>Goldrich Planners &amp; Surveyors Ltd.</b>
April 2024		<b>Plan 8 ( P 10105 )</b>



Viewpoint 1





**Viewpoint 2**





Warehouse

會庫重地  
閒人免進

貨倉重地  
閒人免進

Viewpoint 3





Warehouse

Viewpoint 4





Warehouse

Viewpoint 5

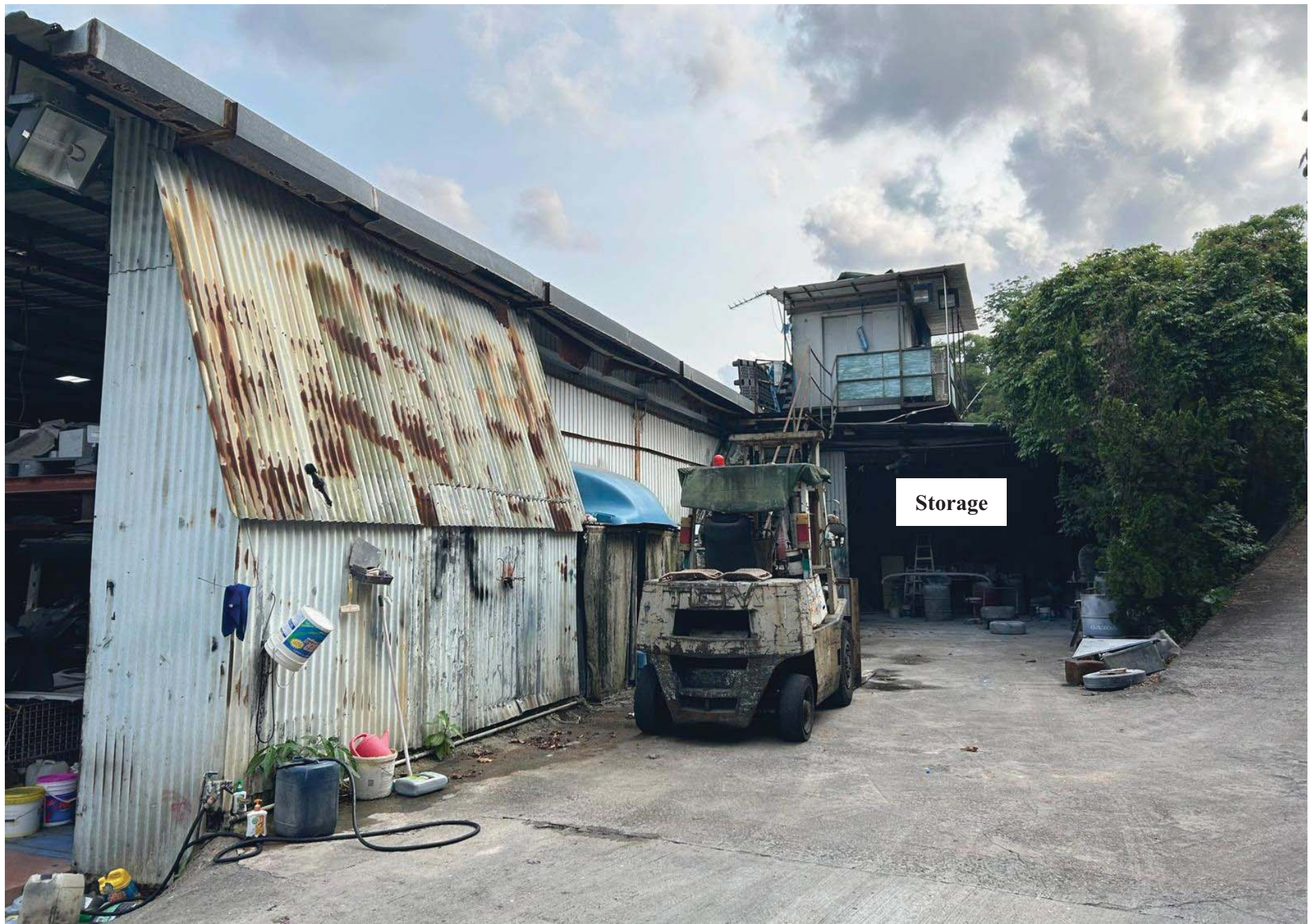




**Vehicle repair workshop  
(excluding container vehicle)  
and storage of vehicle parts**

**Viewpoint 6**





**Viewpoint 7**