

**Form No. S.16-I\_Sep 2023 Section 10 Justification**  
**Yung Shue O Marine Aquaculture Association**

This proposal shall be a matter of "public utility installation". It addresses the necessity of the addition of electricity supply which goes towards serving public interest, benefiting the fish farmers and the residents around the vicinity.

此計劃書以「公用事業設施裝置」命題。建議增加電力供應以公眾利益為主要考慮，而電力供應為周邊居民及漁民必需物。

While ensuring the capacity for a sustainable development in the future, the key benefit of the proposed electrical meter kiosk will be higher efficiency for the workers in the fish farms around, pointing towards the licensees of the fish farms in the Yung Shue O Fish Culture Zone. An electrical meter kiosk will help powering and operating machinery in the transportation of heavy objects and supplies. The nearest electrical meter kiosk is located at Yung Shue O Pier at present, and is far from the newly proposed location in Ngau Yue Tau. Operations concerning the use of bigger machines beg the cooperation of other fishing boats to turn around and it decreases the overall efficiency of the fish farms.

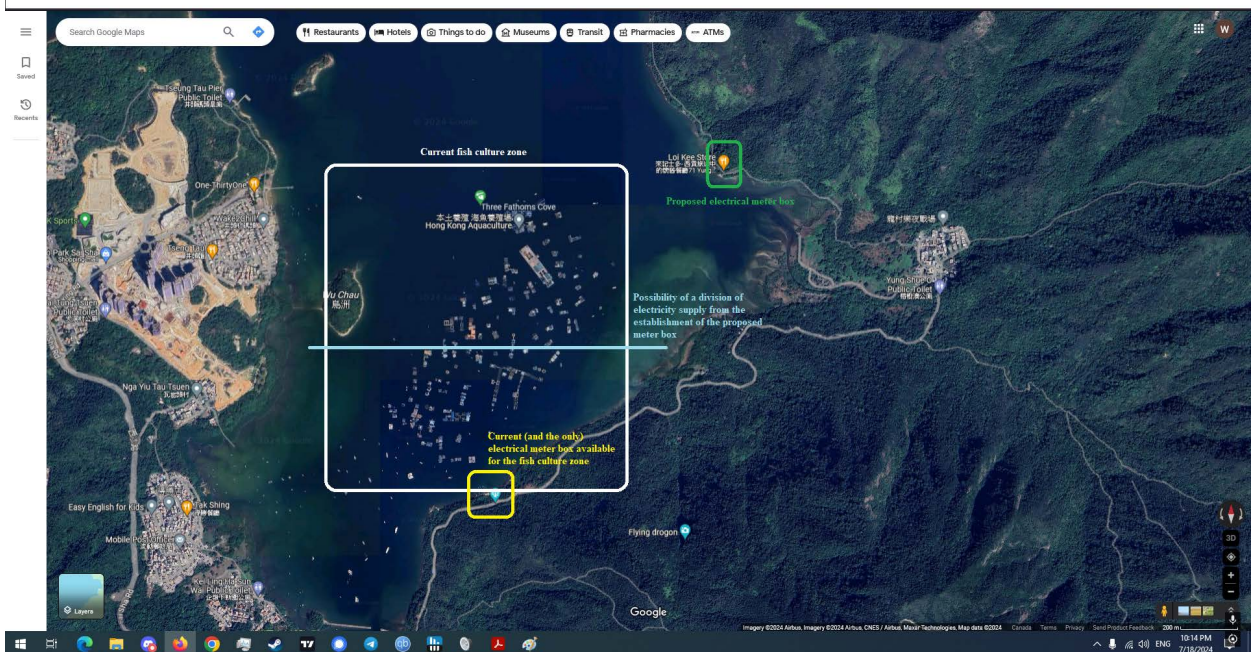
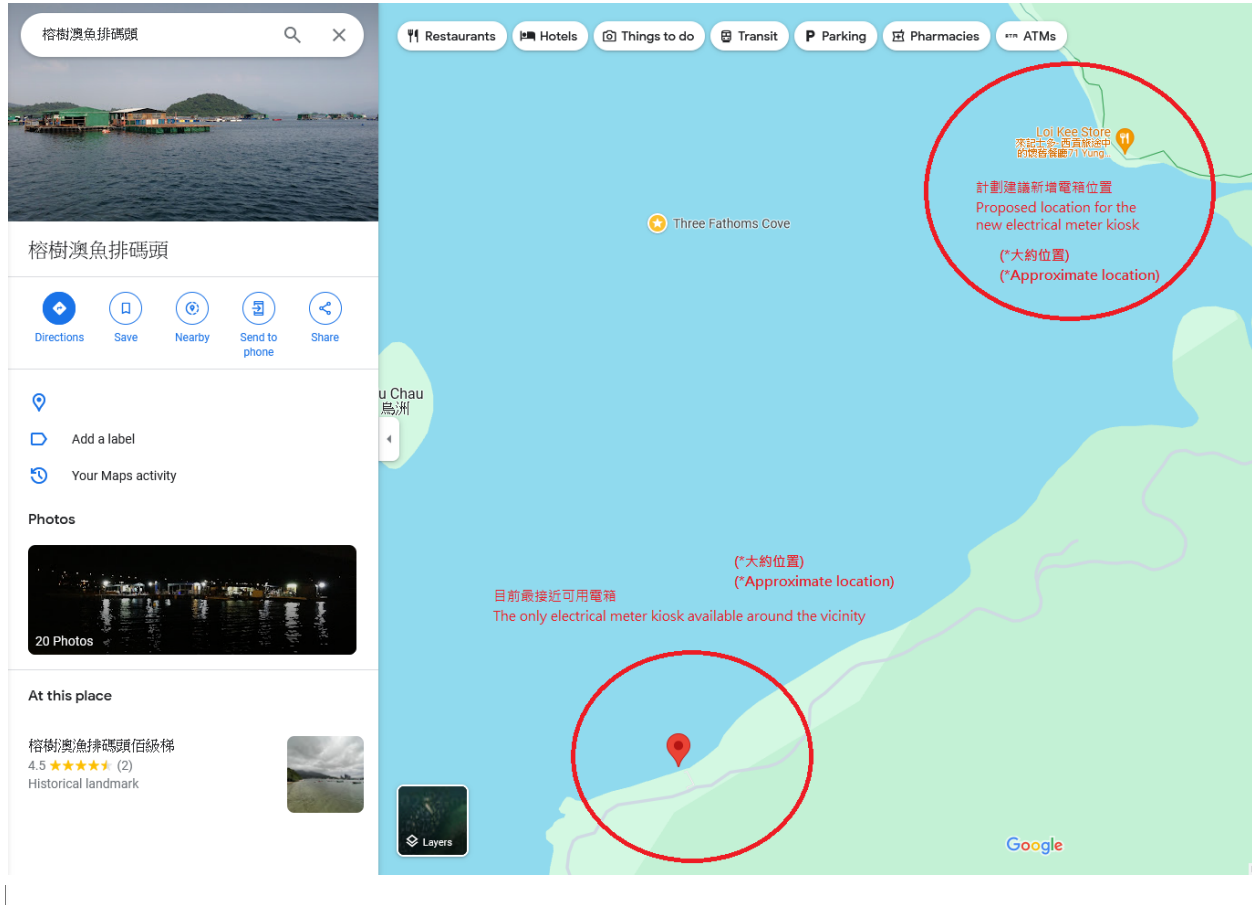
新增配電箱會提高附近榕樹凹漁類養殖區漁排工人工作效率，並能照顧未來發展需要。配電箱供應電力可用於使用機械運送大量物資，尤其是重物。目前最近之電箱位於榕樹澳碼頭，而非計劃所示之鰲魚頭。如需運作大型機器，其他魚排漁船便需繞道進行，整體效率便會有所降低。

In addition to developing an alternative location for electricity supply, safety is also a concern behind the suggestion. The density of the fish farms around the fish culture zone makes it somewhat unsafe to transport loads of supplies solely from the existing electrical meter kiosk (such as collision of boats, as well as disruptions of the structural bases of the fish farms). The current electricity supply may be marginally adequate for days without heavy demand for operations of larger scales, but it is inadequate for any plans (and the demands following the plans) for future development. An additional electricity supply will help planning for future expansions and projects. Please check about the locations in the submitted attachment, "20240807 Description of the existing electricity supply network and exact location from CLP".

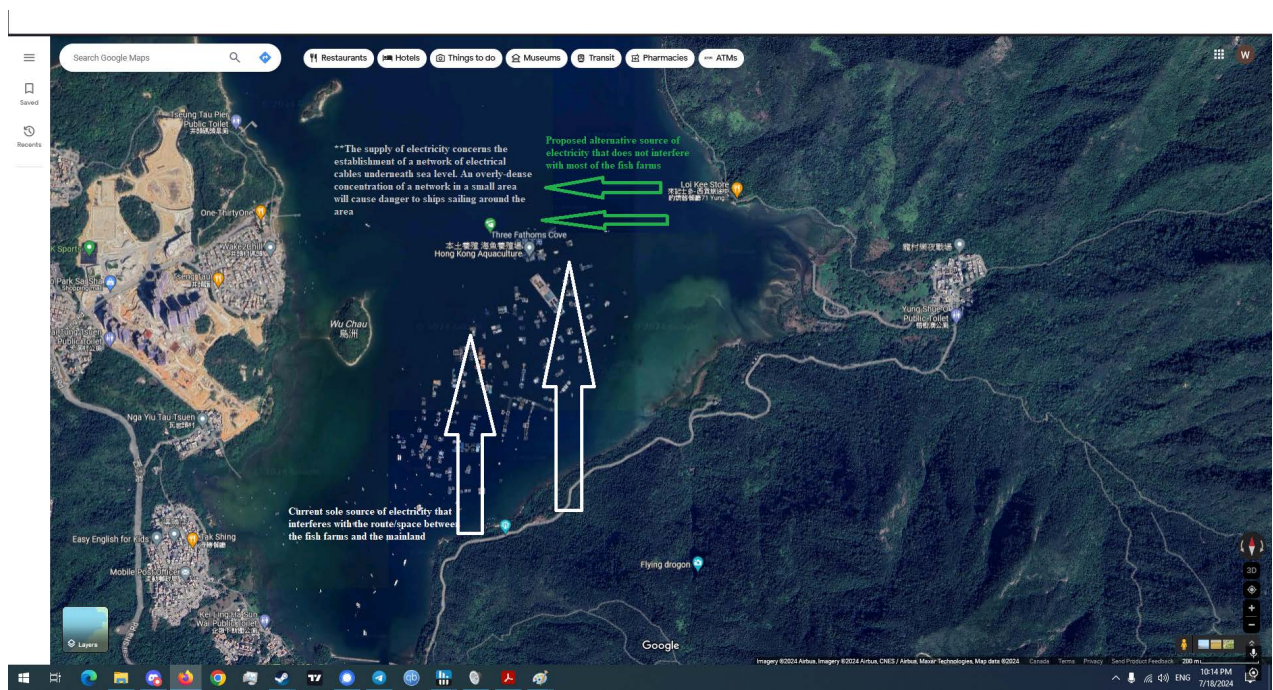
除增加電力供應可能性外，提出此建議亦有安全考慮。榕樹澳碼頭至榕樹凹養殖區之間有多個魚排，除了源於密度而來之安全隱憂（如撞船、行駛時撞到魚排構築物等等），即使現有電力供應足夠讓所有魚排於沒有較大型運作時勉強運作，仍遠遠不足以滿足未來發展

# Form No. S.16-I\_Sep 2023 Section 10 Justification Yung Shue O Marine Aquaculture Association

之需。新增一地作供電之用有助奠定未來發展。詳細放大圖請看隨本建議書附帶中電圖則 - "20240807 Description of the existing electricity supply network and exact location from CLP"。



# Form No. S.16-I\_Sep 2023 Section 10 Justification Yung Shue O Marine Aquaculture Association



Everything added up would render the installation of the electrical meter kiosk necessary in the long run.

縱觀即時需要，及長期發展，於此特定地點新增配電箱實屬必要。