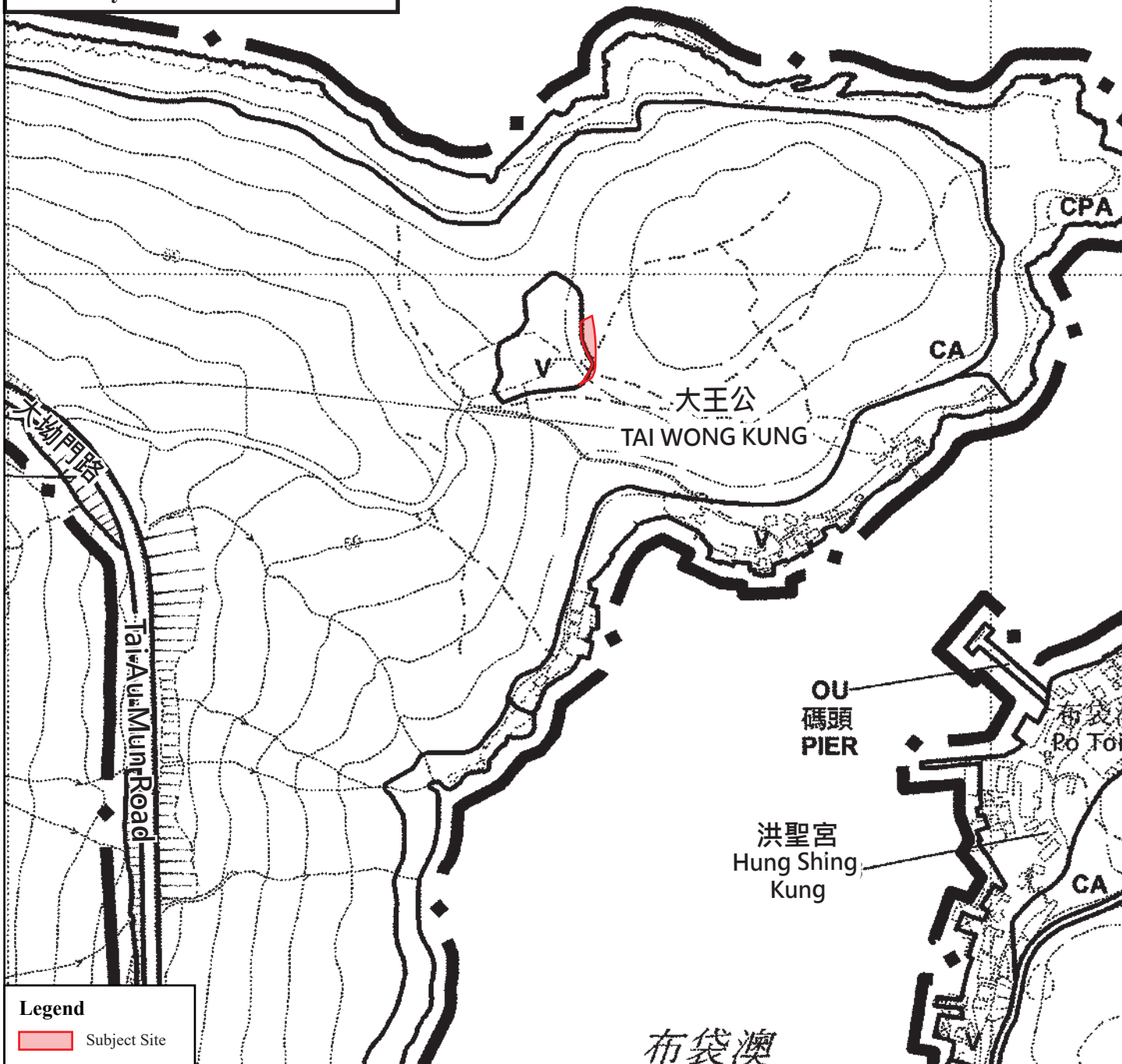


Figures



Key Plan 1 : 40 000



Legend

 Subject Site

Site Location Plan

(Extract from the Approved Clear Water Bay Peninsula South Outline Zoning Plan No. S/SK-CWBS/2)

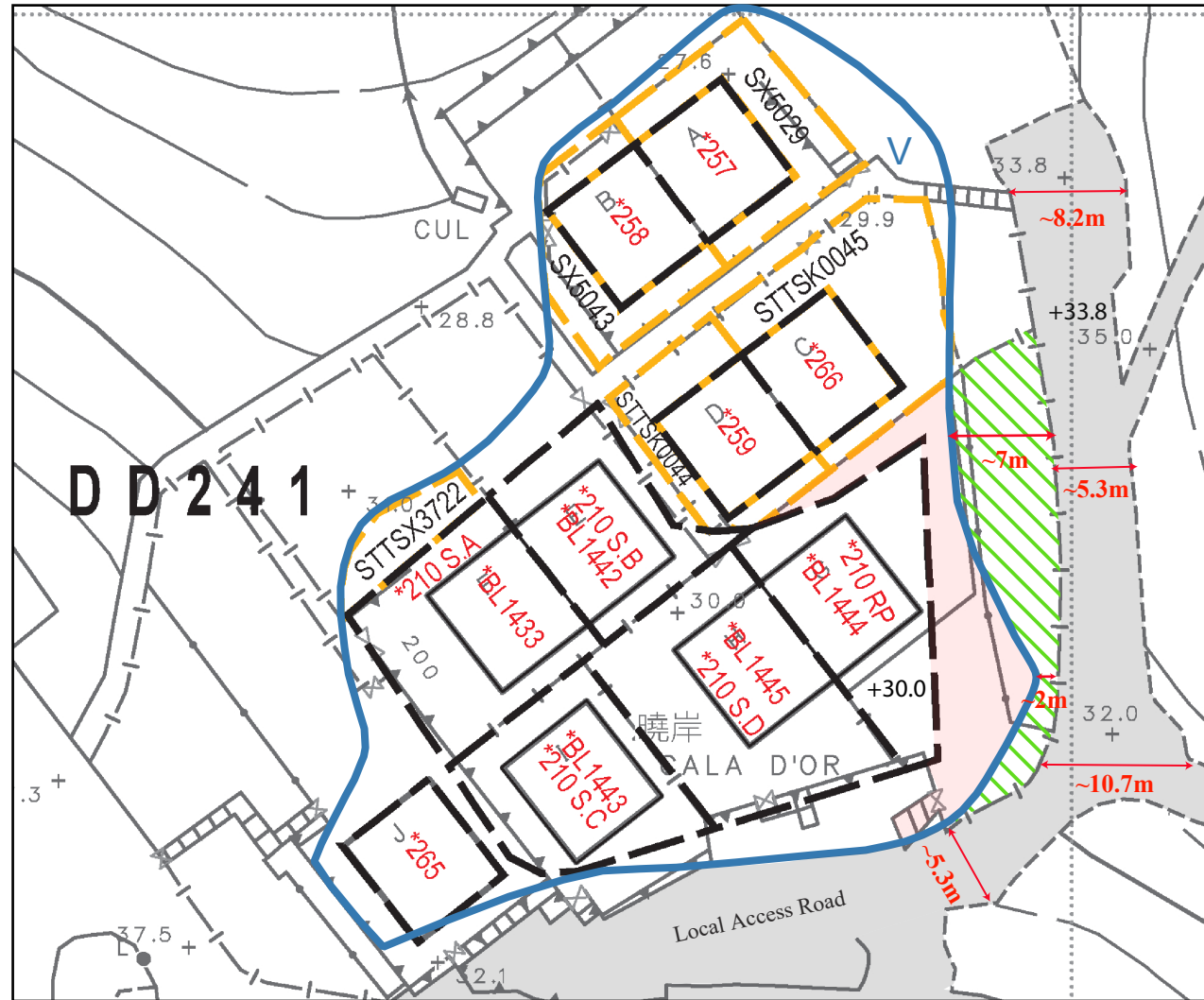
Figure 1

1 : 3 000






弘域城市規劃顧問有限公司
VISION PLANNING CONSULTANTS LTD.

香港北角蜆殼街 9-23 號秀明中心 20 樓 C 室
Unit C, 20F., Seabright Plaza, 9-23 Shell Street, North Point, Hong Kong.
Tel : (852) 2566 9988 Fax: (852) 2566 9978 E-mail: vision@visionplanning.com.hk



Legend

-  Subject Site (within "CA" zone) (~150m²)
-  Extension of GL for STT Application
-  "V" Zone

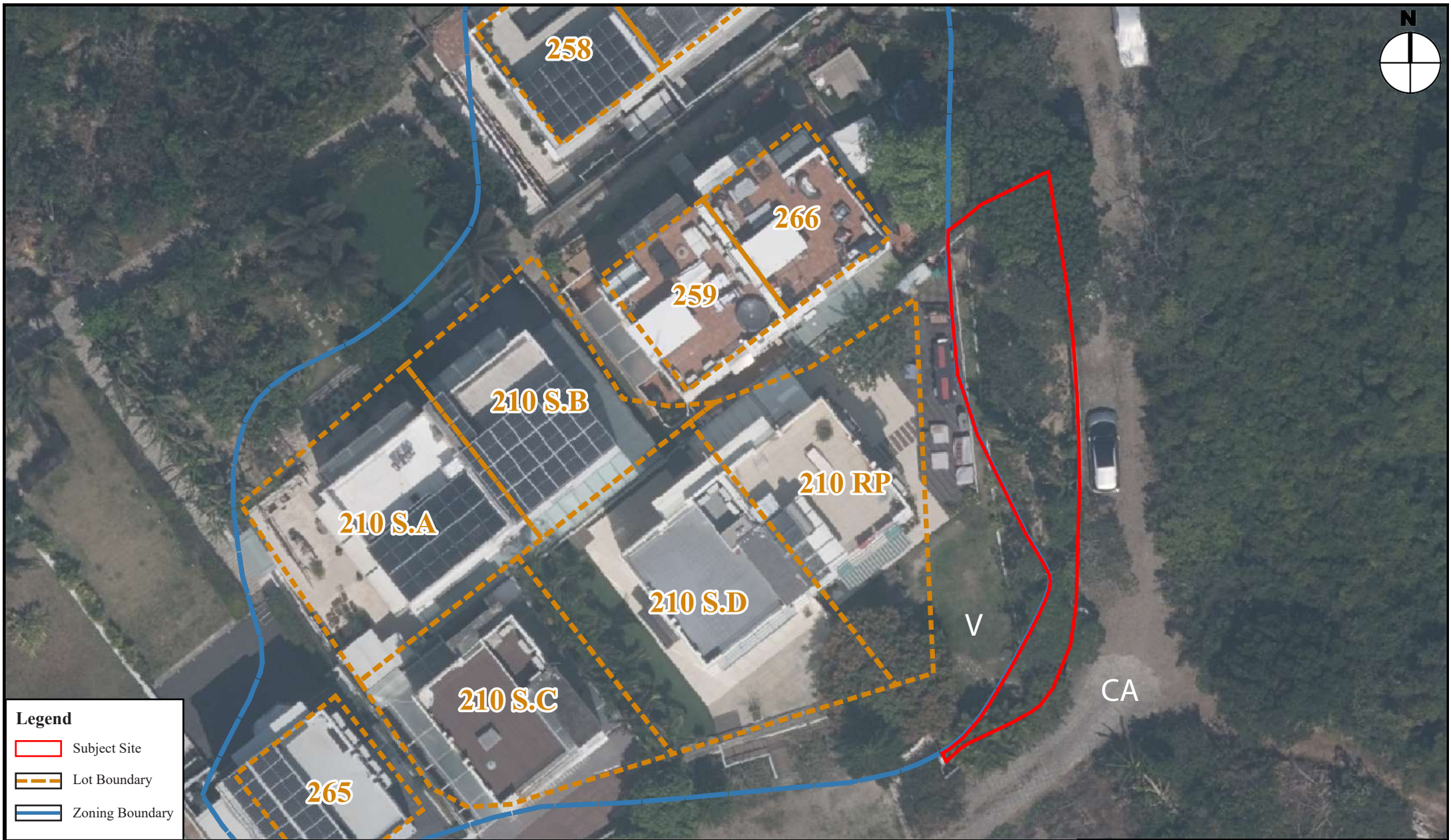
Lot Index Plan of the Subject Site
(Base Plan Extracted from the Lot Index Plan
No. ags_S00000130075_0001)

Figure 2

1 : 500



弘域城市規劃顧問有限公司
VISION PLANNING CONSULTANTS LTD.
香港北角銀禧街 9-23 號秀明中心 20 樓 C 室
Unit C, 20/F., Seabright Plaza, 9-23 Shell Street, North Point, Hong Kong.
Tel : (852) 2566 9988 Fax: (852) 2566 9978 E-mail: vision@visionplanning.com.hk



Aerial Photo of the Subject Site

(Base Plan Extracted from Aerial Photo No. E198906C taken by Lands Department on 6 Mar 2023)

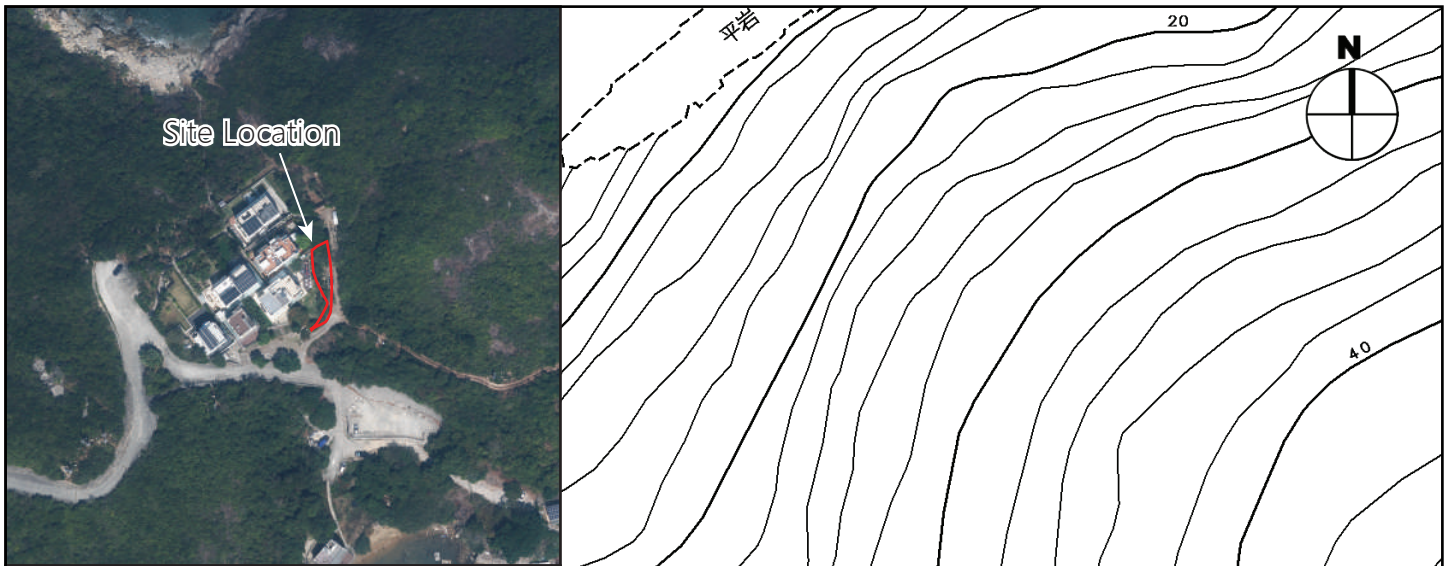
Figure 3

1 : 300

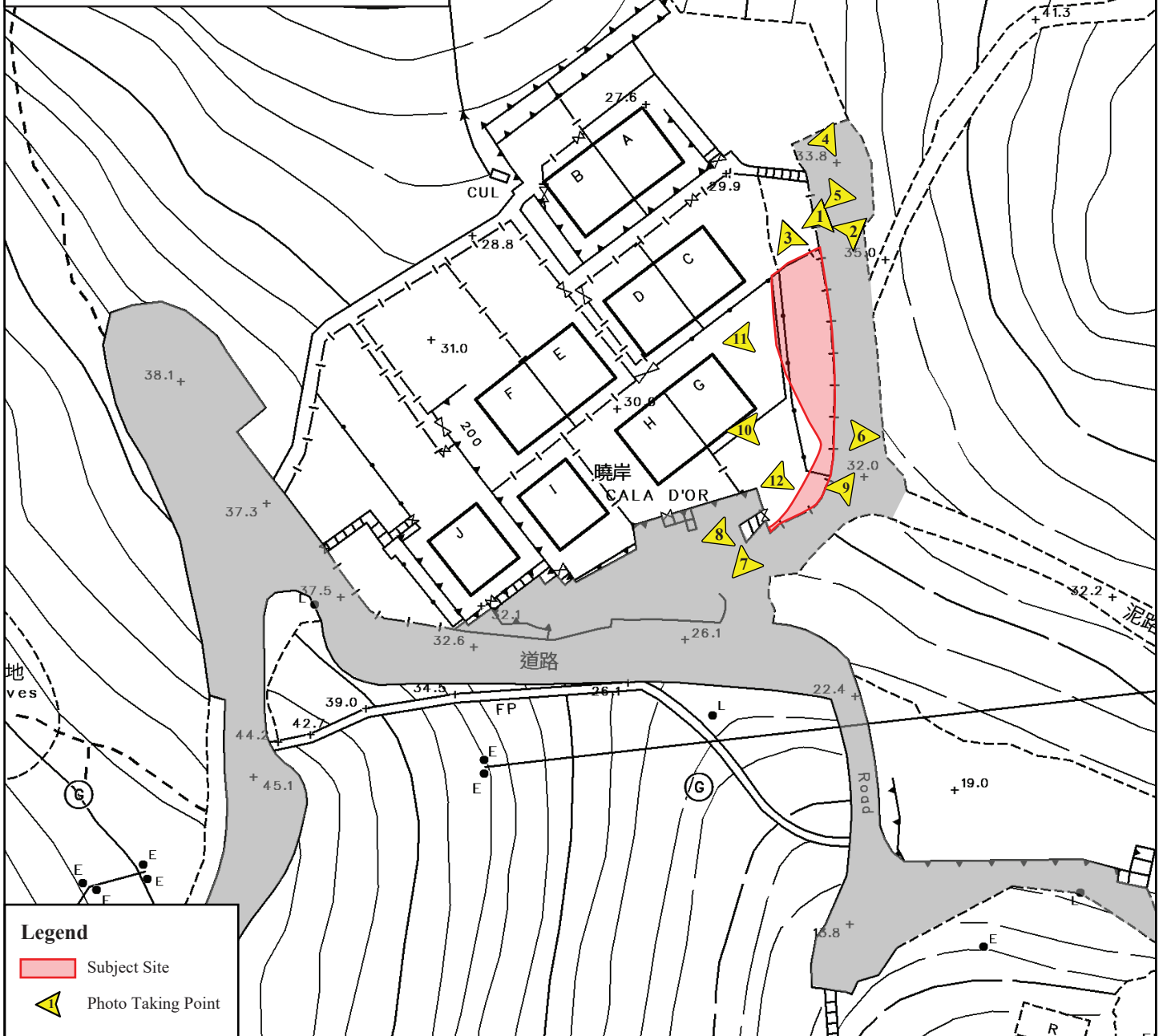


弘域城市規劃顧問有限公司
VISION PLANNING CONSULTANTS LTD.

香港北角蝦殼街 9-23 號秀明中心 20 樓 C 室
 Unit C, 20/F., Seabright Plaza, 9-23 Shell Street, North Point, Hong Kong.
 Tel : (852) 2566 9988 Fax: (852) 2566 9978 E-mail: vision@visionplanning.com.hk



Key Plan 1 : 3 000



The Site and Its Surroundings (Photo Index Plan)

(Extracted from Government Survey Sheet No.: 12-SW-13A and Aerial Photo No. 2023_E198906C taken by Lands Department on 6 Mar 2023)

Figure 4

1 : 750



弘域城市規劃顧問有限公司
VISION PLANNING CONSULTANTS LTD.

香港北角曉岸街 9-23 號 20 樓 C 室
Unit C, 20/F., Seabright Plaza, 9-23 Shell Street, North Point, Hong Kong.
Tel : (852) 2566 9988 Fax : (852) 2566 9978 E-mail : vision@visionplanning.com.hk



Photo Plate No. 1

VISION

弘域城市規劃顧問有限公司
VISION PLANNING CONSULTANTS LTD.

香港北角蠟殼街 9-23 號秀明中心 20 樓 C 室
Unit C, 20/F., Seabright Plaza, 9-23 Shell Street, North Point, Hong Kong.
Tel : (852) 2566 9988 Fax: (852) 2566 9978 E-mail: vision@visionplanning.com.hk

Figure 5

For indicative purpose only



Photo Plate No. 2

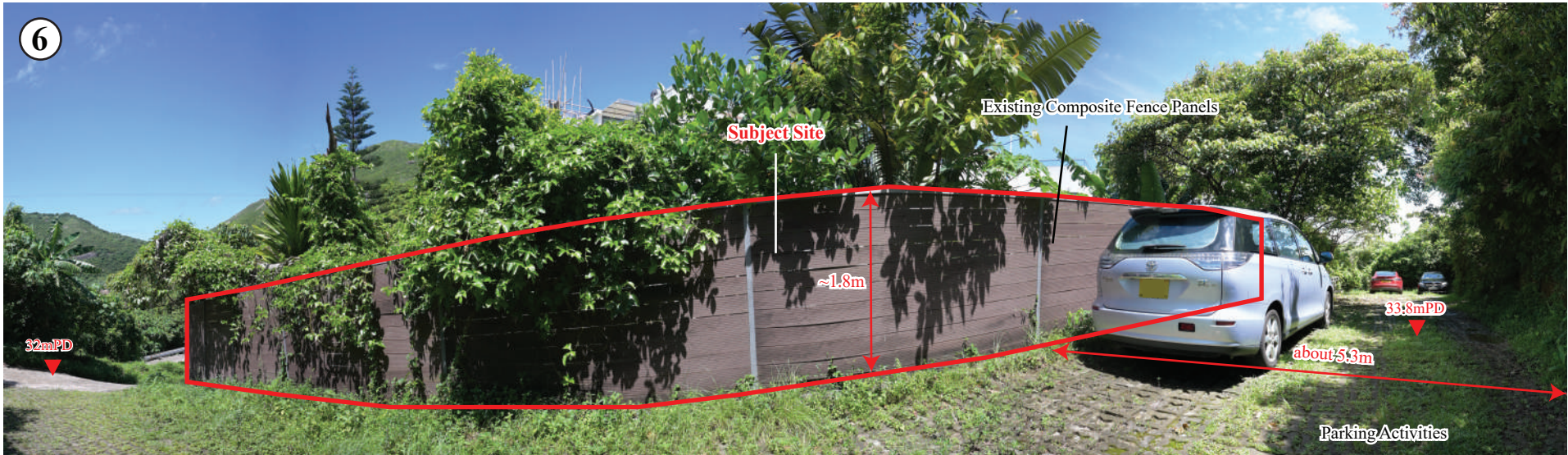
VISION

弘域城市規劃顧問有限公司
VISION PLANNING CONSULTANTS LTD.

香港北角銀禧街 9-23 號秀明中心 20 樓 C 室
Unit C, 20/F., Seablight Plaza, 9-23 Shell Street, North Point, Hong Kong.
Tel : (852) 2566 9988 Fax: (852) 2566 9978 E-mail: vision@visionplanning.com.hk

Figure 6

For indicative purpose only



Pedestrian Entrance of the Applicant's House

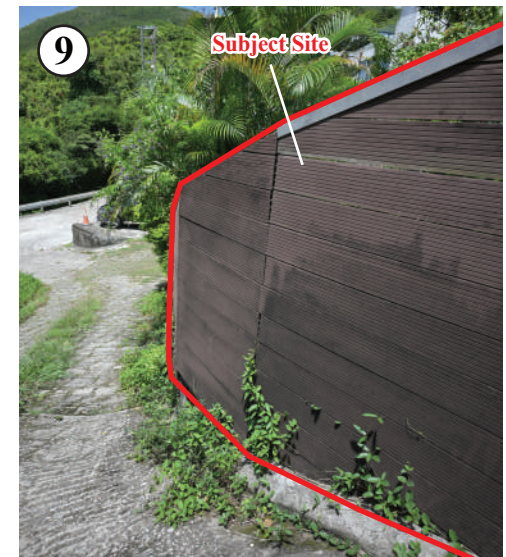


Photo Plate No. 3



弘域城市規劃顧問有限公司
 VISION PLANNING CONSULTANTS LTD.
 香港北角蠟燭街 9-23 號秀明中心 20 樓 C 室
 Unit C, 20/F., Seabright Plaza, 9-23 Shell Street, North Point, Hong Kong.
 Tel : (852) 2566 9988 Fax: (852) 2566 9978 E-mail: vision@visionplanning.com.hk

Figure 7

For indicative purpose only

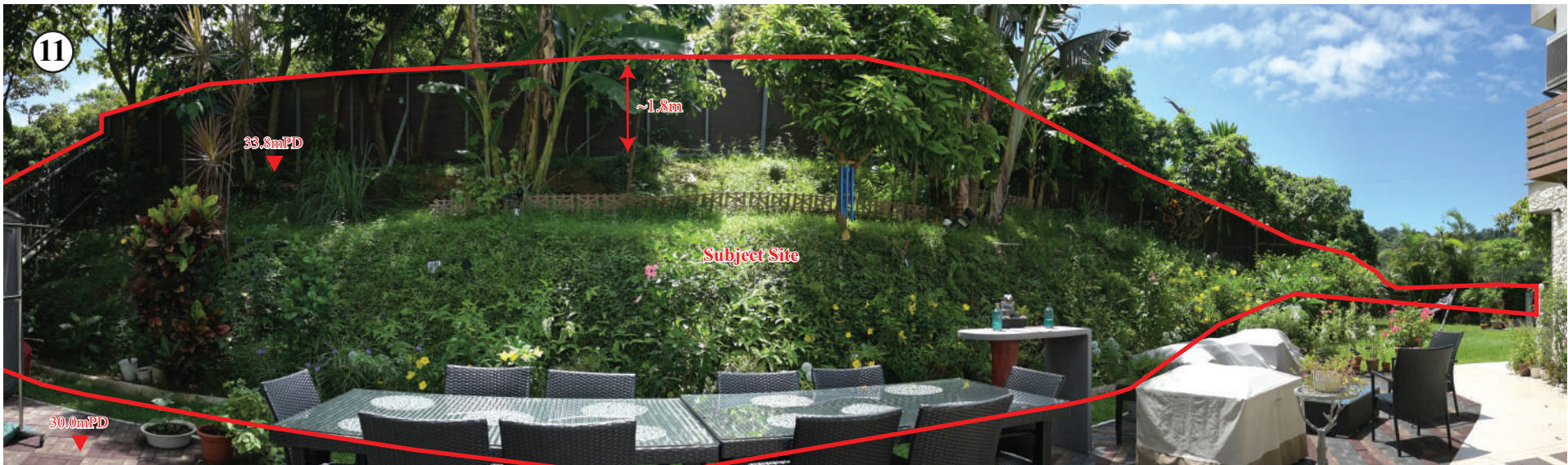
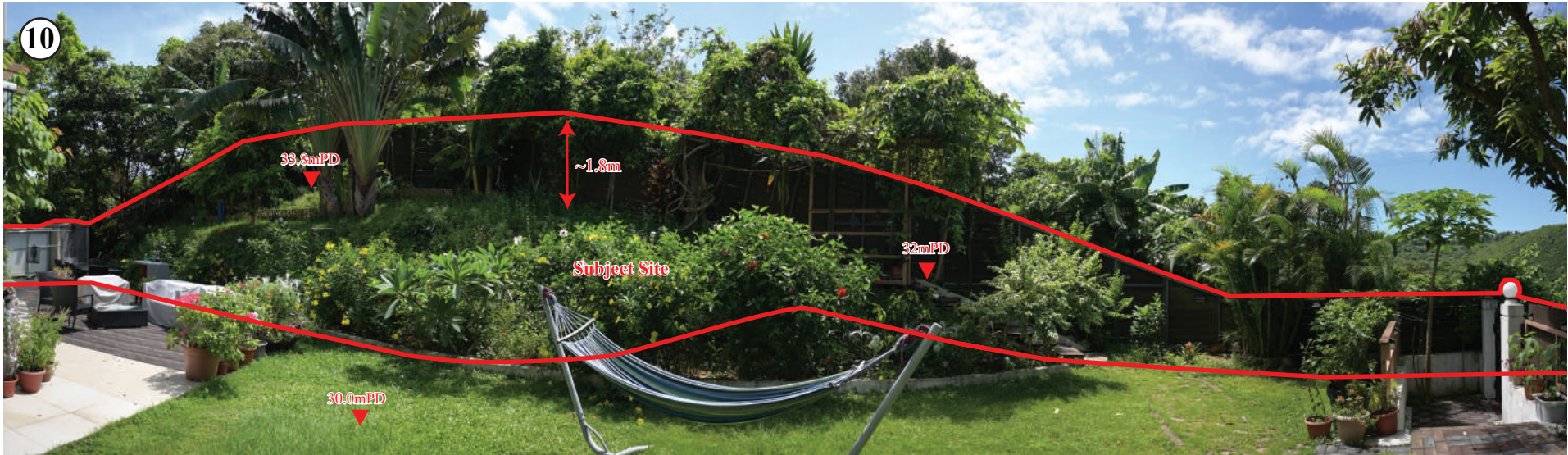


Photo Plate No. 4



弘域城市規劃顧問有限公司
 VISION PLANNING CONSULTANTS LTD.

香港北角蠟燭街 9-23 號秀明中心 20 樓 C 室
 Unit C, 20/F., Seablight Plaza, 9-23 Shell Street, North Point, Hong Kong.
 Tel : (852) 2566 9988 Fax: (852) 2566 9978 E-mail: vision@visionplanning.com.hk

Figure 8

For indicative purpose only



Photo Plate No. 5

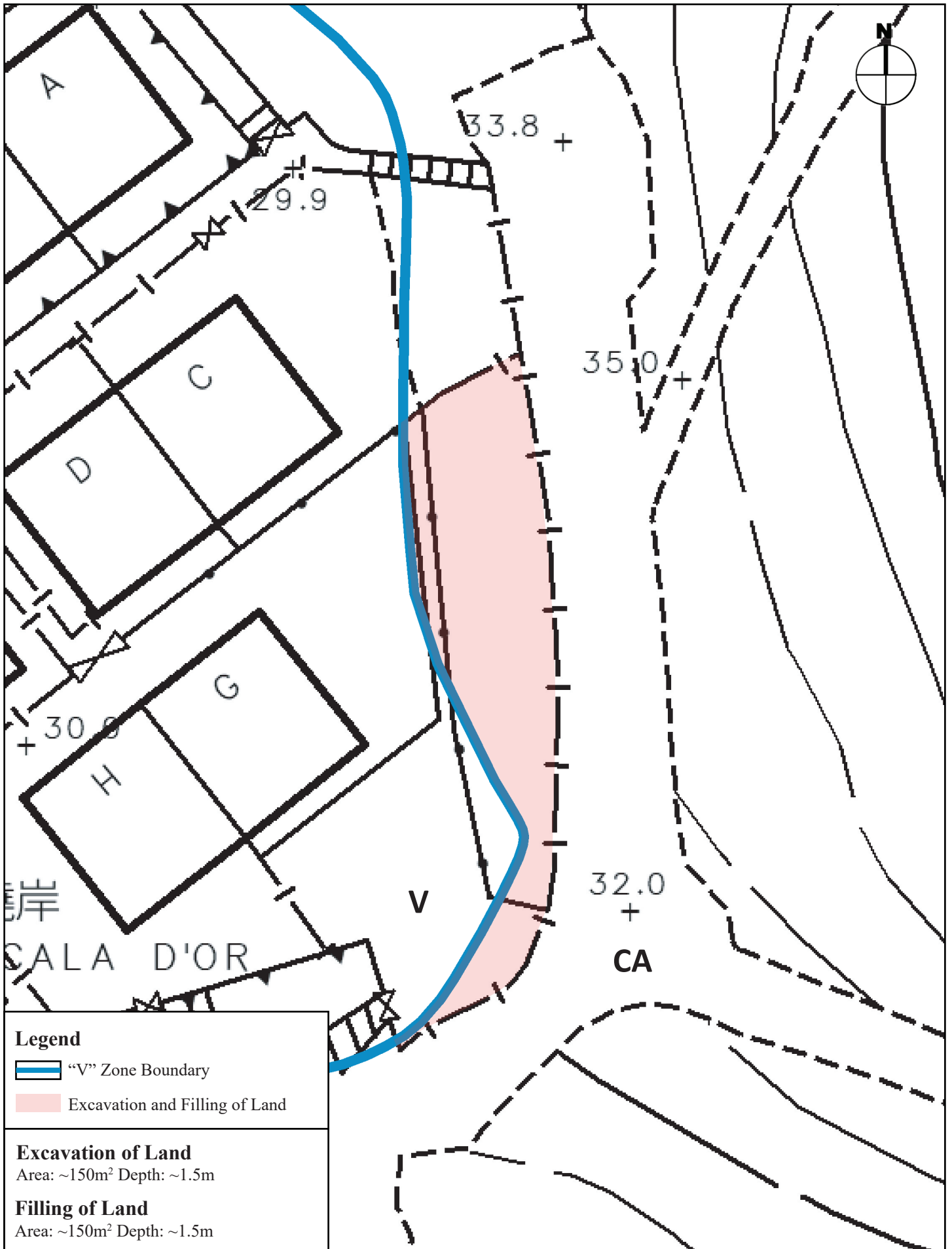


弘域城市規劃顧問有限公司
VISION PLANNING CONSULTANTS LTD.


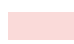
香港北角銀業街 9-23 號秀明中心 20 樓 C 室
Unit C, 20/F., Seablight Plaza, 9-23 Shell Street, North Point, Hong Kong.
Tel : (852) 2566 9988 Fax: (852) 2566 9978 E-mail: vision@visionplanning.com.hk

Figure 9

For indicative purpose only



Legend

-  "V" Zone Boundary
-  Excavation and Filling of Land

Excavation of Land
Area: ~150m² Depth: ~1.5m

Filling of Land
Area: ~150m² Depth: ~1.5m

Indicative Excavation and Filling of Land Plan
(Extracted from Government Survey Sheet No.:
12-SW-13A)

Figure 10

1: 250



弘域城市規劃顧問有限公司
VISION PLANNING CONSULTANTS LTD.

香港北角曉翠街 9-23 號秀明中心 20 樓 C 室
Unit C, 20/F., Seabright Plaza, 9-23 Shell Street, North Point, Hong Kong.
Tel : (852) 2566 9988 Fax: (852) 2566 9978 E-mail: vision@visionplanning.com.hk