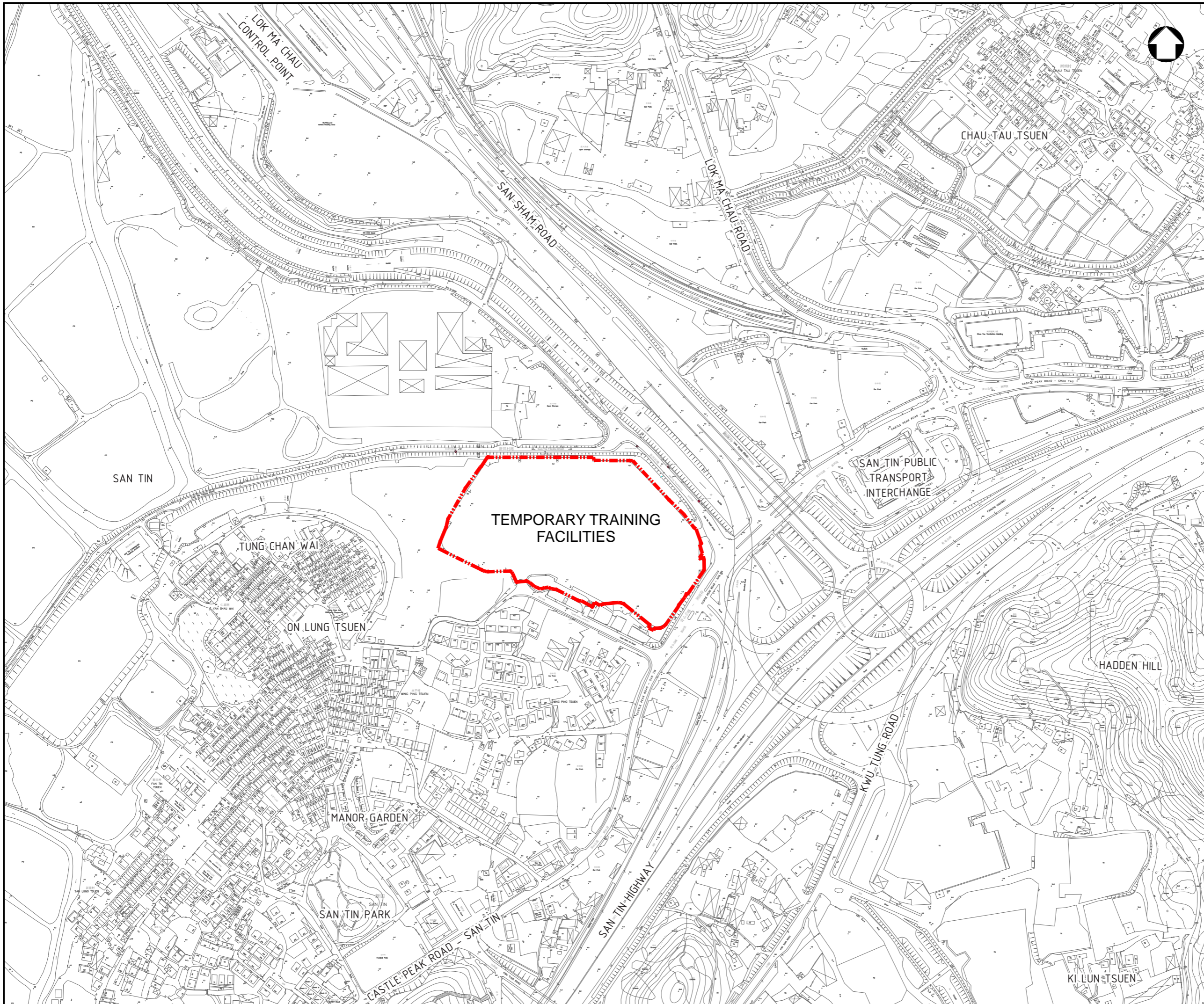


Figure 1

Location of the Application Site



KEY PLAN

LEGEND :

 APPLICATION SITE

Rev	Description	By	Date
Consultant			
Project title			
Drawing title			
Drawing no.		Rev.	
FIGURE 1		0	
Drawn	Date	Checked	Approved
CAD	JUL 2024		
Scale		Status	
1:2000@A1		FOR INFORMATION	

Consultant

Project title

Drawing title
**SAN TIN
 LOCATION PLAN OF
 APPLICATION SITE**

Drawn	Date	Checked	Approved
CAD	JUL 2024		
Scale		Status	
1:2000@A1		FOR INFORMATION	

© COPYRIGHT RESERVED



土木工程拓展署
 CIVIL ENGINEERING AND DEVELOPMENT
 DEPARTMENT
 北拓展處
 NORTH DEVELOPMENT OFFICE

Figure 2

Aerial Photo of the Site and the Surrounding Environment

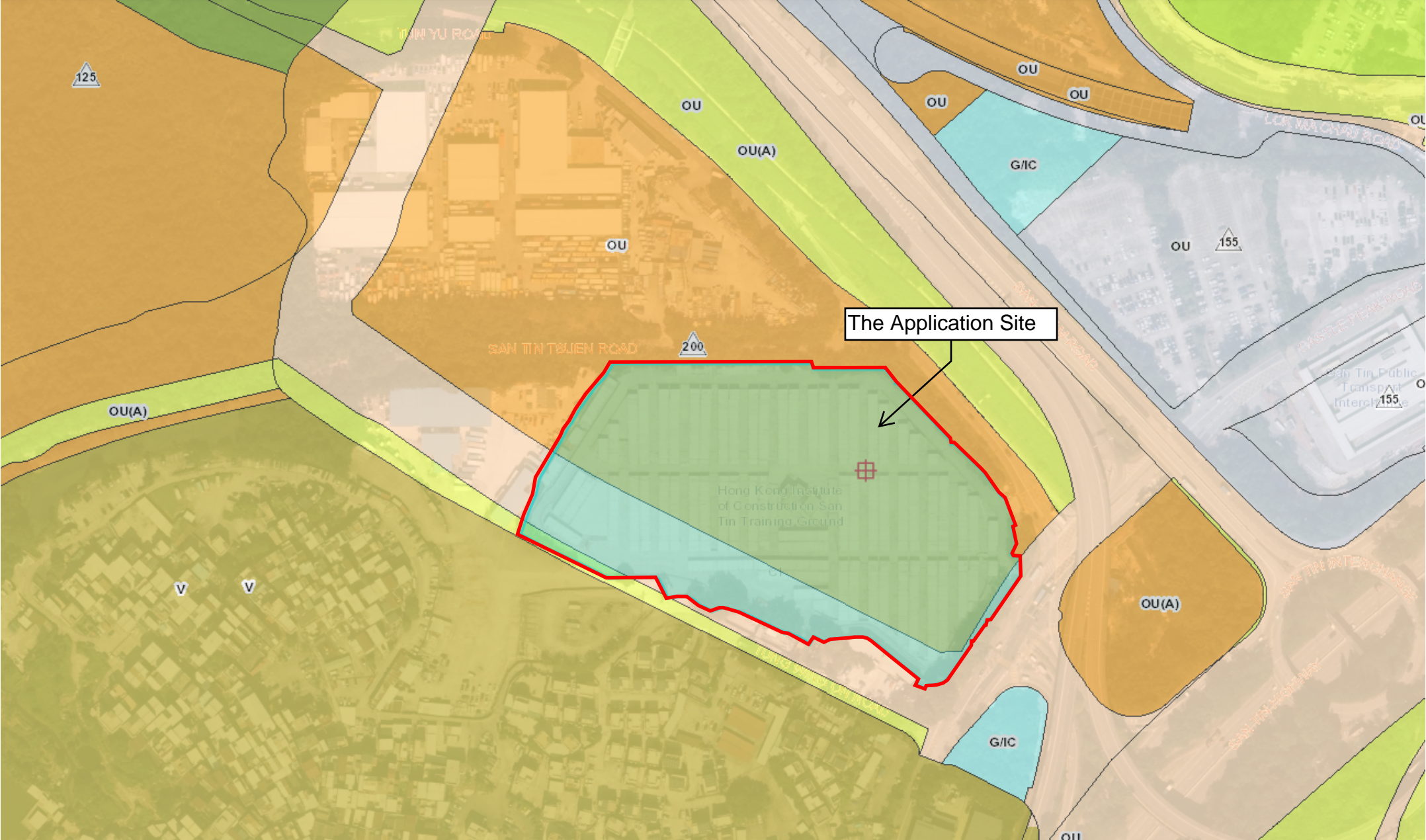
Figure 2 - Aerial Photo of the Application Site and the Surrounding Environment



Figure 3

Approved San Tin Technopole Outline
Zoning Plan No. S/STT/2

Figure 3 - The Application Site and Zonings on the Approved San Tin Technopole Outline Zoning Plan No. S/STT/2



Other Specified Use (Mixed Use)

Other Specified Use (Amenity Area)

Road

Figure 4

General Layout Plan



KEY PLAN

- LEGEND :**
- APPLICATION SITE
 - PROPOSED CLASSROOMS, STUDENT ACTIVITIES ROOMS, STAFF OFFICES
 - W(M)W(F)
S(M) S(F) TOILET FACILITIES AND CHANGING ROOM
 - G BUILDING SERVICES BUILDING AND FIRE SERVICES BUILDING
 - PARKING SPACES
 - LOADING /UNLOADING BAYS (FOR REFUSE COLLECTION VEHICLES)

Rev	Description	By	Date
Consultant			
Project Title			
Drawing Title			
SAN TIN GENERAL LAYOUT PLAN			
Drawing no. FIGURE 4		Rev.	
Drawn CAD	Date JUL 2024	Checked	Approved
Scale 1:500@A1	Status FOR INFORMATION		

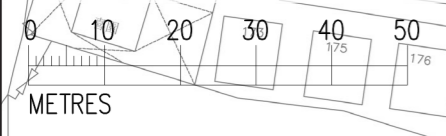
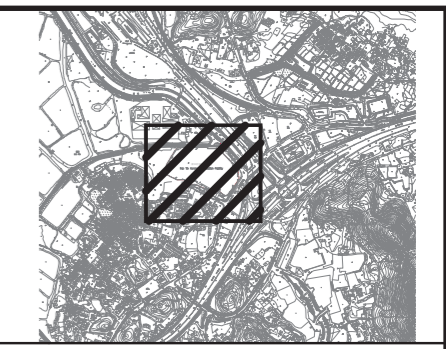


Figure 5

Landscape Master Plan



KEY PLAN

LEGEND :

- APPLICATION SITE
- PROPOSED FOOTPATH / EVA
- PROPOSED CLASSROOMS, STUDENT ACTIVITIES ROOMS, STAFF OFFICES
- EXISTING TOLIET FACILITIES, CHANGING ROOM, BUILDING SERVICES BUILDING AND FIRE SERVICES BUILDING TO BE PRESERVED
- EXISTING SITTING FACILITIES TO BE PRESERVED
- EXISTING TREE TO BE RETAINED
- EXISTING TPI TO BE RETAINED
- EXISTING VEGETATION TO BE RETAINED
- ▶ PROPOSED PEDESTRIAN ACCESS
- ▶ PROPOSED VECHICLAR ACCESS
- PARKING SPACES
- LOADING /UNLOADING BAYS (FOR REFUSE COLLECTION VEHICLES)

Rev	Description	By	Date

Consultant

Project Title

Drawing Title
**SAN TIN
 LANDSCAPE MASTER PLAN**

Drawing no. FIGURE 5		Rev.	
Drawn CAD	Date JUL 2024	Checked	Approved
Scale 1:500@A1	Status FOR INFORMATION		

© COPYRIGHT RESERVED

土木工程拓展署
 CIVIL ENGINEERING AND DEVELOPMENT
 DEPARTMENT
 北拓展處
 NORTH DEVELOPMENT OFFICE

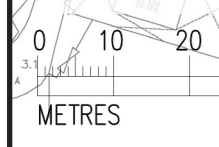


Figure 6

Plan for Open Space

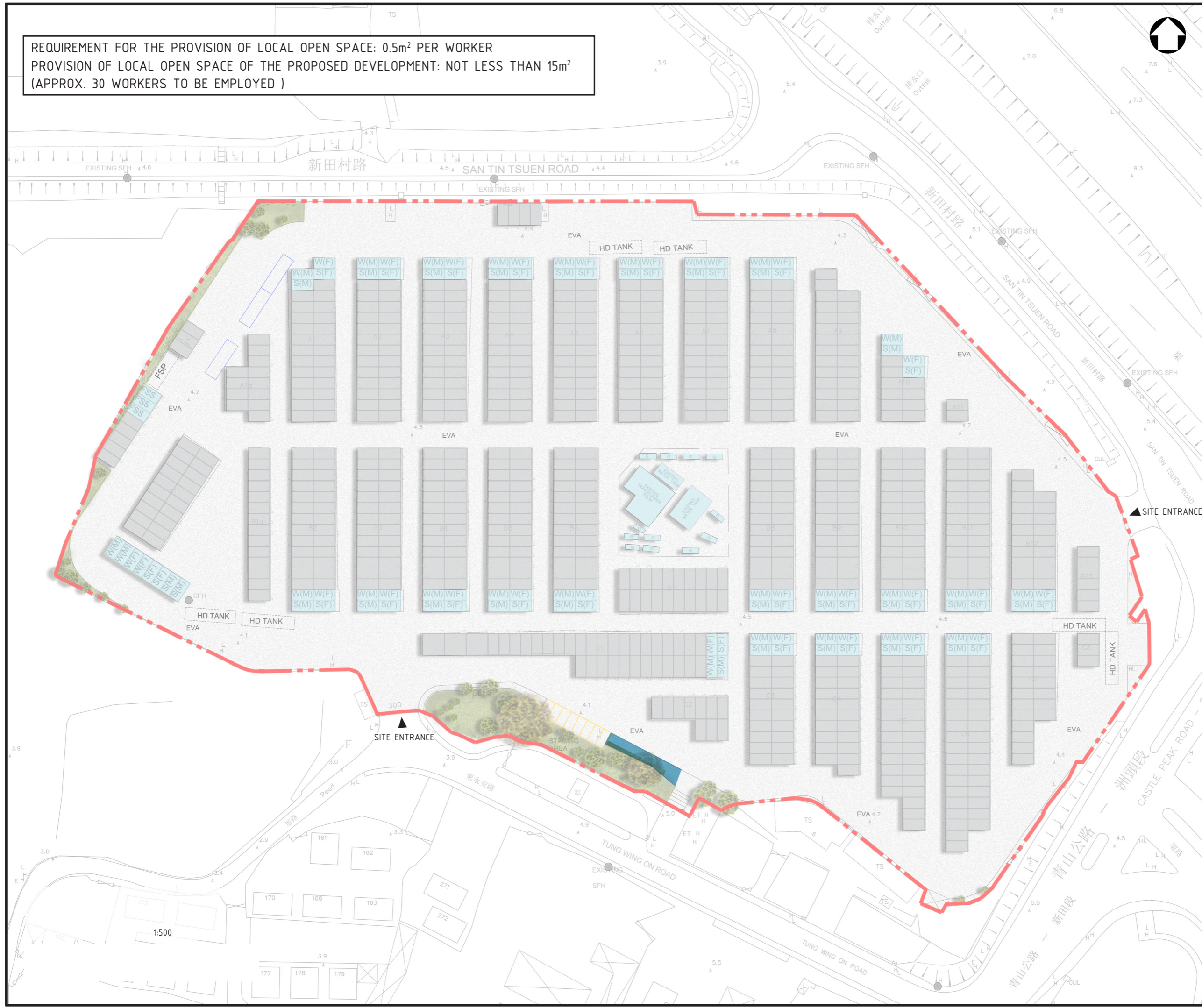
REQUIREMENT FOR THE PROVISION OF LOCAL OPEN SPACE: 0.5m² PER WORKER
 PROVISION OF LOCAL OPEN SPACE OF THE PROPOSED DEVELOPMENT: NOT LESS THAN 15m²
 (APPROX. 30 WORKERS TO BE EMPLOYED)



KEY PLAN

LEGEND :

- APPLICATION SITE
- LOCAL OPEN SPACE



Rev	Description	By	Date
Consultant			
Project Title			
Drawing Title			
SAN TIN PROVISION OF LOCAL OPEN SPACE			
Drawing no. FIGURE 6		Rev.	
Drawn CAD	Date JUL 2024	Checked	Approved
Scale 1:500@A1	Status FOR INFORMATION		

© COPYRIGHT RESERVED

土木工程拓展署
 CIVIL ENGINEERING AND DEVELOPMENT
 DEPARTMENT
 北拓展處
 NORTH DEVELOPMENT OFFICE

Figure 7

Block Plan

Block Plan

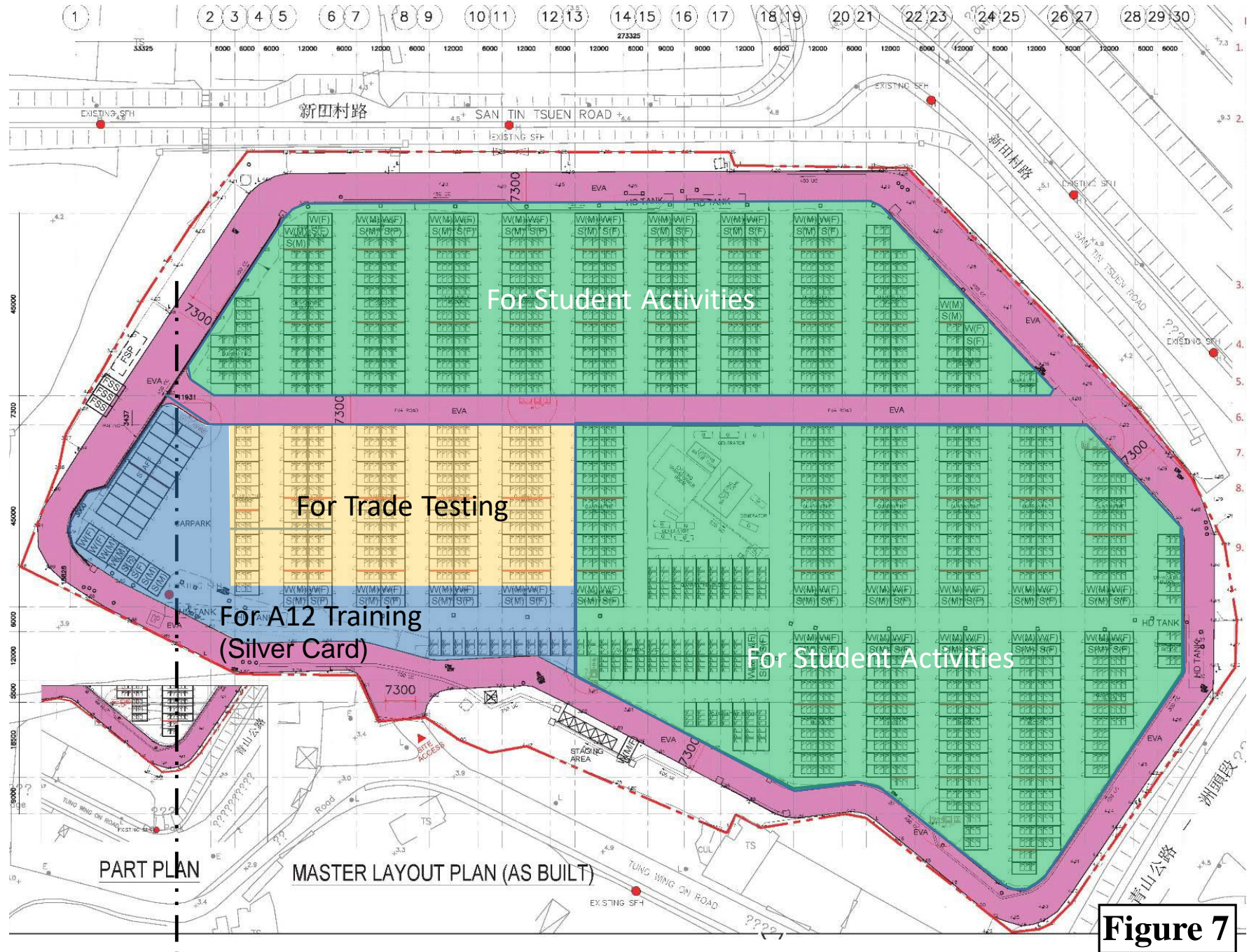


Figure 7

Figure 8

Ingress and Egress Routing for Development Traffic



- LEGEND :
- SITE BOUNDARY
 - ▶ INGRESS ROUTES
 - ▶ EGRESS ROUTES

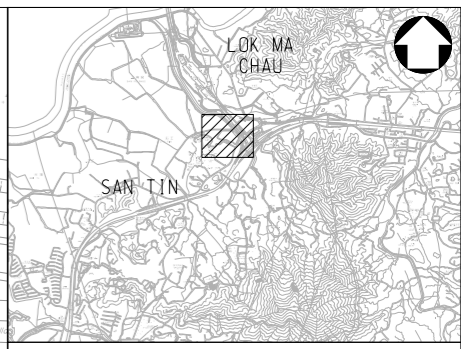
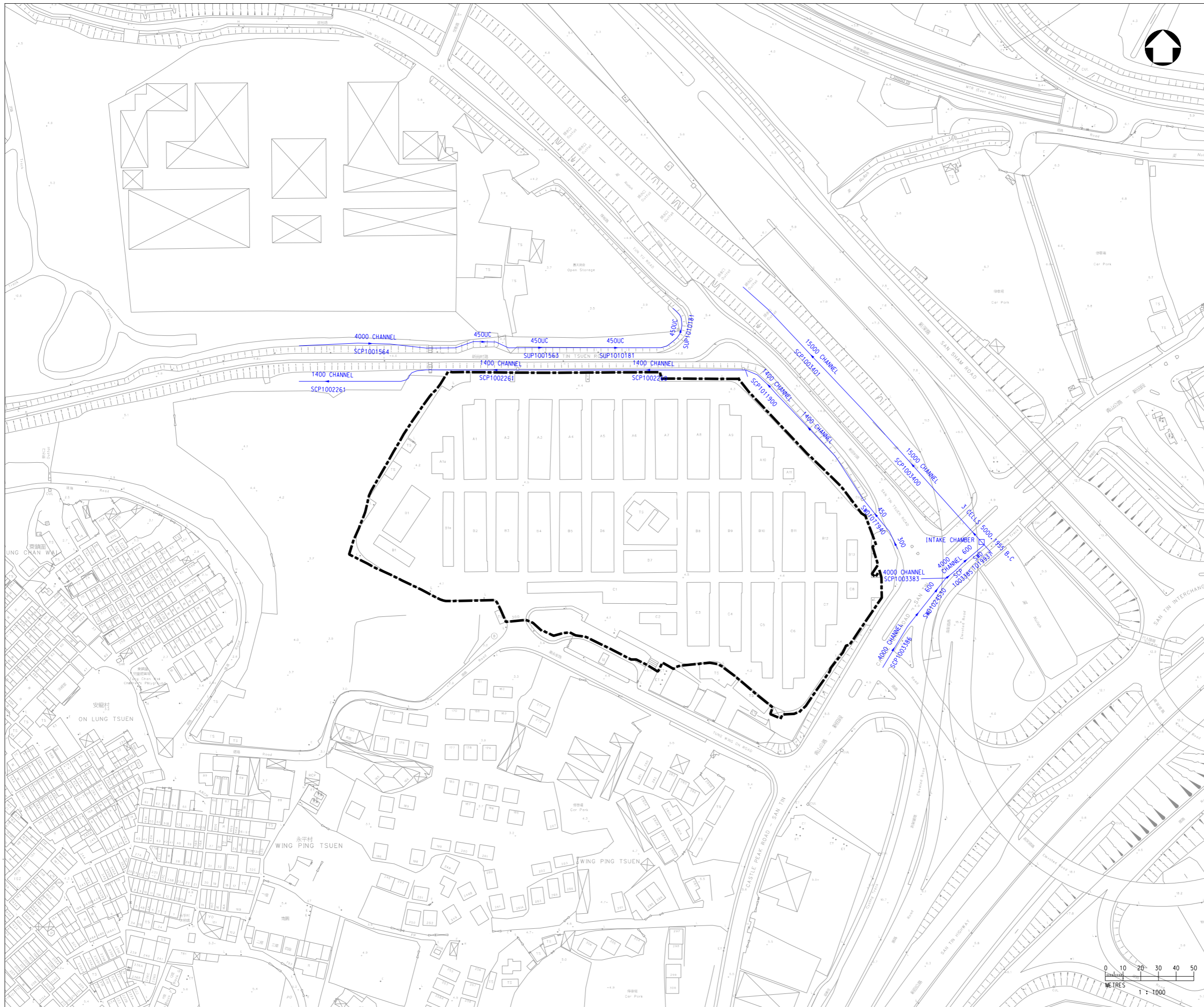
Rev	Description	By	Date
Consultant			
Project title			
Drawing title			
SAN TIN INGRESS AND EGRESS ROUTINGS FOR DEVELOPMENT TRAFFIC			
Drawing no.		Rev.	
FIGURE 8		—	
Drawn	Date	Checked	Approved
CAD	JUL		
Scale		Status	
1:2000 (A1)		—	

© COPYRIGHT RESERVED

土木工程拓展署
CIVIL ENGINEERING AND DEVELOPMENT
DEPARTMENT
北拓展處
NORTH DEVELOPMENT OFFICE

Figure 9

Existing Drainage Layout Plan



KEY PLAN

LEGEND :

- SITE BOUNDARY OF PLANNED DEVELOPMENT
- EXISTING STORMWATER DRAINS

Rev	Description	By	Date
Consultant			
Project title			
Drawing title			
SAN TIN EXISTING DRAINAGE LAYOUT PLAN			
Drawing no.		Rev.	
FIGURE 9		-	
Drawn	Date	Checked	Approved
CAD	JUL		
Scale	Status		
1:1000 (A1)			

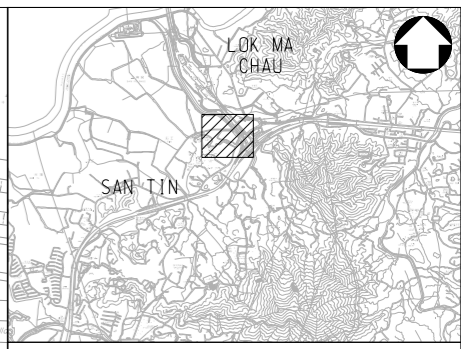
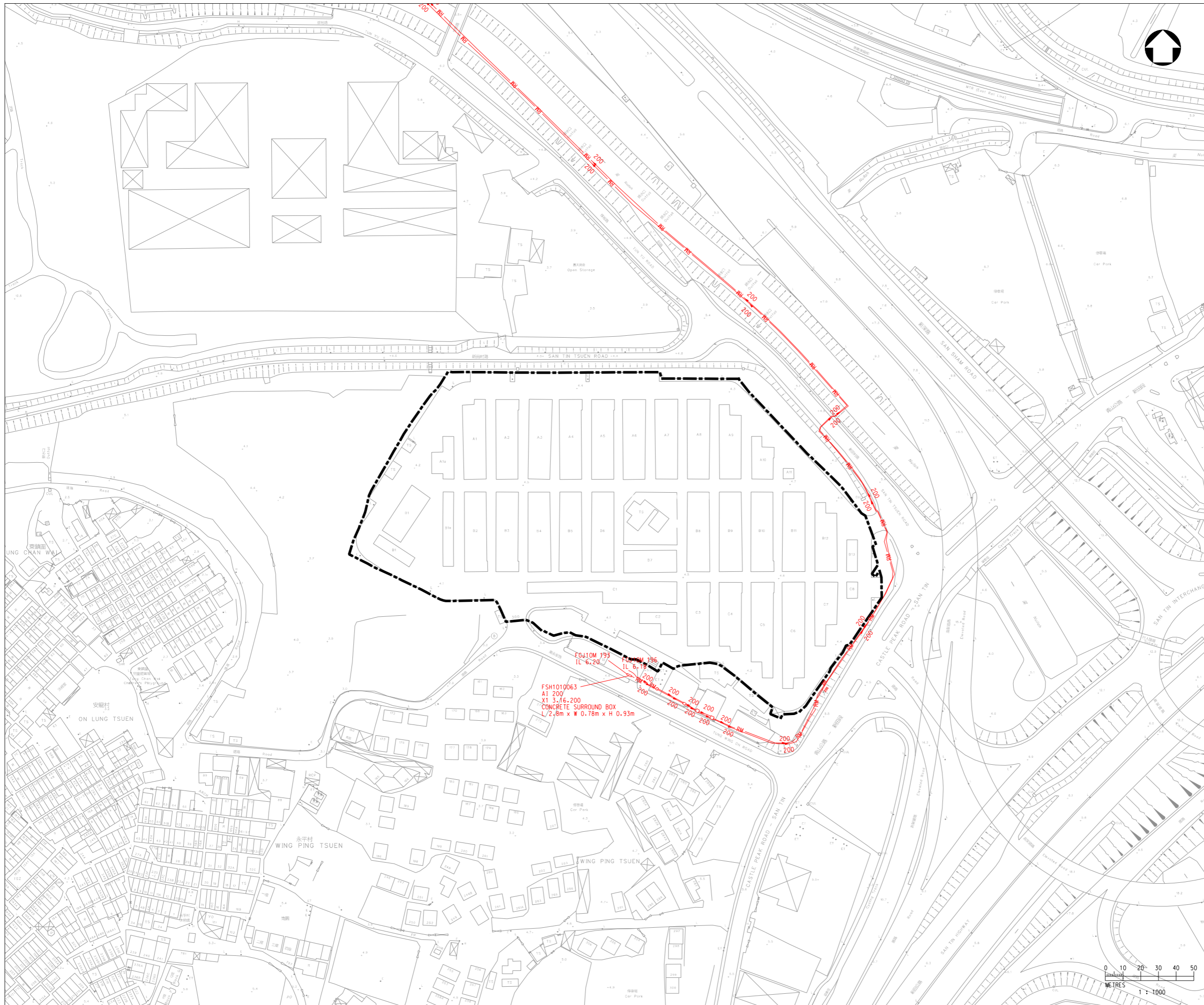
© COPYRIGHT RESERVED



土木工程拓展署
 CIVIL ENGINEERING AND DEVELOPMENT
 DEPARTMENT
 北拓展處
 NORTH DEVELOPMENT OFFICE

Figure 10

Existing Sewerage Layout Plan



KEY PLAN

LEGEND :

- SITE BOUNDARY OF PLANNED DEVELOPMENT
- EXISTING SEWERAGE

Rev	Description	By	Date
Consultant			
Project title			
Drawing title			
SAN TIN EXISTING SEWERAGE LAYOUT PLAN			
Drawing no.		Rev.	
FIGURE 10		-	
Drawn	Date	Checked	Approved
CAD	JUL		
Scale	Status		
1:1000 (A1)			

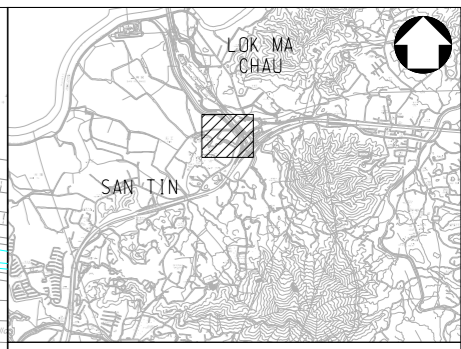
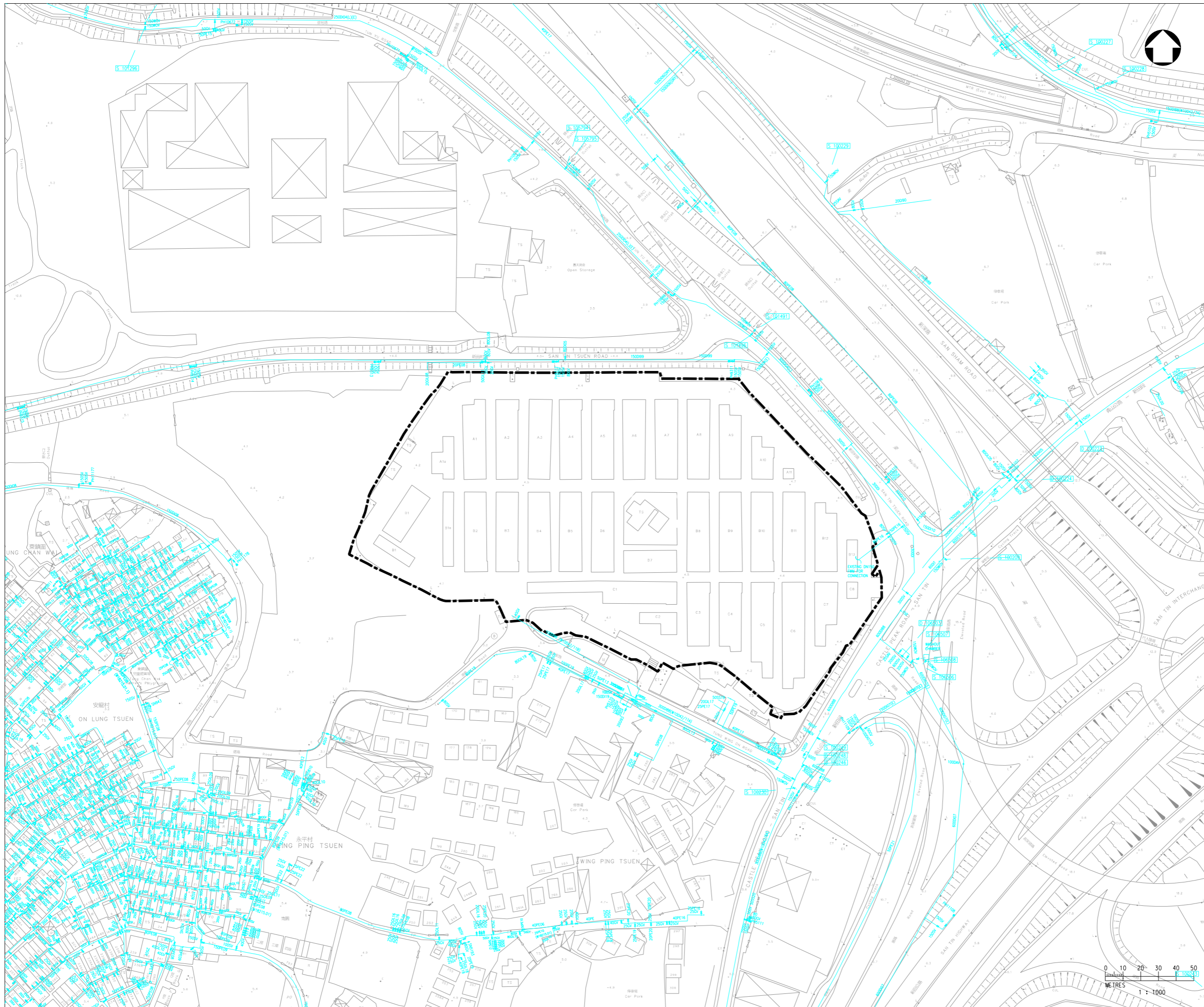
© COPYRIGHT RESERVED

土木工程拓展署
 CIVIL ENGINEERING AND DEVELOPMENT
 DEPARTMENT
 北拓展處
 NORTH DEVELOPMENT OFFICE



Figure 11

Existing Waterworks Layout Plan



KEY PLAN

LEGEND :

- SITE BOUNDARY OF PLANNED DEVELOPMENT
- EXISTING FRESH WATER MAIN

Rev	Description	By	Date
Consultant			
Project title			
Drawing title			
SAN TIN EXISTING WATERWORK LAYOUT PLAN			
Drawing no.		Rev.	
FIGURE 11		-	
Drawn	Date	Checked	Approved
CAD	JUL		
Scale	Status		
1:1000 (A1)			

© COPYRIGHT RESERVED

土木工程拓展署
 CIVIL ENGINEERING AND DEVELOPMENT
 DEPARTMENT
 北拓展處
 NORTH DEVELOPMENT OFFICE

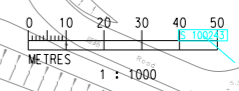
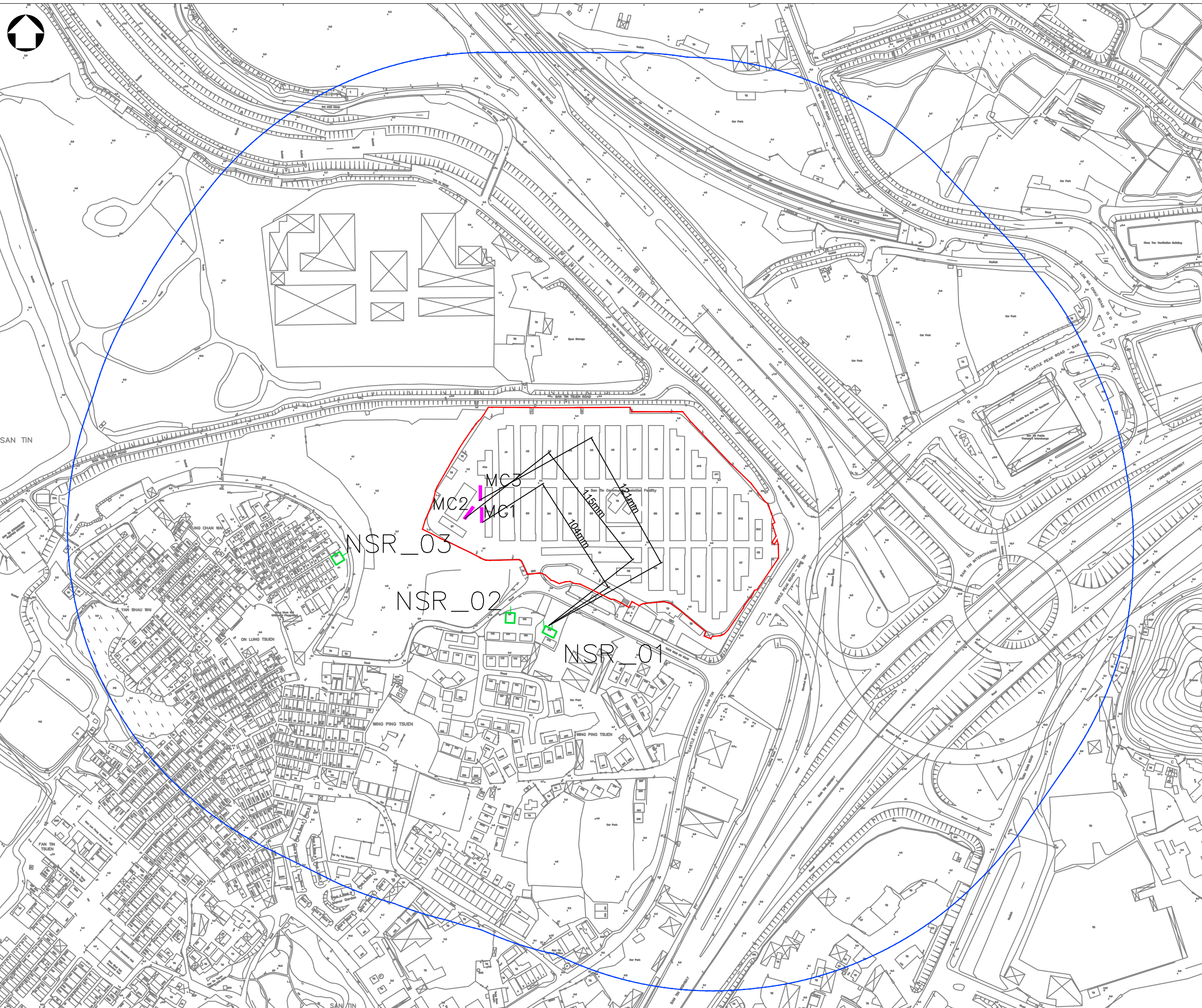


Figure 12a to 12c

Location of Fixed Noise Source



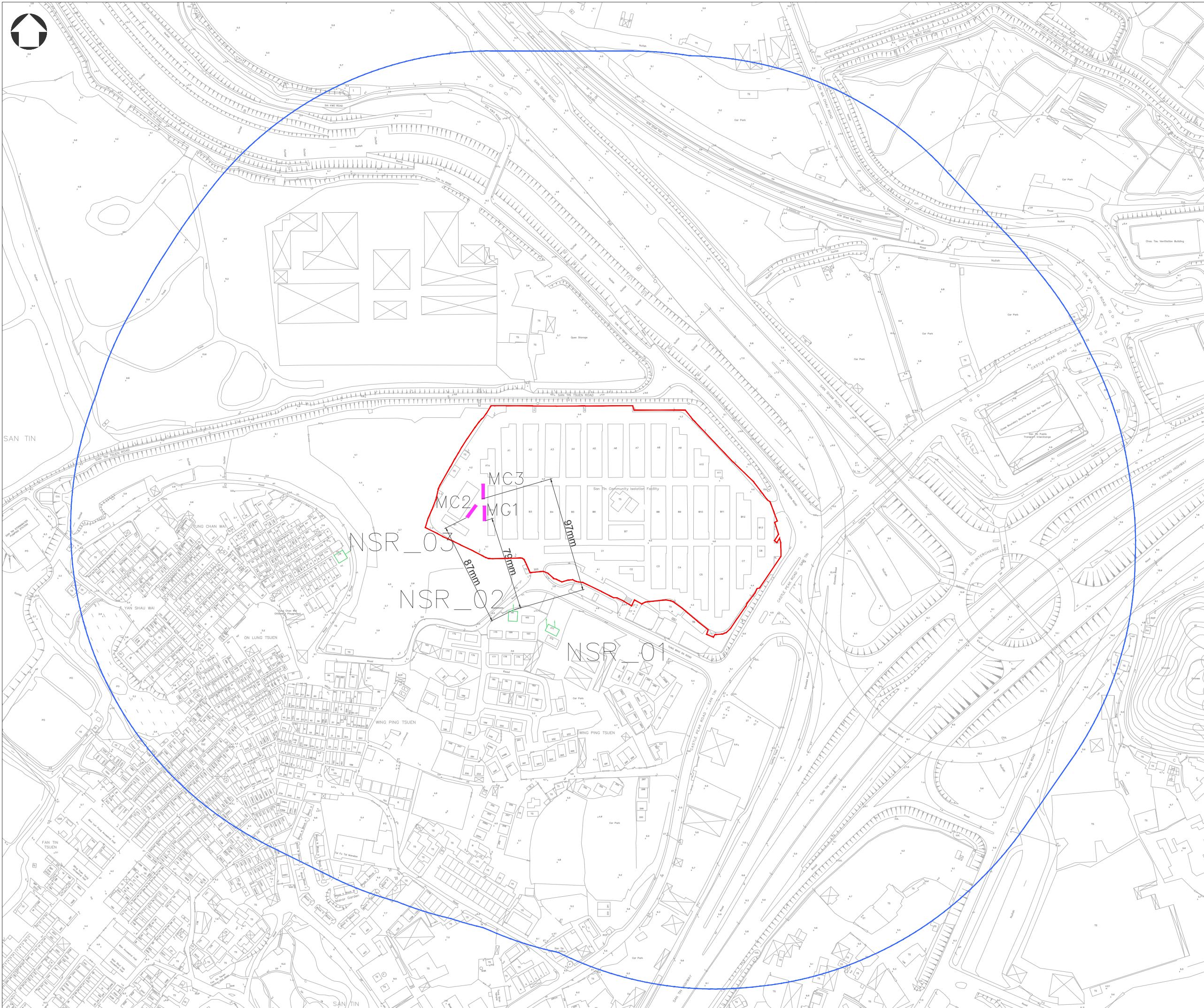
- LEGEND :
- PROJECT SITE BOUNDARY
 - 300M NOISE ASSESSMENT AREA
 - REPRESENTATIVE NAPs
 - ▭ MACHINERY

Rev	Description	By	Date
Consultant			
Project title			
Drawing title LOCATIONS OF REPRESENTATIVE FIXED NOISE SOURCES (PLANNED) AND DISTANCE TO REPRESENTATIVE NAPs			
Drawing no. FIGURE 12a		Rev.	
Drawn	Date JUL 2024	Checked	Approved
Scale 1:3000@A3		Status	

© COPYRIGHT RESERVED



土木工程拓展署
CIVIL ENGINEERING AND DEVELOPMENT DEPARTMENT
北拓展處
NORTH DEVELOPMENT OFFICE



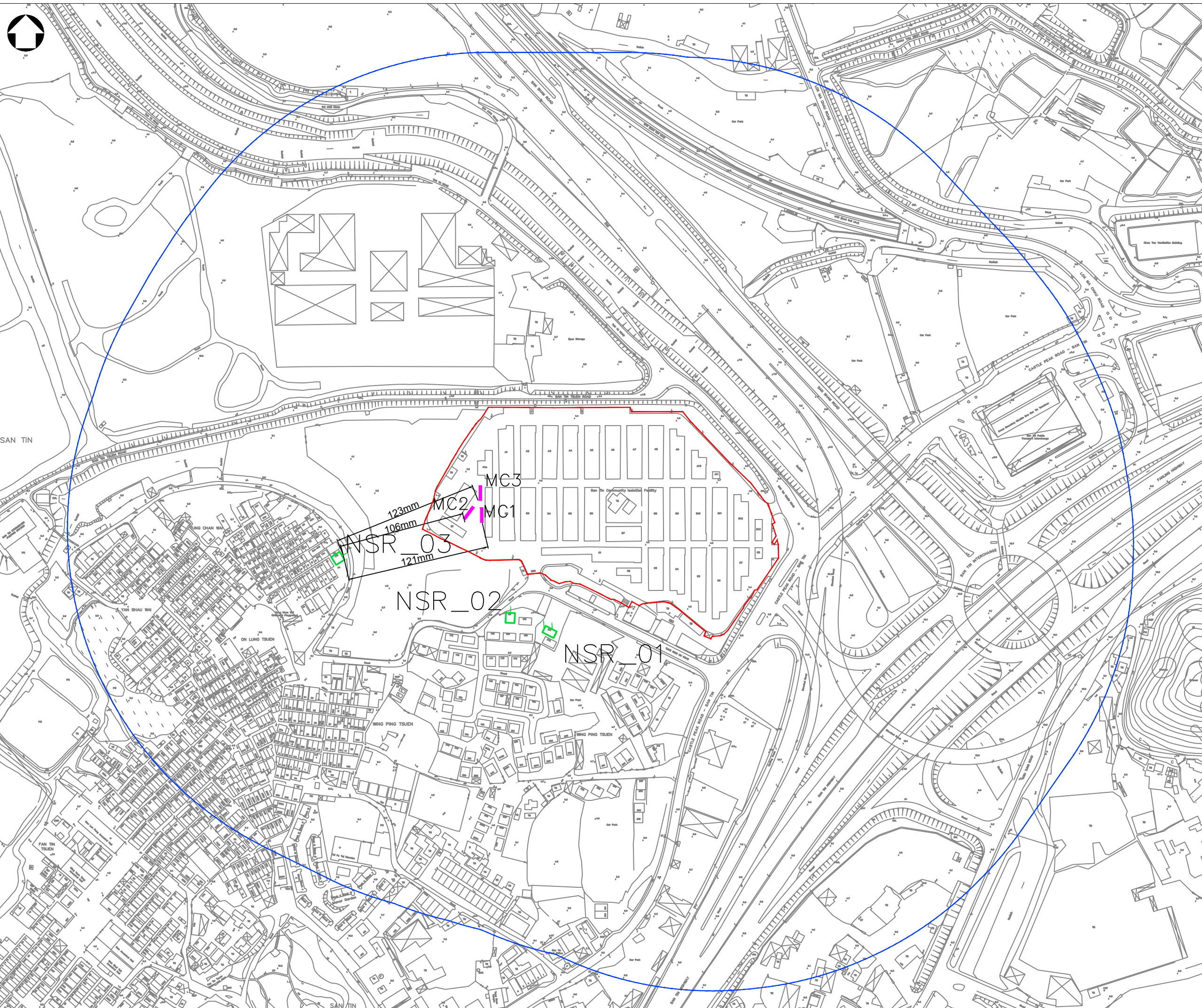
- LEGEND :
- PROJECT SITE BOUNDARY
 - 300M NOISE ASSESSMENT AREA
 - REPRESENTATIVE NAPs
 - MACHINERY

Rev	Description	By	Date
Consultant			
Project title			
Drawing title LOCATIONS OF REPRESENTATIVE FIXED NOISE SOURCES (PLANNED) AND DISTANCE TO REPRESENTATIVE NAPs			
Drawing no. FIGURE 12b		Rev.	
Drawn	Date JUL 2024	Checked	Approved
Scale 1:3000@A3	Status		

© COPYRIGHT RESERVED



土木工程拓展署
CIVIL ENGINEERING AND DEVELOPMENT DEPARTMENT
北拓展處
NORTH DEVELOPMENT OFFICE



- LEGEND :
- PROJECT SITE BOUNDARY
 - 300M NOISE ASSESSMENT AREA
 - REPRESENTATIVE NAPs
 - MACHINERY

Rev	Description	By	Date
Consultant			
Project title			
Drawing title LOCATIONS OF REPRESENTATIVE FIXED NOISE SOURCES (PLANNED) AND DISTANCE TO REPRESENTATIVE NAPs			
Drawing no. FIGURE 12c		Rev.	
Drawn	Date JUL 2024	Checked	Approved
Scale 1:3000@A3		Status	

© COPYRIGHT RESERVED