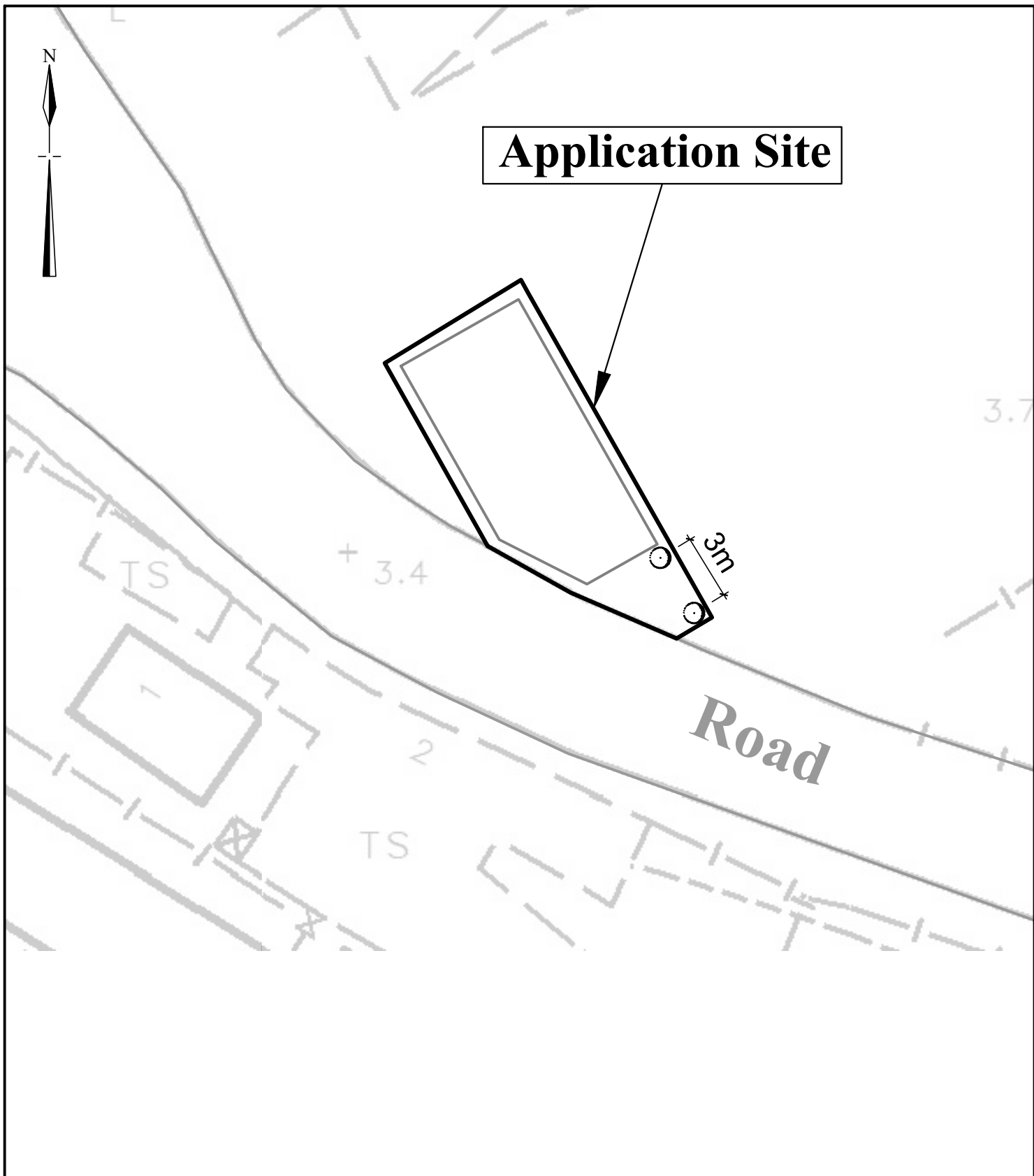


Site Area(about) : 116m²

No.	Uses	Covered Area (about)	Floor Area (about)	No. of Storeys	Height
1	Shop and Service	80 m ²	160 m ²	2	7m
Total		80 m ²	160 m ²		

1:250	Layout Plan	Goldrich Planners & Surveyors Ltd.
January 2025		Lot 271 S.A ss1(part) in D.D. 385 Tuen Mun, N.T.
		Plan 3 (P 24041)



Species	Spacing (Centre to Centre)	Min. Size (Height)	Quantity
Proposed Bauhinia blakeana (洋紫荊)	3m	2.75m	2
Total	-	-	2

1:250	Landscape Proposal	Goldrich Planners & Surveyors Ltd.
March 2025		Plan 5 (P 24041)

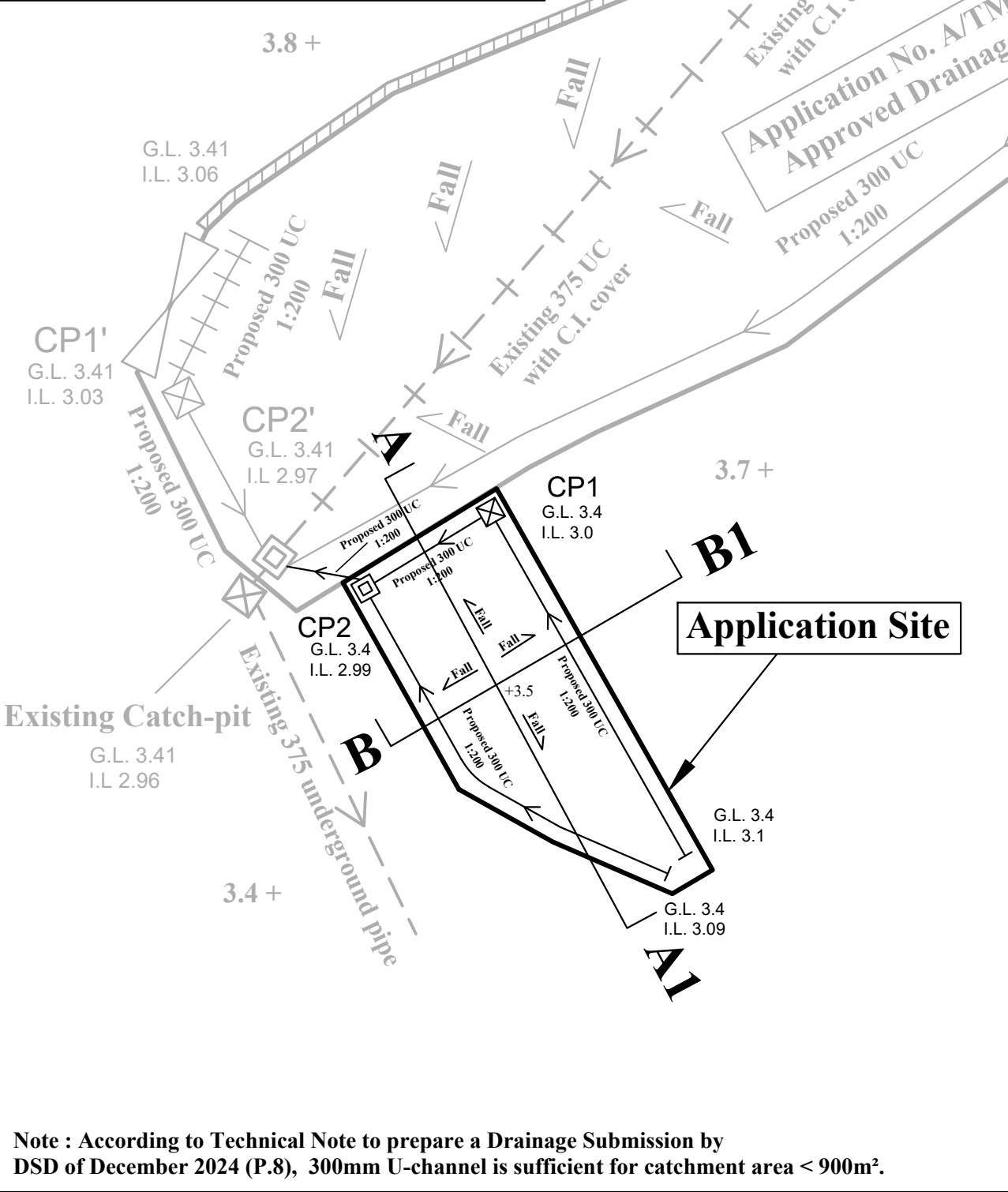
Lot 271 S.A ss1(part) in D.D. 385
Tuen Mun, N.T.

Scope of Drainage Proposal

At the western and southern side of the site, the ground level of the track is lower than the site. No surface run-off will flow from the west and south to the site.

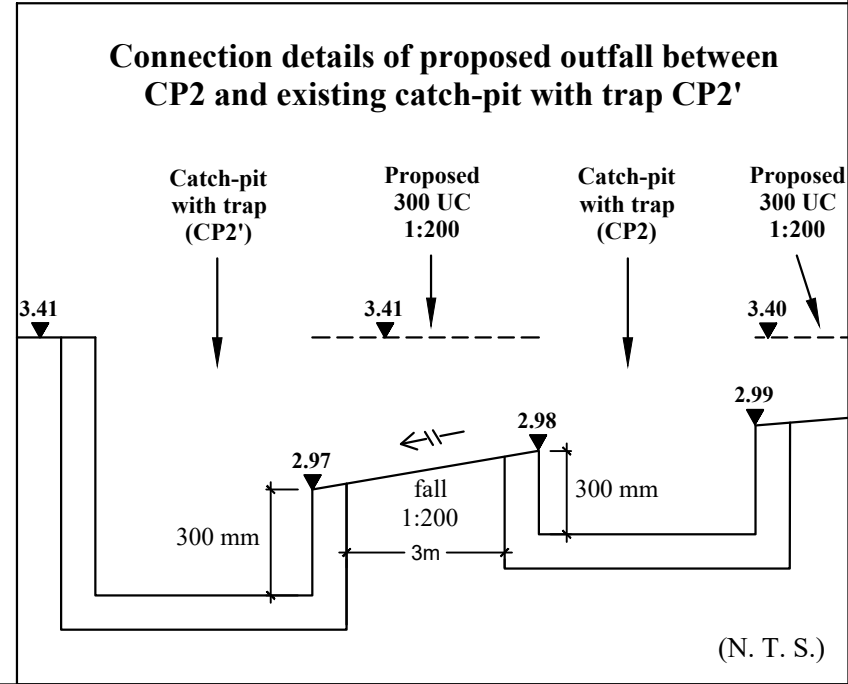
At the northern side of the site, there is an approved planning application No. A/TM-SKW/125 with approved drainage proposal. No surface run-off will flow from the north to the site.

At the eastern side of the site, most of the surface run-off flows to the local track at the south. Only a little surface run-off will flow from the east to the site.

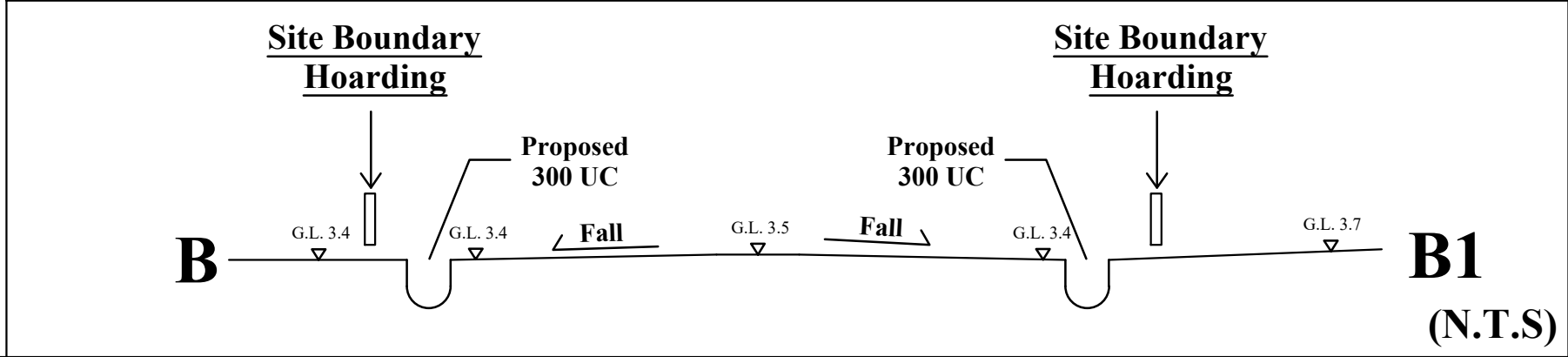
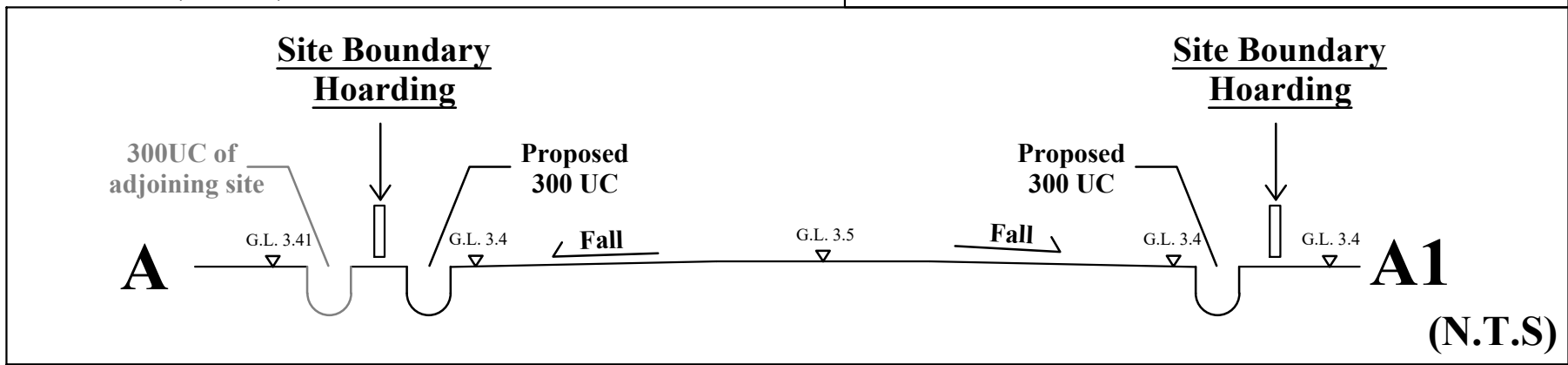


Legend

- Proposed Catch-pit
- Proposed Catch-pit with trap
- Proposed U-Channel
- Vehicular Ingress / Egress



Site Area(about) : 116m²



Note : According to Technical Note to prepare a Drainage Submission by DSD of December 2024 (P.8), 300mm U-channel is sufficient for catchment area < 900m².

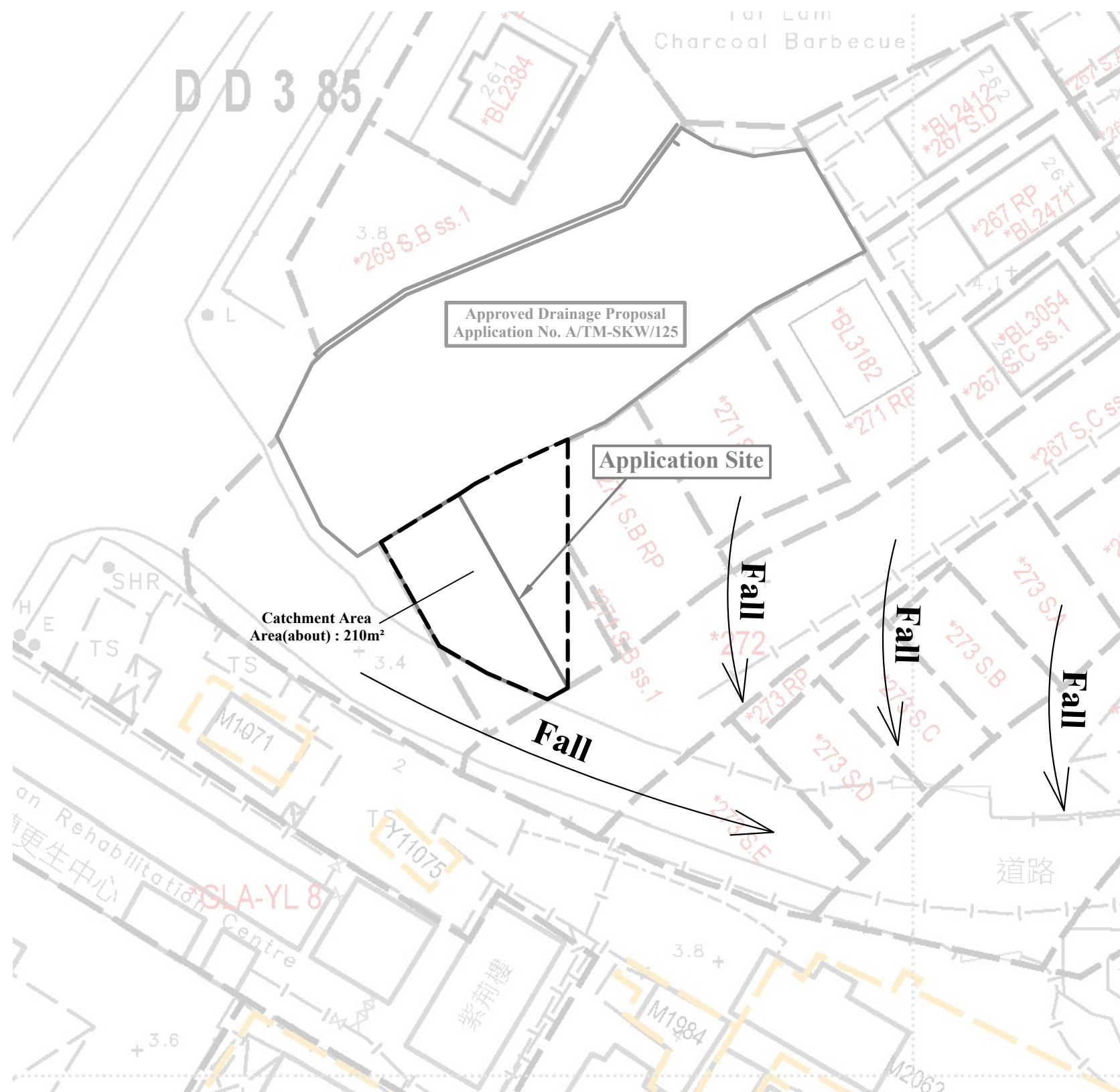
1:250 (A3)
March 2024

Drainage Proposal

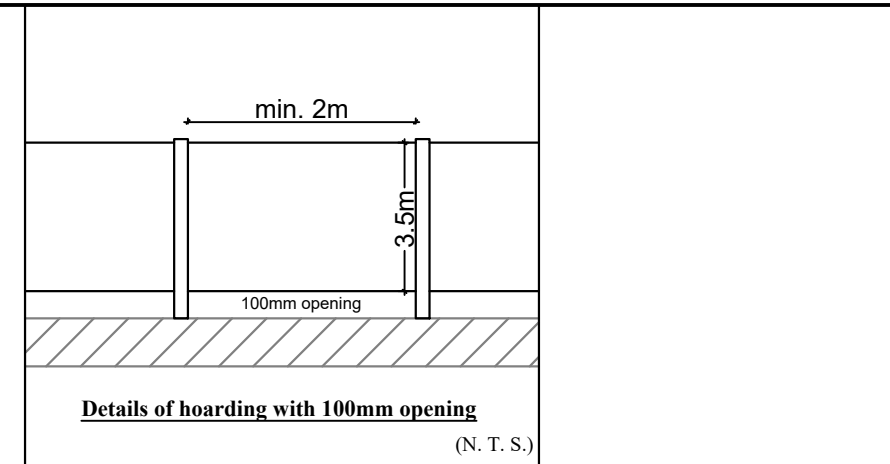
Lot 271 S.A ss1(part) in D.D. 385
Tuen Mun, N.T.

Goldrich Planners & Surveyors Ltd.

Plan 6.1
(P 24041)

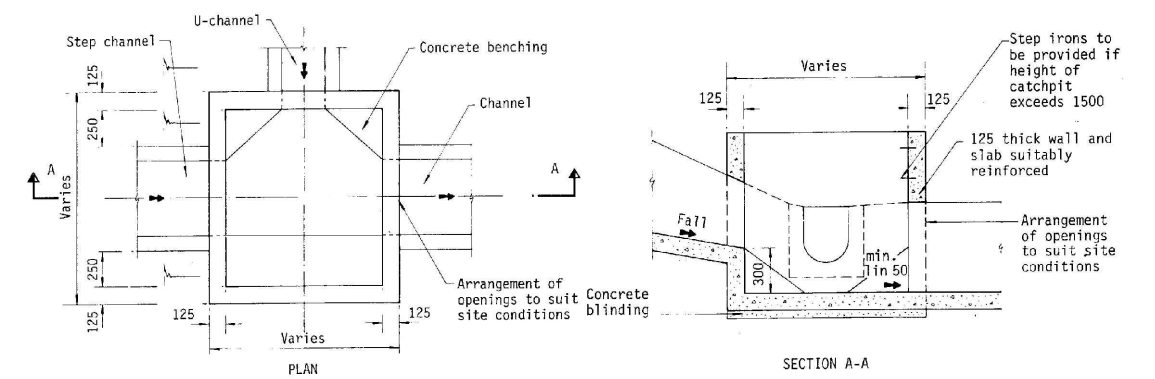


**AREA OF CATCHMENT
(N.T.S)**

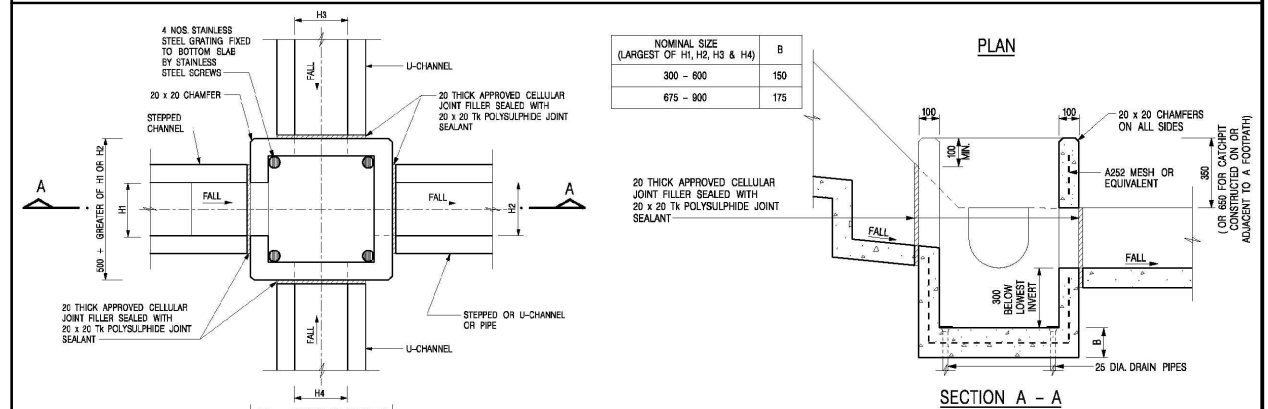


Details of hoarding with 100mm opening

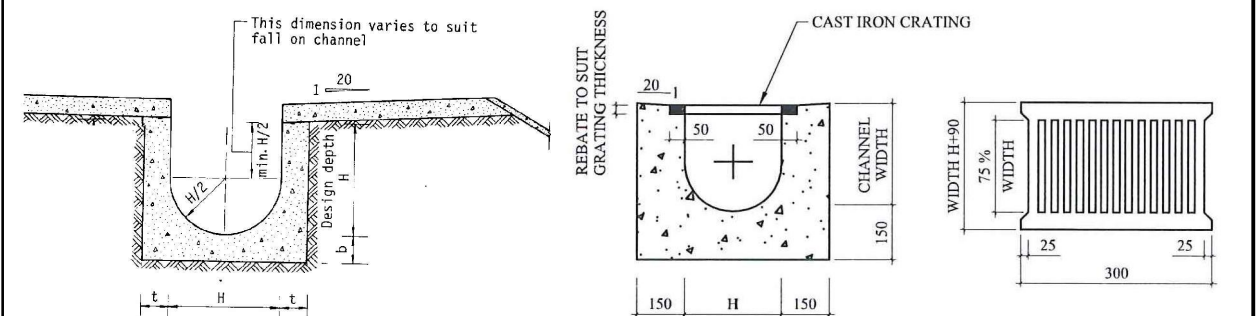
(N. T. S.)



TYPICAL DETAILS OF CATCHPIT



**DETAILS OF CATCHPIT WITH TRAP
(REFER TO CEDD'S STANDARD DWG. C2406/1)**



TYPICAL DETAILS OF U CHANNEL

**TYPICAL SECTION OF U-CHANNEL WITH COVER
(N.T.S.)**

**CAST IRON CRATING
(HEAVY DUTY)**

N.T.S

March 2025

Drainage Proposal

Lot 271 S.A ss1(part) in D.D. 385
Tuen Mun, N.T.

Goldrich Planners &
Surveyors Ltd.

Plan 6.2
(P 24041)