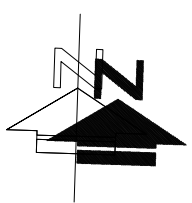
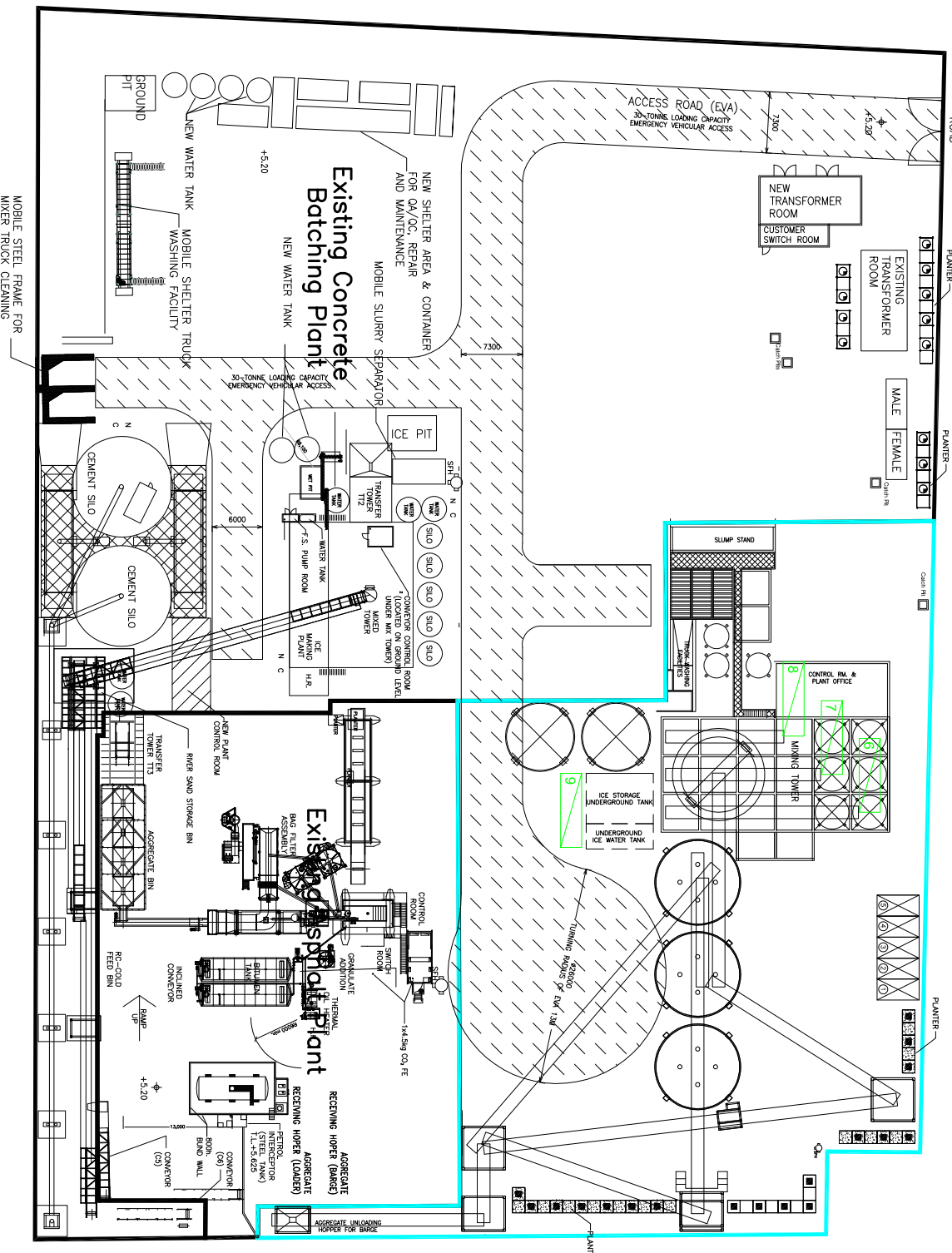


Appendix I
Schematic Drawings



LEGEND:





	SUBJECT SITE BOUNDARY OF PROPOSED CONCRETE BATCHING PLANT
	INTERNAL ACCESS ROAD
	PARKING SPACE
	LOADING / UNLOADING SPACE

FIGURE NO.: **2.1**

PROJECT TITLE: **Concrete Batching Plant at Tsing Yi - Renewal Application AT/Y/139**

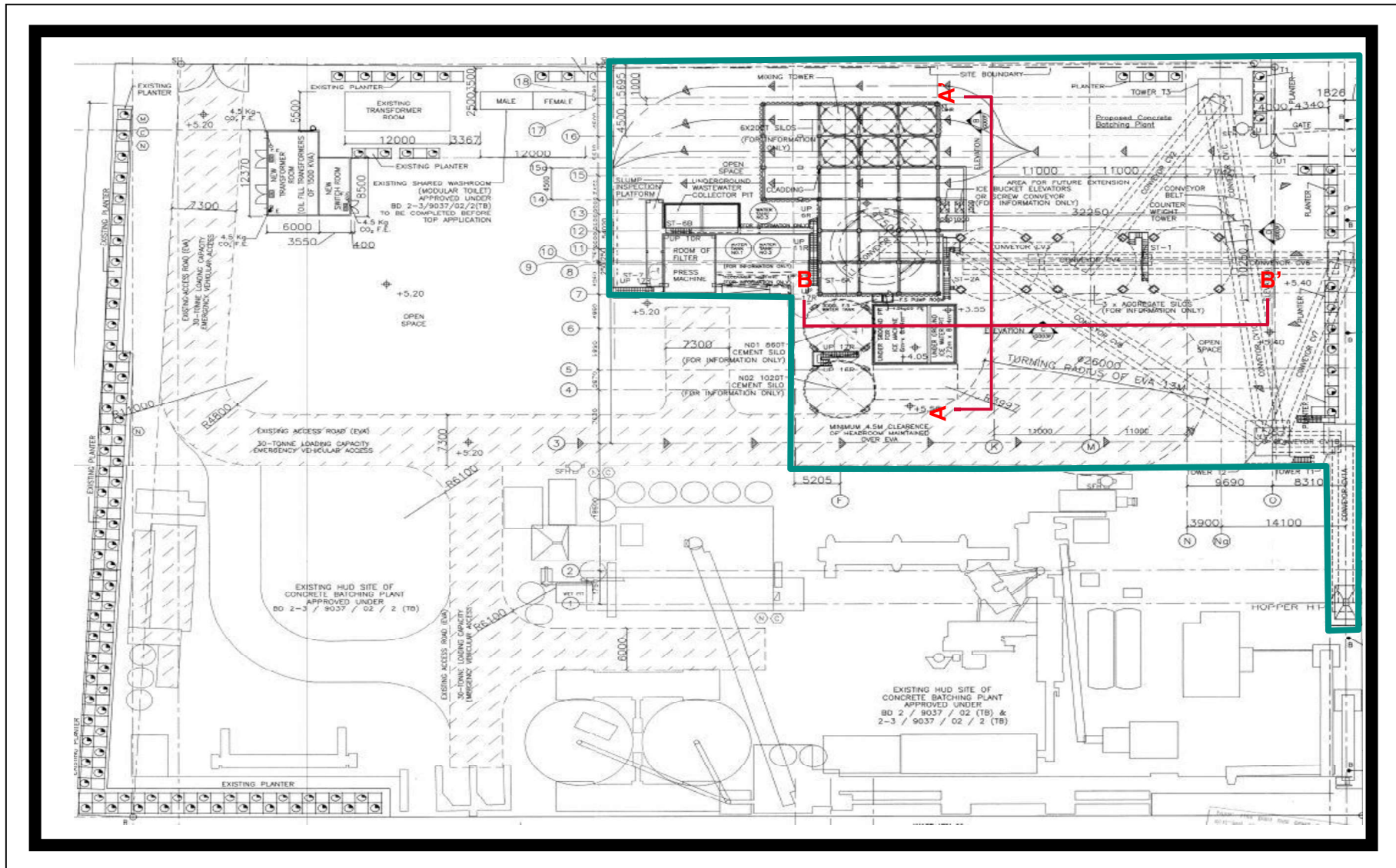
PROJECT NO.: **24002HK**

SCALE: **1 : 750 @A4**

DATE: **01 FEB 2024**

DRAWING TITLE: **LAYOUT PLAN FOR EXISTING CONCRETE BATCHING PLANT**

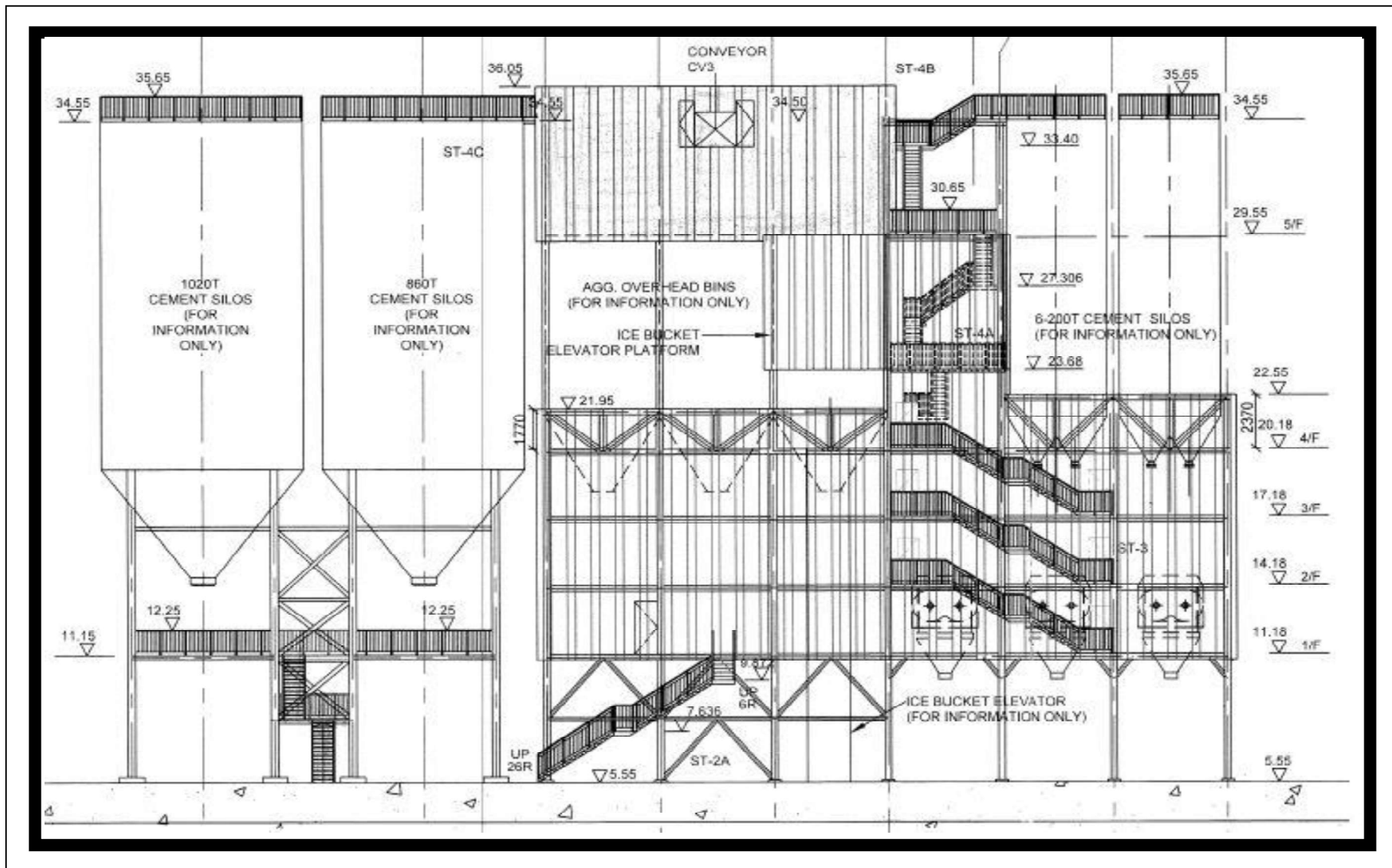




Layout Plan

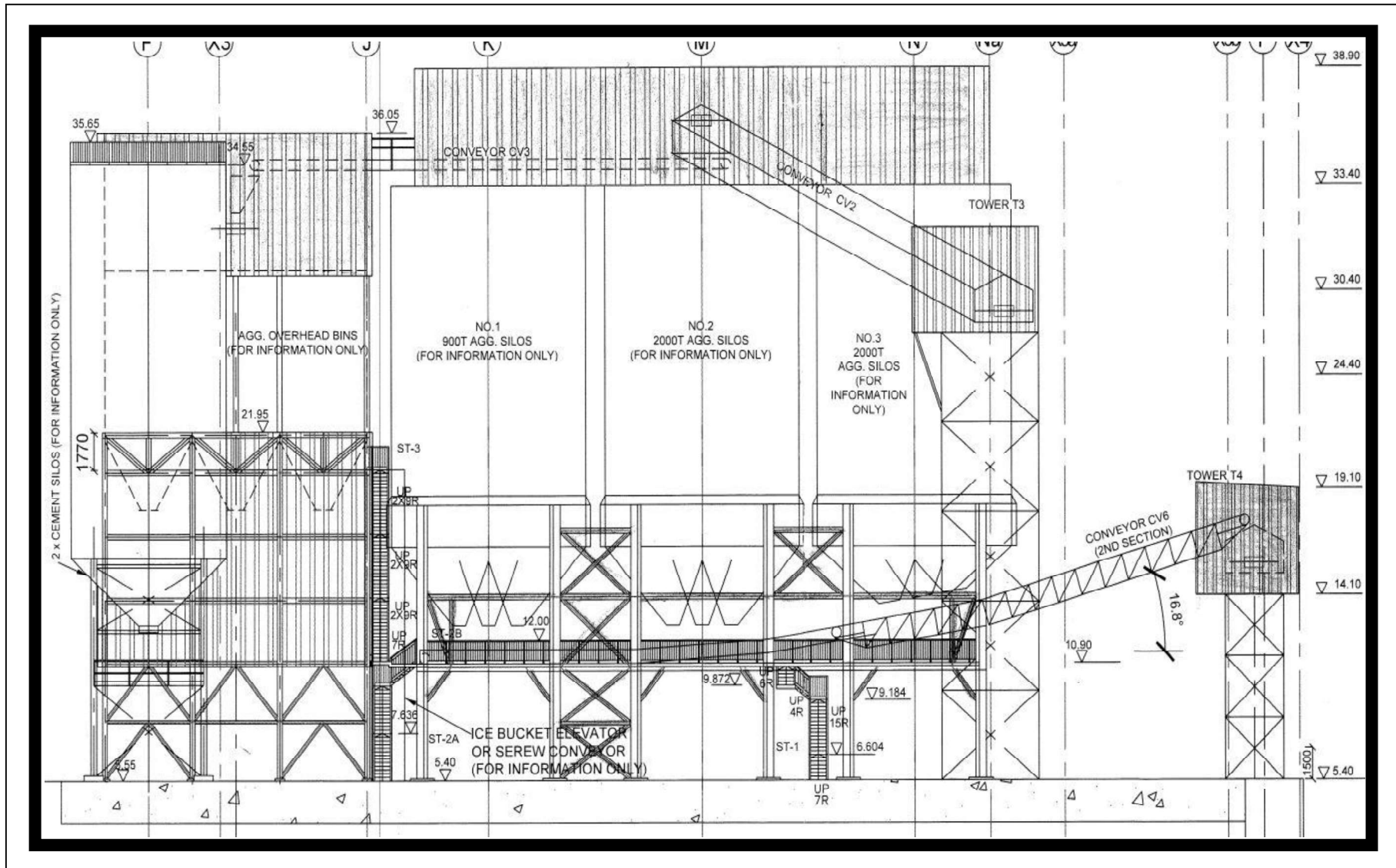
For Identification Purposes Only

Application Site Boundary



Section Plan A – A’

For Identification Purposes Only

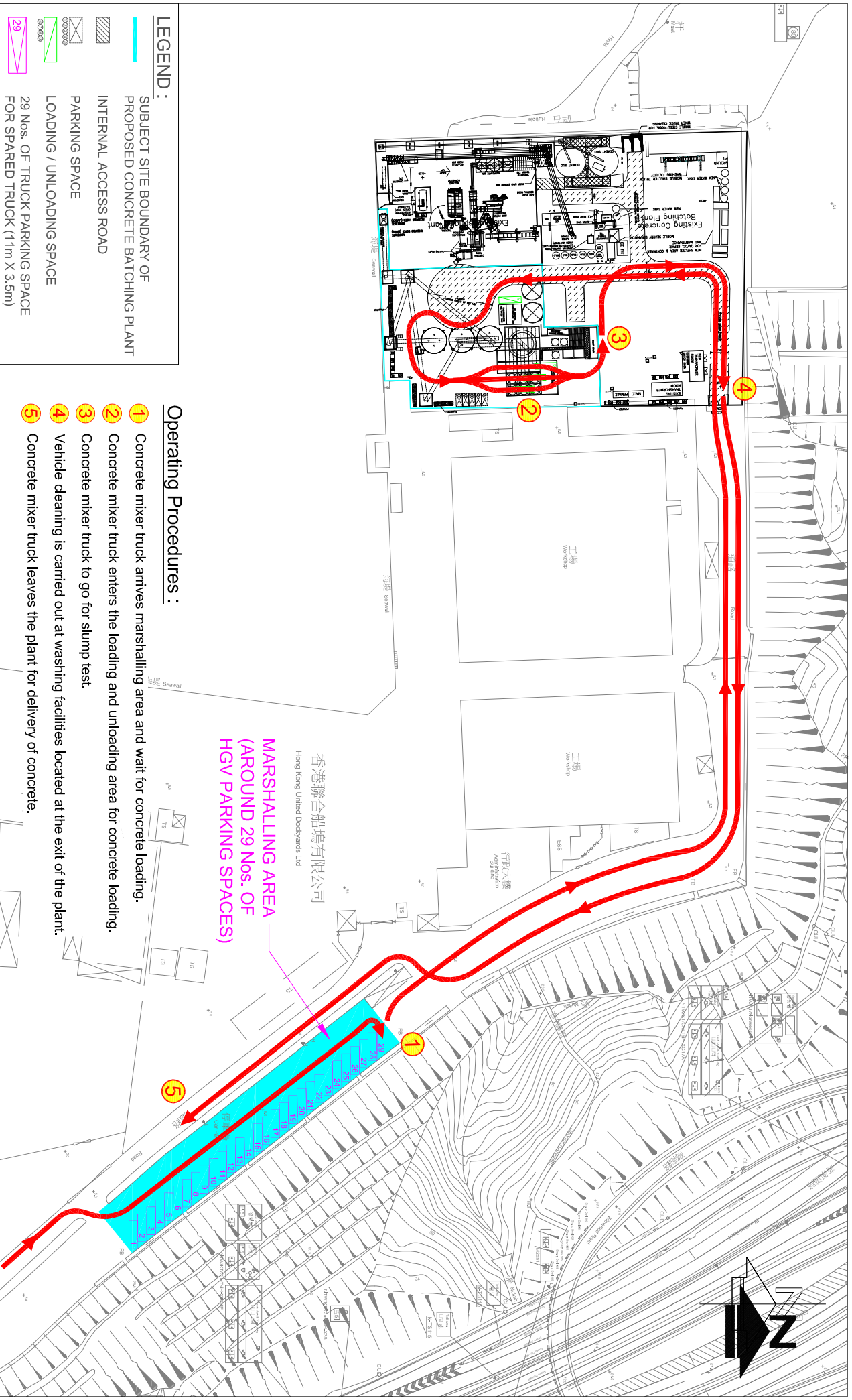


Elevation Plan B - B'

For Identification Purposes Only

Appendix II

Location Plan of the Marshalling Area



Operating Procedures :

- ① Concrete mixer truck arrives marshalling area and wait for concrete loading.
- ② Concrete mixer truck enters the loading and unloading area for concrete loading.
- ③ Concrete mixer truck to go for slump test.
- ④ Vehicle cleaning is carried out at washing facilities located at the exit of the plant.
- ⑤ Concrete mixer truck leaves the plant for delivery of concrete.

**MARSHALLING AREA
(AROUND 29 Nos. OF
HGV PARKING SPACES)**

香港聯合船塢有限公司
Hong Kong United Dockyards Ltd

LEGEND :

- SUBJECT SITE BOUNDARY OF PROPOSED CONCRETE BATCHING PLANT
- INTERNAL ACCESS ROAD
- PARKING SPACE
- LOADING / UNLOADING SPACE
- 29 Nos. OF TRUCK PARKING SPACE FOR SPARED TRUCK (11m X 3.5m)

FIGURE NO.: **2.2**

PROJECT TITLE:

Concrete Batching Plant at Tsing Yi - Renewal Application AT/Y/139

PROJECT NO.:

24002HK

DRAWING TITLE:

OPERATION OF THE CONCRETE BATCHING PLANT

SCALE:

1 : 2000 @A4

DATE:

01 FEB 2024

