

Proposed Temporary Open Storage of New Vehicles (Private Cars,
Construction Materials, Machineries and Equipment and
Storage of Tools and Part with Ancillary Site Office
for a Period of 3 Years and Filling of Land at Various Lots
in D.D.128 and Adjoining Government Land, Ha Tsuen,
Yuen Long, New Territories

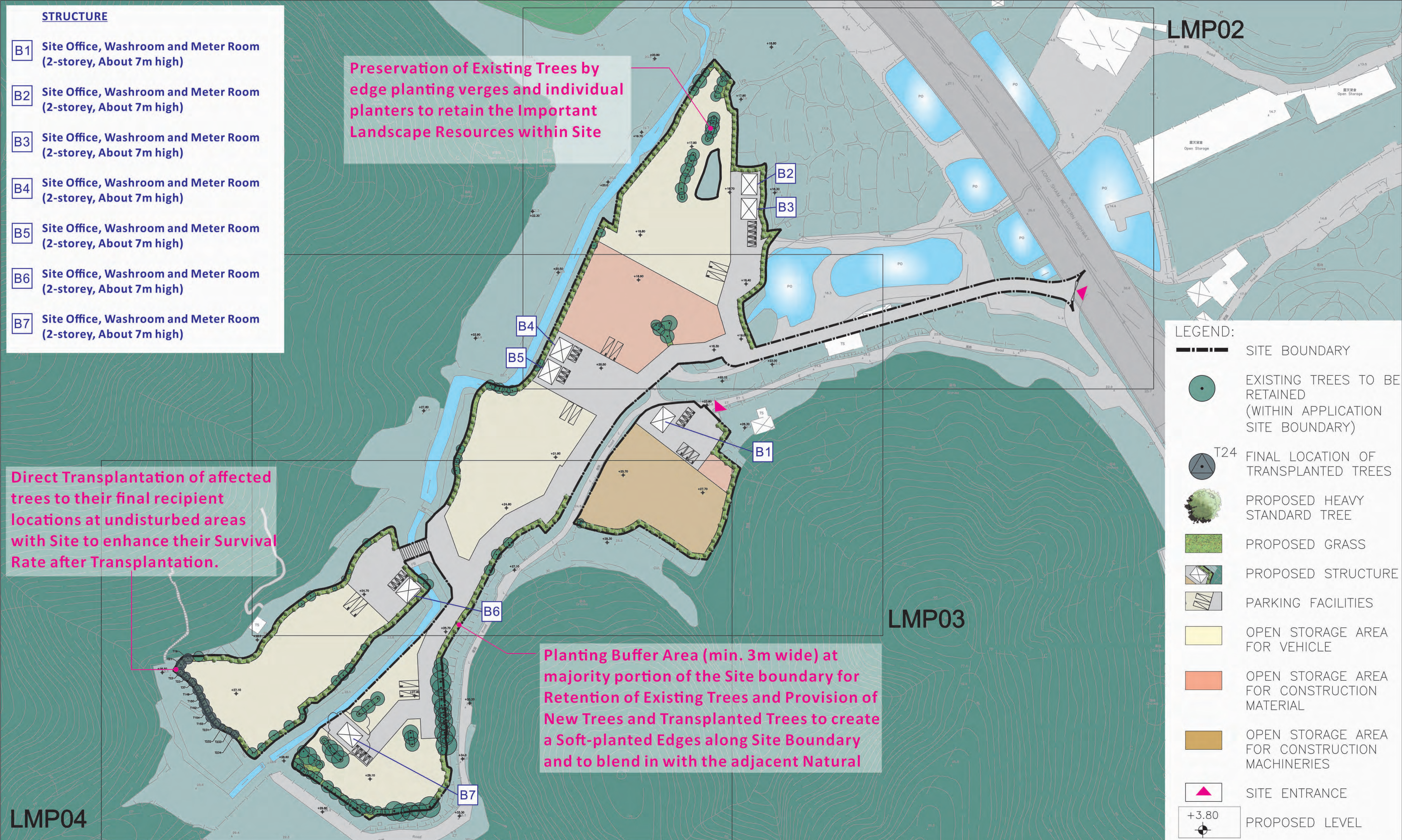
Tree Preservation and Landscaping Proposal

Appendix II

Landscape Master Plan

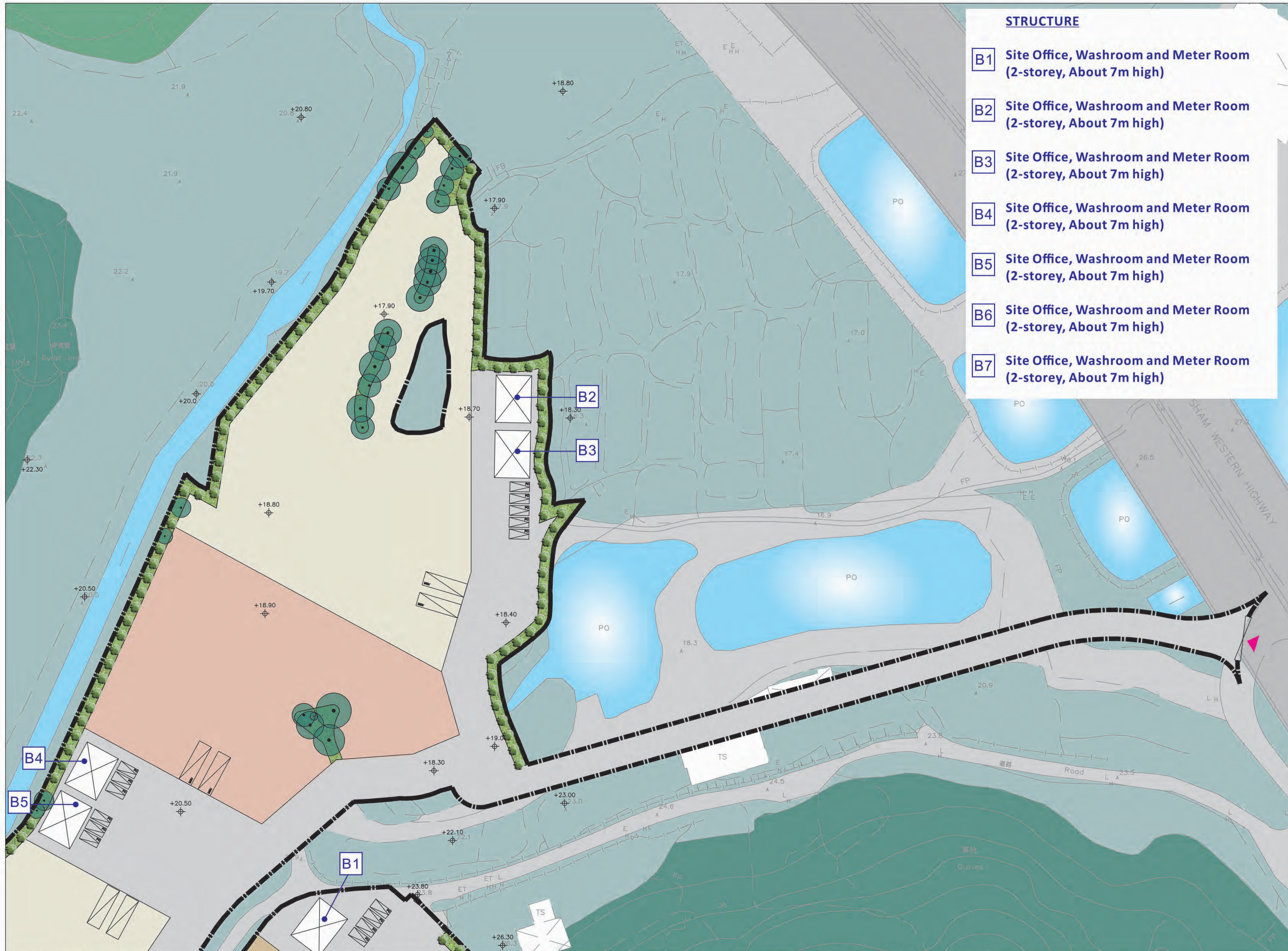
And

Landscape Sections

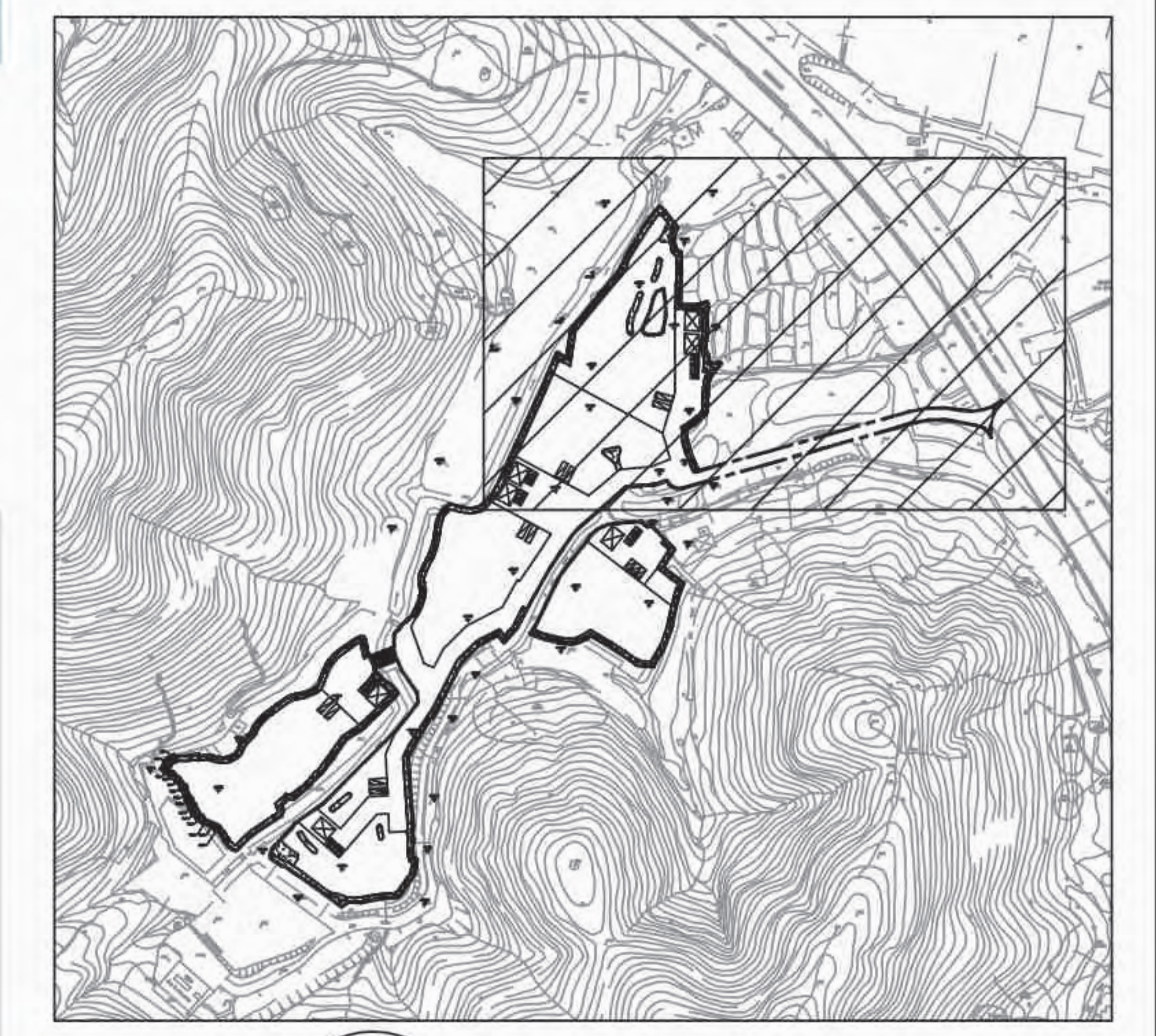


REVISION 校訂	DESCRIPTION 內容摘要	DRAWN 繪圖	DATE 日期	CHECKED 審核	APPROVED 審批	DO NOT SCALE FROM THIS DRAWING 勿按圖量比例	COPYRIGHT RESERVED 保留版權
A	GENERAL AMENDMENT	CADD	06/02/2024	ANK	TEL	PROJECT 工程項目 PROPOSED TEMPORARY OPEN STORAGE OF CONSTRUCTION MATERIALS, CONSTRUCTION MACHINERIES AND VEHICLES WITH ANCILLARY FACILITIES FOR A PERIOD OF THREE YEARS AND ASSOCIATED FILLING OF LAND AT VARIOUS LOTS IN D.D.125 AND ADJOINING GOVERNMENT LAND, HA TSUEN, YUEN LONG, NEW TERRITORIES	DESIGNED 設計 TEL
B	GENERAL AMENDMENT	CADD	23/04/2024	ANK	TEL	DRAWING TITLE 圖紙名稱 LANDSCAPE MASTER PLAN (OVERALL VIEW)	DRAWN 繪圖 CAD
						SCALE 比例 1:2000	CHECKED 審核 TEL
						DATE 日期 OCT 2023	APPROVED 審批 TEL
						REVISION 校訂 B	
						DRAWING NUMBER 圖號 LMP01	
						LANDS LIMITED 景聯設計有限公司 LANDSCAPE PLANNING, DESIGN AND CONSTRUCTION 景觀規劃及設計, 景觀建築 FLAT A, 17/F, SHUN PONT COMMERCIAL BUILDING, 5 - 11 THOMSON ROAD, WAI CHAI, HONG KONG 香港灣仔道5-11號信祥商業大廈17樓A座 TELEPHONE 2868 0980 FACSIMILE 2868 2203 電話:(八五二) 二八六八 零九八零 傳真:(八五二) 二八六八 二二二三	

LanDes



- STRUCTURE**
- B1** Site Office, Washroom and Meter Room (2-storey, About 7m high)
 - B2** Site Office, Washroom and Meter Room (2-storey, About 7m high)
 - B3** Site Office, Washroom and Meter Room (2-storey, About 7m high)
 - B4** Site Office, Washroom and Meter Room (2-storey, About 7m high)
 - B5** Site Office, Washroom and Meter Room (2-storey, About 7m high)
 - B6** Site Office, Washroom and Meter Room (2-storey, About 7m high)
 - B7** Site Office, Washroom and Meter Room (2-storey, About 7m high)



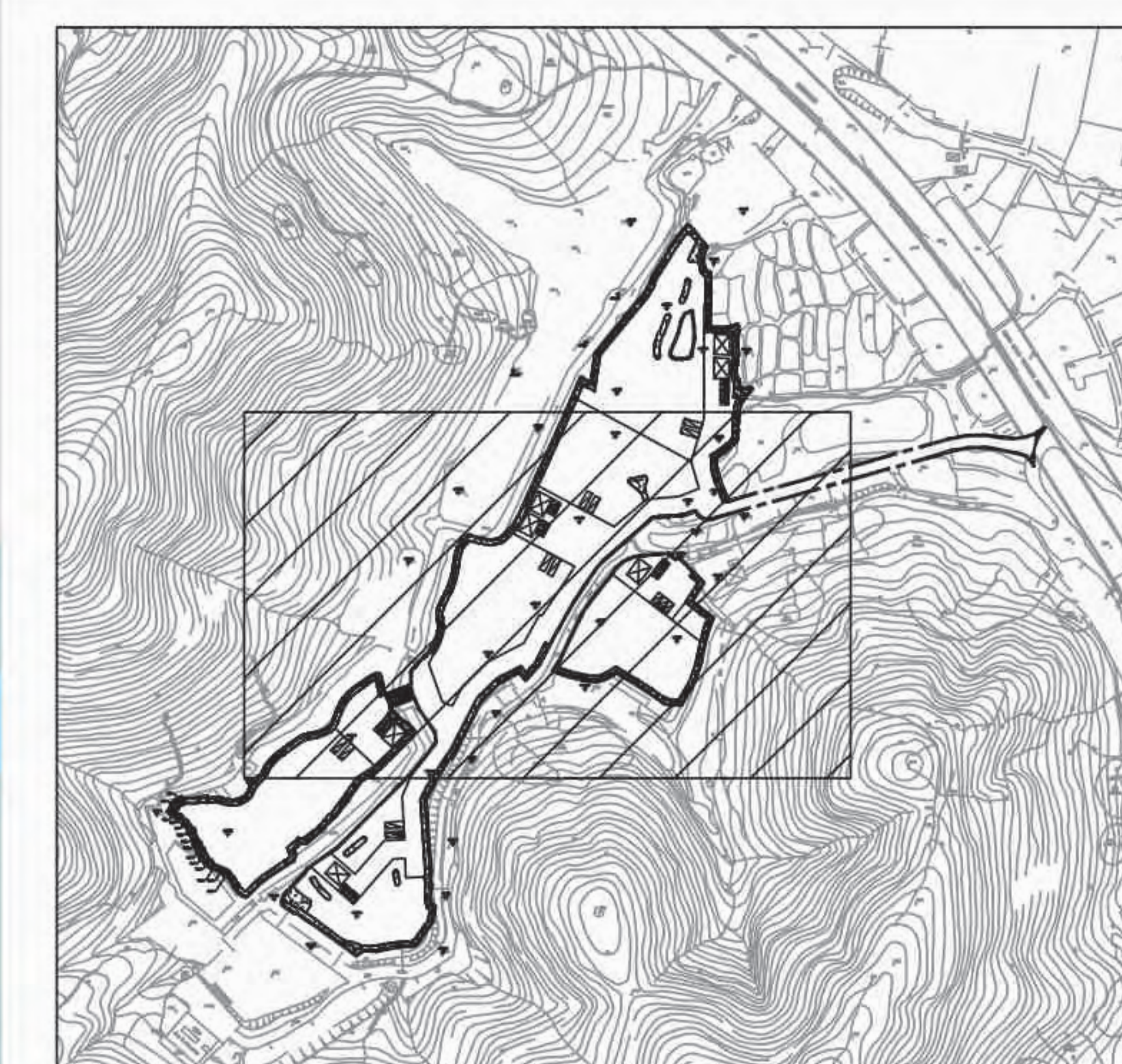
KEY PLAN
SCALE 1:10000

- LEGEND:**
- SITE BOUNDARY
 - EXISTING TREES TO BE RETAINED (WITHIN APPLICATION SITE BOUNDARY)
 - T24 FINAL LOCATION OF TRANSPLANTED TREES
 - PROPOSED HEAVY STANDARD TREE
 - PROPOSED GRASS
 - PROPOSED STRUCTURE
 - PARKING FACILITIES
 - OPEN STORAGE AREA FOR VEHICLE
 - OPEN STORAGE AREA FOR CONSTRUCTION MATERIAL
 - OPEN STORAGE AREA FOR CONSTRUCTION MACHINERIES
 - SITE ENTRANCE
 - PROPOSED LEVEL

REVISION 校訂	DESCRIPTION 內容摘要	DRAWN 繪圖	DATE 日期	CHECKED 審核	APPROVED 審批	DO NOT SCALE FROM THIS DRAWING 勿按圖量比例	COPYRIGHT RESERVED 保留版權
A	GENERAL AMENDMENT	CADD	06/02/2024	ANK	TEL	PROJECT 工程項目 PROPOSED TEMPORARY OPEN STORAGE OF CONSTRUCTION MATERIALS, CONSTRUCTION MACHINERIES AND VEHICLES WITH ANCILLARY FACILITIES FOR A PERIOD OF THREE YEARS AND ASSOCIATED FILLING OF LAND AT VARIOUS LOTS IN D.D.125 AND ADJOINING GOVERNMENT LAND, HA TSUEN, YUEN LONG, NEW TERRITORIES SCALE 比例 1:1000 DATE 日期 OCT 2023 REVISION 校訂 B DRAWING NUMBER 圖號 LMP02	DESIGNED 設計 TEL
B	GENERAL AMENDMENT	CADD	23/04/2024	ANK	TEL		DRAWN 繪圖 CAD
						DRAWING TITLE 圖紙名稱 LANDSCAPE MASTER PLAN (SHEET 1 OF 3) REVISION 校訂 B DRAWING NUMBER 圖號 LMP02 CHECKED 審核 TEL APPROVED 審批 TEL	
						LANDES LIMITED 景聯設計有限公司 LANDSCAPE PLANNING, DESIGN AND CONSTRUCTION 景觀規劃及設計, 景觀建築 FLAT A, 17/F, SHUN PONT COMMERCIAL BUILDING, 5 - 11 THOMSON ROAD, WAI CHAI, HONG KONG 香港灣仔道5-11號信祥商業大廈17樓A座 TELEPHONE 2868 0980 FACSIMILE 2868 2203 電話:(八五二) 二八六八 零九八零 傳真:(八五二) 二八六八 二二零三	LanDes C2331-LMP02 CAD FILENAME :

STRUCTURE

- B1** Site Office, Washroom and Meter Room (2-storey, About 7m high)
- B2** Site Office, Washroom and Meter Room (2-storey, About 7m high)
- B3** Site Office, Washroom and Meter Room (2-storey, About 7m high)
- B4** Site Office, Washroom and Meter Room (2-storey, About 7m high)
- B5** Site Office, Washroom and Meter Room (2-storey, About 7m high)
- B6** Site Office, Washroom and Meter Room (2-storey, About 7m high)
- B7** Site Office, Washroom and Meter Room (2-storey, About 7m high)



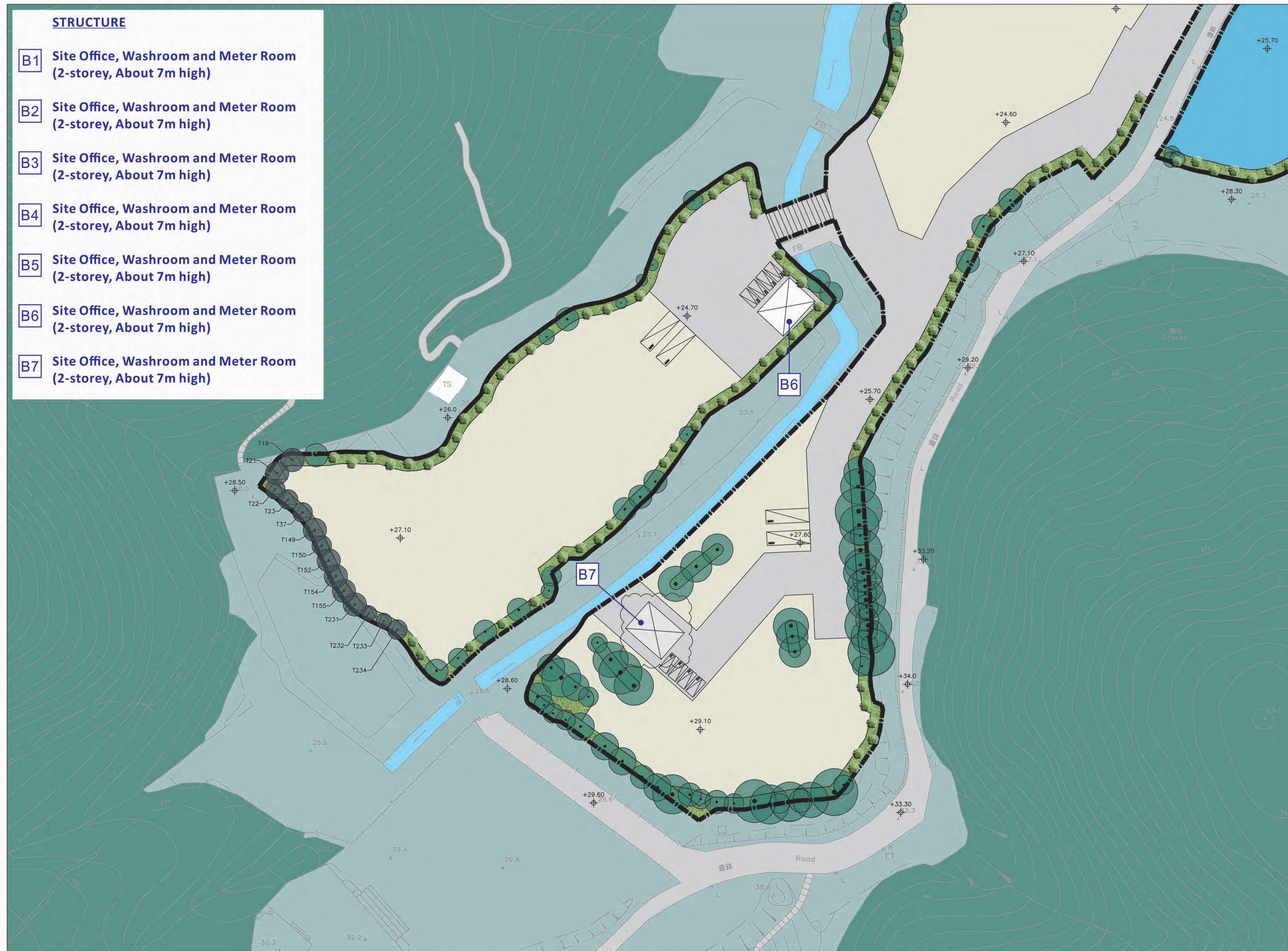
KEY PLAN
SCALE 1:10000

- LEGEND:**
- SITE BOUNDARY
 - EXISTING TREES TO BE RETAINED (WITHIN APPLICATION SITE BOUNDARY)
 - T24 FINAL LOCATION OF TRANSPLANTED TREES
 - PROPOSED HEAVY STANDARD TREE
 - PROPOSED GRASS
 - PROPOSED STRUCTURE
 - PARKING FACILITIES
 - OPEN STORAGE AREA FOR VEHICLE
 - OPEN STORAGE AREA FOR CONSTRUCTION MATERIAL
 - OPEN STORAGE AREA FOR CONSTRUCTION MACHINERIES
 - SITE ENTRANCE
 - PROPOSED LEVEL

REVISION 校訂	DESCRIPTION 內容摘要	DRAWN 繪圖	DATE 日期	CHECKED 審核	APPROVED 審批	DO NOT SCALE FROM THIS DRAWING 勿按圖量比例	COPYRIGHT RESERVED 保留版權
A	GENERAL AMENDMENT	CADD	06/02/2024	ANK	TEL	PROJECT 工程項目 PROPOSED TEMPORARY OPEN STORAGE OF CONSTRUCTION MATERIALS, CONSTRUCTION MACHINERIES AND VEHICLES WITH ANCILLARY FACILITIES FOR A PERIOD OF THREE YEARS AND ASSOCIATED FILLING OF LAND AT VARIOUS LOTS IN D.D.125 AND ADJOINING GOVERNMENT LAND, HA TSUEN, YUEN LONG, NEW TERRITORIES DRAWING TITLE 圖紙名稱 LANDSCAPE MASTER PLAN (SHEET 2 OF 3)	DESIGNED 設計 TEL
B	GENERAL AMENDMENT	CADD	23/04/2024	ANK	TEL		SCALE 比例 1:1000 DATE 日期 OCT 2023 REVISION 校訂 B DRAWING NUMBER 圖號 LMP03
						LANDES LIMITED 景誠設計有限公司 LANDSCAPE PLANNING, DESIGN AND CONSTRUCTION 景觀規劃及設計, 景觀建築 FLAT A, 17/F, SHUN PONT COMMERCIAL BUILDING, 5 - 11 THOMSON ROAD, WAI CHAI, HONG KONG 香港灣仔軒尼詩道5-11號信昇商業大廈17樓A座 TELEPHONE 2868 0980 FACSIMILE 2868 2203 電話:(八五二) 二八六八 零九八零 傳真:(八五二) 二八六八 二二零三	LanDes CADD FILENAME : C2331-LMP03

STRUCTURE

- B1** Site Office, Washroom and Meter Room (2-storey, About 7m high)
- B2** Site Office, Washroom and Meter Room (2-storey, About 7m high)
- B3** Site Office, Washroom and Meter Room (2-storey, About 7m high)
- B4** Site Office, Washroom and Meter Room (2-storey, About 7m high)
- B5** Site Office, Washroom and Meter Room (2-storey, About 7m high)
- B6** Site Office, Washroom and Meter Room (2-storey, About 7m high)
- B7** Site Office, Washroom and Meter Room (2-storey, About 7m high)



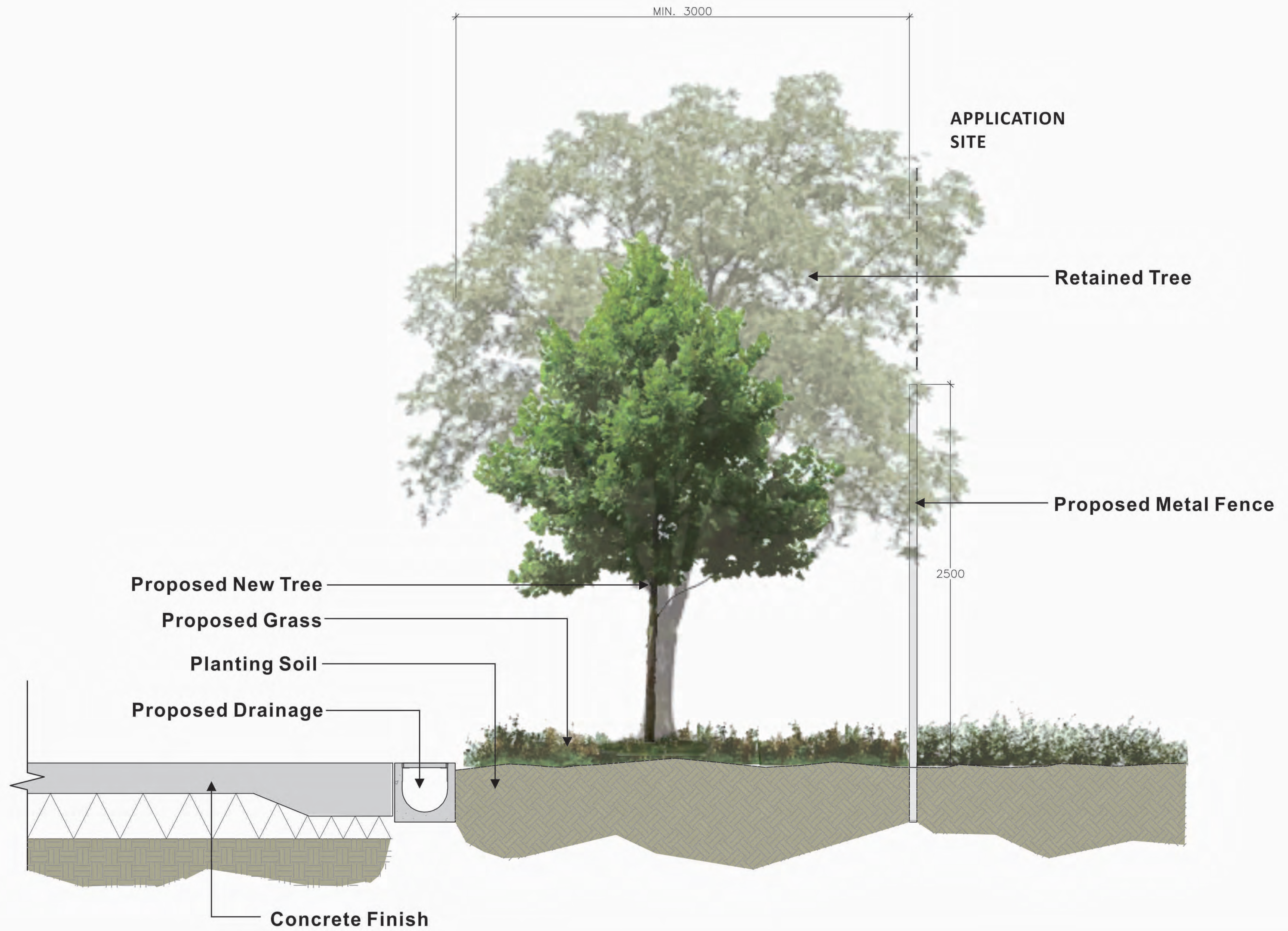
KEY PLAN
SCALE 1:10000

LEGEND:

- SITE BOUNDARY
- EXISTING TREES TO BE RETAINED (WITHIN APPLICATION SITE BOUNDARY)
- T24 FINAL LOCATION OF TRANSPLANTED TREES
- PROPOSED HEAVY STANDARD TREE
- PROPOSED GRASS
- PROPOSED STRUCTURE
- PARKING FACILITIES
- OPEN STORAGE AREA FOR VEHICLE
- OPEN STORAGE AREA FOR CONSTRUCTION MATERIAL
- OPEN STORAGE AREA FOR CONSTRUCTION MACHINERIES
- SITE ENTRANCE
- PROPOSED LEVEL

REVISION 校訂	DESCRIPTION 內容摘要	DRAWN 繪圖	DATE 日期	CHECKED 審核	APPROVED 審批	DO NOT SCALE FROM THIS DRAWING 勿按圖量比例	COPYRIGHT RESERVED 保留版權
A	GENERAL AMENDMENT	CADD	06/02/2024	ANK	TEL	PROJECT 工程項目 PROPOSED TEMPORARY OPEN STORAGE OF CONSTRUCTION MATERIALS, CONSTRUCTION MACHINERIES AND VEHICLES WITH ANCILLARY FACILITIES FOR A PERIOD OF THREE YEARS AND ASSOCIATED FILLING OF LAND AT VARIOUS LOTS IN D.D.125 AND ADJOINING GOVERNMENT LAND, HA TSUEN, YUEN LONG, NEW TERRITORIES DRAWING TITLE 圖紙名稱 LANDSCAPE MASTER PLAN (SHEET 3 OF 3)	DESIGNED 設計 TEL
B	GENERAL AMENDMENT	CADD	23/04/2024	ANK	TEL		SCALE 比例 1:1000
						DATE 日期 OCT 2023	CHECKED 審核 TEL
						REVISION 校訂 B	APPROVED 審批 TEL
						DRAWING NUMBER 圖號 LMP04	
						LANDES LIMITED 景誠設計有限公司 LANDSCAPE PLANNING, DESIGN AND CONSTRUCTION 景觀規劃及設計, 景觀建築 FLAT A, 17/F, SHUN PONT COMMERCIAL BUILDING, 5 - 11 THOMSON ROAD, WAI CHAI, HONG KONG 香港灣仔軒尼臣道5-11號信和商業大廈17樓A座 TELEPHONE 2868 0980 FACSIMILE 2868 2203 電話:(八五二) 二八六八 零九八零 傳真:(八五二) 二八六八 二二零三	

LanDes



REVISION 校訂	DESCRIPTION 內容摘要	DRAWN 繪圖	DATE 日期	CHECKED 審核	APPROVED 審批	DO NOT SCALE FROM THIS DRAWING 勿按圖量比例	SCALE 比例	DESIGNED 設計	COPYRIGHT RESERVED 保留版權
						PROJECT 工程項目 PROPOSED TEMPORARY OPEN STORAGE OF CONSTRUCTION MATERIALS, CONSTRUCTION MACHINERIES AND VEHICLES WITH ANCILLARY FACILITIES FOR A PERIOD OF THREE YEARS AND ASSOCIATED FILLING OF LAND AT VARIOUS LOTS IN D.D.125 AND ADJOINING GOVERNMENT LAND, HA TSUEN, YUEN LONG, NEW TERRITORIES	1:30	TEL	
						OCT 2023	CAD		
						REVISION 校訂	CHECKED 審核		
						DRAWING NUMBER 圖號	APPROVED 審批		
						LD101	TEL		
						LANDES LIMITED 景園設計有限公司 LANDSCAPE PLANNING, DESIGN AND CONSTRUCTION 景觀規劃及設計, 景觀建築 FLAT A, 17/F, SHUN PONT COMMERCIAL BUILDING, 5 - 11 THOMSON ROAD, WAI CHAI, HONG KONG 香港灣仔道5-11號信祥商業大廈17樓A座 TELEPHONE 2868 0980 FACSIMILE 2868 2203 電話:(八五二) 二八六八 零九八零 傳真:(八五二) 二八六八 二二二三			
									CAD FILENAME : C2331-LD101

Proposed Temporary Open Storage of New Vehicles (Private Cars,
Construction Materials, Machineries and Equipment and
Storage of Tools and Part with Ancillary Site Office
for a Period of 3 Years and Filling of Land at Various Lots
in D.D.128 and Adjoining Government Land, Ha Tsuen,
Yuen Long, New Territories

Tree Preservation and Landscaping Proposal

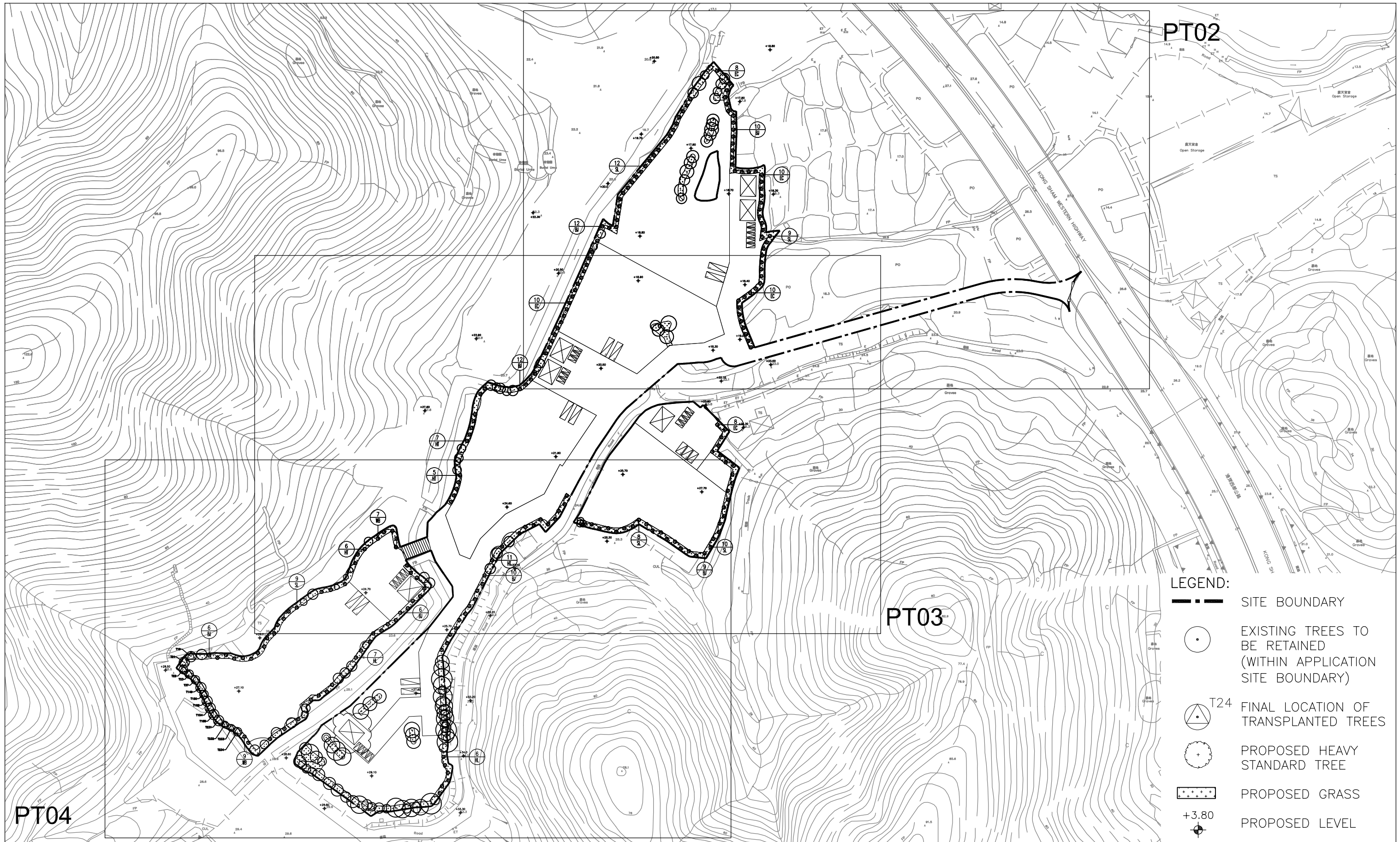
Appendix III

Planting Plans

Quantity	Code	Chinese Name	Botanical Name	Height (mm)	Spread (mm)	DBH (mm)	Spacing (mm)	Remark
HEAVY STANDARD TREES								
65	BJ	秋楓	<i>Bischofia javanica</i>	4500	1500	75	5000	Straight trunk, balanced form
46	EC	中華杜英	<i>Elaeocarpus chinensis</i>	3500	1500	75	5000	Straight trunk, balanced form
13	HL	酒瓶椰子	<i>Hyophorbe lagenicaulis</i>	3500	1500	100	5000	Abundance of Foliage, Well-Formed, Full Spread Formed
29	HT	洋紫荆	<i>Bauhinia blakeana</i>	3000	1500	75	5000	Abundance of Foliage, Well-Formed, Full Spread Formed
48	SL	假蘋婆	<i>Sterculia lanceolata</i>	3000	1500	75	5000	Straight trunk, balanced form
16	WB	狐尾椰子	<i>Wodyetia bifurcata</i>	3000	1500	75	5000	Straight trunk, balanced form
GRASS								
4746m ²	Axo	大葉草	<i>Axonopus compressus</i>	-	-	-	-	Bermuda tif dwarf + overseeding

REVISION 校訂	DESCRIPTION 內容摘要	DRAWN 繪圖	DATE 日期	CHECKED 審核	APPROVED 審批	DO NOT SCALE FROM THIS DRAWING 勿按圖量比例	SCALE 比例	DESIGNED 設計	COPYRIGHT RESERVED 保留版權
A	GENERAL AMENDMENT	CADD	06/02/2024	ANK	TEL	PROJECT 工程項目 PROPOSED TEMPORARY OPEN STORAGE OF CONSTRUCTION MATERIALS, CONSTRUCTION MACHINERIES AND VEHICLES WITH ANCILLARY FACILITIES FOR A PERIOD OF THREE YEARS AND ASSOCIATED FILLING OF LAND AT VARIOUS LOTS IN D.D.125 AND ADJOINING GOVERNMENT LAND, HA TSUEN, YUEN LONG, NEW TERRITORIES	N.T.S.	TEL	
						DRAWING TITLE 圖紙名稱 PLANTING SCHEDULE	DATE 日期 OCT 2023	DRAWN 繪圖 CAD	
						REVISION 校訂 A	REVISION 校訂 A	CHECKED 審核 TEL	
						DRAWING NUMBER 圖號 PS01	DRAWING NUMBER 圖號 PS01	APPROVED 審批 TEL	
						LANDS LIMITED 景聯設計有限公司 LANDSCAPE PLANNING, DESIGN AND CONSTRUCTION 景觀規劃及設計, 園林建築 FLAT A, 17/F, SHUN PONT COMMERCIAL BUILDING, 5 - 11 THOMSON ROAD, WAI CHAI, HONG KONG 香港灣仔譚臣道5-11號在祥龍大廈17樓A室 TELEPHONE 2868 0980 FACSIMILE 2868 2203 電話:(八五二) 二八六八 零九八零 傳真:(八五二) 二八六八 二二零三			
									CAD FILENAME : C2331-PS01





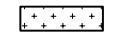
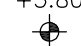




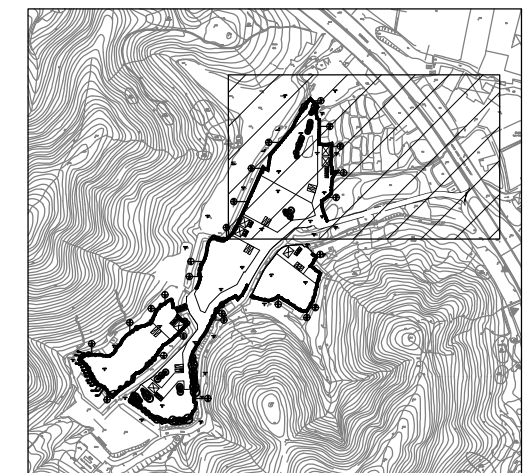
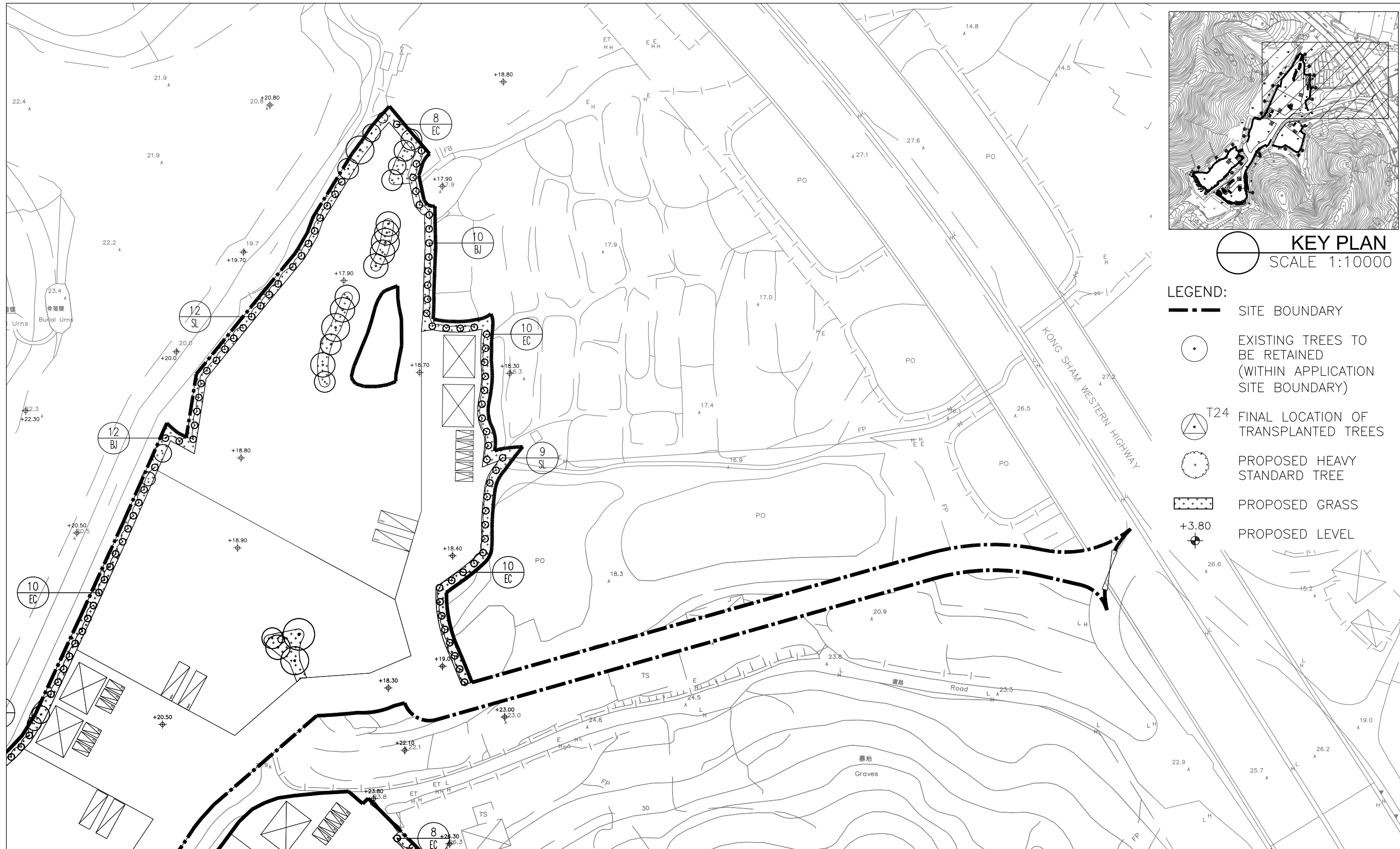
PT02

PT03

PT04

- LEGEND:**
-  SITE BOUNDARY
 -  EXISTING TREES TO BE RETAINED (WITHIN APPLICATION SITE BOUNDARY)
 -  T24 FINAL LOCATION OF TRANSPLANTED TREES
 -  PROPOSED HEAVY STANDARD TREE
 -  PROPOSED GRASS
 -  +3.80 PROPOSED LEVEL

REVISION 校訂	DESCRIPTION 內容摘要	DRAWN 繪圖	DATE 日期	CHECKED 審核	APPROVED 審批	DO NOT SCALE FROM THIS DRAWING 勿按圖量比例	COPYRIGHT RESERVED 保留版權
A	GENERAL AMENDMENT	CADD	06/02/2024	ANK	TEL	PROJECT 工程項目 PROPOSED TEMPORARY OPEN STORAGE OF CONSTRUCTION MATERIALS, CONSTRUCTION MACHINERIES AND VEHICLES WITH AUXILIARY FACILITIES FOR PERIOD OF THREE YEARS AND ASSOCIATED FILLING OF LAND AT VARIOUS LOTS IN D.D.125 AND ADJOINING GOVERNMENT LAND, HA TSUEN, YUEN LONG, NEW TERRITORIES DRAWING TITLE 圖紙名稱 PLANTING PLAN (OVERALL VIEW)	DESIGNED 設計 TEL
B	GENERAL AMENDMENT	CADD	23/04/2024	ANK	TEL		SCALE 比例 1:2000 DATE 日期 OCT 2023 REVISION 校訂 B DRAWING NUMBER 圖號 PT01
						LANDES LIMITED 景灝設計有限公司 LANDSCAPE PLANNING, DESIGN AND CONSTRUCTION 景觀規劃及設計, 園林建築 FLAT A, 17/F, SHUN PONT COMMERCIAL BUILDING, 5 - 11 THOMSON ROAD, WAI CHAI, HONG KONG 香港灣仔軒尼詩道5-11號匯豐大廈17樓A室 TELEPHONE 2868 0980 FACSIMILE 2868 2263 電話:(八五二) 二八六八 零九八零 傳真:(八五二) 二八六八 二二零三	LanDes COPYRIGHT RESERVED 保留版權 CADD FILENAME : C2331-PT01

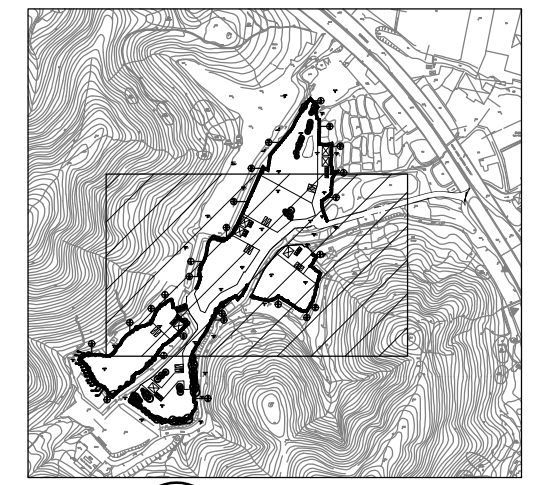
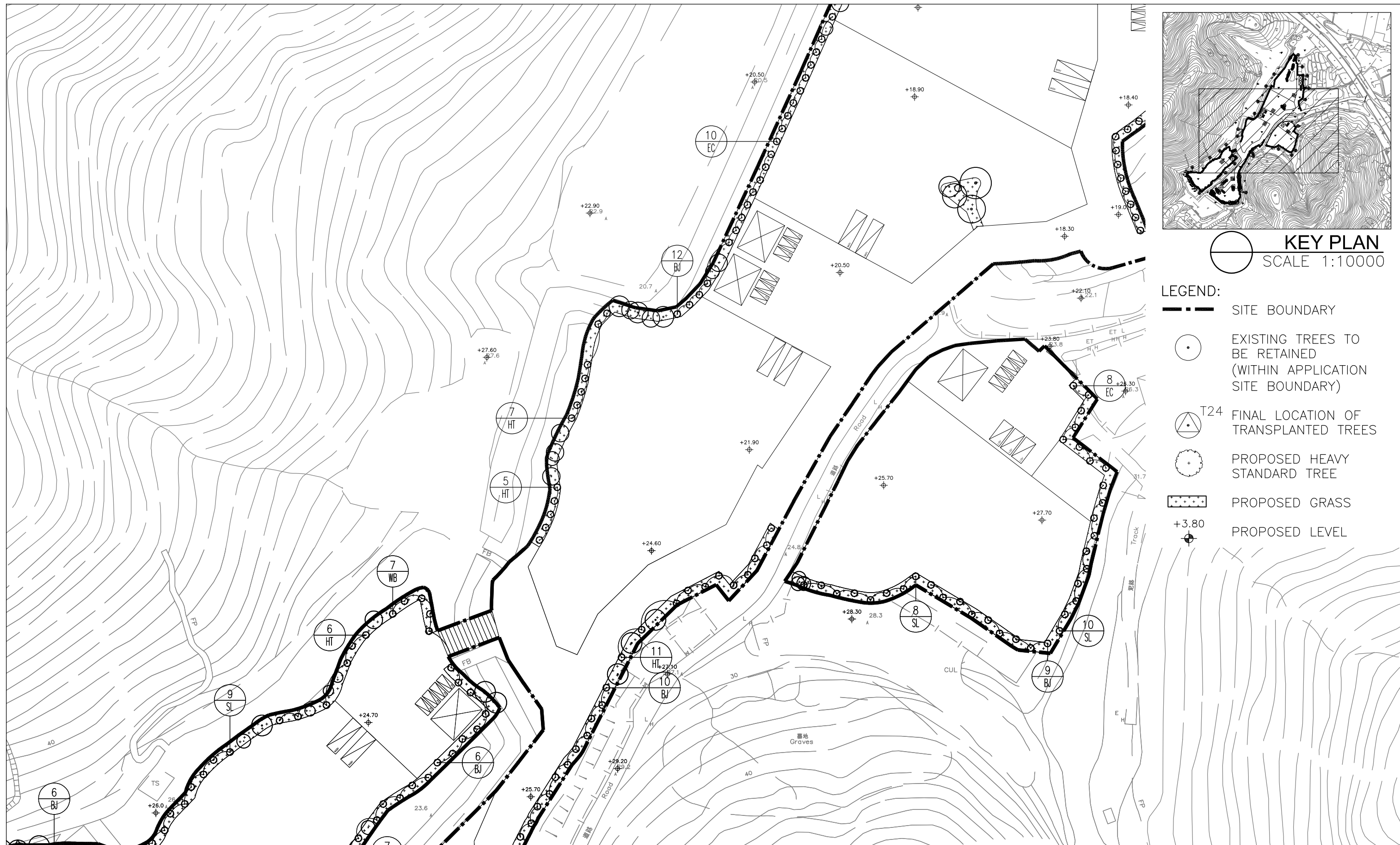


KEY PLAN
SCALE 1:10000

- LEGEND:**
- SITE BOUNDARY
 - EXISTING TREES TO BE RETAINED (WITHIN APPLICATION SITE BOUNDARY)
 - T24 FINAL LOCATION OF TRANSPLANTED TREES
 - PROPOSED HEAVY STANDARD TREE
 - PROPOSED GRASS
 - PROPOSED LEVEL

REVISION 校訂	DESCRIPTION 內容摘要	DRAWN 繪圖	DATE 日期	CHECKED 審核	APPROVED 審批	DO NOT SCALE FROM THIS DRAWING 勿按圖量比例	COPYRIGHT RESERVED 保留版權	
A	GENERAL AMENDMENT	CADD	06/02/2024	ANK	TEL	PROJECT 工程項目 PROPOSED TEMPORARY OPEN STORAGE OF CONSTRUCTION MATERIALS, CONSTRUCTION MACHINERIES AND VEHICLES WITH ANCILLARY FACILITIES FOR A PERIOD OF THREE YEARS AND ASSOCIATED FILLING OF LAND AT VARIOUS LOTS IN D.D.125 AND ADJOINING GOVERNMENT LAND, HA TSUEN, YUEN LONG, NEW TERRITORIES	DESIGNED 設計 TEL	
B	GENERAL AMENDMENT	CADD	23/04/2024	ANK	TEL		SCALE 比例 1:1000	DRAWN 繪圖 CAD
						DRAWING TITLE 圖紙名稱 PLANTING PLAN (SHEET 1 OF 3)	DATE 日期 OCT 2023	CHECKED 審核 TEL
						REVISION 校訂 B	APPROVED 審批 TEL	
						DRAWING NUMBER 圖號 PT02		
						LANDES LIMITED 景園設計有限公司 LANDSCAPE PLANNING, DESIGN AND CONSTRUCTION 景觀規劃及設計, 園林建築 FLAT A, 17/F, SHUN PONT COMMERCIAL BUILDING, 5 - 11 THOMSON ROAD, WAI CHAI, HONG KONG 香港灣仔軒尼詩道5-11號匯豐商業大廈17樓A室 TELEPHONE 2868 0980 FACSIMILE 2868 2263 電話:(八五二) 二八六八 零九八零 傳真:(八五二) 二八六八 二二零三	COPYRIGHT RESERVED 保留版權	

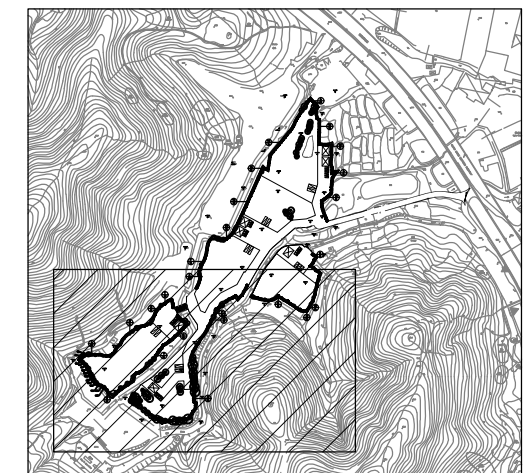
LanDes



- KEY PLAN**
SCALE 1:10000
- LEGEND:**
- SITE BOUNDARY
 - EXISTING TREES TO BE RETAINED (WITHIN APPLICATION SITE BOUNDARY)
 - T24 FINAL LOCATION OF TRANSPLANTED TREES
 - PROPOSED HEAVY STANDARD TREE
 - PROPOSED GRASS
 - PROPOSED LEVEL

REVISION 校訂	DESCRIPTION 內容摘要	DRAWN 繪圖	DATE 日期	CHECKED 審核	APPROVED 審批	DO NOT SCALE FROM THIS DRAWING 勿按圖量比例	COPYRIGHT RESERVED 保留版權
A	GENERAL AMENDMENT	CADD	06/02/2024	ANK	TEL	PROJECT 工程項目 PROPOSED TEMPORARY OPEN STORAGE OF CONSTRUCTION MATERIALS, CONSTRUCTION MACHINERIES AND VEHICLES WITH ANCILLARY FACILITIES FOR A PERIOD OF THREE YEARS AND ASSOCIATED FILLING OF LAND AT VARIOUS LOTS IN D.D.125 AND ADJOINING GOVERNMENT LAND, HA TSUEN, YUEN LONG, NEW TERRITORIES	DESIGNED 設計 TEL
B	GENERAL AMENDMENT	CADD	23/04/2024	ANK	TEL	DRAWING TITLE 圖紙名稱 PLANTING PLAN (SHEET 2 OF 3)	DRAWN 繪圖 CAD
						SCALE 比例 1:1000	CHECKED 審核 TEL
						DATE 日期 OCT 2023	APPROVED 審批 TEL
						REVISION 校訂 B	
						DRAWING NUMBER 圖號 PT03	
						LANDES LIMITED 景灑設計有限公司 LANDSCAPE PLANNING, DESIGN AND CONSTRUCTION 景觀規劃及設計, 園林建築 FLAT A, 17/F, SHUN PONT COMMERCIAL BUILDING, 5 - 11 THOMSON ROAD, WAI CHAI, HONG KONG 香港灣仔軒尼詩道5-11號匯豐商業大廈17樓A室 TELEPHONE 2868 0980 FACSIMILE 2868 2263 電話:(八五二) 二八六八 零九八零 傳真:(八五二) 二八六八 二二三三	

LanDes



- KEY PLAN**
SCALE 1:10000
- LEGEND:**
- SITE BOUNDARY
 - EXISTING TREES TO BE RETAINED (WITHIN APPLICATION SITE BOUNDARY)
 - T24 FINAL LOCATION OF TRANSPLANTED TREES
 - PROPOSED HEAVY STANDARD TREE
 - PROPOSED GRASS
 - PROPOSED LEVEL

REVISION 校訂	DESCRIPTION 內容摘要	DRAWN 繪圖	DATE 日期	CHECKED 審核	APPROVED 審批	DO NOT SCALE FROM THIS DRAWING 勿按圖量比例	COPYRIGHT RESERVED 保留版權	
A	GENERAL AMENDMENT	CADD	06/02/2024	ANK	TEL	PROJECT 工程項目 PROPOSED TEMPORARY OPEN STORAGE OF CONSTRUCTION MATERIALS, CONSTRUCTION MACHINERIES AND VEHICLES WITH ANCILLARY FACILITIES FOR A PERIOD OF THREE YEARS AND ASSOCIATED FILLING OF LAND AT VARIOUS LOTS IN D.D.125 AND ADJOINING GOVERNMENT LAND, HA TSUEN, YUEN LONG, NEW TERRITORIES	DESIGNED 設計 TEL	
B	GENERAL AMENDMENT	CADD	23/04/2024	ANK	TEL		SCALE 比例 1:1000	DRAWN 繪圖 CAD
						DRAWING TITLE 圖紙名稱 PLANTING PLAN (SHEET 3 OF 3)	DATE 日期 OCT 2023 REVISION 校訂 B DRAWING NUMBER 圖號 PT04	CHECKED 審核 TEL APPROVED 審批 TEL
						LANDES LIMITED 景園設計有限公司 LANDSCAPE PLANNING, DESIGN AND CONSTRUCTION 景觀規劃及設計, 園林建築 FLAT A, 17/F, SHUN PONT COMMERCIAL BUILDING, 5 - 11 THOMSON ROAD, WAI CHAI, HONG KONG 香港灣仔軒尼詩道5-11號匯豐商業大廈17樓A室 TELEPHONE 2868 0980 FACSIMILE 2868 2203 電話:(八五二) 二八六八 零九八零 傳真:(八五二) 二八六八 二二三三	LanDes	
						CAD FILENAME :	C2331-PT04	