

Legend:

Application Site 申請範圍

Appendix 1

Location: DD 107 Lot 1247 (Part),  
1248 (Part), 1249 (Part), 1252 (Part)  
and 1253 (Part)

OZP: S/YL-KTN/11  
District: Kam Tin North  
Zoning: Agriculture

Date: 23 April 2024

Location

位置圖

擬議臨時露天存放建築機械及物料  
(為期3年)及填土

Proposed Temporary Open Storage of  
Construction Machinery and Materials  
For a Period of 3 Years and Filling of Land

SCALE

1:1000

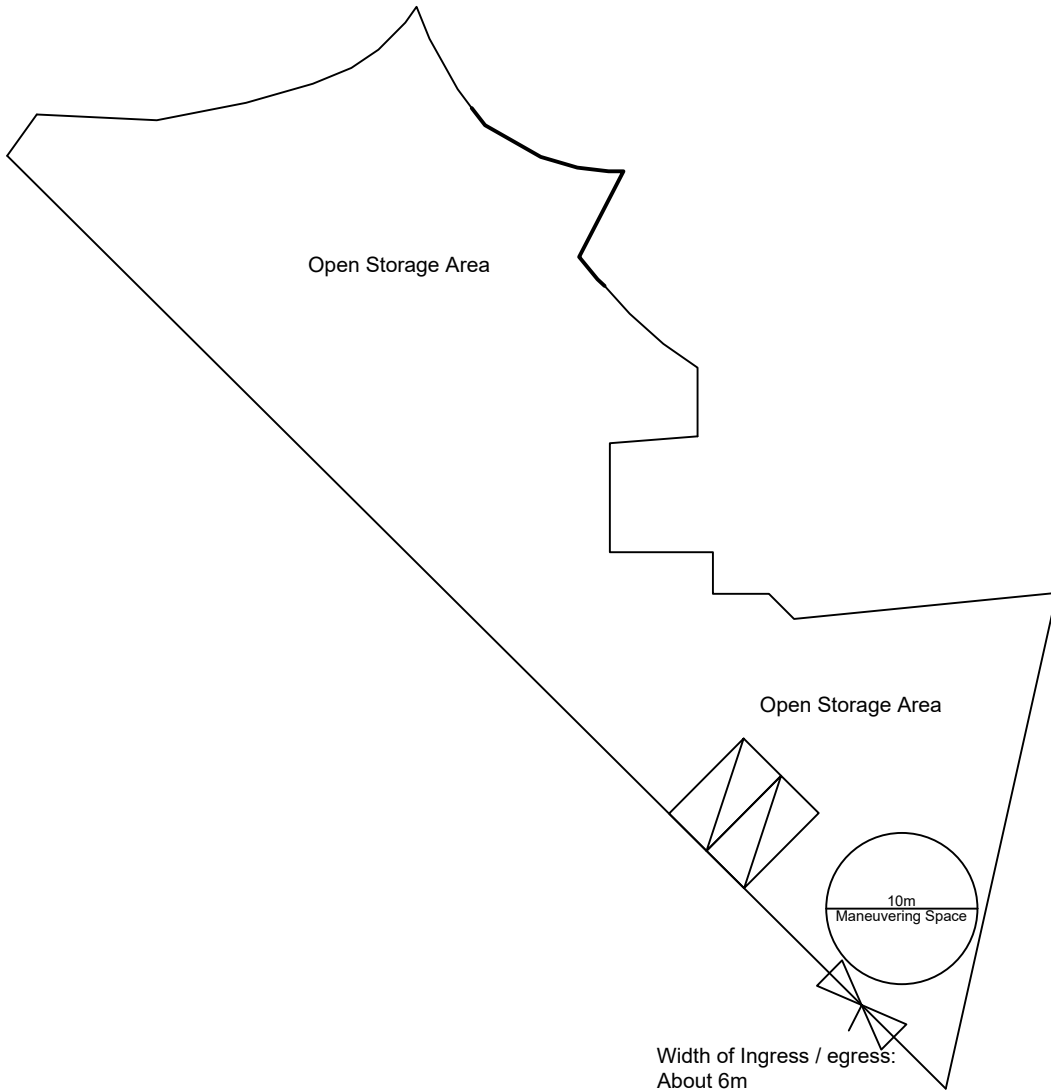
@A4

For Identification Only




Drawing No.:

1-01

LGV L/UL Space  
 Dimension: 7m x 3.5m  
 Unit(s): 2



Legend:

-  Ingress/egress (Width: About 6m)
-  LGV L/UL Space (Unit(s): 2)
-  Maneuvering Space

Total Area: 1,559.1 m<sup>2</sup> (About)

Appendix 2

Location: DD 107 Lot 1247 (Part),  
 1248 (Part), 1249 (Part), 1252 (Part)  
 and 1253 (Part)

OZP: S/YL-KTN/11  
 District: Kam Tin North  
 Zoning: Agriculture

Proposed Layout Plan

擬議佈局平面圖

擬議臨時露天存放建築機械及物料  
 (為期3年)及填土

Proposed Temporary Open Storage of  
 Construction Machinery and Materials  
 For a Period of 3 Years and Filling of Land

SCALE

1:500

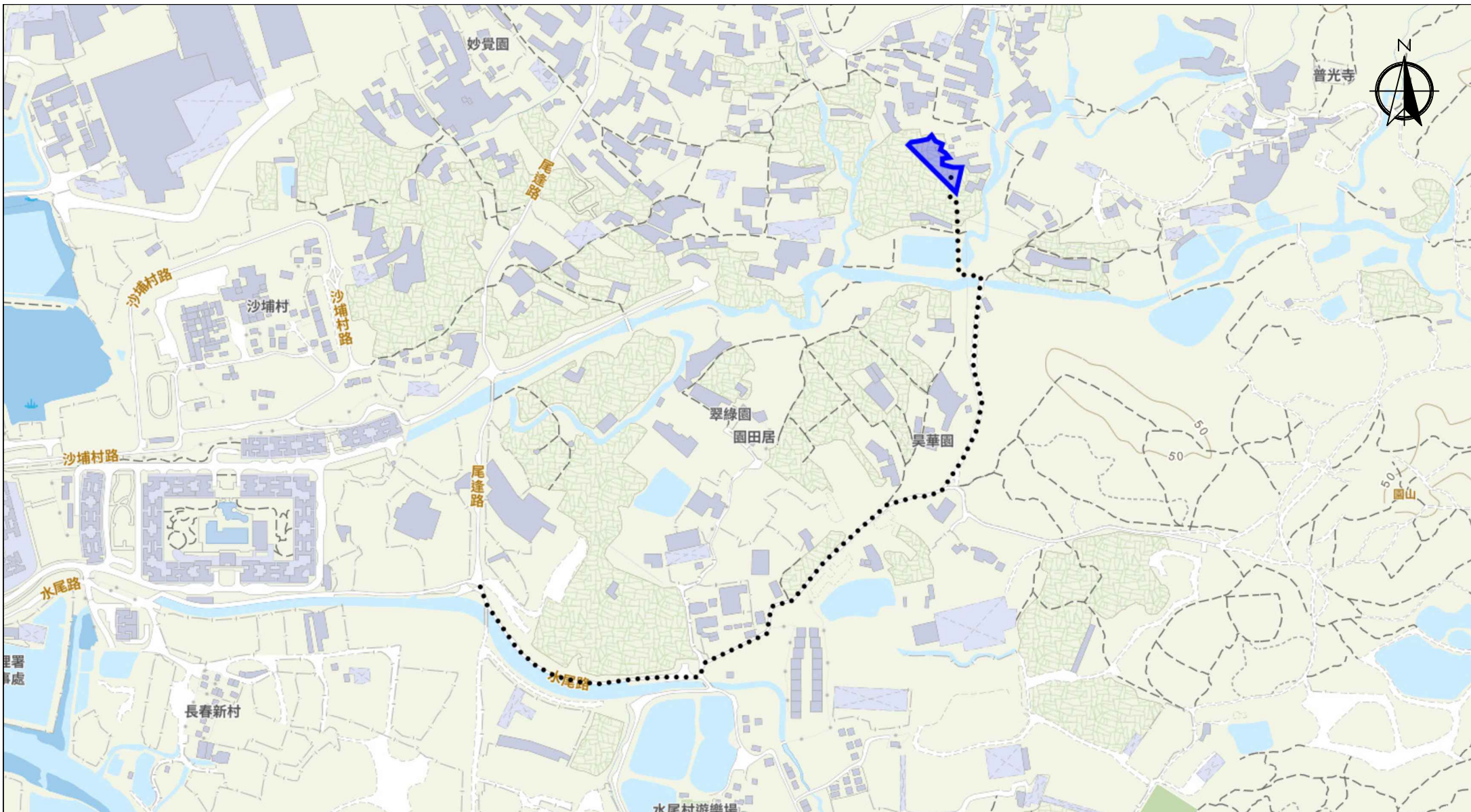
@A4

For Identification Only

Drawing No.:

Date: 23 May 2024

2-01



Scale: Undefined @A4

Captured from map.gov.hk on 25<sup>th</sup> April 2024

**Appendix 3**

Existing Vehicular Access

Location: D.D. 107 Lot 1247 (Part), 1248 (Part), 1249 (Part), 1252 (Part) and 1253 (Part)  
 OZP: S/YL-KTN/11  
 District: Kam Tin North  
 Zoning: Agriculture

Proposed Temporary Open Storage of Construction Machinery and Materials For a Period of 3 Years and Filling of Land

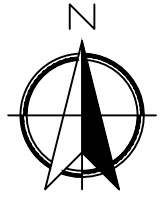
Width of Shui Mei Road: 3-6m (About)

Map Legend:  
 ●●●● Road Path  
 — Site Boundary

Drawing No.: 3-01

For Identification Only

Date: 25/04/2024



Existing Site Level: +14.2 mPD (About)  
 Proposed Site Level: +14.4 mPD (About)  
 Material of Filling: Concrete  
 Depth of Filling: 0.2m by Concrete (About)

Total Area: 1,559.1 m<sup>2</sup> (About)

Legend:

 Paved Area 平整範圍

Appendix 4

Location: DD 107 Lot 1247 (Part),  
 1248 (Part), 1249 (Part), 1252 (Part)  
 and 1253 (Part)

OZP: S/YL-KTN/11  
 District: Kam Tin North  
 Zoning: Agriculture

Date: 25 April 2024

Paved Area  
 平整位置圖

擬議臨時露天存放建築機械及物料  
 (為期3年)及填土

Proposed Temporary Open Storage of  
 Construction Machinery and Materials  
 For a Period of 3 Years and Filling of Land

SCALE

1:500

@A4

For Identification Only

Drawing No.:

4-01