

LOCATION OF THE APPLICATION SITE

APPLICATION SITE AREA : 14,106 m² (ABOUT)

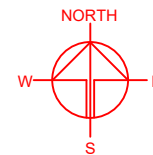
VEHICULAR ACCESS

ACCESSIBLE FROM SAN TAM ROAD VIA SHUI MEI ROAD
AND A LOCAL ACCESS

ACCESSIBLE FROM SHUI MEI
ROAD VIA A LOCAL ACCESS

長春新村
CHEUNG CHUN SAN TSUEN

APPLICATION SITE



SITE BOUNDARY FOR IDENTIFICATION PURPOSE ONLY.

LEGEND

 APPLICATION SITE

PLANNING CONSULTANT



PROJECT

PROPOSED TEMPORARY OPEN
STORAGE OF CONSTRUCTION
MATERIALS WITH ANCILLARY
FACILITIES FOR A PERIOD OF 3
YEARS

SITE LOCATION

LOTS 1749 RP, 1750A6 RP
(PART) AND 1905 RP (PART) IN
D.D. 107 AND ADJOINING
GOVERNMENT LAND, FUNG KAT
HEUNG, KAM TIN, YUEN LONG,
NEW TERRITORIES

SCALE

1 : 3000 @ A4

DRAWN BY	DATE
MN	17.7/2024

CHECKED BY	DATE

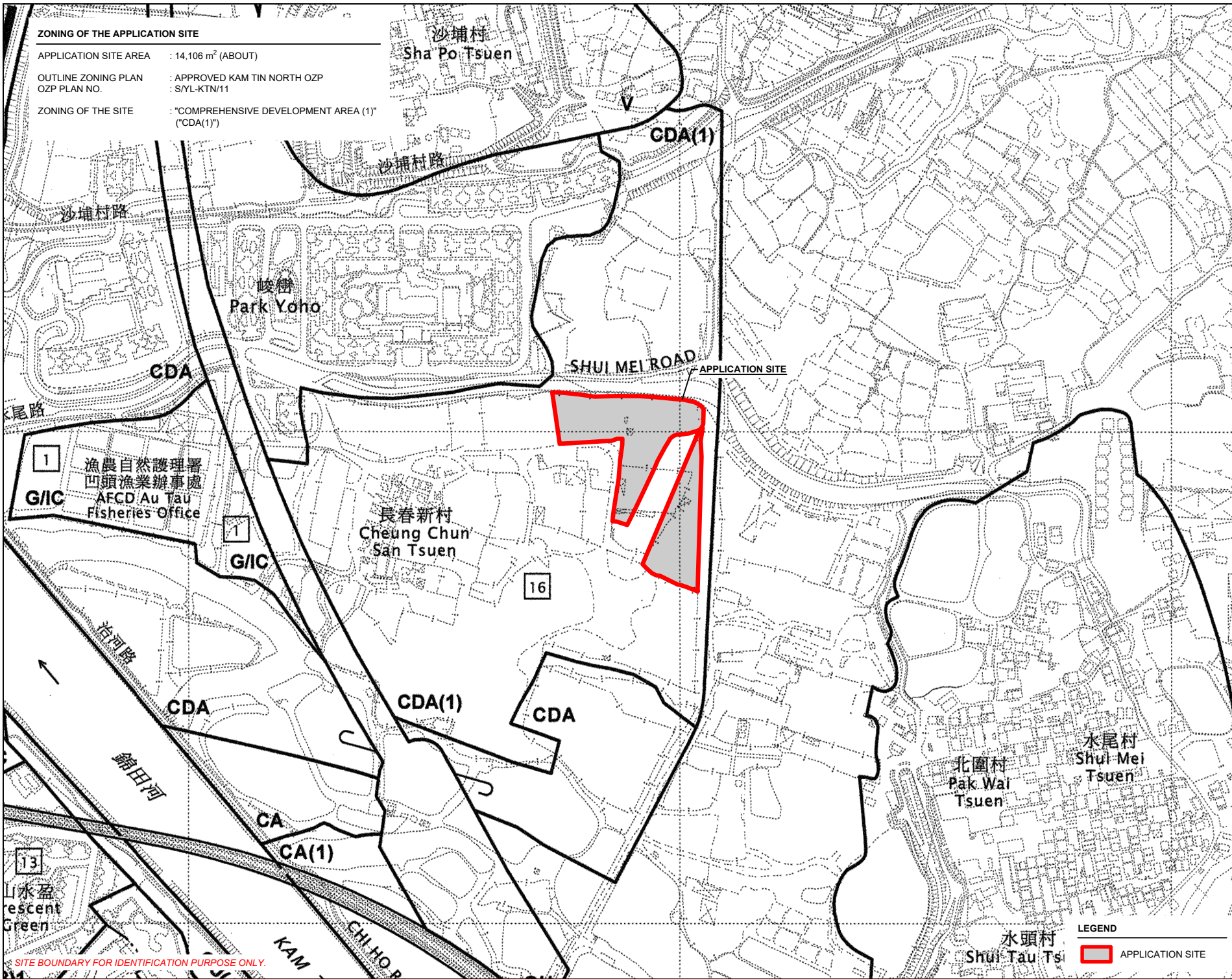
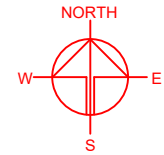
APPROVED BY	DATE

DWG. TITLE
LOCATION PLAN

DWG NO.	VER.
PLAN 1	001

ZONING OF THE APPLICATION SITE

APPLICATION SITE AREA : 14,106 m² (ABOUT)
 OUTLINE ZONING PLAN : APPROVED KAM TIN NORTH OZP
 OZP PLAN NO. : S/YL-KTN/11
 ZONING OF THE SITE : "COMPREHENSIVE DEVELOPMENT AREA (1)"
 ("CDA(1)")



SITE BOUNDARY FOR IDENTIFICATION PURPOSE ONLY.

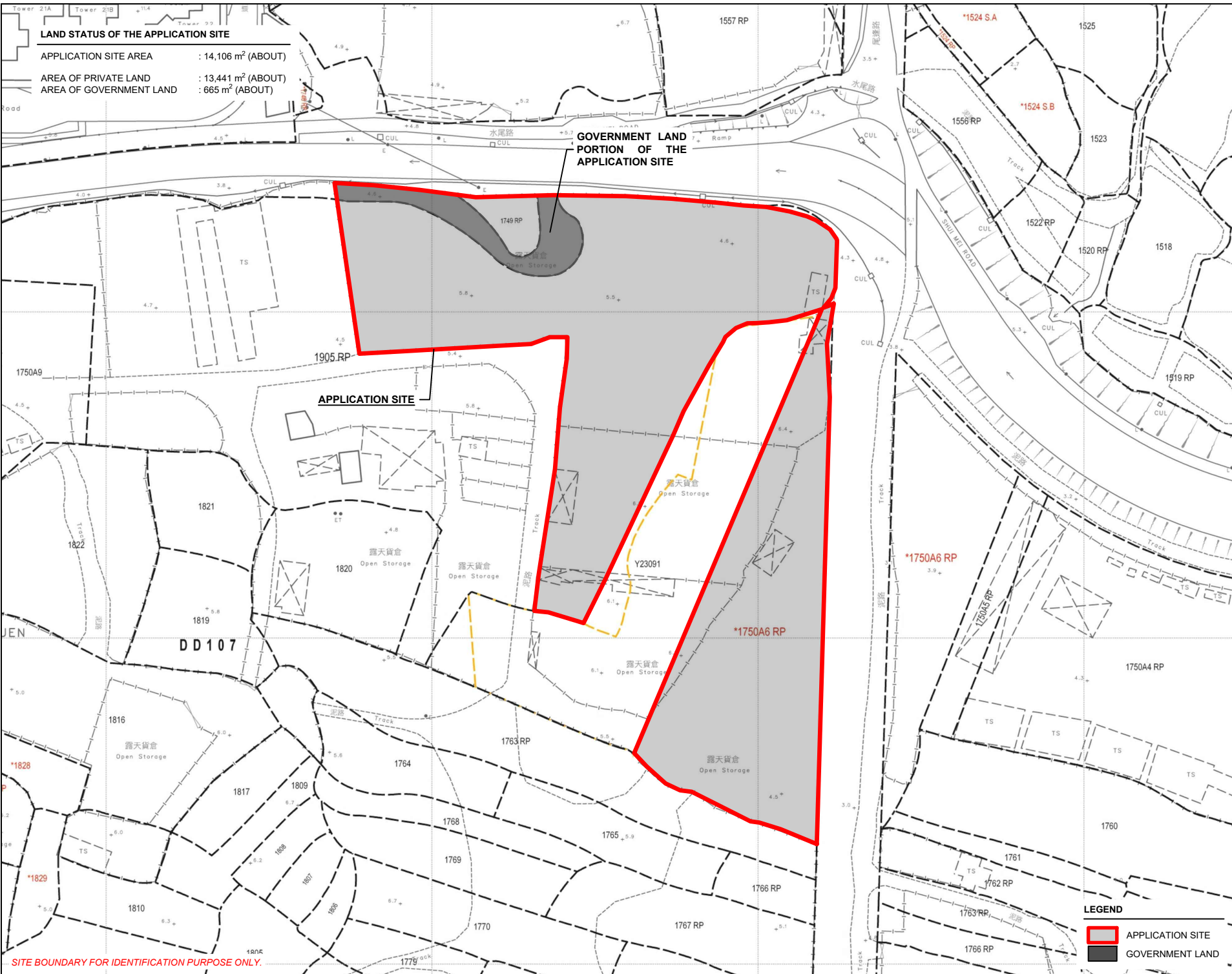
LEGEND
 APPLICATION SITE

PLANNING CONSULTANT
 R-Riches
 Property Consultants Ltd.

PROJECT
 PROPOSED TEMPORARY OPEN STORAGE OF CONSTRUCTION MATERIALS WITH ANCILLARY FACILITIES FOR A PERIOD OF 3 YEARS

SITE LOCATION
 LOTS 1749 RP, 1750A6 RP (PART) AND 1905 RP (PART) IN D.D. 107 AND ADJOINING GOVERNMENT LAND, FUNG KAT HEUNG, KAM TIN, YUEN LONG, NEW TERRITORIES

SCALE 1 : 5000 @ A4	
DRAWN BY MN	DATE 17.7.2024
REVISED BY	DATE
APPROVED BY	DATE
DWG. TITLE ZONING OF THE SITE	
DWG. NO. PLAN 2	VER. 001



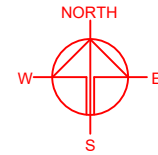
LAND STATUS OF THE APPLICATION SITE

APPLICATION SITE AREA : 14,106 m² (ABOUT)
 AREA OF PRIVATE LAND : 13,441 m² (ABOUT)
 AREA OF GOVERNMENT LAND : 665 m² (ABOUT)

GOVERNMENT LAND
 PORTION OF THE
 APPLICATION SITE

APPLICATION SITE

SITE BOUNDARY FOR IDENTIFICATION PURPOSE ONLY.



PLANNING CONSULTANT



PROJECT

PROPOSED TEMPORARY OPEN STORAGE OF CONSTRUCTION MATERIALS WITH ANCILLARY FACILITIES FOR A PERIOD OF 3 YEARS

SITE LOCATION

LOTS 1749 RP, 1750A6 RP (PART) AND 1905 RP (PART) IN D.D. 107 AND ADJOINING GOVERNMENT LAND, FUNG KAT HEUNG, KAM TIN, YUEN LONG, NEW TERRITORIES

SCALE

1 : 1500 @ A4

DRAWN BY

MN

DATE

17.7.2024

CHECKED BY

DATE

APPROVED BY

DATE

LEGEND

- APPLICATION SITE
- GOVERNMENT LAND

DWG. TITLE

LAND STATUS OF THE SITE

DWG. NO.

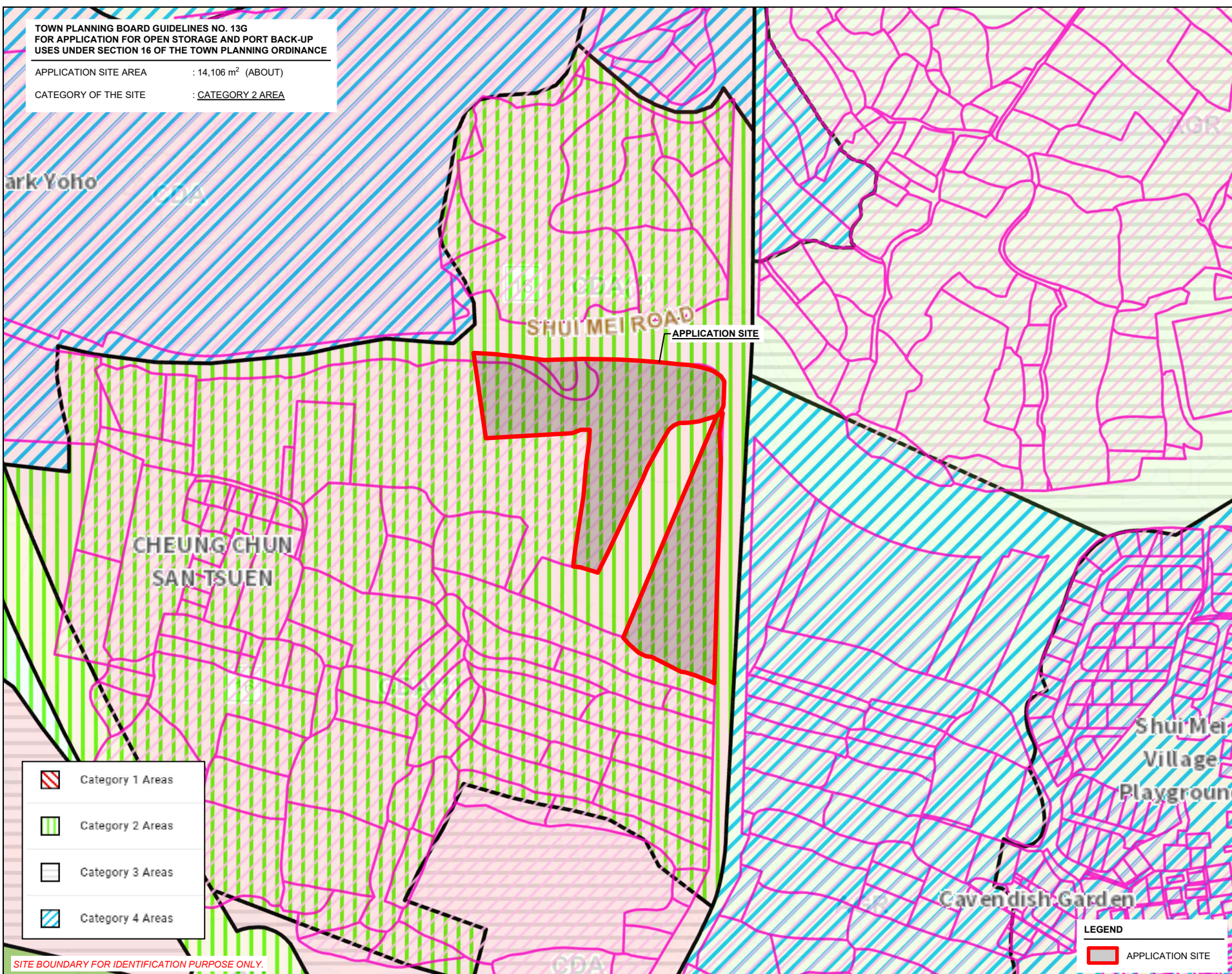
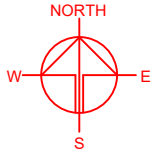
PLAN 3

VER.

001

**TOWN PLANNING BOARD GUIDELINES NO. 13G
FOR APPLICATION FOR OPEN STORAGE AND PORT BACK-UP
USES UNDER SECTION 16 OF THE TOWN PLANNING ORDINANCE**

APPLICATION SITE AREA : 14,106 m² (ABOUT)
CATEGORY OF THE SITE : CATEGORY 2 AREA



	Category 1 Areas
	Category 2 Areas
	Category 3 Areas
	Category 4 Areas

LEGEND

	APPLICATION SITE
--	------------------

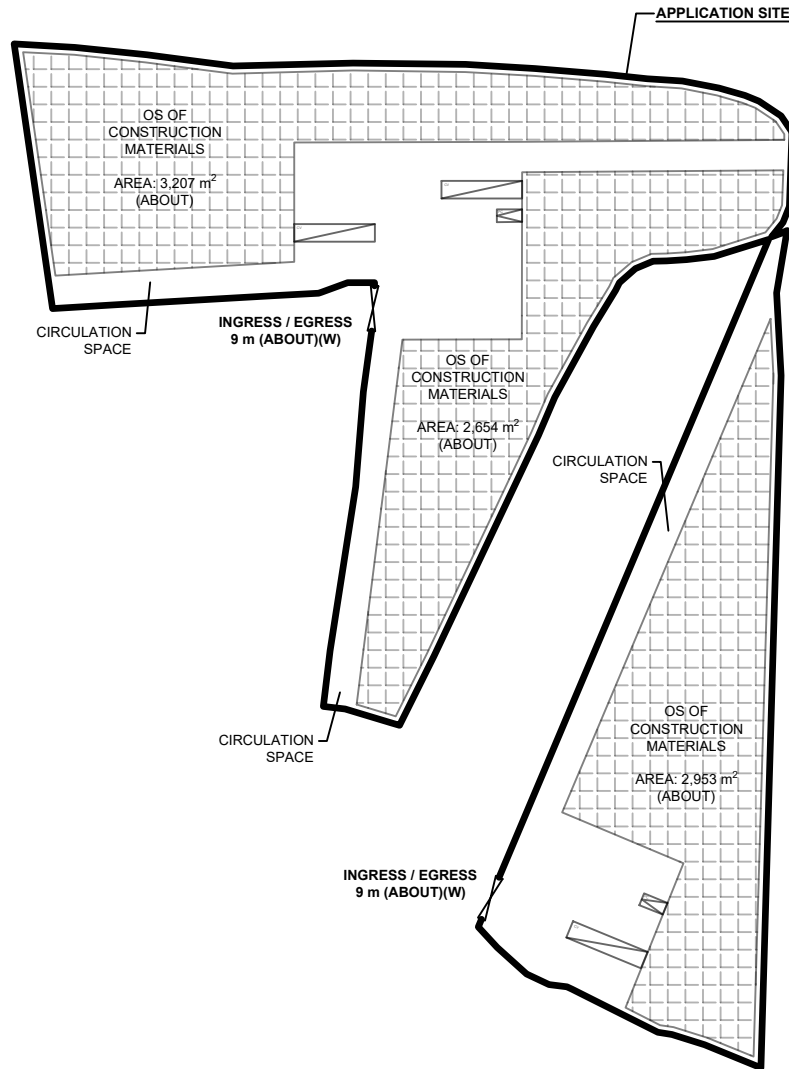
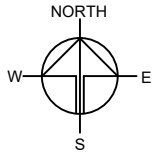
SITE BOUNDARY FOR IDENTIFICATION PURPOSE ONLY.

PLANNING CONSULTANT	
PROJECT	
PROPOSED TEMPORARY OPEN STORAGE OF CONSTRUCTION MATERIALS WITH ANCILLARY FACILITIES FOR A PERIOD OF 3 YEARS	
SITE LOCATION	
LOTS 1749 RP, 1750A6 RP (PART) AND 1905 RP (PART) IN D.D. 107 AND ADJOINING GOVERNMENT LAND, FUNG KAT HEUNG, KAM TIN, YUEN LONG, NEW TERRITORIES	
SCALE	
1 : 3000 @ A4	
DRAWN BY	DATE
MN	17.7.2024
CHECKED BY	DATE
APPROVED BY	DATE
DWG. TITLE	
TPB PG-NO. 13G	
DWG NO.	VER.
PLAN 4	001

DEVELOPMENT PARAMETERS

APPLICATION SITE AREA : 14,106 m² (ABOUT)
 COVERED AREA : NOT APPLICABLE
 UNCOVERED AREA : 14,106 m² (ABOUT)

NO STRUCTURE IS PROPOSED AT THE APPLICATION SITE.



PARKING AND LOADING / UNLOADING PROVISIONS

NO. OF PRIVATE CAR PARKING SPACE : 2
 DIMENSIONS OF PARKING SPACE : 5 m (L) x 2.5 m (W)

NO. OF L/LU SPACE FOR CONTAINER VEHICLE : 3
 DIMENSION OF L/LU SPACE : 16 m (L) X 3.5 m (W)

LEGEND

- APPLICATION SITE
- OPEN STORAGE AREA
- INGRESS / EGRESS
- PARKING SPACE (PC)
- L/LU SPACE (CV)

PLANNING CONSULTANT



PROJECT

PROPOSED TEMPORARY OPEN STORAGE OF CONSTRUCTION MATERIALS WITH ANCILLARY FACILITIES FOR A PERIOD OF 3 YEARS

SITE LOCATION

LOTS 1749 RP, 1750A6 RP (PART) AND 1905 RP (PART) IN D.D. 107 AND ADJOINING GOVERNMENT LAND, FUNG KAT HEUNG, KAM TIN, YUEN LONG, NEW TERRITORIES

SCALE

1 : 1500 @ A4

DRAWN BY: MN DATE: 17.7.2024

CHECKED BY: DATE:

APPROVED BY: DATE:

DWG. TITLE

LAYOUT PLAN

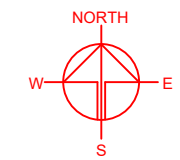
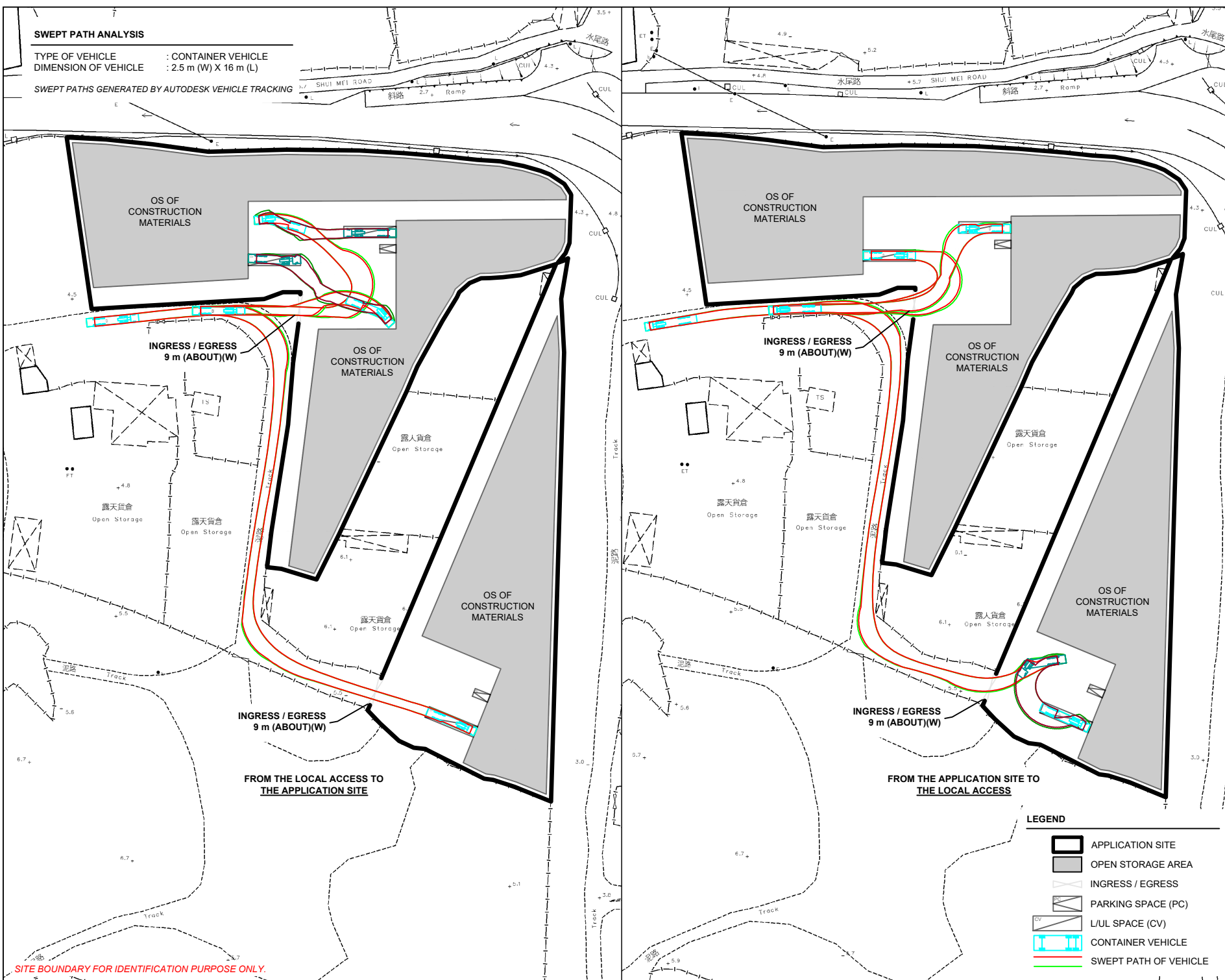
DWG NO. VER.

PLAN 5 001

SWEPT PATH ANALYSIS

TYPE OF VEHICLE : CONTAINER VEHICLE
 DIMENSION OF VEHICLE : 2.5 m (W) X 16 m (L)

SWEPT PATHS GENERATED BY AUTODESK VEHICLE TRACKING



PLANNING CONSULTANT

PROJECT
 PROPOSED TEMPORARY OPEN STORAGE OF CONSTRUCTION MATERIALS WITH ANCILLARY FACILITIES FOR A PERIOD OF 3 YEARS

SITE LOCATION
 LOTS 1749 RP, 1750A6 RP (PART) AND 1905 RP (PART) IN D.D. 107 AND ADJOINING GOVERNMENT LAND, FUNG KAT HEUNG, KAM TIN, YUEN LONG, NEW TERRITORIES

LEGEND

- APPLICATION SITE
- OPEN STORAGE AREA
- INGRESS / EGRESS
- PARKING SPACE (PC)
- L/U/L SPACE (CV)
- CONTAINER VEHICLE
- SWEPT PATH OF VEHICLE

SCALE
 1 : 1500 @ A4

DRAWN BY MN	DATE 17.7.2024
CHECKED BY	DATE
APPROVED BY	DATE
DWG. TITLE SWEPT PATH ANALYSIS	
DWG. NO. PLAN 6	VER. 001

SITE BOUNDARY FOR IDENTIFICATION PURPOSE ONLY.