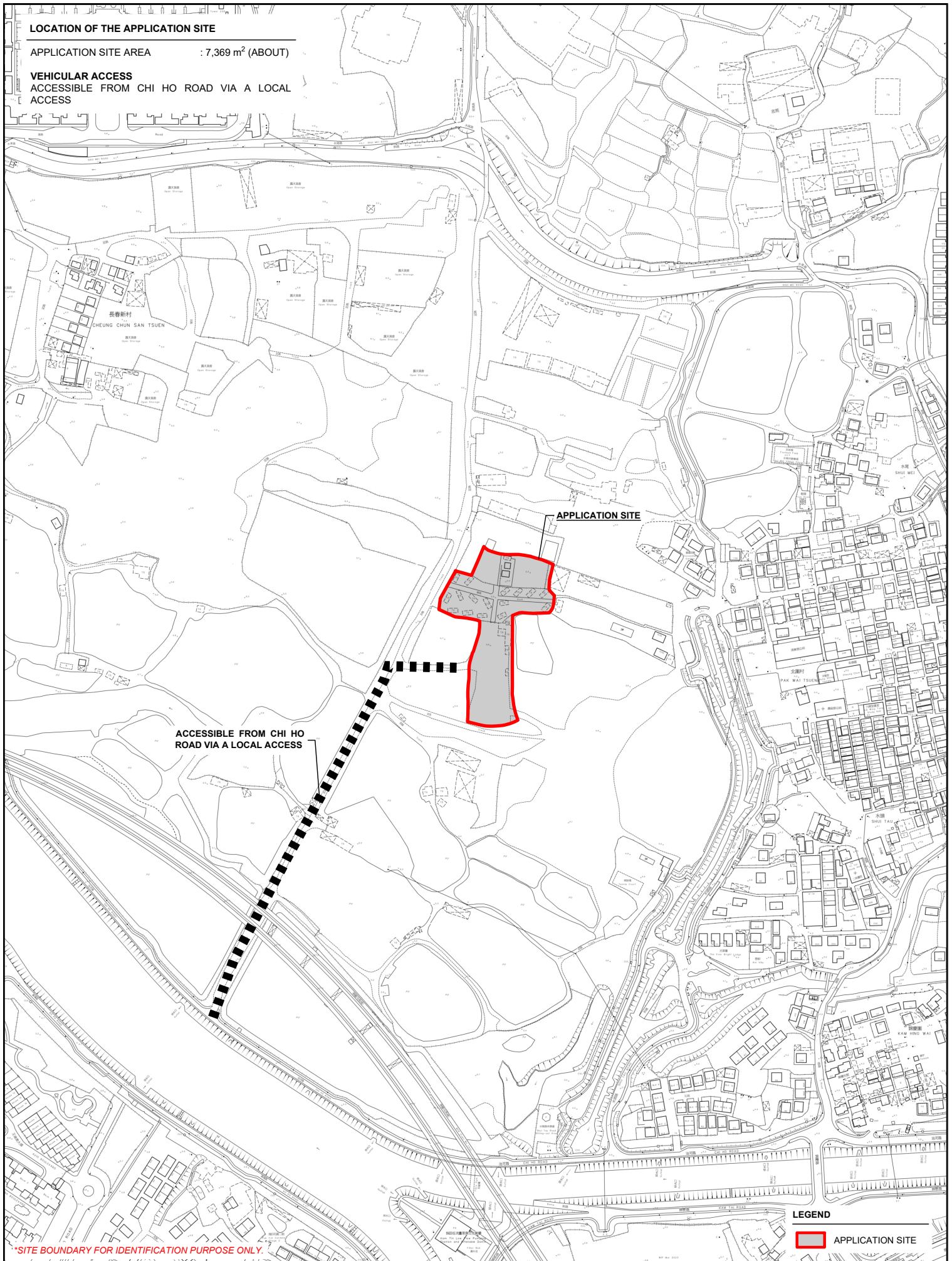


LOCATION OF THE APPLICATION SITE

APPLICATION SITE AREA : 7,369 m² (ABOUT)

VEHICULAR ACCESS
ACCESSIBLE FROM CHI HO ROAD VIA A LOCAL ACCESS



APPLICATION SITE

ACCESSIBLE FROM CHI HO ROAD VIA A LOCAL ACCESS

LEGEND

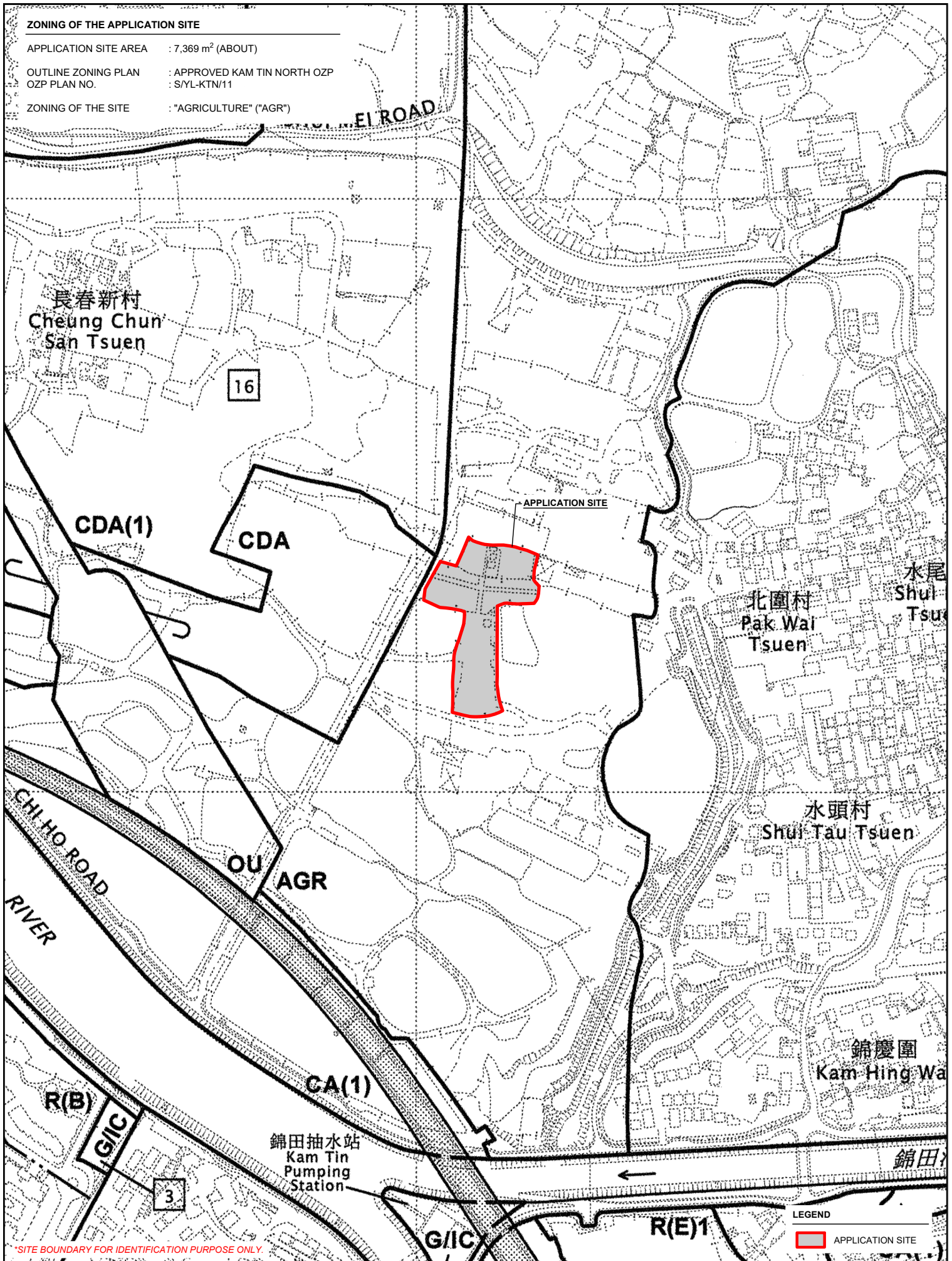
 APPLICATION SITE

*SITE BOUNDARY FOR IDENTIFICATION PURPOSE ONLY.

	<p>PROJECT PROPOSED TEMPORARY HOLIDAY CAMP, PLACE OF RECREATION, SPORTS OR CULTURE, BARBECUE SITE AND EATING PLACE WITH ANCILLARY FACILITIES FOR A PERIOD OF 3 YEARS AND ASSOCIATED FILLING OF LAND</p>	<p>ADDRESS VARIOUS LOTS IN D.D. 107 AND D.D. 109, FUNG KAT HEUNG, KAM TIN, YUEN LONG, NEW TERRITORIES</p>	SCALE 1 : 4000 @ A4	TITLE LOCATION PLAN	
			<p>DRAWN BY MN</p>	<p>DATE 4.7.2024</p>	

ZONING OF THE APPLICATION SITE

APPLICATION SITE AREA : 7,369 m² (ABOUT)
 OUTLINE ZONING PLAN : APPROVED KAM TIN NORTH OZP
 OZP PLAN NO. : SYL-KTN/11
 ZONING OF THE SITE : "AGRICULTURE" ("AGR")



*SITE BOUNDARY FOR IDENTIFICATION PURPOSE ONLY.

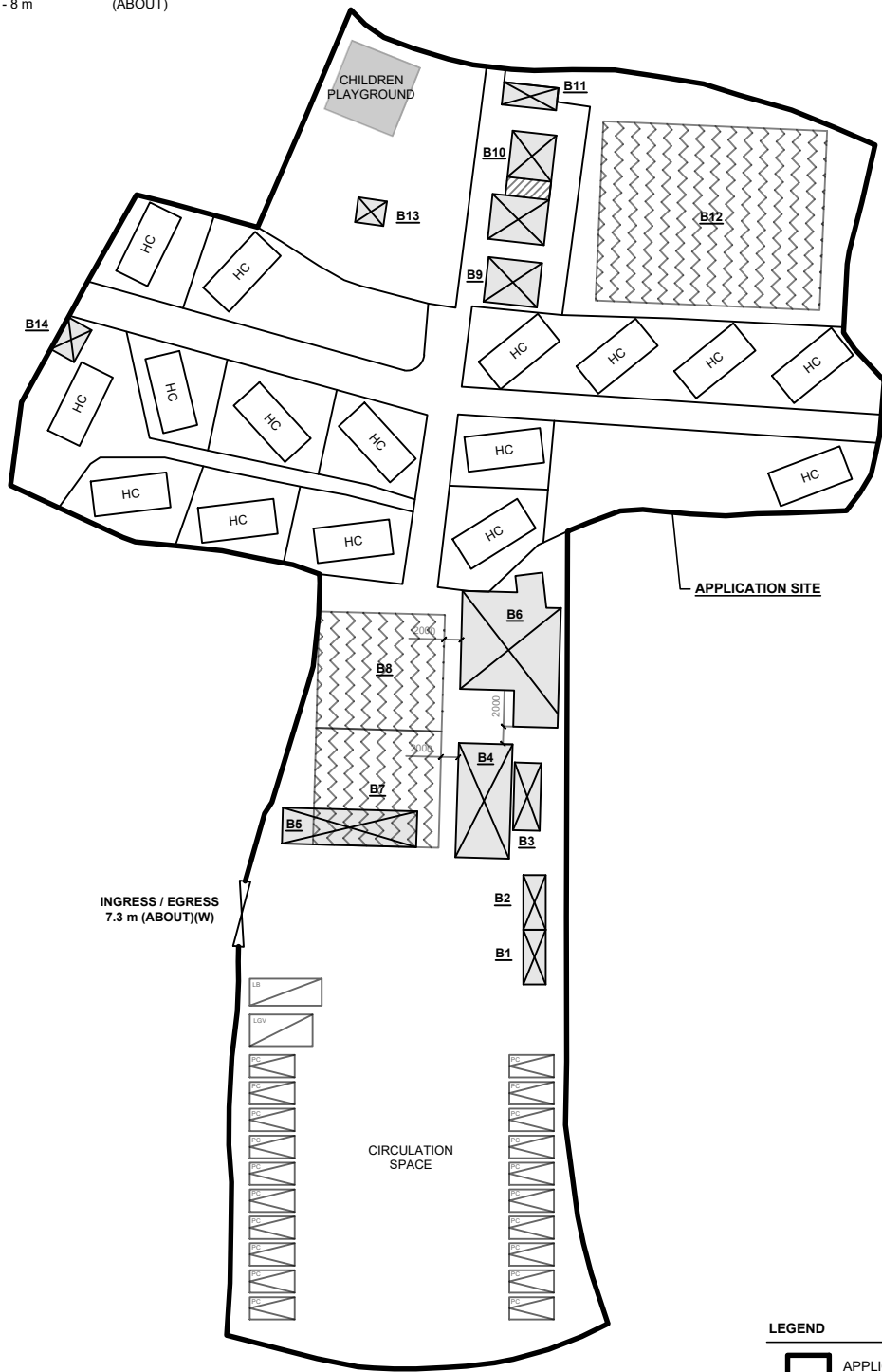
PLANNING CONSULTANT 	PROJECT PROPOSED TEMPORARY HOLIDAY CAMP, PLACE OF RECREATION, SPORTS OR CULTURE, BARBECUE SITE AND EATING PLACE WITH ANCILLARY FACILITIES FOR A PERIOD OF 3 YEARS AND ASSOCIATED FILLING OF LAND	ADDRESS VARIOUS LOTS IN D.D. 107 AND D.D. 109, FUNG KAT HEUNG, KAM TIN, YUEN LONG, NEW TERRITORIES	SCALE 1 : 4000 @ A4	TITLE ZONING PLAN	
			DRAWN BY MN	DATE 4.7.2024	

DEVELOPMENT PARAMETERS

APPLICATION SITE AREA	: 7,369 m ²	(ABOUT)
COVERED AREA	: 1,305 m ² + 544 m ²	(ABOUT)
UNCOVERED AREA	: 5,520 m ²	(ABOUT)
PLOT RATIO	: 0.25	(ABOUT)
SITE COVERAGE	: 25 %	(ABOUT)
NO. OF STRUCTURE	: 14 + 16 (HOLIDAY CAMPS)	
DOMESTIC GFA	: NOT APPLICABLE	
NON-DOMESTIC GFA	: 1,305 m ² + 544 m ²	(ABOUT)
TOTAL GFA	: 1,305 m ² + 544 m ²	(ABOUT)
BUILDING HEIGHT	: 2.4 m - 8 m	(ABOUT)
NO. OF STOREY	: 1	

DETAILS OF HOLIDAY CAMP

NO. OF HOLIDAY CAMP	: 16	
COVERED AREA OF CAMP	: 34 m ² EACH	(ABOUT)
GFA OF CAMP	: 34 m ² EACH	(ABOUT)
TOTAL COVERED AREA OF CAMP	: 544 m ²	(ABOUT)
TOTAL GFA OF CAMP	: 544 m ²	(ABOUT)
BUILDING HEIGHT	: 4.5 m	(ABOUT)



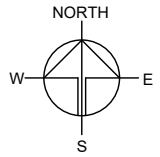
INGRESS / EGRESS
7.3 m (ABOUT)(W)

PARKING PROVISIONS

NO. OF PRIVATE CAR PARKING SPACE	: 20
DIMENSION OF PARKING SPACE	: 5 m (L) X 2.5 m (W)
NO. OF L/UL SPACE FOR LIGHT GOODS VEHICLE	: 1
DIMENSION OF L/UL SPACE	: 7 m (L) X 3.5 m (W)
NO. OF L/UL SPACE FOR LIGHT BUS	: 1
DIMENSION OF L/UL SPACE	: 8 m (L) X 3 m (W)

LEGEND

- APPLICATION SITE
- STRUCTURE (ENCLOSED)
- STRUCTURE (RETRACTABLE MARQUEE)
- STRUCTURE (CANOPY)
- HOLIDAY CAMP
- PARKING SPACE (PRIVATE CAR)
- L/UL SPACE (LIGHT BUS)
- L/UL SPACE (LIGHT GOODS VEHICLE)
- INGRESS / EGRESS



STRUCTURE	USE	COVERED AREA	GFA	BUILDING HEIGHT
B1	STORE ROOM	15 m ² (ABOUT)	15 m ² (ABOUT)	3.1 m (ABOUT)(1-STOREY)
B2	STORE ROOM	15 m ² (ABOUT)	15 m ² (ABOUT)	2.8 m (ABOUT)(1-STOREY)
B3	STORE ROOM	23 m ² (ABOUT)	23 m ² (ABOUT)	3 m (ABOUT)(1-STOREY)
B4	RECEPTION & OFFICE	80 m ² (ABOUT)	80 m ² (ABOUT)	3.5 m (ABOUT)(1-STOREY)
B5 [#]	WASHROOM	14 m ² (ABOUT) [#]	14 m ² (ABOUT) [#]	3 m (ABOUT)(1-STOREY)
B6	EATING PLACE	145 m ² (ABOUT)	145 m ² (ABOUT)	4.8 m (ABOUT)(1-STOREY)
B7*	RAIN SHELTER FOR BARBECUE ACTIVITIES	182 m ² (ABOUT)	182 m ² (ABOUT)	4 m (ABOUT)(1-STOREY)
B8*	RAIN SHELTER FOR BARBECUE ACTIVITIES	182 m ² (ABOUT)	182 m ² (ABOUT)	4 m (ABOUT)(1-STOREY)
B9	STORE ROOM	30 m ² (ABOUT)	30 m ² (ABOUT)	3 m (ABOUT)(1-STOREY)
B10	FS PUMP ROOM, PLAY ROOM AND RAIN SHELTER RECREATIONAL ACTIVITIES	76 m ² (ABOUT)	76 m ² (ABOUT)	4 m (ABOUT)(1-STOREY)
B11	WASHROOM	19 m ² (ABOUT)	19 m ² (ABOUT)	3.1 m (ABOUT)(1-STOREY)
B12*	RAIN SHELTER FOR RECREATIONAL, SPORTS OR CULTURAL ACTIVITIES	500 m ² (ABOUT)	500 m ² (ABOUT)	8 m (ABOUT)(1-STOREY)
B13	WINDMILL (DECORATION)	9 m ² (ABOUT)	9 m ² (ABOUT)	5 m (ABOUT)(1-STOREY)
B14	STORE ROOM	15 m ² (ABOUT)	15 m ² (ABOUT)	2.4 m (ABOUT)(1-STOREY)
TOTAL		1,305 m² (ABOUT)	1,305 m² (ABOUT)	

[#] PORTION OF STRUCTURE B5 IS COVERED BY STRUCTURE B7, HENCE, THE COVERED AREA (I.E. 14 m²) OF B5 IS THE AREA NOT COVERED BY STRUCTURE B7.

* STRUCTURES B7, B8 AND B12 ARE RETRACTABLE MARQUEES.

PLANNING CONSULTANT



PROJECT

PROPOSED TEMPORARY HOLIDAY CAMP, PLACE OF RECREATION, SPORTS OR CULTURE, BARBECUE SITE AND EATING PLACE WITH ANCILLARY FACILITIES FOR A PERIOD OF 3 YEARS AND ASSOCIATED FILLING OF LAND

SITE LOCATION

VARIOUS LOTS IN D.D. 107 AND D.D. 109, FUNG KAT HEUNG, KAM TIN, YUEN LONG, NEW TERRITORIES

SCALE

-

DRAWN BY	DATE
MN	28.6.2024

CHECKED BY	DATE

APPROVED BY	DATE

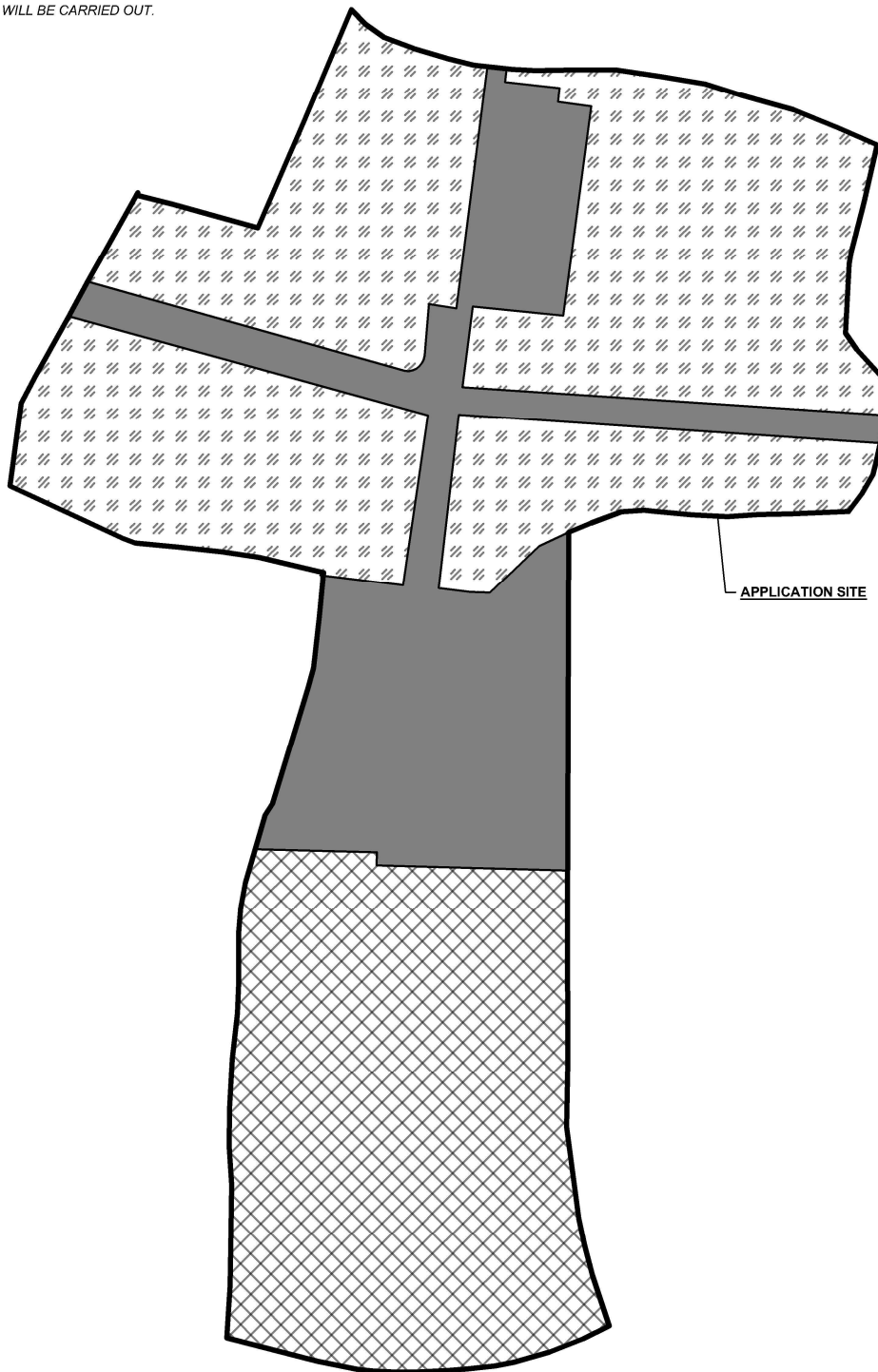
DWG. TITLE
DETAILS OF STRUCTURES

DWG NO.	VER.
PLAN 5	001

EXISTING CONDITION OF THE APPLICATION SITE

APPLICATION SITE AREA	: 7,369 m ²	(ABOUT)
EXISTING HARD-PAVED AREA	: 1,703 m ²	(ABOUT)
DEPTH OF LAND FILLING	: NOT MORE THAN 0.2 m	
PROPOSED SITE LEVELS	: +5.4 mPD TO +5.6 mPD	(ABOUT)
MATERIAL OF LAND FILLING	: CONCRETE	
PURPOSE OF LAND FILLING	: SITE FORMATION OF STRUCTURE AND CIRCULATION SPACE	
AREA COVERED BY GRAVEL	: 2,110 m ²	(ABOUT)
PURPOSE OF COVERING BY GRAVEL	: PARKING AND LOADING / UNLOADING PURPOSES	
AREA OF LAWN	: 3,556 m ²	(ABOUT)
PURPOSE OF LAWN AREA	: HOLIDAY CAMP, OPEN SPACE AND FOR RECREATIONAL, SPORTS OR CULTURAL ACTIVITIES	

NO FURTHER FILLING OF LAND WILL BE CARRIED OUT.



APPLICATION SITE

LEGEND

	APPLICATION SITE
	HARD PAVED AREA
	AREA COVERED BY GRAVEL
	LAWN AREA

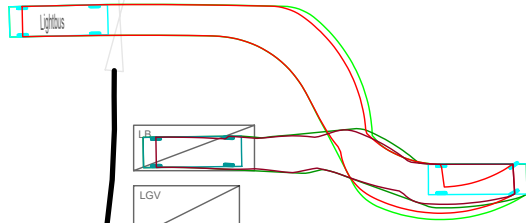
PLANNING CONSULTANT 	PROJECT PROPOSED TEMPORARY HOLIDAY CAMP, PLACE OF RECREATION, SPORTS OR CULTURE, BARBECUE SITE AND EATING PLACE WITH ANCILLARY FACILITIES FOR A PERIOD OF 3 YEARS AND ASSOCIATED FILLING OF LAND	ADDRESS VARIOUS LOTS IN D.D. 107 AND D.D. 109, FUNG KAT HEUNG, KAM TIN, YUEN LONG, NEW TERRITORIES	SCALE 1 : 800 @ A4	TITLE LAND FILLING AREA		
			DRAWN BY MN	DATE 5.8.2024	DWG NO. PLAN 6	

SWEPT PATH ANALYSIS

TYPE OF VEHICLE : LIGHT BUS
 DIMENSION OF VEHICLE : 2 m (W) X 6.5 m (L)

SWEPT PATHS GENERATED BY AUTODESK VEHICLE TRACKING

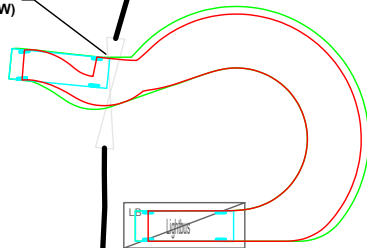
INGRESS / EGRESS
 7.3 m (ABOUT)(W)



FROM THE LOCAL ACCESS TO
 THE APPLICATION SITE

APPLICATION SITE

INGRESS / EGRESS
 7.3 m (ABOUT)(W)



FROM THE APPLICATION SITE
 TO THE LOCAL ACCESS

APPLICATION SITE

LEGEND

- APPLICATION SITE
- STRUCTURE
- PARKING SPACE (PC)
- L/U/L SPACE (LGV)
- L/U/L SPACE (LB)
- INGRESS / EGRESS
- LIGHT BUS
- SWEEP PATH OF VEHICLE

*SITE BOUNDARY FOR IDENTIFICATION PURPOSE ONLY.

PLANNING CONSULTANT



PROJECT

PROPOSED TEMPORARY HOLIDAY CAMP, PLACE OF RECREATION, SPORTS OR CULTURE, BARBECUE SITE AND EATING PLACE WITH ANCILLARY FACILITIES FOR A PERIOD OF 3 YEARS AND ASSOCIATED FILLING OF LAND

ADDRESS

VARIOUS LOTS IN D.D. 107 AND D.D. 109, FUNG KAT HEUNG, KAM TIN, YUEN LONG, NEW TERRITORIES

SCALE
 1 : 500 @ A4

DRAWN BY
 MN

DATE
 11.7.2024

REVISED BY

DATE

TITLE
 SWEEP PATH ANALYSIS (LB)

DWG NO.
 PLAN 7

VER.
 001

