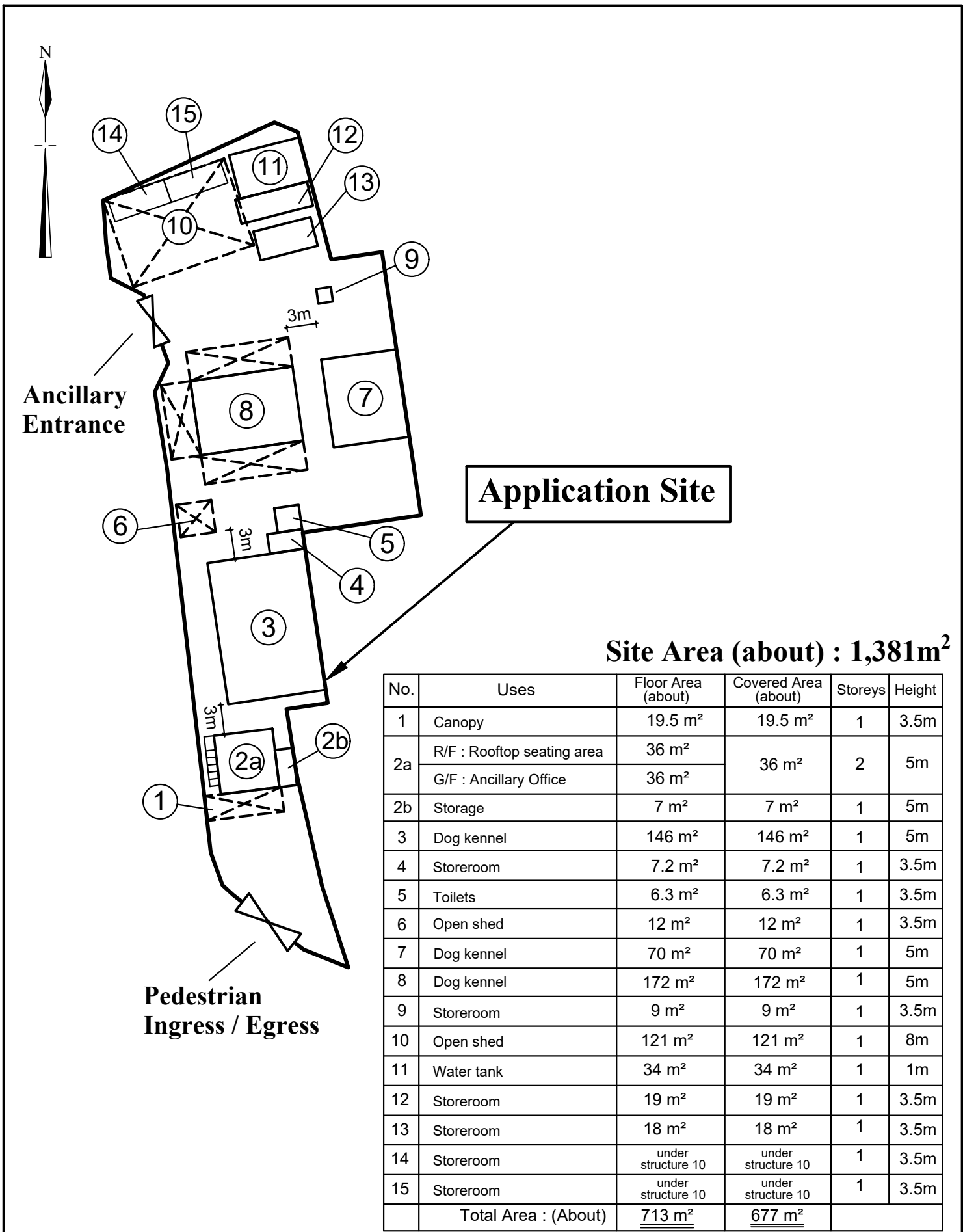


Application Site

Access Roads

Extracted from Approved Kam Tin North Outline Zoning Plan No. S/YL-KTN/11

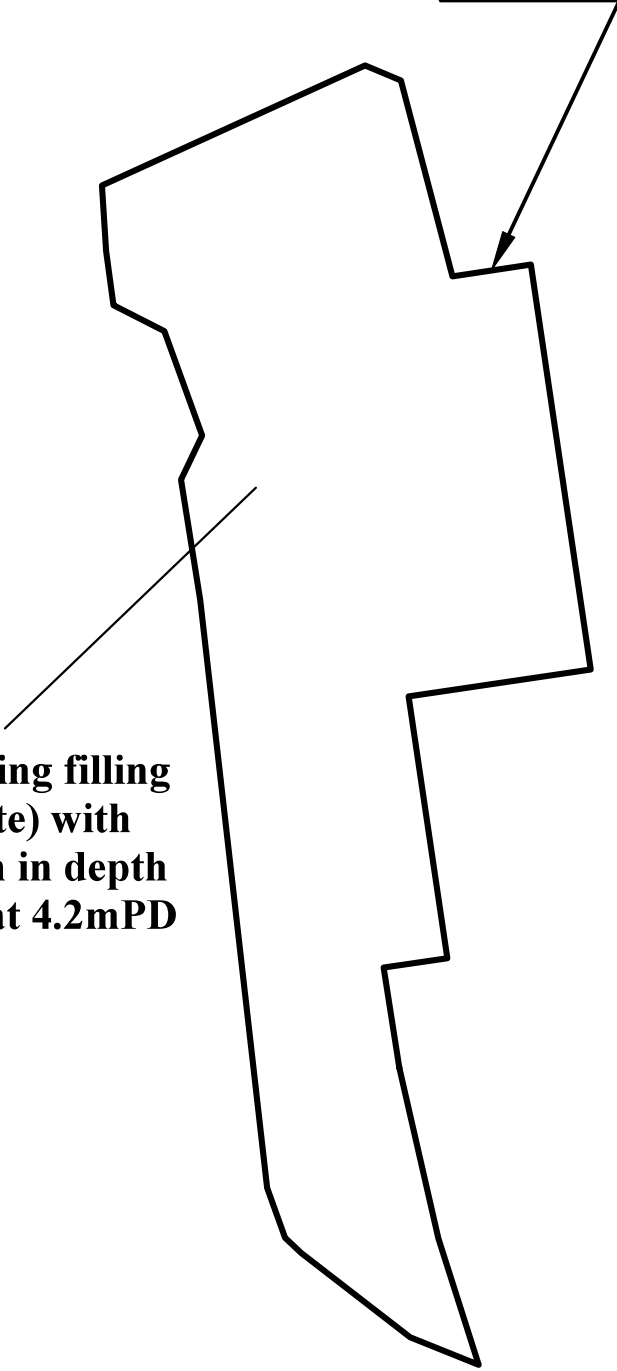
<p>Not to Scale</p>	<p>Location Plan</p>	<p>Goldrich Planners & Surveyors Ltd.</p>
<p>September 2024</p>	<p>Lots 1493 (part), 1500 (part) in DD. 107 and adjoining government land Kam Tin North, New Territories</p>	<p>Plan 1 (P 23044)</p>



1:500	Layout Plan	Goldrich Planners & Surveyors Ltd.
October 2024	Lots 1493 (part), 1500 (part) in DD. 107 and adjoining government land Kam Tin North, New Territories	Plan 3 (P 23044)



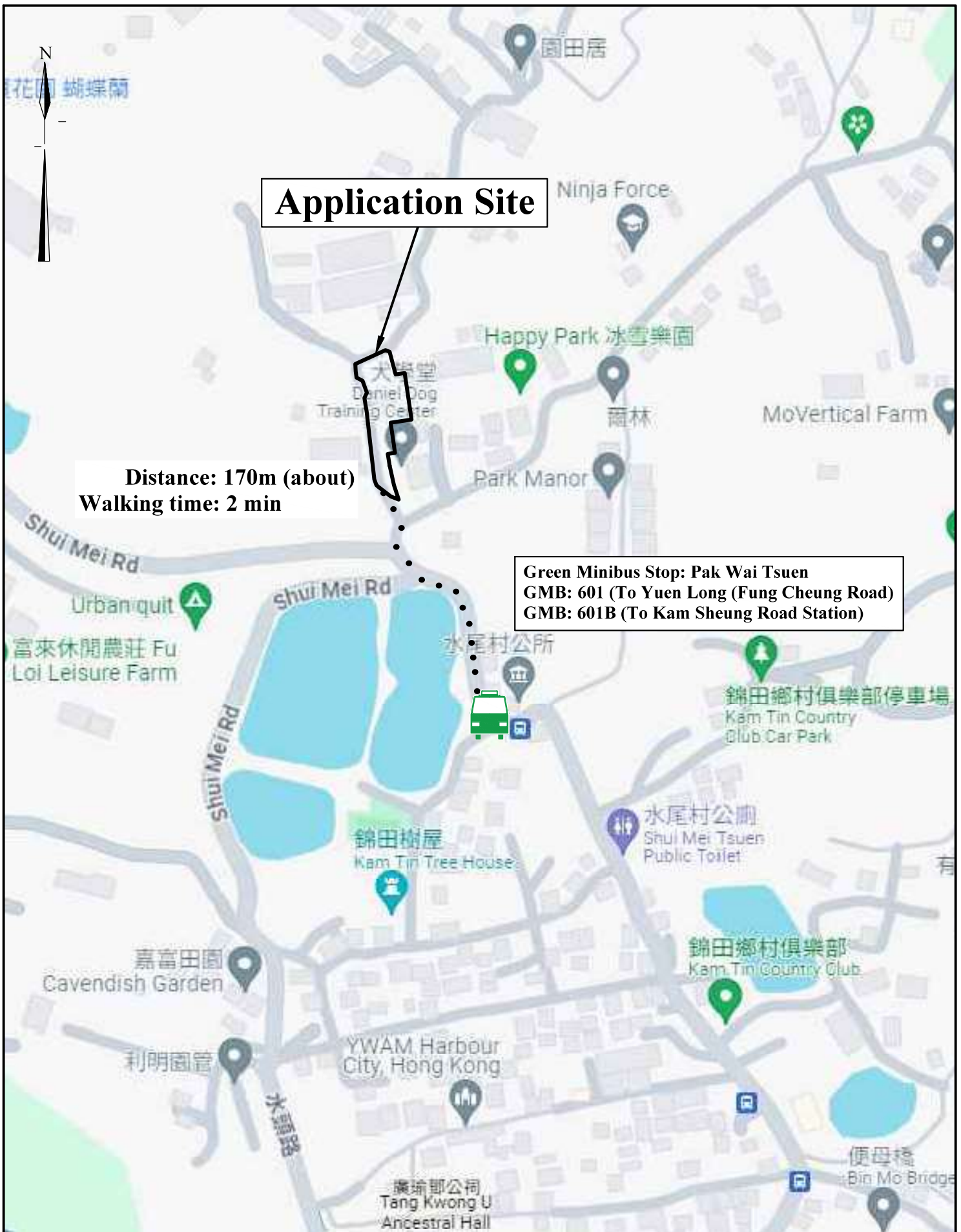
Application Site



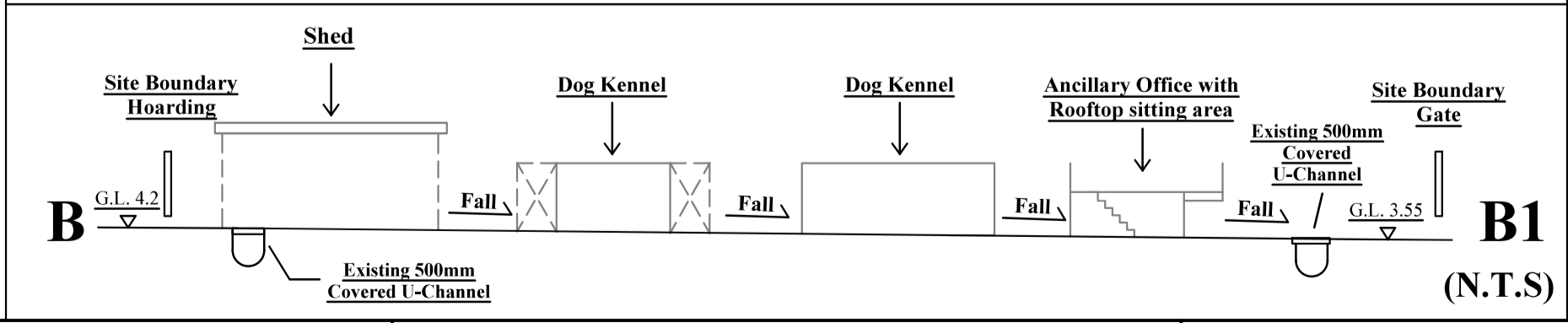
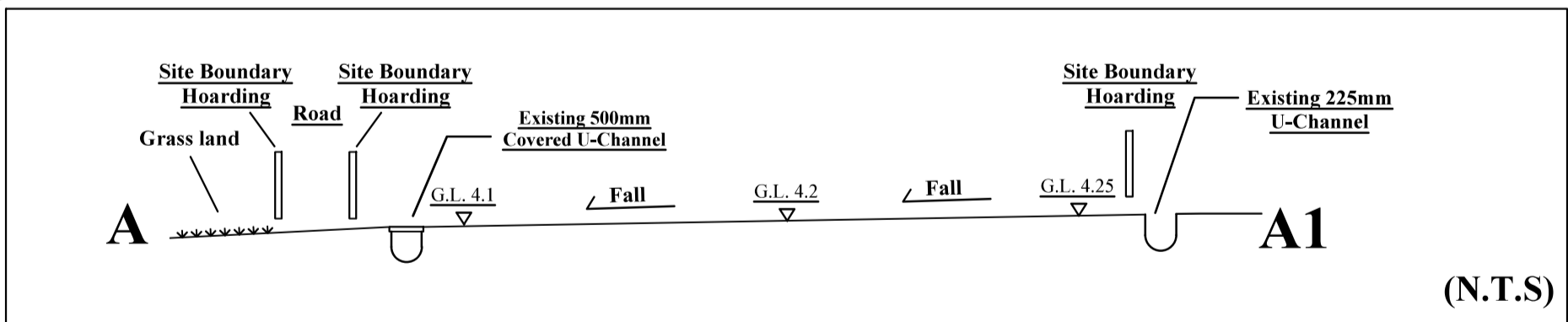
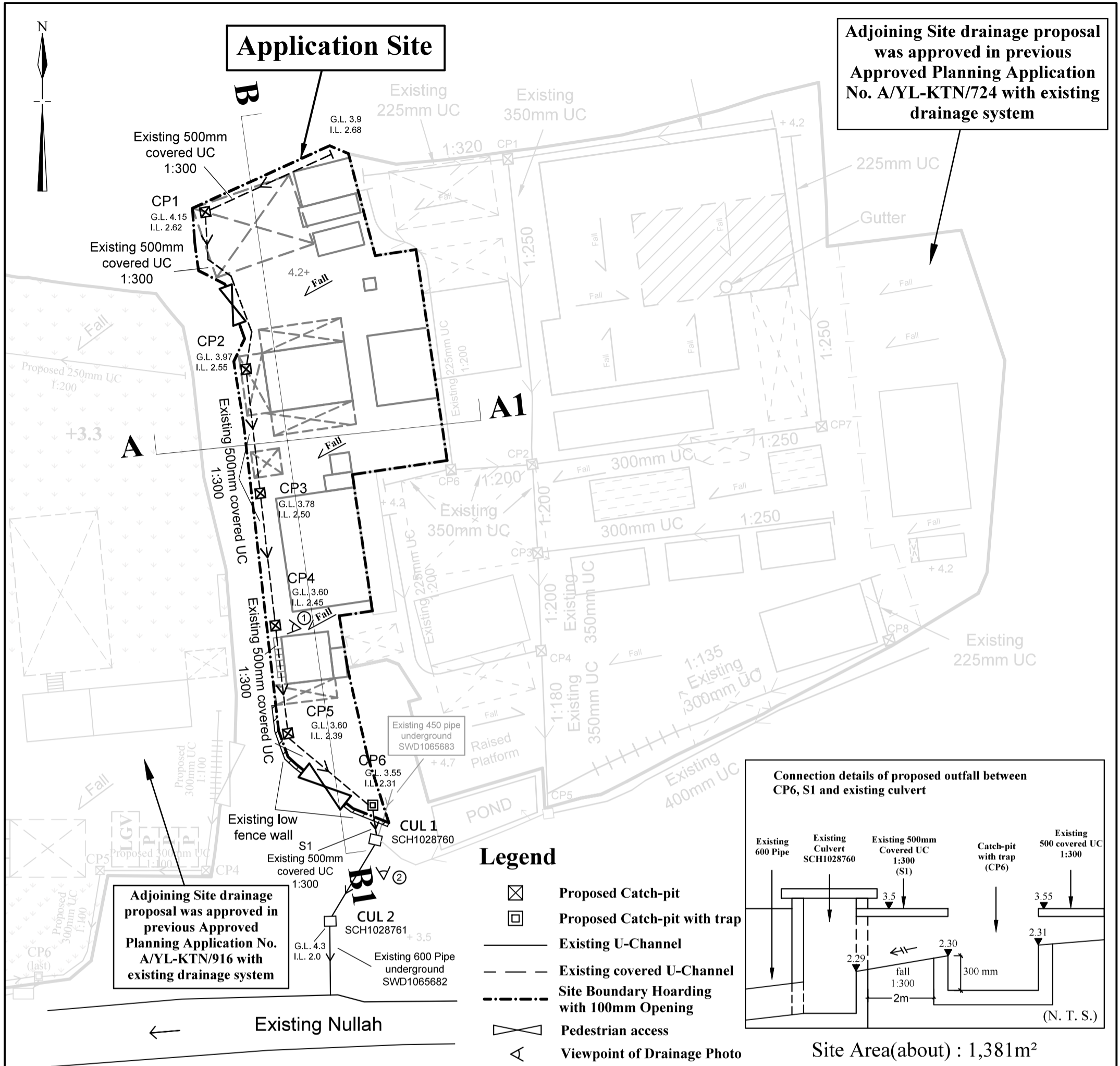
To regularize the existing filling of land (the entire site) with concrete of about 0.2m in depth (existing ground level at 4.2mPD)

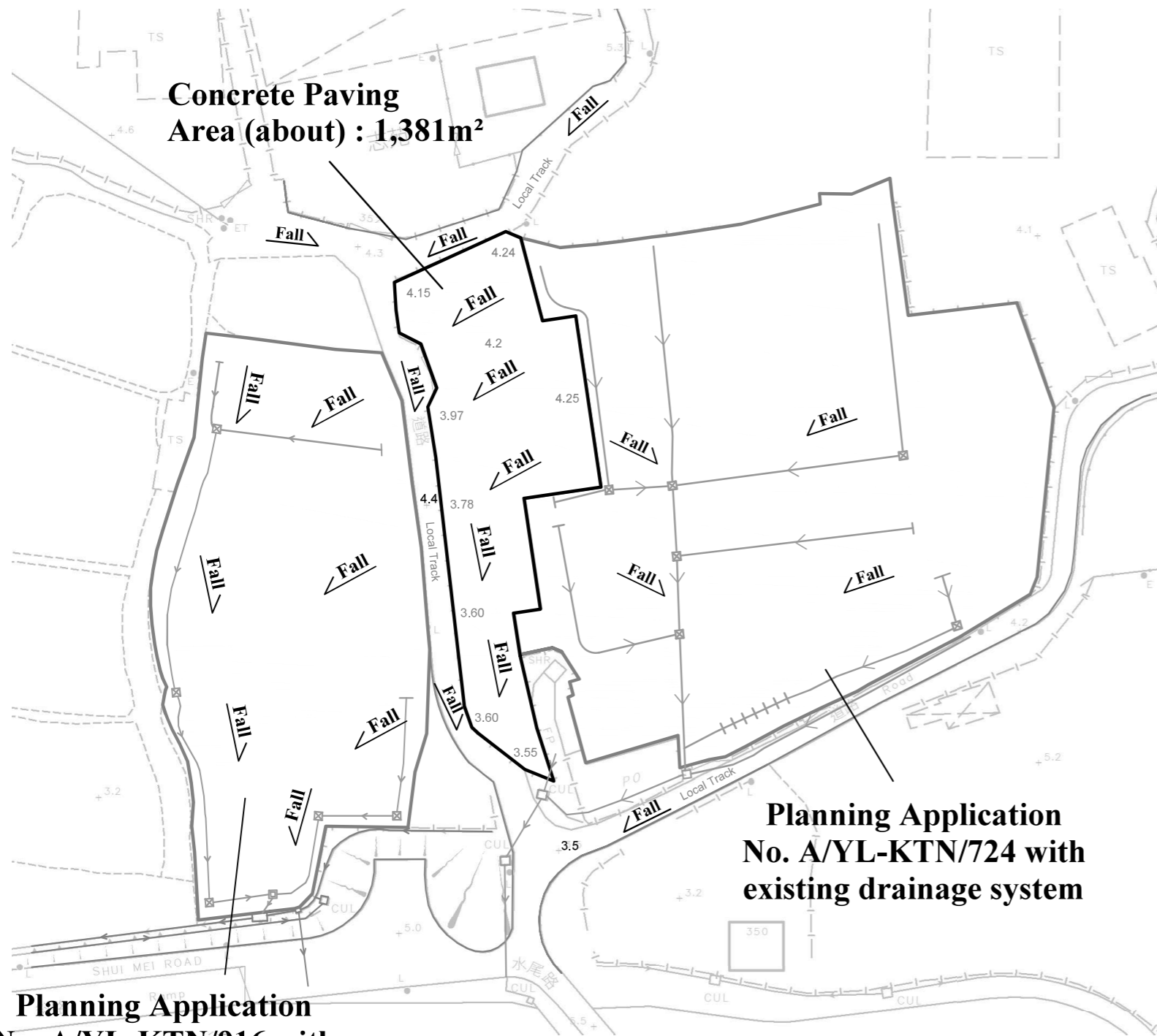
Site Area (about) : 1,381m²

1:500	Plan showing Existing Filling of Land	Goldrich Planners & Surveyors Ltd.
September 2024	Lots 1493 (part), 1500 (part) in DD. 107 and adjoining government land Kam Tin North, New Territories	Plan 3a (P 23044)

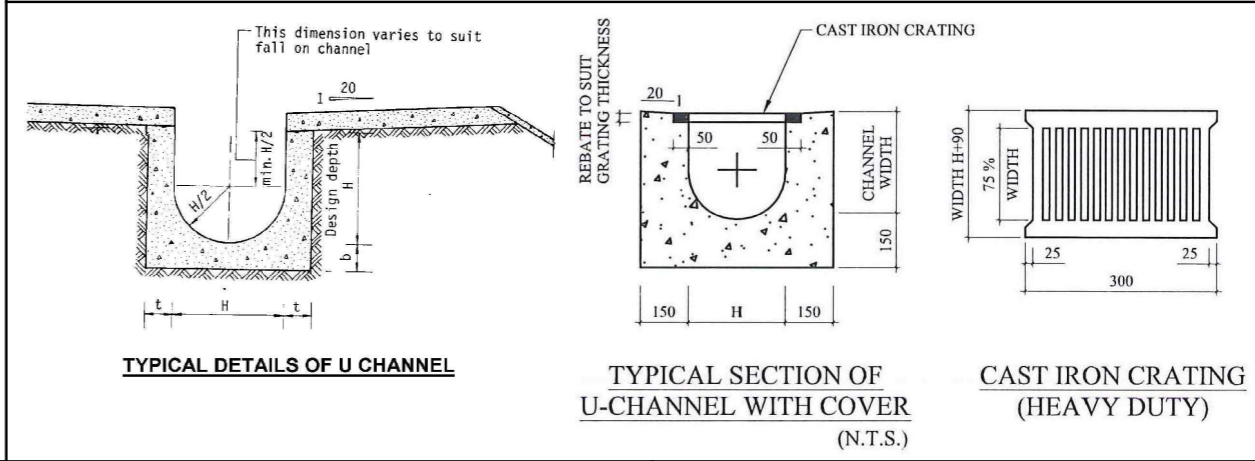
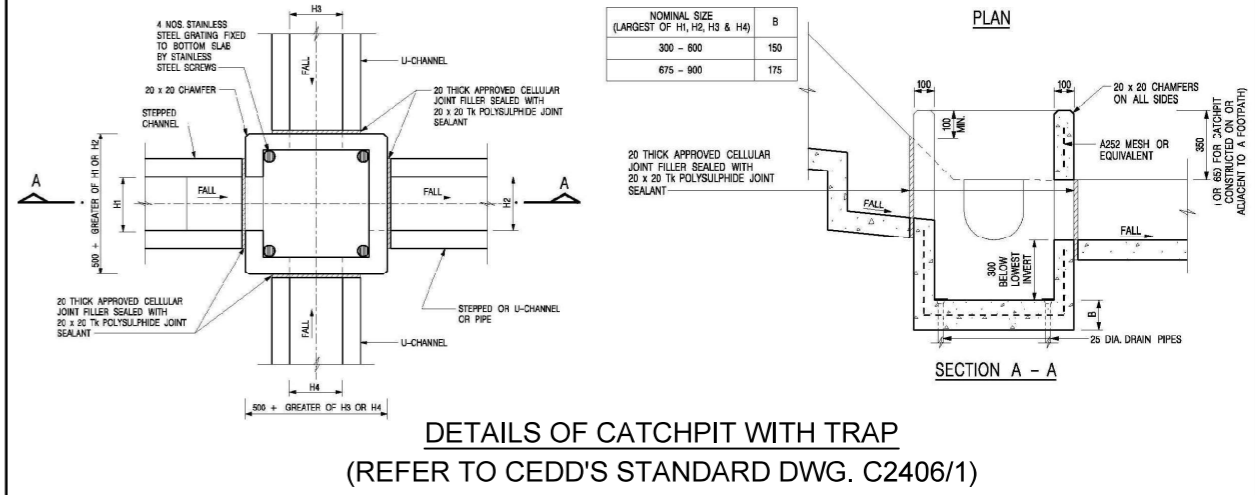
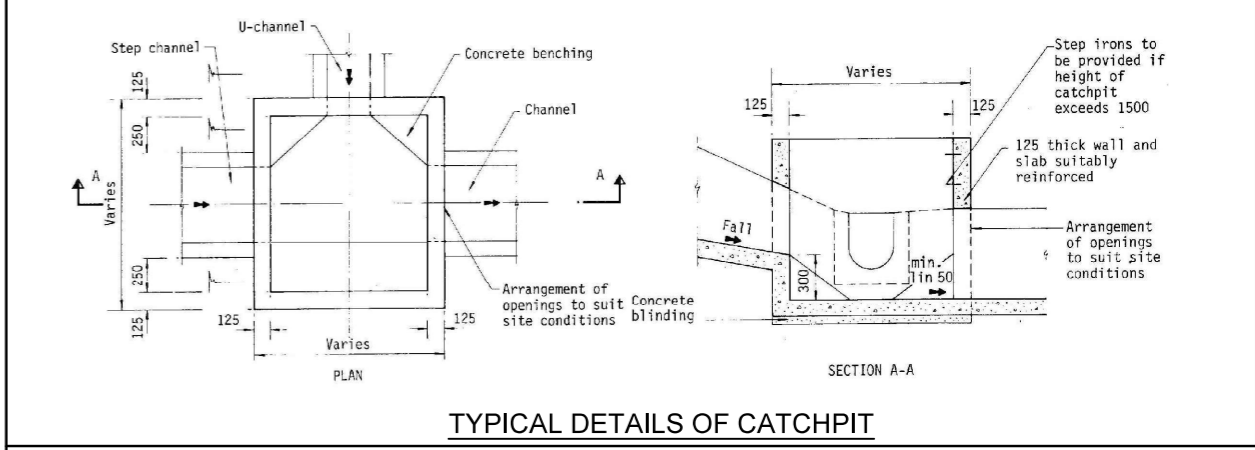
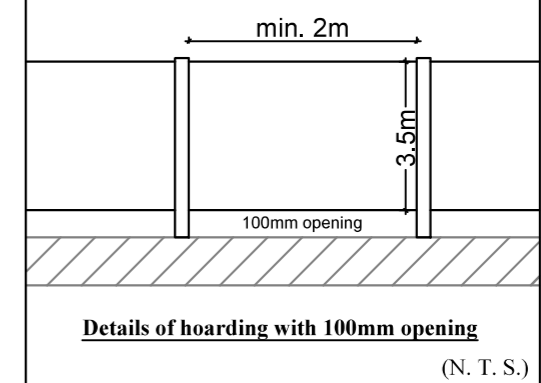


N.T.S	Plan Showing Nearest Public Transport Services	Goldrich Planners & Surveyors Ltd.
September 2024	Lots 1493 (part), 1500 (part) in DD. 107 and adjoining government land Kam Tin North, New Territories	Plan 4 (P 23044)





**AREA OF CATCHMENT
(N.T.S)**



N.T.S

September 2024

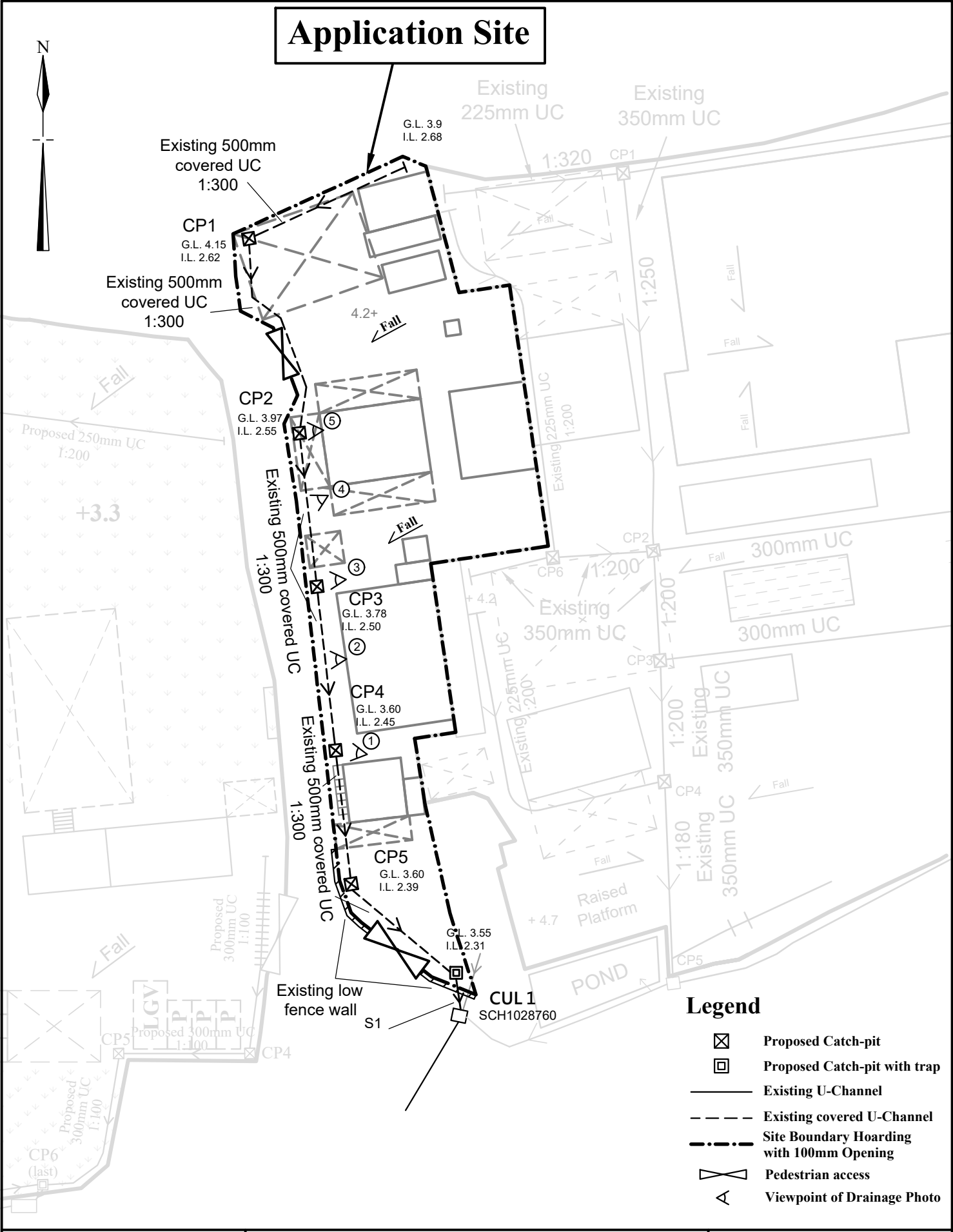
Drainage Proposal

Lots 1493 (part), 1500 (part) in DD. 107 and adjoining government land Kam Tin North, New Territories

Goldrich Planners & Surveyors Ltd.

**Plan 5.2
(P 23044)**

Application Site



1:500

October 2024

Plan Showing Viewpoints of Drainage Photographs

Lots 1493 (part), 1500 (part) in DD. 107 and adjoining government land Kam Tin North, New Territories

Goldrich Planners & Surveyors Ltd.

Plan 7 (P 23044)

Drainage Photos

Viewpoint 1



Viewpoint 2



Viewpoint 3



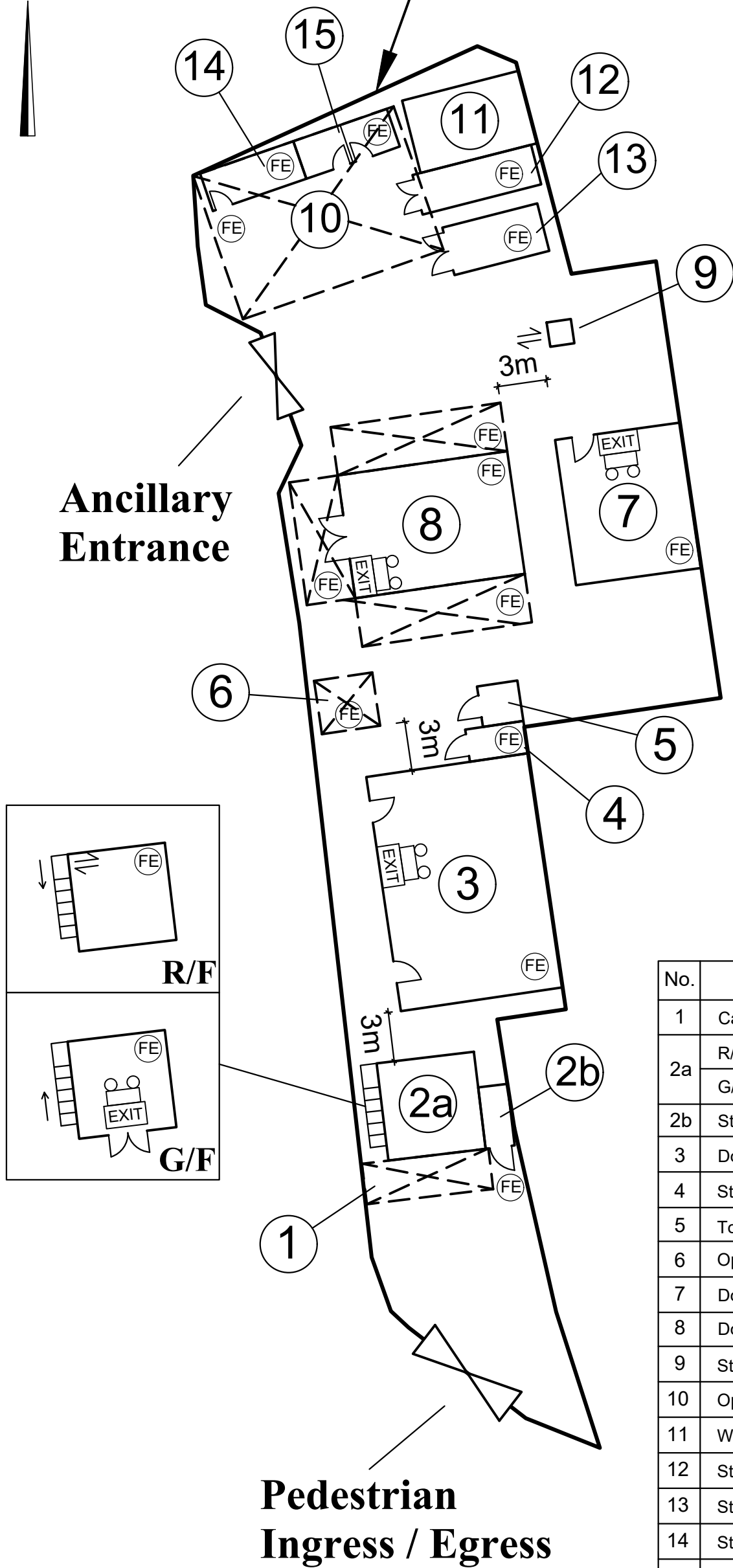
Viewpoint 4



Viewpoint 5



Application Site

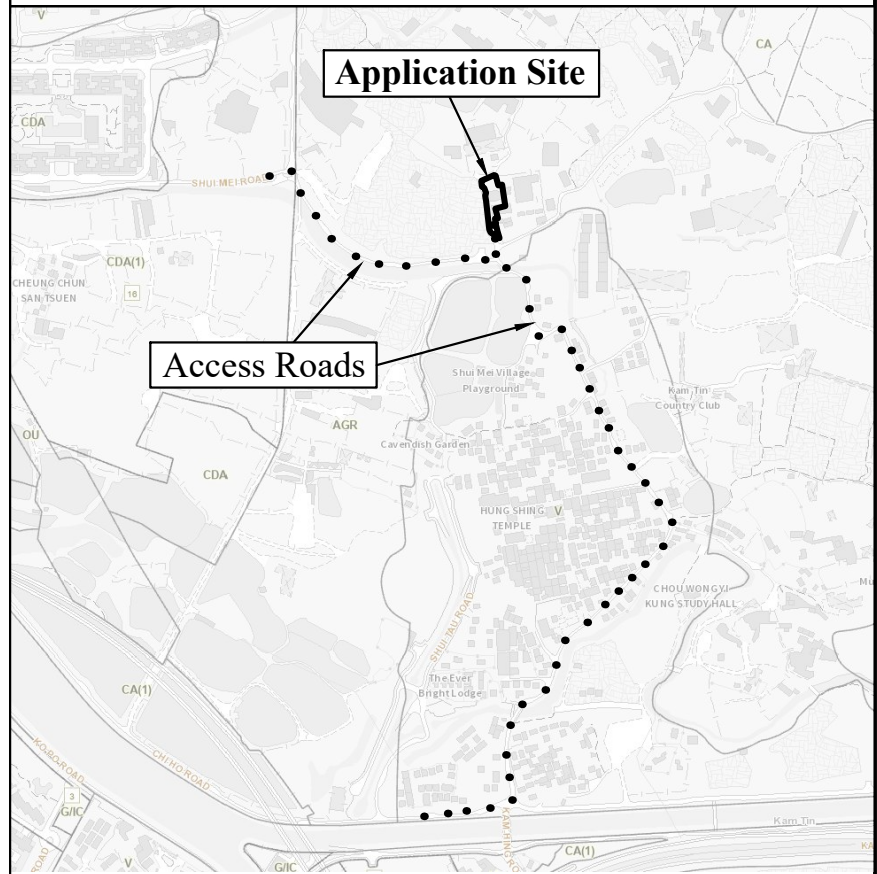


Ancillary Entrance

Pedestrian Ingress / Egress

FS NOTES:

- (i) Sufficient emergency lighting shall be provided in accordance with BS 5266-1:2016, BS EN 1838:2013 and the FSD Circular Letter No. 4/2021
- (ii) Sufficient directional and exit sign shall be provided in accordance with BS 5266: Part 1 and FSD Circular Letter 5/2008.
- (iii) Portable hand-operated approved appliances shall be provided as required by occupancy.



Location Plan

(N.T.S)

Legend

- 5.0kg CO2 Gas type Fire Extinguisher x16
- Emergency Light x4
- Exit sign x4

Site Area (about) : 1,381m²

No.	Uses	Floor Area (about)	Covered Area (about)	Storeys	Height
1	Canopy	19.5 m ²	19.5 m ²	1	3.5m
2a	R/F : Rooftop seating area	36 m ²	36 m ²	2	5m
	G/F : Ancillary Office	36 m ²			
2b	Storage	7 m ²	7 m ²	1	5m
3	Dog kennel	146 m ²	146 m ²	1	5m
4	Storeroom	7.2 m ²	7.2 m ²	1	3.5m
5	Toilets	6.3 m ²	6.3 m ²	1	3.5m
6	Open shed	12 m ²	12 m ²	1	3.5m
7	Dog kennel	70 m ²	70 m ²	1	5m
8	Dog kennel	172 m ²	172 m ²	1	5m
9	Storeroom	9 m ²	9 m ²	1	3.5m
10	Open shed	121 m ²	121 m ²	1	8m
11	Water tank	34 m ²	34 m ²	1	1m
12	Storeroom	19 m ²	19 m ²	1	3.5m
13	Storeroom	18 m ²	18 m ²	1	3.5m
14	Storeroom	under structure 10	under structure 10	1	3.5m
15	Storeroom	under structure 10	under structure 10	1	3.5m
Total Area : (About)		713 m²	677 m²		

1:300 (A3)

October 2024

Fire Service Installations Proposal

Lots 1493 (part), 1500 (part) in DD. 107
and adjoining government land
Kam Tin North, New Territories

Goldrich Planners & Surveyors Ltd.

**Plan 6
(P 23044)**