
主旨:

Fw: [PLG10304] Planning Application No. A/YL-KTN/1073- Supplementary Information

Sent: Friday, December 13, 2024 2:11 PM

To: tpbpd/PLAND <tpbpd@pland.gov.hk>

Subject: [PLG10304] Planning Application No. A/YL-KTN/1073- Supplementary Information

Dear Sir/Madam,

We refer to our submission (Ref.: ADCL/PLG-10304/L001), we would like to provide supplementary information for your onward processing. Enclosed a self-explanatory letter for your onward processing please.

Should you have any queries, please do not hesitate to contact us. Thank you.

毅勤發展顧問有限公司

Aikon Development Consultancy Limited

Estate Agent's License (Company): C-045740

Man Chi Consultants and Construction Limited
敏志顧問及建築工程有限公司

Date : 13th December, 2024
Our Ref. : ADCL/PLG-10304/L002

The Secretary,
Town Planning Board,
15/F., North Point Government Offices,
333 Java Road, North Point, Hong Kong

By Email

Dear Sir/Madam,

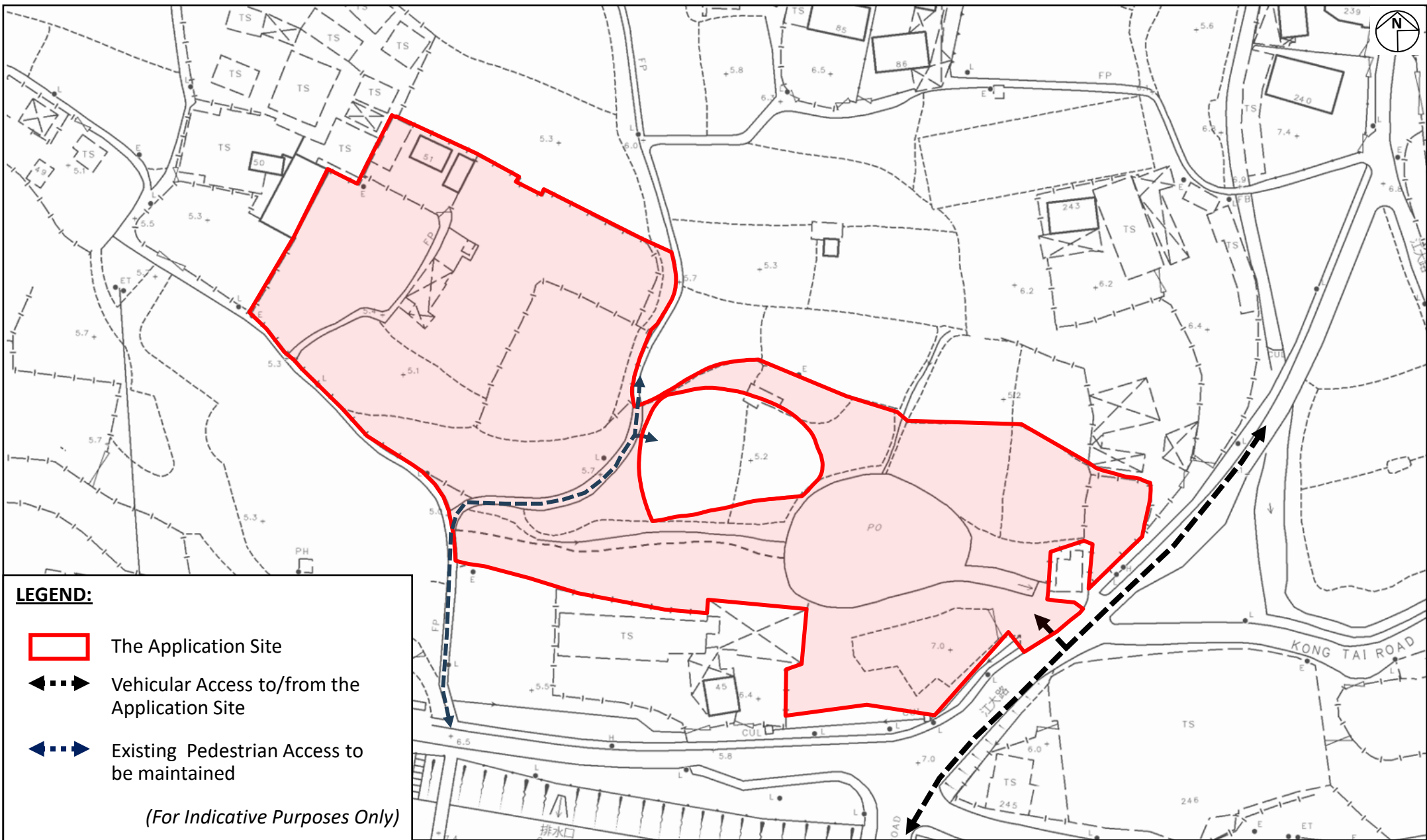
Re: Section 16 Planning Application for Proposed Temporary Place of Recreation, Sports or Culture (Hobby Farm) with Ancillary Facilities for a Period of 5 Years and Associated Filling of Land and Pond at Lot Nos. 1155 (Part), 1190 (Part), 1191 (Part), 1192, 1193, 1195, 1196, 1197 RP (Part), 1198 RP (Part), 1205 RP (Part) in D.D. 109 and adjoining Government Land, Kam Tin, Yuen Long, New Territories

We refer to our submission (Ref.: ADCL/PLG-10304/L001), we would like to provide supplementary information for your onward processing. Please find enclosed the following items:-

- i. Replacement Page of Figure 1, Figure 2 and Figure 3.

Thank you for your kind attention and should you have any queries, please do not hesitate to contact our

Yours faithfully,
For and on behalf of
Man Chi Consultants And Construction Limited



Project:
 Section 16 Planning Application for Proposed Temporary Place of Recreation, Sports or Culture (Hobby Farm) with Ancillary Facilities for a Period of 5 Years and Associated Filling of Land and Pond at Lot Nos. 1155 (Part), 1190 (Part), 1191 (Part), 1192, 1193, 1195, 1196, 1197 RP (Part), 1198 RP (Part), 1205 RP (Part) in D.D. 109 and adjoining Government Land, Kam Tin, Yuen Long, New Territories

Title:
 Location Plan

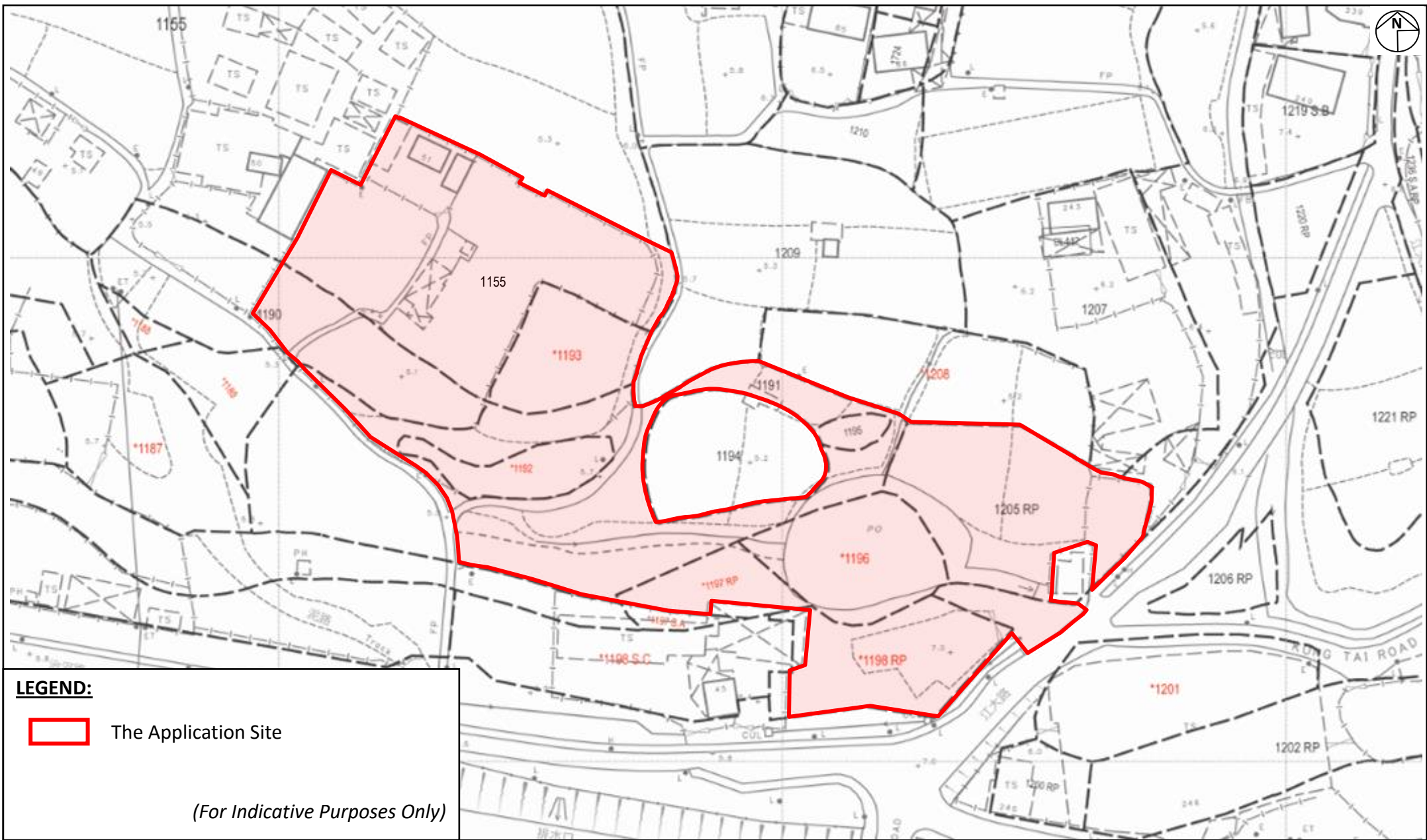
Figure:
 1

Scale:
 1:1000

Date:
 Dec 2024

Ref.: ADCL/PLG-10304/R001/F001

MC Man Chi
 Consultants And Construction Limited



LEGEND:

The Application Site

(For Indicative Purposes Only)

Project:
 Section 16 Planning Application for Proposed Temporary Place of Recreation, Sports or Culture (Hobby Farm) with Ancillary Facilities for a Period of 5 Years and Associated Filling of Land and Pond at Lot Nos. 1155 (Part), 1190 (Part), 1191 (Part), 1192, 1193, 1195, 1196, 1197 RP (Part), 1198 RP (Part), 1205 RP (Part) in D.D. 109 and adjoining Government Land, Kam Tin, Yuen Long, New Territories

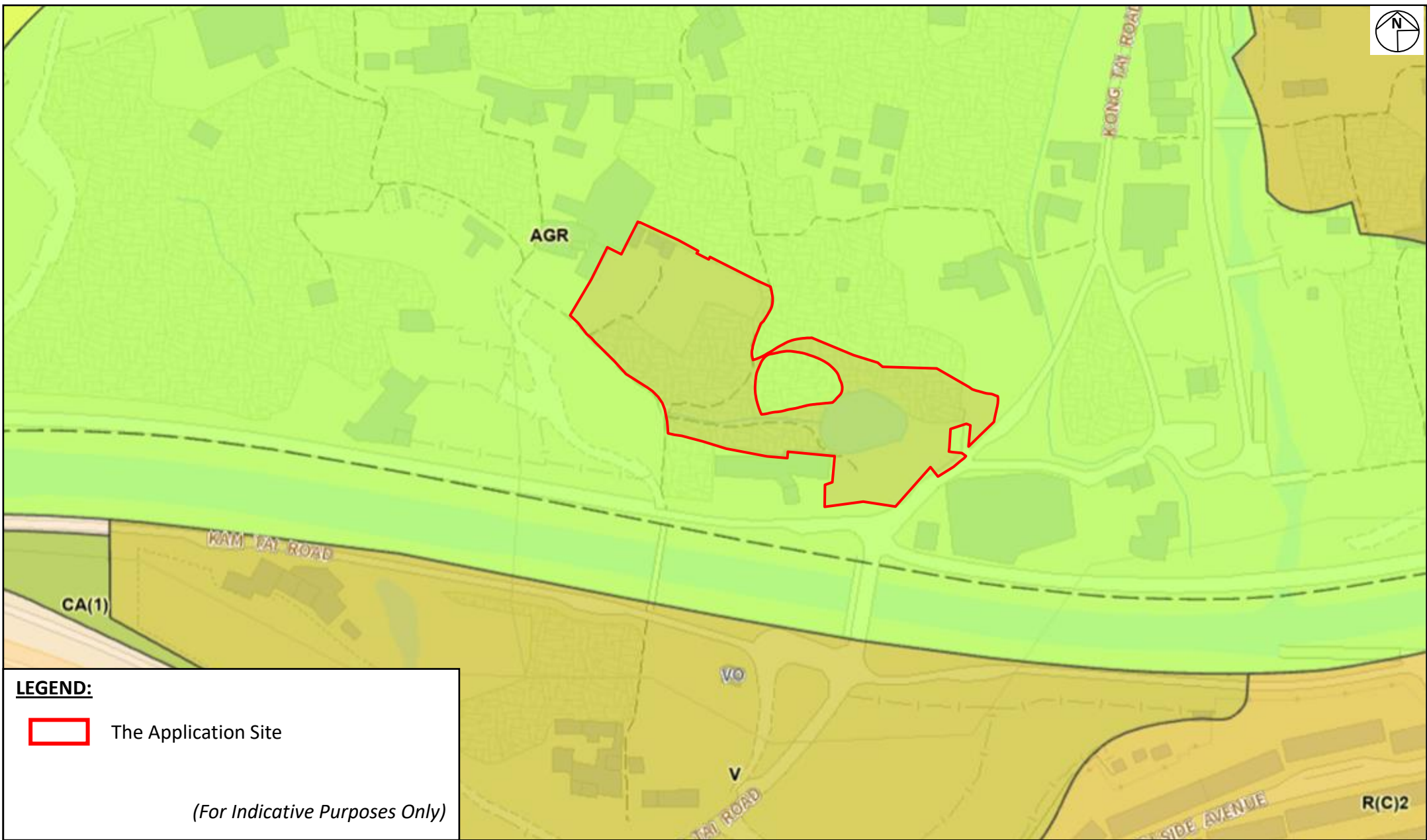
Title:
 Extract of Lot Index Plan
 (No. ags_S00000130832_0001)

Figure:
 2

Scale:
 1:1000

Date:
 Dec 2024





LEGEND:

 The Application Site

(For Indicative Purposes Only)

Project:

Section 16 Planning Application for Proposed Temporary Place of Recreation, Sports or Culture (Hobby Farm) with Ancillary Facilities for a Period of 5 Years and Associated Filling of Land and Pond at Lot Nos. 1155 (Part), 1190 (Part), 1191 (Part), 1192, 1193, 1195, 1196, 1197 RP (Part), 1198 RP (Part), 1205 RP (Part) in D.D. 109 and adjoining Government Land, Kam Tin, Yuen Long, New Territories

Title:

Extract of the Approved Kam Tin North Outline Zoning Plan No. S/YL-KTN/11

Figure:

3

Scale:

Not to Scale

Date:

Dec 2024

Ref.: ADCL/PLG-10304/R001/F003

 **Man Chi**
Consultants And Construction Limited