

擬議構築物細節 Proposed Structures Details

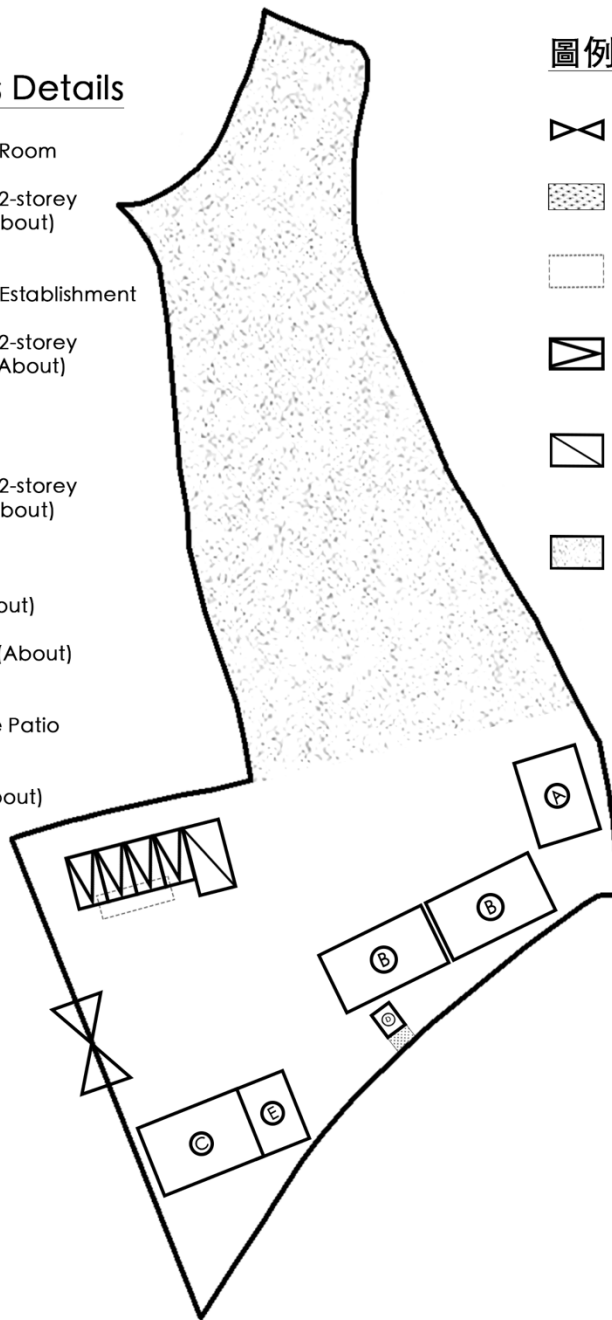
(A) 室內活動空間 Indoor Activity Room
Dimension: 8m x 4m (About)
Height: Not Exceeding 6m ; 2-storey
Non-Domestic GFA: 64m² (About)
Unit(s): 1

(B) 動物寄宿區 Animal Boarding Establishment
Dimension: 8m x 5m (About)
Height: Not Exceeding 6m ; 2-storey
Non-Domestic GFA: 160m² (About)
Unit(s): 2

(C) 辦公室 Site Office
Dimension: 7m x 5m (About)
Height: Not Exceeding 6m ; 2-storey
Non-Domestic GFA: 70m² (About)
Unit(s): 1

(D) 電箱
Dimension: 1.1m x 1.1m (About)
Height: 2.3m (About)
Non-Domestic GFA: 1.21m² (About)
Unit(s): 1

(E) 露天遮陽位置 Outdoor Shade Patio
Dimension: 2m x 4m (About)
Height: Not Exceeding 6m
Non-Domestic GFA: 8m² (About)
Unit(s): 1



圖例 Legend

-  出入口 Ingress/Egress
Width: 6m (About)
-  電線井 Cable Draw Pit
Dimension: 1.1m x 1.1m (About)
-  地下化糞池 Underground Septic Tank
Dimension: 3ft x 9ft (About)
-  私家車泊車位 Private Car Parking Space
Dimension: 5m x 2.5m
Unit(s): 4
-  輕型貨車上落車位 LGV U/UL Space
Dimension: 7m x 3.5m
Unit(s): 1
-  原生草地 Original grass area
Area: 340m² (About)
室外活動空間，供動物玩樂
Animal Outdoor Activity Area

Appendix 4 附件 4

Layout Plan
布局設計圖

Drawing No. 圖號

20250108 - 04

Project 項目名稱：

Proposed Temporary Animal Boarding Establishment and Associated
Land Filling for a Period of 3 Years

at Lot 1070 RP (Part) in D.D. 109, Kam Tin North, Yuen Long

元朗錦田北丈量約份第 109 約地段第 1070 號餘段 (部分)

擬議臨時動物寄養所 (為期 3 年) 連相關填土工程

Remarks 備註：