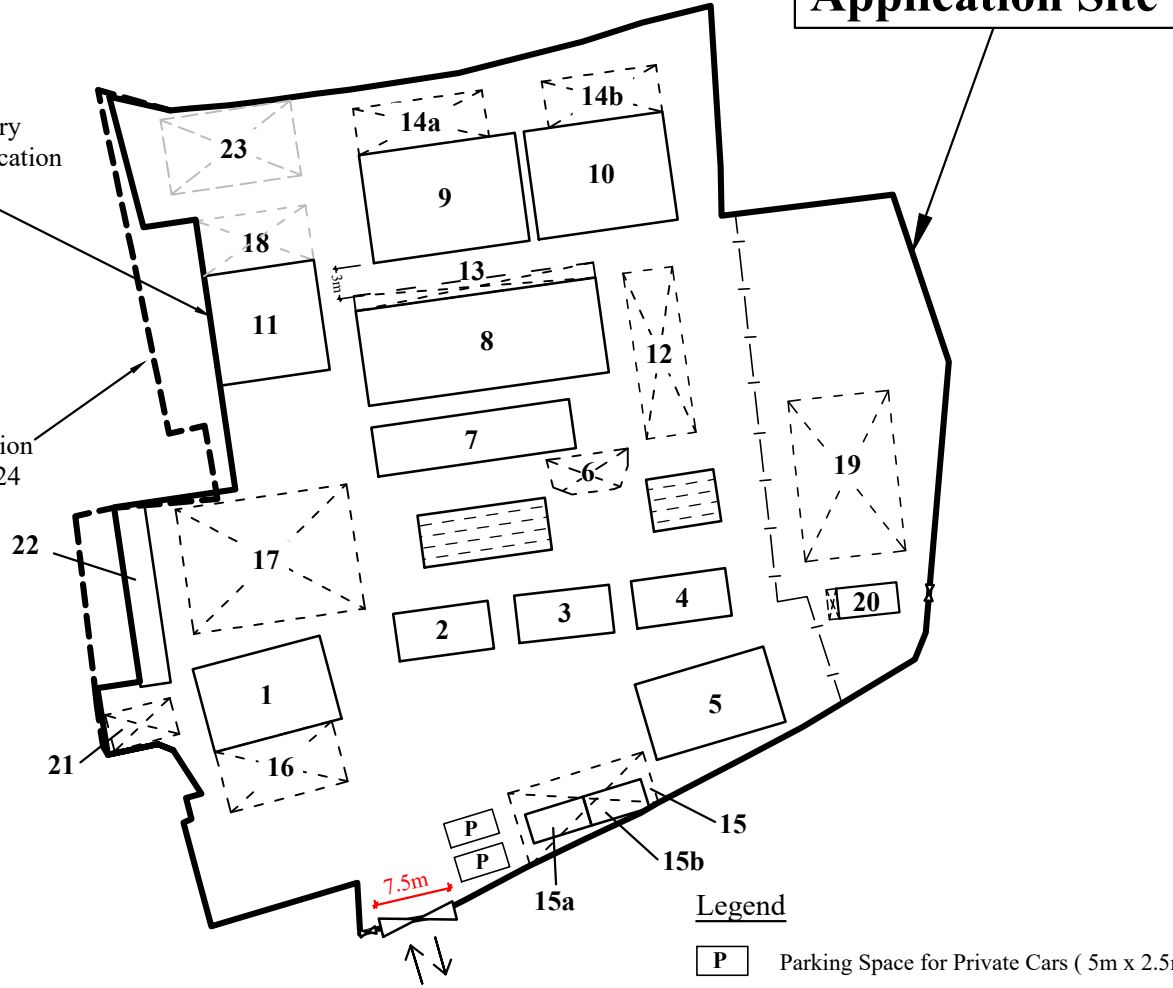


Site boundary of current application

Site boundary of pervious application No. A/YL-KTN/724



Legend

- P Parking Space for Private Cars (5m x 2.5m)
- Open Shed
- Pool

	Structures	Gross Floor Area (GFA)	Height
1.	Ancillary Office (2 Storeys)	8.5m x 13m x 2 = 221m ²	8m
2.	Dog Function Room (2 Storeys)	9.43m x 4.75m x 2 = 89.6m ²	7m
3.	Dog Function Room (2 Storeys)	9.45m x 4.75m x 2 = 89.8m ²	7m
4.	Dog Function Room (2 Storeys)	9.43m x 4.75m x 2 = 89.6m ²	7m
5.	Pantry	13.3m x 7.8m = 103.7m ²	4m
6.	Open Pump Shed	27.3m ²	3.5m
7.	Dog Function Room	19.8m x 4.9m = 97m ²	2.1m
8.	Kennel 1	24m x 9.5m = 228m ²	4.3m
9.	Kennel 2	15.6m x 10.8m = 168.5m ²	3.9m
10.	Kennel 3	13.9m x 10.8m = 150.1m ²	3.9m
11.	Kennel 4 (2 Storeys)	11m x 11m x 2 = 242m ²	7m
12.	Open Shed	16.6m x 5m = 83m ²	3.5m
13.	Open Shed	24m x 1.5m = 36m ²	3.5m
14a.	Open Shed	12.9m x 4.7m = 60.6m ²	3.5m
14b.	Open Shed	11.5m x 4.7m = 54.1m ²	3.5m
15.	Open Shed	90m ²	3.5m
15a.	Toilet (under 15)	6m x 3m = 18m ²	3.5m
15b.	Toilet (under 15)	6m x 3m = 18m ²	3.5m
16.	Open Shed	12m x 6.2m = 74.4m ²	3.5m
17.	Open Shed	12.2m x 18.1m = 220.8m ²	5.2m
18.	Open Shed	11m x 5.5m = 60.5m ²	5.2m
19.	Open Shed	10m x 16m = 160m ²	8m
20.	Multi-function room with Canopy	7m x 3m = 21m ²	3.5m
21.	Open Shed	6.3m x 3.6m = 22.7m ²	5.2m
22.	Pet Grooming Room	18m x 3m = 54m ²	3.5m
23.	Open Shed	13m x 7.5m = 97.5m ²	5.2m
Total		<u>2,541.2m²</u>	
Covered Area		2,175.2m ²	
Uncovered Area		3,264.8m ²	
		<u>5,440m²</u>	

1:750

Layout Plan

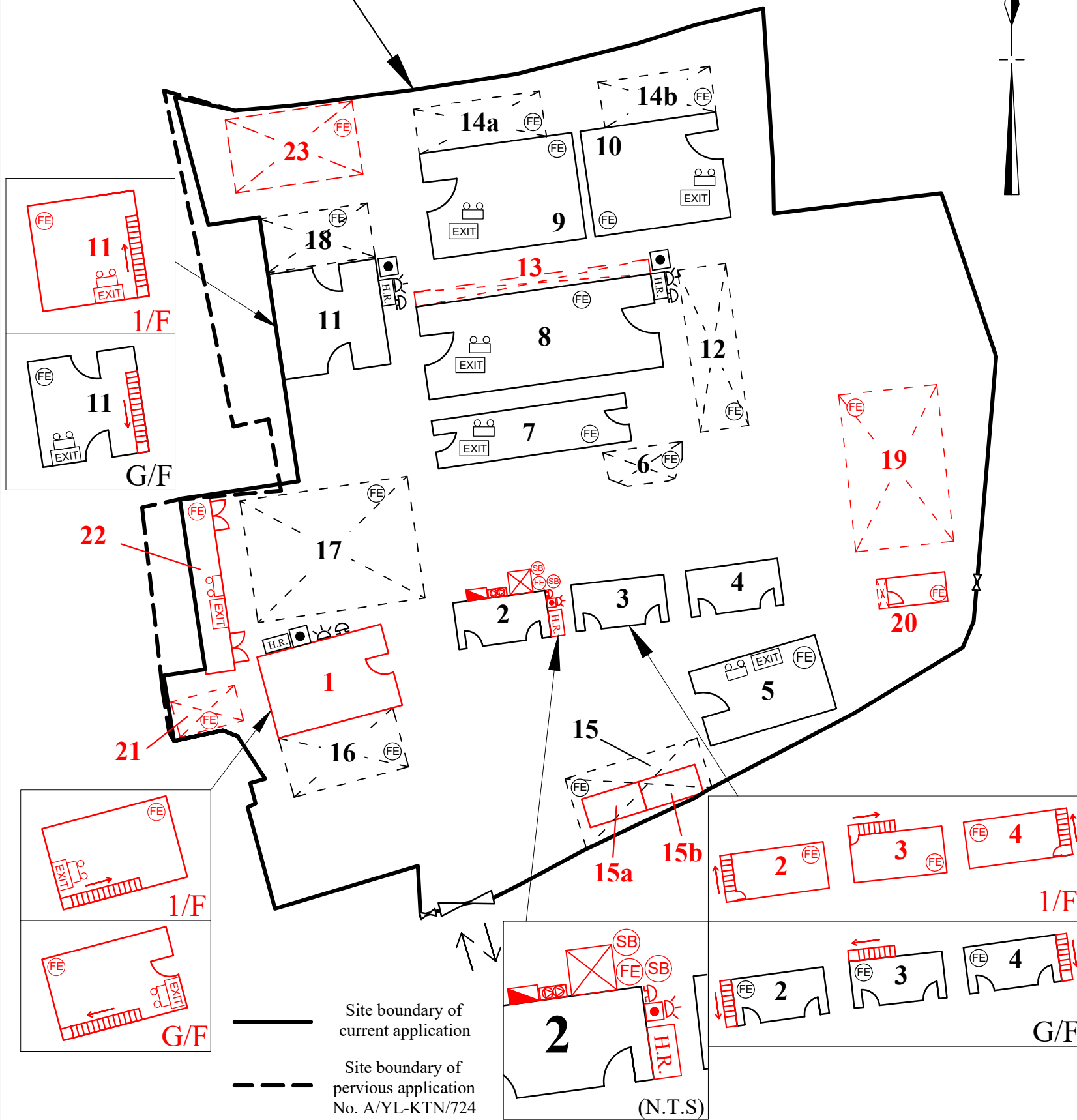
Goldrich Planners & Surveyors Ltd.

January 2024

Lot 1486(Part), 1489(Part), 1493(Part) and House Lot Block(Part)
in D. D. 107 and adjoining Government Land,
Kam Tin North, New Territories

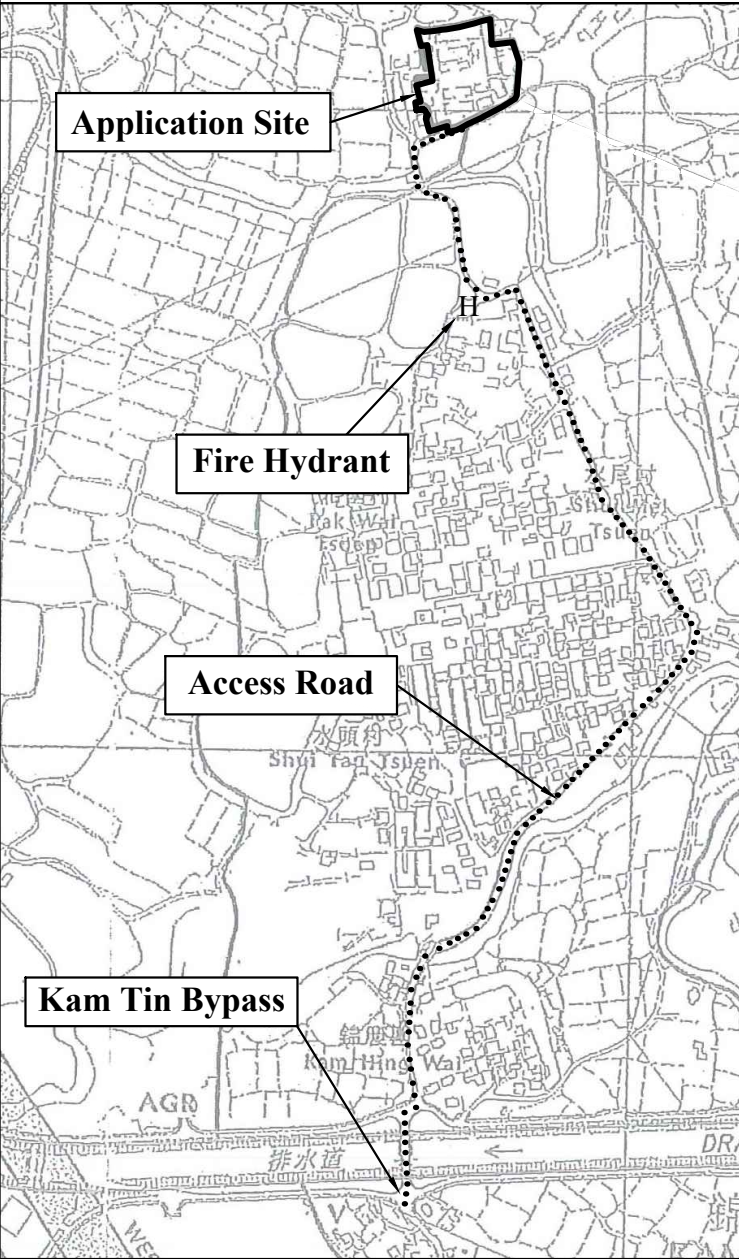
**Plan 3
(P 13035)**

Application Site



FS NOTES:

- (i) Sufficient emergency lighting shall be provided in accordance with BS 5266-1:2016, BS EN 1838:2013 and the FSD Circular Letter No. 4/2021
- (ii) Sufficient directional and exit sign shall be provided in accordance with BS 5266: Part 1 and FSD Circular Letter 5/2008.
- (iii) Portable hand-operated approved appliances shall be provided as required by occupancy.
- (iv) Fire alarm system shall be provided throughout the entire building in accordance with BS 5839-1:2017 and FSD Circular Letter 6/2021. One actuating point and one audio warning device to be located at each hose reel point. This actuation point should include facilities for fire pump start and audio/visual warning device initiation.
- (v) A modified hose reel system supplied by 2m³ FS water tank shall be provided. There shall be sufficient hose reels to ensure that every part of each building can be reached by a length of not more than 30m of hose reel tubing.
- (vi) Visual fire alarms shall be provided in accordance with BS 5839-1:2017, and FSD Circular Letter No. 2/2012 and follow the Design Manual : Barrier Free Access 2008 published by Building Department.



	Structures	Gross Floor Area (GFA)	Height
1.	Ancillary Office (2 Storeys)	8.5m x 13m x 2 = 221m²	8m
2.	Dog Function Room (2 Storeys)	9.43m x 4.75m x 2 = 89.6m²	7m
3.	Dog Function Room (2 Storeys)	9.45m x 4.75m x 2 = 89.8m²	7m
4.	Dog Function Room (2 Storeys)	9.43m x 4.75m x 2 = 89.6m²	7m
5.	Pantry	13.3m x 7.8m = 103.7m²	4m
6.	Open Pump Shed	27.3m²	3.5m
7.	Dog Function Room	19.8m x 4.9m = 97m²	2.1m
8.	Kennel 1	24m x 9.5m = 228m²	4.3m
9.	Kennel 2	15.6m x 10.8m = 168.5m²	3.9m
10.	Kennel 3	13.9m x 10.8m = 150.1m²	3.9m
11.	Kennel 4 (2 Storeys)	11m x 11m x 2 = 242m²	7m
12.	Open Shed	16.6m x 5m = 83m²	3.5m
13.	Open Shed	24m x 1.5m = 36m²	3.5m
14a.	Open Shed	12.9m x 4.7m = 60.6m²	3.5m
14b.	Open Shed	11.5m x 4.7m = 54.1m²	3.5m
15.	Open Shed	90m²	3.5m
15a.	Toilet (under 15)	6m x 3m = 18m²	3.5m
15b.	Toilet (under 15)	6m x 3m = 18m²	3.5m
16.	Open Shed	12m x 6.2m = 74.4m²	3.5m
17.	Open Shed	12.2m x 18.1m = 220.8m²	5.2m
18.	Open Shed	11m x 5.5m = 60.5m²	5.2m
19.	Open Shed	10m x 16m = 160m²	8m
20.	Multi-function room with Canopy	7m x 3m = 21m²	3.5m
21.	Open Shed	6.3m x 3.6m = 22.7m²	5.2m
22.	Pet Grooming Room	18m x 3m = 54m²	3.5m
23.	Open Shed	13m x 7.5m = 97.5m²	5.2m
	Total	2,541.2m²	

Legend

	Manual Fire Alarm Call Point	x4
	Visual Fire Alarm	x4
	Fire Alarm Bell	x4
	Sand Bucket	x2
	5.0 Kg CO2 Gas type Fire Extinguisher	x29
	Exit Sign	x10
	Emergency Light	x10
	2m³ FS Water Tank	x1
	Fire Alarm / Hosereel Pump Control Panel	x1
	Fire Hosereel	x4
	Fire Hose Reel Pump with Enclosure	x1

1 : 500 (A3)

March 2024

Fire Service Installation Proposal

(Based on the approved proposal under pervious application No. : A/YL-KTN/724)
 Lot 1486(Part), 1489(Part), 1493(Part) and House Lot Block(Part)
 in D. D. 107 and adjoining Government Land, Kam Tin North, New Territories

Goldrich Planners & Surveyors Ltd.

**Plan 8
(P 13035)**